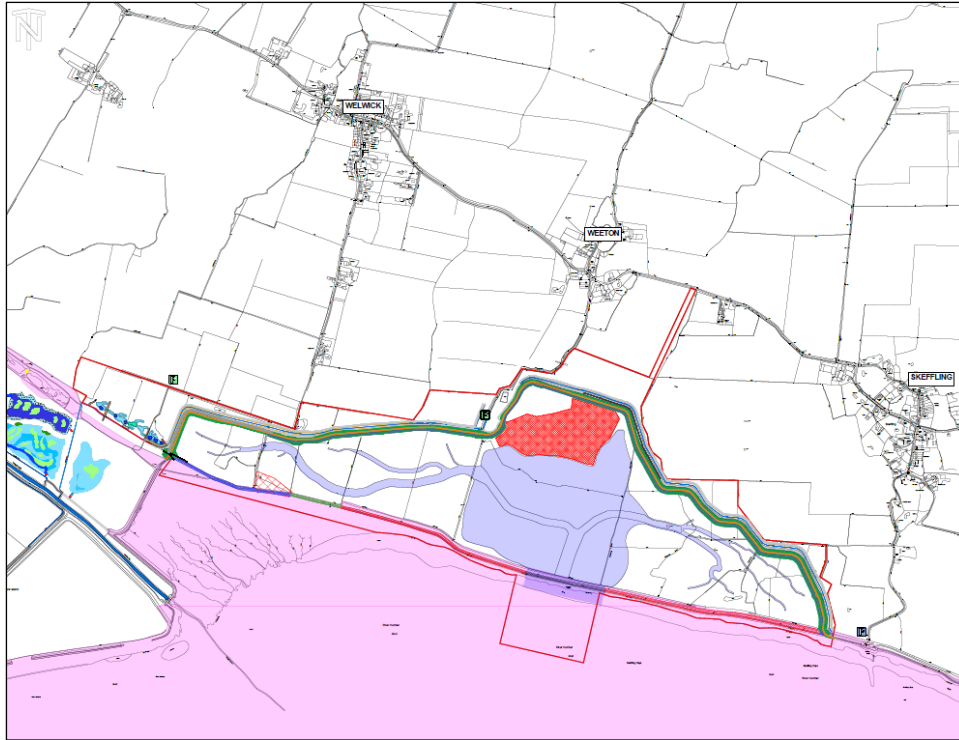


OUTSTRAYS TO SKEFFLING MANAGED REALIGNMENT SCHEME (OtSMRS) NEWSLETTER

Winter 2022/23



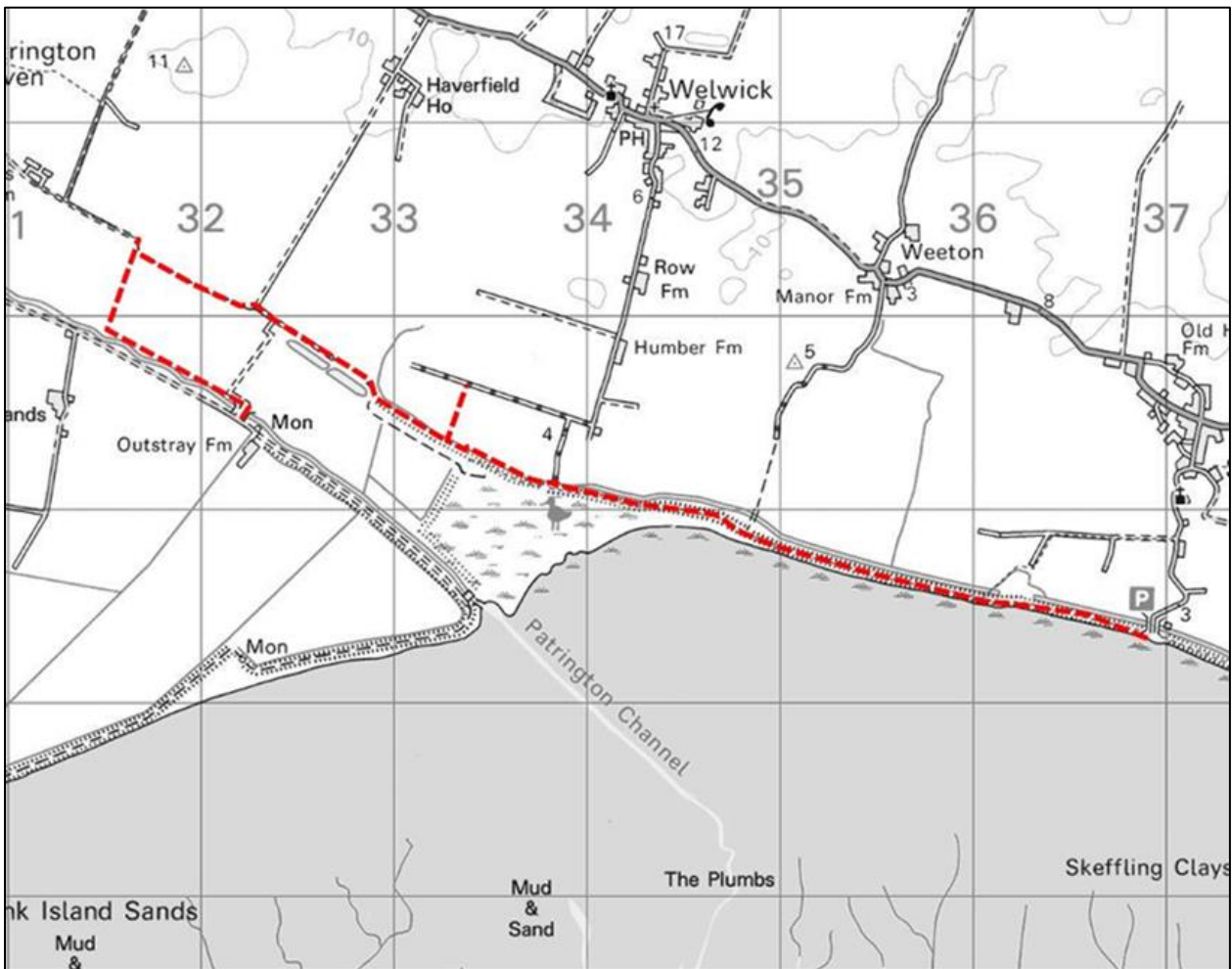
Map showing the new managed realignment embankment (in green) and creek system

A second year of construction completed

Thanks to a dry summer, good progress has been made building the new embankment on the eastern side of the scheme, with more than half of it – a distance of 2,700 metres - fully constructed and the remaining length partly built. Most of this work was carried out between Welwick Bushes and the main site compound between Weeton and Skeffling. When finished, the new embankment will extend from Winestead Drain in the west to link with the existing embankment at Skeffling pumping station, as shown on the map above, providing enhanced protection against tidal flooding for residents in the area.

Work continued over the summer on the wet grassland habitat in fields on the western side of the scheme. This area consists of a series of lagoons, ponds and scrapes to provide a range of freshwater habitats for overwintering birds. Our contractors also started building the new flood embankment at the eastern end of these fields.

With the arrival of much wetter conditions in the autumn, construction stopped at the end of October and our contractors moved off site in mid-November. The western site compound near Outstray Farm was removed and the main compound for the eastern side, between Weeton and Skeffling, has been secured and the access track blocked off. The cabins will remain in place over the winter and work on the scheme will restart in the spring next year. However, JBA Bentley staff will carry out regular checks in the area and monitor it over the winter months. If you see anything suspicious on either site over the next few months, please contact JBA Bentley's site manager, Paul Craig on **07837 454048** or contracts manager Robert Cullledge on **07970 594158**.



Map showing access routes (marked in red) across the site over winter

Access

Both parts of the scheme – East and West Two – are still classed as construction sites and so, for public safety reasons, we cannot allow access to these areas whilst work is stopped. If you are walking in the vicinity of these sites, please respect any instructions placed on the site boundaries and avoid entering fenced off areas.

The map above shows the main public access routes that can be used over the winter; we have opened up a new access route around the boundary of the West Two site, having laid a surfaced track from the bridge near Outstray Farm. The public footpath along the existing floodbank between Welwick and Skeffling can still be reached via Sheep Trod Lane and remains open.

October events

At the beginning of October we organised a day of events to give the local community an opportunity to find out what's been happening on the site during this construction season. Following the same pattern as last year, parish councillors from Welwick and Skeffling joined us in the morning for a site visit. This gave them a chance to see first-hand some of the work done on the scheme, ask questions and also to appreciate the sheer scale of operations.

In the afternoon we moved to Welwick Village Hall, where we set up displays for a public drop-in. Staff from the Environment Agency and JBA Bentley presented information and answered questions on a wide range of topics, including findings from the archaeological investigations done in 2021, plans for the pumping stations at Skeffling and Winestead Drain, and the Humber 2100+ Strategy. We used

drone footage from a flyover in September to give visitors an aerial view of what's been happening on the site. Over 40 people came to the drop-in and spent time talking with staff about the scheme. Thank you to everyone who called in; it was an interesting event, with lots of questions asked and answered.



Photo: The drop-in in progress in Welwick village hall in October.

Timescales for construction in 2023 and 2024

The site will remain closed over the winter until March 2023, when our contractors will remobilise and prepare for the next season of construction. This will include finishing off work on the remaining sections of embankment, creating access points and installing the networks of creeks within the future realignment site.

Due to the protected status of the estuary and consequent environmental restrictions, any work to be done directly on the estuary and its frontage can only take place between April and June. Therefore, the breach and removal of the old embankments will take place in Spring / Summer 2024.

Contact Us

Environment Agency

For enquiries, you can contact us by email: Welwick.Skeffling@environment-agency.gov.uk
Or by phone on **03708 506506** and ask for Andrew Gee, Project Manager, or Nikky Wilson, Engagement Specialist.

For more information about the scheme, you can visit the scheme's webpage at <https://consult.environment-agency.gov.uk/yorkshire/outstrays-to-skeffling-managed-realignment-scheme/>