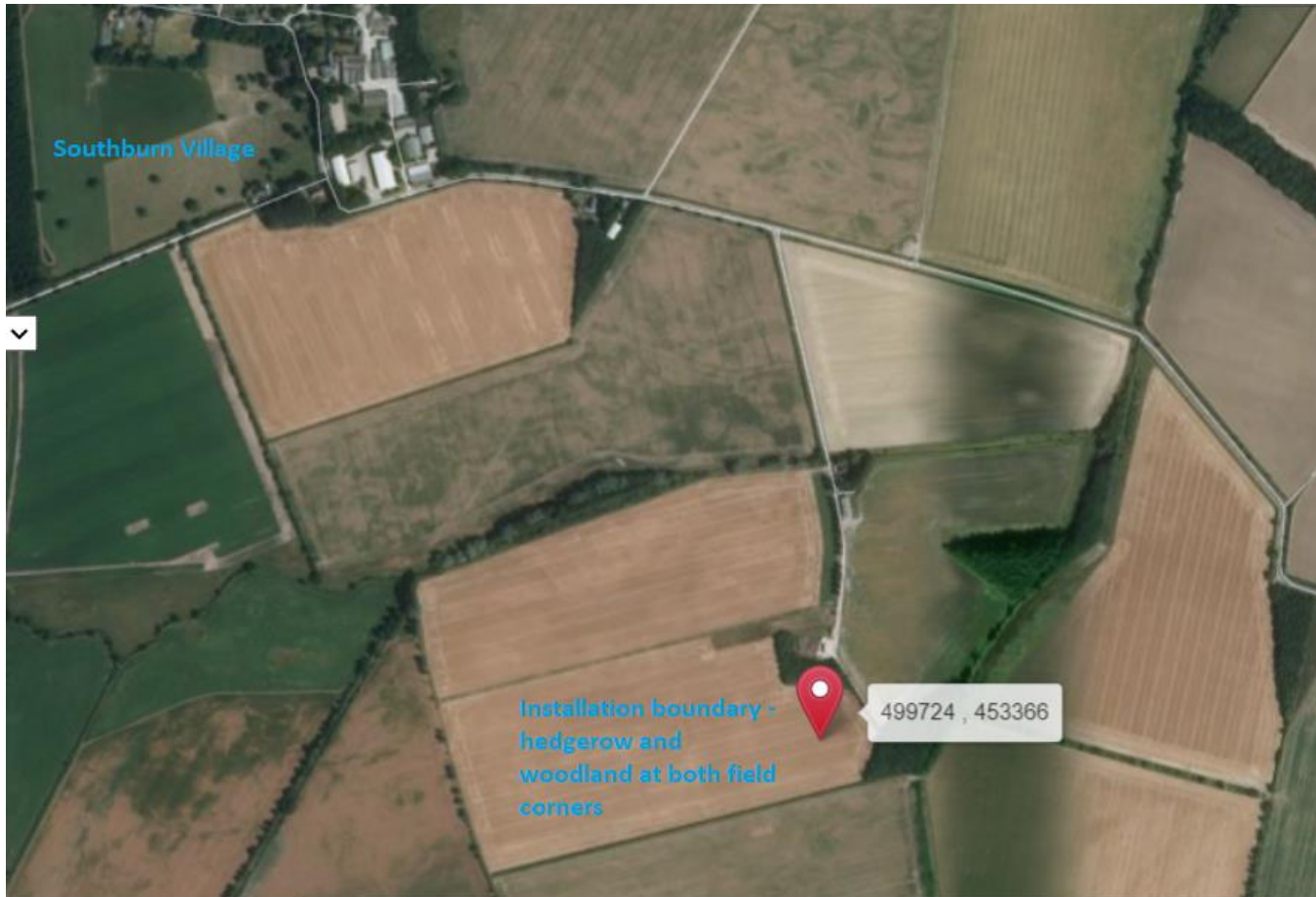
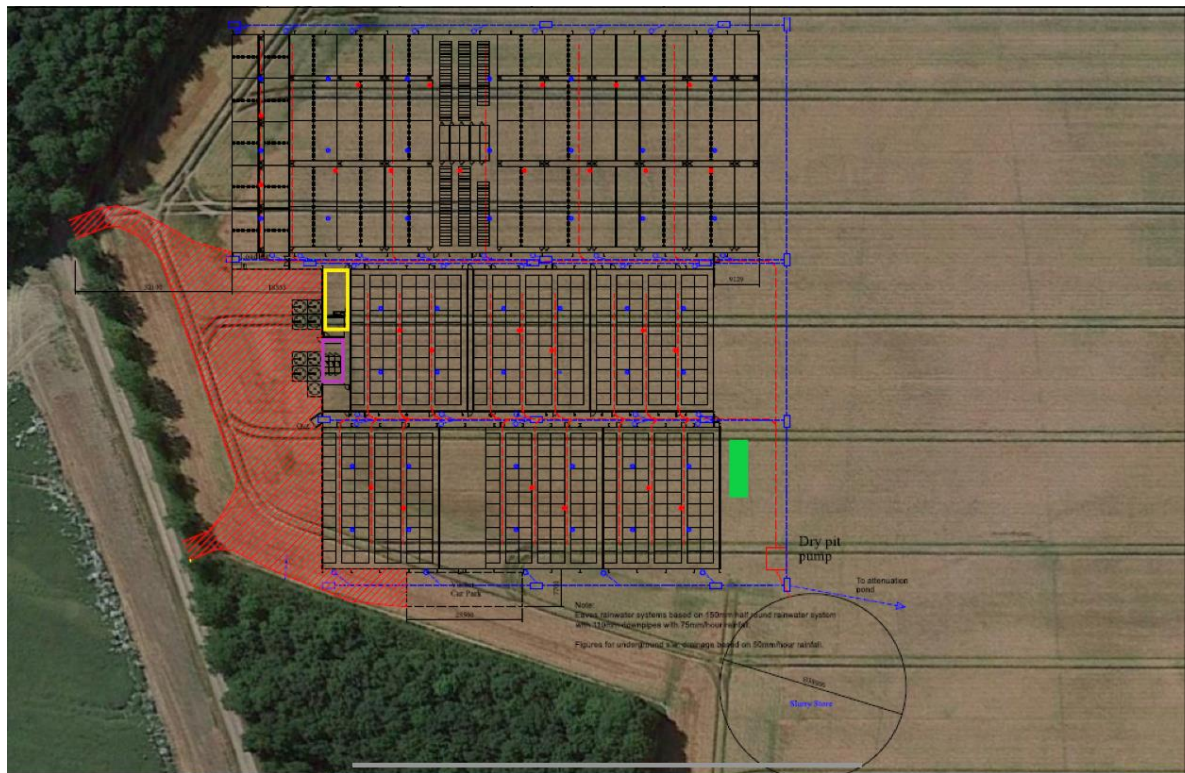


Site Plans and Supporting Information



Site location (grid referenced), of the planned new unit relation to the surrounding area and Southburn village.

Figure 1 Site location for the installation in relation to the surrounding area.



Site Layout Additional



Incinerator & Fuel Tank area location

Shower and Changing Area

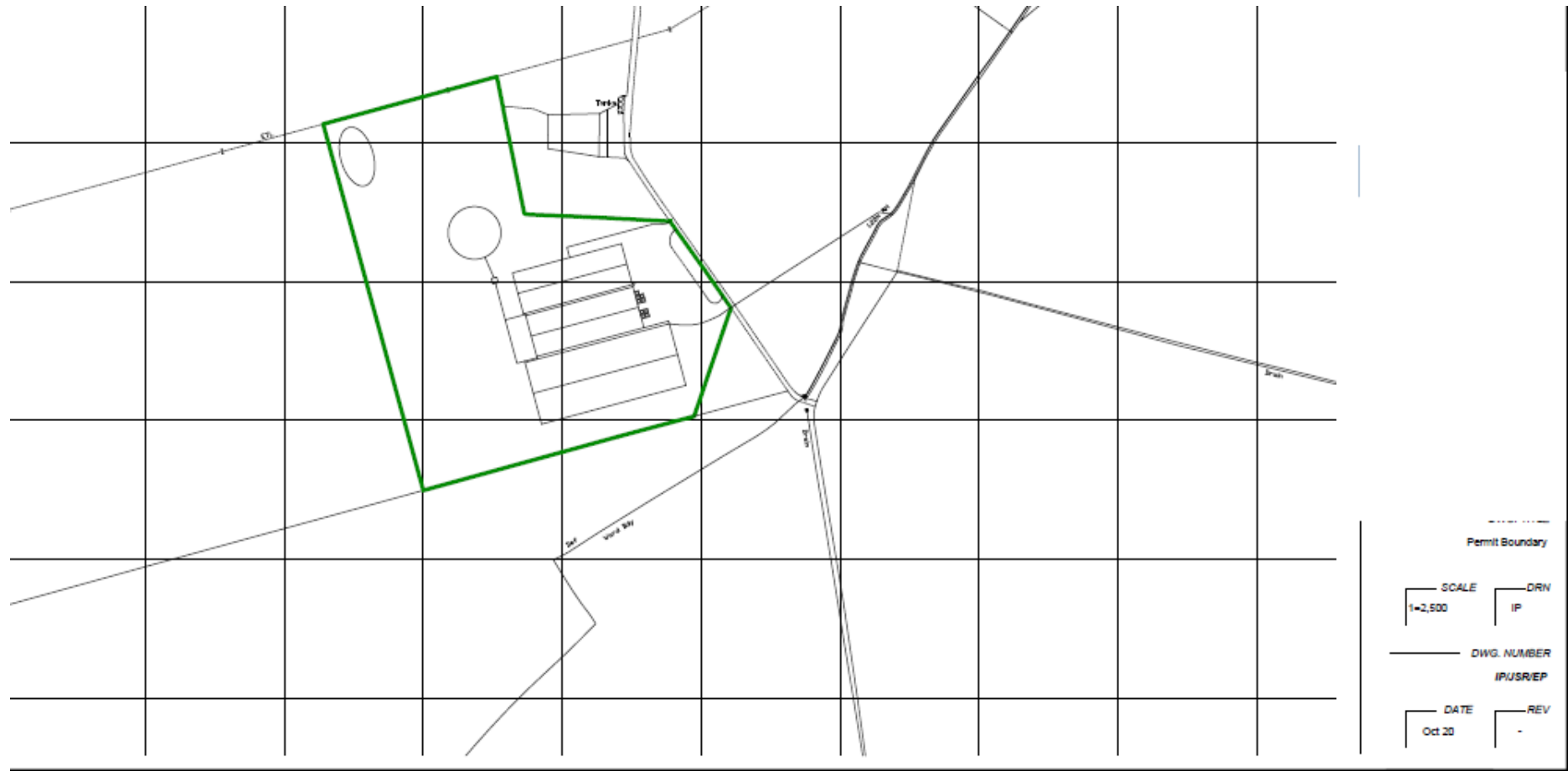
Storage Area -Area for water tanks, feed mixer and emergency generator, additional storage (chemicals etc)

Features (not to scale)

Key:

Figure 2 Site Layout Plan with Additional Features Added in not included within plans yet, to include as features, location will be confirmed when installation starts to be built (not to scale)

Figure 3 shows the installation boundary for the unit.



of

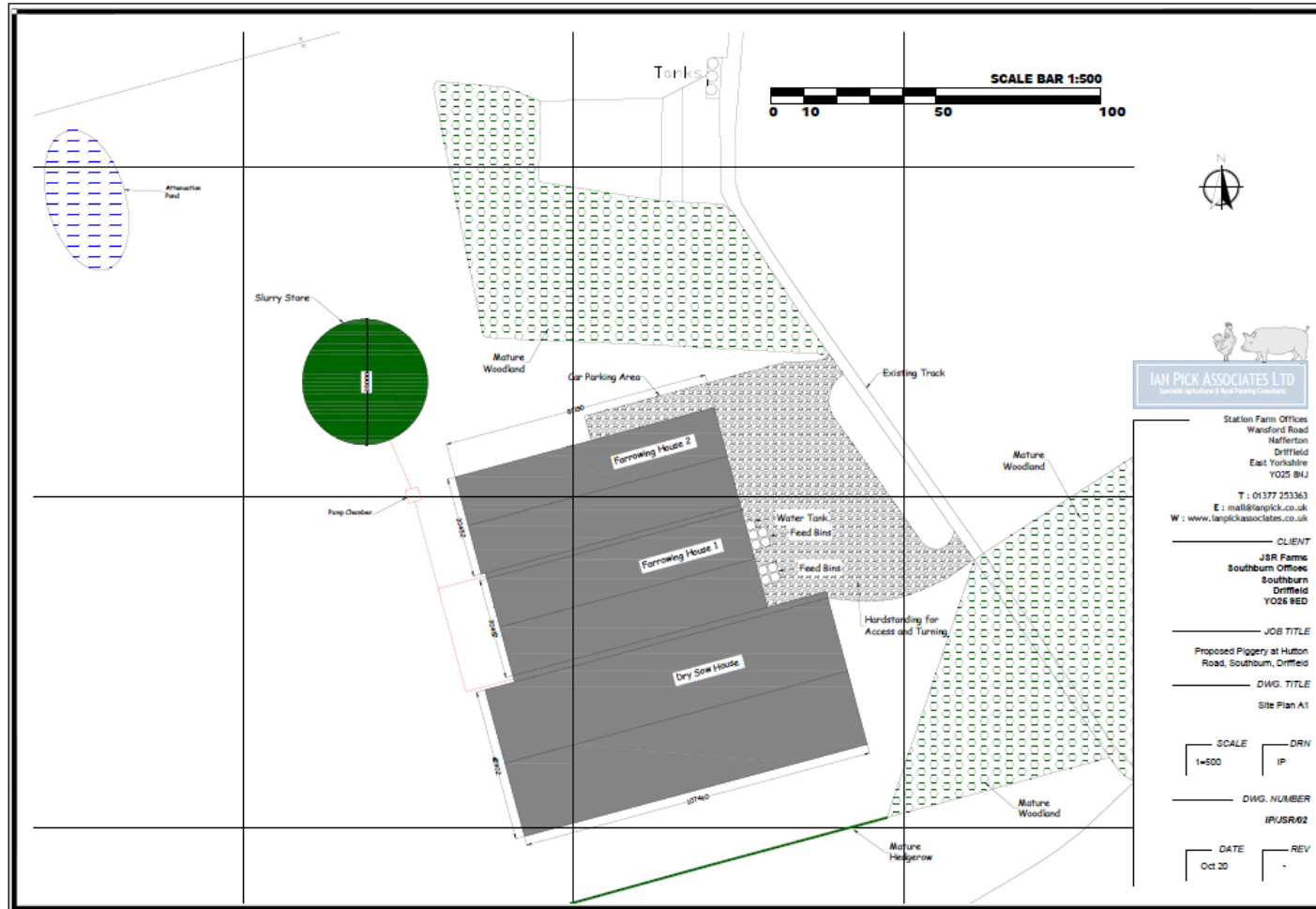


Figure 4 shows an overview of the site plan including the buildings, slurry and attenuation pond with the surrounding woodlands and land to scale.

Figure 5 shows the slurry and contaminated water drainage from channels into the slurry store on site. And also shows the drainage plan for all the clean water collected on the site to run off into the attenuation pond (in figures above).

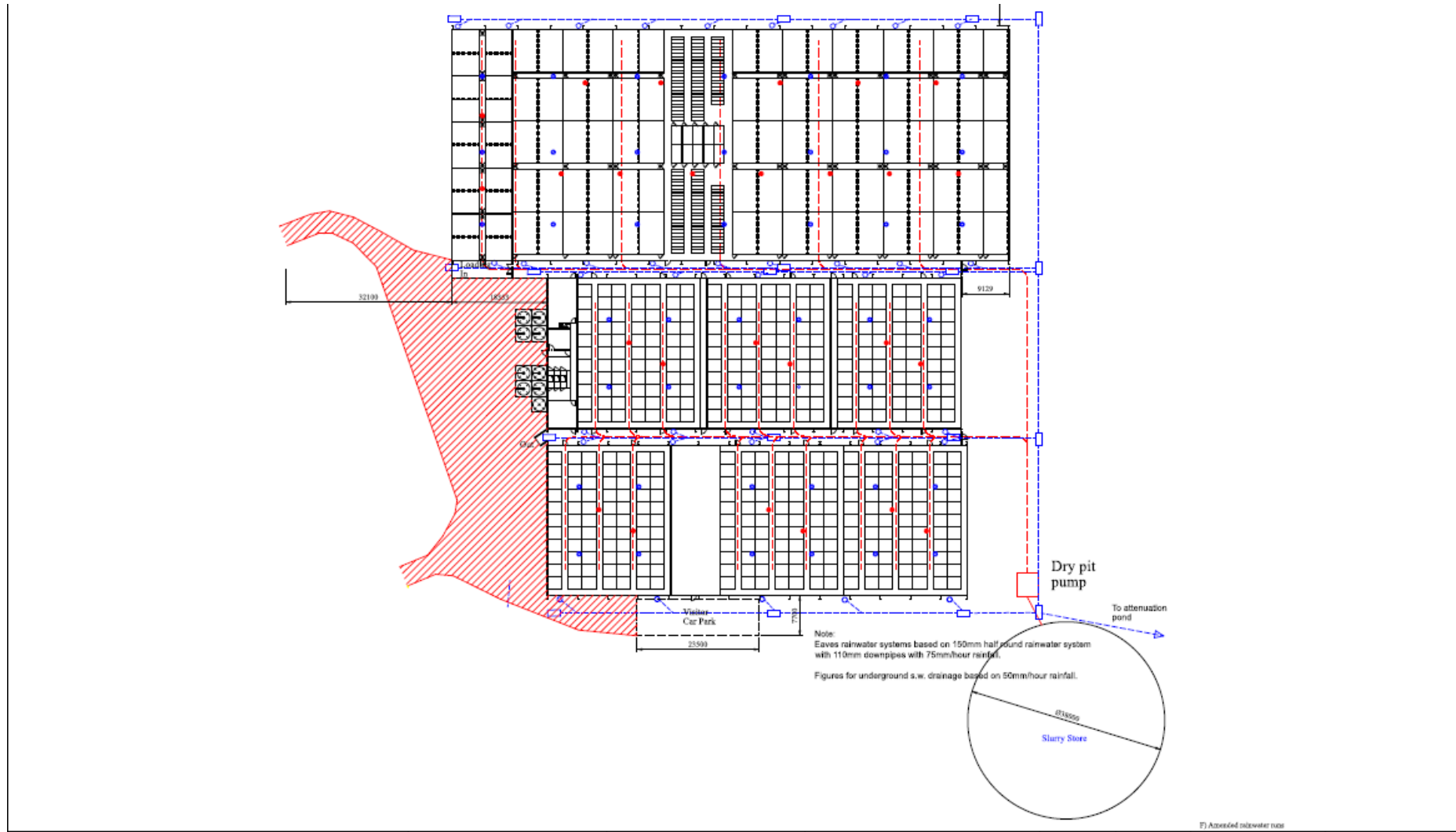


Figure 6&7 shows the sensitive receptor within 400m of the new unit located 250.1m from the JSR owned house (right hand figure) and the new unit is 900.7km from Southburn village (left hand figure).

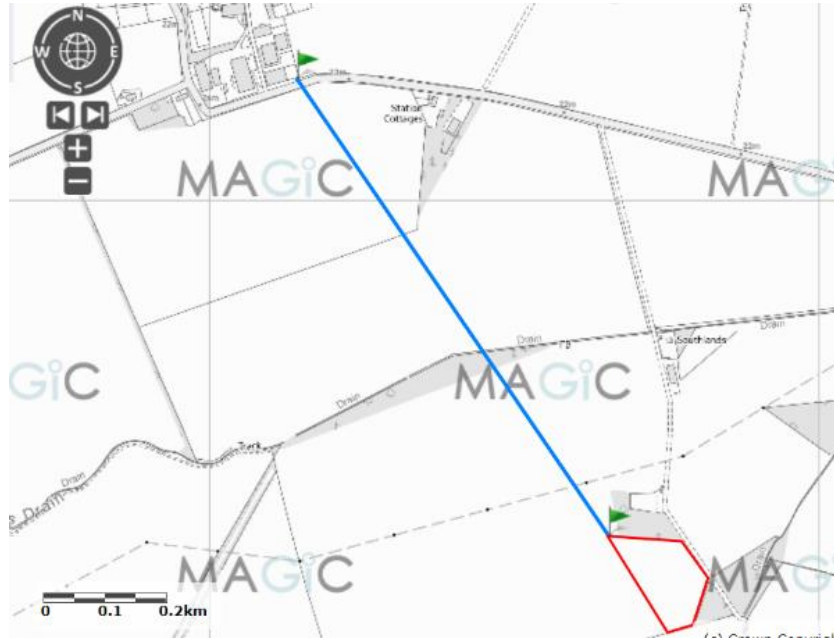


Figure 8 shows the buffer zone of 5km around the new site, showing only the River Hull Headwaters as an SSSI within this distance.

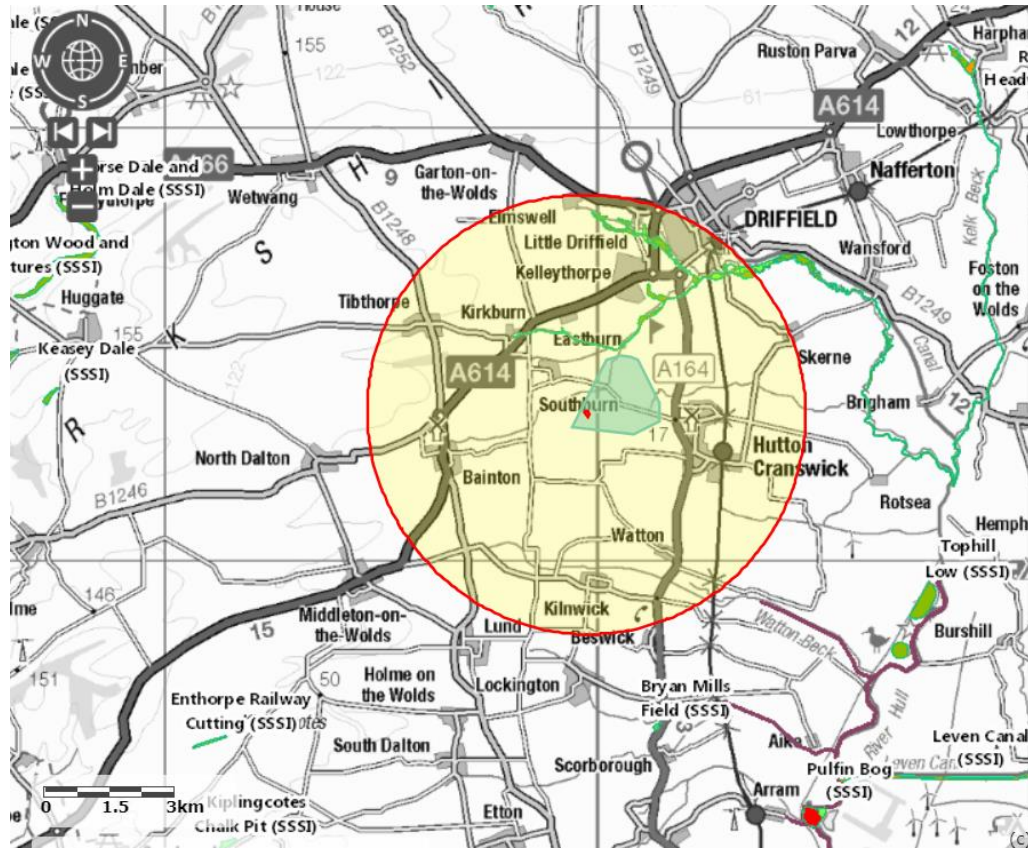


Figure 9 shows the bedrock and superficial geology of the land area for the new unit and the surrounding land.

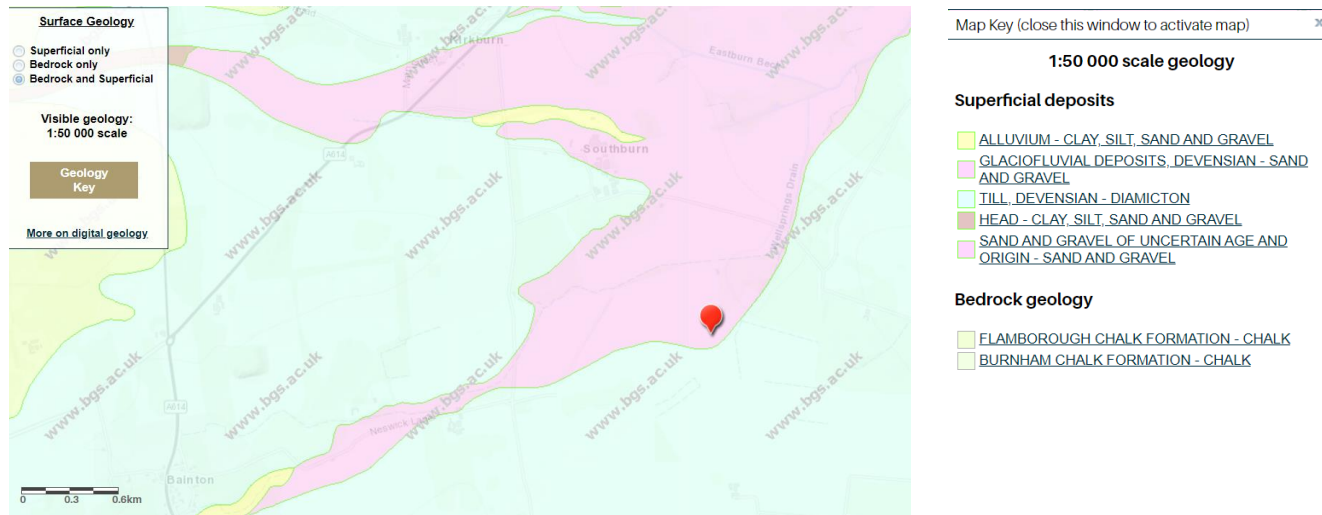


Figure 10, boar hole location in relation to the new site, 700m North of the unit.

