

June 2023 (V01)

1. Discharge concept model for hydrogeomorphology assessment

July 2023 (V02)

1. Full draft concept drawing set for client approval

July 2023 (V03)

1. Added: new perimeter security fence, handrail to existing footway & EA sluice (all indicative only); plan of key elements of scheme; 3D view of ditch discharge / otter ramp.

July 2023 (V04)

1. Added: flood level information sheets

Sept 2023 (V05)

1. Minor amendments and corrections after client review

Drawings in Set:

1. Change & Note Page (THIS PAGE)
2. Location as-is
3. Location as-proposed
4. Working area
5. Plan view - comments
6. Plan view - dimensions
7. Plan view - elements of scheme
8. Discharge dimensions
9. ABC Points
10. Section - fine screen intake
11. Section - bywash
12. Section - powerhouse / turbine
13. Section - eel pass
14. Section - fish pass
15. Cross section - intake
16. Cross section - discharge
- 17: 3D view - North
- 18: 3D view - East
- 19: 3D view - South
- 20: 3D view - West
21. Ditch discharge and otter ramp
22. Powerhouse interior, indicative
23. Flood level information (plan)
24. Flood level information (elevation)

Notes

Dimensions in mm.

Elevations in mAOD

unless otherwise stated.

All plan views are North oriented

unless otherwise stated.

Grid shown is OS 25m grid.

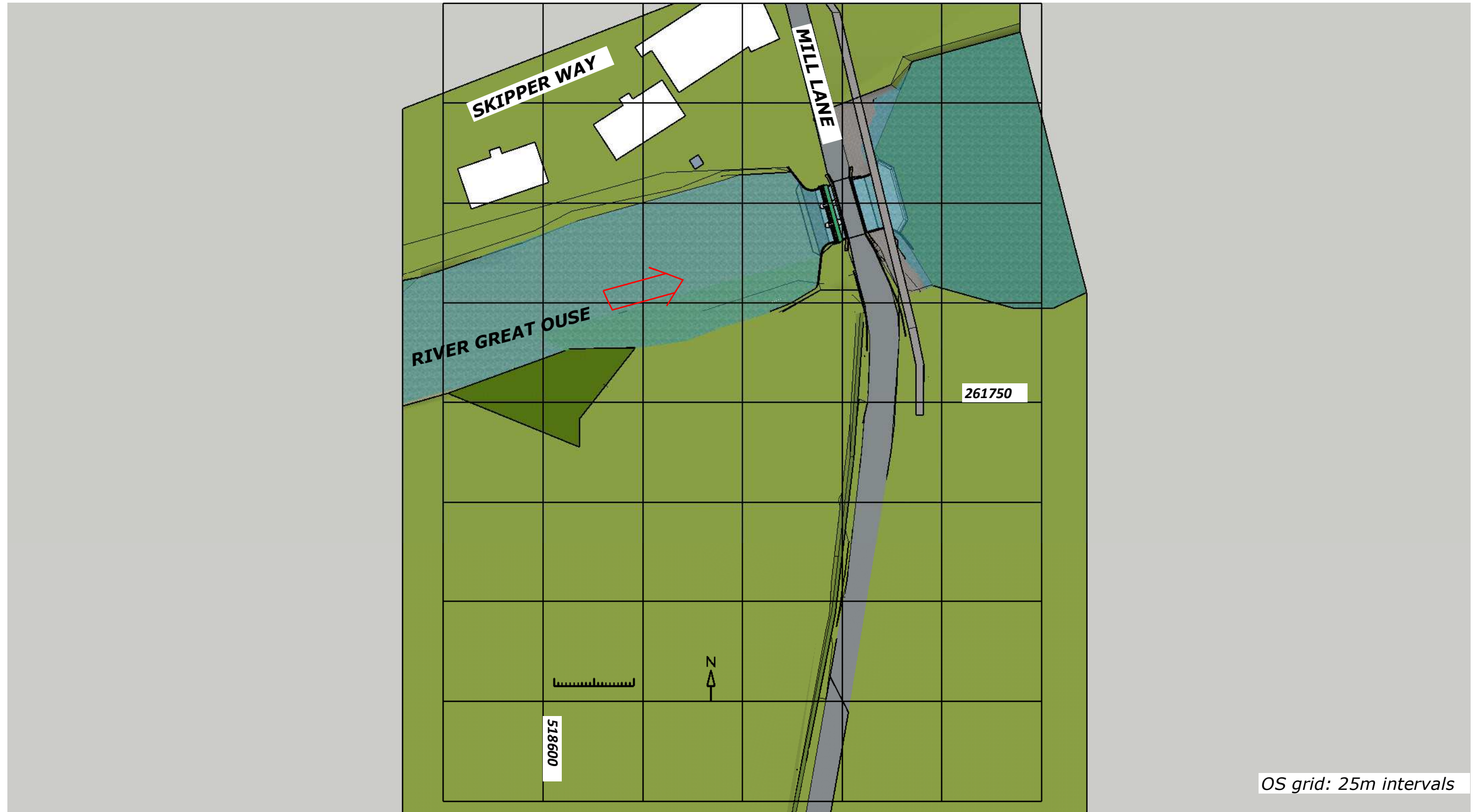
Existing buildings are modelled only

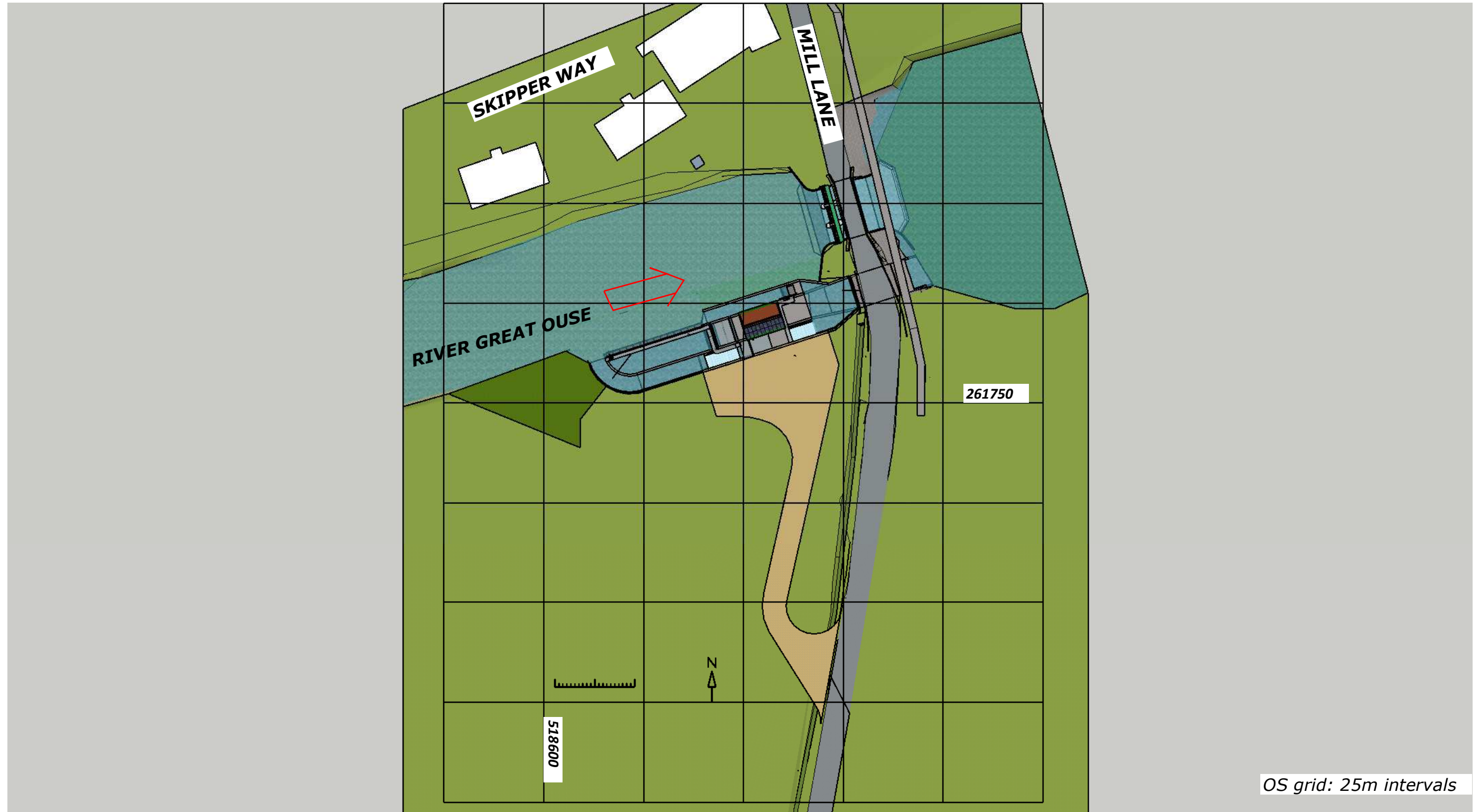
approximately as a visual reference:

do not scale.

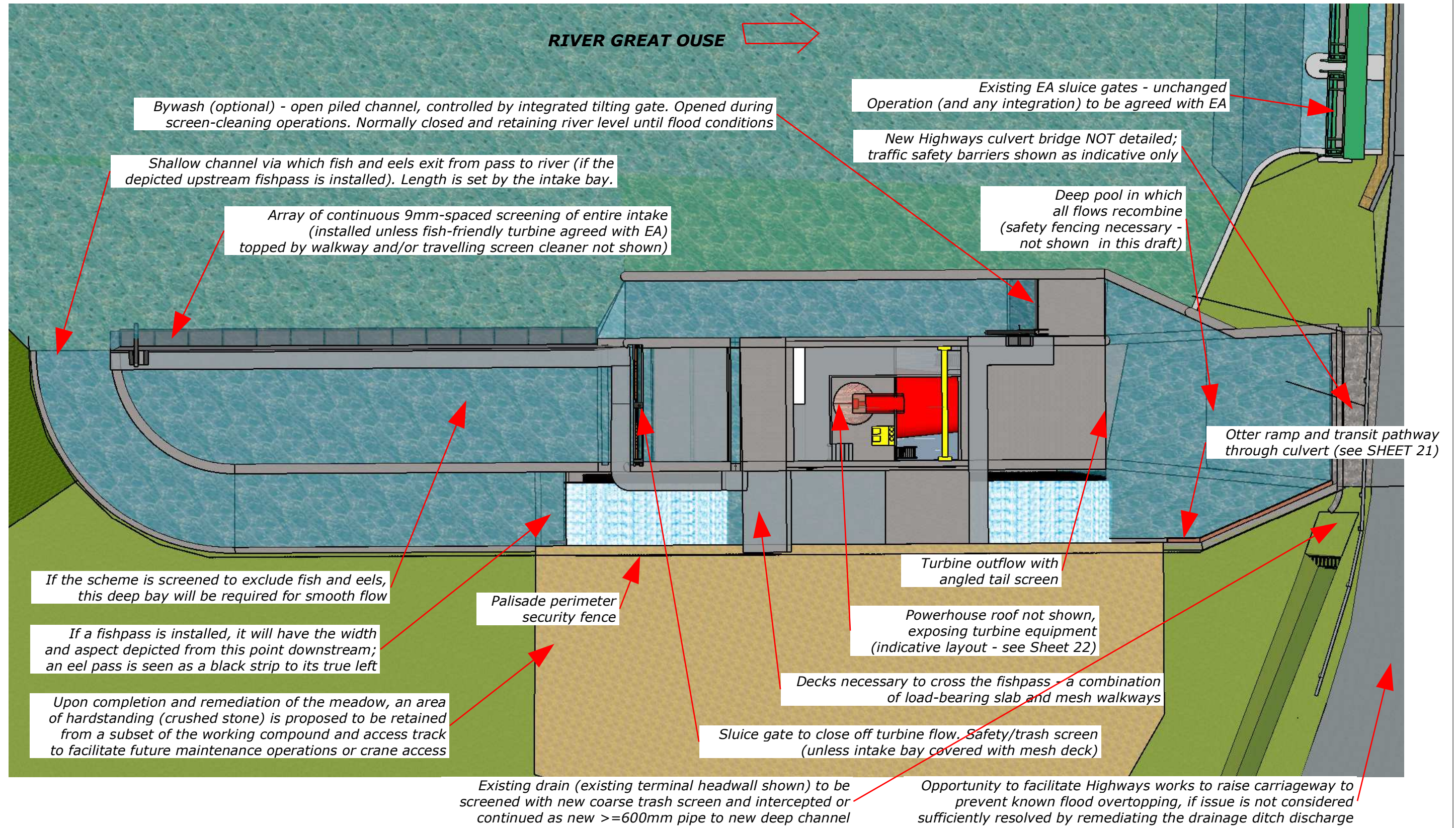
Ground contours approximated from

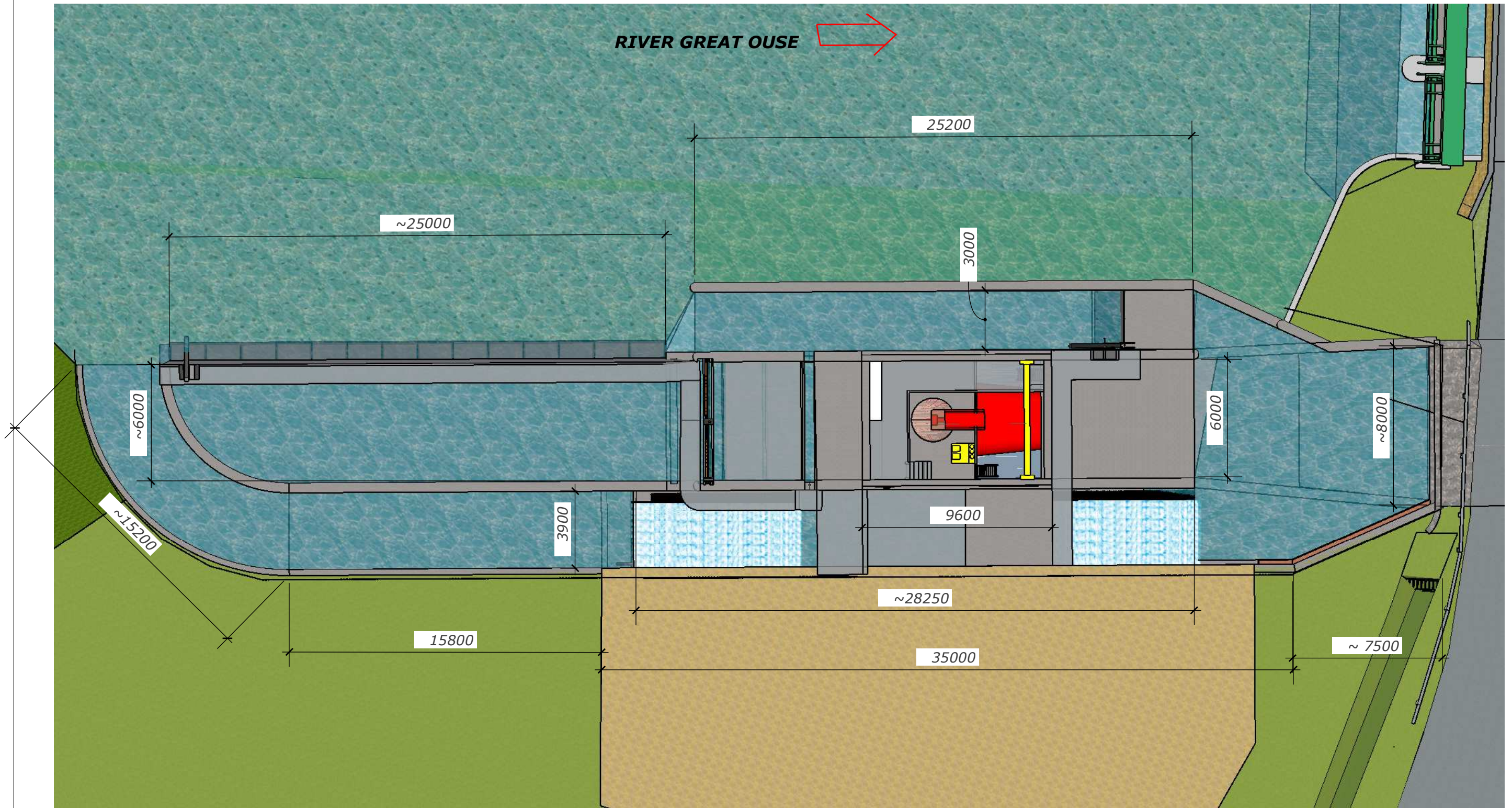
topographical survey: do not scale.

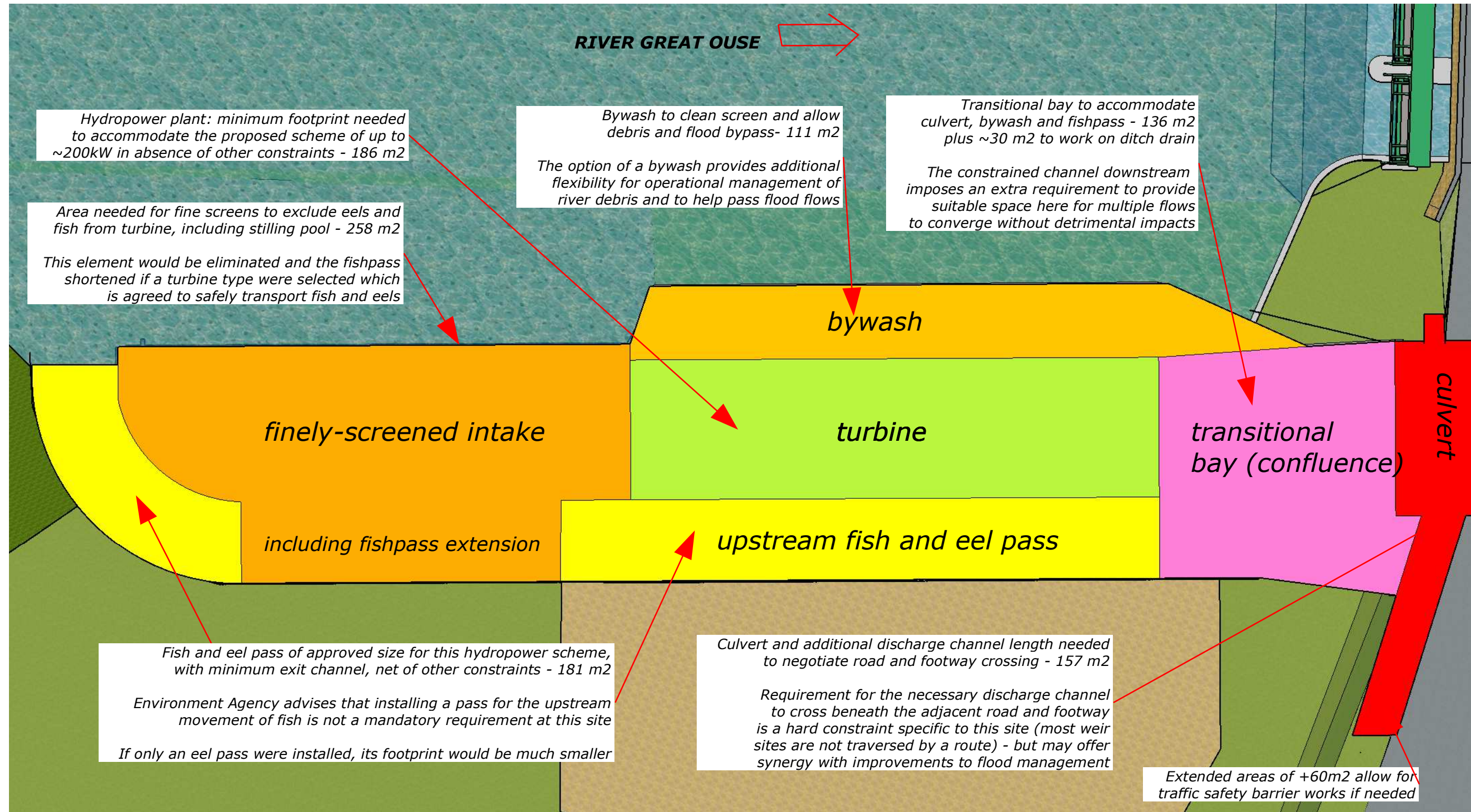


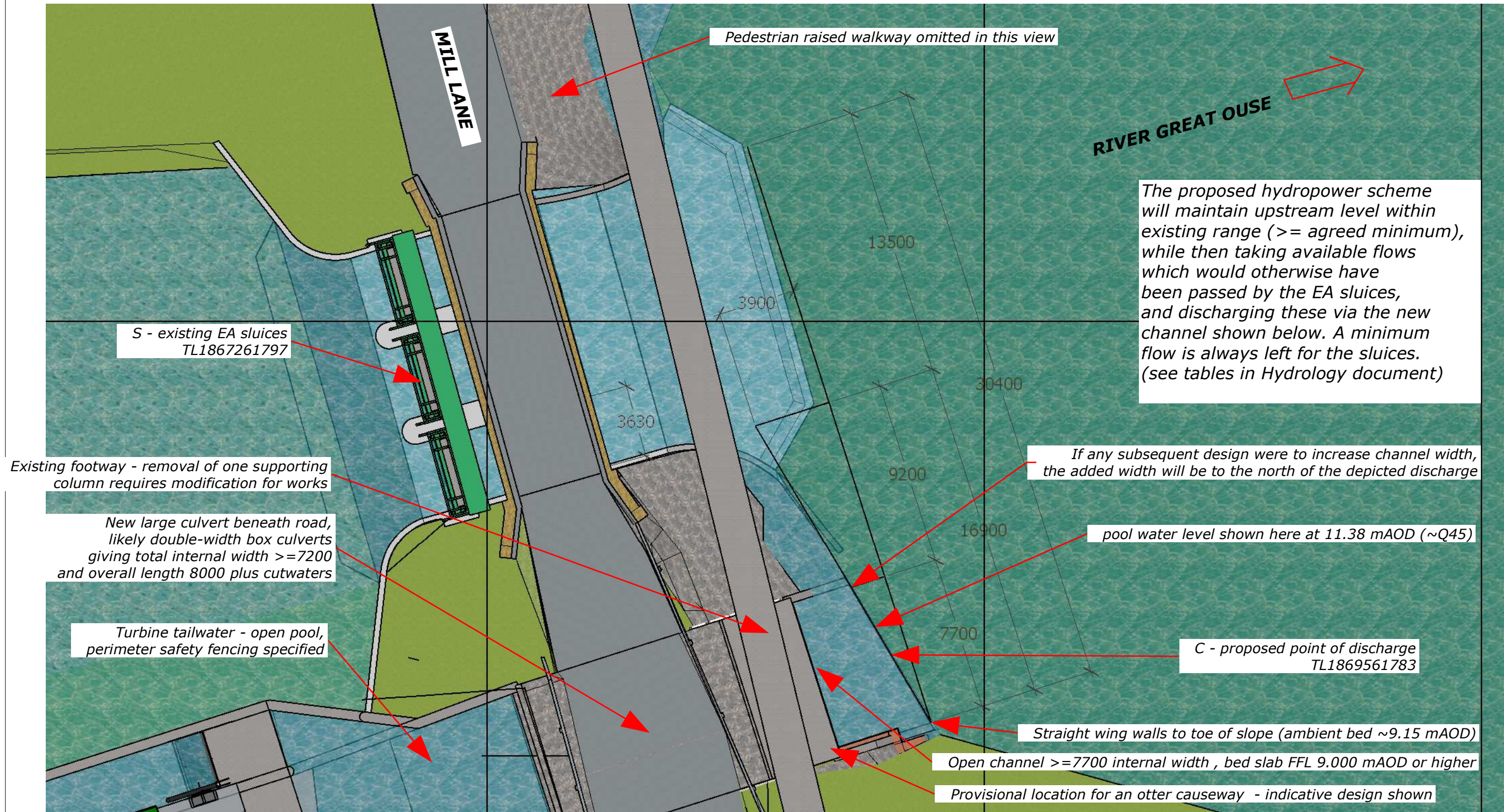


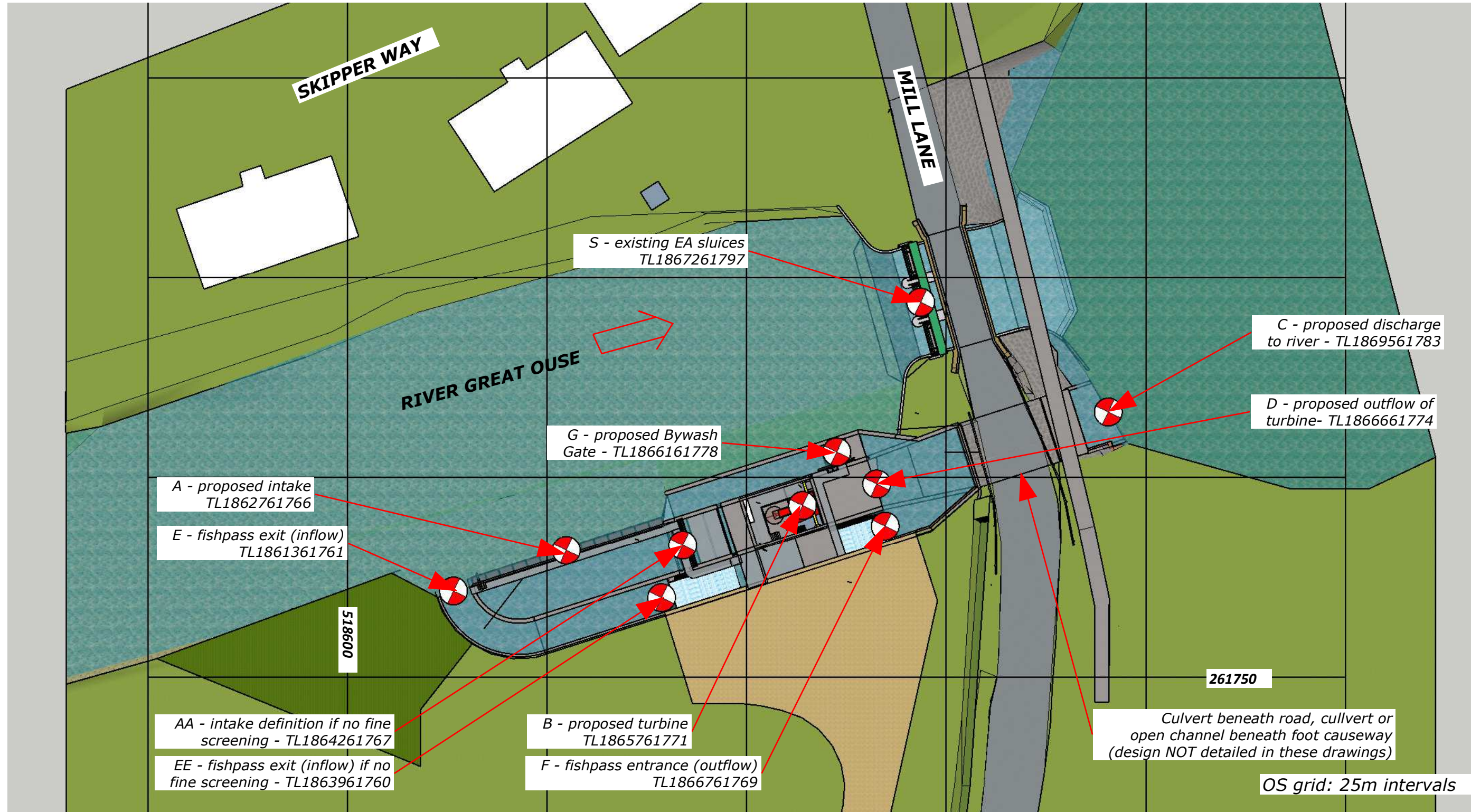


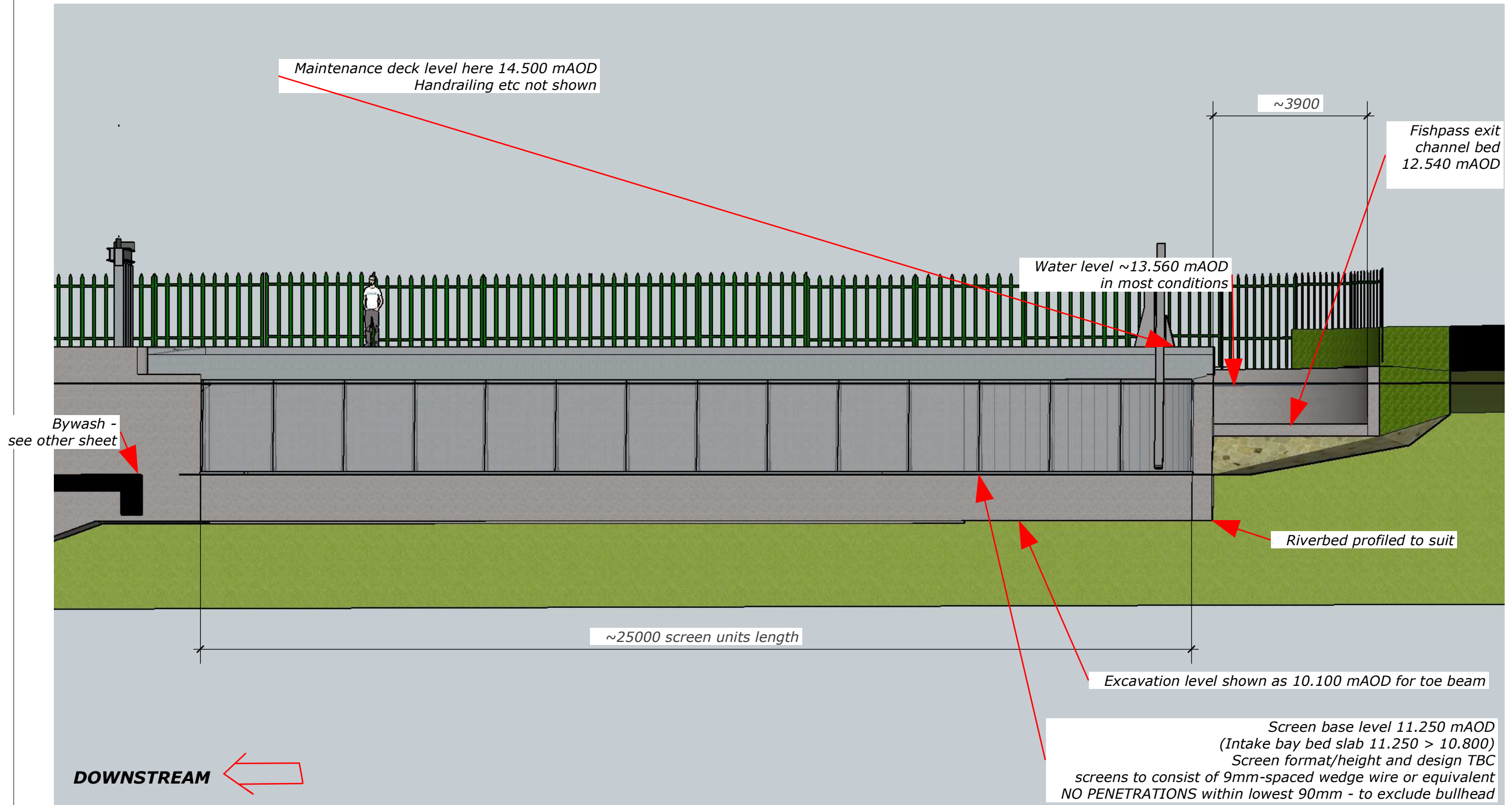


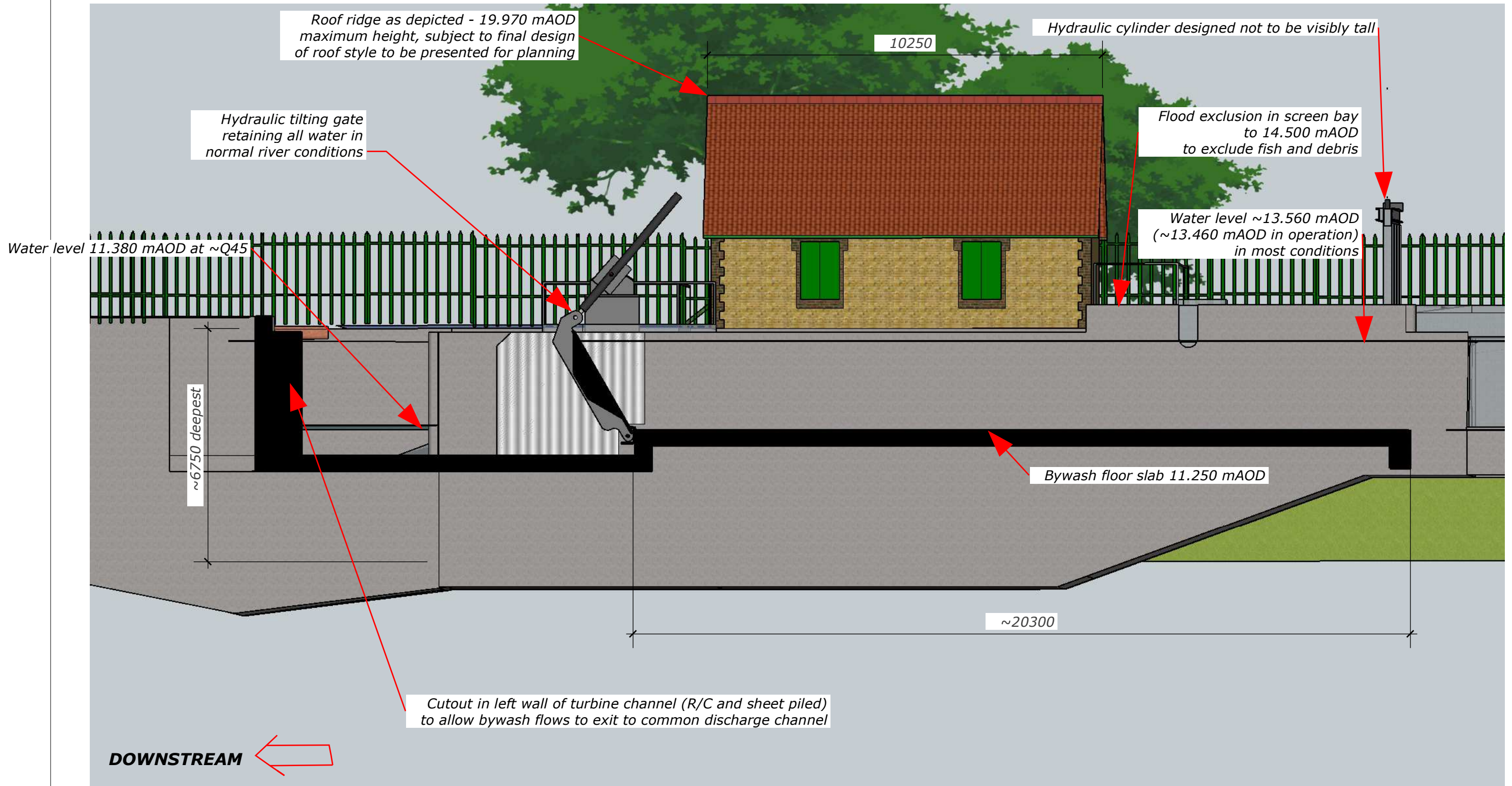


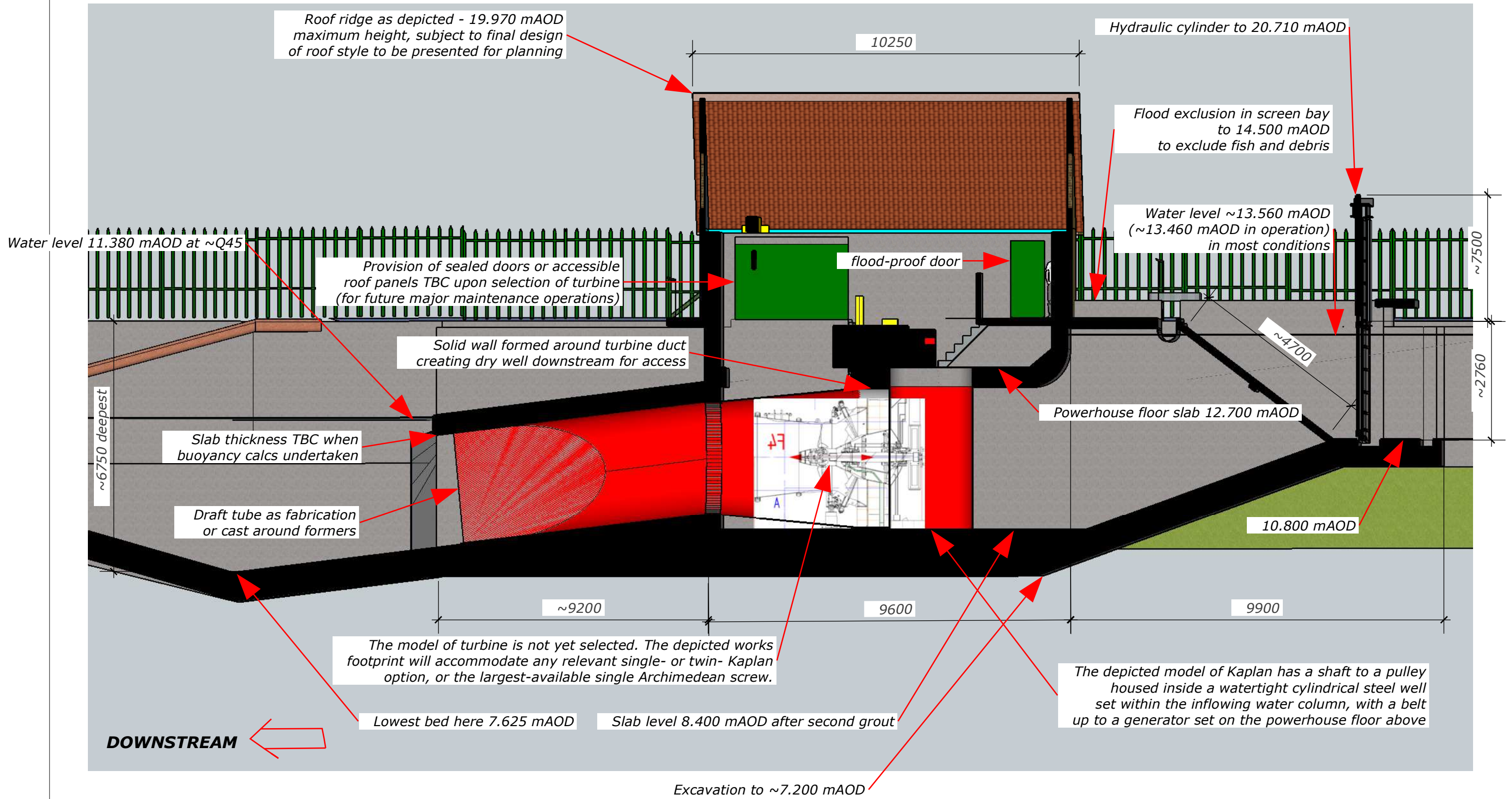


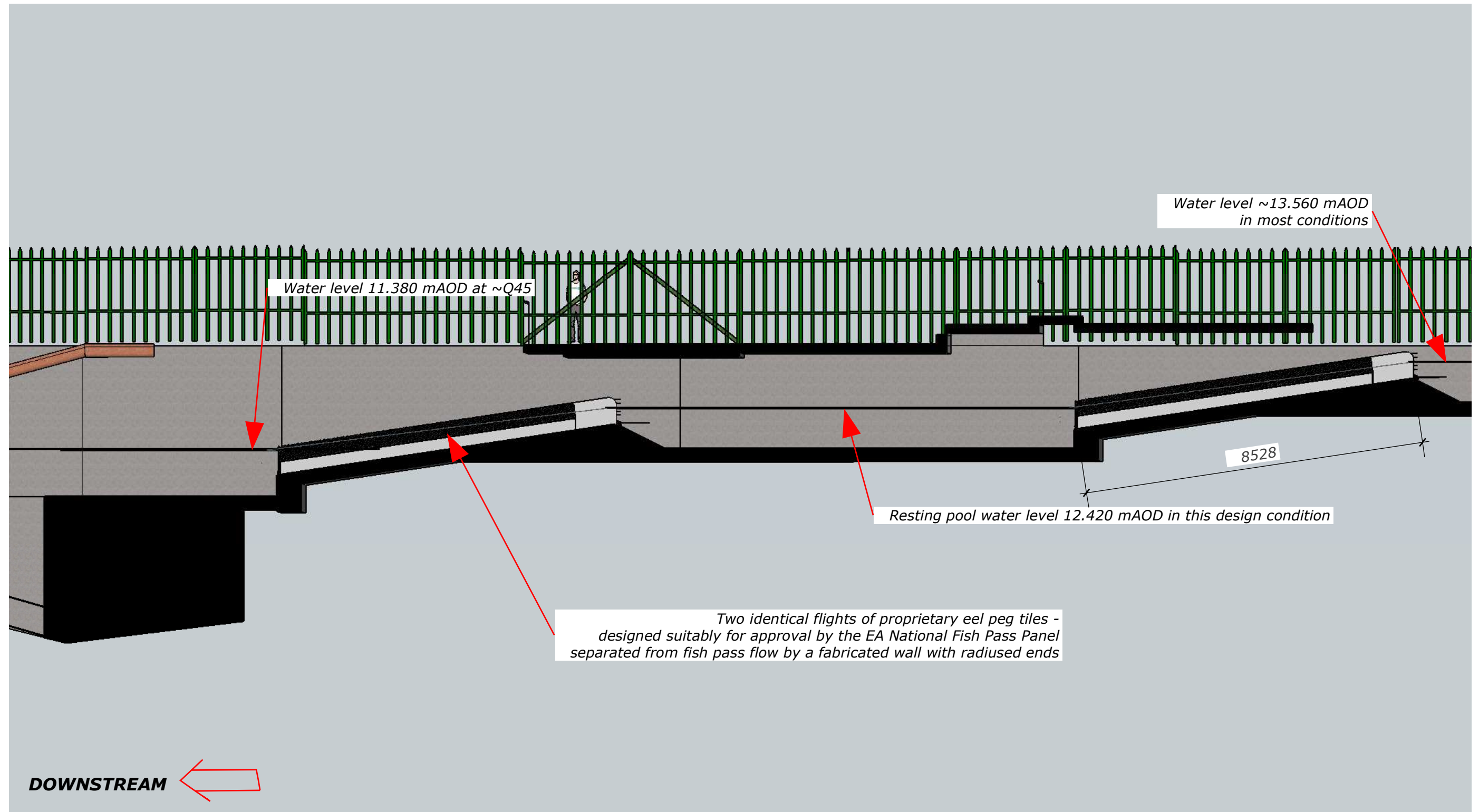


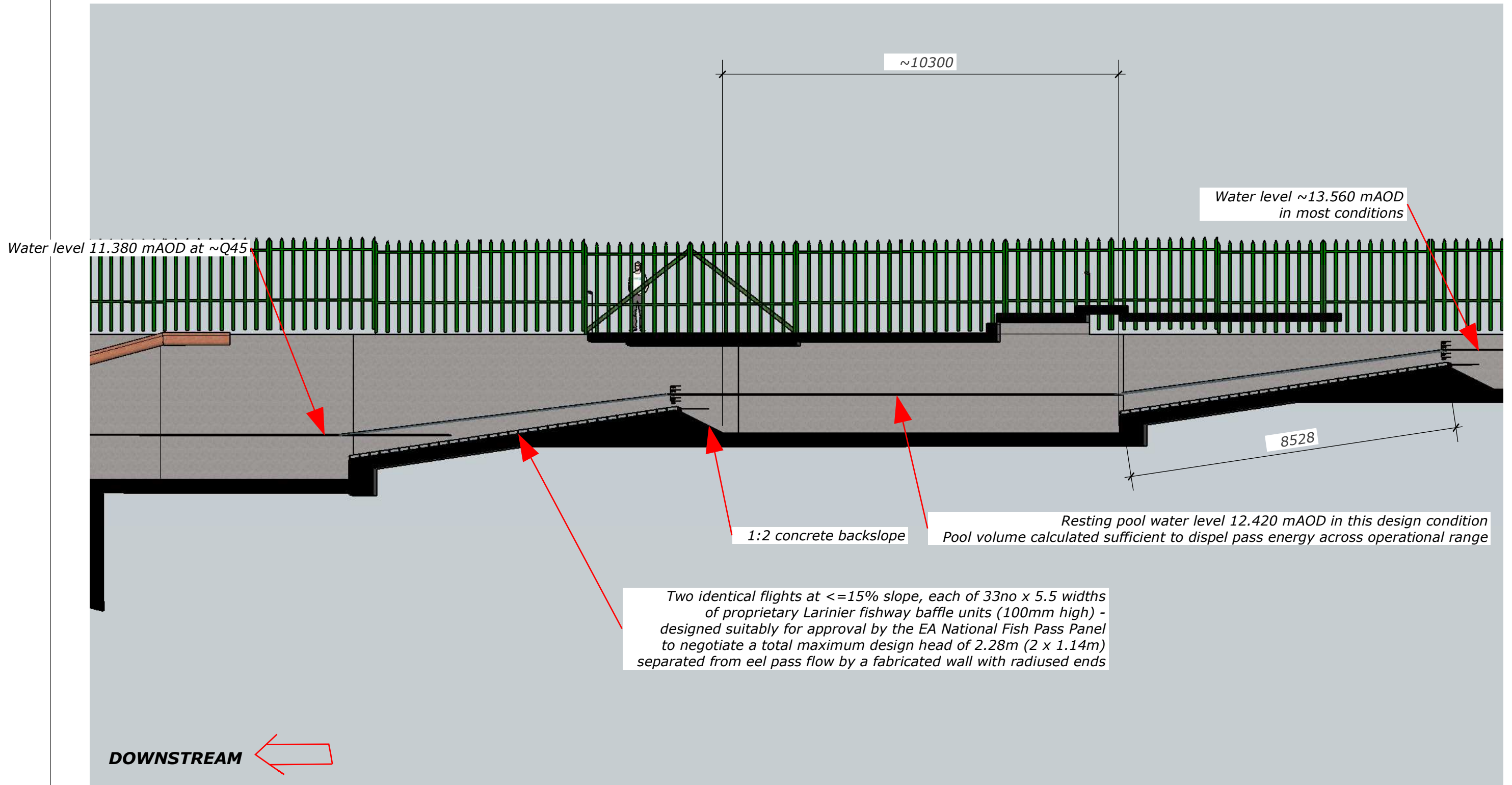


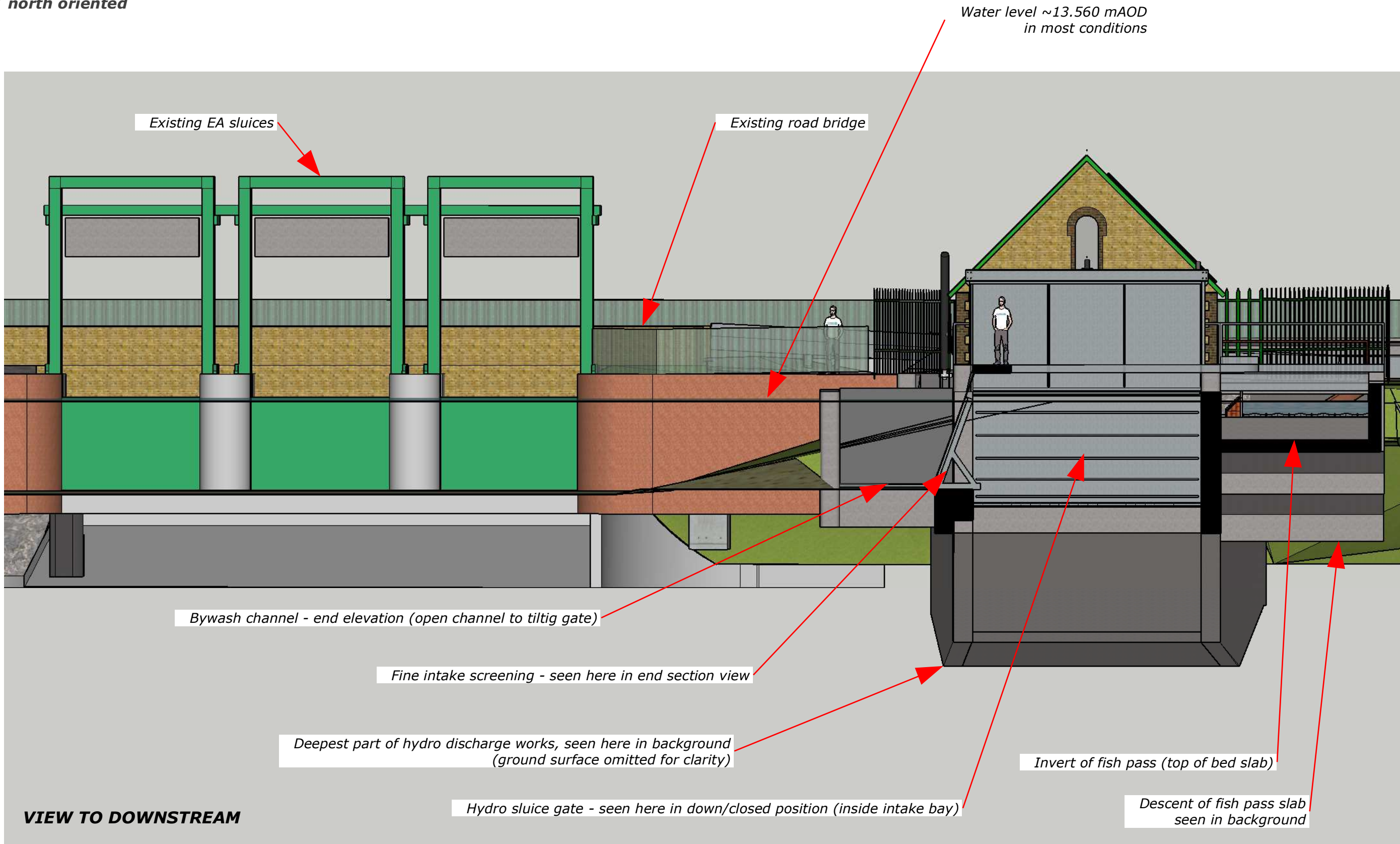


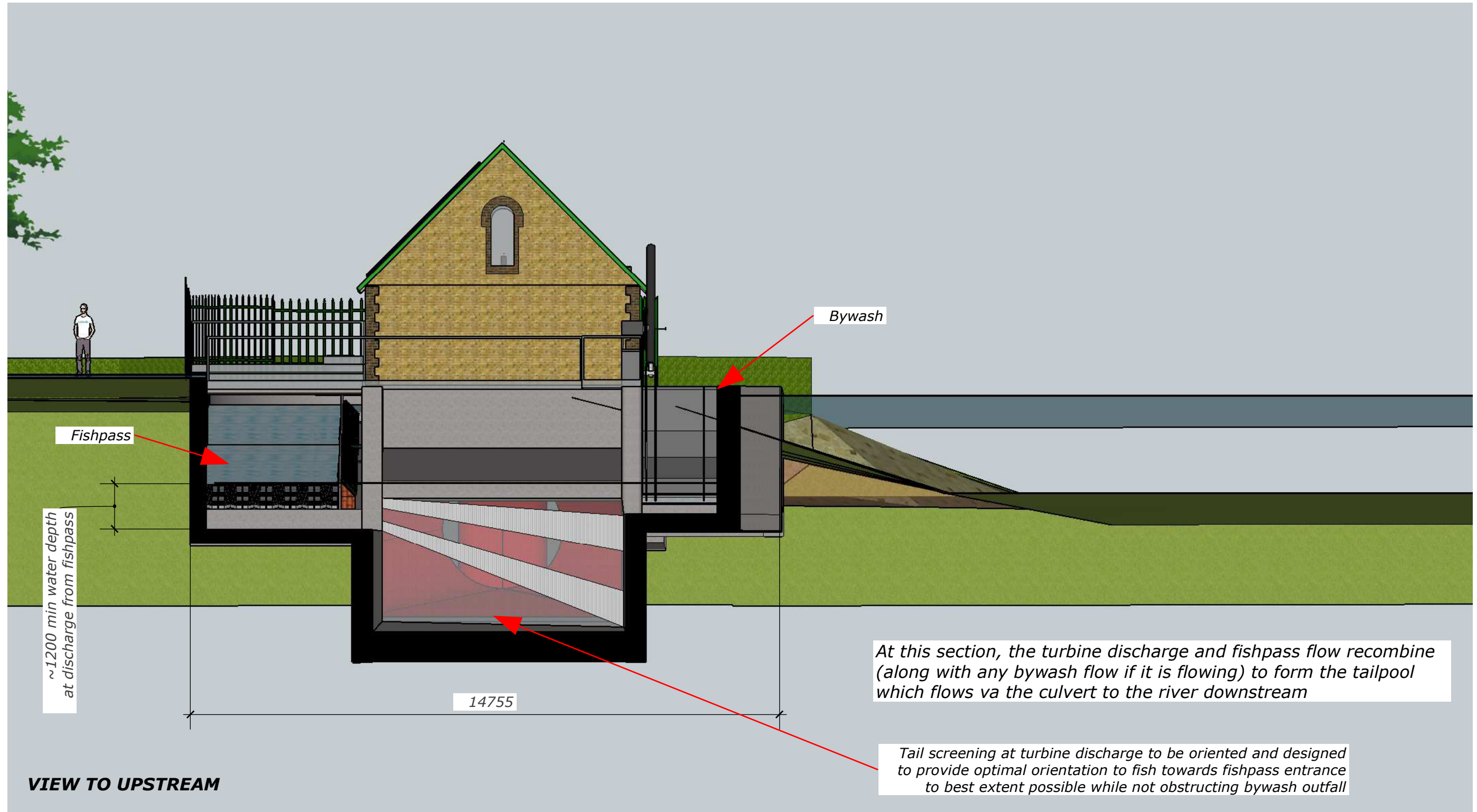


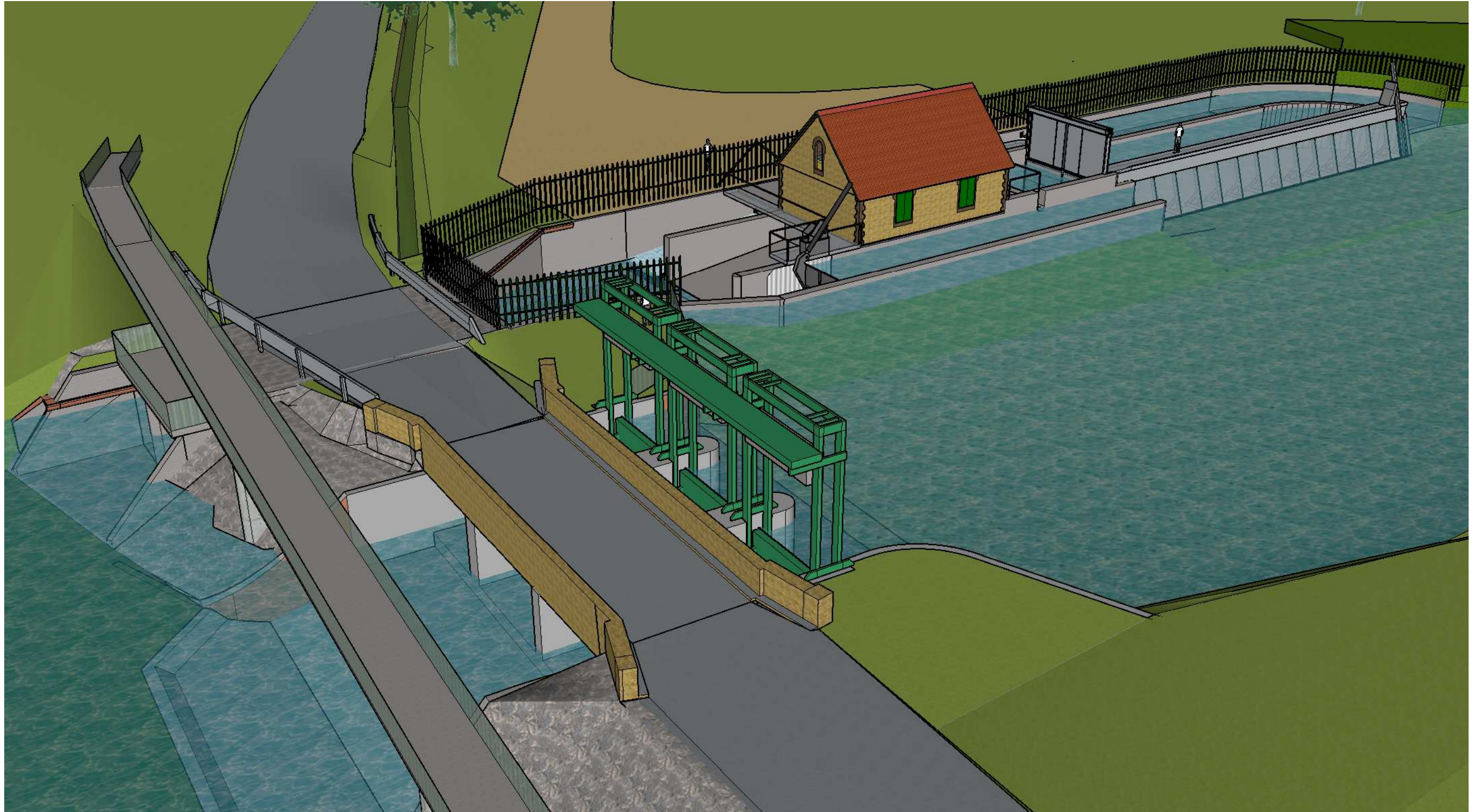


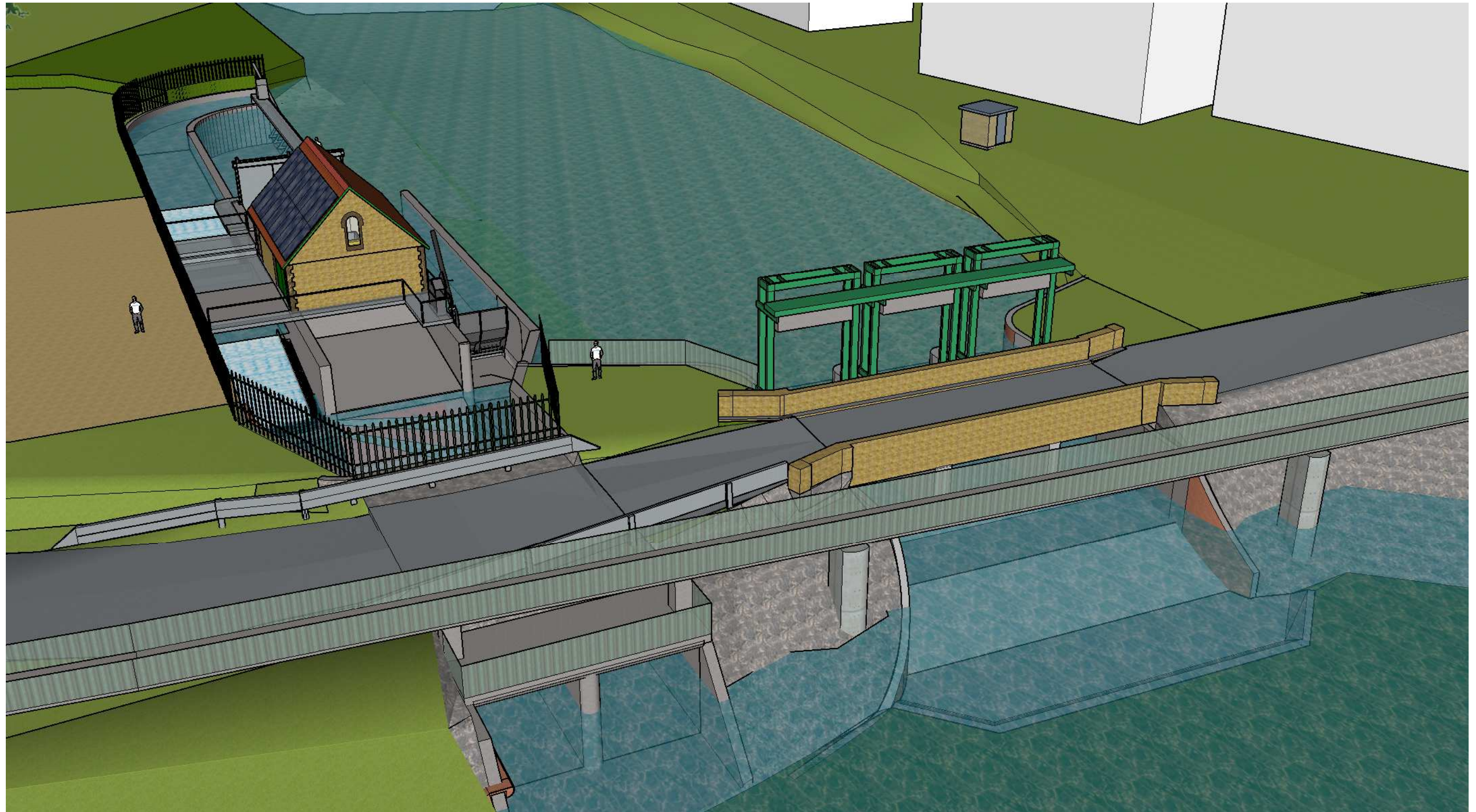


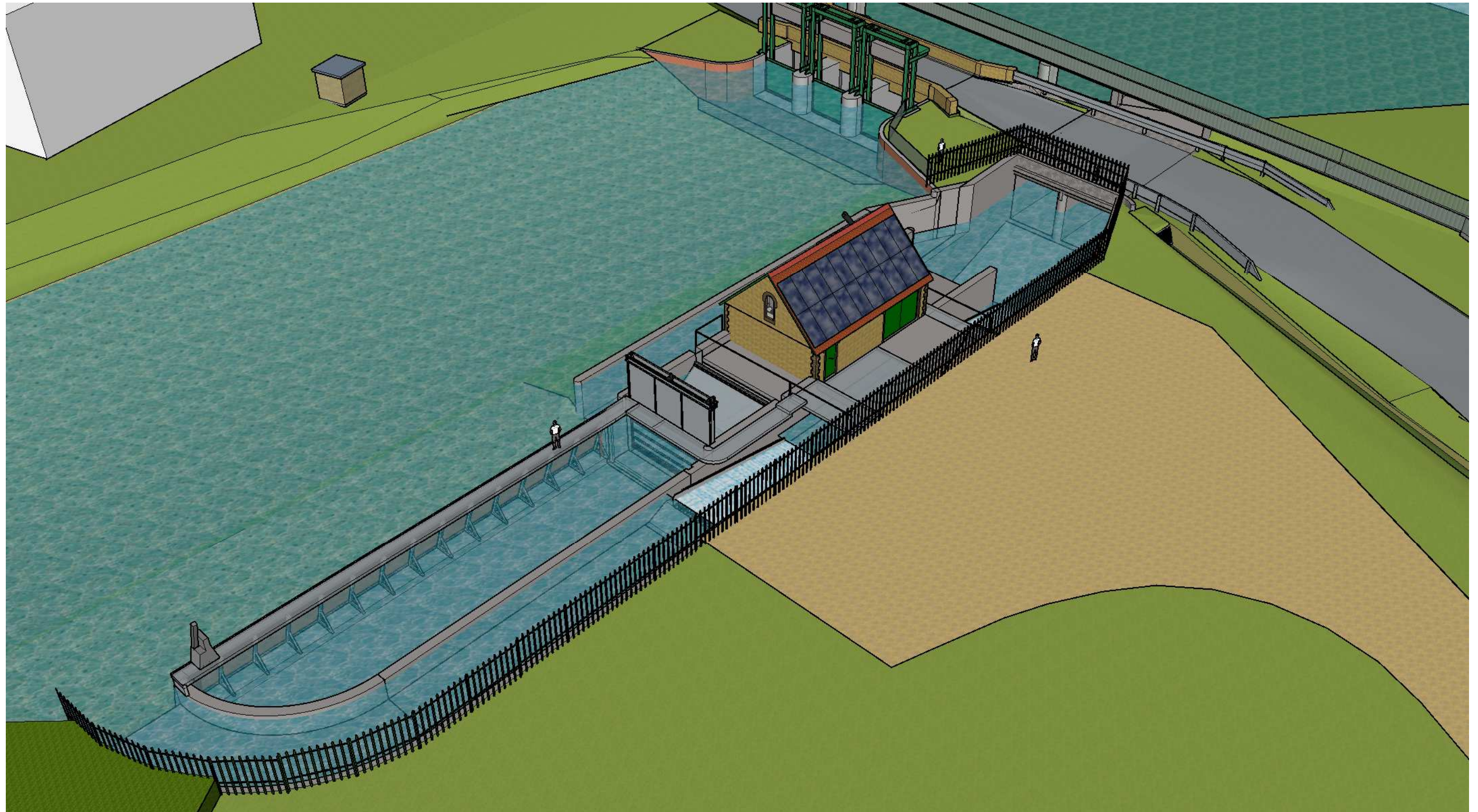




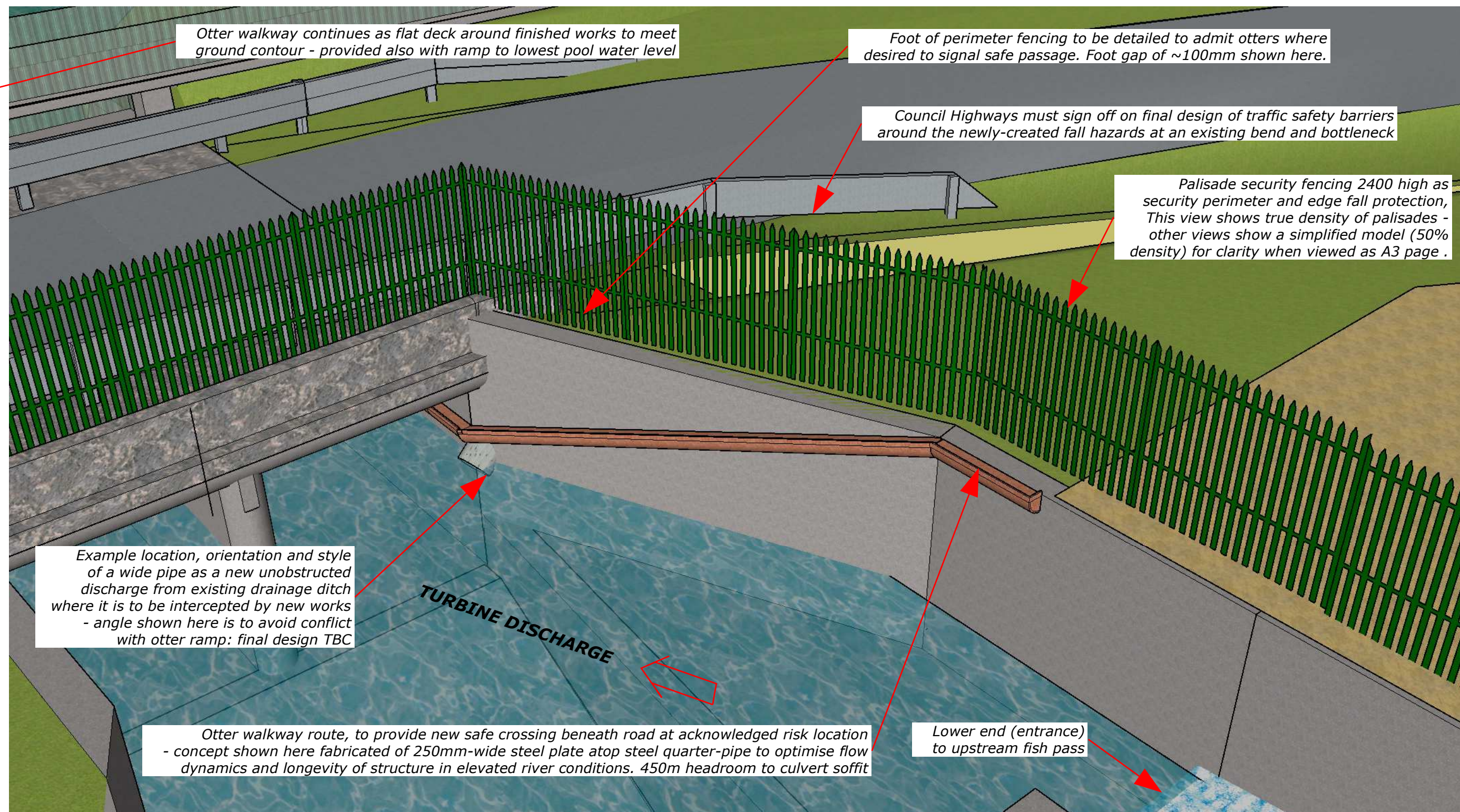


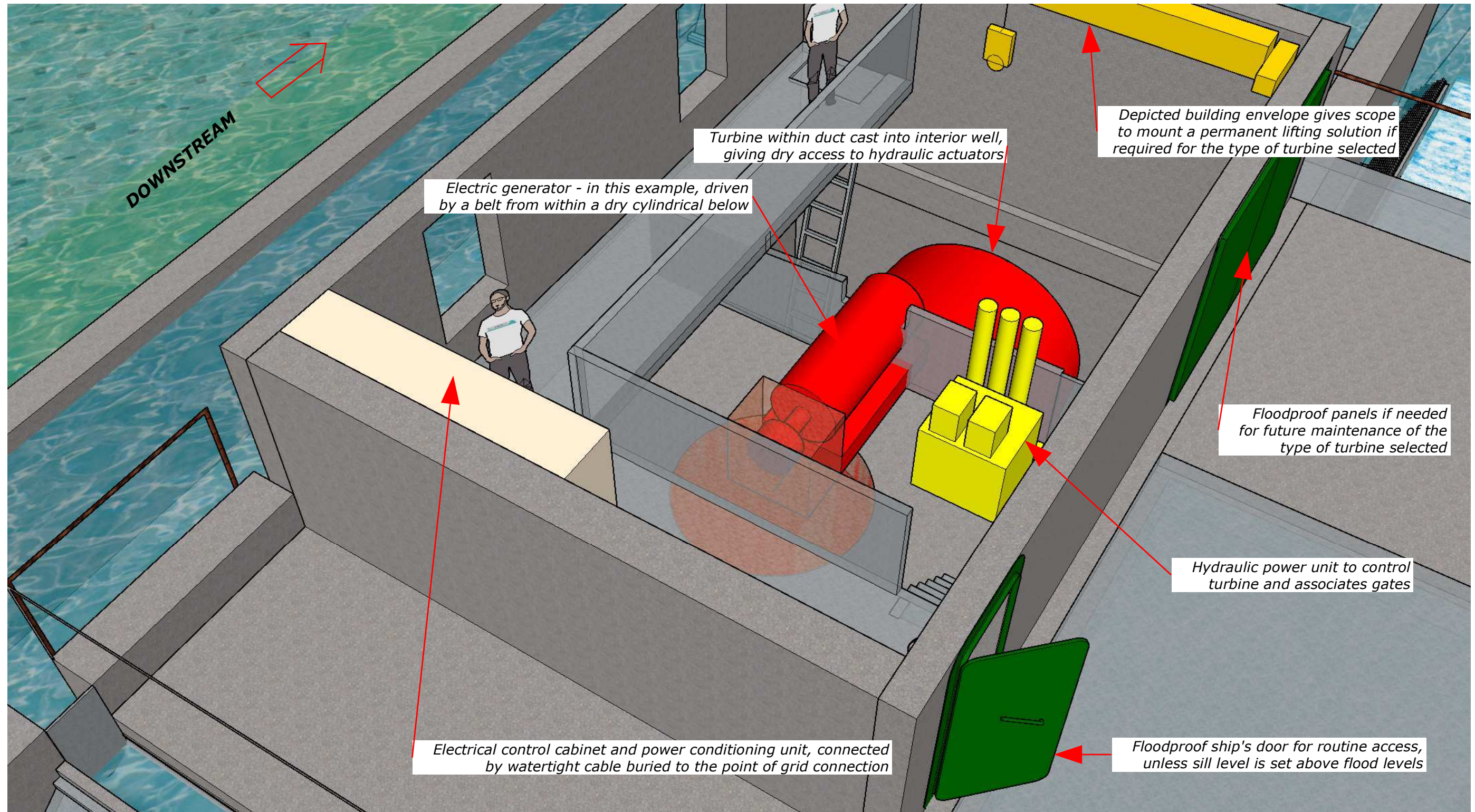




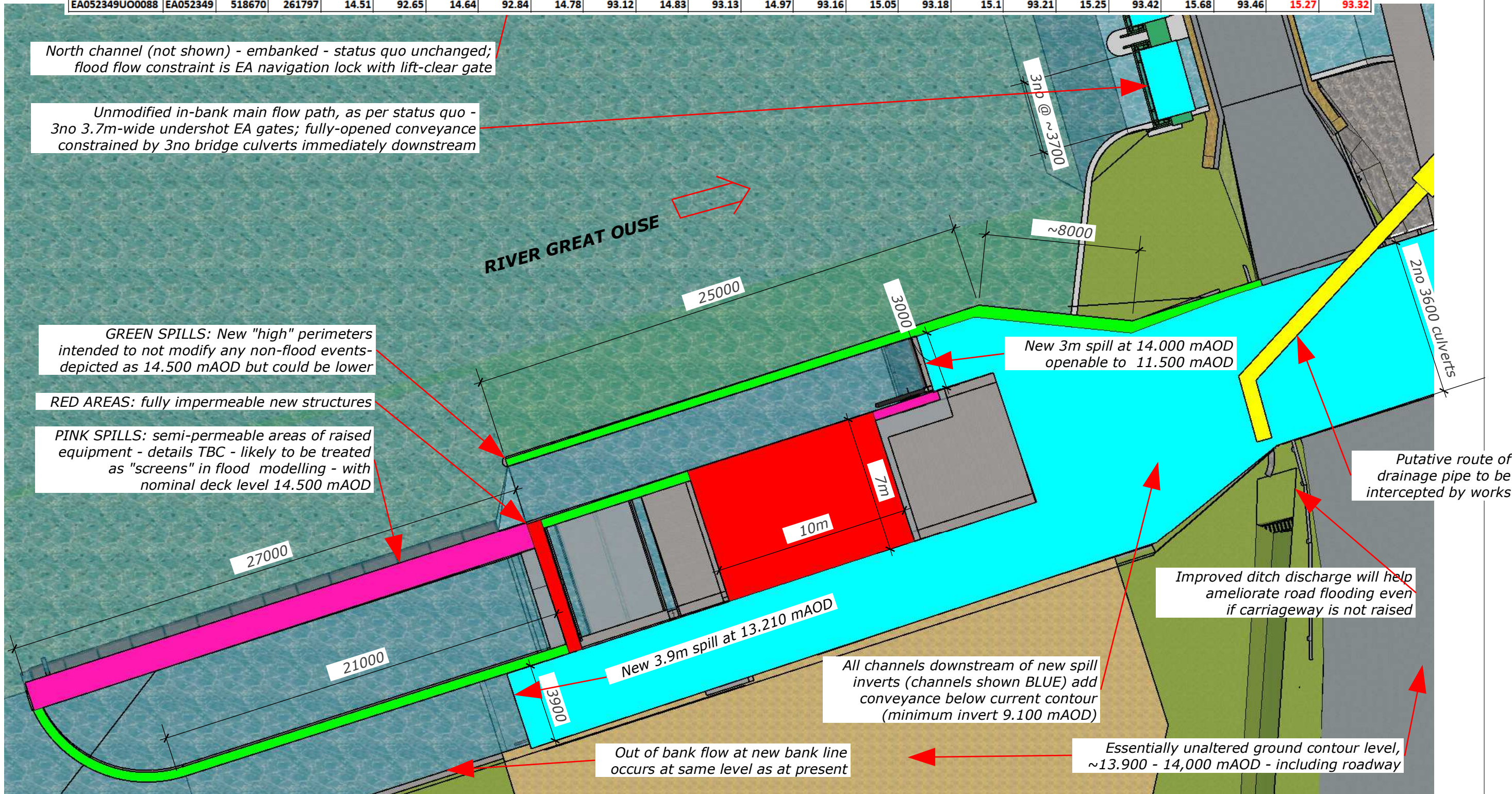




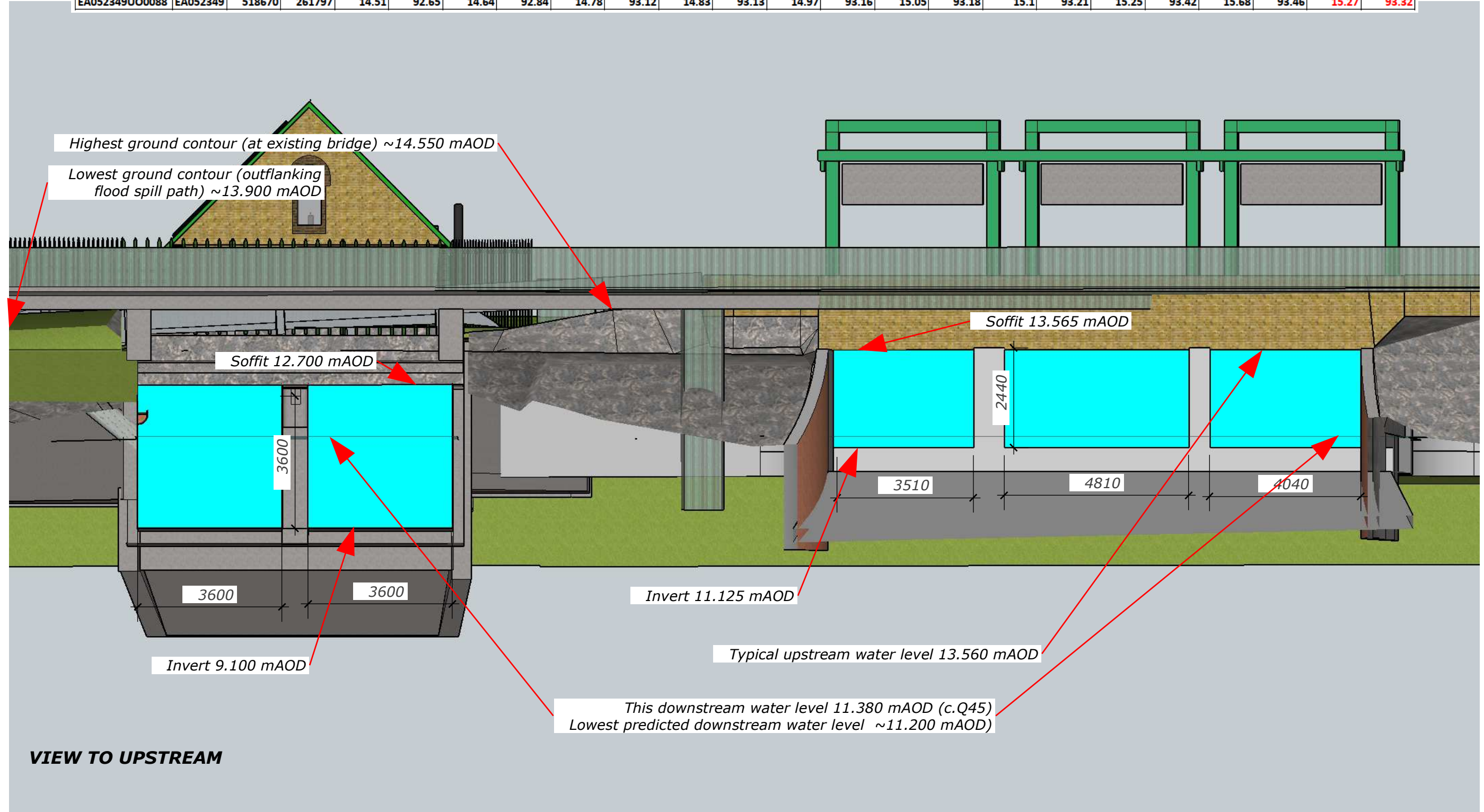




EA FLOOD DATA AT THESE SLUICES			1 in X year		5	5	10	10	20	20	25	25	50	50	75	75	100	100	200	200	1000	1000	100+CC	100+CC
			20%	20%	10%	10%	5%	5%	4%	4%	2%	2%	1.33%	1.33%	1%	1%	0.50%	0.50%	0.10%	0.10%	1%+20%cc	1%+20%cc		
EA Node	EA Model	Easting	Northing	LEVEL	FLOW	LEVEL	FLOW	LEVEL	FLOW	LEVEL	FLOW	LEVEL	FLOW	LEVEL	FLOW	LEVEL	FLOW	LEVEL	FLOW	LEVEL	FLOW	LEVEL	FLOW	
EA052349U00088	EA052349	518670	261797	14.51	92.65	14.64	92.84	14.78	93.12	14.83	93.13	14.97	93.16	15.05	93.18	15.1	93.21	15.25	93.42	15.68	93.46	15.27	93.32	



EA FLOOD DATA AT THESE SLUICES			1 in X year		5	5	10	10	20	20	25	25	50	50	75	75	100	100	200	200	1000	1000	100+CC	100+CC	
			20%	20%	10%	10%	5%	5%	4%	4%	2%	2%	1.33%	1.33%	1%	1%	0.50%	0.50%	0.10%	0.10%	1%+20%cc	1%+20%cc			
EA Node	EA Model	Easting	Northing	LEVEL	FLOW	LEVEL	FLOW	LEVEL	FLOW	LEVEL	FLOW	LEVEL	FLOW	LEVEL	FLOW	LEVEL	FLOW	LEVEL	FLOW	LEVEL	FLOW	LEVEL	FLOW	LEVEL	FLOW
EA052349U00088	EA052349	518670	261797	14.51	92.65	14.64	92.84	14.78	93.12	14.83	93.13	14.97	93.16	15.05	93.18	15.1	93.21	15.25	93.42	15.68	93.46	15.27	93.32		



VIEW TO UPSTREAM