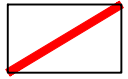




LEGEND

 APPLICATION SITE BOUNDARY



 **ASPECT HOUSE**
ASPECT BUSINESS PARK
BENNERLEY ROAD
NOTTINGHAM, NG6 8WR
T: 01159 647280
F: 01159 751576
www.slrconsulting.com

GAS PEAKING PROJECT

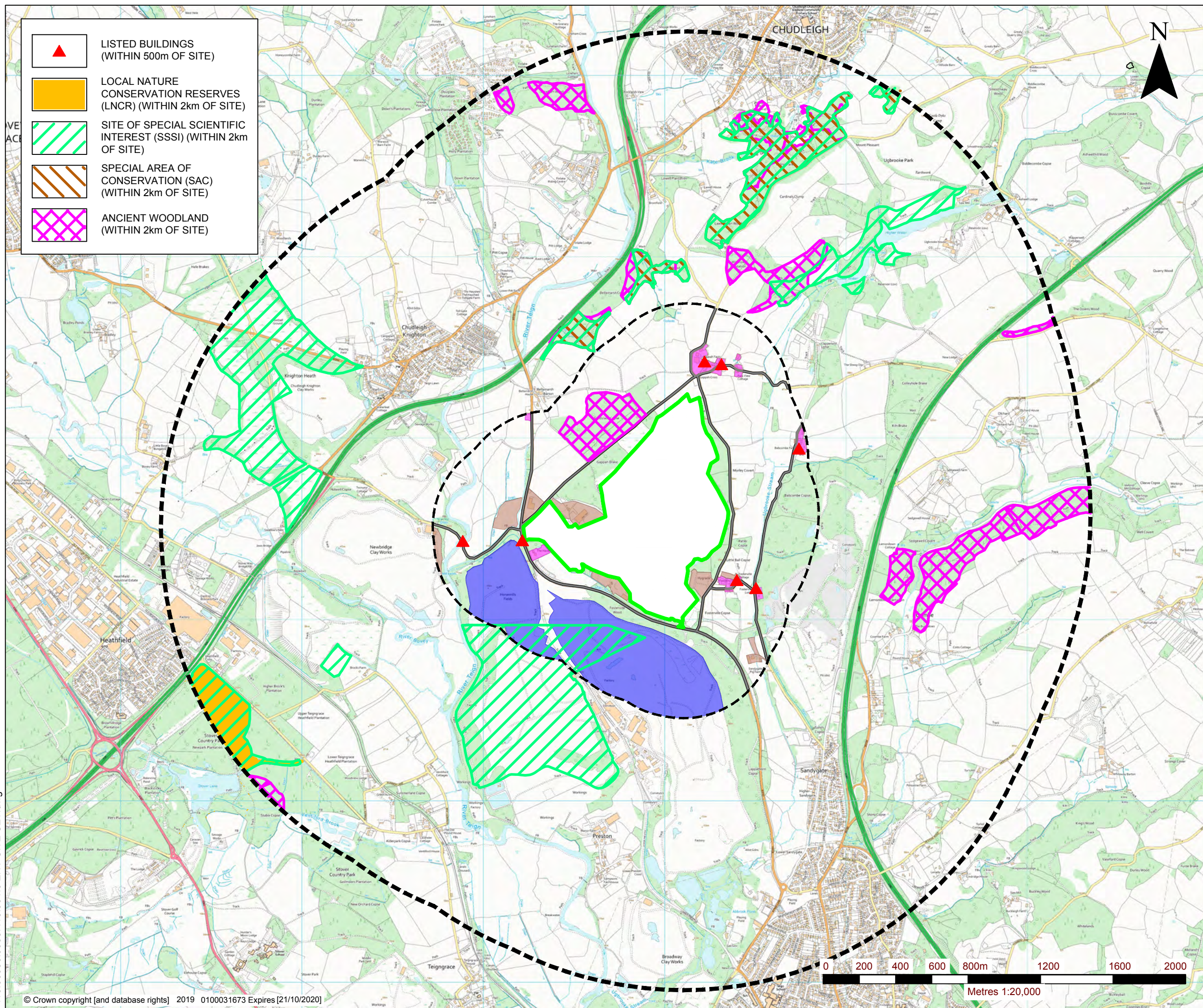
PLANNING

APPLICATION BOUNDARY PLAN

HL GPP1/2

Scale 1:500 @ A3 Date MARCH 2019

402.00036.00817.16.HLGP1-2.0 Proposed Site Layout.dwg



NOTES
 DESIGNATIONS OBTAINED ON 21.10.2019 FROM RESPECTIVE OFFICIAL GOVERNMENT WEBSITES. USED UNDER OPEN GOVERNMENT LICENCE (OGL).

LEGEND	
	ENVIRONMENTAL PERMIT BOUNDARY
	500m BUFFER OFFSET FROM SITE CENTRE
	2km BUFFER OFFSET FROM SITE CENTRE
	RESIDENTIAL
	SURFACE WATER BODIES / DITCHES
	MAIN ROAD NETWORK
	COMMERCIAL / INDUSTRIAL PREMISES
	WOODLAND
	FIELDS
	CLAY WORKS



SLR
 global environmental solutions

3RD FLOOR
 THE BREW HOUSE
 JACOB STREET
 BRISTOL, BS2 0EQ
 T: 01179 064280
 www.slrconsulting.com

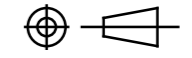
HEATHFIELD LANDFILL
 ENVIRONMENTAL PERMIT VARIATION APPLICATION
 ENVIRONMENTAL SITE SETTING
DRAWING 001

Scale: 1:20 000 (A3) Date: OCTOBER 2019

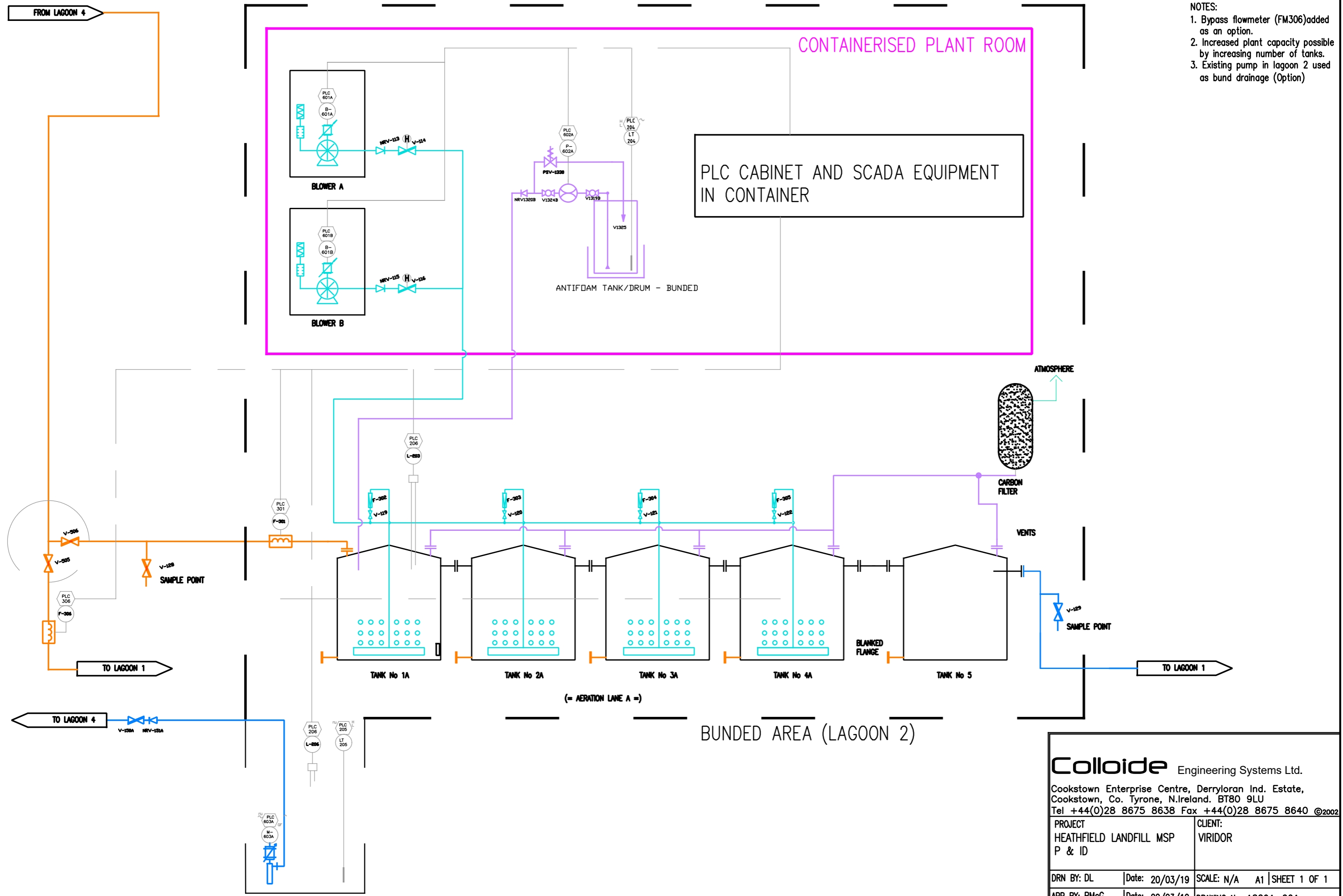
416.00036.00887.13.001.0 ENV SITE SET.dwg

© Crown copyright [and database rights] 2019 0100031673 Expires [21/10/2020]

© This drawing and its content are the copyright of SLR Consulting Ltd and may not be reproduced or amended except by prior written permission. SLR Consulting Ltd accepts no liability for any amendments made by other persons.

THIRD ANGLE PROJECTION.		Rev No.	Revision Note	Date	Signature	App
		A	FIRST ISSUE	20/04/19	DL	PMG
		B	UPDATED P&ID	01/05/19	EL	PMG

- NOTES:
1. Bypass flowmeter (FM306) added as an option.
 2. Increased plant capacity possible by increasing number of tanks.
 3. Existing pump in lagoon 2 used as bund drainage (Option)



Colloide Engineering Systems Ltd.
 Cookstown Enterprise Centre, Derryloran Ind. Estate,
 Cookstown, Co. Tyrone, N.Ireland. BT80 9LU
 Tel +44(0)28 8675 8638 Fax +44(0)28 8675 8640 ©2002

PROJECT HEATHFIELD LANDFILL MSP P & ID	CLIENT: VIRIDOR
DRN BY: DL Date: 20/03/19	SCALE: N/A A1 SHEET 1 OF 1
APP BY: PMcG Date: 22/03/19	DRAWING No: 18291-001

10

9

8

7

6

5

4

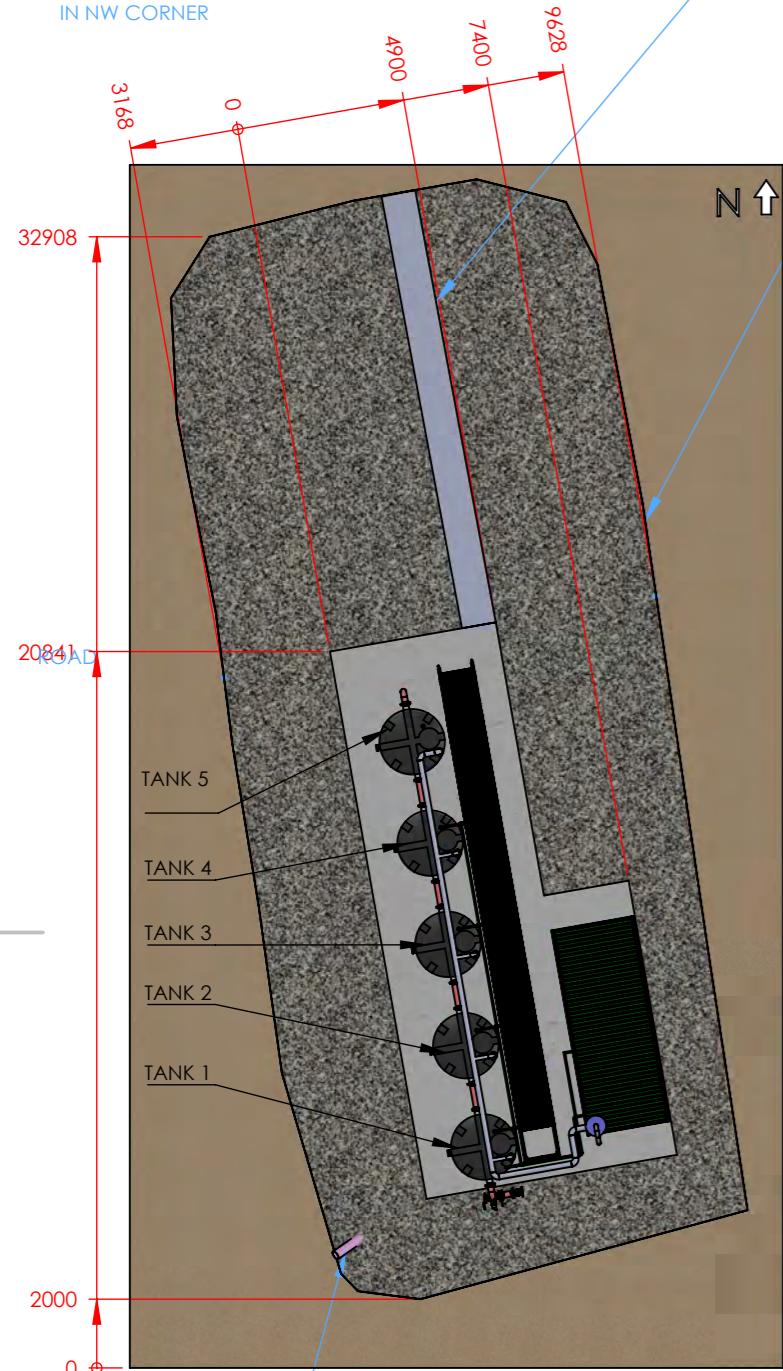
3

2

1

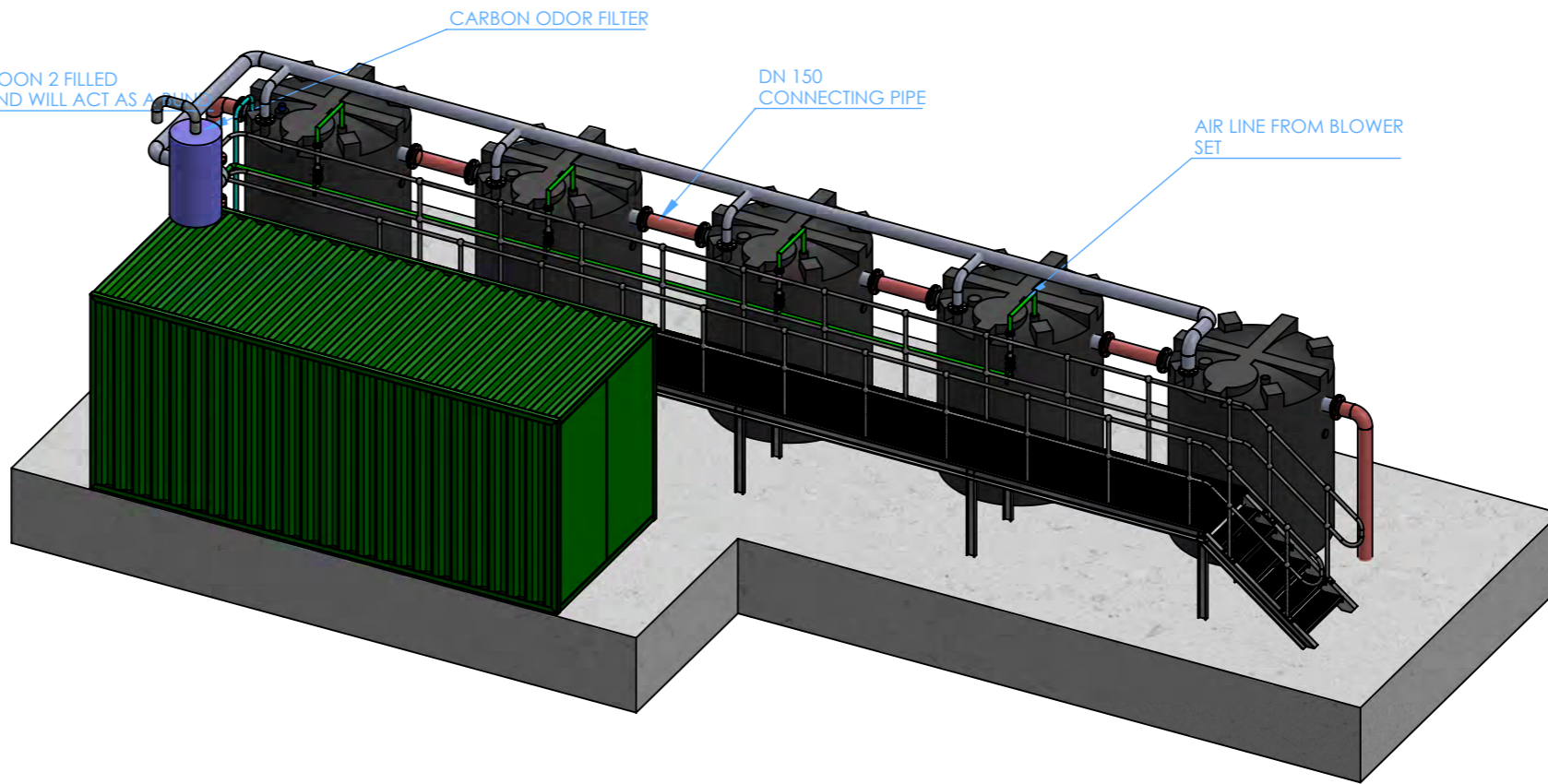
GATED ACCESS TO SITE
IN NW CORNER

1000mm WIDE PEDESTRIAN
PATH TO EDGE OF LAGOON



LAGOON SUMP PUMP
CONTAINED IN PIPE
PUMP IS FLYGT 2620
50HZ 2.2 KW

PLAN VIEW
SHOWING LAGOON



CARBON ODOR FILTER

DN 150
CONNECTING PIPE

AIR LINE FROM BLOWER
SET

LAGOON 2 FILLED
IN AND WILL ACT AS A
SUMP

20 FOOT CONTAINERISED
CONTAINING
DUTY / STANDBY
ROOTS TYPE BLOWER
ANTIFOAM DOSING
CONTROL PANEL

CARBON ODOR FILTER

DN 150
METHANE MANIFOLD

F-301
FLOWMETER

1" SAMPLING
POINT
C/W 1" BSP
ISOLATION
VALVE

V-506

DN 150
OUTLET
PIPEWORK

GALVANISED
MILD
STEEL
ACCESS PLATFORM

FLOWFORGE GRATING

1" SAMPLING POINT
C/W 1" BSP ISOLATION
VALVE

PROCESS OUTLET
RETURN TO LAGOON 1

TANK 5
NO AERATION

TANK 4

TANK 3

TANK 2

TANK 1
5 m³ GROSS
VOLUME

NOTES :

- DO NOT SCALE
- ALL DIMENSIONS IN mm
- ALL SS TO PASSIVATED AND PICKLED

REV.	DESCRIPTION	DRN' BY	CHKD BY	APP'D BY	DATE
C	UPDATED POST HAZOP	BL	MM	PMG	01/05/2019
B	FOR REVIEW	BL	MMK	PMG	27/03/2019
A	FOR TENDER	BL	MMK	PMG	27/07/2018

REVISIONS



Originated	Drawn	Checked	Approved
BL	BL	MMK	PMG
Date: 19.01.18	Date: 19.01.18	Date: 19.01.18	Date: 19.01.18
Scale: 1:50	Status: FOR APPROVAL		

Project Title
Heathfield Landfill Site
Methane Stripping Plant

Drawing Title
GENERAL ARRANGEMENT
METHANE STRIPPING PLANT

Client Drawing No. 18291-300	REV C
CES Drawing No. 18291-300	SCALE A3

10

9

8

7

6

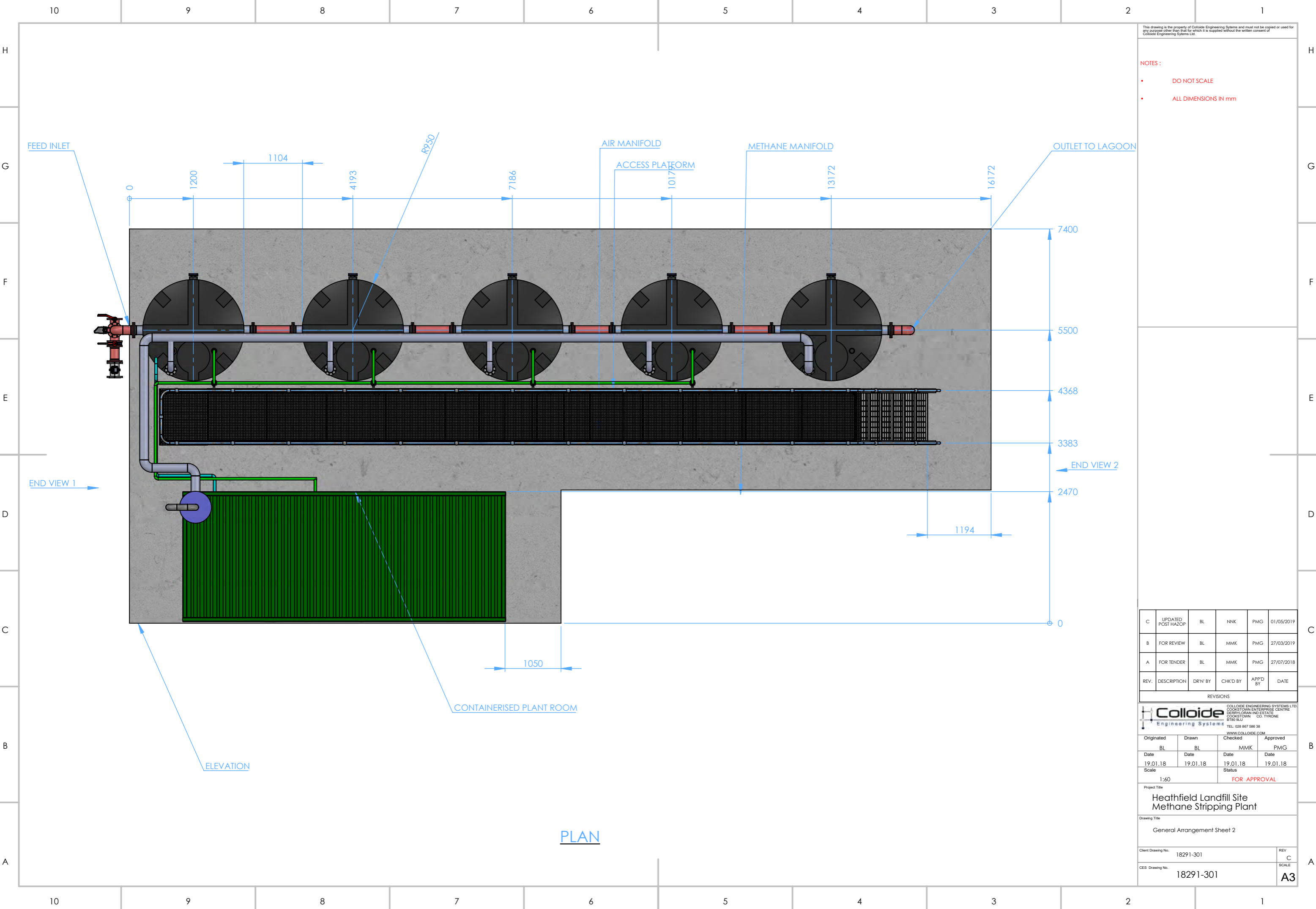
5

4

3

2

1



This drawing is the property of Colloide Engineering Systems and must not be copied or used for any purpose other than that for which it is supplied without the written consent of Colloide Engineering Systems Ltd.

- NOTES :
- DO NOT SCALE
 - ALL DIMENSIONS IN mm

REV.	DESCRIPTION	DRN' BY	CHKD BY	APP'D BY	DATE
C	UPDATED POST HAZOP	BL	NNK	PMG	01/05/2019
B	FOR REVIEW	BL	MMK	PMG	27/03/2019
A	FOR TENDER	BL	MMK	PMG	27/07/2018

REVISIONS

COLLOIDE ENGINEERING SYSTEMS LTD
 COOKSTOWN ENTERPRISE CENTRE
 DERRYLORAN INDUSTRIAL ESTATE
 COOKSTOWN CO. TYRONE
 TEL: 098 867 586 38
 WWW.COLLOIDE.COM

Originated	Drawn	Checked	Approved
BL	BL	MMK	PMG
Date 19.01.18	Date 19.01.18	Date 19.01.18	Date 19.01.18
Scale 1:60		Status FOR APPROVAL	

Project Title
Heathfield Landfill Site Methane Stripping Plant

Drawing Title
General Arrangement Sheet 2

Client Drawing No. 18291-301	REV C
CES Drawing No. 18291-301	SCALE A3

PLAN

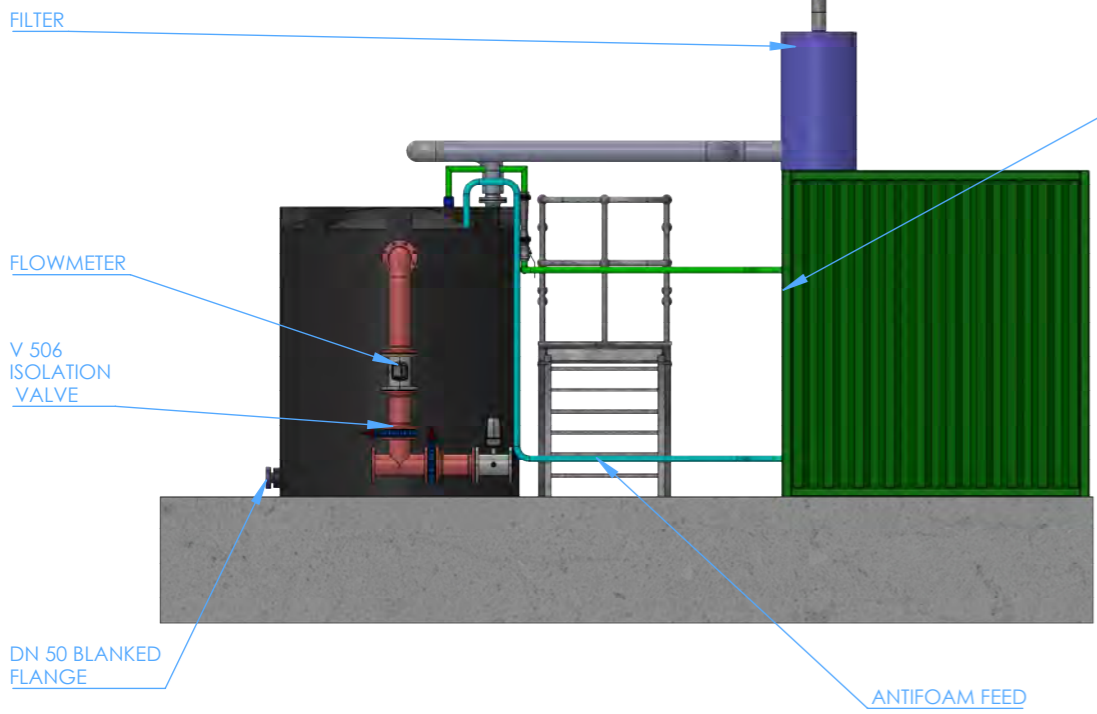
ELEVATION

CONTAINERISED PLANT ROOM

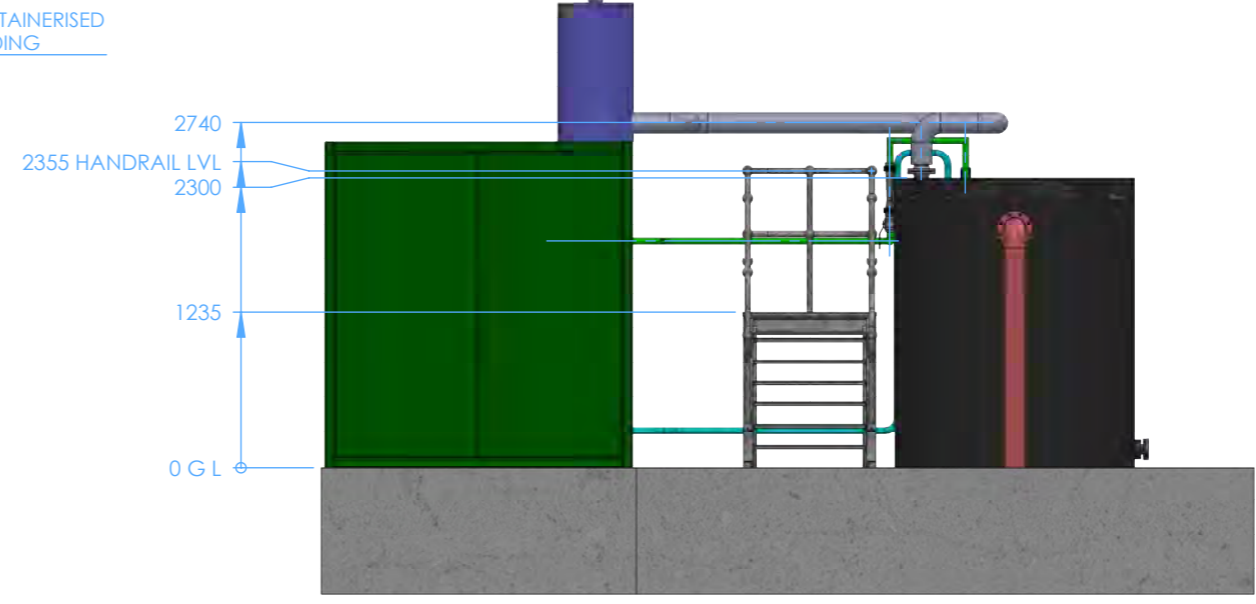
END VIEW 2

END VIEW 1

10 9 8 7 6 5 4 3 2 1



END VIEW 1



END VIEW 2



ELEVATION

This drawing is the property of Colloide Engineering Systems and must not be copied or used for any purpose other than that for which it is supplied without the written consent of Colloide Engineering Systems Ltd.

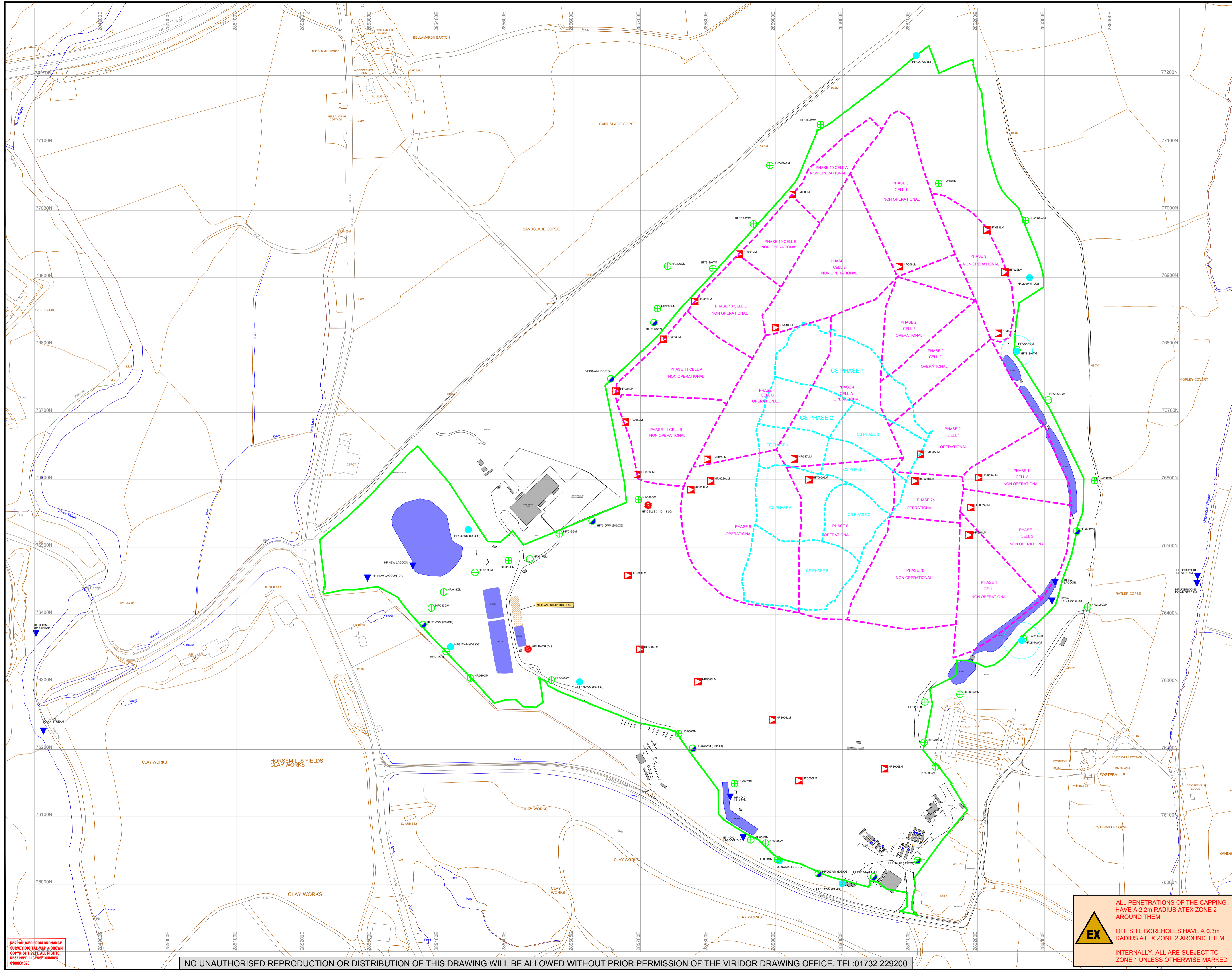
- NOTES :
- DO NOT SCALE
 - ALL DIMENSIONS IN mm
 - ALL SS TO PASSIVATED AND PICKLED

REV.	DESCRIPTION	DRN' BY	CHKD BY	APP'D BY	DATE
C	UPDATED POST HAZOP	BL	MMK	PMG	01/05/2019
B	FOR REVIEW	BL	MMK	PMG	27/03/2019
A	FOR TENDER	BL	MMK	PMG	27/07/2018

REVISIONS			
Originated	Drawn	Checked	Approved
BL	BL	MMK	PMG
Date 19.01.18	Date 19.01.18	Date 19.01.18	Date 19.01.18
Scale 1:60	Status FOR APPROVAL		

<p>Colloide Engineering Systems Ltd COLLOIDE ENGINEERING SYSTEMS LTD COORSTOWN ENTERPRISE CENTRE DERRYLORAN INDUSTRIAL ESTATE COORSTOWN CO. TYRONE TEL: 098 967 586 38 WWW.COLLOIDE.COM</p>	
<p>Project Title Heathfield Landfill Site Methane Stripping Plant</p>	
<p>Drawing Title General Arrangement Sheet 3</p>	
<p>Client Drawing No. 18291-302</p>	<p>REV C</p>
<p>CES Drawing No. 18291-302</p>	<p>SCALE A3</p>

10 9 8 7 6 5 4 3 2 1



- LEACHATE MONITORING POINT
- LEACHATE SUMP
- PERIMETER GAS MONITORING POINT
- DUAL GAS / GROUND WATER MONITORING POINT
- GROUND WATER MONITORING POINT
- SURFACE WATER MONITORING POINT
- AIR EMISSIONS MONITORING POINT
- DEPOSITIONAL DUST GAUGE
- AIR QUALITY MONITORING POINT
- F.I.D MONITORING POINT
- EFFLUENT MONITORING POINT

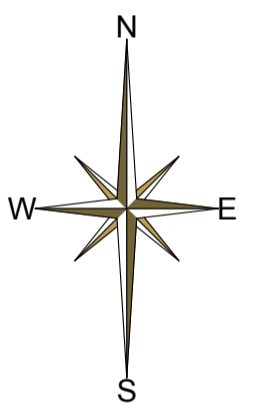
(UG) UP GRADIENT
 (DG) DOWN GRADIENT
 (CG) CROSS GRADIENT

(US) UP STREAM
 (DS) DOWN STREAM
 → DIRECTION OF FLOW

--- AS BUILT CELL BASAL AREA
 --- ENVIRONMENTAL PERMIT BOUNDARY

--- PROPOSED CAP STRIP AREA

CURRENT TIPPING AREA
 CS PHASE 1
 CS PHASE 2



**TO BE READ IN CONJUNCTION WITH MEPP TABLES
 FOR IN WASTE GAS MONITORING WELLS SEE
 SEE THE SITE 4000 STANDARD PLAN**

viridor.co.uk | viridorTV | viridorUK | viridor | U.K.A.S. | U.K.A.S. REGISTERED

1st Floor Riverside House, Sir Thomas Longley Road, Medway City Estate, Rochester, Kent, ME2 4PN. Tel: 01732 229200 Fax: 01732 229280

SITE NAME
HEATHFIELD LANDFILL

DRAWING TITLE
MONITORING AND EXTRACTON POINT PLAN
 PAGE 1 OF 3

SCALE 1:2500
 O/DATE APR 2015
 O/DRN MG
 O/APP SR

REVISION	C	TASK 12787
DRN	MG	APP
		DATE

FOR REVISION INFORMATION, SEE D.O. REGISTER
 DRAWING BASED UPON:

EX

ALL PENETRATIONS OF THE CAPPING HAVE A 2.2m RADIUS ATEX ZONE 2 AROUND THEM

OFF SITE BOREHOLES HAVE A 0.3m RADIUS ATEX ZONE 2 AROUND THEM

INTERNALLY, ALL ARE SUBJECT TO ZONE 1 UNLESS OTHERWISE MARKED

REPRODUCED FROM ORDNANCE SURVEY DIGITAL MAP © CROWN COPYRIGHT 2011. ALL RIGHTS RESERVED. LICENSE NUMBER 910051673

NO UNAUTHORISED REPRODUCTION OR DISTRIBUTION OF THIS DRAWING WILL BE ALLOWED WITHOUT PRIOR PERMISSION OF THE VIRIDOR DRAWING OFFICE. TEL:01732 229200

PRELIMINARY



Heathfield MEPP Tables

Proposed Tables for Permit Variation 012 (September 2019)

Permit Schedule 3, Revised Table S3.1

Table S3.1 Leachate level limits and monitoring requirements				
Monitoring Point Ref/Description As shown on Plan HEA3000	Limit	Monitoring frequency	Monitoring standard or method	
Operational Cells or Phases ¹				
HF/004ALM, HF/005ALM, HF/012ALM, HF/017LM, HF/021LM, HF/022ALM, HF/025BLM.	2 metres above cell base	Monthly	In accordance with LFTGN02, or otherwise as agreed with the Agency in writing	
Non Operational Cells or Phases ²				
HF/001LM, HF/002ALM, HF/003ALM, HF/008LM, HF/010LM, HF/027LM, HF/028LM, HF/029LM, HF/030LM, HF/031LM, HF/032LM, HF/033LM HF/035LM, HF/036LM	2 metres above cell base	Quarterly		
HF/034LM	2.5 metres above cell base			
HFS001LM, HFS002LM, HFS003LM, HFS004LM, HFS005LM, HFS006LM	5 metres above cell base			

¹ Any cells or phases that do not have a final engineered cap agreed in accordance with the existing 'landfill engineering' condition 2.4
² Any cells or phases that have a final engineered cap agreed in accordance with the existing 'landfill engineering' condition 2.4

Permit Schedule 3, Revised Table S3.10

Table S3.10 Leachate – other monitoring requirements				
Monitoring Point Ref/Description	Parameter	Monitoring frequency	Monitoring standard or method	Other specifications
Operational Cells or Phases ¹				
HF/004ALM, HF/005ALM, HF/012ALM, HF/017LM, HF/021LM, HF/022ALM, HF/025BLM.	pH, EC, total alkalinity, ammoniacal nitrogen, chloride, COD, BOD, cadmium, chromium, copper, lead, nickel, iron, arsenic, magnesium, potassium, total sulphates, calcium, sodium, zinc, manganese	Quarterly	As specified in Environment Agency TGN02 (February 2003) and Horizontal Guidance Note H1 – Environmental Risk Assessment for permits, Annex J3, version 2.1, December 2011 with one sampling point per cell / phase or such other subsequent guidance as may be agreed in writing with the Environment Agency.	None
	Hazardous substances	Annually		
	Depth to base (mAOD)	Annually		
Non Operational Cells or Phases ²				
HF/001LM, HF/008LM, HF/010LM, HF/027LM, HF Cells 3, 10, 11 LQ, HFS001LM, HFS005LM.	pH, EC, total alkalinity, ammoniacal nitrogen, chloride, COD, BOD, cadmium, chromium, copper, lead, nickel, iron, arsenic, magnesium, potassium, total sulphates, calcium, sodium, zinc, manganese	Annually	As specified in Environment Agency TGN02 (February 2003) and Horizontal Guidance Note H1 – Environmental Risk Assessment for permits, Annex J3, version 2.1, December 2011 with one sampling point per cell / phase or such other subsequent guidance as may be agreed in writing with the Environment Agency.	None
	Hazardous substances	Once every four years		
	Depth to base (mAOD)	Annually		

¹ Any cells or phases that do not have a final engineered cap agreed in accordance with the existing 'landfill engineering' condition 2.4
² Any cells or phases that have a final engineered cap agreed in accordance with the existing 'landfill engineering' condition 2.4

Permit Schedule 3, Revised Table S3.8

Table S3.8 Groundwater – other monitoring requirements			
Monitoring Point Ref /Description	Parameter	Monitoring frequency	Monitoring standard or method
<i>Up gradient</i> HF/220WM, HF/222WM	Water level, electrical conductivity, chloride, ammoniacal nitrogen, pH	Quarterly	As specified in Environment Agency TGN02 'Monitoring of Landfill Leachate, Groundwater and Surface Water' (February 2003), Horizontal Guidance Note H1 – Environmental Risk Assessment for permits, Annex J3, version 2.1, December 2011, or such other subsequent guidance as may be agreed in writing with the Environment Agency.
	Total alkalinity, magnesium, potassium, total sulphates, calcium, sodium, chromium, copper, iron, lead, nickel, zinc, manganese	Annually	
	Hazardous substances	Annually for first six years of operation	
<i>Down or cross gradient</i> HF/001WM, HF/003WMA, HF/012WM, HF/019WM, HF/025WMA, HF/026WM, HF/032WM, HF/033WM, HF/203AWM, HF/214AWM, HF/215AWM, HF/218AWM, HF/002GM, HF/037GM, HF/310WM, HF/311WM	Water level, electrical conductivity, chloride, ammoniacal nitrogen, pH	Quarterly	As specified in Environment Agency TGN02 'Monitoring of Landfill Leachate, Groundwater and Surface Water' (February 2003), Horizontal Guidance Note H1 – Environmental Risk Assessment for permits, Annex J3, version 2.1, December 2011, or such other subsequent guidance as may be agreed in writing with the Environment Agency.
	Total alkalinity, magnesium, potassium, total sulphates, calcium, sodium, chromium, copper, iron, lead, nickel, zinc, manganese	Annually	
	Hazardous substances detected in leachate	Annually for first six years of operation then every two years	
<i>Groundwater monitoring points</i>			
HF/220WM, HF/222WM, HF/001WM, HF/003WMA, HF/012WM, HF/019WM, HF/025WMA, HF/026WM, HF/032WM, HF/033WM, HF/203AWM, HF/214AWM, HF/215AWM, HF/218AWM, HF/002GM, HF/037GM, HF/310WM, HF/311WM	Base of monitoring point (mAOD)	Annually	After initial six year monitoring period for hazardous substances, if the results of quarterly or annual monitoring suggest an increase in contamination, the operator shall also undertake a full leachate hazardous substances screen.

- LEACHATE MONITORING POINT
 - LEACHATE SUMP
 - PERIMETER GAS MONITORING POINT
 - DUAL GAS / GROUND WATER MONITORING
 - GROUND WATER MONITORING POINT
 - SURFACE WATER MONITORING POINT
 - AIR EMISSIONS MONITORING POINT
 - DEPOSITIONAL DUST GAUGE
 - AIR QUALITY MONITORING POINT
 - F.I.D MONITORING POINT
 - EFFLUENT MONITORING POINT
- (UG) UP GRADIENT
 (DG) DOWN GRADIENT
 (CG) CROSS GRADIENT
- (US) UP STREAM
 (DS) DOWN STREAM
 → DIRECTION OF FLOW
- AS BUILT CELL BASAL AREA
 --- ENVIRONMENTAL PERMIT BOUNDARY

TO BE READ INCONJUNCTION WITH MEPP TABLES
 FOR IN WASTE GAS MONITORING WELLS SEE THE SITE 4000 STANDARD PLAN

viridor.co.uk viridorTV
 viridorUK viridor

1st Floor Riverside House, St Thomas Longley Road, Medway City Estate, Rochester, Kent, ME2 6RN
 Tel: 01732 229200 Fax: 01732 229280

SITE NAME
HEATHFIELD LANDFILL

DRAWING TITLE
MONITORING AND EXTRACTION POINT PLAN - PAGE 2 OF 3

SCALE	NTS
OIDATE	APR 2015
OIDRNI	MG
OIAPP	SR
REVISION	C TASK 12787
DRN	MG APP DATE
FOR REVISION INFORMATION, SEE D.O. REGISTER	
DRAWING BASED UPON	

EX

ALL PENETRATIONS OF THE CAPPING HAVE A 2.2m RADIUS ATEX ZONE 2 AROUND THEM

OFF SITE BOREHOLES HAVE A 0.3m RADIUS ATEX ZONE 2 AROUND THEM

INTERNALLY, ALL ARE SUBJECT TO ZONE 1 UNLESS OTHERWISE MARKED



Permit Schedule 3, Revised Table S3.4

Table S3.4 Groundwater – emission limits and monitoring requirements					
Monitoring Point Ref	Parameter	Limit (including unit)	Reference Period	Monitoring frequency	Monitoring standard or method
HF/019WM, HF/033WM, HF/310WM, HF/002GM, HF/003WMA, HF/026WM, HF/032WM, HF/219AWM	Ammoniacal nitrogen	6.3 mg/l	Spot sample	Quarterly	As specified in Environment Agency Guidance TGN02 'Monitoring of Landfill Leachate, Groundwater and Surface Water' (February 2003), Horizontal Guidance Note H1 – Environmental Risk Assessment for permits, Annex J3, version 2.1 December 2011 or such other subsequent guidance as may be agreed in writing with the Environment Agency.
	Chloride	250 mg/l			
	Cadmium	0.001 mg/l			
	Toluene	0.004 mg/l			
HF/001WM	Chloride	250 mg/l	Spot sample	Quarterly	
	Cadmium	0.001 mg/l			
	Toluene	0.004 mg/l			

Permit Schedule 3, Revised Table S3.3

Table S3.3 Point source emissions to water (other than sewer) – emissions limits and monitoring requirements						
Monitoring Point Ref & location	Parameter	Source	Limit (incl unit)	Reference Period	Monitoring Frequency	Monitoring Standard or Method
Discharge at NGR SX 8528 7642 (HF New Lagoon Dis)	Volume	New lagoon	2,600 m ³ /day	Spot sample	Monthly	As specified in Environment Agency TGN02 (February 2003) or such other subsequent guidance as may be agreed in writing with the Environment Agency. Or as otherwise agreed with the Agency as part of a leachate management plan.
	pH		>6 to <9			
Discharge at NGR SX 8585 7604 (HF No Lagoon 1 Dis)	Volume	Lagoon No 1	500 m ³ /day	Spot sample	Monthly	
	pH		>6 to <9			
Discharge at NGR SX 8631 7644 (HF SW Lagoon 1 Dis)	Ammoniacal nitrogen	Eastern Lagoon	0.5 mg/l	Spot sample	Monthly	
	pH		>6 to <9			

Permit Schedule 3, Revised Table S3.11

Table S3.11 Surface water – other monitoring requirements				
Monitoring Point Ref /Description	Parameter	Monitoring Frequency	Monitoring Standard or Method	Other specifications
HF New Lagoon, HF No.1 Lagoon, HF SW Lagoon 1, HF Teign Upstream, HF Teign Downstream, HF Ugbrooke Upstream, HF Ugbrooke Downstream	Ammoniacal nitrogen Chloride Suspended solids Visual Oil and Grease pH Electrical conductivity	Monthly	Spot sample	As specified in Environment Agency Guidance TGN02 'Monitoring of Landfill Leachate, Groundwater and Surface Water' (February 2003), Horizontal Guidance Note H1 – Environmental Risk Assessment for permits, Annex J3, version 2.1 December 2011 or such other subsequent guidance as may be agreed in writing with the Environment Agency.

Permit Schedule 3, Table S3.5

Table S3.5 Landfill gas in external monitoring boreholes – limits and monitoring requirements				
Monitoring Point Ref /Description	Parameter	Limit (including units)	Monitoring Frequency	Monitoring Standard or Method
HF/002GM, HF/003GM, HF/004GM, HF/008GM, HF/009GM, HF/010GM, HF/011GM, HF/012GM, HF/013GM, HF/014AGM, HF/015AGM, HF/016GM, HF/017GM, HF/018GM, HF/019GM, HF/020GM, HF/022AGM, HF/023GM, HF/024GM, HF/025GM, HF/026GM, HF/027GM, HF/029GM, HF/037GM, HF/201AGM, HF/202GM, HF/203AGM, HF/204AGM, HF/205AGM, HF/206AGM, HF/209AGM, HF/211AGM, HF/212AGM, HF/214GM, HF/215AGM, HF/216AGM, HF/223AGM, HF/224GM and HF/309GM	Methane	1 % v/v	Monthly	As per LFTGN03 (Sept 2004) or such other subsequent guidance as may be agreed in writing with the Environment Agency.
HF/001GM, HF/002GM, HF/003GM, HF/004GM, HF/008GM, HF/009GM, HF/010GM, HF/011GM, HF/012GM, HF/013GM, HF/014AGM, HF/015AGM, HF/016GM, HF/017GM, HF/018GM, HF/019GM, HF/020GM, HF/022AGM, HF/023GM, HF/026GM, HF/027GM, HF/029GM, HF/037GM, HF/201AGM, HF/202GM, HF/203AGM, HF/204AGM, HF/205AGM, HF/206AGM, HF/209AGM, HF/211AGM, HF/212AGM, HF/214GM, HF/215AGM, HF/216AGM, HF/223AGM, HF/224GM and HF/309GM	Oxygen Atmospheric Pressure Differential Pressure Carbon Dioxide	No Limit	Monthly	Record whether the ground is: - Waterlogged, - Frozen or - Snow covered.

- LEACHATE MONITORING POINT
- LEACHATE SUMP
- PERIMETER GAS MONITORING POINT
- DUAL GAS / GROUND WATER MONITORING
- GROUND WATER MONITORING POINT
- SURFACE WATER MONITORING POINT
- AIR EMISSIONS MONITORING POINT
- DEPOSITIONAL DUST GAUGE
- AIR QUALITY MONITORING POINT
- F.I.D MONITORING POINT
- EFFLUENT MONITORING POINT

- (UG) UP GRADIENT
- (DG) DOWN GRADIENT
- (CG) CROSS GRADIENT

- (US) UP STREAM
- (DS) DOWN STREAM
- DIRECTION OF FLOW

- AS BUILT CELL BASAL AREA
- ENVIRONMENTAL PERMIT BOUNDARY

TO BE READ INCONJUNCTION WITH MEPP TABLES
FOR IN WASTE GAS MONITORING WELLS SEE
SEE THE SITE 4000 STANDARD PLAN



1st Floor Riverside House, St Thomas Longley Road, Medway City Estate, Rochester, Kent, ME2 4JN
Tel: 01732 229200 Fax: 01732 229280

SITE NAME
HEATHFIELD LANDFILL

DRAWING TITLE
MONITORING AND EXTRACTION POINT PLAN - PAGE 2 OF 3

SCALE	NTS
OIDATE	APR 2015
OIDRN	MG
OIAPP	SR
REVISION	C TASK 12787
DRN	MG APP DATE
FOR REVISION INFORMATION, SEE D.O. REGISTER	
DRAWING BASED UPON	

EX
ALL PENETRATIONS OF THE CAPPING HAVE A 2.2m RADIUS ATEX ZONE 2 AROUND THEM
OFF SITE BOREHOLES HAVE A 0.3m RADIUS ATEX ZONE 2 AROUND THEM
INTERNALLY, ALL ARE SUBJECT TO ZONE 1 UNLESS OTHERWISE MARKED