



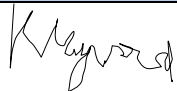



Environmental Risk Assessment

Inert Storage Facility Towens of Weston Ltd

Towens Kleen Kutt Yard
Land off Springway Lane,
Westonzoyland,
TA7 0JS

Document Title	Environmental Risk Assessment
Revision	2.0
Date	19/06/2023
Document Reference	Towens Kleen Kutt ERA 19-6-23
Prepared For	Towens of Weston Ltd
Authored By	MTS Environmental Ltd

Quality Control

Revision No.	Date Revised	Amendments	Authored By	Sign Off	Approved By	Sign Off
1.0	31/01/23	Original Draft for permit application	Kasia Haywood		Luke Bridges	
2.0	19/06/23	Amendments based on duly making information request	Kasia Haywood		Luke Bridges	

DISCLAIMER: This document was prepared by MTS Environmental Ltd solely on behalf of the Client (Towens of Weston Ltd). MTS accepts no responsibility or liability for any use that is made of this document other than the purpose for which it was originally commissioned and prepared.

This document may contain information of a specialised and/or highly technical nature and the Client is advised to seek clarification on any elements which may be unclear to it. Information, advice, recommendations and opinions in this document should only be relied upon in the context of the whole document and any documents referenced explicitly herein and should then only be used within the context of the appointment.

Information reported herein may be based on the interpretation of public domain data collected by MTS and/or information provided by the Client. These data have been accepted in good faith as being accurate and valid

Contents

1. INTRODUCTION	4
2. Environmental Risk Assessment	4
2.1. Methodology	4
2.2. Potential Hazards.....	4
2.3. Pathways.....	5
2.4. Receptors.....	5
2.4. Risk Assessment.....	6
3. Summary.....	6

1. Introduction

Towens of Weston Ltd is applying for a new bespoke environmental permit (permit number: TBC) for its Westonzoyland inert storage depot site at Land off Springway Lane, Westonzoyland, TA7 0JS. The permit is for a physical treatment of non-hazardous waste site (Activity 1.16.12). The main activities on site will consist of soils and aggregate storage and treatment through screening to be used in recovery CL:AIRE projects. The site will be used as a CL:AIRE Hub site.

This Environmental Risk Assessment (ERA) is limited to a qualitative assessment of the potential risks to the environment and human health specifically related to the activities, including the proposed activities, undertaken at the Towens of Weston Ltd Westonzoyland site. This report will identify any significant risks and detail the measures that Towens of Weston Ltd will adopt to appropriately manage any risk of pollution.

2. Environmental Risk Assessment

2.1. Methodology

This report has been prepared following the Environment Agency's Risk Assessment guidance. It specifically relates to the potential risks associated with odour; noise and vibration; fugitive emissions and accidents and incidents.

This risk assessment addresses the above risks and is based on the following methodology:

- Identification of potential risks
- Identification of all potential receptors to these risks
- An assessment of each risk type.

The environmental risk assessment (Appendix A) assesses the risks to the environment and human health from activities carried out at the Towens of Weston Ltd Westonzoyland depot and identifies the pollutant linkage i.e. source – pathway – receptor for each risk type.

2.2. Potential Hazards

The potential hazards resulting from the activities carried out at the Towens of Weston Ltd Westonzoyland depot have been considered, as provided in Appendix A, and are summarised below:

- Odour:
 - Waste materials
- Noise and vibration:
 - Engine noise from vehicles
 - Use of reverse vehicle warnings
 - Use of plant and machinery
- Fugitive emissions:
 - Particulate matter i.e. dust
 - Scavenging birds, pests, and vermin
 - Mud and litter
- Accidents:
 - Fire

- Leaks and spillages
- Flooding
- Unauthorised access

2.3. Pathways

The pathways identified for each risk type are shown in Table 1:

Table 1: Potential Pathways

Risk Type	Pathway
Odour	Air
Noise and vibration	Air
Fugitive emissions	Air
Accidents	Air
	Surface water run-off
	Infiltration
	Percolation

2.4. Receptors

Receptors within 1000m of the application site have been identified and are shown in Table 2 below, with high sensitivity receptors highlighted in bold, and in the Sensitive Receptor Plan (Appendix B). The main pathway for the identified sources is the air and as such, atmospheric conditions can affect dispersion rates and the potential risk. Therefore, the location of each receptor in relation to the site may influence the potential impact of the risk, as summarised in Table 2.

Table 2: Location of potential receptors in relation to waste operations

Receptor	Distance from site (m)	Direction
Residential		
Caravan Park	160m	West
Springway Farm	550m	North West
Property on Knowleyards Road	860m	South East
The Old Ambulance House	755m	East
Designated Land and Waterways		
Site of Special Scientific Interest (SSSI) – Langmead and Weston Level	60m and 350m	South and West
Priority Habitat Inventory (PHI) – Lowland Meadows	155m	South
PHI – Lowland Dry Acid Grassland	635m	South East
PHI – Coastal and Floodplain Grazing Marsh	60m	South and West
PHI – Deciduous Woodland	535m	East
PHI – Traditional Orchards	1000m	South East
Important Plant Areas Plantlife (GB)	60m	South and West
Somerset Levels and Moors	0m	All directions
Pigditch Rhyne Network	60m	South and West
Sensitive Land Uses		
Middlezoy Aerodrome	230m	East
Farm	545m	North West
Westonzoyland Allotments	1000m	North West
Westonzoyland Airfield	700m	North West

Sedgemoor RC Flying Club	950m	North East
Industrial/Commercial		
JWF Engineering	250m	East
Kleen Kutt	70m	East
Bridgwater Motorcycle Training	930m	North West
Grandfields Westonzoyland Motor Track and Learner Driver Area	600m	East
T&K Motorcycle Training	800m	East
Burnham Coal Supplies	345m	North West
Regency	320m	North West
Slabs R Us	400m	North West
Seven Acres Industrial Estate	970m	East
Towens Westonzoyland Depot	280m	West
Public Rights of Way		
Restricted Byway	60m	South
Public Footpath	430m	South
Infrastructure/utilities		
A372	470m	North
Protected species		
Priority Species - Curlew	620m	West
Priority Species - Lapwing	0m	All directions
Priority Species - Redshank	135m	North and West
Protected Species-European Water Vole	Up to 500m	All directions
Badger Sett	60m	South West
Groundwater		
The site is not within a source protection zone or drinking water safeguard zone		

2.4. Risk Assessment

The Environmental Risk Assessment (Appendix A) looks at each specific hazard identified and assesses the likelihood of those hazards impacting on nearby receptors. This is achieved by fulfilling the following objectives:

- Identify the location and nature of each hazard
- Identify the specific receptors potentially at risk and assess the sensitivity of each receptor
- Provide an assessment of the risk posed to each sensitive receptor
- Identify management and monitoring techniques to remove or mitigate the risk
- Provide recommendations for more detailed assessments where necessary.

3. Summary

The Environmental Risk Assessment indicates that if the appropriate outlined management techniques are implemented at the site to protect nearby sensitive receptors, the proposed activities as part of the permit variation will have no significant impacts in terms of odour, noise and fugitive emissions, and the likelihood of accidents is minimal.

Appendix A – Environmental Risk Assessment

Table A1: Odour Risk Assessment and Management Plan

What is the risk?			Managing the risk	Assessing the risk		
Hazard	Receptor	Pathway	Risk Management	Probability of Exposure	Consequence	What is the overall risk?
Odorous Waste Types	Local population in residential dwellings and businesses listed in Table 2 SSSI Priority and Protected Species Site Staff	Air transport then inhalation	<p>Permitted waste types stored onsite are not putrescible and so have a low odour potential. No hazardous wastes are accepted on site.</p> <p>There will be strict waste acceptance procedures in place to minimise the risk of non-compliant wastes being accepted. Details of the waste acceptance procedures are provided in the Environmental Management System (EMS).</p> <p>All loads will be inspected upon arrival and refused if offensively odorous.</p> <p>Any odorous wastes will be transferred to the quarantine area and removed from site within 7 days.</p> <p>All site operatives will be vigilant regarding identifying non-compliant wastes and any non-conformances or odour issues will be reported to the Site Manager.</p>	Very unlikely as the waste types accepted on site do not give off odour unless heated and the material will be stored at ambient temperature	Odour annoyance and complaints	Low

Table A2: Noise and Vibration Risk Assessment and Management Plan

What is the risk?			Managing the risk	Assessing the risk		
Hazard	Receptor	Pathway	Risk Management	Probability of Exposure	Consequence	What is the overall risk?
Noise and vibrations from loading and unloading of waste	Local population in residential dwellings, and businesses listed in Table 2 SSSI and priority habitats Priority and protected species Site Staff	Air and vibration	<p>All noise generating activities will be undertaken between the hours of 07:00 to 17:00 Monday to Friday and 07:00 to 13:00 on Saturday, except for emergency repairs.</p> <p>All plant and machinery will have effective silencers where practicable and be maintained in accordance with the manufacturer's requirements to minimise the risk of mechanical failure which could result in increased noise emissions.</p> <p>The loading/unloading of wastes will be undertaken in a controlled manner to keep noise/vibration to a minimum. Vehicles will be directed by site operatives to minimise the drop height when depositing loads at the site.</p> <p>All noise and vibration generating activity will be monitored closely and site operatives will be vigilant and report any excessive noise or vibration issues to the Site Manager.</p> <p>The site boundary has a fence and planting to reduce potential noise levels and contain noise within the site boundary.</p>	<p>Intermittent noise disturbance</p> <p>The site is surrounded by other industrial noise generating sites so it is unlikely the site operations will create excess noise above the existing</p>	Noise annoyance and complaints	Low
Vehicle movements on site	Local population in residential dwellings, and businesses listed in Table 2 SSSI and	Air	<p>Loads will only be delivered to the site during working hours (07:00 to 17:00 Monday to Friday and 07:00 to 13:00 on Saturday).</p> <p>The delivery of waste will take place in a controlled manner by limiting drop heights to keep noise to a minimum.</p> <p>Designated one-way haul road for vehicles on site to avoid contact with materials.</p>	<p>Intermittent during operating hours</p> <p>The site is surrounded by other industrial noise generating sites so it is unlikely the site operations</p>	Intermittent noise and vibration disturbance	Low

	<p>priority habitats</p> <p>Priority and protected species</p> <p>Site Staff</p>		<p>Speed limit of 5 mph on site.</p> <p>The site boundary has a southern and eastern fence to reduce potential noise levels and contain noise within the site boundary.</p> <p>All plant and machinery will have effective silencers where practicable and be maintained in accordance with the manufacturer's requirements to minimise the risk of mechanical failure which could result in increased noise emissions.</p> <p>An anti-idling policy ensures that all equipment and vehicles when not in regular use shall be switched off. The Site Manager will be responsible for ensuring the above measures are implemented.</p> <p>Anti-beeping policy in place on site to prevent unnecessary vehicle noise.</p> <p>All noise generated by vehicle movements will be monitored closely and site operatives will be vigilant and report any excessive noise or vibration issues to the Site Manager.</p>	<p>will create excess noise above the existing</p>		
<p>Use of plant and machinery.</p>	<p>Local population in residential dwellings, and businesses listed in Table 2</p> <p>SSSI and priority habitats</p> <p>Priority and protected species</p> <p>Site Staff</p>	<p>Air</p>	<p>All noise generating activities will take place during working hours (07:00 to 17:00 Monday to Friday and 07:00 to 13:00 on Saturday), except for emergency repairs.</p> <p>All plant and machinery will have effective silencers where practicable and be maintained in accordance with the manufacturer's requirements. Only screeners are intended to be used on site which do not ordinarily create significant adverse noise impacts.</p> <p>All equipment and vehicles, when not in regular use, shall be switched off. The Site Manager will be responsible for ensuring the above measures are implemented.</p> <p>Processing activities will be done on a campaign basis to avoid continuous on/off use and noise nuisance. The site is a temporary site for CL:AIRE projects so will not cause continued noise impacts.</p>	<p>Intermittent during operating hours</p> <p>The site is surrounded by other industrial noise generating sites so it is unlikely the site operations will create excess noise above the existing</p>	<p>Intermittent noise and vibration disturbance.</p>	<p>Low</p>

			<p>Minimal plant and machinery is on site, consisting only of a screener, telehandler, crusher (on a campaign basis), grab and mobile water bowser.</p> <p>Locations have been considered to minimise noise production: all processing is done within the fenced site area.</p> <p>The site boundary has planted and vegetated areas to reduce potential noise levels and contain noise within the site boundary.</p> <p>All noise generating activity will be monitored closely and site operatives will be vigilant and report any excessive noise or vibration issues to the Site Manager.</p> <p>Noise to be managed in accordance with the Part B permits of the crusher and screener.</p>			
Noise from reversing vehicle warnings.	<p>Local population in residential dwellings, and businesses listed in Table 2</p> <p>SSSI and priority habitats</p> <p>Priority and protected species</p> <p>Site Staff</p>	Air	<p>All noise generating activities will take place during working hours (07:00 to 17:00 Monday to Friday and 07:00 to 13:00 on Saturday) except for emergency repairs.</p> <p>All noise and vibration generating activity will be monitored closely and site operatives will be vigilant and report any excessive noise or vibration issues to the Site Manager.</p> <p>Designated one-way haul road for vehicles on site to minimise the need for reversing except when tipping into the tipping area or collecting materials.</p> <p>The site boundary has planting and a fence to reduce potential noise levels and contain noise within the site boundary.</p>	Intermittent during operating hours.	Intermittent noise disturbance	Low
Noise from processing of waste materials (crushing and	<p>Local population in residential dwellings, and businesses listed in Table 2</p> <p>SSSI and</p>	Air	<p>All noise generating activities will take place during working hours (07:00 to 17:00 Monday to Friday and 07:00 to 13:00 on Saturday) except for emergency repairs.</p> <p>Processing activities will not generate levels of noise above that originating from the surrounding roads and industrial sites.</p>	Intermittent during operating hours	Intermittent noise disturbance	Low

<p>screening)</p>	<p>priority habitats</p> <p>Priority and protected species</p> <p>Site Staff</p>	<p>All plant and machinery will have effective silencers where practicable and be maintained in accordance with the manufacturer’s requirements to minimise the generation of noise.</p> <p>All plant and equipment will be switched off when not in regular use.</p> <p>Processing activities will be done on a campaign basis to avoid continuous on/off use and noise nuisance. The site is a temporary site for CL:AIRE projects so will not cause continued noise impacts.</p> <p>Minimal plant and machinery is on site, consisting only of a wash plant, telehandler, excavator, crusher (on a campaign basis), grab and mobile water bowser.</p> <p>Locations have been considered to minimise noise production: all activities are contained within the perimeter fence and planting.</p> <p>All noise and vibration generating activity will be monitored closely and site operatives will be vigilant and report any excessive noise or vibration issues to the Site Manager.</p> <p>Noise to be managed in accordance with the Part B permits of the crusher and screener.</p>			
-------------------	----------------------------------------------------------------------------------	--------------------------------------------------------------------------------------------------------------------------------------------------------------------------------------------------------------------------------------------------------------------------------------------------------------------------------------------------------------------------------------------------------------------------------------------------------------------------------------------------------------------------------------------------------------------------------------------------------------------------------------------------------------------------------------------------------------------------------------------------------------------------------------------------------------------------------------------------------------------------------------------------------------------------------------------------------------------------------------------------------------------------------------------------------------------------------------------	--	--	--

Table A3: Fugitive emissions risk assessment and management plan

What is the risk?			Managing the risk	Assessing the risk		
Hazard	Receptor	Pathway	Risk Management	Probability of Exposure	Consequence	What is the overall risk?
To Air						
Dust emissions from vehicle movements	Local population in residential dwellings, sensitive land uses, and businesses listed in Table 2 Site Staff Users of roads - A372 SSSI and priority habitats Priority and protected species	Air transport then deposition	<p>Wastes being delivered to the site will be covered or sheeted to prevent the generation of dust while the waste is in transit.</p> <p>Vehicle speeds will be limited onsite and the access road to 5mph to prevent re-suspension and movement of dust.</p> <p>All equipment and vehicles when not in regular use shall be switched off to minimise the risk of dust emissions that may arise from idling.</p> <p>Designated one-way haul road for vehicles on site to avoid contact with materials.</p> <p>The implementation of dust suppression systems including the use of spray on crushing plant, mobile water bowser for damping down, and regular maintenance of haul roads and site surface with water bowser and road sweeper.</p> <p>The site perimeter is surrounded by a planting and a fence which will act as a screen for dust so no dust escapes from the site boundary.</p> <p>Dust will be managed in accordance with the Dust Management Plan prepared for the site.</p> <p>The Site Manager undertakes a daily visual assessment of dust levels and all site operatives will be vigilant and report any problems to the Site Manager.</p>	Unlikely due to measures in place and the nature of materials accepted on site	Local nuisance i.e. dust on cars, clothing, and vegetation. Nutrient enrichment.	Low

<p>Dust emissions generated during unloading of waste from HGVs.</p>	<p>Local population in residential dwellings, sensitive land uses, and businesses listed in Table 2</p> <p>Site staff</p> <p>Users of roads - A372</p> <p>SSSI and priority habitats</p> <p>Priority and protected species</p>	<p>Air transport then deposition</p>	<p>A water bowser will be used to dampen site haul roads, site surface and stockpiles if necessary.</p> <p>The loading/unloading of wastes will be undertaken in a controlled manner by limiting drop heights to keep dust emissions to a minimum.</p> <p>Wastes will be stored in height limited stockpiles to prevent wind whipping.</p> <p>Designated one-way haul roads and paths for HGVs to avoid contact with waste.</p> <p>Drop heights will be minimised to reduce the generation of dust whilst the waste is being handled.</p> <p>The site is enclosed within planting and a fence surrounding the site perimeter will act as a screen for dust so no dust escapes from the site boundary.</p> <p>Dust will be managed in accordance with the Dust Management Plan prepared for the site.</p> <p>The Site Manager will undertake a daily visual assessment of dust levels and all site operatives will be vigilant and report any problems to the Site Manager.</p> <p>Operations will temporarily cease when winds are likely to generate dust emissions from wastes and materials.</p>	<p>Dust could potentially reach nearby properties when a strong wind blows in their direction. Management actions should prevent this happening.</p> <p>Minimal processing activities undertaken on site</p>	<p>Local nuisance i.e. dust on cars, clothing, and vegetation.</p> <p>Nutrient enrichment.</p>	<p>Low</p>
<p>Dust from haul road</p>	<p>Local population in residential dwellings, sensitive land uses, and businesses listed in Table 2</p>	<p>Air transport then deposition</p>	<p>The use of modern plant and regular maintenance shall be practiced to reduce emissions.</p> <p>The implementation of dust suppression systems including the use of spray on crushing plant, mobile water bowser for damping down, and regular maintenance of haul roads and site surface with water bowser and road sweeper.</p>	<p>Unlikely due to measures in place</p>	<p>Local nuisance i.e. dust on cars, clothing, and vegetation.</p>	<p>Low</p>

	<p>Site staff</p> <p>Users of roads - A372</p> <p>SSSI and priority habitats</p> <p>Priority and protected species</p>		<p>The haul road on the site will be wetted down daily.</p> <p>Designated one-way haul roads and paths for HGVs to avoid contact with waste.</p> <p>Dust will be managed in accordance with the Dust Management Plan prepared for the site.</p> <p>The Site Manager undertakes a daily visual assessment of dust levels and all site operatives will be vigilant and report any problems to the Site Manager.</p>			
<p>Dust emissions from the processing of waste materials (crushing and screening)</p>	<p>Local population in residential dwellings, sensitive land uses, and businesses listed in Table 2</p> <p>Site staff</p> <p>Users of roads - A372</p> <p>SSSI and priority habitats</p> <p>Priority and protected species</p>	<p>Air transport than deposition</p>	<p>All plant is regularly maintained to reduce emissions.</p> <p>The implementation of dust suppression systems including the use of spray on crushing plant, mobile water bowser for damping down, and regular maintenance of haul roads and site surface with water bowser and road sweeper.</p> <p>The site benefits from its own plant so operations can be done on smaller volumes more frequently to ensure that stockpiles are kept to a smaller size. This reduces dust/litter from stockpiles and protects the surrounding receptors.</p> <p>Minimal crushing will take place and no crushing takes place in very dry or windy conditions.</p> <p>The site is mainly used for storage of materials for CL:AIRE projects so minimal processing activities are undertaken on site therefore minimising dust production.</p> <p>All plant and equipment will be switched off when not in regular use.</p> <p>All processing activities conducted within the fenced site to prevent dust escaping and increase the number of dust barriers between receptors.</p>	<p>Unlikely due to measures in place</p>	<p>Local nuisance i.e. dust on cars, clothing, and vegetation.</p> <p>Nutrient enrichment.</p>	<p>Low</p>

			<p>Processing activities will be done on a campaign basis to avoid continuous on/off use and dust nuisance. Minimal processing will take place on site so it is highly unlikely that dust will be produced.</p> <p>Minimal plant and machinery is on site, consisting only of a screener, telehandler, excavator, crusher, grab and mobile water bowser.</p> <p>The site is enclosed within a fence to prevent dust escaping from the site.</p> <p>Dust will be managed in accordance with the Dust Management Plan prepared for the site.</p> <p>The Site Manager undertakes a daily visual assessment of dust levels and all site operatives will be vigilant and report any problems to the Site Manager</p>			
<p>Release of particulate matter (dusts), vapours and polluting gases</p>	<p>Local population in residential dwellings, sensitive land uses, and businesses listed in Table 2</p> <p>Site staff</p> <p>Users of roads - A372</p> <p>SSSI and priority habitats</p> <p>Priority and protected species</p>	<p>Air transport then inhalation</p>	<p>Permitted waste types do not include dusts, powders or loose fibres and waste is not typically dusty unless it is stored during prolonged dry periods when damping down is carried out where required.</p> <p>Asbestos containing waste is not accepted on site, so the release of asbestos fibres is extremely low.</p> <p>Hazardous waste is not accepted on site.</p> <p>Any non-conforming quarantine material is removed from site within 7 days.</p> <p>The potential sources of fugitive emissions to air have been identified and a Dust Management Plan has been prepared to prevent any potential dust emissions from reaching any nearby</p>	<p>Unlikely due to measures in place and the nature of waste accepted on site</p>	<p>Respiratory illness including lung cancer and mesothelioma.</p>	<p>Low</p>



			receptors. The Site Manager undertakes a daily visual assessment of dust levels and all site operatives will be vigilant and report any problems to the Site Manager			
--	--	--	-------------------------------------------------------------------------------------------------------------------------------------------------------------------------	--	--	--

To Water						
Contaminated rainwater run-off.	<p>Surface water and groundwater</p> <p>SSSI and priority habitats</p> <p>Rhyne network</p> <p>Somerset Levels and Moors</p>	Water	<p>Only non-hazardous and inert wastes are accepted on site consisting of as-dug naturally occurring non-contaminated material to be used for CL:AIRE projects. Therefore, run-off from site will not be contaminated.</p> <p>The site surface is permeable hardstanding with run off naturally draining into ground. Run off directly into local rhynes will be slowed or prevented by the perimeter planting.</p> <p>In the event of a spill, emergency procedures as outlined in the EMS will be followed.</p> <p>The southern planting acts as a protective barrier to run off escaping the site and draining into the ditch to the south.</p> <p>Booms and sand will be used to contain any surface run-off water following a leak, spill or fire event.</p> <p>Fuel and oil is not intended to be stored on site. In the event that it is then it will be stored in a fully bunded bowser.</p> <p>The site is secure through secure lockable gates and fences so theft or damage which may cause spills is minimal. Also, no fuel is intended to be stored on site.</p> <p>There are strict waste acceptance procedures in place at the site to prevent the acceptance of non-conforming waste types. Details of the waste acceptance procedures are provided in the EMS.</p> <p>Any non-conforming material will be stored in the quarantine area and removed from site within 7 days.</p>	Very unlikely due to the nature of wastes accepted on site	Contamination of groundwater surface water bodies	Low
Pest/Scavenging Birds						

<p>Birds and pests</p>	<p>Local population in residential dwellings, sensitive land uses, and businesses listed in Table 2</p> <p>SSSI and priority habitats</p> <p>Priority and protected species</p>	<p>Air transport and over ground</p>	<p>Permitted wastes stored onsite are not putrescible (as dug naturally occurring non-contaminated soils) and will therefore not be attractive to pests or scavenging birds. Green waste is not accepted on site so there will be no useable nesting sites available.</p> <p>No hazardous wastes are accepted on site.</p> <p>There are strict waste acceptance procedures in place at the site to prevent the acceptance of non-conforming waste types. Details of the waste acceptance procedures are provided in the EMS.</p> <p>The site is enclosed within secure animal proof fencing and gates to deny the access of pests.</p> <p>The potential badger sett in the southwest corner of the site is protected by a 30m exclusion zone segregated by an animal proof fence.</p> <p>Materials are stored in segregated stockpiles to prevent cross-contamination and encouraging odour that may attract birds and pests.</p> <p>The Site Manager will undertake regular reviews of pests and scavenging birds at the site. All site operatives will be vigilant and report any problems to the Site Manager.</p>	<p>Very unlikely due to the nature of the waste material</p>	<p>Nuisance to local receptors within 1km of the environmental permit boundary.</p>	<p>Low</p>
------------------------	---------------------------------------------------------------------------------------------------------------------------------------------------------------------------------	--------------------------------------	-----------------------------------------------------------------------------------------------------------------------------------------------------------------------------------------------------------------------------------------------------------------------------------------------------------------------------------------------------------------------------------------------------------------------------------------------------------------------------------------------------------------------------------------------------------------------------------------------------------------------------------------------------------------------------------------------------------------------------------------------------------------------------------------------------------------------------------------------------------------------------------------------------------------------------------------------------------------------------------------------------------------------------------------------------------------------------------------------------------------------	--------------------------------------------------------------	-------------------------------------------------------------------------------------	------------

Mud						
Mud from vehicle movements	Users of roads - A372	Tracked on vehicle wheels.	<p>The implementation of dust suppression systems including the use of spray on crushing plant, damping down and regular maintenance of haul roads and site surface with a water bowser and road sweeper.</p> <p>If mud is deposited on the access road and/or highway then a road sweeper will be employed if necessary.</p> <p>All vehicles exiting the site would be checked for exterior mud or debris before leaving the site.</p> <p>The site benefits from a wheel wash station consisting of a jet wash hose and brush.</p> <p>Designated one-way haul road for HGVs on site to minimise contact with materials and tracking of mud.</p> <p>The amount of mud on local roads will be monitored daily by site operatives.</p>	Unlikely due to measures in place.	Local nuisance. Mud on roads is unsightly and can increase the likelihood of road traffic accidents.	Low
Litter						
Litter	All receptors listed in Table 2.	Air transport then deposition	<p>Waste types received by the site generally do not contain litter that could become windblown. Operatives will be vigilant, and any litter reported will be removed immediately.</p> <p>All incoming loads will be sheeted and remain sheeted until they are ready to be tipped.</p> <p>The site perimeter is enclosed by planting and a fence to prevent any litter being blown from the site.</p> <p>Designated one-way haul road for HGVs to avoid contact with waste.</p>	Unlikely due to measures in place.	Local nuisance	Low



			<p>There are strict waste acceptance procedures in place to prevent the acceptance of non-conforming waste types. Details of the waste acceptance procedures are provided in the EMS.</p> <p>Working areas will be regularly cleared and inspected to minimise litter. Housekeeping measures are in place during operating hours.</p>			
--	--	--	---------------------------------------------------------------------------------------------------------------------------------------------------------------------------------------------------------------------------------------------------------------------------------------------------------------------------------------	--	--	--

Table A4: Accident and Incident Risk Assessment and Management Plan

What is the risk?			Managing the risk	Assessing the risk		
Hazard	Receptor	Pathway	Risk Management	Probability of Exposure	Consequence	What is the overall risk?
Fire or failure to contain firewater	Groundwater and surface water. Local residents listed in Table 2 SSSI and priority habitats Rhyne network	Infiltration and contamination of surface water	<p>No combustible or hazardous waste is accepted on site. If any incidental combustible waste is brought to site, then it will be transferred and stored in the quarantine area in containers made of fire-resistant materials to prevent fires spreading.</p> <p>All waste stored on permeable hardstanding.</p> <p>No waste shall be burnt on site and the use of welding/cutting tools (tools with a naked flame) are sanctioned first by the site manager/competent person.</p> <p>The southern planting acts as a protective barrier to run off escaping the site and draining into the ditch to the south.</p> <p>All site operatives are required to recognise signs of smouldering waste at the point of reception. Such wastes shall remain in the container and removed to the quarantine area. The site manager shall be informed.</p> <p>There will be strict waste acceptance procedures in place at the site to prevent the acceptance of non-conforming waste types. Details of the waste acceptance procedures are provided in the EMS.</p> <p>The operator will undertake routine maintenance of equipment in accordance with manufacturer's guidance. This will minimise the risk of mechanical failure which may result in an increased risk of combustion.</p>	Unlikely	Contamination of local groundwater and/or surface water.	Low

			<p>Site notices and training will be undertaken regarding fire hazards.</p> <p>Site Manager will be responsible for actions in the event of a fire.</p> <p>Fire booms, spill kits, fire blankets and extinguishers, sand and buckets available on site and will be used to contain any firewater.</p>			
Leaks and spillages of oil or fuel.	<p>Groundwater and surface water.</p> <p>SSSI and priority habitats</p> <p>Rhyne network</p>	Infiltration	<p>The operator will undertake regular maintenance of plant equipment in accordance with manufacturer's guidance. This will minimise the risk of mechanical failure which may result in leaks.</p> <p>Fuel is not intended to be stored on site. In the event that it is then all fuel, oil and lubricants stored on site will be double-bunded and stored in a secure container. The storage will be maintained and inspected in accordance with the manufacturer's recommendations.</p> <p>Daily vehicle / plant checks to ensure any fuel/oil leaks etc. are repaired as soon as possible.</p> <p>No hazardous or combustible wastes accepted on site.</p> <p>Booms and sand will be used to contain any spills and prevent it from entering the local watercourse.</p> <p>The southern planting acts as a protective barrier to run off escaping the site and draining into the ditch to the south.</p> <p>Spill kits are also readily available on site in case of a spill, these use absorbent mats which soak up any contaminating hydrocarbons.</p>	Unlikely due to measures in place and intention not to store fuel on site	Contamination of land and watercourses.	Low

			<p>The emergency response outlined in the EMS will be followed.</p> <p>The Site Manager will be responsible for ensuring effective remediation and documenting any incident.</p>			
<p>Flooding</p>	<p>Groundwater</p> <p>SSSI and priority habitats</p> <p>Rhyne network</p>	<p>Infiltration and Percolation</p>	<p>The site is in an area at a low risk of flooding from rivers or seas, and at a very low risk of flooding from surface water.</p> <p>The whole site is surfaced in permeable hardstanding to allow natural percolation on site and not increase runoff rates which encourages flooding.</p> <p>No hazardous wastes accepted on site.</p> <p>Waste types stored in open stockpiles are inert or non-hazardous as-dug naturally occurring material so in the event that surface water comes into contact with these wastes, significant pollution or contamination of groundwater or surface water is considered highly unlikely.</p> <p>Booms and sand will be used to contain any spills and prevent it from entering the local watercourse.</p>	<p>Unlikely due to measures in place in the nature of the proposed development.</p>	<p>Disruption to works operations</p> <p>Contamination of local groundwater and/or surface water</p>	<p>Low</p>
<p>Vandalism</p>	<p>Local population in residential dwellings, sensitive land uses, and businesses listed in Table 2</p> <p>Site staff</p>	<p>Unauthorised entry to the site</p>	<p>The site is gated and surrounded by fencing and vegetation.</p> <p>Access to the waste area will be restricted to trained depot staff.</p> <p>No hazardous wastes are accepted on site.</p> <p>No fuel or oil is intended to be stored on site.</p>	<p>Unlikely due to measures in place.</p>	<p>Release of polluting materials to air, water or land.</p>	<p>Low</p>

			<p>Any identified damage to the site security will be recorded and temporarily repaired as necessary before the end of the working day. Permanent repair or replacement will be undertaken as soon as practicable.</p> <p>Procedures are in place which require all visitors to the site to sign in on arrival and sign out on departure.</p>			
All on-site hazards from wastes; machinery and vehicles	Local human population gaining unauthorised entry to the site, site staff and contractors	Direct physical contact	<p>Activities will be managed and operated in accordance with an EMS which will include measures to prevent unauthorised access.</p> <p>No hazardous wastes or fuel stored on site.</p>	There is always a risk of accidents, but measures have been put in place to reduce the risk associated with site activities.	Injury or health effects	Low

Table A5: Climate change risk assessment and management plan

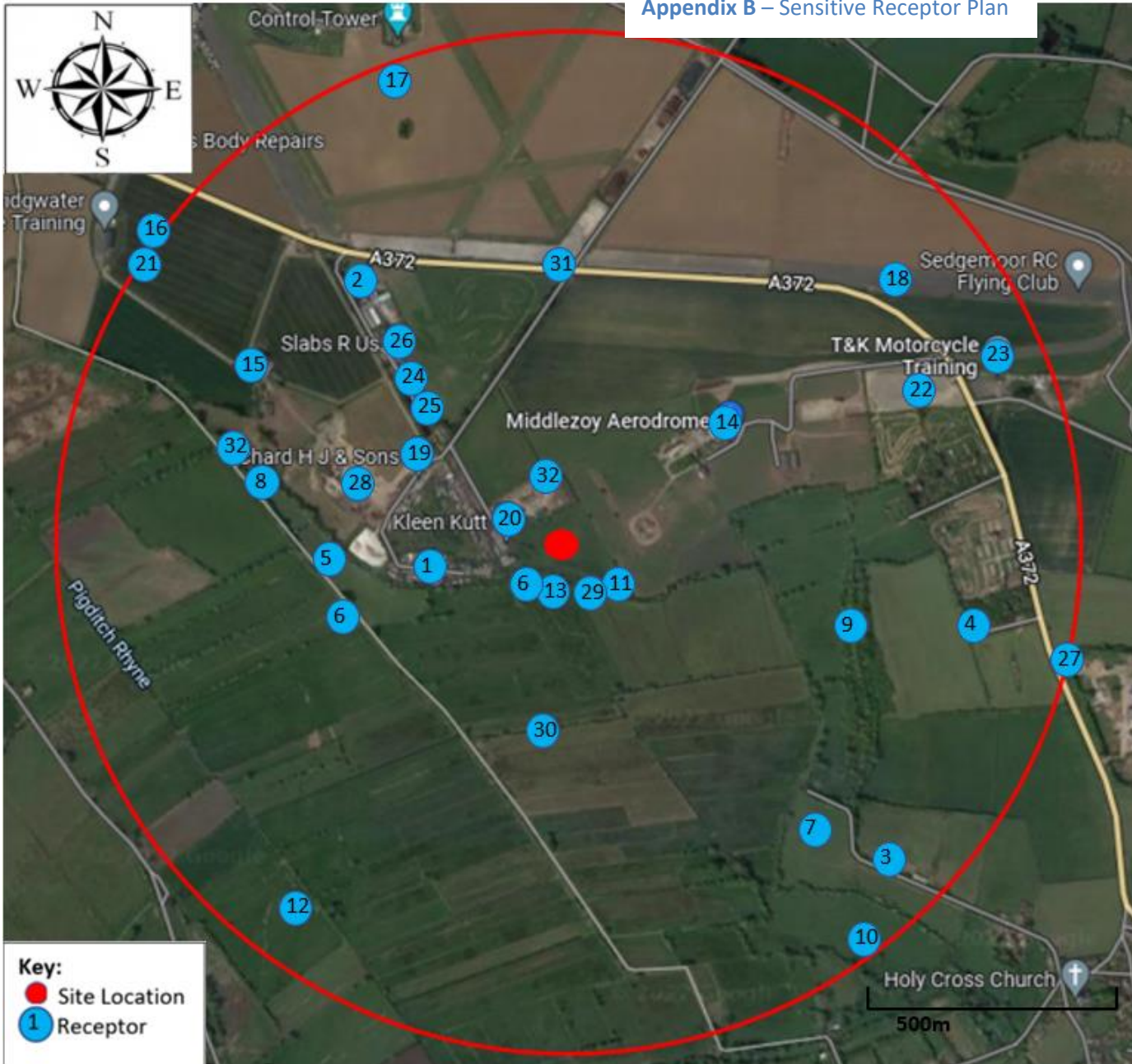
What is the risk?			Managing the risk	Assessing the risk		
Hazard	Receptor	Pathway	Risk Management	Probability of Exposure	Consequence	What is the overall risk?
Access issues due to flooding or sea level rise	Groundwater and surface water Local residents listed in Table 2 SSSI and priority habitats Rhyne network Site staff	Surface water	<p>The ground level on site and the access road is higher than the level of the nearest watercourse.</p> <p>The site has a permeable surface so water can naturally percolate into ground to prevent flooding.</p> <p>The southern site boundary by the watercourse is protected by a planted barrier to slow flooding.</p> <p>The site is located in Flood Zone 3 but assessed as low risk of flooding from rivers or seas and at a very low risk of flooding from surface water.</p> <p>Towens of Weston are signed up to the EA's flood warning service and have specific actions to take in the event of a flood alert and/or flood warning.</p>	Unlikely	Inability to access site	Low
Wildfires	Site staff Site infrastructure Local residents listed in Table 2 SSSI and priority habitats Rhyne network	Spread of fire	<p>No large areas of woodland for fires to start within 1km of the site. The site is surrounded by moors where wildfires are very unlikely.</p> <p>The rhyne network surrounding the site acts as a barrier for wildfires to prevent spread of wildfires.</p> <p>The site benefits from access to a borehole extraction point at the neighbouring site to provide firewater to fight fires and prevent spread.</p> <p>Fuel is not intended to be stored on site. In the event that it is then all fuel, oil and lubricants stored on site will be</p>	Unlikely due to site location	Site infrastructure damage and risk to staff	Low

			<p>double-bunded and stored in a secure container. The storage will be maintained and inspected in accordance with the manufacturer's recommendations.</p> <p>No combustible wastes accepted on site.</p> <p>The boundary planting on site will be regularly maintained and cleared of weeds. It will be monitored during hot and dry weather.</p> <p>The emergency response outlined in the EMS will be followed.</p> <p>The Site Manager will be responsible for ensuring effective remediation and documenting any incident.</p>			
Failure of essential site services	<p>Site staff</p> <p>Local residents listed in Table 2</p> <p>SSSI and priority habitats</p> <p>Rhyne network</p>	<p>Water</p> <p>Electricity supply</p> <p>Drainage systems</p>	<p>No constructed drainage system on site, the drainage follows natural processes to allow water to naturally percolate into ground.</p> <p>The site benefits from access to a borehole extraction point at the neighbouring site to provide firewater to fight fires and prevent spread.</p> <p>No electricity supply or requirement on site.</p> <p>A mobile water bowser is accessible to the site 24 hours a day to provide water.</p>	Unlikely due to minimal site service requirements	Disruption to works operations	Low

<p>Changing weather patterns</p>	<p>Groundwater and surface water Site staff Local residents listed in Table 2 SSSI and priority habitats Rhyne network</p>	<p>High temperatures (7° higher compared to average summer temperatures) and reduced rainfall Intense rainfall</p>	<p>No hazardous wastes are accepted on site. No fuel or oil is intended to be stored on site. The site benefits from a site office consisting of a 40ft shipping container for site staff to take breaks sheltered from any weather conditions. No constructed drainage system on site, the drainage follows natural processes to allow water to naturally percolate into ground. The site benefits from access to a borehole extraction point at the neighbouring site and a mobile water bowser to provide water for the site for dust suppression during high temperatures/reduced rainfall. Water use will be monitored and baseline requirements calculated. All site staff are trained to identify smouldering waste and waste stockpiles are regularly monitored. Shading electrical equipment if it is subject to direct sunlight for prolonged periods of time. Regular inspection and preventative maintenance of site, plant and equipment. The Site Manager will be responsible for ensuring effective remediation and documenting any incident. The site operations will cease in extreme or adverse weather conditions. No treatment will take place during dry or windy conditions.</p>	<p>Unlikely due to site location and requirements on site.</p>	<p>Site infrastructure damage. Release of polluting materials to air, water or land. Flooding</p>	<p>Low</p>
----------------------------------	----------------------------------------------------------------------------------------------------------------------------------------------------------------	-----------------------------------------------------------------------------------------------------------------------------	-----------------------------------------------------------------------------------------------------------------------------------------------------------------------------------------------------------------------------------------------------------------------------------------------------------------------------------------------------------------------------------------------------------------------------------------------------------------------------------------------------------------------------------------------------------------------------------------------------------------------------------------------------------------------------------------------------------------------------------------------------------------------------------------------------------------------------------------------------------------------------------------------------------------------------------------------------------------------------------------------------------------------------------------------------------------------------------------------------------------------------------------------------------------------------------------------------------------------------------------------------------------------------------------	----------------------------------------------------------------	---------------------------------------------------------------------------------------------------------------------	------------

			The site follows a flood risk assessment and drainage strategy which will be annually reviewed.			
Changes in flow in rhyne network	Rhyne network Groundwater and surface water	Changes in maximum and minimum flow	<p>No constructed drainage system on site, the drainage follows natural processes to allow water to naturally percolate into ground.</p> <p>No hazardous wastes or fuel stored on site.</p> <p>The site follows a flood risk assessment and drainage strategy which will be annually reviewed.</p> <p>The southern site boundary by the watercourse is protected by a planted barrier to slow flooding.</p>	Unlikely	Flooding Damage to site infrastructure	Low

Appendix B – Sensitive Receptor Plan



ID	Receptor
Residential	
1	Caravan Park
2	Springway Farm
3	Property on Knowleyards Road
4	The Old Ambulance House
Designated Land and Waterways	
5	Site of Special Scientific Interest (SSSI) – Langmead and Weston Level
6	Priority Habitat Inventory (PHI) – Lowland Meadows
7	PHI–Lowland Dry Acid Grassland
8	PHI – Coastal and Floodplain Grazing Marsh
9	PHI – Deciduous Woodland
10	PHI – Traditional Orchards
11	Important Plant Areas Plantlife
12	Somerset Level and Moor
13	Pigditch Rhyne Network
Sensitive Land Uses	
14	Middlezoy Aerodrome
15	Farm
16	Westonzoyland Allotments
17	Westonzoyland Airfield
18	Sedgemoor RC Flying Club
Industrial/Commercial	
19	JWF Engineering
20	Kleen Kutt
21	Bridgwater Motorcycle Training
22	Grandfields Motor Track
23	T&K Motorcycle Training
24	Burnham Coal Supplies
25	Regency
26	Slabs R Us
27	Seven Acres Industrial Estate
28	Towens Westonzoyland Depot
Public Rights of Way	
29	Restricted Byway
30	Public Footpath
Infrastructure/utilities	
31	A372
Priority species	
32	Priority Species – Curlew/Lapwing/Redshank/Water Vole