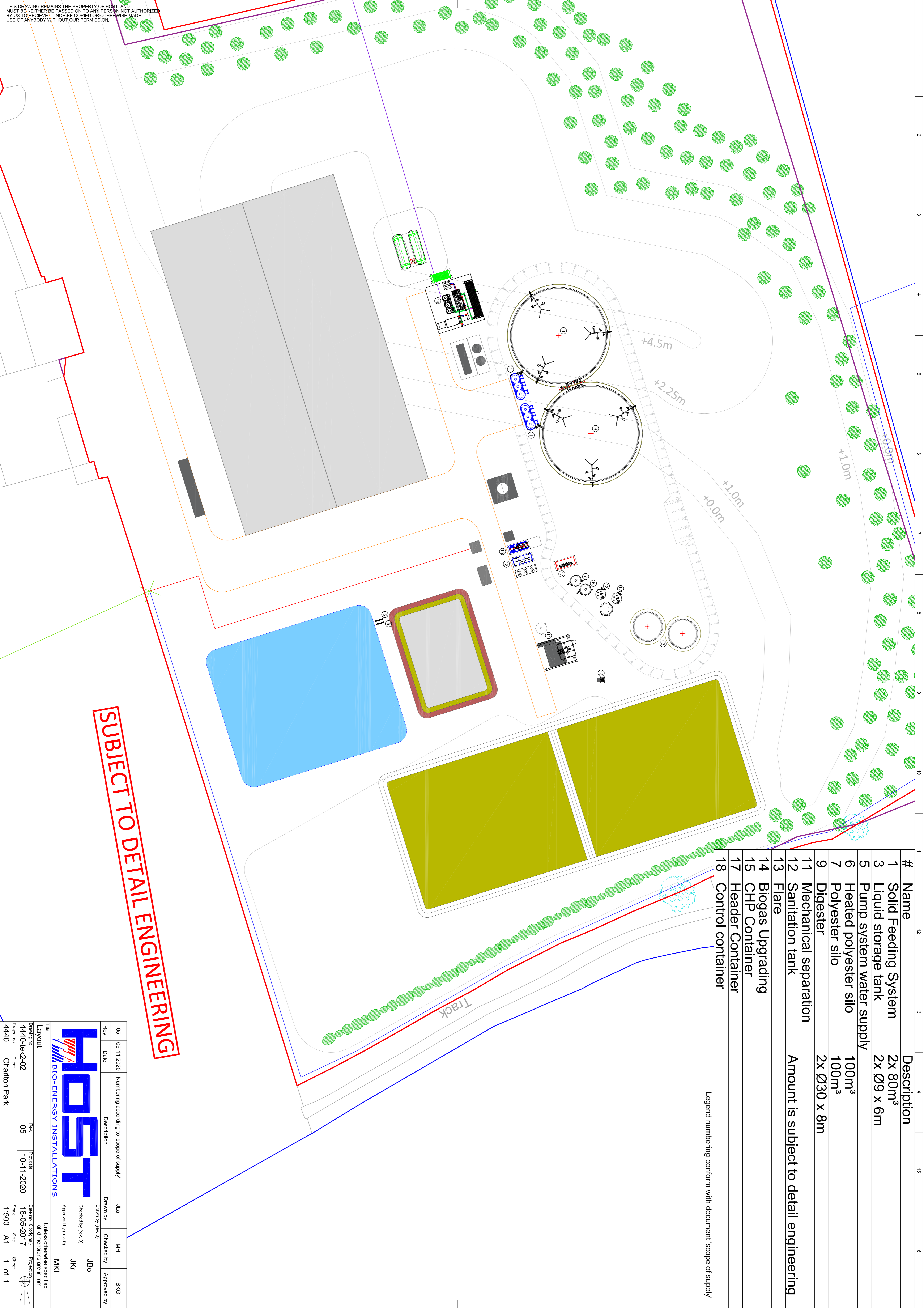


THIS DRAWING REMAINS THE PROPERTY OF HOST AND MUST BE NEITHER BE PASSED ON TO ANY PERSON NOT AUTHORIZED BY US TO RECEIVE IT, NOR BE COPIED OR OTHERWISE MADE USE OF ANYBODY WITHOUT OUR PERMISSION.



#	Name	Description
1	Solid Feeding System	2x 80m ³
3	Liquid storage tank	2x Ø9 x 6m
5	Pump system water supply	
6	Heated polyester silo	100m ³
7	Polyester silo	100m ³
9	Digester	2x Ø30 x 8m
11	Mechanical separation	
12	Sanitation tank	Amount is subject to detail engineering
13	Flare	
14	Biogas Upgrading	
15	CHP Container	
17	Header Container	
18	Control container	

Legend numbering conform with document 'scope of supply'

SUBJECT TO DETAIL ENGINEERING

Rev.	05	Date	05-11-2020	Description	Numbering according to 'scope of supply'	Drawn by	JLA	Checked by	MHi	Approved by	SKG
Project no.	4440	Client	Charlton Park	Scale	1:500	Size	A1	Sheet	1 of 1	www.host.nl	
Drawing no.	4440-16k2-02	Rev.	05	Part date	10-11-2020	Date (rev. 0 (original))	18-05-2017	Unless otherwise specified all dimensions are in mm			
HOST			BIO-ENERGY INSTALLATIONS			Approved by (rev. 0)		Checked by (rev. 0)		Projection	
						MKI		JKr		1st	