

Site Safety

- No Smoking
- Eye Protection must be worn
- Protective Gloves must be worn
- High visibility jackets must be worn beyond this point
- Hard hats must be worn on this site at all times
- Ear Defenders must be worn
- Protective footwear must be worn

EMERGENCY ISOLATION POINTS

HAZARDOUS MATERIALS **HAZARDOUS + INFLAMMABLE** **FIRE-FIGHTING WATER**

KEY PERSONNEL

FIRST AIDERS:

FIRE WARDENS:

EMERGENCY TEL:

INCIDENT HOTLINE xxxxxx xxxxxxxx

ASSOCIATED DRAWINGS

HAZARDOUS + INFLAMMABLE

HAZARDOUS + INFLAMMABLE

HAZARDOUS + INFLAMMABLE

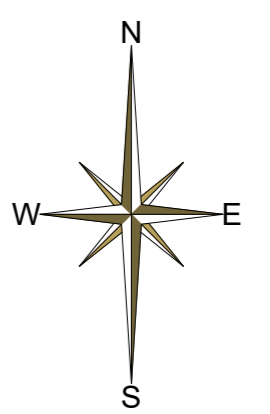
SITE ENTRANCE

M **WATER SHUT OFF MAINS**

H **LOCATED OFFSITE AT 1ST ROUNDABOUT**

VEHICLE TURNING

PROPOSED M.R.F. LOCATION



SITE NAME
ERIN MRF (PROPOSED)

DRAWING TITLE
SITE SAFETY & INDUCTION LAYOUT SHEET 1 OF 2

DRAWING NUMBER
ERN-MRF2000

TASK NUMBER
21339

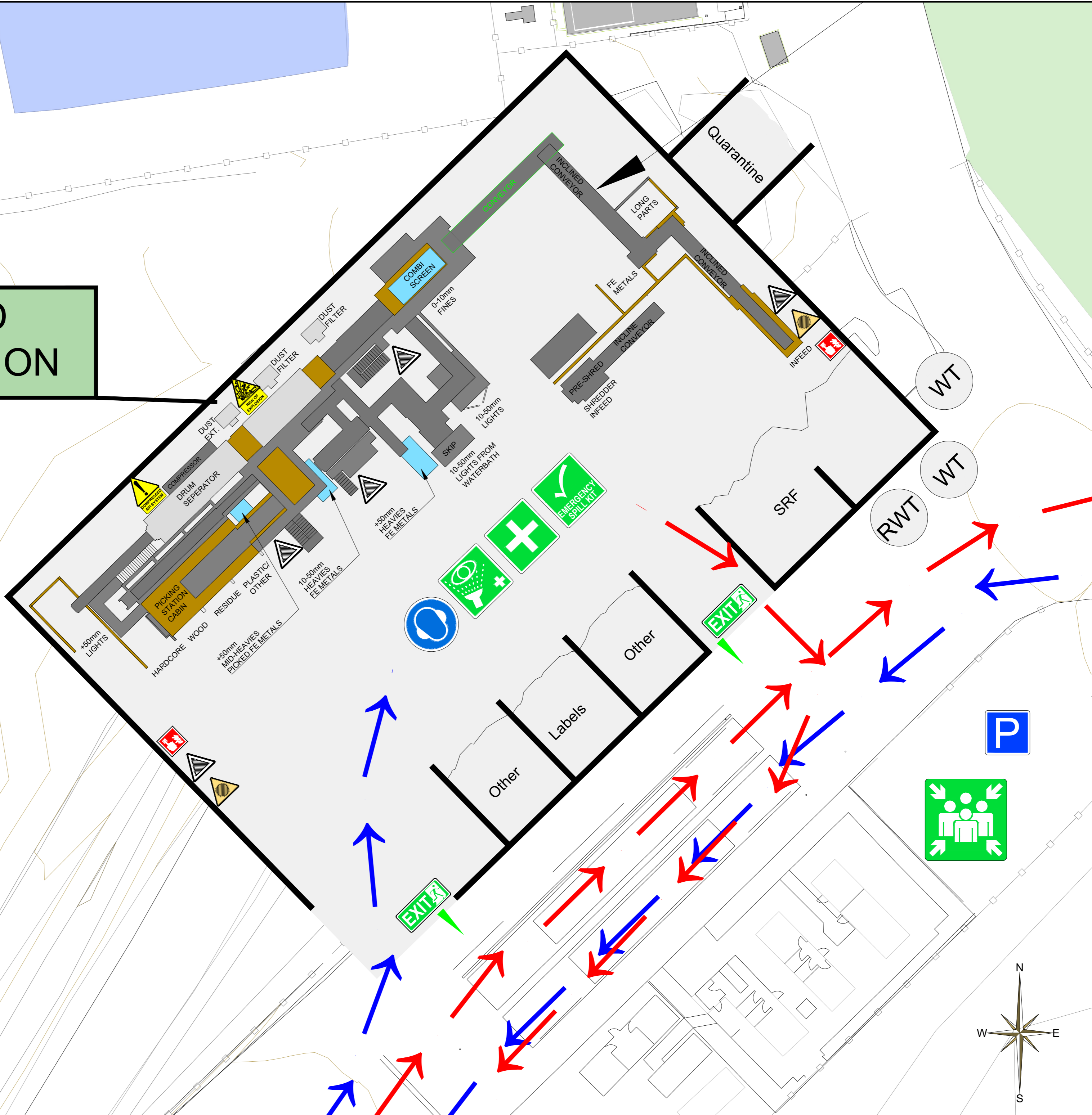
SCALE 1:1000 @ A2	REVISION R/DRN
OIDRN R.L Meaden	R/DATE
DATE 26.04.2023	R/DATE
APP L.Edmonds	R/APP
DATE	R/DATE

INFORMATION TAKEN FROM
SURVEY SERVICES MASTER FILE ERN173s-May2022 - Rev F

OTHER DRAWINGS ERN176 - Proposed MRF Loc

NO UNAUTHORISED REPRODUCTION OR DISTRIBUTION

**PROPOSED
M.R.F. LOCATION**



EMERGENCY ISOLATION POINTS

HAZARDOUS MATERIALS

--	--

KEY PERSONNEL

TRAFFIC ROUTES

- Mandatory PPE Area (Red dashed line)
- Safe Walking Route (Green dashed line)
- Incoming Traffic (Blue arrow)
- Outgoing Traffic (Red arrow)
- Barrier (Black line)

KEY PERSONNEL

FIRST AIDERS:

FIRE WARDENS:

EMERGENCY TEL:

INCIDENT HOTLINE: xxxxxx xxxxxxxx

ASSOCIATED DRAWINGS:

SITE NAME		ERIN MRF (PROPOSED)	
DRAWING TITLE		SITE SAFETY & INDUCTION LAYOUT SHEET 2 OF 2	
DRAWING NUMBER		ERN-MRF2000	
TASK NUMBER		21339	
SCALE	1:250 @ A2	REVISION	
ODRN	R.L. Meaden	R/DRN	
ODATE	26.04.2023	R/DATE	
APP	L. Edmonds	R/APP	
DATE		R/DATE	
INFORMATION TAKEN FROM			
SURVEY	SERVICES MASTER FILE	ERN173s-May2022 - Rev F	
OTHER DRAWINGS	ERN176 - Proposed MRF Loc		

