



NON-TECHNICAL SUMMARY FOR WASTE PERMIT APPLICATION FOR STOLTHAVEN DAGENHAM LTD

Report for: Stolthaven Dagenham Ltd

Ricardo ref. ED18482100

Issue: 1

23/11/2023

Customer:
Stolthaven Dagenham Ltd

Contact:
Mark Roberts, Gemini Building, Fermi Avenue, Harwell,
Didcot, OX11 0QR, UK

T: +44 (0) 1235 753 611
E: mark.roberts@ricardo.com

Customer reference:
ED148482

Confidentiality, copyright and reproduction:
This report is the Copyright of Ricardo Energy & Environment, a trading name of Ricardo-AEA Ltd and has been prepared by Ricardo Energy & Environment under contract to Stolthaven Dagenham Ltd for Environmental Permit support for the Dagenham Facility, dated 31/08/2023. The contents of this report may not be reproduced in whole or in part, nor passed to any organisation or person without the specific prior written permission of the Commercial Manager at Ricardo Energy & Environment. Ricardo Energy & Environment accepts no liability whatsoever to any third party for any loss or damage arising from any interpretation or use of the information contained in this report, or reliance on any views expressed therein, other than the liability that is agreed in the said contract.

Author:
Mark Roberts

Approved by:
Simon Ford

Date:
23/11/2023

Ricardo reference:
ED148482

Ricardo is certified to ISO9001, ISO14001, ISO27001 and ISO45001.

Ricardo, its affiliates and subsidiaries and their respective officers, employees or agents are, individually and collectively, referred to as the 'Ricardo Group'. The Ricardo Group assumes no responsibility and shall not be liable to any person for any loss, damage or expense caused by reliance on the information or advice in this document or howsoever provided, unless that person has signed a contract with the relevant Ricardo Group entity for the provision of this information or advice and in that case any responsibility or liability is exclusively on the terms and conditions set out in that contract.

CONTENTS

1. INTRODUCTION	1
1.1 BACKGROUND	1
1.2 LOCATION	1
1.3 EXISTING ACTIVITIES	2
2. WHAT IS BEING APPLIED FOR	2
3. SUMMARY OF KEY TECHNICAL STANDARDS AND CONTROL MEASURES	3

Appendices

APPENDIX A- PERMIT BOUNDARY PLAN

Glossary

Abbreviation	Definition
BAT	Best Available Techniques
BAT-AEL	Best Available Techniques – Associated Emission Level
BATc	Best Available Techniques Conclusions
BREF	Best Available Techniques Reference document
COMAH	The Control of Major Accident Hazards Regulations 2015
CMS	Continuous Monitoring System
CMMS	Computerised Maintenance Management System
CIP	Clean in Place
DAA	Directly Associated Activity
EHSM	Environmental, Health and Safety Management System
ELV	Emission Limit Value
EMS	Environmental Management System
ENE	Energy Efficiency
EA	Environment Agency
EPR	The Environmental Permitting (England and Wales) Regulations 2016
EWC	European Waste Catalogue
HGV	Heavy Goods Vehicle
IED	Industrial Emissions Directive
MAPP	Major Accident Prevention Policy
NTS	Non-Technical Summary
OMP	Odour Management Plan
SMS	Safety Management System
SHEQ	Safety, Health, Environmental and Quality
TCM	Technically Competent Manager
UCO	Used Cooking Oil

1. INTRODUCTION

1.1 BACKGROUND

Ricardo was commissioned by Stolthaven Dagenham Ltd (SDL) to support a bespoke permit application (reference EPR/MB3004LK/A001) for its facility in Dagenham, hereafter referred to as “the Facility”.

Waste management activities at the Facility will involve the storage and treatment of up to 300,000 tonnes per annum of non-hazardous used cooking oil (UCO), food waste and animal fat (tallow). No hazardous waste will be accepted, treated or stored.

Non-waste activities, involving the storage of chemicals and fuels are already undertaken at the Facility and the waste activities will take place alongside the existing activities.

This non-technical summary (NTS) document summarises what is being applied for, the Facility and the key technical standards and control measures that will be employed to manage risk.

The environmental permit application comprises the documents listed below.

- Application forms (Part A, Part B2, Part B4 and Part F1)
- Site plan identifying in green the proposed permit boundary – Appendix A of this non-technical summary
- Site condition report (SCR)
- Operating techniques.
- Non-technical summary.
- Environmental Risk Assessment (ERA)
- Odour management plan.
- Details of proposed technically competent managers.
- Site drainage plan
- Safety Management System (SMS)
- Major Accident Prevention Policy (MAPP)

The existing environmental management system (EMS) will be reviewed and updated to include the proposed waste operations. A fire prevention plan (FPP) already forms part of the SMS and MAPP and is relevant to the proposed waste activities.

1.2 LOCATION

The Facility is approximately 2 hectares in area and is located in the centre of an industrial estate approximately 2km South of Dagenham in Essex, at Choats Road, Dagenham, RM9 6PU (National Grid Reference TQ 48547 82037).

The Facility’s main entrance and gate house is accessed from Hindmans Way.

The River Thames borders the South of the site, and the Crossness Pumping Station and Sewage Treatment Works are located on the opposite side of the river.

The site is surrounded by a mixture of large industrial and small commercial units, including a skip and waste recycling site, a haulage company, warehousing, vehicle rental and hiring and a recycled road stone storage yard.

The existing storage tank depot and surrounding land uses are shown in Figure 1.

Figure 1: Proposed Site



Image source: Google earth. Retrieved 03/08/22.

<https://earth.google.com/web/@51.51838505,0.14221755,2.17155825a,623.42675655d,35y,36.98438582h,59.99826227t,0.00000059r>

1.3 EXISTING ACTIVITIES

The existing activities undertaken at the site (the storage of hazardous liquid fuel and chemicals in around 100 storage tanks), these are upper tier activities under the Control of Major Accident Hazards Regulations 2015 (COMAH). The regulations require the use of engineered infrastructure, appropriate management and control measures to prevent serious accidents or incidents.

Marine tanker vessels on the River Thames and road tankers transfer liquids to and from the Facility.

Existing activities are regulated by the Health and Safety Executive (HSE) and The Environment Agency (EA) as the competent authorities.

Since being acquired by SDL in 2012, the site has seen considerable investment and upgrading to meet, and in some areas exceed, the latest COMAH regulatory requirements.

SDL has an Environmental, Health and Safety Management System (EHSM) which supports the Major Accident Prevention Policy (MAPP). The implementation of the MAPP is aimed at minimising the risk from hazardous substances capable of causing a major accident.

SDL holds and maintains a company quality management system accredited to ISO 9001 and ISCC certification 2022. They are committed to continual improvement of its engineered infrastructure and operating techniques.

A site-specific environmental management system (EMS) will be drafted and implemented to ensure all environmental risks posed by the activities are identified and both management and engineered infrastructure measure are implemented to reduce the risks.

2. WHAT IS BEING APPLIED FOR

Under the Environmental Permitting (England and Wales) Regulations 2016 (as amended), a bespoke waste environmental permit is required for the proposed non-hazardous waste treatment and storage operations.

SDL proposes to operate a waste storage facility which will receive up to 300,000 tonnes per year of liquid wastes, namely Tallow (animal fat), UCO, food and acid oil waste. Proposed waste quantities are shown in Table 1 below.

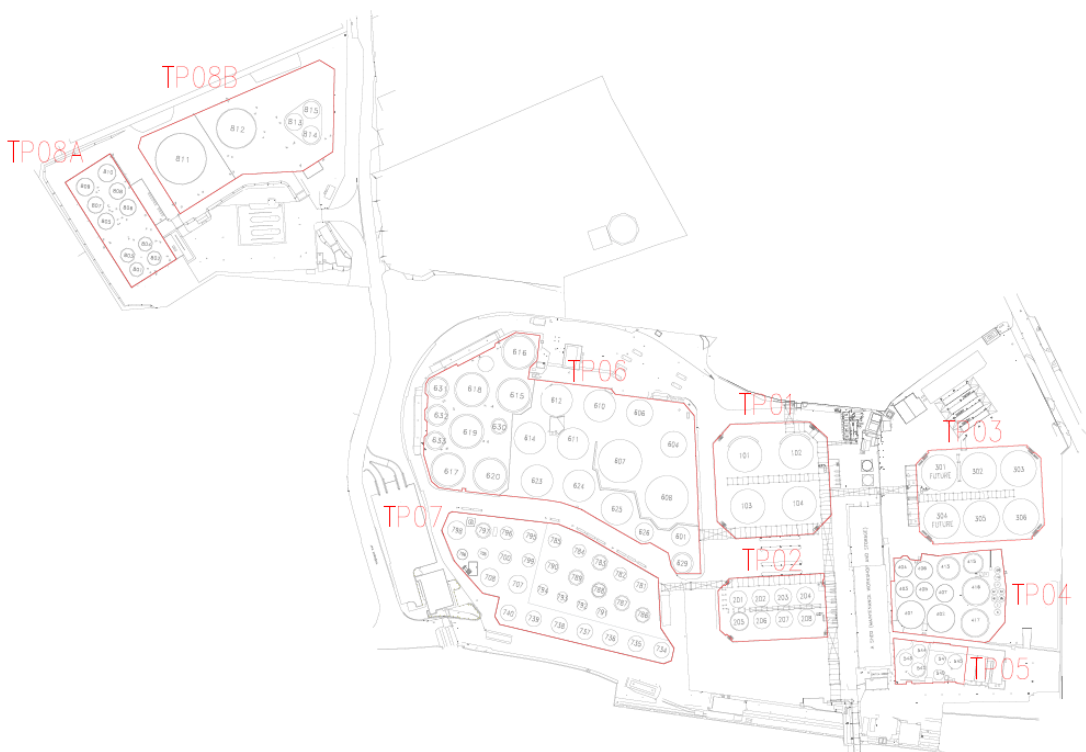
Table 1: Proposed waste storage quantities

Item	Details
Total annual quantity of waste accepted at the Facility	300,000 tonnes.
UCO storage capacity (at any time)	25,000 tonnes.
Food waste storage capacity (at any time)	10,000 tonnes.
Tallow storage capacity (at any time)	10,000 tonnes.
Acid oil storage capacity (at any time)	10,000 tonnes.
Operating hours	24 hours a day/ 7 days a week.

Wastes will be stored pending onward transfer to other permitted facilities for recovery and refining into biodiesel. The wastes will be transferred to and from the Facility by heavy goods vehicle road tankers and by marine shipping tankers which will dock alongside the Facility on the River Thames.

Waste will be sent for recovery and not disposal. No hazardous waste will be accepted, treated or stored at the Facility. The layout of storage tanks is shown in Figure 2 below.

Figure 2: Storage tank layout



3. SUMMARY OF KEY TECHNICAL STANDARDS AND CONTROL MEASURES

The site’s existing COMAH infrastructure and procedures will allow the Facility to operate to the relevant appropriate waste control measures that are set-out in the Environment Agency (EA) guidance for non-hazardous and inert waste: appropriate measures for permitted facilities.

A summary of technical standards is provided in Table 2. Further details are included in the Operating Techniques document included in the permit application.

Table 2: Summary of the key technical standards and control measures to mitigate potential environmental and health and safety impacts

Technical standards	Control measures to mitigate impact(s)
Management System	<p>A Safety Management System (SMS) and Major Accident Prevention Policy (MAPP) are currently in place for existing activities under COMAH. A further site-specific environmental management system (EMS) will be produced to include the proposed waste operations. This will identify all the potential environmental risks posed by the activities and how they are to be mitigated.</p>
Staff Competence	<p>Two SDL employees have been appointed to undertake an appropriate technical competence waste management (TCM) training course with an approved waste management course provider to obtain a relevant appropriate TCM waste qualification.</p> <p>The employees will provide technical competent management at the Facility and provide further staff training to all staff to raise awareness of the facility’s waste operations and EMS. The staff TCM staff will make sure that all waste is handled and stored appropriately and safely, that robust waste acceptance procedures are adhered to, and that only permitted waste is accepted. The TCM staff will also make sure that any incidents, faults, leaks or fires are reported and remedied promptly.</p>
Accident management plan	<p>The SMS and MAPP are currently in place, as required under COMAH, and will provide robust control measures and infrastructure to prevent accidents. Prior to any waste operations taking place, these will be updated to include the waste operations and to ensure that all potential accidents, incident and risks are identified and mitigated, specifically to include:</p> <ul style="list-style-type: none"> • Waste types and their risks. • Waste transfer and handling. • Mechanical breakdowns or plant failures. • Spillages and leaks during transfers. • Storage containment or failure. • Fire prevention, fighting and fire water retention. • Vandalism and arson. • Human error. • Main services failure (steam, power or gas) • Site flooding or extreme weather. • Accident response, reporting, staff training and incident exercises. • Preventing offsite emissions after an accidental release.
Contingency plan	<p>The Facility has an existing contingency plan in case of breakdowns or unforeseen shutdowns, which is detailed in the facility’s SMS and MAPP. Further contingency measures are set out in the operating techniques (section 6.1.9) of the permit application. In summary, all waste acceptance will cease immediately, any waste stored on site will be retained and any waste received will be returned to the producing site.</p>
Fire prevention	<p>The storage of the waste poses a minor fire risk. Cooking oil has a flashpoint of 400°C to 436 °C. To reduce the risk of fire, wastes will only be warmed to 35°C to 60 °C and the temperature will be continuously monitored with an automatic tank gauging (ATG) system.</p> <p>The Facility under COMAH has an existing robust SMS and MAPP, which includes an EA approved fire plan complete with fire prevention and mitigation measures. Measures include 24-hour security and operation, fire detection, fire-fighting systems and sealed drainage with fire water retention systems.</p>
Flooding	<p>The site is located within a 1 in 100 year flood plain. Protection is provided by a flood wall along the River Thames and by the storage tanks secondary containment and bunded walls.</p>
Decommissioning	<p>SDL will prepare a site closure plan in line with Environment Agency Guidance. The plan will confirm how the site will be decommissioned to return it to a satisfactory state upon the cessation of activities.</p>

Technical standards	Control measures to mitigate impact(s)
Pre waste acceptance	The Facility will implement robust pre acceptance procedures, forming part of the facility's operating procedures and EMS. This includes requesting details about the waste transfer prior to waste reception, to make sure that the waste is acceptable under permit and that it does not pose any unacceptable risks.
Waste acceptance and tracking	Waste acceptance procedures will include the sampling and testing of wastes prior to being unloaded at site, as well as the visual inspection and monitoring of all incoming loads. All waste received or sent out will be tracked using an electronic recording system, which records the waste's quantity and location.
Quarantine	If waste is found to be unsuitable after sampling or inspection, it will be re-tested. If still found to be unsuitable, it will be rejected and returned to the producing site within 24 hours.
Handling and transfer	Transfers of waste to and from storage tanks will be conducted using sealed engineered above ground pipework and infrastructure. Transfers are continuously visually monitored and controlled by digital systems and shut off switches/valves. All handling is supervised by a trained site operator.
Waste storage	All waste loads will be kept segregated and not mixed with other wastes. All storage tanks will be specially engineered and fully sealed, with the benefit of 110% secondary impermeable concrete containment bunding. These will be fully compliant with The Control of Pollution (Oil Storage) (England) Regulations 2001. All storage tanks will be fitted with level gauges and high-level alarms. A tertiary sealed drainage system provides further containment around the Facility.
Boiler and treatment (heating)	Certain wastes will require heating to maintain their viscosity and prevent blockages. Heating coils in storage tanks will be heated using steam produced by a gas fired boiler, constantly warming the waste to 35 °C to 60 °C. Temperatures will be constantly controlled and monitored using an automatic tank gauging system to prevent overheating.
Point source emissions to air	The Facility operates a gas fired boiler producing steam to heat certain wastes. All stack emissions are regularly checked to ensure that they are not causing any potential pollution emissions or dark smoke.
Preventing fugitive emissions to air	<p>Fugitive emissions to air are not anticipated. The existing Facility has never received any complaints or reports of issues such as odour, dust, noise or vibration.</p> <p>To prevent odour, transfers will be conducted within a closed system and storage tanks will be vented to atmosphere at high levels. In the event of an odour complaint, the Facility will follow its odour management plan and complaints procedure.</p> <p>All complaints will be immediately reported, logged, investigated and appropriate action will be taken.</p>
Preventing fugitive emissions to water	<p>All storage tanks, pipework and transfer systems are regularly monitored and inspected for leaks and spillages. Transfers are always supervised by trained site operatives.</p> <p>All surface water is captured and contained within the tertiary sealed drainage system, which flows to an oil interceptor and then to surface water drains off site.</p> <p>In case of a serious spillage or leak, the system can be isolated with a shut of valve and any contaminated liquids would be contained on site. Contaminated liquids can then be treated in the effluent treatment plant, prior to being discharge to mains foul sewer under a trade effluent discharge consent.</p> <p>Road drainage around the weigh bridge is directly discharged to offsite surface water systems. Other than HGV weighing, no waste operations are conducted in this area.</p>
Point source emissions to sewer	The site has an impermeable sealed drainage system, and the tertiary and secondary drainage systems flow to oil interceptors. Any contaminated liquid is captured and diverted to the on-site effluent treatment plant and aeration tank, prior to being discharged to the mains foul sewer under a Thames Water trade effluent discharge consent. The discharge effluent is regularly tested by site operatives to ensure full compliance with the discharge consent conditions.

Technical standards	Control measures to mitigate impact(s)
Preventing fugitive emissions to land and groundwater	<p>All storage tanks are sealed and located within impermeable bunds that provide secondary containment for 110% of the largest tank. All waste storage will be in accordance with the Control of Pollution (Oil Storage) (England) Regulations 2011.</p> <p>Spillage kits are located in key storage areas and all staff are trained in their deployment. All transfers of waste will be conducted under supervision and regular checks made of the pipework and transfer systems. All pipework is above ground to facilitate inspections and to identify leaks.</p>

4. APPENDICES

Appendix A – Permit boundary plan

Appendix A- Permit boundary plan



T: +44 (0) 1235 75 3000

E: enquiry@ricardo.com

W: ee.ricardo.com