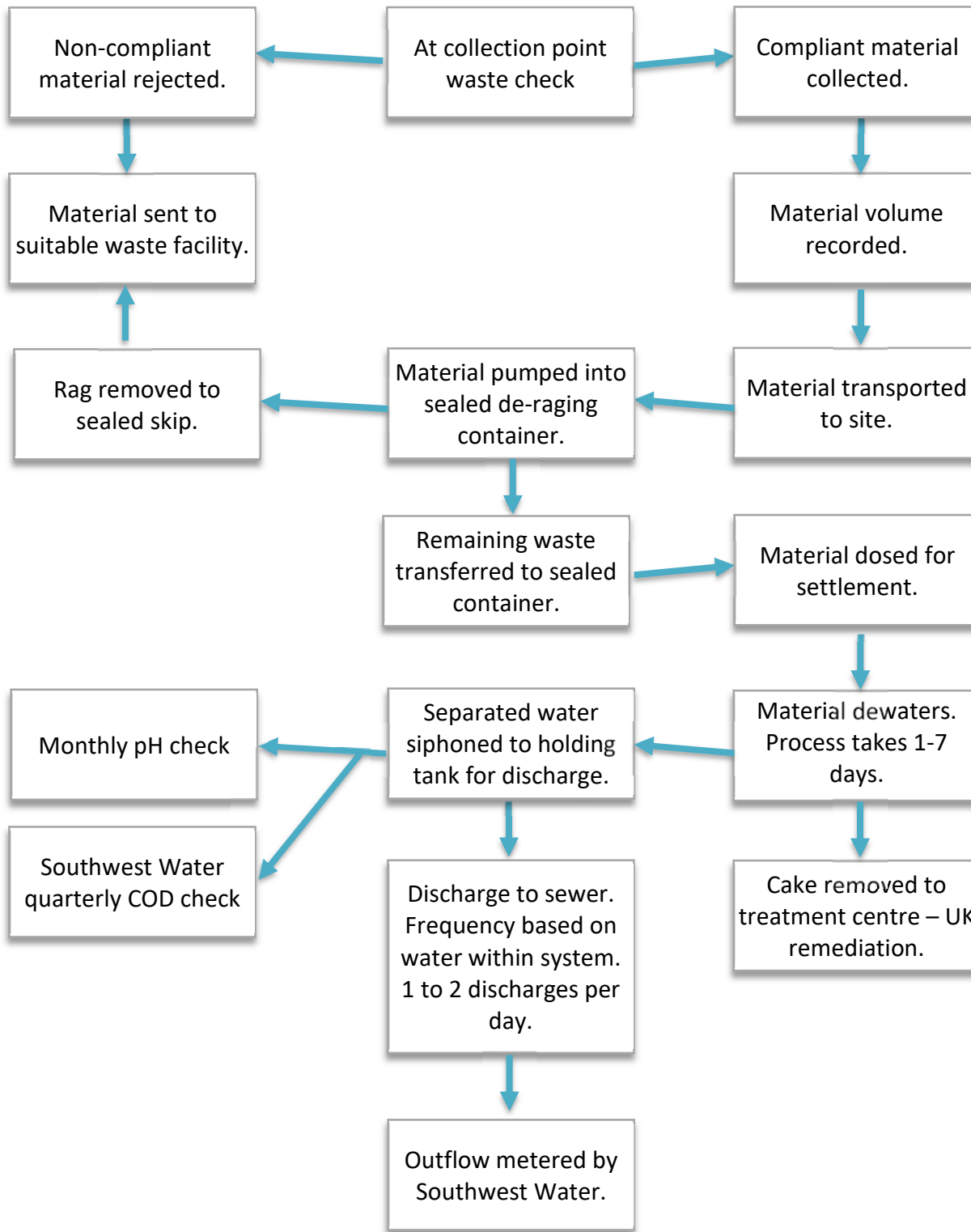


# 01.010.03.01 Process Flow Diagram

Uncontrolled when printed

Project name:	Galileo Depot (West Country Waste)	Project No:	01/010/03/01
Site/work location:	Galileo Close, Plympton, Plymouth PL7 4JW		



### Additional Notes



Material collected by liquid waste vehicle. Vehicle checked daily using "reflow" app. See copy of daily vehicle check 01.010.003.01\_VC Normal operations will have no more than 2 tankers per day.



Material pumped into sealed container. No air exposure eliminates odour control issue. Dewatering occurs within the tank; solid cake is left in the container whilst fluids discharge to a holding tank.



To transfer cake to treatment centre the sealed container is removed by hook lorry and transported to the centre, sealed and unopened. No air exposure eliminates odour control issue. An empty sealed container is placed in the location of the removed sealed container.

Non-compliant material is not collected and therefore will never arrive on site.

All waste is held, transferred and treated within a sealed system to eliminate odour. Odours gases are discharged into the sewer system.