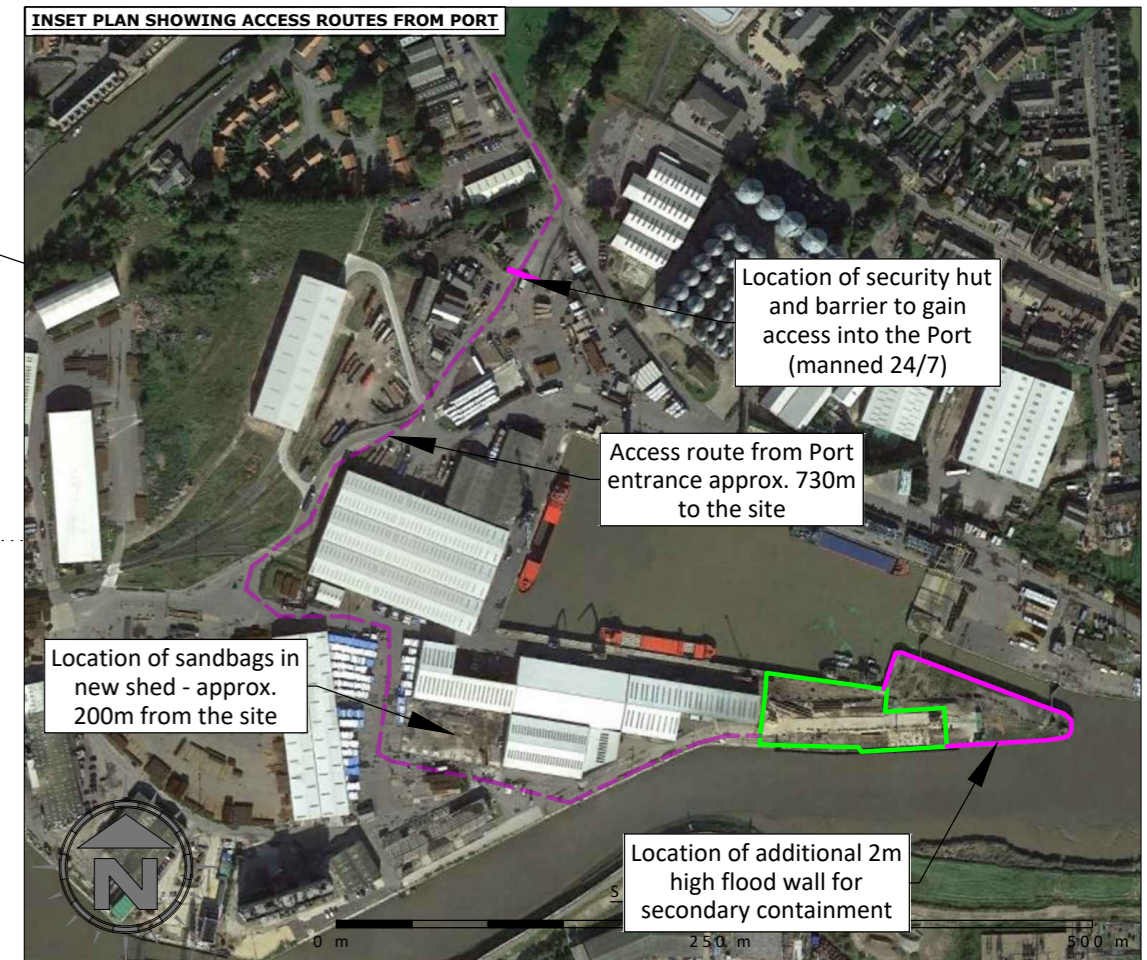
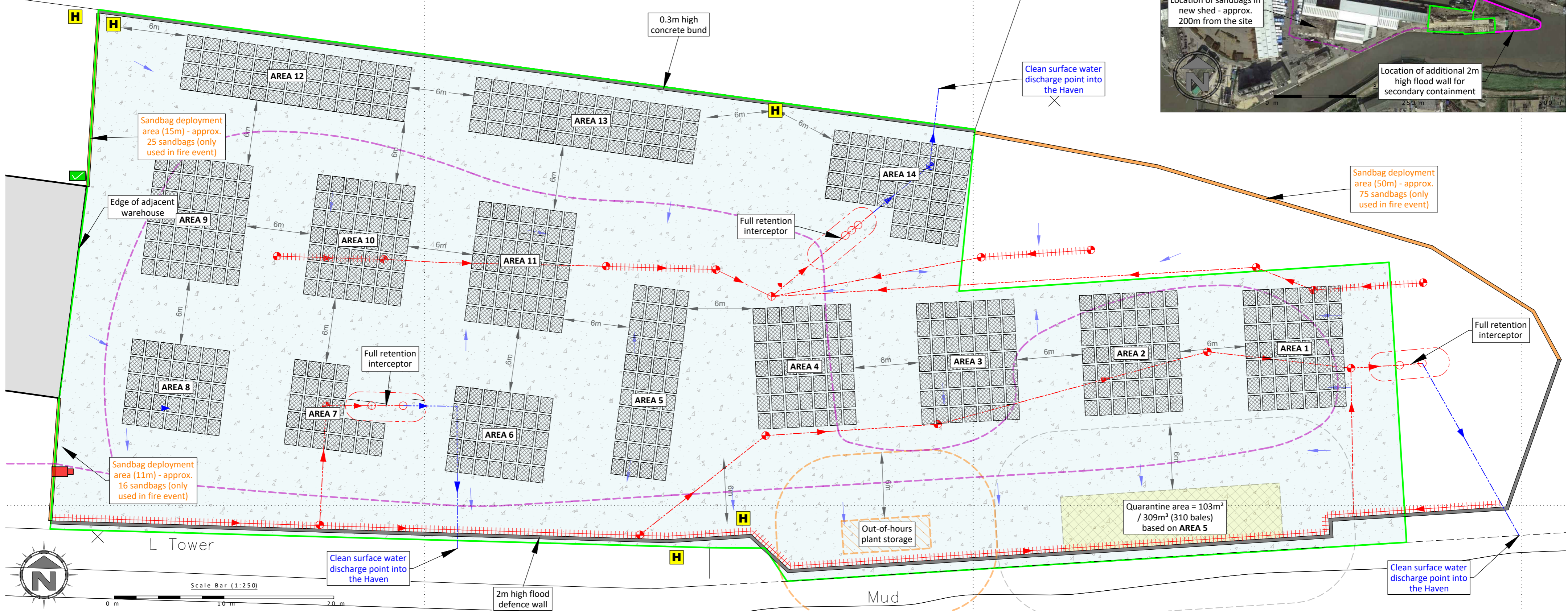


Plan Ref	Description	Storage type	Containment / type	Height of firewall (m)	Max Width (m)	Max Length (m)	Max storage height (m)	Approx. Area (m ²)	Conversion factor used	Approx. volume (m ³)	Approx. no. of bales	Approx. tonnage	Max storage time
AREA 1	Storage of RDF/SDF bales	Bale stack (four high)	Free-standing bale stack	N/A	9	11	4.4	99	1	436	196	274	<12 weeks
AREA 2	Storage of RDF/SDF bales	Bale stack (four high)	Free-standing bale stack	N/A	9	11	4.4	99	1	436	196	274	<12 weeks
AREA 3	Storage of RDF/SDF bales	Bale stack (four high)	Free-standing bale stack	N/A	9	11	4.4	99	1	436	196	274	<12 weeks
AREA 4	Storage of RDF/SDF bales	Bale stack (four high)	Free-standing bale stack	N/A	9	11	4.4	99	1	436	196	274	<12 weeks
AREA 5	Storage of RDF/SDF bales	Bale stack (four high)	Free-standing bale stack	N/A	5	20	4.4	100	1	440	208	291	<12 weeks
AREA 6	Storage of RDF/SDF bales	Bale stack (four high)	Free-standing bale stack	N/A	9	8	4.4	72	1	317	140	196	<12 weeks
AREA 7	Storage of RDF/SDF bales	Bale stack (four high)	Free-standing bale stack	N/A	8	9	4.4	72	1	317	104	146	<12 weeks
AREA 8	Storage of RDF/SDF bales	Bale stack (four high)	Free-standing bale stack	N/A	9	8	4.4	72	1	317	140	196	<12 weeks
AREA 9	Storage of RDF/SDF bales	Bale stack (four high)	Free-standing bale stack	N/A	9	11	4.4	99	1	436	196	274	<12 weeks
AREA 10	Storage of RDF/SDF bales	Bale stack (four high)	Free-standing bale stack	N/A	9	11	4.4	99	1	436	196	274	<12 weeks
AREA 11	Storage of RDF/SDF bales	Bale stack (four high)	Free-standing bale stack	N/A	9	11	4.4	99	1	436	196	274	<12 weeks
AREA 12	Storage of RDF/SDF bales	Bale stack (four high)	Free-standing bale stack	N/A	5	20	4.4	100	1	440	208	291	<12 weeks
AREA 13	Storage of RDF/SDF bales	Bale stack (four high)	Free-standing bale stack	N/A	5	20	4.4	100	1	440	208	291	<12 weeks
AREA 14	Storage of RDF/SDF bales	Bale stack (four high)	Free-standing bale stack	N/A	9	12.6	4.4	95	1	418	192	269	<12 weeks

Conversion factors
 Conversion factors for waste piles are worked out using the following methods set out by The Environment Agency
 The maximum length width pile is based on the largest dimension – the volume of the pile has been calculated using the area x height x relevant conversion factor
 Conversion of 1 for materials stored as waste/bale stacks
 Each bale measures 1.1m (W) x 1.4m (L) and 1.1m (H), 1.54m² / 1.694m³



Oaktree Environmental Ltd
 Waste, Planning and Environmental Consultants

Lime House, Road Two, Winsford, Cheshire, CW7 3QZ
 t: 01606 558833 | e: sales@oaktree-environmental.co.uk

DRAWING TITLE
 SITE LAYOUT & FIRE PLAN

CLIENT
 Port of Boston Limited

PROJECT/SITE
 Port of Boston, St John's Road, Boston, Lincolnshire
 PE21 6BN

SCALE @ A2
 1:250

CLIENT NO
 3401

JOB NO
 001

DRAWING NUMBER
 POB/3401/03

REV
 -

STATUS
 Issued

DRAWN BY
 CP

CHECKED
 --

DATE
 27.02.24

- Key:**
- Permit boundary
 - Waste storage areas
 - Quarantine area
 - Impermeable concrete surface with sealed drainage
 - Surface water drainage fall direction
 - ACO / surface water drains & direction
 - Potentially contaminated surface water underground drainage
 - Clean/treated water
 - Catchment pits
 - Manholes (contaminated and clean)

- Out-of-hours plant storage
- H Location of fire hydrants
- ✓ Fire assembly point
- Sandbag (fire water containment) location
- Access route for emergency services
- 0.3m high concrete bund 2wall and 2m high flood barrier locations

NOTES
 Drawing for indication only. Reproduced with the permission of the controller of H.M.S.O. Crown copyright licence No. 100022432. This drawing is copyright and property of Oaktree Environmental Ltd.

REVISION HISTORY			
Rev:	Date:	Init:	Description:
-	28.02.24	CP	Initial drawing