

WET WOODLAND SCRUB (Plant in single species groups)	SIZE	TYPE	PLANTING CENTRES
40 % Alnus glutinosa (Black Alder)	80-100 cm	Transplant seed raised	1.75 m
15 % Betula pubescens (Birch) (plant in other areas)	60-100 cm	Transplant seed raised	1.75 m
15 % Salix Caprea (Goat Willow)	60-100 cm	Cutting	1.75 m
30 % Salix Cinerea (Grey Willow)	60-100 cm	Cutting	1.75 m

WOODLAND (Plant in groups of 5-6)	SIZE	TYPE	PLANTING CENTRES
15 % Alnus glutinosa (Black Alder)	80-100 cm	Transplant seed raised	2.00 m
15 % Betula pubescens (Birch)	60-100 cm	Transplant seed raised	2.00 m
30 % Sorbus aucuparia (Mountain Ash)	80-100 cm	Transplant seed raised	2.00 m
20 % Quercus petraea (Oak)	60-80 cm	Transplant seed raised	2.00 m
15 % Crataegus monogyna (Hawthorn) (plant to edge in groups of 6 min.)	40-60 cm	Baneroot, branched	2.00 m
5 % Ilex aquifolium (Holly) (plant to edge in groups of 3)	40-60 cm	2L container	2.00 m

BANK SCRUB/TREES	SIZE	TYPE	PLANTING CENTRES
15 % Crataegus monogyna (Hawthorn) (plant to edge in groups of 6 min.)	40-60 cm	Baneroot, branched	1.50 m
20 % Sorbus aucuparia (Mountain Ash)	60-80 cm	Transplant seed raised	1.50 m
20 % Sorbus aucuparia (Mountain Ash)	60-80 cm	Transplant seed raised	1.50 m
20 % Betula pubescens (Birch)	40-60 cm	Transplant seed raised	1.50 m
15% Ilex aquifolium (Holly) (plant to edge in groups of 6 min.)	30-40 cm	2L container, bushy	1.50 m

INDIVIDUAL TREES	SIZE	TYPE	PLANTING CENTRES
Sorbus aucuparia (Mountain Ash)	175-200 cm	Feathered, 5 branches min.	As shown
Quercus petraea (Oak)	175-200 cm	Feathered, 5 branches min.	As shown

SPECIFICATION NOTES
Soil sampling: Existing topsoil shall be analysed to determine pH value and adjusted as necessary. Plants are selected for local acid to neutral soil conditions.

Cultivation of areas to be planted: Proposed woodland planting areas (excluding marsh land and steep banks) to be inspected for signs of compaction. If area is compacted and not free draining, line up to 600mm depth at 900mm centres. Deep plough to a depth of 300mm and harrow to a medium till prior to excavating planting pits.

Tree/shrub pit sizes: Excavate tree and shrub pits (approx. 300x300x300mm) to a depth and width sufficient to accommodate full root spread or root ball plus 100mm beyond the root spread. Break up sides and bottom of pits to a depth of 150mm to ensure free drainage. Backfill with existing soil, broken up to a medium till. Remove any non-soil material and roots of persistent perennial weeds.

Feathered tree pits: Excavate tree pit as above and at least 800mm x 800mm x 600mm deep. Backfill with existing soil mixed with a proprietary tree and shrub planting compost at a rate of 5-part soil to 1-part compost.

Planting: Minimise trafficking of prepared areas. Bare root trees and shrubs to be planted between November - March. Nursery stock trees and shrubs to conform to BS3336, to be supplied and planted in accordance with British Standards and the Horticultural Association's Plant Handling Guide. All plant material and grass seed must be to UK native grown stock of local provenance and grown on in the UK. As far as possible, the provenance of plant stock should be from the Manchester region 300 defined by the Forestry Commission Provenance Map at an elevation above 300 metres. Where plants from the relevant zone are not available then material from an adjacent zone and the same elevation should be sourced. Container grown shrubs to be thoroughly watered before planting, trees and bare root shrubs watered after planting.

Tree stakes and rabbit guards: Feathered trees to be staked with a single 1.4m long 20mm diameter treated larch or softwood tree stake. All stakes to be 600mm maximum above ground level tied to the tree with proprietary rubber tie and spacer. Trees to be protected with appropriate brown, black or translucent plastic spiral to a height of 600mm minimum.

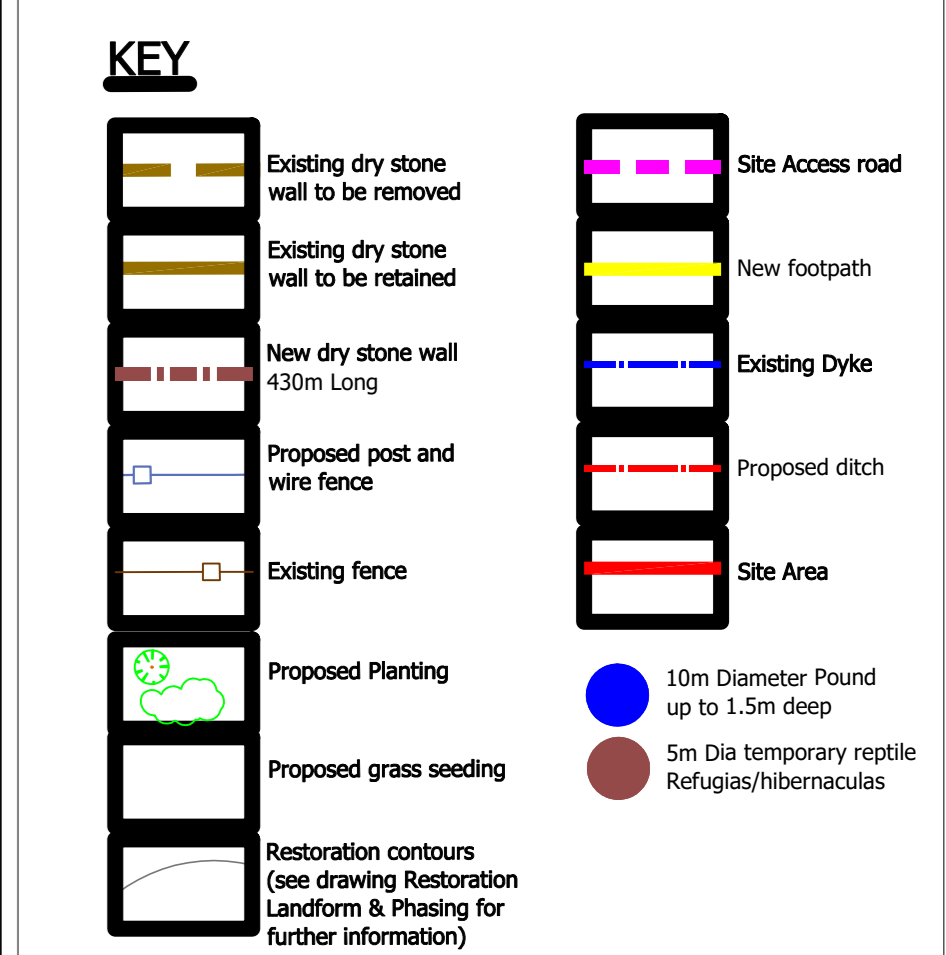
Tree shelters - All woodland transplants (excluding those on a steep bank) to be protected using Tube shelters: "Scoopit" 57-73mm dia x 750mm high or equivalent approved green or brown translucent polypropylene tubes attached to 25mm square stake. Holly to be protected with equisetum shrub shelter.

Rabbit guards to transplants on bank: Individual plants on the steep bank to the south to be protected with clear plastic spirals, 50mm dia x 600mm high with internal bamboo cane 12-14mm dia x 90cm high, driven into ground 300mm.

Mulch: All woodland transplants (excluding wet woodland scrub and bank scrub/trees) and feathered trees to be mulched with an 800mm x 800mm x 400mm x 75mm layer of well-rotted farmyard manure over each plant station.

Stock proof fence - To be existing post and wire mesh fence or 1.15m high timber post and wire mesh fence with 1 row barbed wire or line wire to BS 1722 part 2. Fence and mesh to be sheep, cattle and lamb proof. Mesh to extend to at least 1m high. Mesh to be medium weight galvanneal or "Galfer" coated 7 horizontal line wire with vertical strands at 150mm centres. Posts to be 25mm dia at 2.7m centres with straining and corner posts at 150mm dia at 50m intervals and all changes of direction. Struts to straining posts to be 50mm dia. Intermediate posts to be driven to a depth of not less than 600mm, straining posts to be set in holes 450mm square x 750mm deep (not less than 5% with concrete).

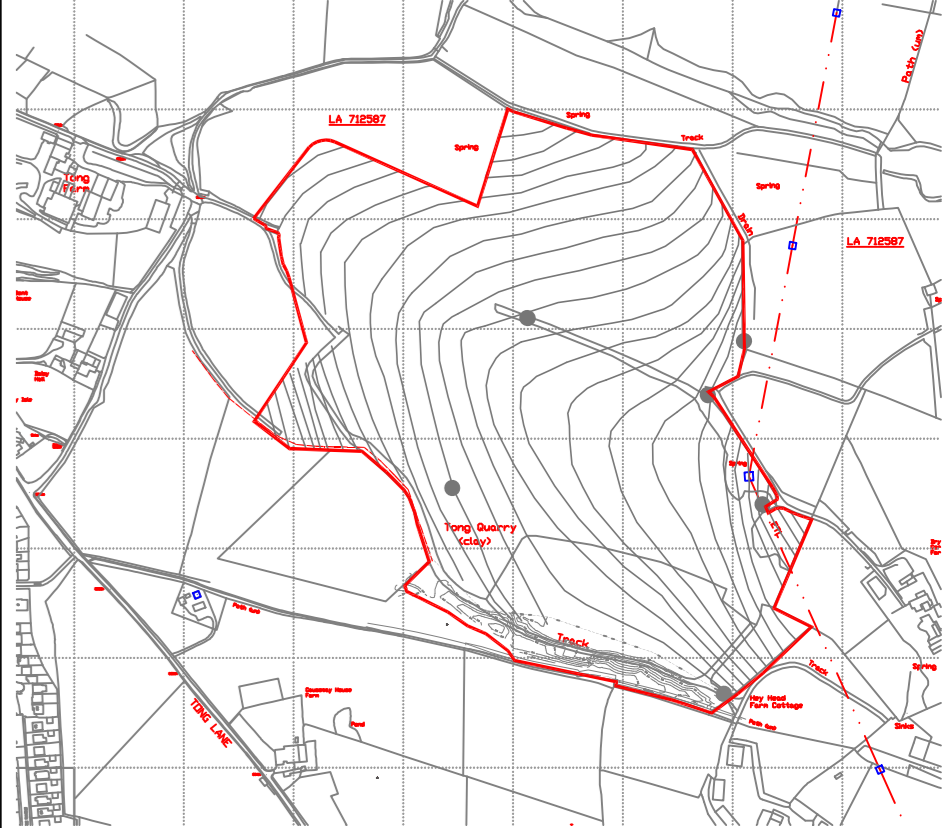
Maintenance - 1 year Defects Liability applies. All dead or falling plants to be replaced the following growing season. For first 5-year establishment period maintain a weed free bare earth area 600mm dia minimum around individual woodland trees and shrubs. Herbicide shall be non-residual translocated and applied close to ground level with spray guard at approval of EA as required. Prior to spraying ensure all sprays are light to ground level and leaves within spray range are fully enclosed. Do not spray when there is wind.



LANDSCAPE STRATEGY FOR EXTENSION LIKE-FOR-LIKE VEGETATION WITH ADDITIONAL ENHANCEMENTS (POUNDS & NEW TREE'S)

LANDSCAPE STRATEGY FOR EXISTING QUARRY PROPOSED WOODLAND AND SCRUB LINKS INTO EXISTING "ADVANCE" WOODLAND TO BE ENHANCE NATURE CONSERVATION AND EXTEND WILDLIFE CORRIDOR WHILST REFLECTING LOCAL LANDSCAPE CHARACTER OF WOODED CLOUGHS AND VALLEY SLOPES WITH LARGE SCALE PASTURES ON UPPER HILLSIDE

- Existing Quarry Restoration Already Agreed Coving Area's 1 to 4A By LCC
- This Application is for Extension Area's E1 & E2. This jls Currently Short Ward Farm Grass. No Tree's Or Other Vegetation This Is Being Restored Like-For-Like Plus Some Ecological (Pounds & Tree's)



Fox Brothers (Bacup) Ltd
Tong Quarry,
Tong Lane,
Bacup,
Lancashire,
OL13 9XA