

**Screening Results for:** Bespoke Environmental Permit - Waste Operations, including inert landfills and non-landfill SWMAs

**Date Produced:** 13/06/2023

**Reference number:** EPR/KB3609CR/A001




**NGR of search:** SP 83469 62157

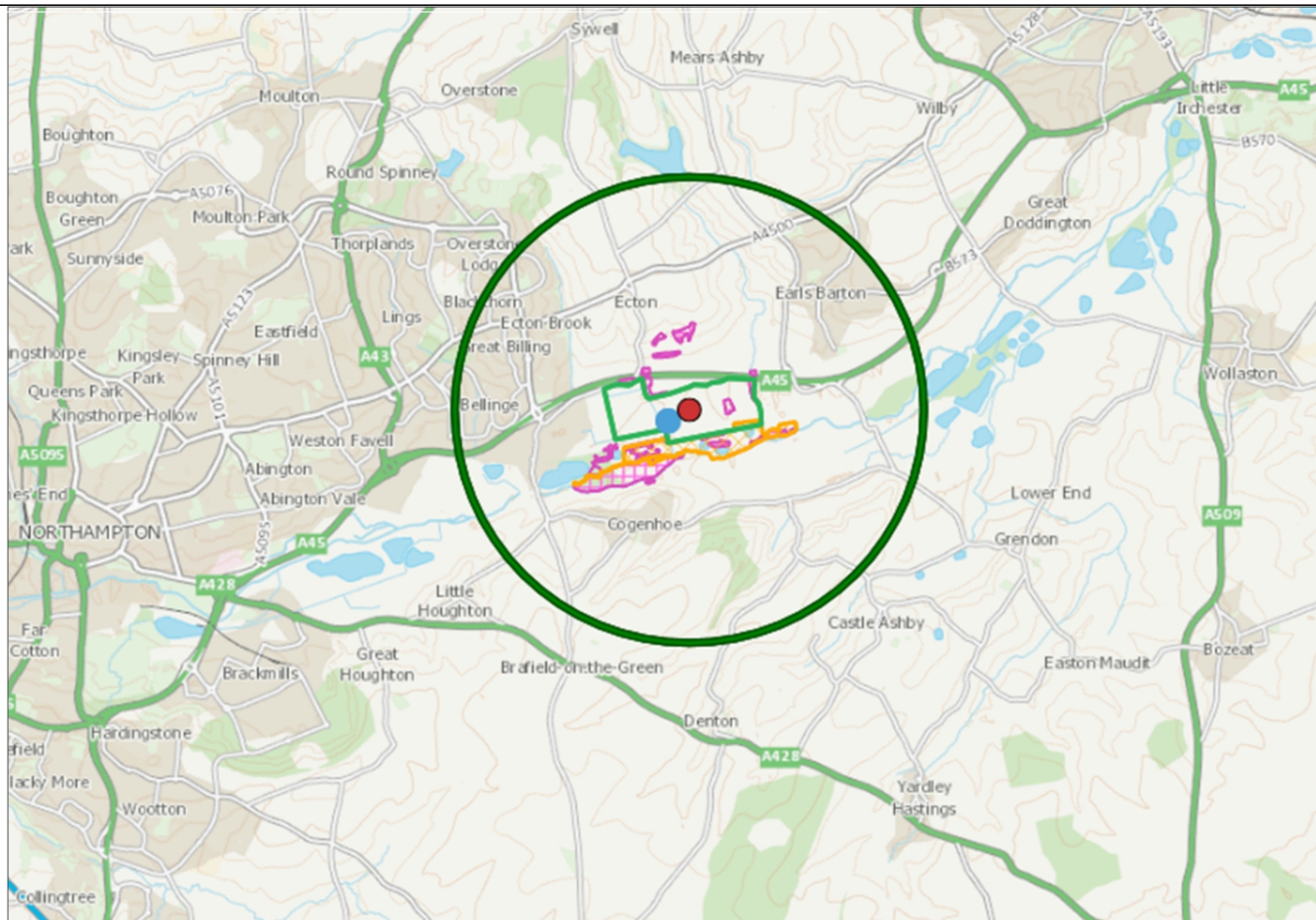
**Notes:**

**Site centre distance (m):** 1100



### Legend

-  Search area
-  Local Wildlife Sites
-  Protected Habitats screened for Environ Permits



[Launch EasiMap](#)

© Crown Copyright and database right 2023. Ordnance Survey licence number 100024198. Copyright © Natural England. © Crown Copyright. All rights reserved. Countryside Council for Wales, 100018813, 2023. © Environment Agency copyright and / or database rights 2023. All rights reserved. © Copyright English Heritage. © The National Assembly for Wales.

# Easimap Screening Results

[Click here to download Permit Screening distances](#)

**Screening Results for:** Bespoke Environmental Permit - Waste Operations, including inert landfills and non-landfill SWMAs  
**Reference number:** EPR/KB3609CR/A001  
**Notes:**

**Date produced:** 13/06/2023  
**NGR of search:** SP 83469 62157  
**Site centre distance (m):** 1100

| Data                                                                                  | Details                                                                                                                                                                          | Within | Search Direction | Action                                                                                                                                                                                                                                                                                                                                                                                                                                                                                       |
|---------------------------------------------------------------------------------------|----------------------------------------------------------------------------------------------------------------------------------------------------------------------------------|--------|------------------|----------------------------------------------------------------------------------------------------------------------------------------------------------------------------------------------------------------------------------------------------------------------------------------------------------------------------------------------------------------------------------------------------------------------------------------------------------------------------------------------|
| Protected Habitats - Deciduous woodland                                               | Level of Protection: Natural Environment and Rural Communities Act (2006)<br>Section 41 habitats of principal importance                                                         | 712m   | Radial           | Check data restrictions. More info from F&B                                                                                                                                                                                                                                                                                                                                                                                                                                                  |
|                                                                                       | Level of Protection: Natural Environment and Rural Communities Act (2006)<br>Section 41 habitats of principal importance                                                         | 359m   | Radial           |                                                                                                                                                                                                                                                                                                                                                                                                                                                                                              |
| Protected Habitats - Coastal and Floodplain Grazing Marsh                             | Level of Protection: Natural Environment and Rural Communities Act (2006)<br>Section 41 habitats of principal importance                                                         | 576m   | Radial           | Check data restrictions. More info from F&B                                                                                                                                                                                                                                                                                                                                                                                                                                                  |
| Protected Species - Brown/Sea Trout<br>Salmo trutta                                   | Level of Protection:<br>RedList_Global_post2001_LC;<br>BAP-<br>2007;England_NERC_S.41;<br>Scottish_Biodiversity_List;Env (Wales) Act<br>S7;NI_Priority;SAFFA                     | 678m   | Radial           | Check data restrictions. Habitat: Well-oxygenated streams, rivers, lakes. Hazards: Changes in water level/flow, chemistry, temperature; nutrient enrichment; acidification; siltation/smothering; sand/gravel extraction; migration barriers; watercourse modification; disease (aquaculture). More info from F&B.<br>{ <a href="http://ams.ea.gov/ams_root/2011/651_700/695_11.pdf#page=17">http://ams.ea.gov/ams_root/2011/651_700/695_11.pdf#page=17</a> }                                |
| Protected Species - European eel<br>Anguilla anguilla                                 | Level of Protection:<br>OSPAR;<br>RedList_Global_post2001-CR;<br>BAP-<br>2007;England_NERC_S.41;<br>Scottish_Biodiversity_List;Env (Wales) Act<br>S7;NI_Priority;Eels Regs;SAFFA | 618m   | Radial           | Check data restrictions. Habitat: Estuaries, rivers, streams, canals, ditches/drains, lakes. Hazards: Changes in water level/flow/chemistry; nutrient enrichment; migration barriers (up and downstream); entrapment; physical damage (hydropower turbines); introduction of disease; watercourse modification; exploitation. More info from F&B.<br>{ <a href="http://ams.ea.gov/ams_root/2011/651_700/695_11.pdf#page=27">http://ams.ea.gov/ams_root/2011/651_700/695_11.pdf#page=27</a> } |
|                                                                                       | Level of Protection:<br>OSPAR;<br>RedList_Global_post2001-CR;<br>BAP-<br>2007;England_NERC_S.41;<br>Scottish_Biodiversity_List;Env (Wales) Act<br>S7;NI_Priority;Eels Regs;SAFFA | 521m   | Radial           |                                                                                                                                                                                                                                                                                                                                                                                                                                                                                              |
|                                                                                       | Level of Protection:<br>OSPAR;<br>RedList_Global_post2001-CR;<br>BAP-<br>2007;England_NERC_S.41;<br>Scottish_Biodiversity_List;Env (Wales) Act<br>S7;NI_Priority;Eels Regs;SAFFA | 529m   | Radial           |                                                                                                                                                                                                                                                                                                                                                                                                                                                                                              |
| Protected Species - European Eel migratory route<br>Anguilla anguilla migratory route | Level of Protection:<br>OSPAR;<br>RedList_Global_post2001-CR;<br>BAP-<br>2007;England_NERC_S.41;<br>Scottish_Biodiversity_List;Env (Wales) Act<br>S7;NI_Priority;Eels Regs;SAFFA | 529m   | Radial           | Check data restrictions. Habitat: Estuaries, rivers, streams, canals, ditches/drains, lakes. Hazards: Changes in water level/flow/chemistry; nutrient enrichment; migration barriers (up and downstream); entrapment; physical damage (hydropower turbines); introduction of disease; watercourse modification; exploitation. More info from F&B.<br>{ <a href="http://ams.ea.gov/ams_root/2011/651_700/695_11.pdf#page=27">http://ams.ea.gov/ams_root/2011/651_700/695_11.pdf#page=27</a> } |
| Protected Species - Bullhead Cottus gobio                                             | Level of Protection: HabDir-A2*;SAFFA                                                                                                                                            | 618m   | Radial           | Check data restrictions. Habitat: Streams, rivers, lakes; require hard stony substrates. Hazards: Changes in water level/flow/chemistry; nutrient enrichment; barriers to up/downstream passage; siltation/smothering; sand/gravel extraction; watercourse modification; aquatic/bank vegetation management; non-native species (competition/predation); aquaculture. More info from F&B                                                                                                     |

# Easimap Screening Results

[Click here to download Permit Screening distances](#)

**Screening Results for:**

Bespoke Environmental Permit - Waste Operations, including inert landfills and non-landfill SWMAs

**Reference number:**

EPR/KB3609CR/A001

**Notes:**

**Date produced:**

13/06/2023

**NGR of search:**

SP 83469 62157

**Site centre distance (m):**

1100

| Data                                                              | Details                                                                                                                                                                           | Within | Search Direction | Action                                                                                                                                                                                                                                                                                                                                                                                                                                                     |
|-------------------------------------------------------------------|-----------------------------------------------------------------------------------------------------------------------------------------------------------------------------------|--------|------------------|------------------------------------------------------------------------------------------------------------------------------------------------------------------------------------------------------------------------------------------------------------------------------------------------------------------------------------------------------------------------------------------------------------------------------------------------------------|
|                                                                   | Level of Protection: HabDir-A2*;SAFFA                                                                                                                                             | 521m   | Radial           | More info from F&B.<br>{http://ams.ea.gov/ams_root/2011/651_700/695_11.pdf#page=61}                                                                                                                                                                                                                                                                                                                                                                        |
| Protected Species - Spined Loach <i>Cobitis taenia</i>            | Level of Protection: Bern-A3; HabDir-A2*;RedList_Global_post2001_LC; BAP-2007;England_NERC_S.41;SAFFA                                                                             | 521m   | Radial           | Check data restrictions. Habitat: Slow flowing rivers and streams, canals, ditches/drains, lakes. Hazards: Changes in water level/flow/chemistry; nutrient enrichment; siltation; sand/gravel extraction; watercourse modification; dredging; aquatic vegetation management; competition (introduced fish species). More info from F&B.<br>{http://ams.ea.gov/ams_root/2011/651_700/695_11.pdf#page=61}                                                    |
|                                                                   | Level of Protection: Bern-A3; HabDir-A2*;RedList_Global_post2001_LC; BAP-2007;England_NERC_S.41;SAFFA                                                                             | 678m   | Radial           |                                                                                                                                                                                                                                                                                                                                                                                                                                                            |
| Protected Species - European Water Vole <i>Arvicola amphibius</i> | Level of Protection: RedList_GB_post2001-EN; BAP-2007;England_NERC_S.41; Scottish_Biodiversity_List;Env (Wales) Act S7;WACA-Sch5_sect9.4.a, WACA-Sch5_sect9.4b, WACA-Sch5Sect9.4c | 495m   | Radial           | Check data restrictions. Habitat: Vegetated banks of slow flowing rivers, ditches, lakes and marshes where water is present throughout the year. Hazards: Habitat loss and fragmentation; Physical damage; Disturbance (riverbank modification, drainage and flood defence works, infrastructure development); Toxic contamination (rodenticides); predation (Mink). More info from F & B.<br>{http://ams.ea.gov/ams_root/2011/651_700/695_11.pdf#page=69} |
|                                                                   | Level of Protection: RedList_GB_post2001-EN; BAP-2007;England_NERC_S.41; Scottish_Biodiversity_List;Env (Wales) Act S7;WACA-Sch5_sect9.4.a, WACA-Sch5_sect9.4b, WACA-Sch5Sect9.4c | 919m   | Radial           |                                                                                                                                                                                                                                                                                                                                                                                                                                                            |
| Local Wildlife Sites                                              | Name: Ecton Backwater                                                                                                                                                             | 559m   | Radial           | Take account of the requirements of this site. If there is no data available consult Area                                                                                                                                                                                                                                                                                                                                                                  |
|                                                                   | Name: Ecton Gravel Pits                                                                                                                                                           | 381m   | Radial           |                                                                                                                                                                                                                                                                                                                                                                                                                                                            |
| Aquifer Designation (Bedrock)                                     | Aquifer type: Unproductive                                                                                                                                                        | 985m   | Radial           |                                                                                                                                                                                                                                                                                                                                                                                                                                                            |
|                                                                   | Aquifer type: Unproductive                                                                                                                                                        | 0m     | Radial           |                                                                                                                                                                                                                                                                                                                                                                                                                                                            |
| Aquifer Designation (Superficial)                                 | Aquifer type: Secondary A                                                                                                                                                         | 939m   | Radial           |                                                                                                                                                                                                                                                                                                                                                                                                                                                            |
|                                                                   | Aquifer type: Secondary A                                                                                                                                                         | 0m     | Radial           |                                                                                                                                                                                                                                                                                                                                                                                                                                                            |
|                                                                   | Aquifer type: Unproductive                                                                                                                                                        | 1063m  | Radial           |                                                                                                                                                                                                                                                                                                                                                                                                                                                            |
|                                                                   | Aquifer type: Secondary A                                                                                                                                                         | 987m   | Radial           |                                                                                                                                                                                                                                                                                                                                                                                                                                                            |

# Easimap Screening Results

[Click here to download Permit Screening distances](#)

**Screening Results for:** Bespoke Environmental Permit - Waste Operations, including inert landfills and non-landfill SWMAs  
**Reference number:** EPR/KB3609CR/A001  
**Notes:**

**Date produced:** 13/06/2023  
**NGR of search:** SP 83469 62157  
**Site centre distance (m):** 1100

| Data                                    | Details                                          | Within | Search Direction | Action                                        |
|-----------------------------------------|--------------------------------------------------|--------|------------------|-----------------------------------------------|
|                                         | Aquifer type: Unproductive                       | 962m   | Radial           |                                               |
| EPR Installation Team                   | EPR Team: Installations South                    | 0m     | Radial           |                                               |
| EPR Waste Team                          | EPR Team: Waste South                            | 0m     | Radial           |                                               |
| EPR Land and Water Team                 | EPR Team: Land and Water North and South Env Mgt | 0m     | Radial           |                                               |
| Local Authorities                       | Name: Unknown                                    | 0m     | Radial           |                                               |
|                                         | Name: Unknown                                    | 531m   | Radial           |                                               |
| EA Water Management Areas               | Area name: Lincolnshire and Northamptonshire     | 0m     | Radial           |                                               |
| Historic Landfill Sites                 | no information                                   | 2526m  | Radial           | Check for the presence of a historic landfill |
|                                         | no information                                   | 421m   | Radial           |                                               |
| Flood Zone 3                            | Flood Zone 3                                     | 43m    | Radial           | Within flood risk area                        |
| Flood Zone 2                            | Flood Zone 2                                     | 0m     | Radial           | Within flood risk area                        |
|                                         | Flood Zone 2                                     | 436m   | Radial           |                                               |
| Ancient Woodland - England              | None present                                     | 200m   |                  |                                               |
| Ancient Woodland - Wales                | None present                                     | 200m   |                  |                                               |
| Authorised Landfill Sites               | None present                                     | 2000m  |                  |                                               |
| Local Nature Reserves - England         | None present                                     | 200m   |                  |                                               |
| Local Nature Reserves - Wales           | None present                                     | 200m   |                  |                                               |
| Marine Conservation Zones               | None present                                     | 1000m  |                  |                                               |
| National Nature Reserves - England      | None present                                     | 200m   |                  |                                               |
| National Nature Reserves - Wales        | None present                                     | 200m   |                  |                                               |
| Counties                                | None present                                     | 0m     |                  |                                               |
| Protected Habitats - Upland Heathland   | None present                                     | 50m    |                  |                                               |
| Protected Habitats - Wet Woodland       | None present                                     | 50m    |                  |                                               |
| Protected Habitats - Coastal Saltmarsh  | None present                                     | 50m    |                  |                                               |
| Protected Habitats - Upland Hay Meadows | None present                                     | 50m    |                  |                                               |

# Easimap Screening Results

[Click here to download Permit Screening distances](#)

**Screening Results for:** Bespoke Environmental Permit - Waste Operations, including inert landfills and non-landfill SWMAs  
**Reference number:** EPR/KB3609CR/A001  
**Notes:**

**Date produced:** 13/06/2023  
**NGR of search:** SP 83469 62157  
**Site centre distance (m):** 1100

| Data                                                                        | Details      | Within | Search Direction | Action |
|-----------------------------------------------------------------------------|--------------|--------|------------------|--------|
| Protected Habitats - Upland Calcareous grassland                            | None present | 50m    |                  |        |
| Protected Habitats - Lowland meadows                                        | None present | 50m    |                  |        |
| Protected Habitats - Lowland Heathland                                      | None present | 50m    |                  |        |
| Protected Habitats - Lowland dry acid grassland                             | None present | 50m    |                  |        |
| Protected Habitats - Lowland Calcareous grassland                           | None present | 50m    |                  |        |
| Protected Habitats - Intertidal mudflats                                    | None present | 0m     |                  |        |
| Protected Habitats - Aquifer fed water bodies                               | None present | 50m    |                  |        |
| Protected Habitats - Chalk rivers                                           | None present | 50m    |                  |        |
| Protected Habitats - Saline lagoons                                         | None present | 50m    |                  |        |
| Protected Habitats - Purple moor grass and Rush Pasture                     | None present | 50m    |                  |        |
| Protected Habitats - Maritime Cliff and Slope                               | None present | 0m     |                  |        |
| Protected Habitats - Fens                                                   | None present | 50m    |                  |        |
| Protected Habitats - Coastal vegetated shingle                              | None present | 0m     |                  |        |
| Protected Habitats - Coastal sand dunes                                     | None present | 0m     |                  |        |
| Protected Habitats - Mudflats                                               | None present | 0m     |                  |        |
| Protected Habitats - Culm/Rhos pasture                                      | None present | 50m    |                  |        |
| Protected Habitats - Blanket Bog                                            | None present | 50m    |                  |        |
| Protected Habitats - Lowland Raised bog                                     | None present | 50m    |                  |        |
| Protected Habitats - Reedbeds                                               | None present | 50m    |                  |        |
| Protected Species - Sea Trout migratory route Salmo trutta migratory route  | None present | 500m   |                  |        |
| Protected Species - Smelt Osmerus eperlanus                                 | None present | 500m   |                  |        |
| Protected Species - Smelt migratory route Osmerus eperlanus migratory route | None present | 500m   |                  |        |
| Protected Species - Vendace Coregonus albula                                | None present | 500m   |                  |        |

# Easimap Screening Results

[Click here to download Permit Screening distances](#)

**Screening Results for:** Bespoke Environmental Permit - Waste Operations, including inert landfills and non-landfill SWMAs  
**Reference number:** EPR/KB3609CR/A001  
**Notes:**

**Date produced:** 13/06/2023  
**NGR of search:** SP 83469 62157  
**Site centre distance (m):** 1100

| Data                                                                                   | Details      | Within | Search Direction | Action |
|----------------------------------------------------------------------------------------|--------------|--------|------------------|--------|
| Protected Species - Powan Coregonus lavaretus                                          | None present | 500m   |                  |        |
| Protected Species - Atlantic Salmon Salmo salar                                        | None present | 500m   |                  |        |
| Protected Species - Atlantic Salmon migratory route Salmo salar migratory route        | None present | 500m   |                  |        |
| Protected Species - Unidentified Shad Alosa                                            | None present | 500m   |                  |        |
| Protected Species - Twaite Shad Alosa fallax                                           | None present | 500m   |                  |        |
| Protected Species - Twaite Shad migratory route Alosa fallax migratory route           | None present | 500m   |                  |        |
| Protected Species - Allis Shad Alosa alosa                                             | None present | 500m   |                  |        |
| Protected Species - Allis Shad migratory route Alosa alosa migratory route             | None present | 500m   |                  |        |
| Protected Species - Unidentified Shad migratory route Alosa migratory route            | None present | 500m   |                  |        |
| Protected Species - River Lamprey Lampetra fluviatilis                                 | None present | 500m   |                  |        |
| Protected species - Unidentified Lamprey Petromyzontidae                               | None present | 500m   |                  |        |
| Protected Species - River Lamprey migratory route Lampetra fluviatilis migratory route | None present | 500m   |                  |        |
| Protected Species - Brook Lamprey Lampetra planeri                                     | None present | 500m   |                  |        |
| Protected Species - Sea Lamprey Petromyzon marinus                                     | None present | 500m   |                  |        |
| Protected Species - Sea Lamprey migratory route Petromyzon marinus migratory route     | None present | 500m   |                  |        |
| Protected Species - Arctic Charr Salvelinus alpinus                                    | None present | 500m   |                  |        |
| Protected Species - Brown Diving Beetle Agabus brunneus                                | None present | 50m    |                  |        |
| Protected Species - One-grooved Diving Beetle Bidessus unistriatus                     | None present | 50m    |                  |        |
| Protected Species - Pale Pin-palp Bembidion testaceum                                  | None present | 50m    |                  |        |

# Easimap Screening Results

[Click here to download Permit Screening distances](#)

**Screening Results for:** Bespoke Environmental Permit - Waste Operations, including inert landfills and non-landfill SWMAs  
**Reference number:** EPR/KB3609CR/A001  
**Notes:**

**Date produced:** 13/06/2023  
**NGR of search:** SP 83469 62157  
**Site centre distance (m):** 1100

| Data                                                                                          | Details      | Within | Search Direction | Action |
|-----------------------------------------------------------------------------------------------|--------------|--------|------------------|--------|
| Protected Species - Gravel Water Beetle<br><i>Hydrochus nitidicollis</i>                      | None present | 50m    |                  |        |
| Protected Species - Shingle Rove Beetle<br><i>Meotica anglica</i>                             | None present | 50m    |                  |        |
| Protected Species - Newberys Rove Beetle<br><i>Thinobius newberyi</i>                         | None present | 50m    |                  |        |
| Protected Species - Depressed (or Compressed) River Mussel<br><i>Pseudanodonta complanata</i> | None present | 50m    |                  |        |
| Protected Species - Fine-lined Pea Mussel<br><i>Odhneripisidium tenuilineatum</i>             | None present | 50m    |                  |        |
| Protected Species - Greater Water-parsnip<br><i>Sium latifolium</i>                           | None present | 50m    |                  |        |
| Protected Species - Hairy Click Beetle<br><i>Synaptus filiformis</i>                          | None present | 50m    |                  |        |
| Protected Species - Lagoon Spire Snail<br><i>Semisalsa stagnorum</i>                          | None present | 50m    |                  |        |
| Protected Species - The Shining Rams-horn<br><i>Segmentina nitida</i>                         | None present | 50m    |                  |        |
| Protected Species - Slender Stonewort<br><i>Nitella gracilis</i>                              | None present | 50m    |                  |        |
| Protected Species - Stary Stonewort<br><i>Nitellopsis obtusa</i>                              | None present | 50m    |                  |        |
| Protected Species - Southern Silver-stiletto<br><i>Clorismia rustica</i>                      | None present | 50m    |                  |        |
| Protected Species - Tassel Stonewort<br><i>Tolypella intricata</i>                            | None present | 50m    |                  |        |
| Protected Species - Bembridge Beetle<br><i>Paracymus aeneus</i>                               | None present | 50m    |                  |        |
| Protected Species - Fairy Shrimp<br><i>Chirocephalus diaphanus</i>                            | None present | 0m     |                  |        |
| Protected Species - Fen Raft Spider<br><i>Dolomedes plantarius</i>                            | None present | 0m     |                  |        |
| Protected Species - Glutinous Snail<br><i>Myxas glutinosa</i>                                 | None present | 50m    |                  |        |
| Protected Species - Lesser Silver Water Beetle<br><i>Hydrochara caraboides</i>                | None present | 50m    |                  |        |
| Protected Species - Medicinal Leech<br><i>Hirudo medicinalis</i>                              | None present | 50m    |                  |        |
| Protected Species - Mire Pill Beetle<br><i>Curimopsis nigrita</i>                             | None present | 50m    |                  |        |

# Easimap Screening Results

[Click here to download Permit Screening distances](#)

**Screening Results for:** Bespoke Environmental Permit - Waste Operations, including inert landfills and non-landfill SWMAs  
**Reference number:** EPR/KB3609CR/A001  
**Notes:**

**Date produced:** 13/06/2023  
**NGR of search:** SP 83469 62157  
**Site centre distance (m):** 1100

| Data                                                                                                                 | Details      | Within | Search Direction | Action |
|----------------------------------------------------------------------------------------------------------------------|--------------|--------|------------------|--------|
| Protected Species - Threatened bryophyte record - WaC Act Schedule 8<br>Dendrocryphaea lamyana                       | None present | 50m    |                  |        |
| Protected Species - Ribbon-Leaved Water Plantain<br>Alisma gramineum                                                 | None present | 50m    |                  |        |
| Protected Species - Threatened lichen record - WaC Act Schedule 8<br>Collema dichotomum                              | None present | 50m    |                  |        |
| Protected Species - Spangled Diving Beetle<br>Graphoderus zonatus                                                    | None present | 0m     |                  |        |
| Protected Species - Tadpole Shrimp<br>Triops cancriformis                                                            | None present | 50m    |                  |        |
| Protected Species - Triangular Club-rush<br>Schoenoplectus triqueter                                                 | None present | 50m    |                  |        |
| Protected Species - Triangular Club-rush Hybrid<br>Schoenoplectus tabernaemontani x triqueter = S. x kuekenthalianus | None present | 50m    |                  |        |
| Protected Species - Water Germander<br>Teucrium scordium                                                             | None present | 50m    |                  |        |
| Protected Species - Sand Lizard<br>Lacerta agilis                                                                    | None present | 50m    |                  |        |
| Protected Species - Natterjack Toad<br>Epidalea calamita                                                             | None present | 50m    |                  |        |
| Protected Species - Code 4                                                                                           | None present | 50m    |                  |        |
| Protected Species - Creeping Marshwort<br>Apium repens                                                               | None present | 50m    |                  |        |
| Protected Species - Code 2                                                                                           | None present | 250m   |                  |        |
| Protected Species - Marsh Fritillary<br>Euphydryas aurinia                                                           | None present | 50m    |                  |        |
| Protected Species - White-clawed Freshwater Crayfish<br>Austropotamobius pallipes                                    | None present | 50m    |                  |        |
| Protected Species - Southern Damselfly<br>Coenagrion mercuriale                                                      | None present | 50m    |                  |        |
| Protected Species - Desmoulins Whorl Snail<br>Vertigo (Vertigo) moulinsiana                                          | None present | 50m    |                  |        |
| Protected Species - Narrow-mouthed Whorl Snail<br>Vertigo (Vertilla) angustior                                       | None present | 50m    |                  |        |
| Protected Species - Geyers Whorl Snail<br>Vertigo (Vertigo) geyeri                                                   | None present | 50m    |                  |        |



# Easimap Screening Results

[Click here to download Permit Screening distances](#)

**Screening Results for:** Bespoke Environmental Permit - Waste Operations, including inert landfills and non-landfill SWMAs  
**Reference number:** EPR/KB3609CR/A001  
**Notes:**

**Date produced:** 13/06/2023  
**NGR of search:** SP 83469 62157  
**Site centre distance (m):** 1100

| Data                                                                                         | Details      | Within | Search Direction | Action |
|----------------------------------------------------------------------------------------------|--------------|--------|------------------|--------|
| Protected Species - Little Whirlpool Rams-horn Snail Anisus (Disculifer) vorticulus          | None present | 50m    |                  |        |
| Protected Species - Floating Water-plantain Luronium natans                                  | None present | 50m    |                  |        |
| Protected Species - Code 3                                                                   | None present | 50m    |                  |        |
| Protected Species - Marsh Saxifrage Saxifraga hirculus                                       | None present | 50m    |                  |        |
| Protected Species - Code 1                                                                   | None present | 500m   |                  |        |
| Protected Species - Threatened bryophyte record - WaC Act Schedule 8 Petalophyllum ralfsii   | None present | 50m    |                  |        |
| Protected Species - Shore Dock Rumex rupestris                                               | None present | 50m    |                  |        |
| Protected Species - Threatened bryophyte record - WaC Act Schedule 8 Hamatocaulis vernicosus | None present | 50m    |                  |        |
| Ramsar Sites - Wales                                                                         | None present | 1000m  |                  |        |
| Ramsar Sites - England                                                                       | None present | 1000m  |                  |        |
| Special Areas of Conservation - England                                                      | None present | 1000m  |                  |        |
| Sites of Special Scientific Interest - Wales                                                 | None present | 1000m  |                  |        |
| Special Protection Areas - England                                                           | None present | 1000m  |                  |        |
| Special Areas of Conservation - Wales                                                        | None present | 1000m  |                  |        |
| Special Protection Areas - Wales                                                             | None present | 1000m  |                  |        |
| Sites of Special Scientific Interest - England                                               | None present | 1000m  |                  |        |