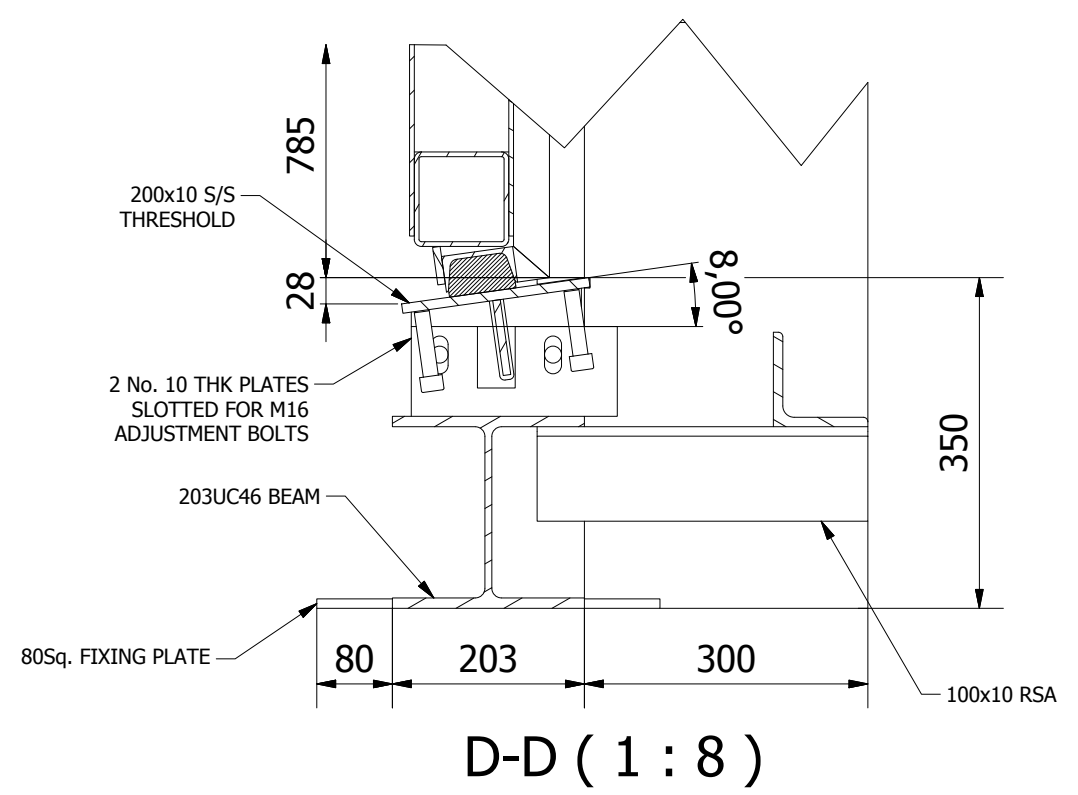
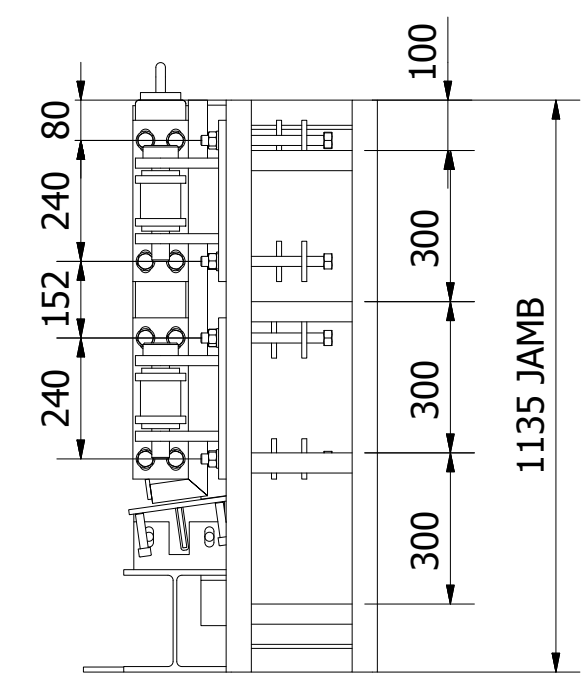
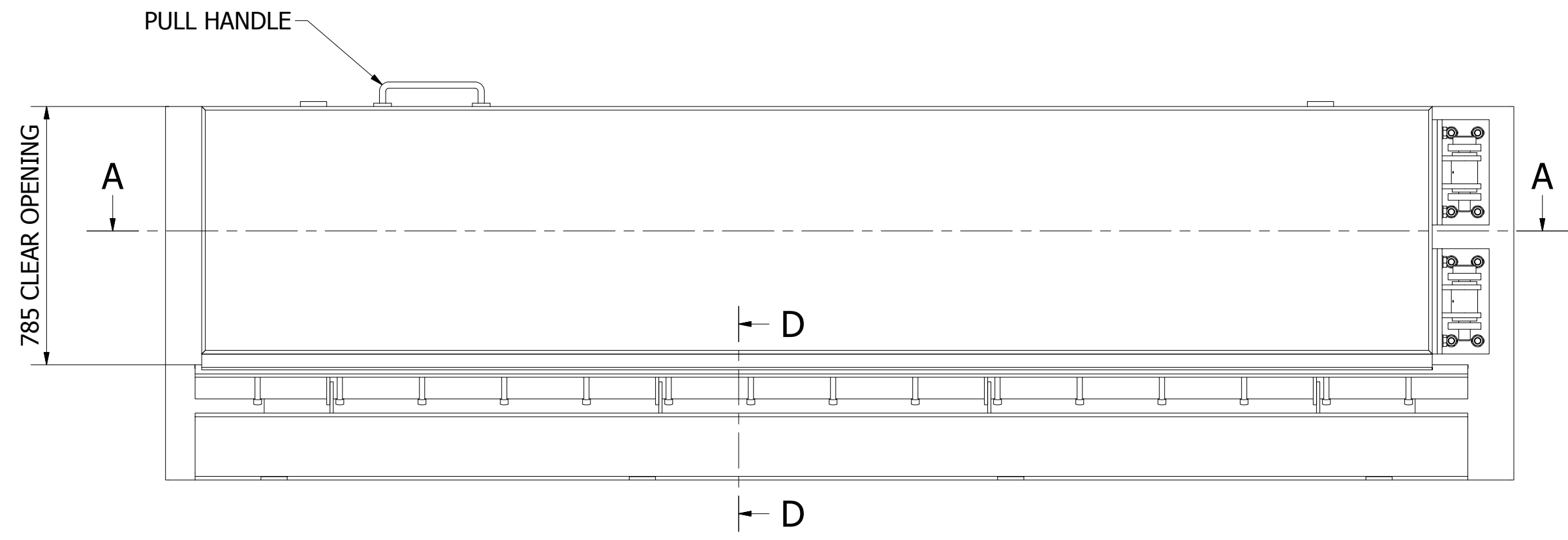
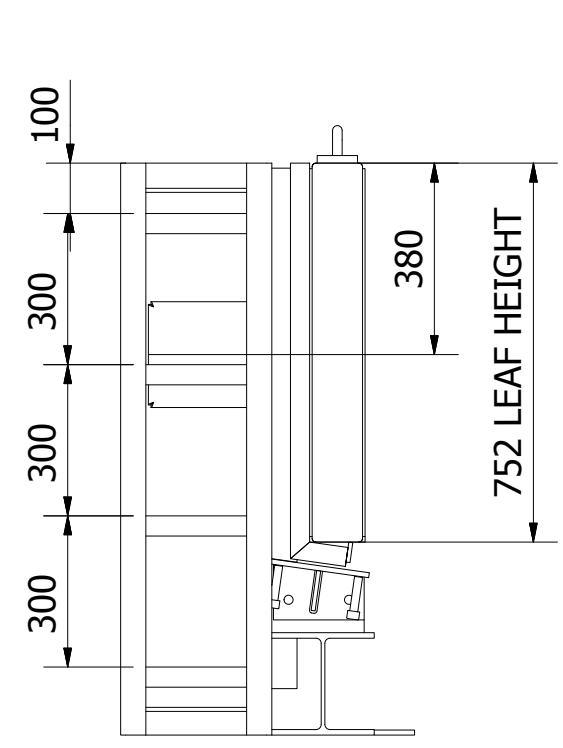
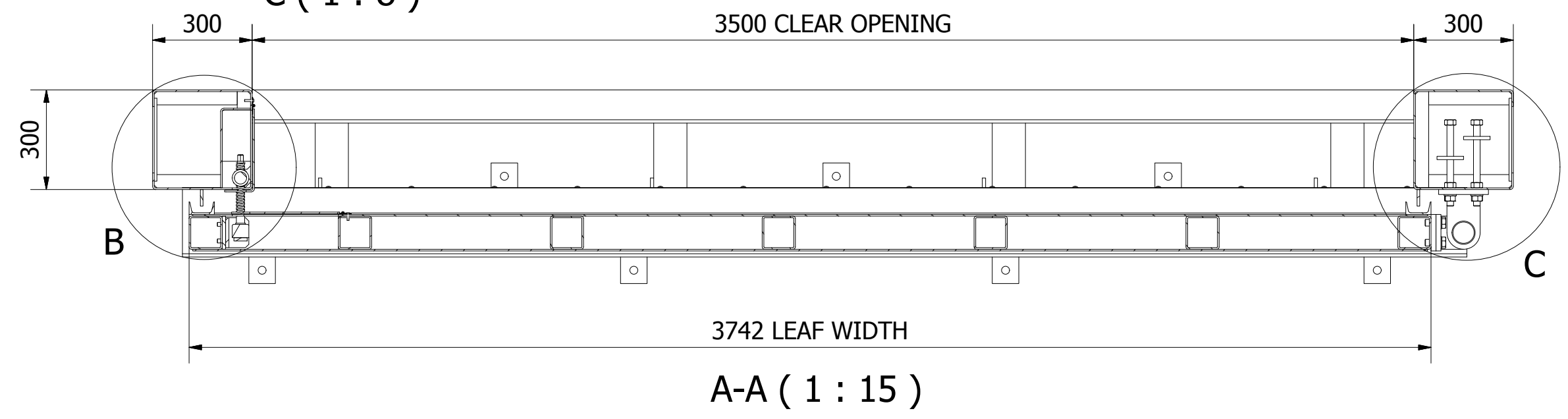
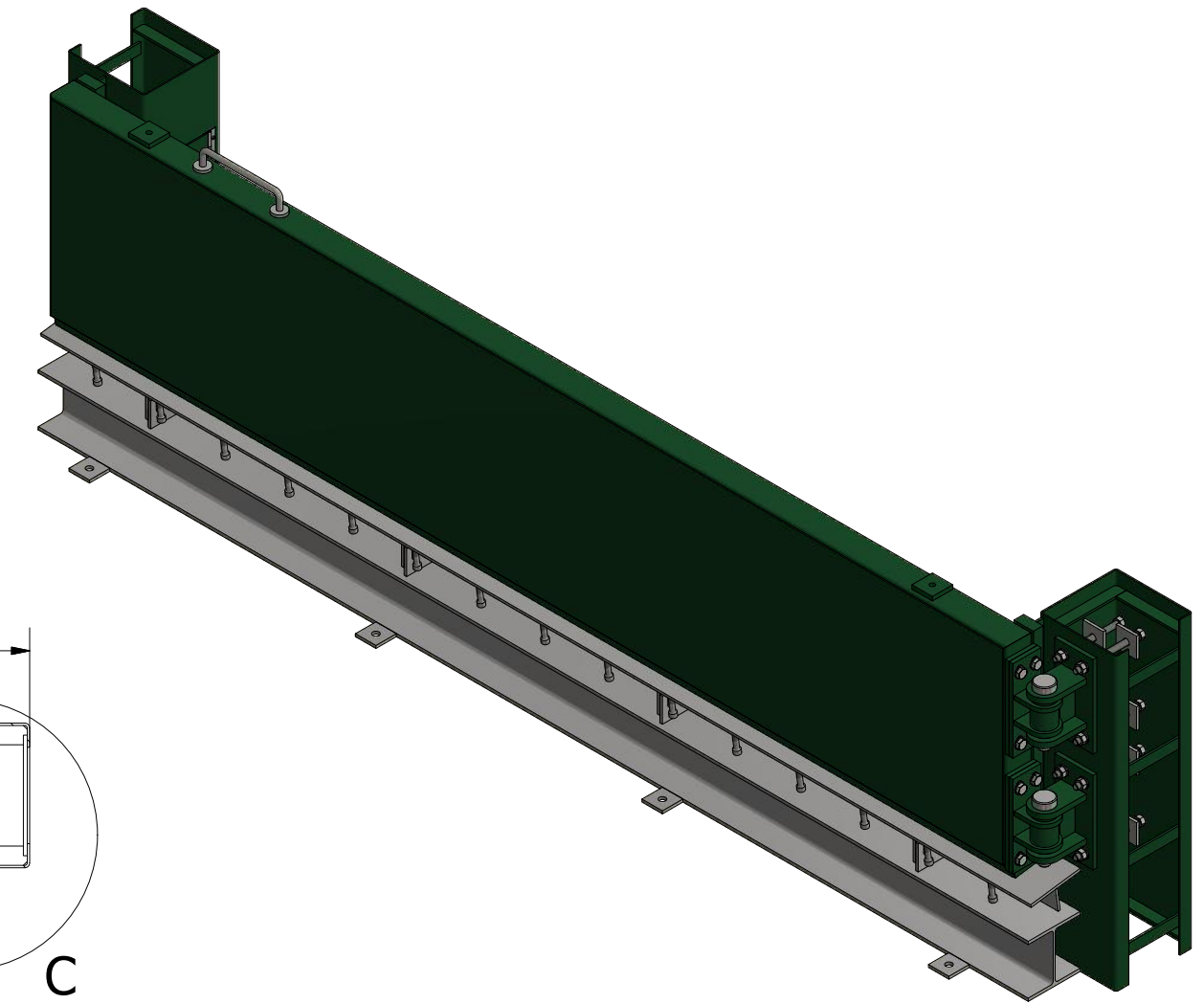
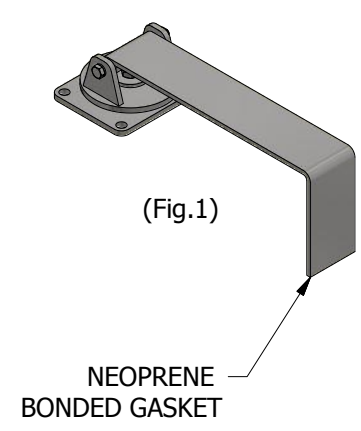


NOTE: Ø22mm ALUMINIUM DOOR STOP & HOLD BACK SWIVEL LATCH (Fig.1) TO BE FITTED ON SITE



Paint
High Gloss Powder Coating
All materials blast cleaned to SA 2.5

85 14 C 39
Hollybush Green

SAFETY, HEALTH & ENVIRONMENTAL INFORMATION
In addition to the hazards risks normally associated with the types of product on this drawing, we note the following risks.

Hazards listed are not exhaustive refer to specific operating manuals, site specific risk assessments and safe systems of work.

Operation
- Opening gates in high winds. The wind speed/loading is to be measured prior to opening and a dynamic risk assessment to be written prior to operation.

Weight
Leaf: 650kg Frame: 540kg
For information relating to Use, Cleaning and maintenance see the Health and Safety File.

It is assumed that all operating will be carried out by an authorised or competent person.

MME
MM ENGINEERING

MME Engineering | Unit 14 Seaway Parade Ind. Estate,
Baglan Energy Park, Port Talbot, SA12 7BR
Tel: 01639 822 893
Web: www.mmengineering.co.uk

Project
Sample Gate

Drawing Title
Single Gate - Vehicle Access

Drawing Status: Preliminary MME Project No: N/A

Scale: A2 - 1:15 Revision: Date: 01/06/2018

Drawn By: S. Griffiths Checked By: J. Morton

Drawing No: MME-0031 Sheet No: 1/1

MME Engineered Solutions Ltd - Registered No. 10148554