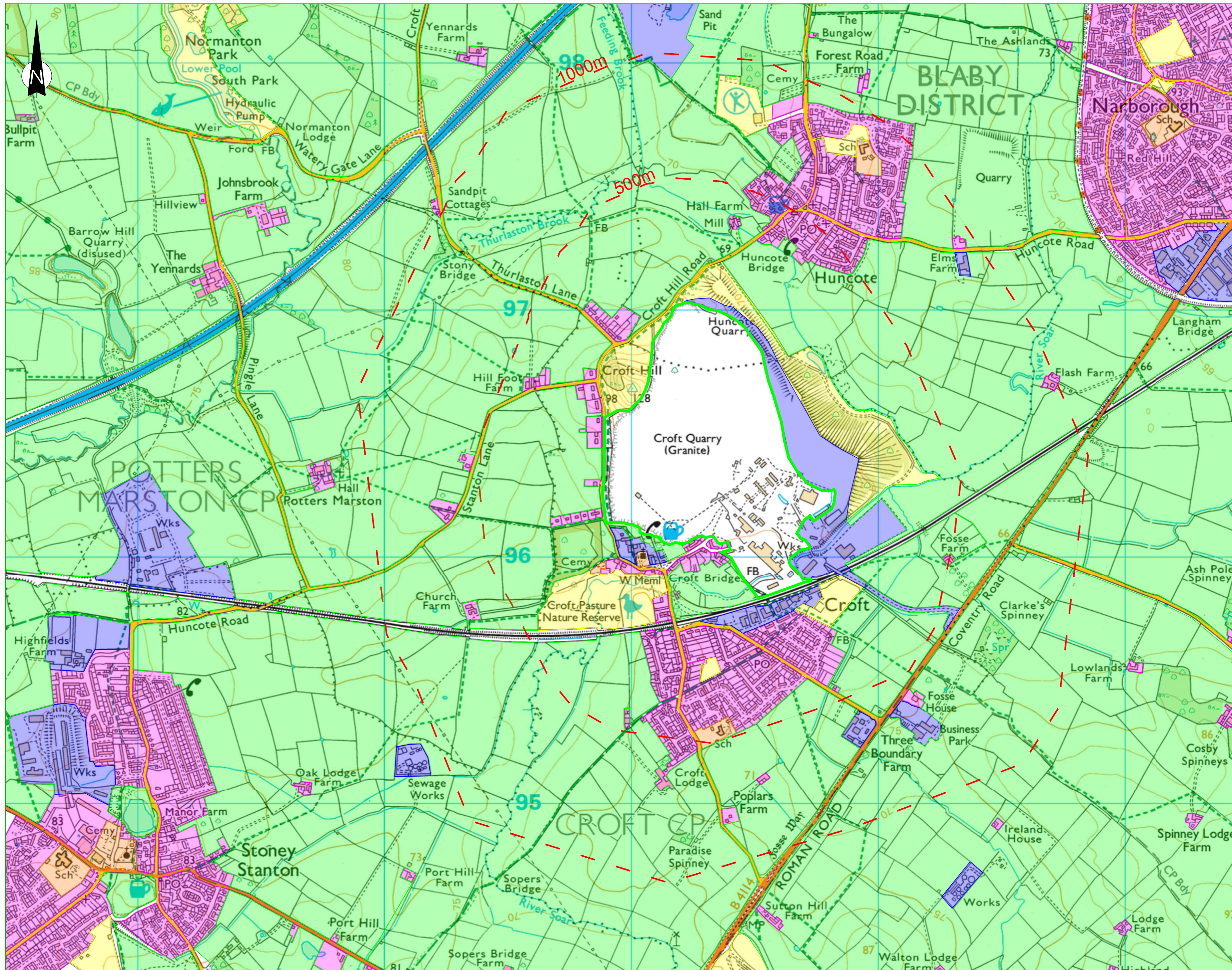


THIS INFORMATION IS CONFIDENTIAL AND THE PROPERTY OF SIRIUS. IT IS RELEASED ON CONDITION THAT NONE OF THE INFORMATION SHALL BE DISCLOSED TO ANY THIRD PARTY OR REPRODUCED IN WHOLE OR PART WITHOUT THE PRIOR CONSENT IN WRITING OF SIRIUS.



- KEY**
- Environmental Permit Boundary
 - Search Buffers (500m and 1000m)
 - Residential Areas
 - Schools, Hospitals, Care Homes etc.
 - Recreational Areas
 - Agricultural/Vegetated Areas
 - Commercial and Industrial Properties
 - Public Rights of Way
 - Class 'A' Public Road
 - Class 'B' Public Road
 - Unclassified Public Road
 - Special Roads (Motorways)
 - Surface Water Features

REV	DESCRIPTION	DATE	BY

CLIENT




Office Suite 2, The Beacon Centre for Enterprise, Dafen, Llanelli. SA14 8LQ. 01554 780 544

JOB TITLE
CROFT QUARRY ENVIRONMENTAL PERMIT VARIATION APPLICATION

DRAWING TITLE
ENVIRONMENTAL SITE SETTING PLAN

DRAWN	DATE	APPROVED	DATE
D.R.	05/05/2024	D.T	05/05/2024

SCALE	SHEET	DRAWING NUMBER	REVISION
1:10,000	A2L	AI1009/14/06	0