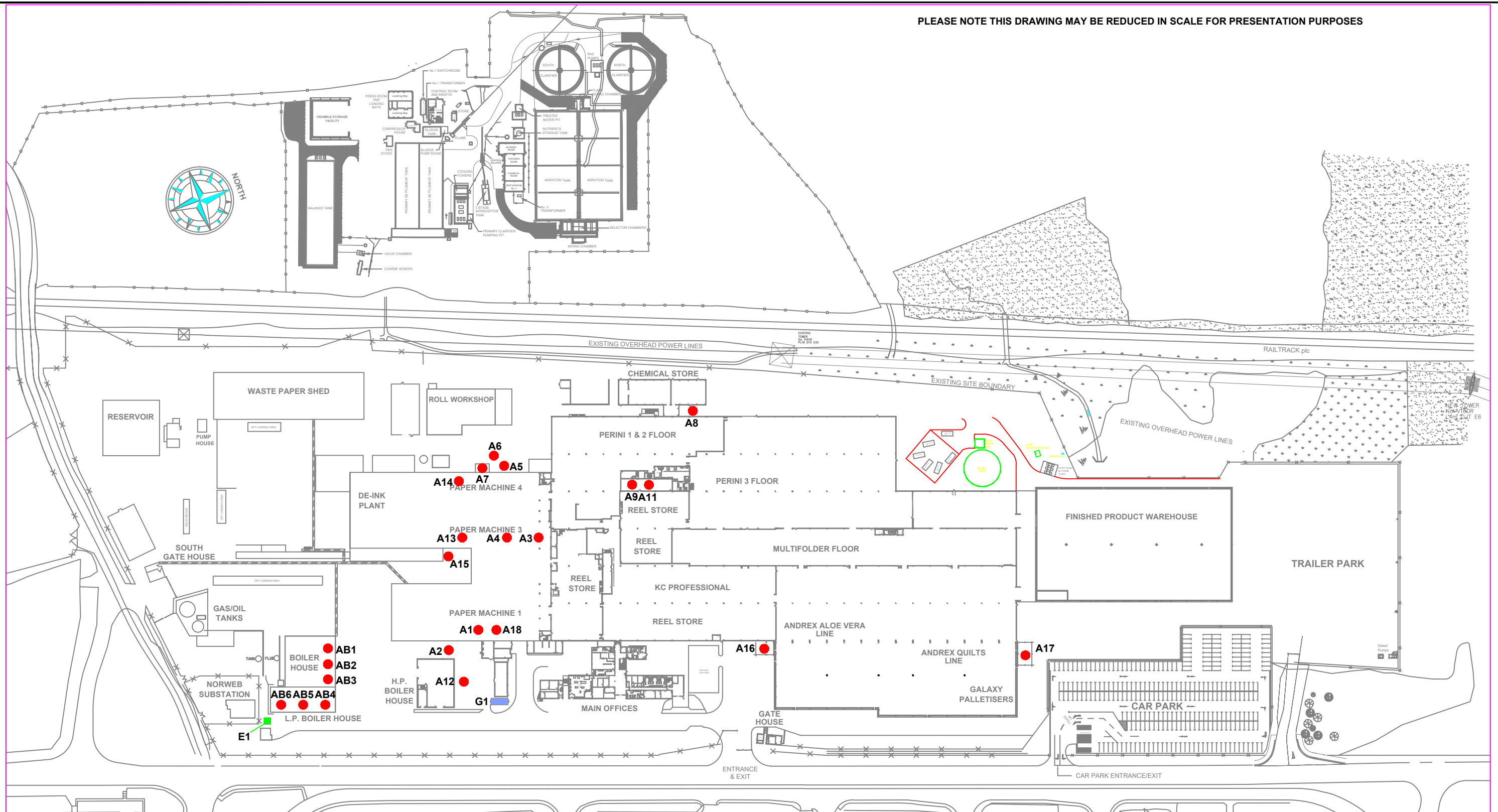


PLEASE NOTE THIS DRAWING MAY BE REDUCED IN SCALE FOR PRESENTATION PURPOSES



- A1. PM1 Rotoclone
- A2. PM1 Mist Eliminator - no longer in use
- A3. PM3 Reel End Extract
- A4. PM3 Rewinder Extract
- A5. PM4 Machine Sheet Cleaner
- A6. PM4 Pulper Vent System - no longer in use
- A7. Recrepe Extractor
- A8. Perini 6 Dust Extract
- A9. Multifolder Extract

- A11. Project Hero Extract
- A12. PM1 TAD Exhaust
- A13. PM3 Drying Hood
- A14. PM4 Drying Hood
- A15. PM3 Mist Eliminator
- A16. Andrex Aloe Vera Extract
- A17. Andrex Quilts Extract
- A18. PM1 Reel End Extract

- AB1-AB3. 3 Main Boilers - 45m Stack
- AB4. Standby Boiler - 20m Stack - no longer in use
- AB5. Standby Boiler - 20m Stack - no longer in use
- AB6. Standby Boiler - 20m Stack

- G1. Numbers 1&2 Gas Meters
For Paper Machine Supply
& Boiler Supply respectively
- E1. Electricity Meter

KP	DATE	REVISIONS	ISSUE
KP	07/03/16	Emission Points A2,A6,AB4 & AB5 modified	Q
KP	02/12/15	Emission Point A8 now Line 6 and A10 Removed	P
KP	29/08/12	Drawing Number now Sheet 1 of 2	N
KP	22/02/12	Standby Boiler House Numbers Changed	M
KP	07/04/10	PM1 Reel End Emission Point Added	L
KP	16/05/06	Galaxy Emission Points Update	K
KP	18/01/06	Emission Points Update	J
KP	21/02/03	Emission Points Update	H
KP	01/02/02	Emission Points Renumbered	G
KP	3/12/01	Emission Points 3a & 3b Reversed	F
KP	15/02/01	Boiler Emission Points added	E

Copyright and all other industrial property rights in this document are the exclusive property of KIMBERLY-CLARK Ltd. The information it contains is confidential and must not be copied, in the whole or part, nor made available to any third party without the written consent of the Company.

Kimberly-Clark
 BARROW MILL
 PARK ROAD,
 BARROW-IN-FURNESS, CUMBRIA, LA14 4QX.
 TEL No. BARROW-IN-FURNESS (01229) 495000
 FAX No. (01229) 495001

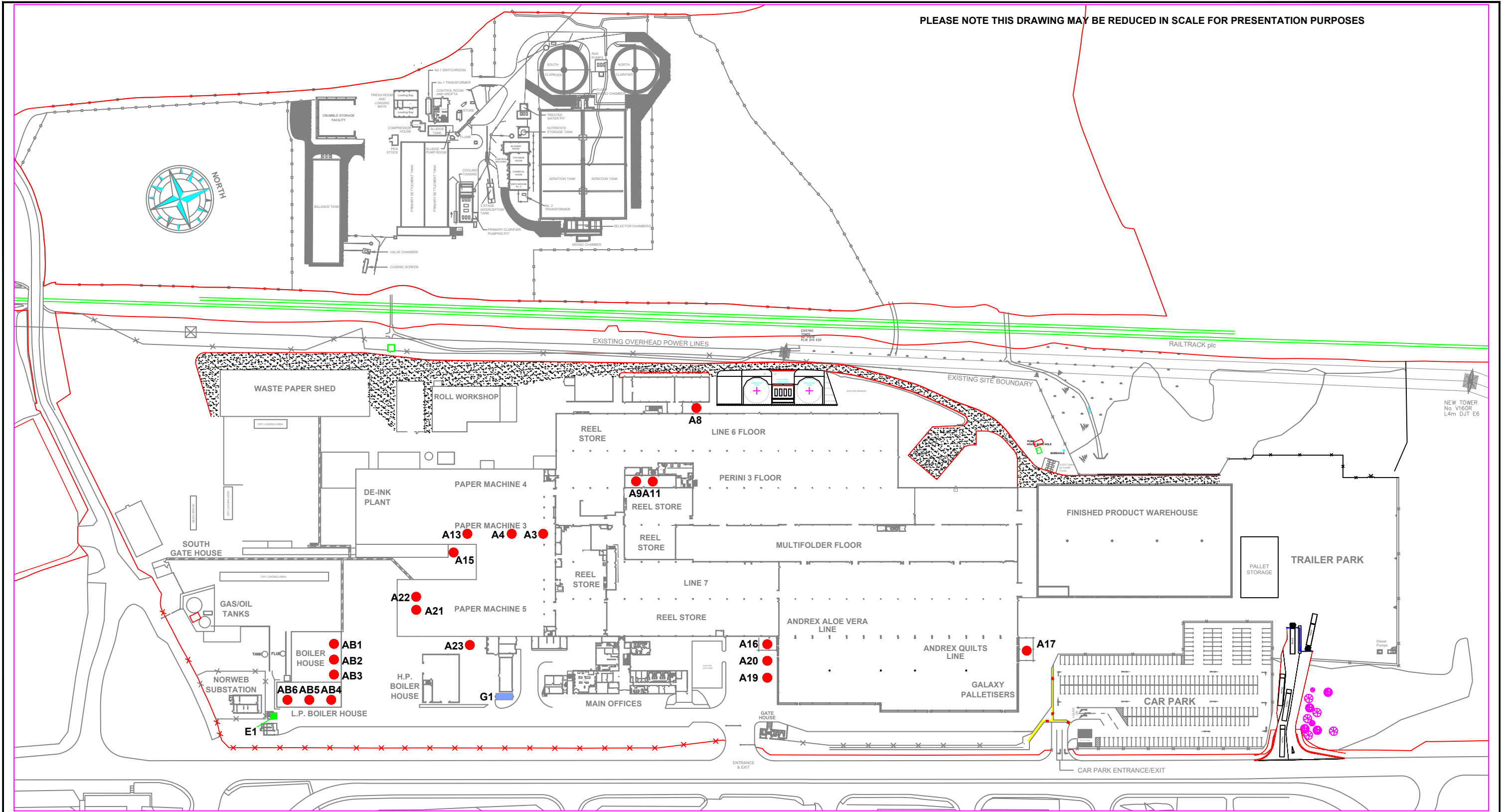
This Drawing is Located in the following directory :
 S:\Corporate\CAD\Drawings\Site\Site Layouts\Site_L05 Sht 1 (Emission Outlets).dwg

THIS DRAWING WAS PRODUCED ON THE CAD SYSTEM - DO NOT ALTER MANUALLY			
DRAWN BY	KP	29.11.00	SCALE 1:1000
CHKED BY			CAD FILE No. Site_L05
CAD CHK			

TITLE
BARROW MILL
 EMISSION
 OUTLET POSITIONS

BY	DATE	REVISIONS	ISSUE
PROJECT No.		DRAWING No. 04.01.A.06 Sheet 1	ISSUE Q

PLEASE NOTE THIS DRAWING MAY BE REDUCED IN SCALE FOR PRESENTATION PURPOSES



- A3. PM3 Reel End Extract
- A4. PM3 Rewinder Extract
- A8. Perini 6 Dust Extract
- A9. Multifolder Extract
- A11. Project Hero Extract
- A13. PM3 Drying Hood
- A15. PM3 Mist Eliminator
- A17. Andrex Quilts Extract

- A19. Line 5
- A20. Line 7
- A21. TM5 Drying Hood
- A22. TM5 Mist Extraction
- A23. TM5 Wet Dust System

- AB1-AB3. 3 Main Boilers - 45m Stack
- AB4. Standby Boiler - 20m Stack - no longer in use
- AB5. Standby Boiler - 20m Stack - no longer in use
- AB6. Standby Boiler - 20m Stack

- G1. Numbers 1&2 Gas Meters For Paper Machine Supply & Boiler Supply respectively
- E1. Electricity Meter

DATE	DESCRIPTION	BY
22/01/21	E. Points A1,2,5,6,12,14 & 18 removed A19,20,21,22 & 23 added	R
07/03/16	Emission Points A2,A6,AB4 & AB5 modified	Q
02/12/15	Emission Point A8 now Line 6 and A10 Removed	P
29/08/12	Drawing Number now Sheet 1 of 2	N
22/02/12	Standby Boiler House Numbers Changed	M
07/04/10	PM1 Reel End Emission Point Added	L
16/05/06	Galaxy Emission Points Update	K
18/01/06	Emission Points Update	J
21/02/03	Emission Points Update	H
01/02/02	Emission Points Renumbered	G
3/12/01	Emission Points 3a & 3b Reversed	F

Copyright and all other industrial property rights in this document are the exclusive property of KIMBERLY-CLARK Ltd. The information it contains is confidential and must not be copied, in the whole or part, nor made available to any third party without the written consent of the Company.

BARROW MILL
PARK ROAD,
BARROW-IN-FURNESS, CUMBRIA, LA14 4QX.
TEL No. BARROW-IN-FURNESS (01229) 495000
FAX No. (01229) 495001

This Drawing is Located in the following directory :
S:\Corporate\CAD\Drawings\Site\Site Layouts\Site_L05 Sht 1 (Emission Outlets).dwg

THIS DRAWING WAS PRODUCED ON THE CAD SYSTEM - DO NOT ALTER MANUALLY			
DRAWN BY	KP	29.11.00	SCALE
CHKED BY			1:1000
CAD CHK			CAD FILE No. Site_L05

TITLE
BARROW MILL

EMISSION
OUTLET POSITIONS

BY	DATE	REVISIONS	ISSUE
PROJECT No.		DRAWING No. 04.01.A.06 Sheet 1	ISSUE R