



C&D Larkshall

Document Title:	Environmental Risk Assessment
Revision:	Issue 1.0
Date:	02/06/2023
Prepared For:	C&D Larkshall



Table of Contents

1.0	Introduction.....	3
1.1	Assessment Process.....	3
2.0	Environmental Risk Management – C&D Larkshall.....	4
3.0	Accident Management	8
3.1	Emergency Contacts.....	8
3.2	Company Contacts (Out of hours).....	8
3.3	Environmental Accident Management Plan	9
4.0	Nearby Receptors	12
5.0	Sites of Ecological Importance	15

List of Tables and Figures

Figure 1	C&D Larkshall Nearby Receptors	13
Figure 2	Nearby SACs to C&D Larkshall	15
Figure 3	Nearby SPAs to C&D Larkshall.....	16
Figure 4	Nearby SSSI to C&D Larkshall.....	17
Table 1	C&D Larkshall Nearby Receptors.....	14



Larkshall

1.0 Introduction

This Environmental Risk Assessment has been produced to support there is no possibility of pollution by hazardous substances in C&D Larkshall.

The document has been produced in conjunction with the environmental management system used on site to ensure environmental performance of C&D Larkshall.

1.1 Assessment Process

The Guidance “*Risk assessments for your environmental permit*” produced by the Environment Agency and DEFRA outlines a five-step process for assessing the site activity and the risk to local amenity to successfully produce an Environmental Risk Assessment:

- Identify and consider risks for your site, and the sources of the risks.
- Identify the receptors (people, animals, property, and anything else that could be affected by the hazard) at risk from your site.
- Identify the possible pathways from the sources of the risks to the receptors.
- Assess risks relevant to your specific activity and check they’re acceptable and can be screened out.
- State what you’ll do to control risks if they’re too high.

This risk assessment will identify the potential human and environmental impacts that could result from the activity on site. Risk assessments will be carried out for the following hazards:

Environmental Risk Assessment	
1. Chemicals/Oils	2. Wastewater
3. Storm Water	4. Bunding and Tanks
5. Refrigeration	6. Waste on site
7. CAT 1,2, and 3 Waste	8. Air Emission
9. Noise	10. Odour
11. Emergency procedures	



2.0 Environmental Risk Management – C&D Larkshall

P = Possibility C = Consequence M = Magnitude

Pollutant Model			Judgement				Action	
Source	Pathway	Receptor	P	C	M	Justification of Magnitude	Risk Management	Residual Risk
Chemicals/Oils on site	Aerial/Spillage/Soil	Local Residents, Local Environment	Low	Low	Low	Low – C&D follow a strict management system with high standards on the control of chemicals and oils on site.	<p>All deliveries to be managed by competent staff in C&D Larkshall.</p> <p>Trays or absorbent material are strategically placed in order to collect any waste oil.</p> <p>Any spillages or discharge to be cleaned up immediately and reported to the Shift Manager in the first instance.</p> <p>Spillage kits are available in high-risk areas. These are in accessible yellow bins.</p> <p>Major spillages are to be reported in the first instance to the shift manager, the HSE Officer who will report to senior management.</p> <p>Minimal chemicals stored on site.</p> <p>All containers of oil/chemicals around the site should be transported in suitable containers. All chemicals must be stored in appropriate approved containers.</p>	Low
Wastewater	Aquatic	Local Environment/Sewer	Low	Low	Low	Low - C&D follow a strict standard which	C&D Larkshall is a dry production site, therefore creates very low levels of Wastewater through processing.	Low



Larkshall

						ensure no raw materials are sent to sewer	No chemicals or raw materials are sent to sewer system and water usage is monitored onsite. C&D Larkshall creates very low levels of wastewater as it is a dry site. This wastewater is stored and then collect by a 3 rd party.	
Stormwater	Aquatic	Local Environment/Sewer	Low	Low	Low	Low – Site layout and drain system adhere to no pollution runoff.	C&D have assessed a site-specific potential stormwater pollution.	Low
Bunding and Tanks	Spillage/Overflow	Local Environment/Sewer	Low	Low	Low	Low - C&D follow a strict standard which ensure regular maintenance and assessment of bunds and tanks on site	Bunded areas are washed and cleaned to ensure no debris remains from processes on site. Tanks on site are inspected weekly to ensure no leakage or damage. All tanks and vessels are either totally enclosed or have inspection lids which under normal conditions are kept closed.	Low
Refrigeration	Aerial Dispersion	Local Environment, Local Residents	Low	Low	Low	Low – C&D follows a strict standard on F Gas/ODS/Ammonia. With documented regular maintenance across the site.	C&D Larkshall stores the following Fgas onsite: R407C, R410A, R404A, R32 Refrigeration gases are subject to annual inspection and service. If any gas is added or removed in our system by an approved contractor, they must provide a completed out ABP F-gas regulation record sheet which is filled onsite. Leak detection is carried out regular through maintenance on site.	Low



Waste	Aerial Dispersion Littering	Local Environment	Low	Low	Low	<p>Low – C&D follows a strict guideline on the removal of waste to reduce build up and maintain standards of site cleanliness.</p>	<p>Waste arising from production is sent to an enclosed compactor in yard. Minimizing any loss of waste due to weather conditions.</p> <p>Only authorised people allowed to use. Training record held onsite.</p> <p>Compactor is regularly services and assessed to ensure efficiently and reduce any noise pollution.</p> <p>All municipal waste on site is handled by licenced haulier.</p>	Low
Cat 3 Waste	Aerial Dispersion	Local Residents	Low	Low	Low	<p>Low – C&D follows a strict standard on the removal of waste to reduce build up and maintain standards of site cleanliness.</p>	<p>Trailer is cleaned and covered when not is use. Appropriately labelled depending on contents.</p> <p>Once production has ceased the trailer is covered and remained covered when removal from site from licenced haulier.</p> <p>All trucks that collect CAT 3 are cleaned regularly to reduce odours when travelling to and from the site.</p>	Low
Air Emissions	Aerial Dispersal	Local Residents, Local Environment	Low	Low	Low	<p>Low – Routine procedures on the control of Air Emissions at C&D ensures compliance</p>	<p>Air emissions from the C&D Foods site are both controlled and minimized, to avoid detriment to the surrounding environment.</p> <p>The site maintains regular maintenance of the onsite air emissions points is essential in order to ensure that air emissions do not result in significant impairment or interference with amenities or the environment outside the site boundary.</p>	Low



							<p>External stack emission monitoring reports are produced as part of the site overall emission efficiency.</p> <p>In line with LA Permit, monthly olfactory and visual checks against the Ringelmann Chart are also completed.</p>	
Noise	Aerial Dispersal	Local Residents	Low	Low	Low	Low – C&D adhere to Noise at Work Policy and follow BAT guidance on Noise reduction on site	Noise Management system is in place to ensure there is no nuisance noise to the surrounding dwelling/landscape.	Low
Odour	Aerial Dispersal	Local Residents	Low	Low	Low	Low – Routine Odour monitoring is carried out on site and at boundary locations.	<p>Various odour control measures are employed onsite. Odour Management plan in place for facility.</p> <p>Odorous wastes are covered during storage and removal. Waste products are not stored on-site for any longer than is necessary.</p> <p>Correct loading and unloading procedures ensure that no odorous materials is spilt during the transfer process, thus avoiding the generation of odour.</p>	Low
Emergencies on site	Aerial, aquatic, soil	Local environment, local residents	Low	Med	Low	Low – Site wide plan in place.	Site wide protocol in case of emergency event available for worst case situations.	Low



3.0 Accident Management

3.1 Emergency Contacts

Emergency Services	999
Local Police	+44 20 8345 3025
Environment Agency Hotline	0800 807 060
Electricity Supplier	Abrey Farms (Landlord)
Local Authority	Breckland District
Waste Disposal Contractors	P&J Waste, Olleco, Whites Recycling

3.2 Company Contacts (Out of hours)

General Managers – Ian Hartridge

Environmental H&S Officer – Alison Ramsbottom

C&D Larkshall facility is ATEX rated, as parts of the building are connected to Abrey Farms buildings, this increases our risk. Therefore, C&D Larkshall works cooperatively with incidents of fire and other emergencies with Abrey Farms.

3.3 Environmental Accident Management Plan

Pollutant Model			Judgement				Action	
Source	Pathway	Receptor	P	C	M	Justification of Magnitude	Consequences	Actions to be taken
Plant Failure (Hydraulic Leaks, Damaged equipment)	Potentially polluting liquids leak into the building where the boilers are housed or onto the hard surfaced ground outside.	Environment	Low	Med	Low	Low - Very little likelihood of occurrence. All equipment subject maintenance regime.	Potentially polluting liquids flow onto hard surfaced area of facility.	<p>Inform site manager.</p> <p>Isolate spill using spill control kits or adsorbent material. Monitor leak and prevent any liquid from entering drains.</p> <p>Drain any contaminated tanks, clean any spillage, and dispose of waste as appropriate.</p> <p>Monitor external areas to ensure no further contamination. Record the incident.</p> <p>Inform Local Authority or Environment Agency if necessary.</p> <p>Review Operations and Management System.</p>



Larkshall

Serve weather events	Flooding, Wind damage, Ice/Frost	Plant and equipment Site Conditions	Low	Med	Low	Low – Site not located in flood zone or adjacent to surface water.	Damage to plant and equipment	Cease operations if required, assess damage and record incident. Inform site manager. Inform Local Authority or Environmental Agency if necessary.
Arson/Vandalism		Plant & Equipment	Low	Med	Low	Low – Site is as secure as possible. All areas locked when not manned. All outside gates and doors locked. The site has no public access.	Damage to equipment	Assess damage, record incident, and review sitewide security – 24/7 Security Mitigate any damage/pollution caused. Inform site manager Inform Local Authority or Environmental Agency



Larkshall

Fire	Spread from source of ignition	Site buildings	Low	Med	Med	<p>Med – No ignition sources permitted near flammable materials.</p> <p>Fuel must be stored to prevent fire.</p>	<p>Fire could spread to site buildings, subject to wind direction and strength.</p> <p>Potential for serve damage to property and potential loss of life from fire/smoke inhalation</p>	<p>Raise alarm on site</p> <p>Call 999</p> <p>Ensure personal are alerted evacuated and accounted for from danger area, following the fire evacuation plan.</p> <p>If able switch off electricity/fuel supplies.</p> <p>Follow instruction of emergency teams</p> <p>Any firewater disposed or treated appropriately.</p> <p>C&D Larkshall facility are ATEX rated, as parts of the building are connected to Abrey Farms buildings, this increases our risk. Therefore, C&D Larkshall works cooperatively with incidents of fire and other emergencies with Abrey Farms</p>
------	--------------------------------	----------------	-----	-----	-----	--	---	--



Larkshall

4.0 Nearby Receptors

The C&D Larkshall site has a total area of approximately 14,108m². The local area surrounding the site is of the majority industrial and arable land for agricultural purposes primarily owned by the facility landlord Abrey Farms. Therefore, the primary businesses and receptors for the area can be classified as agricultural and agro-industrial.

The prevailing wind for the site is a south-westerly wind.

C&D Larkshall has invested heavily into making the site have as little environmental impact as possible.

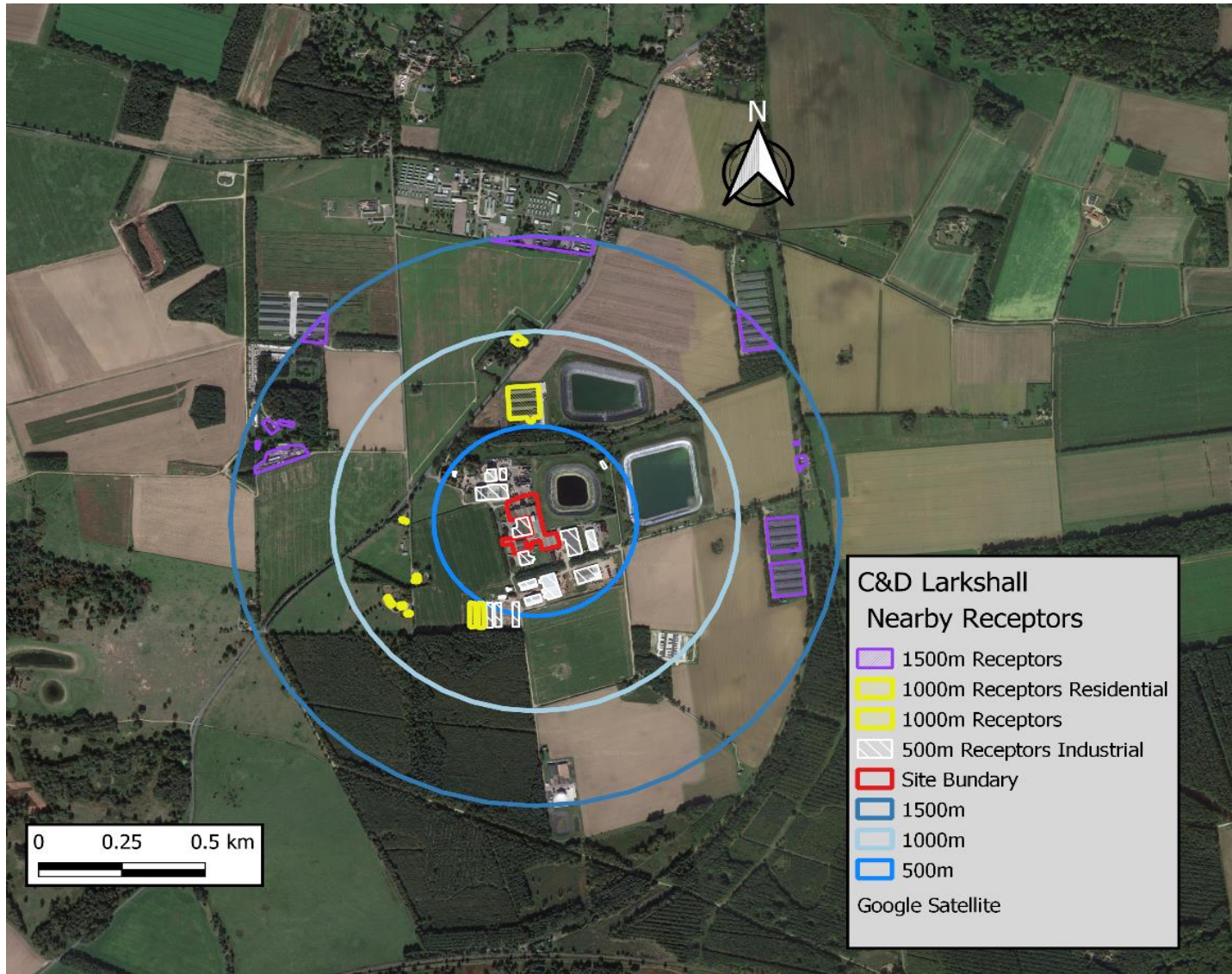


Figure 1 C&D Larkshall Nearby Receptors



Larkshall

Receptor	Name	Grid Reference	Direction from site	Distance from site
1	Arbey Farms	LAT: 52°27'54"N LONG: 000°49'35"E	C&D Larkshall facility is located centrally within Arbey's farm	All within 500m of facility
2	SawPit Farm	LAT: 52°28'07"N. LONG: 000°49'36"E	North	525m
3	Grove Farm Nurseries	LAT: 52°28'11"N LONG: 000°49'31"E	North	930m
4	Multiple residential dwellings	LAT: 52°27'48"N LONG: 000°49'19"E	Southwest	689m
5	Cutting Farm	LAT: 52°27'54"N LONG: 000°50'15"E	East	1155m
6	Bridge Farm	LAT: 52°28'12"N LONG: 000°50'11"E	Northeast	1400m
7	Middle Farm	LAT: 52°28'04"N LONG: 000°48'56"E	West	1240m
8	Wretham Camp	LAT: 52°28'22"N LONG: 000°49'43"E	North	1465m

Table 1 C&D Larkshall Nearby Receptors

5.0 Sites of Ecological Importance

The designation of natural areas and rural regions gives them a special status as protected areas because of their significance to both culture and nature. These include Special Areas of Conservation (SAC), Special Protection Areas (SPA), and Sites of Special Scientific Interest (SSSI).

The most significant locations for wildlife in the UK are SACs, which are also significant on a global scale for the biodiversity and habitats they support. They are safeguarded under the Habitats Directive of the European Union and are an essential component of international efforts to preserve biodiversity.

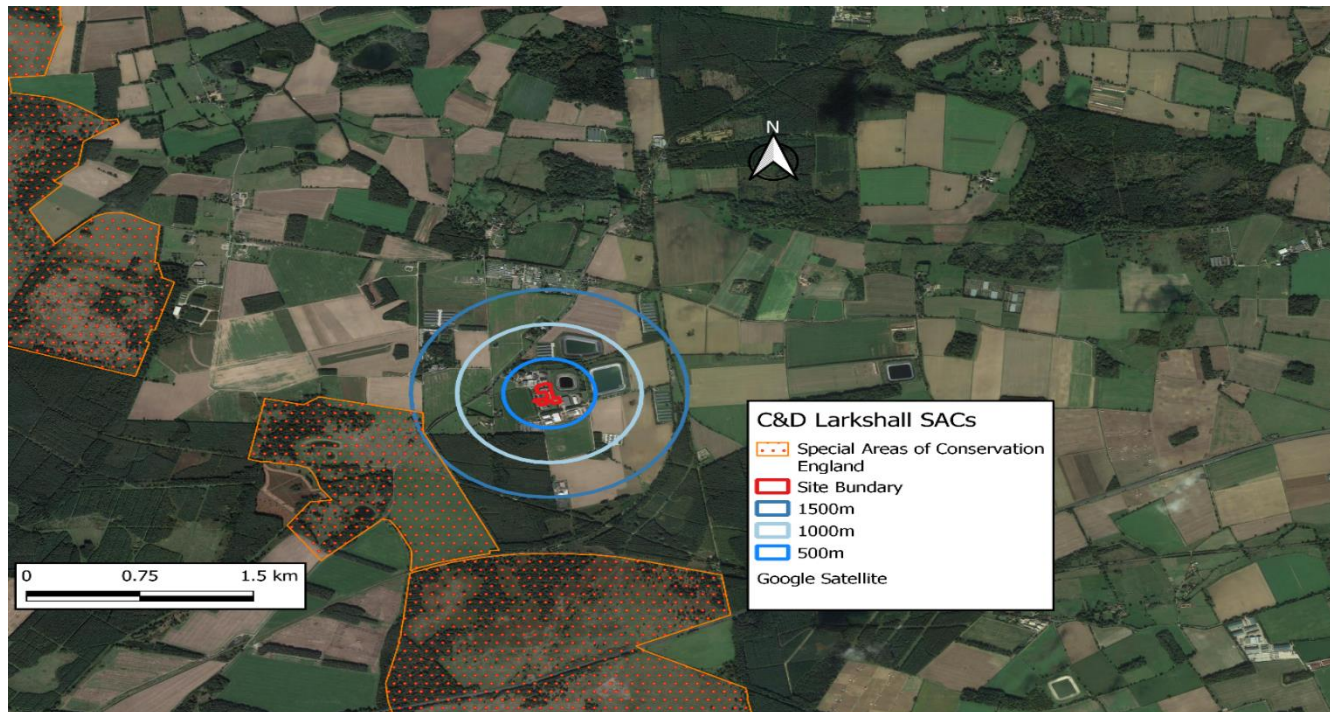


Figure 2 Nearby SACs to C&D Larkshall

- C&D Larkshall is situated close to a nationally recognized SAC. This SAC is located approximately 800m to the southwest of the facility.

The UK is required under the terms of the EU Birds Directive (2009/147/EC) to designate SPAs for the protection of rare and vulnerable species, regularly occurring migratory species, wetland especially those of international importance.

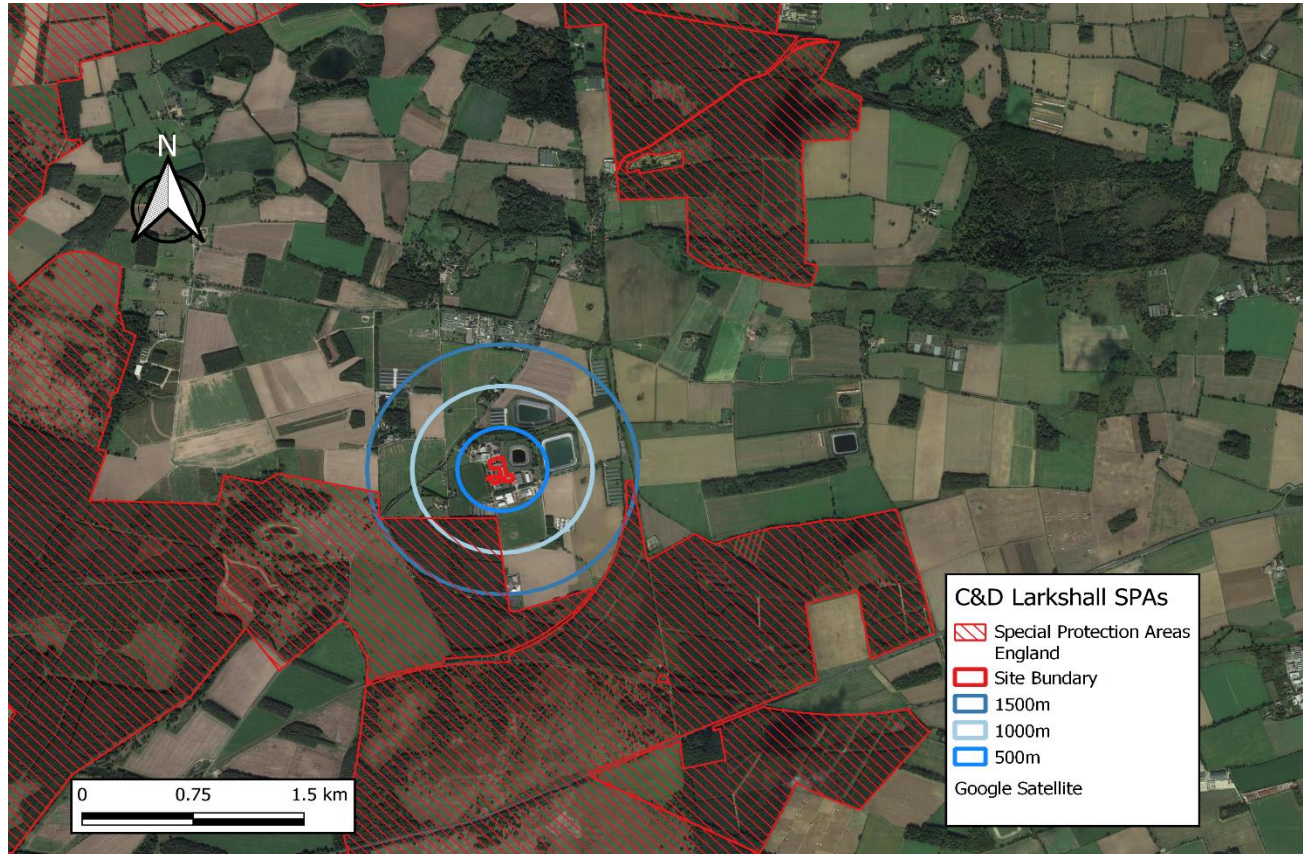
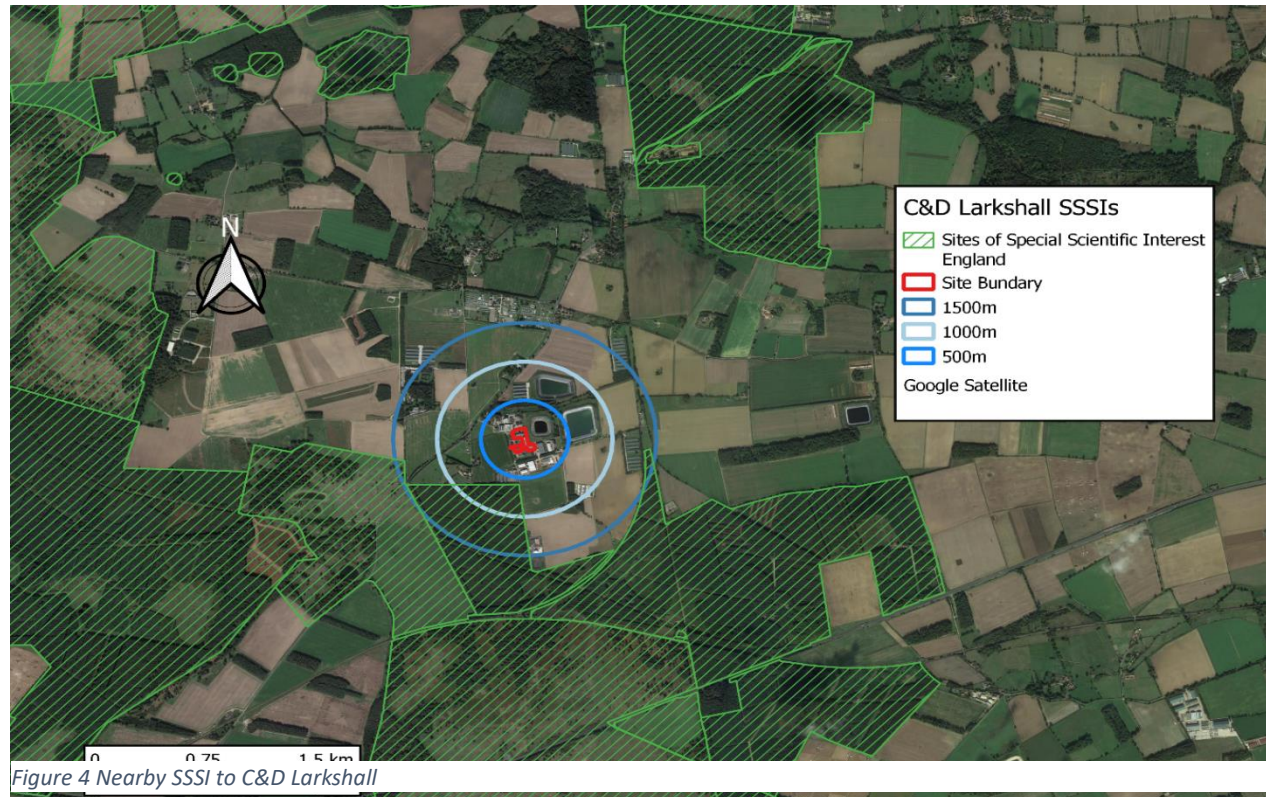


Figure 3 Nearby SPAs to C&D Larkshall

- C&D Larkshall is situated approximately 500m from a nationally recognized SPA.

A Site of Special Scientific Interest (SSSI) is the land notified as an SSSI under the Wildlife and Countryside Act (1981), as amended. SSSI are the finest sites for wildlife and natural features in England, supporting many characteristic, rare and endangered species, habitats, and natural features.



- C&D Larkshall is close to a nationally recognized SSSI. This SSSI is located approximately 500m from the site.