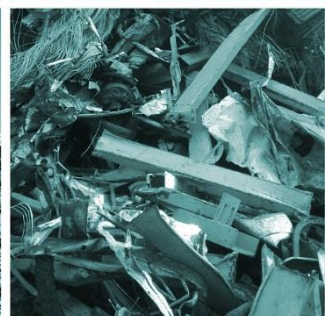
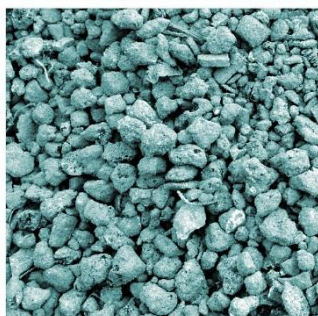
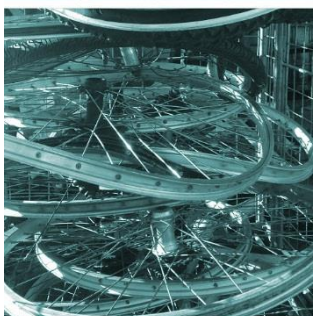
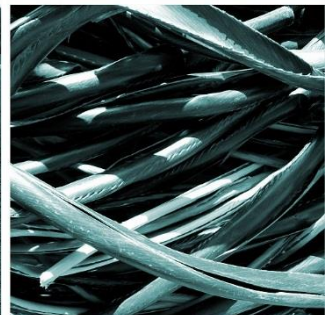
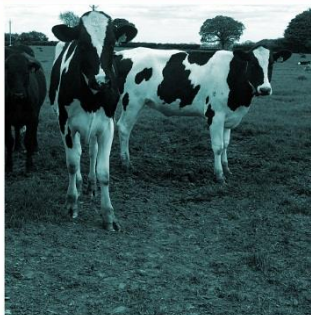
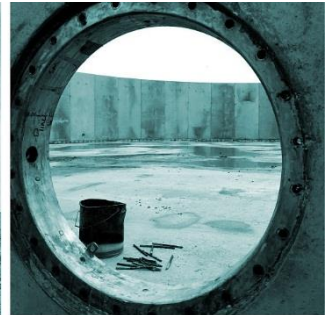


# **BROCKLESBY LIMITED**

## **PERMIT VARIATION**

### Sampling Point Monitoring Locations

June 2021



Client: Brocklesby Limited  
Document Reference: HC1676-17

## REPORT SCHEDULE

**Operator:** Brocklesby Limited

**Client:** Brocklesby Limited

**Project Title:** Brocklesby Limited – Permit Variation Application

**Document Title:** Sample Point Monitoring Locations

**Document Reference:** HC1676-17

**Report Status:** Final 1.0

**Project Director:** Joanna Holland

**Project Manager:** Jo Chapman

AUTHOR	DATE
Jo Chapman	10 <sup>th</sup> May 2021
REVIEWER	
Joanna Holland	8 <sup>th</sup> June 2021
APPROVED	
Joanna Holland	8 <sup>th</sup> June 2021

REVISION HISTORY	DATE	COMMENTS	APPROVED
Final Version 1.0	8 <sup>th</sup> June 2021	For Client Review	Joanna Holland
Final Version 1.0	22 <sup>nd</sup> June 2021	For submission to EA	Rob Brocklesby

### DISCLAIMER

This report has been prepared by H&C Consultancy Ltd with all reasonable skill, care and diligence. It has been prepared in accordance with instructions from the client and within the terms and conditions agreed with the client. The report is based on information provided by the Client and our professional judgment at the time this report was prepared.

The report presents H&C Consultancy's professional opinion and no warranty, expressed or implied, is made.

This report is for the sole use of Brocklesby Limited and H&C Consultancy Ltd shall not be held responsible for any user of the report or its content for any other purpose other than that which it was prepared and provided to the client. H&C Consultancy accepts no liability to third parties.

## CONTENTS

1. Sampling points for point source emissions .....	1
---	---

## 1. SAMPLING POINTS FOR POINT SOURCE EMISSIONS

### 1.1. Sample Points

- 1.1.1. Sample points will need to be identified from the two natural gas boilers in accordance with the requirements laid out in the permit once varied. Stack location and monitoring methodology will be determined in accordance with the Environment Agency's M1 guidance document, and according to the standard stated in the permit. There are currently no AEL's set for emissions from boilers on the site permit, and no reporting or monitoring requirements. We anticipate that this will now be amended as two new boilers that are subject to the requirements of the Medium Combustion Plant Directive have now been installed. Additions will be made to the site EMS once the permit variation has been issued.
- 1.1.2. The sample point associated with emissions to sewer has been agreed in association with the local water company as part of the trade effluent discharge consent application procedure.
- 1.1.3. The sample point and sample methodology for emissions to surface water are as outlined in the EMS procedure for the site which is included in the BAT assessment submitted with this application reference HC1676-18 – Measures to Demonstrate BAT.
- 1.1.4. Sampling methodology and philosophy for odour abatement equipment has been outlined in the site Odour Management Plan, reference HC1676-13.



Registered office:  
Staffordshire House  
Beechdale Road  
Nottingham NG8 3FH  
Company No. 7861810

☎ 0115 923 2253  
☎ 07506 658098 / 07525 211381  
🌐 [www.hc-consultancy.co.uk](http://www.hc-consultancy.co.uk)