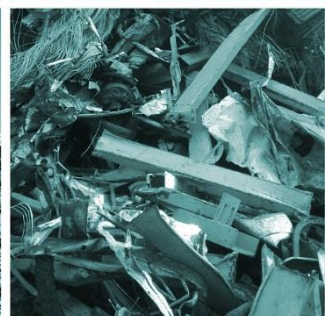
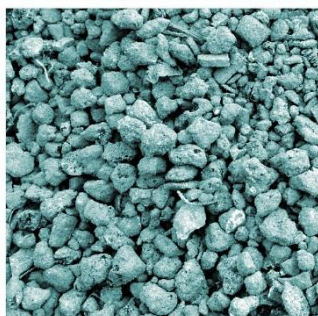
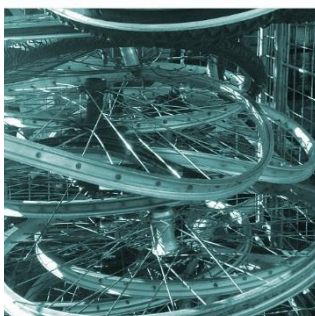
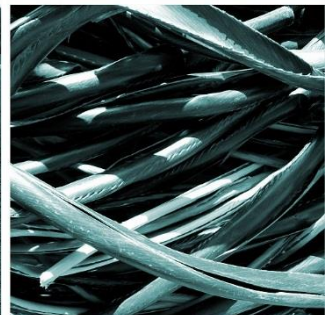
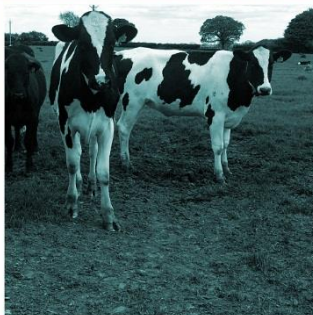
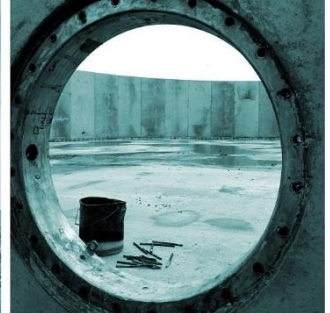


# BROCKLESBY LIMITED PERMIT VARIATION

## Emissions Point Monitoring

June 2021



Client: Brocklesby Limited  
Document Reference: HC1676-16

## REPORT SCHEDULE

**Operator:** Brocklesby Limited

**Client:** Brocklesby Limited

**Project Title:** Brocklesby Limited - Permit Variation Application

**Document Title:** Emission Point Monitoring

**Document Reference:** HC1676-16

**Report Status:** Final V1.0

**Project Director:** Joanna Holland

**Project Team:** Jo Chapman

AUTHOR	DATE
Jo Chapman	10 <sup>th</sup> May 2021
REVIEWER	
Joanna Holland	8 <sup>th</sup> June 2021
APPROVED	
Joanna Holland	8 <sup>th</sup> June 2021

REVISION HISTORY	DATE	COMMENTS	APPROVED
Final Version 1.0	8 <sup>th</sup> June 2021	For Client Review	Joanna Holland
Final Version 1.0	22 <sup>nd</sup> June 2021	For submission to EA	Rob Brocklesby

### DISCLAIMER

This report has been prepared by H&C Consultancy Ltd with all reasonable skill, care and diligence. It has been prepared in accordance with instructions from the client and within the terms and conditions agreed with the client. The report is based on information provided by the Client and our professional judgment at the time this report was prepared.

The report presents H&C Consultancy's professional opinion and no warranty, expressed or implied, is made.

This report is for the sole use of Brocklesby Limited and H&C Consultancy Ltd shall not be held responsible for any user of the report or its content for any other purpose other than that which it was prepared and provided to the client. H&C Consultancy accepts no liability to third parties.

## CONTENTS

1. Emission Point Monitoring .....	1
------------------------------------	---

## 1. EMISSION POINT MONITORING

Emission point reference and location	Monitoring Method	Monitoring Frequency	Relevant Procedures
A1-Odour Scrubber	Daily odour sniff test monitoring	Daily	Outlined in odour management plan
A2- Boiler Exhaust Stack	Daily odour sniff test monitoring  Currently no other monitoring parameters set on permit	Daily	Outlined in odour management plan
A3- Boiler Exhaust Stack	Daily odour sniff test monitoring  Currently no other monitoring parameters set on permit	Daily	Outlined in odour management plan
A4- Vapour Absorber Outlet	Daily odour sniff test monitoring	Daily	Outlined in odour management plan
A5- Odour Absorber	Daily odour sniff test monitoring	Daily	Outlined in odour management plan
A6- Odour Absorber	Daily odour sniff test monitoring	Daily	Outlined in odour management plan
A7 – Tank Farm Displaced Air Carbon Filter Vent	Daily odour sniff test monitoring	Daily	Outlined in odour management plan
A8 – Tank Farm Displaced Air Carbon Filter Vent	Daily odour sniff test monitoring	Daily	Outlined in odour management plan
A9 – Tank Farm Displaced Air Carbon Filter Vent	Daily odour sniff test monitoring	Daily	Outlined in odour management plan
A10 – Tank Farm Displaced Air Carbon Filter Vent	Daily odour sniff test monitoring	Daily	Outlined in odour management plan

Emission point reference and location	Monitoring Method	Monitoring Frequency	Relevant Procedures
A11 – Vent from Process Shed Extraction System	Daily odour sniff test monitoring	Daily	Outlined in odour management plan
A12 – Vent from Process Shed Extraction System	Daily odour sniff test monitoring	Daily	Outlined in odour management plan
S1 – Discharge point of domestic sewage to foul sewer	Not monitored	-	-
S2 – Boiler Blowdown discharge to foul sewer	According to Requirements of Water Company Trade Effluent Discharge Consent	According to Requirements of Water Company Trade Effluent Discharge Consent	SOP for sampling of trade effluent included in EMS.
W1 – Surface water discharge to swale	<p>Daily/Weekly/Monthly Sampling and Testing Schedule and acceptable parameter ranges outlined in 'SOP 52 – Quality benchmark for run off and surface water effluent'</p> <p>Batch sampling of water collected in tank farm containment bund each time prior to release as outlined in SOP 52.</p>	As determined in SOP 52 – Quality benchmark for run off and surface water effluent'	SOP 52 – Quality benchmark for run off and surface water effluent' (Appendix to HC1676-18 -Measures to Demonstrate BAT).



Registered office:  
Staffordshire House  
Beechdale Road  
Nottingham  
NG8 3FH  
Company No. 7861810

☎ 0115 923 2253  
☎ 07506 658098 / 07525 211381  
🌐 [www.hc-consultancy.co.uk](http://www.hc-consultancy.co.uk)