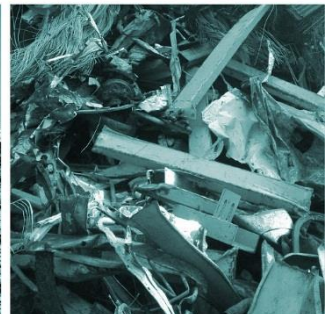
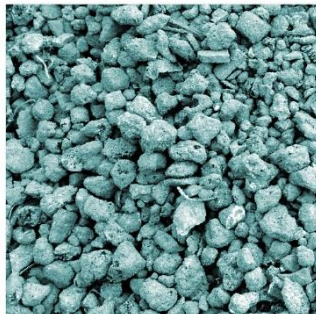
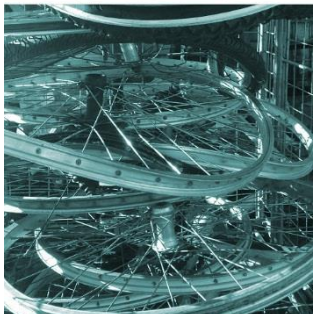
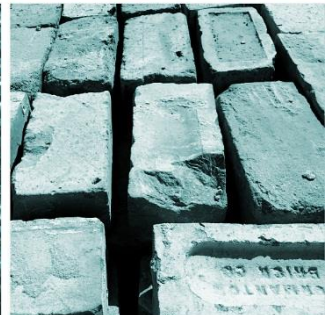
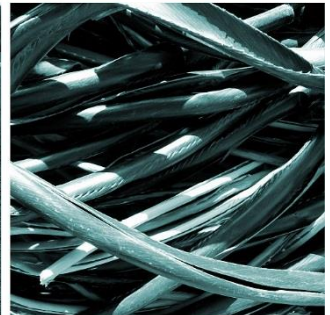
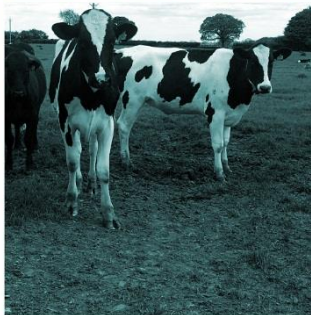
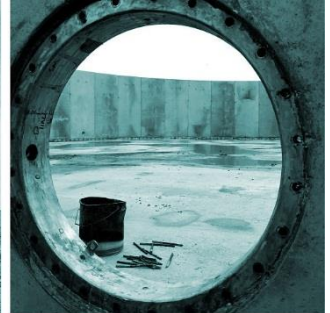


BROCKLESBY LIMITED PERMIT VARIATION

Raw Materials List

June 2021



Client: Brocklesby Limited
Document Reference: HC1676-15

REPORT SCHEDULE

Operator: Brocklesby Limited

Client: Brocklesby Limited

Project Title: Brocklesby Limited Permit Variation

Document Title: Brocklesby Limited Raw Materials List

Document Reference: HC1676-15

Report Status: Final V1.0

Project Director: Joanna Holland

Project Manager: Jo Chapman

AUTHOR	DATE
Jo Chapman	3 RD June 2021
REVIEWER	
Joanna Holland	8 th June 2021
APPROVED	
Joanna Holland	8 th June 2021

REVISION HISTORY	DATE	COMMENTS	APPROVED
Final Version 1.0	8 th June 2021	For Client Review	Joanna Holland
Final Version 1.0	22 nd June 2021	For submission to EA	Rob Brocklesby

DISCLAIMER

This report has been prepared by H&C Consultancy Ltd with all reasonable skill, care and diligence. It has been prepared in accordance with instructions from the client and within the terms and conditions agreed with the client. The report is based on information provided by the Client and our professional judgment at the time this report was prepared.

The report presents H&C Consultancy's professional opinion and no warranty, expressed or implied, is made.

This report is for the sole use of Brocklesby Limited and H&C Consultancy Ltd shall not be held responsible for any user of the report or its content for any other purpose other than that which it was prepared and provided to the client. H&C Consultancy accepts no liability to third parties.



CONTENTS

1. Raw Materials List.....	1
----------------------------	---

1. RAW MATERIALS LIST

Product	Maximum Quantities Used Per Year	Maximum Volumes/Tonnes Stored on Site at One Time	Storage Arrangements and Location	Fate of Raw Materials in the Facility (where will it be used)	Potential Environmental Impact
Production					
Methanol	375t	100t	60m ³ Bunded Outdoor Stainless-Steel Tank x3	NCL esterification plant.	Flammable and can create vapours which are explosive. Irritant and harmful/toxic to if ingested in significant quantities. Impact on aquatic environments if discharged to surface water.
Sulphuric Acid	500t	50t	30m ³ Bunded Outdoor Stainless-Steel Tank 50m ³ Bunded Outdoor Plastic Tank	NCL esterification plant.	Low pH will cause irritation and/or burns to skin eyes if in contact. If discharged to aquatic environment, may affect the acidity (pH) of water which may have hazardous effects on aquatic organisms
Caustic Soda	100t	26t	30m ³ Bunded Outdoor Carbon Steel Tank 3m ³ Bunded Outdoor Carbon Steel Tank	NCL esterification plant.	High pH. Potentially corrosive to metals and cause irritation or burns to skin and eyes if in contact. If discharged to aquatic environment, may affect the pH of water which may have hazardous effects on aquatic organisms
Hydraulic Oil	416 litres	200L	Integrally bunded tank In Barrel	Transport / Engineering	Toxic to animals and humans. Can have long term, persistent impacts if areas of land or

Product	Maximum Quantities Used Per Year	Maximum Volumes/Tonnes Stored on Site at One Time	Storage Arrangements and Location	Fate of Raw Materials in the Facility (where will it be used)	Potential Environmental Impact
			Stored Outside		water become contaminated following uncontrolled release. Also, direct physical impact on aquatic environment if lost to sewer, via exclusion of oxygen, and physical impacts by coating plants and animals.
Engine Oil	204 litres	200 Ltr	Integrally bunded tank In Barrel Stored Outside	Transport	Toxic to animals and humans. Can have long term, persistent impacts if areas of land or water become contaminated following uncontrolled release. Also, direct physical impact on aquatic environment if lost to sewer, via exclusion of oxygen, and physical impacts by coating plants and animals.
Catenera KSB 8 Grease	10kg	2Kg	COSH Cabinet	Production	Can cause blockages to infrastructure leading to uncontrolled releases of substances to the environment.
Virkon Disinfectant (Powder)	80kg	10Kg	Food Machine Office	Production (Foot Dip)	Powder form can cause irritation if inhaled or comes in contact with eyes or skin Short term impacts on ecology if released to watercourse.

Product	Maximum Quantities Used Per Year	Maximum Volumes/Tonnes Stored on Site at One Time	Storage Arrangements and Location	Fate of Raw Materials in the Facility (where will it be used)	Potential Environmental Impact
FAM 30	12t	1t	IBC stored Outside in a bunded area	Cleaning of CAT 3 ABP materials and foot dips	H290 May be corrosive to metals. H314 Causes severe skin burns and eye damage. H411 Toxic to aquatic life with long lasting effects.
Gas Oil, FLT Fuel	24000 litres	3700ltr	Integrally bunded Diesel Storage Tank – Stored Outside	Site plant	Toxic to animals and humans. Can have long term, persistent impacts if areas of land or water become contaminated following uncontrolled release. Also, direct physical impact on aquatic environment if lost to sewer, via exclusion of oxygen, and physical impacts by coating plants and animals.
Water	25,000t	Discharged	Mains	Boiler/heating operations	Boiler blowdown water may have elevated COD, contain suspended solids, or be discharged at higher temperatures that could impact on ecology of surface water if discharged to the environment.
25kg Salt Tablets	12t	2t	Boiler Room in bunded storage	Water softening for boilers	Large quantities discharged to aquatic environment may impact on aquatic ecology.

Product	Maximum Quantities Used Per Year	Maximum Volumes/Tonnes Stored on Site at One Time	Storage Arrangements and Location	Fate of Raw Materials in the Facility (where will it be used)	Potential Environmental Impact
Cleaning					
Birmex D1 Catering Plus Detergent 5L	12	5	Site Services Container	Site Cleaning	Various impacts if released to environment. See data sheets for more details if required. Only small amounts stored on site at one time.
Birmex White Bacterial Hand Soap 5L	4	2	Site Services Container	Site Cleaning	Various impacts if released to environment. See data sheets for more details if required. Only small amounts stored on site at one time.
Birmex Concentrated Bleach 5L Bottle	8	4	Site Services Container	Site Cleaning	Various impacts if released to environment. See data sheets for more details if required. Only small amounts stored on site at one time.
Concentrated Degreaser & Hard Surface Cleaner – 5L	48	14	Site Services Container	Site Cleaning	Various impacts if released to environment. See data sheets for more details if required. Only small amounts stored on site at one time.

Product	Maximum Quantities Used Per Year	Maximum Volumes/Tonnes Stored on Site at One Time	Storage Arrangements and Location	Fate of Raw Materials in the Facility (where will it be used)	Potential Environmental Impact
Traffic Film Remover / Cleaner 1,000L	200	14	Rear Yard / Factory storage	Site Cleaning	Various impacts if released to environment. See data sheets for more details if required. Only small amounts stored on site at one time.
Concentrated Vehicle Screen Wash 1,000L	2	1	Factory Storage	Site Cleaning	Various impacts if released to environment. See data sheets for more details if required. Only small amounts stored on site at one time.
Brocklesby Alkaline Low Foam Performance Degreaser 1,000L	24	3	Rear Yard / Factory container	Barrel wash	Various impacts if released to environment. See data sheets for more details if required. Only small amounts stored on site at one time.
Sodium Carbonate Light 25kg	320	80	Factory Indoor store	Site and Factory Cleaning	Various impacts if released to environment. See data sheets for more details if required.
Hand Sanitiser 5l	10	10	Site Services Container	Staff Welfare	Various impacts if released to environment. See data sheets for more details if required. Only small amounts stored on site at one time.
Drain Cleaner 5l	5L	1L	Site Services Container	Drainage maintenance	Various impacts if released to environment. See data sheets for more details if required. Only small amounts stored on site at one time.
Urinal Blocks 3kg	4	1	Site Services Container	Staff Welfare	Various impacts if released to environment. See data sheets for more details if required. Only small amounts stored on site at one time.

Product	Maximum Quantities Used Per Year	Maximum Volumes/Tonnes Stored on Site at One Time	Storage Arrangements and Location	Fate of Raw Materials in the Facility (where will it be used)	Potential Environmental Impact
De-Foamer	15kg	15kg	Site Services Container	Site Operations	Various impacts if released to environment. See data sheets for more details if required. Only small amounts stored on site at one time.
Weedkiller 25kg	25kg	25kg	Site Services Container	Site Maintenance	Various impacts if released to environment. See data sheets for more details if required. Only small amounts stored on site at one time.
Flyspray Can	4	4	Site Services Container	Pest Management	Various impacts if released to environment. See data sheets for more details if required. Only small amounts stored on site at one time.
Bathroom Cleaner 750ml	12	8	Site Services Container	Site Maintenance	Various impacts if released to environment. See data sheets for more details if required. Only small amounts stored on site at one time.
Toilet Cleaner 1l	12	12	Site Services Container	Site Maintenance	Various impacts if released to environment. See data sheets for more details if required. Only small amounts stored on site at one time.
Air Freshener 500ml	12	4	Site Services Container	Staff Welfare	Various impacts if released to environment. See data sheets for more details if required. Only small amounts stored on site at one time.

Product	Maximum Quantities Used Per Year	Maximum Volumes/Tonnes Stored on Site at One Time	Storage Arrangements and Location	Fate of Raw Materials in the Facility (where will it be used)	Potential Environmental Impact
Laboratory					
Various Laboratory Chemicals See Appendix 1	See appendix 1	See appendix 1	Stored in small quantities in the lab in line with MSDS storage requirements.	Analytical activities in site lab	Various potential impacts listed on MSDS for individual chemicals. All waste chemicals collected and stored at site lab after use and collected for suitable offsite disposal.

Appendix 1 – List of Laboratory Chemicals

Product	Maximum Quantities Used Per Year	Maximum Volumes/Tonnes Stored on Site at One Time	Storage Arrangements	Fate of Raw Materials in the Facility (where will it be used)	Potential Environmental Impact
Laboratory					
COD Cuvette Test 5-60g/L Range, LCK914	68	N/A	In onsite lab storage facility according to MSDS Requirements.	For testing chemical oxygen demand. Recycled by Hach once used.	Various impacts if released to environment. See data sheets for more details if required. Only small amounts stored on site at one time in lab setting.
COD Cuvette Test 100-2000mg/L Range, CK514	11	N/A	In onsite lab storage facility according to MSDS Requirements.	For testing chemical oxygen demand. Recycled by Hach once used	Various impacts if released to environment. See data sheets for more details if required. Only small amounts stored on site at one time in lab setting.
	2	N/A	In onsite lab storage facility according to	Used for Karl Fischer moisture test in lab and HERO lab. Reagents taken	Various impacts if released to environment. See data sheets for more details if required. Only small amounts stored on site at one time in lab setting.

Product	Maximum Quantities Used Per Year	Maximum Volumes/Tonnes Stored on Site at One Time	Storage Arrangements	Fate of Raw Materials in the Facility (where will it be used)	Potential Environmental Impact
Hydranal Coulomat CG 10 x 5ml ampoule 34840 – 50ml			MSDS Requirements.	away for disposal when used.	
Hydranal Coulomat Oil Reagent for Coulometric KF Titration in Oils 34868-500ml	3	N/A	In onsite lab storage facility according to MSDS Requirements.	Used for Karl Fischer moisture test in lab and HERO lab. Reagents taken away for disposal when used.	Various impacts if released to environment. See data sheets for more details if required. Only small amounts stored on site at one time in lab setting.
Hydranal Coulomat Oil Reagent, 34868-500ml	2	N/A	In onsite lab storage facility according to MSDS Requirements.	Used for Karl Fischer moisture test in lab and HERO lab. Reagents taken away for disposal when used.	Various impacts if released to environment. See data sheets for more details if required. Only small amounts stored on site at one time in lab setting.
Hydranal Composite 5 KF Reagent, Fluka Ref 34805-1L	3	N/A	In onsite lab storage facility according to MSDS Requirements.	Used for Karl Fischer moisture test in lab and HERO lab. Reagents taken away for disposal when used.	Various impacts if released to environment. See data sheets for more details if required. Only small amounts stored on site at one time in lab setting.
Xanthan Gum G1253-100G	1	N/A	In onsite lab storage facility according to	Unopened – yet to be used	Various impacts if released to environment. See data sheets for more details if required. Only

Product	Maximum Quantities Used Per Year	Maximum Volumes/Tonnes Stored on Site at One Time	Storage Arrangements	Fate of Raw Materials in the Facility (where will it be used)	Potential Environmental Impact
			MSDS Requirements.		small amounts stored on site at one time in lab setting.
Sodium Hydroxide 0.1m Solution (2.5L)	49	N/A	In onsite lab storage facility according to MSDS Requirements.	Used to test free fatty acids in Lab (all labs) Waste taken off site for disposal	Various impacts if released to environment. See data sheets for more details if required. Only small amounts stored on site at one time in lab setting.
Isoproponal 1L PR14005	4	N/A	In onsite lab storage facility according to MSDS Requirements.	For cleaning purposes. Disposed down drain.	Various impacts if released to environment. See data sheets for more details if required. Only small amounts stored on site at one time in lab setting.
Methylated Spirit (6 x 1 L)	15	N/A	In onsite lab storage facility according to MSDS Requirements.	Used to test free fatty acids in lab (all labs). Waste taken off site for disposal	Various impacts if released to environment. See data sheets for more details if required. Only small amounts stored on site at one time in lab setting.
Methyl Nonadecanoate. Product No: N0460 5g	1	N/A	In onsite lab storage facility according to	Used as GC Std. in the lab. Waste taken off site for disposal	Various impacts if released to environment. See data sheets for more details if required. Only

Product	Maximum Quantities Used Per Year	Maximum Volumes/Tonnes Stored on Site at One Time	Storage Arrangements	Fate of Raw Materials in the Facility (where will it be used)	Potential Environmental Impact
			MSDS Requirements.		small amounts stored on site at one time in lab setting.
Sodium Sulphate (500g)	2	N/A	In onsite lab storage facility according to MSDS Requirements.	Used in GC analysis in lab Disposal in general waste	Various impacts if released to environment. See data sheets for more details if required. Only small amounts stored on site at one time in lab setting.
Teepol Detergent 4 x 2.5L CL04206	8	N/A	In onsite lab storage facility according to MSDS Requirements.	For cleaning purposes in lab. Disposed down drain	Various impacts if released to environment. See data sheets for more details if required. Only small amounts stored on site at one time in lab setting.
Acetone Technical Grade 32201 2.5L	4	N/A	In onsite lab storage facility according to MSDS Requirements.	Mainly used for cleaning. Karl Fischer Instrument Waste taken off site for disposal	Various impacts if released to environment. See data sheets for more details if required. Only small amounts stored on site at one time in lab setting.
Methanol 2.5L, 34860 – 2.5L-R	6	N/A	In onsite lab storage facility according to	Used in lab for GC analysis. Waste taken off site for disposal	Various impacts if released to environment. See data sheets for more details if required. Only

Product	Maximum Quantities Used Per Year	Maximum Volumes/Tonnes Stored on Site at One Time	Storage Arrangements	Fate of Raw Materials in the Facility (where will it be used)	Potential Environmental Impact
			MSDS Requirements.		small amounts stored on site at one time in lab setting.
Dry Methanol, Fluka, 2.5L Ref: 34741 – 2.5L	1	N/A	In onsite lab storage facility according to MSDS Requirements.	Used in Karl Fischer instrument in Hero lab. Waste taken off site for disposal	Various impacts if released to environment. See data sheets for more details if required. Only small amounts stored on site at one time in lab setting.
Heptane 2.5L 32287 – 2.5L	2	N/A	In onsite lab storage facility according to MSDS Requirements.	Used in Karl Fischer instrument in Hero lab. Waste taken off site for disposal	Various impacts if released to environment. See data sheets for more details if required. Only small amounts stored on site at one time in lab setting.
Phenolphthalein solution 500ml 34607 – 500ml	13	N/A	In onsite lab storage facility according to MSDS Requirements.	Indicator solution used in free fatty acid analysis in lab (all labs on site). Waste taken off site for disposal	Various impacts if released to environment. See data sheets for more details if required. Only small amounts stored on site at one time in lab setting.
Chloroform, Riedel-de HAEN	1	N/A	In onsite lab storage facility according to	Used in Karl Fischer instrument in HERO lab.	Various impacts if released to environment. See data sheets for more details if required. Only

Product	Maximum Quantities Used Per Year	Maximum Volumes/Tonnes Stored on Site at One Time	Storage Arrangements	Fate of Raw Materials in the Facility (where will it be used)	Potential Environmental Impact
Ref: 366919-1L			MSDS Requirements.	Waste taken off site for disposal	small amounts stored on site at one time in lab setting.
Kerosene 60710 – 2.5L	1	N/A	In onsite lab storage facility according to MSDS Requirements.	Moisture and impurities analysis in lab. Waste taken off site for disposal	Various impacts if released to environment. See data sheets for more details if required. Only small amounts stored on site at one time in lab setting.
Anisidine Value Control Solution Kit	1	N/A	In onsite lab storage facility according to MSDS Requirements.	Used in food lab instrument in lab. Waste taken off site for disposal	Various impacts if released to environment. See data sheets for more details if required. Only small amounts stored on site at one time in lab setting.
Pack of 10 Anisidine Value Tests Part No: 300503	2	N/A	In onsite lab storage facility according to MSDS Requirements.	Used in food lab instrument in lab. Taken off site for disposal	Various impacts if released to environment. See data sheets for more details if required. Only small amounts stored on site at one time in lab setting.
COD LCK914	72 boxes, 1800 tubes	N/A	In onsite lab storage facility according to	Lab	Various impacts if released to environment. See data sheets for more details if required. Only

Product	Maximum Quantities Used Per Year	Maximum Volumes/Tonnes Stored on Site at One Time	Storage Arrangements	Fate of Raw Materials in the Facility (where will it be used)	Potential Environmental Impact
			MSDS Requirements.		small amounts stored on site at one time in lab setting.
CODLCK514	11 boxes, 275 boxes	N/A	In onsite lab storage facility according to MSDS Requirements.	Lab	Various impacts if released to environment. See data sheets for more details if required. Only small amounts stored on site at one time in lab setting.
Sulphate Std, 1000 mg/L	1 box	N/A	In onsite lab storage facility according to MSDS Requirements.	Lab	Various impacts if released to environment. See data sheets for more details if required. Only small amounts stored on site at one time in lab setting.
Chemviron Carbon	1 kg	N/A	In onsite lab storage facility according to MSDS Requirements.	Lab	Various impacts if released to environment. See data sheets for more details if required. Only small amounts stored on site at one time in lab setting.
Peroxide & Diluent	0.5L	N/A	In onsite lab storage facility according to	Lab	Various impacts if released to environment. See data sheets for more details if required. Only

Product	Maximum Quantities Used Per Year	Maximum Volumes/Tonnes Stored on Site at One Time	Storage Arrangements	Fate of Raw Materials in the Facility (where will it be used)	Potential Environmental Impact
			MSDS Requirements.		small amounts stored on site at one time in lab setting.
Molecular Sieve	500g	N/A	In onsite lab storage facility according to MSDS Requirements.	Lab	Various impacts if released to environment. See data sheets for more details if required. Only small amounts stored on site at one time in lab setting.
Hydranal Coulomat AG	< 1L	N/A	In onsite lab storage facility according to MSDS Requirements.	Lab	Various impacts if released to environment. See data sheets for more details if required. Only small amounts stored on site at one time in lab setting.
Hydranal Water Std 0.1 PC	< 1L	N/A	In onsite lab storage facility according to MSDS Requirements.	Lab	Various impacts if released to environment. See data sheets for more details if required. Only small amounts stored on site at one time in lab setting.
Electrolyte TEABc 0.4mol/L	0.5L	N/A	In onsite lab storage facility according to	Lab	Various impacts if released to environment. See data sheets for more details if required. Only

Product	Maximum Quantities Used Per Year	Maximum Volumes/Tonnes Stored on Site at One Time	Storage Arrangements	Fate of Raw Materials in the Facility (where will it be used)	Potential Environmental Impact
			MSDS Requirements.		small amounts stored on site at one time in lab setting.
Sulphur in Mineral Oil Calibration Std	0.5L	N/A	In onsite lab storage facility according to MSDS Requirements.	Lab	Various impacts if released to environment. See data sheets for more details if required. Only small amounts stored on site at one time in lab setting.
Bromophenol Blue	0.5L	N/A	In onsite lab storage facility according to MSDS Requirements.	Lab	Various impacts if released to environment. See data sheets for more details if required. Only small amounts stored on site at one time in lab setting.
Calcium Chloride Dihydrate	500g	N/A	In onsite lab storage facility according to MSDS Requirements.	Lab	Various impacts if released to environment. See data sheets for more details if required. Only small amounts stored on site at one time in lab setting.
Potassium Phthalate Monobasic 60360	100g	N/A	In onsite lab storage facility according to	Lab	Various impacts if released to environment. See data sheets for more details if required. Only

Product	Maximum Quantities Used Per Year	Maximum Volumes/Tonnes Stored on Site at One Time	Storage Arrangements	Fate of Raw Materials in the Facility (where will it be used)	Potential Environmental Impact
			MSDS Requirements.		small amounts stored on site at one time in lab setting.
Xanthan Gum from Xanthanomas Campestris	100g	N/A	In onsite lab storage facility according to MSDS Requirements.	Lab	Various impacts if released to environment. See data sheets for more details if required. Only small amounts stored on site at one time in lab setting.
Potassium Hydroxide Pellets A.R.	1kg	N/A	In onsite lab storage facility according to MSDS Requirements.	Lab	Various impacts if released to environment. See data sheets for more details if required. Only small amounts stored on site at one time in lab setting.
Sodium Sulphate Anhydrous	1L	N/A	In onsite lab storage facility according to MSDS Requirements.	Lab	Various impacts if released to environment. See data sheets for more details if required. Only small amounts stored on site at one time in lab setting.
Antibumping Granules	1kg	N/A	In onsite lab storage facility according to	Lab	Various impacts if released to environment. See data sheets for more details if required. Only

Product	Maximum Quantities Used Per Year	Maximum Volumes/Tonnes Stored on Site at One Time	Storage Arrangements	Fate of Raw Materials in the Facility (where will it be used)	Potential Environmental Impact
			MSDS Requirements.		small amounts stored on site at one time in lab setting.
Sodium Hydroxide Pellets A.R.	1kg	N/A	In onsite lab storage facility according to MSDS Requirements.	Lab	Various impacts if released to environment. See data sheets for more details if required. Only small amounts stored on site at one time in lab setting.
Standard Oil	1L	N/A	In onsite lab storage facility according to MSDS Requirements.	Lab	Various impacts if released to environment. See data sheets for more details if required. Only small amounts stored on site at one time in lab setting.
Potassium phthalate monobasic 179922	500g	N/A	In onsite lab storage facility according to MSDS Requirements.	Lab	Various impacts if released to environment. See data sheets for more details if required. Only small amounts stored on site at one time in lab setting.
Phosphorous Std dissolved in oil	0.5L	N/A	In onsite lab storage facility according to	Lab	Various impacts if released to environment. See data sheets for more details if required. Only

Product	Maximum Quantities Used Per Year	Maximum Volumes/Tonnes Stored on Site at One Time	Storage Arrangements	Fate of Raw Materials in the Facility (where will it be used)	Potential Environmental Impact
			MSDS Requirements.		small amounts stored on site at one time in lab setting.
Sodium sulphite anhydrous	1L	N/A	In onsite lab storage facility according to MSDS Requirements.	Lab	Various impacts if released to environment. See data sheets for more details if required. Only small amounts stored on site at one time in lab setting.
1,2-Diaminoethane-N,N,N'-Tetra-acetic acid disodium salt	1L	N/A	In onsite lab storage facility according to MSDS Requirements.	Lab	Various impacts if released to environment. See data sheets for more details if required. Only small amounts stored on site at one time in lab setting.
Potassium hydrogen phthalate A.R.	1L	N/A	In onsite lab storage facility according to MSDS Requirements.	Lab	Various impacts if released to environment. See data sheets for more details if required. Only small amounts stored on site at one time in lab setting.
Sodium hydrogen carbonate air	1L	N/A	In onsite lab storage facility according to	Lab	Various impacts if released to environment. See data sheets for more details if required. Only

Product	Maximum Quantities Used Per Year	Maximum Volumes/Tonnes Stored on Site at One Time	Storage Arrangements	Fate of Raw Materials in the Facility (where will it be used)	Potential Environmental Impact
			MSDS Requirements.		small amounts stored on site at one time in lab setting.
Potassium Chloride A.R.	1L	N/A	In onsite lab storage facility according to MSDS Requirements.	Lab	Various impacts if released to environment. See data sheets for more details if required. Only small amounts stored on site at one time in lab setting.
Sodium hydroxide pellets L.R.	1kg	N/A	In onsite lab storage facility according to MSDS Requirements.	Lab	Various impacts if released to environment. See data sheets for more details if required. Only small amounts stored on site at one time in lab setting.
Sodium chloride	1L	N/A	In onsite lab storage facility according to MSDS Requirements.	Lab	Various impacts if released to environment. See data sheets for more details if required. Only small amounts stored on site at one time in lab setting.
Acetic Acid glacial 100%	Not in use	N/A	In onsite lab storage facility according to	Lab	Various impacts if released to environment. See data sheets for more details if required. Only

Product	Maximum Quantities Used Per Year	Maximum Volumes/Tonnes Stored on Site at One Time	Storage Arrangements	Fate of Raw Materials in the Facility (where will it be used)	Potential Environmental Impact
			MSDS Requirements.		small amounts stored on site at one time in lab setting.
Sodium std solution 100 mg/L	0.5L	N/A	In onsite lab storage facility according to MSDS Requirements.	Lab	Various impacts if released to environment. See data sheets for more details if required. Only small amounts stored on site at one time in lab setting.
Sodium reference std solution, 10 mg/L as sodium	0.5L	N/A	In onsite lab storage facility according to MSDS Requirements.	Lab	Various impacts if released to environment. See data sheets for more details if required. Only small amounts stored on site at one time in lab setting.
Electrode filling Solution 0.02M NH ₄ Cl	0.5L	N/A	In onsite lab storage facility according to MSDS Requirements.	Lab	Various impacts if released to environment. See data sheets for more details if required. Only small amounts stored on site at one time in lab setting.
Cleaning Solution	0.5L	N/A	In onsite lab storage facility according to	Lab	Various impacts if released to environment. See data sheets for more details if required. Only

Product	Maximum Quantities Used Per Year	Maximum Volumes/Tonnes Stored on Site at One Time	Storage Arrangements	Fate of Raw Materials in the Facility (where will it be used)	Potential Environmental Impact
			MSDS Requirements.		small amounts stored on site at one time in lab setting.
Hydrochloric acid	1L	N/A	In onsite lab storage facility according to MSDS Requirements.	Lab	Various impacts if released to environment. See data sheets for more details if required. Only small amounts stored on site at one time in lab setting.
Sulphuric acid 96%	1L	N/A	In onsite lab storage facility according to MSDS Requirements.	Lab	Various impacts if released to environment. See data sheets for more details if required. Only small amounts stored on site at one time in lab setting.
Sodium hydroxide	140L	N/A	In onsite lab storage facility according to MSDS Requirements.	Lab	Various impacts if released to environment. See data sheets for more details if required. Only small amounts stored on site at one time in lab setting.
Sodium hydroxide	140L	N/A	In onsite lab storage facility according to	Lab	Various impacts if released to environment. See data sheets for more details if required. Only

Product	Maximum Quantities Used Per Year	Maximum Volumes/Tonnes Stored on Site at One Time	Storage Arrangements	Fate of Raw Materials in the Facility (where will it be used)	Potential Environmental Impact
			MSDS Requirements.		small amounts stored on site at one time in lab setting.
Phosphoric acid L.R.	1L	N/A	In onsite lab storage facility according to MSDS Requirements.	Lab	Various impacts if released to environment. See data sheets for more details if required. Only small amounts stored on site at one time in lab setting.
Sulphur Std Solution 10,000 ppm	1L	N/A	In onsite lab storage facility according to MSDS Requirements.	Lab	Various impacts if released to environment. See data sheets for more details if required. Only small amounts stored on site at one time in lab setting.
Sulphur powder -325 mesh 99.5%	1kg	N/A	In onsite lab storage facility according to MSDS Requirements.	Lab	Various impacts if released to environment. See data sheets for more details if required. Only small amounts stored on site at one time in lab setting.
Citric Acid 99.5-100% anhydrous	1kg	N/A	In onsite lab storage facility according to	Lab	Various impacts if released to environment. See data sheets for more details if required. Only

Product	Maximum Quantities Used Per Year	Maximum Volumes/Tonnes Stored on Site at One Time	Storage Arrangements	Fate of Raw Materials in the Facility (where will it be used)	Potential Environmental Impact
			MSDS Requirements.		small amounts stored on site at one time in lab setting.
Phosphorous Std dissolved in oil	0.5L	N/A	In onsite lab storage facility according to MSDS Requirements.	Lab	Various impacts if released to environment. See data sheets for more details if required. Only small amounts stored on site at one time in lab setting.
Oleic Acid	1L	N/A	In onsite lab storage facility according to MSDS Requirements.	Lab	Various impacts if released to environment. See data sheets for more details if required. Only small amounts stored on site at one time in lab setting.
Leybold vacuum oil for rotary vacuum pump	5L	N/A	In onsite lab storage facility according to MSDS Requirements.	Lab	Various impacts if released to environment. See data sheets for more details if required. Only small amounts stored on site at one time in lab setting.
Potassium hydroxide	1L	N/A	In onsite lab storage facility according to	Lab	Various impacts if released to environment. See data sheets for more details if required. Only

Product	Maximum Quantities Used Per Year	Maximum Volumes/Tonnes Stored on Site at One Time	Storage Arrangements	Fate of Raw Materials in the Facility (where will it be used)	Potential Environmental Impact
			MSDS Requirements.		small amounts stored on site at one time in lab setting.
Glycerol L.R.	1L	N/A	In onsite lab storage facility according to MSDS Requirements.	Lab	Various impacts if released to environment. See data sheets for more details if required. Only small amounts stored on site at one time in lab setting.
Glycerol	1L	N/A	In onsite lab storage facility according to MSDS Requirements.	Lab	Various impacts if released to environment. See data sheets for more details if required. Only small amounts stored on site at one time in lab setting.
Glycerol	1L	N/A	In onsite lab storage facility according to MSDS Requirements.	Lab	Various impacts if released to environment. See data sheets for more details if required. Only small amounts stored on site at one time in lab setting.
Technical buffer pH 4.01	5L	N/A	In onsite lab storage facility according to	Lab	Various impacts if released to environment. See data sheets for more details if required. Only

Product	Maximum Quantities Used Per Year	Maximum Volumes/Tonnes Stored on Site at One Time	Storage Arrangements	Fate of Raw Materials in the Facility (where will it be used)	Potential Environmental Impact
			MSDS Requirements.		small amounts stored on site at one time in lab setting.
Technical buffer pH 7.00	5L	N/A	In onsite lab storage facility according to MSDS Requirements.	Lab	Various impacts if released to environment. See data sheets for more details if required. Only small amounts stored on site at one time in lab setting.
Technical buffer pH 10.01	2.5L	N/A	In onsite lab storage facility according to MSDS Requirements.	Lab	Various impacts if released to environment. See data sheets for more details if required. Only small amounts stored on site at one time in lab setting.
Conductivity calibration solution 5000 μ S/cm	0.5L	N/A	In onsite lab storage facility according to MSDS Requirements.	Lab	Various impacts if released to environment. See data sheets for more details if required. Only small amounts stored on site at one time in lab setting.
TDS calibration solution 1382 mg/L	0.5L	N/A	In onsite lab storage facility according to	Lab	Various impacts if released to environment. See data sheets for more details if required. Only

Product	Maximum Quantities Used Per Year	Maximum Volumes/Tonnes Stored on Site at One Time	Storage Arrangements	Fate of Raw Materials in the Facility (where will it be used)	Potential Environmental Impact
			MSDS Requirements.		small amounts stored on site at one time in lab setting.
Conductivity calibration solution 80000 $\mu\text{S}/\text{cm}$	0.5L	N/A	In onsite lab storage facility according to MSDS Requirements.	Lab	Various impacts if released to environment. See data sheets for more details if required. Only small amounts stored on site at one time in lab setting.
pH storage solution	0.5L	N/A	In onsite lab storage facility according to MSDS Requirements.	Lab	Various impacts if released to environment. See data sheets for more details if required. Only small amounts stored on site at one time in lab setting.
Conductivity calibration solution 1413 $\mu\text{S}/\text{cm}$	0.5L	N/A	In onsite lab storage facility according to MSDS Requirements.	Lab	Various impacts if released to environment. See data sheets for more details if required. Only small amounts stored on site at one time in lab setting.
Electrode cleaning solution	0.5L	N/A	In onsite lab storage facility according to	Lab	Various impacts if released to environment. See data sheets for more details if required. Only

Product	Maximum Quantities Used Per Year	Maximum Volumes/Tonnes Stored on Site at One Time	Storage Arrangements	Fate of Raw Materials in the Facility (where will it be used)	Potential Environmental Impact
			MSDS Requirements.		small amounts stored on site at one time in lab setting.
Potassium chloride AgCl ref Electrolyte	0.5L	N/A	In onsite lab storage facility according to MSDS Requirements.	Lab	Various impacts if released to environment. See data sheets for more details if required. Only small amounts stored on site at one time in lab setting.
Singlet Solution pack 2769820	0.5L	N/A	In onsite lab storage facility according to MSDS Requirements.	Lab	Various impacts if released to environment. See data sheets for more details if required. Only small amounts stored on site at one time in lab setting.
Singlet Solution pack 2769920	0.5L	N/A	In onsite lab storage facility according to MSDS Requirements.	Lab	Various impacts if released to environment. See data sheets for more details if required. Only small amounts stored on site at one time in lab setting.
Singlet Solution pack 2770020	0.5L	N/A	In onsite lab storage facility according to	Lab	Various impacts if released to environment. See data sheets for more details if required. Only

Product	Maximum Quantities Used Per Year	Maximum Volumes/Tonnes Stored on Site at One Time	Storage Arrangements	Fate of Raw Materials in the Facility (where will it be used)	Potential Environmental Impact
			MSDS Requirements.		small amounts stored on site at one time in lab setting.
Singlet Solution pack 2770120	0.5L	N/A	In onsite lab storage facility according to MSDS Requirements.	Lab	Various impacts if released to environment. See data sheets for more details if required. Only small amounts stored on site at one time in lab setting.
Singlet Solution pack 2770220	0.5L	N/A	In onsite lab storage facility according to MSDS Requirements.	Lab	Various impacts if released to environment. See data sheets for more details if required. Only small amounts stored on site at one time in lab setting.
Singlet Solution pack 2771320	0.5L	N/A	In onsite lab storage facility according to MSDS Requirements.	Lab	Various impacts if released to environment. See data sheets for more details if required. Only small amounts stored on site at one time in lab setting.
Singlet Solution pack 2771420	0.5L	N/A	In onsite lab storage facility according to	Lab	Various impacts if released to environment. See data sheets for more details if required. Only

Product	Maximum Quantities Used Per Year	Maximum Volumes/Tonnes Stored on Site at One Time	Storage Arrangements	Fate of Raw Materials in the Facility (where will it be used)	Potential Environmental Impact
			MSDS Requirements.		small amounts stored on site at one time in lab setting.
Singlet Solution pack 2771520	0.5L	N/A	In onsite lab storage facility according to MSDS Requirements.	Lab	Various impacts if released to environment. See data sheets for more details if required. Only small amounts stored on site at one time in lab setting.
Potassium chloride calibration solution red 200 $\mu\text{S}/\text{cm}$	2.5L	N/A	In onsite lab storage facility according to MSDS Requirements.	Lab	Various impacts if released to environment. See data sheets for more details if required. Only small amounts stored on site at one time in lab setting.
Sodium sulphate Green 2000 $\mu\text{S}/\text{cm}$	500g	N/A	In onsite lab storage facility according to MSDS Requirements.	Lab	Various impacts if released to environment. See data sheets for more details if required. Only small amounts stored on site at one time in lab setting.
Multi purpose detergent	200L	N/A	In onsite lab storage facility according to	Lab	Various impacts if released to environment. See data sheets for more details if required. Only

Product	Maximum Quantities Used Per Year	Maximum Volumes/Tonnes Stored on Site at One Time	Storage Arrangements	Fate of Raw Materials in the Facility (where will it be used)	Potential Environmental Impact
			MSDS Requirements.		small amounts stored on site at one time in lab setting.
Acetone	6L	N/A	In onsite lab storage facility according to MSDS Requirements.	Lab	Various impacts if released to environment. See data sheets for more details if required. Only small amounts stored on site at one time in lab setting.
Diethyl ether	2.5L	N/A	In onsite lab storage facility according to MSDS Requirements.	Lab	Various impacts if released to environment. See data sheets for more details if required. Only small amounts stored on site at one time in lab setting.
Baron trifluoride-methanol-complex solution	1L	N/A	In onsite lab storage facility according to MSDS Requirements.	Lab	Various impacts if released to environment. See data sheets for more details if required. Only small amounts stored on site at one time in lab setting.
Petroleum ether	5L	N/A	In onsite lab storage facility according to	Lab	Various impacts if released to environment. See data sheets for more details if required. Only

Product	Maximum Quantities Used Per Year	Maximum Volumes/Tonnes Stored on Site at One Time	Storage Arrangements	Fate of Raw Materials in the Facility (where will it be used)	Potential Environmental Impact
			MSDS Requirements.		small amounts stored on site at one time in lab setting.
Heptane	8L	N/A	In onsite lab storage facility according to MSDS Requirements.	Lab	Various impacts if released to environment. See data sheets for more details if required. Only small amounts stored on site at one time in lab setting.
Ethanol	5L	N/A	In onsite lab storage facility according to MSDS Requirements.	Lab	Various impacts if released to environment. See data sheets for more details if required. Only small amounts stored on site at one time in lab setting.
Hydranal Xylene	2.5L	N/A	In onsite lab storage facility according to MSDS Requirements.	Lab	Various impacts if released to environment. See data sheets for more details if required. Only small amounts stored on site at one time in lab setting.
Hydranal Coulomat Oil	3L	N/A	In onsite lab storage facility according to	Lab	Various impacts if released to environment. See data sheets for more details if required. Only

Product	Maximum Quantities Used Per Year	Maximum Volumes/Tonnes Stored on Site at One Time	Storage Arrangements	Fate of Raw Materials in the Facility (where will it be used)	Potential Environmental Impact
			MSDS Requirements.		small amounts stored on site at one time in lab setting.
Phenolphthalein solution	5L	N/A	In onsite lab storage facility according to MSDS Requirements.	Lab	Various impacts if released to environment. See data sheets for more details if required. Only small amounts stored on site at one time in lab setting.
Hydranal Coulomat CG	100ml	N/A	In onsite lab storage facility according to MSDS Requirements.	Lab	Various impacts if released to environment. See data sheets for more details if required. Only small amounts stored on site at one time in lab setting.
Methanol	20L	N/A	In onsite lab storage facility according to MSDS Requirements.	Lab	Various impacts if released to environment. See data sheets for more details if required. Only small amounts stored on site at one time in lab setting.
Kerosene	3L	N/A	In onsite lab storage facility according to	Lab	Various impacts if released to environment. See data sheets for more details if required. Only

Product	Maximum Quantities Used Per Year	Maximum Volumes/Tonnes Stored on Site at One Time	Storage Arrangements	Fate of Raw Materials in the Facility (where will it be used)	Potential Environmental Impact
			MSDS Requirements.		small amounts stored on site at one time in lab setting.
Hydranal Methanol Dry	3L	N/A	In onsite lab storage facility according to MSDS Requirements.	Lab	Various impacts if released to environment. See data sheets for more details if required. Only small amounts stored on site at one time in lab setting.
Propan-2-ol	4L	N/A	In onsite lab storage facility according to MSDS Requirements.	Lab	Various impacts if released to environment. See data sheets for more details if required. Only small amounts stored on site at one time in lab setting.
Methylated Spirit	30L	N/A	In onsite lab storage facility according to MSDS Requirements.	Lab	Various impacts if released to environment. See data sheets for more details if required. Only small amounts stored on site at one time in lab setting.
Ethanol 25L drum	200L	N/A	In onsite lab storage facility according to	Lab	Various impacts if released to environment. See data sheets for more details if required. Only

Product	Maximum Quantities Used Per Year	Maximum Volumes/Tonnes Stored on Site at One Time	Storage Arrangements	Fate of Raw Materials in the Facility (where will it be used)	Potential Environmental Impact
			MSDS Requirements.		small amounts stored on site at one time in lab setting.
Heptadecanoic acid	100g	N/A	In onsite lab storage facility according to MSDS Requirements.	Lab	Various impacts if released to environment. See data sheets for more details if required. Only small amounts stored on site at one time in lab setting.
Nonadecanoic acid (C19:0)	50g	N/A	In onsite lab storage facility according to MSDS Requirements.	Lab	Various impacts if released to environment. See data sheets for more details if required. Only small amounts stored on site at one time in lab setting.
Vitamin E 97%	0.5L	N/A	In onsite lab storage facility according to MSDS Requirements.	Lab	Various impacts if released to environment. See data sheets for more details if required. Only small amounts stored on site at one time in lab setting.
cis-10-Heptadecanoic acid methyl ester	0.5L	N/A	In onsite lab storage facility according to	Lab	Various impacts if released to environment. See data sheets for more details if required. Only

Product	Maximum Quantities Used Per Year	Maximum Volumes/Tonnes Stored on Site at One Time	Storage Arrangements	Fate of Raw Materials in the Facility (where will it be used)	Potential Environmental Impact
			MSDS Requirements.		small amounts stored on site at one time in lab setting.
Chloride LCK311	0.5L	N/A	In onsite lab storage facility according to MSDS Requirements.	Lab	Various impacts if released to environment. See data sheets for more details if required. Only small amounts stored on site at one time in lab setting.
Hydranal water std 0.1	0.5L	N/A	In onsite lab storage facility according to MSDS Requirements.	Lab	Various impacts if released to environment. See data sheets for more details if required. Only small amounts stored on site at one time in lab setting.
p-Anisidine control solution kit	0.1L	N/A	In onsite lab storage facility according to MSDS Requirements.	Lab	Various impacts if released to environment. See data sheets for more details if required. Only small amounts stored on site at one time in lab setting.
p-Anisidine control solution 10-test kit	0.1L	N/A	In onsite lab storage facility according to	Lab	Various impacts if released to environment. See data sheets for more details if required. Only

Product	Maximum Quantities Used Per Year	Maximum Volumes/Tonnes Stored on Site at One Time	Storage Arrangements	Fate of Raw Materials in the Facility (where will it be used)	Potential Environmental Impact
			MSDS Requirements.		small amounts stored on site at one time in lab setting.
Total phosphorous 1000mg/L	0.5L	N/A	In onsite lab storage facility according to MSDS Requirements.	Lab	Various impacts if released to environment. See data sheets for more details if required. Only small amounts stored on site at one time in lab setting.
Methyl heptadecanoate	5g	N/A	In onsite lab storage facility according to MSDS Requirements.	Lab	Various impacts if released to environment. See data sheets for more details if required. Only small amounts stored on site at one time in lab setting.
Methyl heptadecanoate	5g	N/A	In onsite lab storage facility according to MSDS Requirements.	Lab	Various impacts if released to environment. See data sheets for more details if required. Only small amounts stored on site at one time in lab setting.
Hydral Composite 5	5L	N/A	In onsite lab storage facility according to	Lab	Various impacts if released to environment. See data sheets for more details if required. Only

Product	Maximum Quantities Used Per Year	Maximum Volumes/Tonnes Stored on Site at One Time	Storage Arrangements	Fate of Raw Materials in the Facility (where will it be used)	Potential Environmental Impact
			MSDS Requirements.		small amounts stored on site at one time in lab setting.
WCS					
C32 – Pumpover	500L	300L	Stored indoors in Bunded Tank	Water analysis (Currently Not Used)	Various impacts if released to environment. See data sheets for more details if required. Only small amounts stored on site at one time in lab setting.
Oxscav 35 – Pumpover	12-1500L	300L	Stored in Bunded Tank Stored inside	Water analysis (Currently Not Used)	Various impacts if released to environment. See data sheets for more details if required. Only small amounts stored on site at one time in lab setting.
Disperse 3F – Pumpover	500L	300L	Stored in Bunded Tank Stored inside	Water analysis (Currently Not Used)	Various impacts if released to environment. See data sheets for more details if required. Only small amounts stored on site at one time in lab setting.
RLT 1 – Pumpover	200L	500L	Stored in Bunded Tank Stored inside	Water analysis (Currently Not Used)	Various impacts if released to environment. See data sheets for more details if required. Only small amounts stored on site at one time in lab setting.

Product	Maximum Quantities Used Per Year	Maximum Volumes/Tonnes Stored on Site at One Time	Storage Arrangements	Fate of Raw Materials in the Facility (where will it be used)	Potential Environmental Impact
Envirobac ABT 1 – Pumpover	500L	300L	Stored in Bunded Tank Stored inside	Water analysis (Cooling Tower)	Various impacts if released to environment. See data sheets for more details if required. Only small amounts stored on site at one time in lab setting.
Envirobac ABT 2 – Pumpover	400L	200L	Stored Bunded Tank Stored Inside	Water analysis (Cooling Tower)	Various impacts if released to environment. See data sheets for more details if required. Only small amounts stored on site at one time in lab setting.
Envirobac ABT 2 – 25kg	500kg	100kg	Chemical Dosing Bay Integrally bunded Pre-Fabricated Station Stored Inside	Water analysis (Cooling Tower)	Various impacts if released to environment. See data sheets for more details if required. Only small amounts stored on site at one time in lab setting.
Envirohib 400 – Bio – Pumpover	200L	50L	Chemical Dosing Bay Integrally bunded	Water analysis (Cooling Tower)	Various impacts if released to environment. See data sheets for more details if required. Only small amounts stored on site at one time in lab setting.

Product	Maximum Quantities Used Per Year	Maximum Volumes/Tonnes Stored on Site at One Time	Storage Arrangements	Fate of Raw Materials in the Facility (where will it be used)	Potential Environmental Impact
			Prefabricated Station Stored Inside		
Biosperse 2 – 25kg Drums	50kg	25Kg	Chemical Dosing Bay Integrally bundled Pre-Fabricated Station Stored Inside	Water analysis (Cooling Tower)	Various impacts if released to environment. See data sheets for more details if required. Only small amounts stored on site at one time in lab setting.
Multitreat 2 Plus – 25kg	1625kg	200Kg	Chemical Dosing Bay Integrally bundled Pre-Fabricated Station Stored Inside	Water analysis (Boiler but Currently Not Used)	Various impacts if released to environment. See data sheets for more details if required. Only small amounts stored on site at one time in lab setting.

Product	Maximum Quantities Used Per Year	Maximum Volumes/Tonnes Stored on Site at One Time	Storage Arrangements	Fate of Raw Materials in the Facility (where will it be used)	Potential Environmental Impact
Mutitreat 25F – 25kg	500kg	100Kg	Chemical Dosing Bay Integrally bunded Pre-Fabricated Station Stored Inside	Water analysis (Boiler)	Various impacts if released to environment. See data sheets for more details if required. Only small amounts stored on site at one time in lab setting.
Citric Acid 50% 2t	3t	2t	IBCs in Outside Bunded Area	Used in refinery	Can cause irritation to eyes if comes in contact. May react with metals, oxidizing agents, bases or reducing agents. Damaging to aquatic ecosystems if released to surface water.
Caustic 33% 4t	5t	4t	IBCs in Outside Bunded Area	Used in Refinery	May cause skin burns and eye damage if comes into contact. Damaging to aquatic ecosystems if released to surface water.