

The logo for IGas Energy features the text "IGas" in a large, bold, black sans-serif font, with "Energy" in a smaller, black sans-serif font directly below it. To the right of the text is a stylized graphic consisting of two overlapping green triangles. The larger triangle is positioned below and to the right of the smaller one, with their top vertices meeting at a point.

IGas
Energy

Island Gas Limited

Albury Wellsite

Production Operations Incorporating Hydrogen Production

Environmental Permit Application

Site Plans

SITE LOCATION AND LAYOUT PLANS

| DOCUMENT TITLE | DOCUMENT REFERENCE |
|------------------------|---------------------|
| Site Location Plan | ZG-IGAS-ALB-SLP-01 |
| Production Layout Plan | ZG-IGAS-ALB-PROD-01 |



KEY:
PERMIT BOUNDARY



NOTES:

| REVISION HISTORY | | | | |
|------------------|-------|----|--------------------|-----|
| - | - | - | - | - |
| - | - | - | - | - |
| - | - | - | - | - |
| 0 | JUN21 | JF | ORIGINAL FOR ISSUE | JF |
| REV | DATE | BY | DETAILS | APR |

ZETLAND GROUP
FROM CONCEPTION TO COMPLETION
ZETLAND GROUP LIMITED
THE INNOVATION CENTRE, KIRKLEATHAM BUSINESS PARK, REDCAR, TS10 5SH
T: +44(0)1642 77726 E: info@zetlandgroup.com W: www.zetlandgroup.com
Registered in England No. 0564493. Registered office: The Innovation Centre, Kirkleatham Business Park, Redcar, TS10 5SH

THIS DOCUMENT IS THE PROPERTY OF ZETLAND GROUP LIMITED. IT CONTAINS PROPRIETARY AND CONFIDENTIAL INFORMATION WHICH MUST NOT BE DUPLICATED, USED OR DISCLOSED OTHER THAN AS EXPRESSLY AUTHORISED BY ZETLAND GROUP LIMITED OR ITS REPRESENTATIVE. © 2021

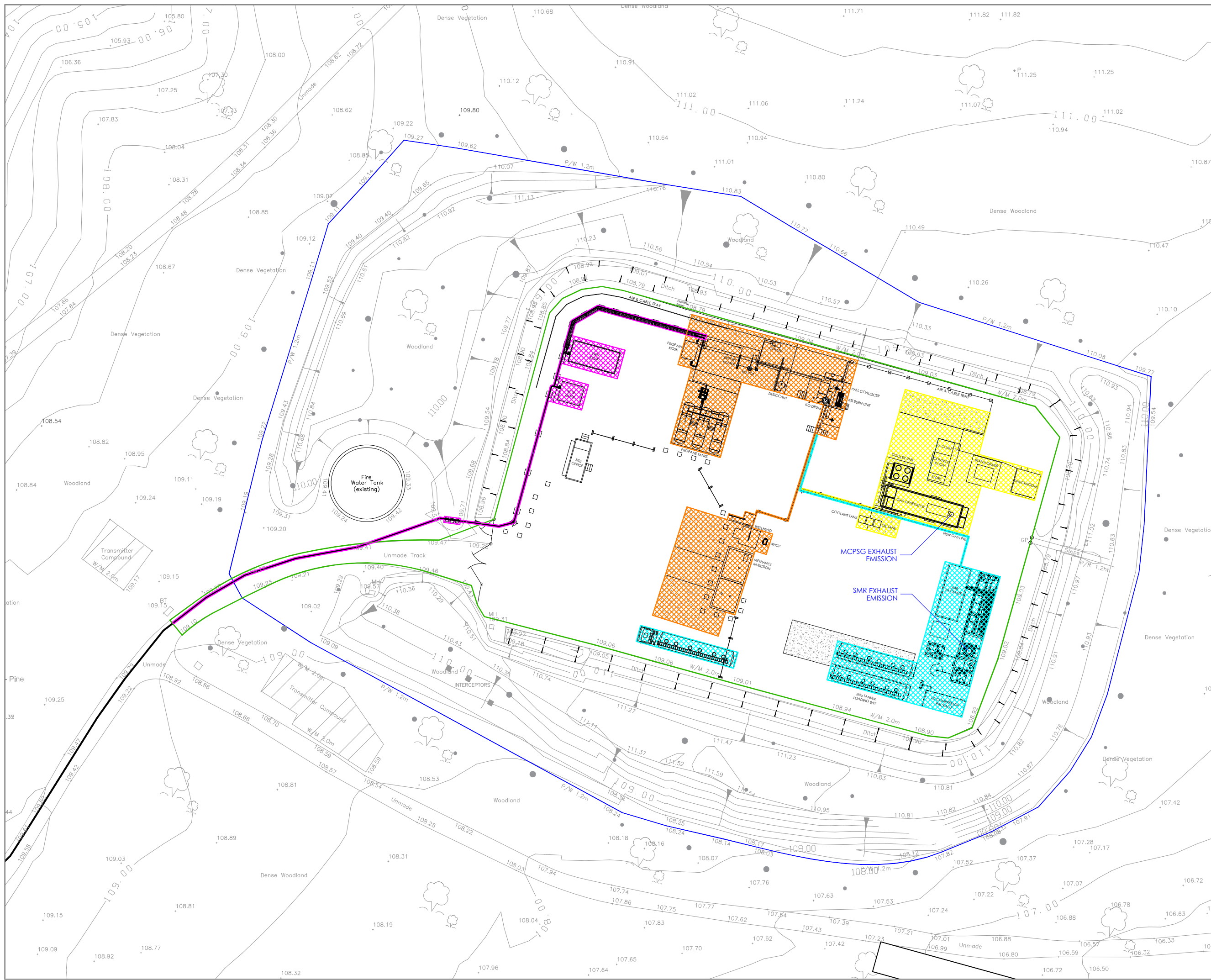
SITE: ALBURY WELLSITE

PROJECT: ALBURY PRODUCTION OPERATIONS

TITLE: SITE LOCATION PLAN

CLIENT: IGAS ENERGY PLC

Scale: 1:10,000 DWG. No:
Size: A3 ZG-IGAS-ALB-SLP-01
Sheet: 1 of 1



- KEY:**
- PERMIT BOUNDARY
 - LAND WITHIN THE APPLICANT'S CONTROL
 - WELLHEAD & GAS CONDITION PLANT (EXISTING)
 - OUTPUT 1 (ELECTRICITY PRODUCTION) (EXISTING)
 - OUTPUT 2 (HYDROGEN PRODUCTION)
 - OUTPUT 3 (GAS EXPORT) (EXISTING)

NOTES:

MCPSG: MEDIUM COMBUSTION PLANT SPECIFIED GENERATOR
 NGR: 506203E
 147197N

SMR: STEAM METHANE REFORMATION
 NGR: 506205E
 147177N

| REVISION HISTORY | | | | |
|------------------|-------|----|--------------------|-----|
| - | - | - | - | - |
| - | - | - | - | - |
| - | - | - | - | - |
| 0 | JUN21 | JF | ORIGINAL FOR ISSUE | JF |
| REV | DATE | BY | DETAILS | APR |

ZETLAND GROUP
 FROM CONCEPTION TO COMPLETION

ZETLAND GROUP LIMITED
 THE INNOVATION CENTRE, KIRKLEATHAM BUSINESS PARK, REDCAR, TS10 5SH
 T: +44(0)1642 777726 E: info@zetlandgroup.com W: www.zetlandgroup.com
 Registered in England No. 0554493. Registered office: The Innovation Centre, Kirkleatham Business Park, Redcar, TS10 5SH

THIS DOCUMENT IS THE PROPERTY OF ZETLAND GROUP LIMITED. IT CONTAINS PROPRIETARY AND CONFIDENTIAL INFORMATION WHICH MUST NOT BE DUPLICATED, USED OR DISCLOSED OTHER THAN AS EXPRESSLY AUTHORISED BY ZETLAND GROUP LIMITED OR ITS REPRESENTATIVE © 2021

SITE: ALBURY WELLSITE

PROJECT: ALBURY PRODUCTION OPERATIONS

TITLE: PRODUCTION LAYOUT PLAN

CLIENT: IGAS ENERGY PLC

| | | | |
|--------|--------|----------|---------------------|
| Scale: | 1:500 | DWG. No: | ZG-IGAS-ALB-PROD-01 |
| Size: | A3 | | |
| Sheet: | 1 of 1 | | |