

BLANDFORD WASTE MANAGEMENT CENTRE
W&S Waste Management Ltd

NON TECHNICAL SUMMARY



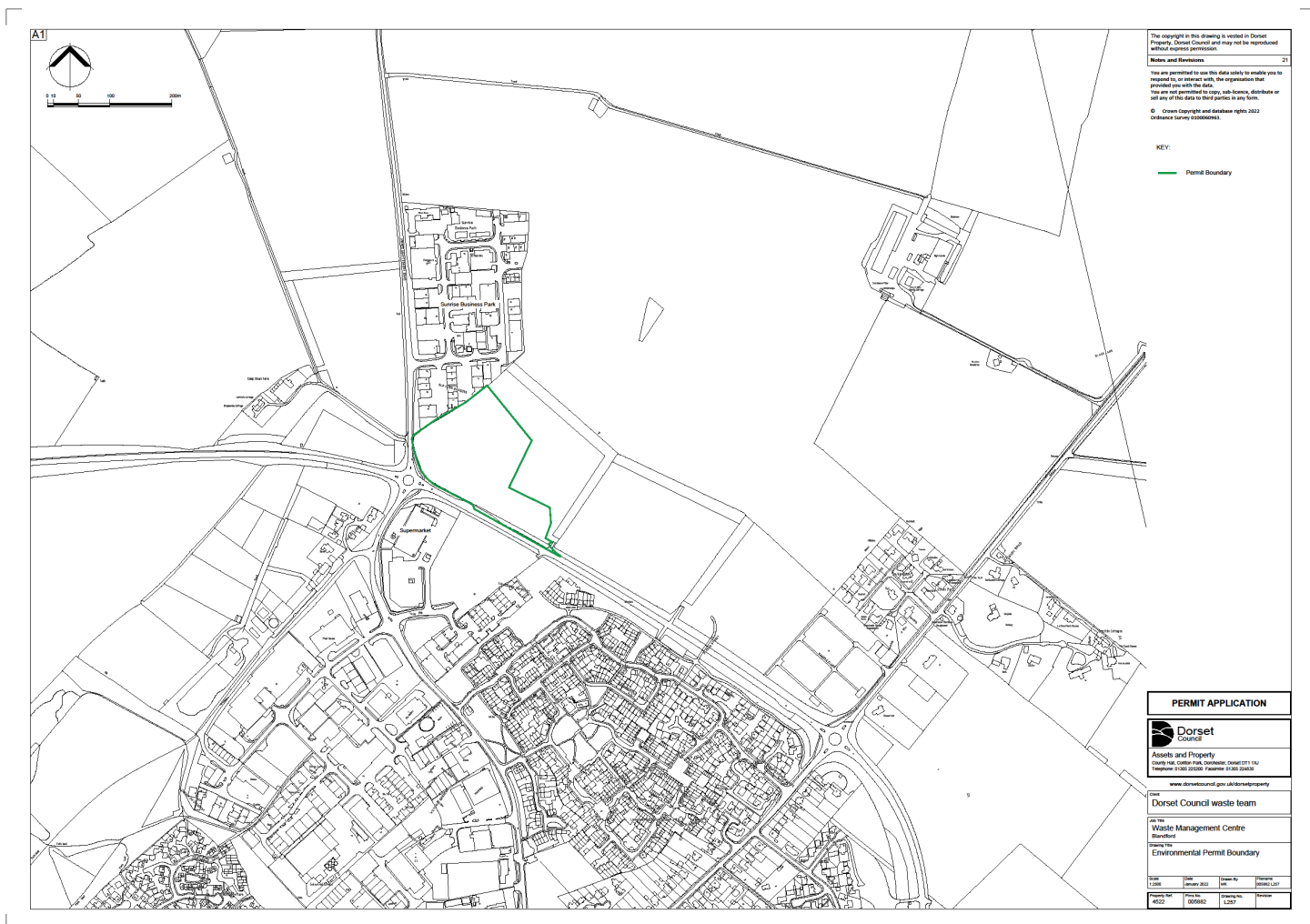
Version 7.0
February 2024

1. Introduction

W&S Waste Management Ltd have won the contract to operate the Blandford Waste Management Centre. This facility is being construction by Dorset Council. The Site is located on the outskirts of Blandford at National Grid Reference ST 890 082 (see Drawing No L257).

2. Location

The facility is currently an agricultural field located to the north of Blandford bypass, to the south east of Sunrise Business Park. The waste facility is located within a larger overall Site complex which includes the access road, landscaping features and drainage ponds for the sustainable drainage system.



3. Activities

The facility will provide :

- 1) a Household Recycling Centre (HRC) taking hazardous waste.
- 2) The development will also include a household, commercial and industrial waste transfer station (WTS) which will receive waste and recycling collected via kerbside collections (both from householders and commercial waste collections) and will provide a facility for bulking up for onward transportation. The WTS will also bulk up items received via the HRC. Treatment processes on site will be limited to baling within the WTS.

4. Waste Types

It is proposed to accept a limited range of hazardous wastes at the Site such as waste oils, asbestos and WEEE, along with the usual household waste types i.e. mixed household and separate recyclables along with rubble, green waste, metals etc (see 'Waste Types List' document In Appendix 1 for details). There will also be commercial waste delivered to the site which is collected along with the household kerb side collections or via separate commercial waste services, which are operated under Council contracts. These are generally 'household' type wastes in nature but may, at times, be quite diverse.

5. Site Surroundings and Receptors

The Site is located within the Cranborne Chase AONB.

The closest residential properties to the proposed development are those located on Kites Corner and Bracewell Close, off Gurkha Road. The properties on Kites Corner are approximately 175m south west of the closest operational element of the WMC and those on Bracewell Close are approximately 230m to the south east.

The Site is underlain by a Principal Aquifer of the White Chalk Subgroup. The Site is not located within a designated groundwater Source Protection Zone,

The closest surface water features to the Site are the Rover Stour and the Pimperne Brook (a tributary of the River Stour) located approximately 1.2km to the south-west and east of the Site, respectively.

6. Site Layout and visualisation

Drawing Nos. L256 and 1553



Artist's Impressions:
Computer Generated Images



Artist's Impression Sketch: South east birds eye view



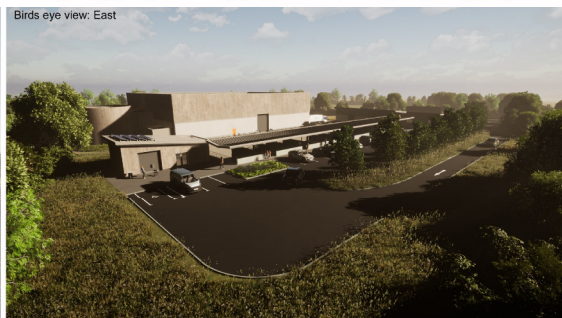
Section AA: View north east



Section BB: View north west



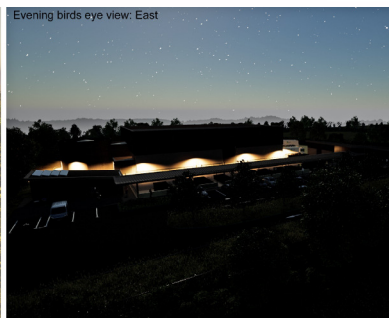
Junction of the A350 Bypass



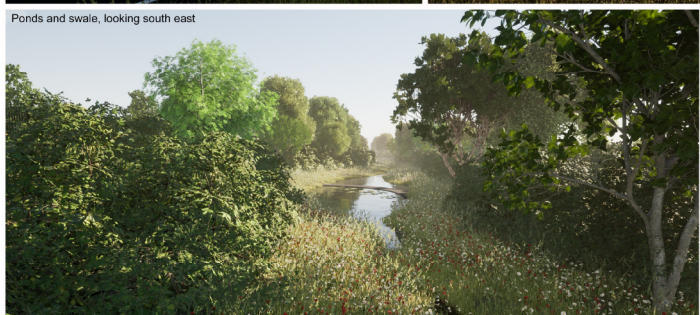
Birds eye view: East



Birds eye view: North



Evening birds eye view: East



Ponds and swale, looking south east



Household Recycling Centre



Ponds and swale, looking north west

PLANNING



Assets and Property
County Hall, Colton Park, Dorchester, Dorset DT1 1XJ
Telephone: 01305 225200 Facsimile: 01305 224935

www.dorsetcouncil.gov.uk/assetsandproperty

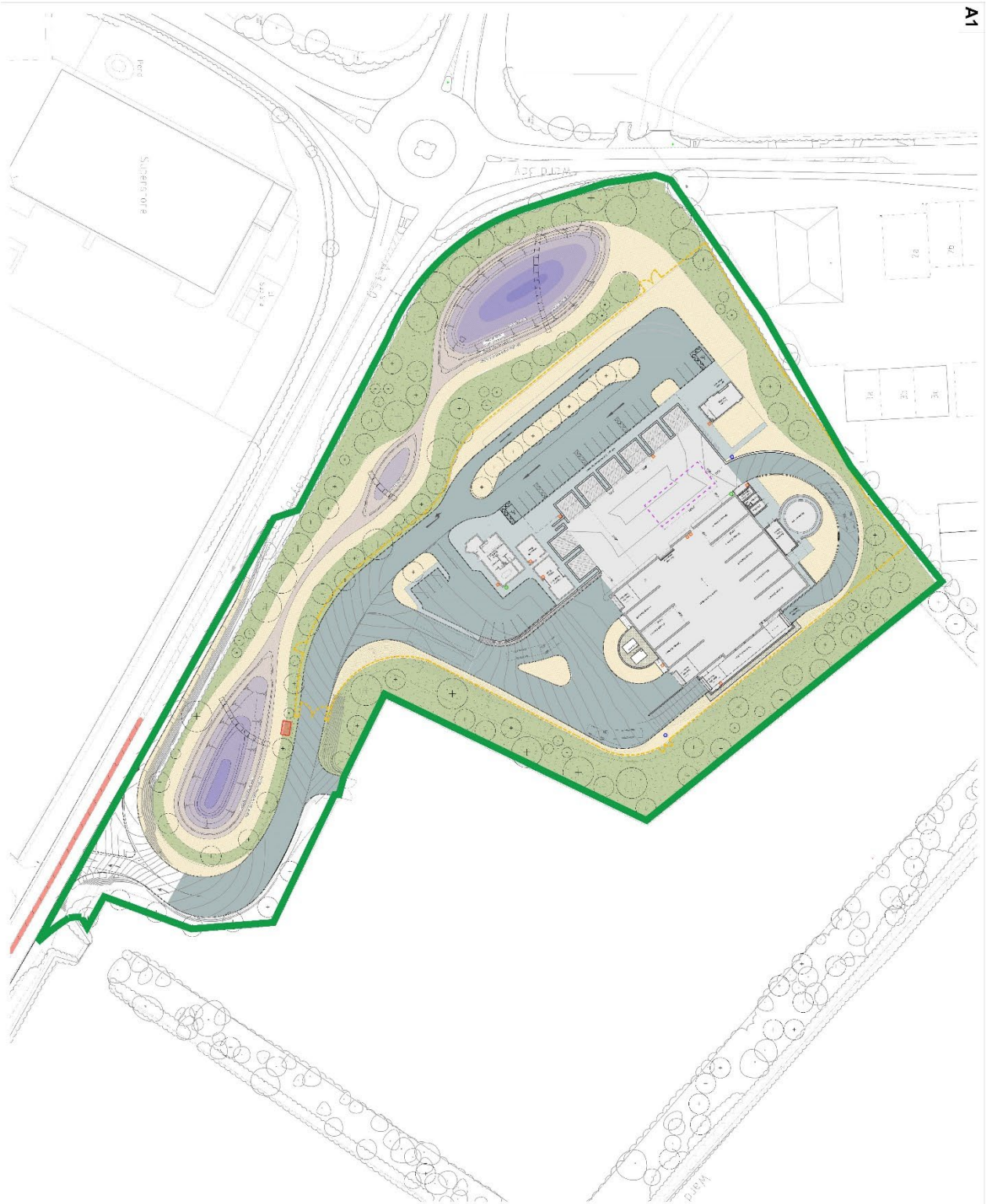
Client
Dorset Council waste team

Job Title
**Blandford Waste Management Centre
Blandford**

Drawing Title
Visualisations

Scale NTS	Date Feb 2021	Drawn By AZ	Filename 005882_L255
--------------	------------------	----------------	-------------------------

Priority Ref 4522	Plan No 005882	Drawing No L255	Revision
----------------------	-------------------	--------------------	----------



A1

Notes:

This copyright in this drawing is vested in Assets and without express permission may not be reproduced or used in any way for any purpose other than that for which it was prepared.

Key:

- Proposed Native Planting
- Proposed Willow Mats
- Mandated new vehicular
- Mandated steel structure
- Concrete surface
- SLOD basin
- General
- Former Applicant Boundary
- Security Fence: 2m m, height
- Quarrelwe stone 100m³ capacity
- Location of new bins (not actual size)
- Location of new houses (not actual size)
- Location of beam field (not actual size)
- All areas not showing hatched
- Location of steel pile (not actual size)
- Location of steel pile (not actual size)
- Location of steel pile (not actual size)

Assets and Property

Dorsel
CERAMIC
AGENTS & PROPERTY

For further information contact: 01258 321 060/0258 492 021
100, 102, 104, 106, 108, 110, 112, 114, 116, 118, 120, 122, 124, 126, 128, 130, 132, 134, 136, 138, 140, 142, 144, 146, 148, 150, 152, 154, 156, 158, 160, 162, 164, 166, 168, 170, 172, 174, 176, 178, 180, 182, 184, 186, 188, 190, 192, 194, 196, 198, 200, 202, 204, 206, 208, 210, 212, 214, 216, 218, 220, 222, 224, 226, 228, 230, 232, 234, 236, 238, 240, 242, 244, 246, 248, 250, 252, 254, 256, 258, 260, 262, 264, 266, 268, 270, 272, 274, 276, 278, 280, 282, 284, 286, 288, 290, 292, 294, 296, 298, 300, 302, 304, 306, 308, 310, 312, 314, 316, 318, 320, 322, 324, 326, 328, 330, 332, 334, 336, 338, 340, 342, 344, 346, 348, 350, 352, 354, 356, 358, 360, 362, 364, 366, 368, 370, 372, 374, 376, 378, 380, 382, 384, 386, 388, 390, 392, 394, 396, 398, 400, 402, 404, 406, 408, 410, 412, 414, 416, 418, 420, 422, 424, 426, 428, 430, 432, 434, 436, 438, 440, 442, 444, 446, 448, 450, 452, 454, 456, 458, 460, 462, 464, 466, 468, 470, 472, 474, 476, 478, 480, 482, 484, 486, 488, 490, 492, 494, 496, 498, 500, 502, 504, 506, 508, 510, 512, 514, 516, 518, 520, 522, 524, 526, 528, 530, 532, 534, 536, 538, 540, 542, 544, 546, 548, 550, 552, 554, 556, 558, 560, 562, 564, 566, 568, 570, 572, 574, 576, 578, 580, 582, 584, 586, 588, 590, 592, 594, 596, 598, 600, 602, 604, 606, 608, 610, 612, 614, 616, 618, 620, 622, 624, 626, 628, 630, 632, 634, 636, 638, 640, 642, 644, 646, 648, 650, 652, 654, 656, 658, 660, 662, 664, 666, 668, 670, 672, 674, 676, 678, 680, 682, 684, 686, 688, 690, 692, 694, 696, 698, 700, 702, 704, 706, 708, 710, 712, 714, 716, 718, 720, 722, 724, 726, 728, 730, 732, 734, 736, 738, 740, 742, 744, 746, 748, 750, 752, 754, 756, 758, 760, 762, 764, 766, 768, 770, 772, 774, 776, 778, 780, 782, 784, 786, 788, 790, 792, 794, 796, 798, 800, 802, 804, 806, 808, 810, 812, 814, 816, 818, 820, 822, 824, 826, 828, 830, 832, 834, 836, 838, 840, 842, 844, 846, 848, 850, 852, 854, 856, 858, 860, 862, 864, 866, 868, 870, 872, 874, 876, 878, 880, 882, 884, 886, 888, 890, 892, 894, 896, 898, 900, 902, 904, 906, 908, 910, 912, 914, 916, 918, 920, 922, 924, 926, 928, 930, 932, 934, 936, 938, 940, 942, 944, 946, 948, 950, 952, 954, 956, 958, 960, 962, 964, 966, 968, 970, 972, 974, 976, 978, 980, 982, 984, 986, 988, 990, 992, 994, 996, 998, 1000

Client: Dorset Council - waste team
Job Title: Remediation of Waste Transfer Station & Quarry Site
Drawing No: 22
Scale: 1:500

7. Key technical standards

The facility will comply with the technical standards specified by the Environment Agency in their guidance documents :

- H4 Odour Management. How to comply with your environmental permit.
- Guidance : Control and Monitoring of emissions for your environmental permit.
- Non Hazardous and inert waste : appropriate measures for permitted facilities.
- Chemical waste : appropriate measures for permitted facilities.
- Waste Electrical and Electronic equipment (WEEE) waste : appropriate measures for permitted facilities.
- Biological waste treatment: appropriate measures for permitted facilities.
- TGN M17 Monitoring particulate matter in ambient air around waste facilities.

8. Pollution Control Measures

A number of measures have been designed into the site to prevent or reduce the potential for pollution to arise from activities at the site. These can be summarised as :

Site infrastructure

The Waste Management Centre will be built to a high standard with all surfaces such as access roads, the Household Recycling Center and yard areas, hard-surfaced and with a drainage system designed with a comprehensive pollution control system which includes a series of separators, filters and attenuation basins that will significantly attenuate any potential contaminated site run off, effectively preventing pollutants from leaving the site.

All waste transfer station (WTS) activities are undertaken in a building. The building will have a negative pressure environment with automatic, fast-closing doors. Doorways and openings have been designed in a way that prevents through-drafts so reducing the risk of odour and dust emissions from WTS activities.

As there will be no unmade ground and muddy areas on Site for vehicles to drive over, there will be no risk of muddy track-out onto the highway. The fully surfaced site helps prevent dust being generated by site traffic and also makes a surface which is easy to sweep and so keep clean.

As the WTS is within a building there will be no bulking up of containers outside the building or loading of waste into containers outside the building. The only activities which take place outside the building will be individuals putting household waste into containers or skips, and containers being moved into the WTS for unloading. This will reduce the risk of emissions such as noise, litter, dust and odour.

The Household Recycling Centre has been designed to accept waste and recycling delivered to the site by individual householders. The HRC element of the site will be a split-level facility – a higher area for householders to drive into and a lower yard area, with the large skip containers for household waste, accessed via jetties. There is a purpose built Waste Electrical and Electronic Equipment (WEEE) building at the HRC which enables WEEE to be stored undercover and a proprietary, contained household chemical waste store, waste oil store, which are bunded to prevent pollution. A low-level canopy will cover the pedestrian recycling area, walkways and partially cover the skip containers.

There will be no loose stockpiles of waste at the Site. Waste stored outside in the HRC will be in skips or containers. The only other waste stored on site will be within the WTS building, within containers or bays.

Fire prevention measures at the site are included, in detail, in the Fire Prevention Plan. The main fire prevention measures on site include managing the waste volumes stored on site and the time waste is stored on site. Minimising both volume and storage times reduces not only the risk of self-combustion but also will help reduce other emissions such as odour. There are control measures such as site security to reduce risks such as arson. There is separation and containment of waste stored on site with the use of fire walls within the WTS building and adequate separation distances between skips within the HRC. This will help stop the spread of fire, should it occur. There will be fire detection and suppression systems within the WTS. Should a fire occur on site there is an adequate supply of water held on site to use for fire suppression. Underground storage tanks are included in the drainage system which will hold any fire water so preventing pollution of the environment.

Management Control Measures

Operations will be conducted in accordance with an Environmental Management System. W&S Waste Management Ltd operate a number of waste facilities within Dorset. The operator has achieved full ISO14001 accreditation for all of its sites. W&S Waste Management Ltd's Environmental Management System (EMS) is a set of processes and practices that enable the company to reduce its environmental impacts. The Management System includes an environmental risk assessment, maintenance plan, training plan, procedures for activities on site, contingency plan and accident prevention plan, and complaints procedures.

Good housekeeping practices will be employed on Site to make sure the Site is kept clear of dust, mud, litter and other debris. The Site will be monitored by daily Site inspections and which will initiate cleaning such as litter picking, road and yard sweeping and plant cleaning, when needed.

Monitoring of the Site will ensure that all infrastructure and waste activities are being undertaken in accordance with the Environmental Management System and the environmental permit and that the Site activities do not give rise to pollution.

Training of staff is an important element in pollution prevention and W&S Waste Management Ltd have a commitment to ongoing training of staff.

We will enforce speed limits on Site and reduce vehicle movements and idling on Site so reducing dust and noise at the Site.

We will use appropriate dust suppression systems (such as mist sprays) at appropriate locations and times.

Contingency Plans and Complaints

If things go wrong on site such as power cuts, plant breakdown etc we have contingency plans in place.

We have a comprehensive complaints procedure which aim to assess and solve any issues.

Appendix 1 Waste Types

Blandford Waste Management Centre

EWC

Code	Description
020103	plant tissue waste
020104	waste plastic (except packaging)
020107	waste from forestry
020109	agrochemical waste other than that mentioned in 020108
020110	waste metal
020302	wastes from preserving agents
020303	wastes from solvent extraction
020304	materials unsuitable for consumption or processing
020401	soil from the cleaning and washing of beet
020402	off specification calcium carbonate
020501	materials unsuitable for consumption and processing
020601	materials unsuitable for consumption or processing
020602	wastes from preserving agents
020701	wastes from washing, cleaning and mechanical reduction of raw materials
020702	wastes from spirits distillation
020703	wastes from chemical treatment
020704	materials unsuitable for consumption or processing
030101	waste bark and cork
030105	sawdust, shavings, cuttings, wood, particle board and veneer other than those mentioned in 030104
030301	waste bark and wood
030307	mechanically separated rejects from pulping of waste paper and cardboard
030308	wastes from sorting of paper and cardboard destined for recycling
030310	fibre rejects, fibre and coating sludges from mechanical separation
080112	waste paint and varnish other than those mentioned in 080111
080118	waste paint and varnish other than those mentioned in 080117
080410	waste adhesives and sealants other than those mentioned in 080409
110110	filter cakes other than those mentioned in 110109
110114	degreasing wastes other than those mentioned in 11 01 13

Blandford Waste Management Centre

- 110203 wastes from the production of anodes for aqueous electrolytical processes
- 110206 wastes from copper hydrometallurgical processes other than those mentioned in 11 02 05
- 110501 hard zinc
- 110502 zinc ash
- 130109* mineral based chlorinated hydraulic oils
- 130110* mineral based non chlorinated hydraulic oils
- 130111* synthetic hydraulic oils
- 130112* readily biodegradable hydraulic oils
- 130113* other hydraulic oils
- 130204* mineral based chlorinated engine, gear and lubricating oils
- 130205* mineral based non chlorinated engine, gear and lubricating oils
- 130206* synthetic engine, gear and lubricating oils
- 130207* readily biodegradable engine, gear and lubricating oils
- 130208* other engine, gear and lubricating oils
- 150101 paper and cardboard packaging
- 150102 plastic packaging
- 150103 wooden packaging
- 150104 metallic packaging
- 150105 composite packaging
- 150106 mixed packaging
- 150107 glass packaging
- 150109 textile packaging
- 150203 absorbents, filter materials, wiping cloths and protective clothing other than those mentioned in 150202
- 160103 end of life tyres
- 160113* brake fluids
- 160114* antifreeze fluids containing hazardous substances
- 160115 antifreeze fluids other than those mentioned in 16 01 14
- 160116 tanks for liquefied gas
- 160117 ferrous metal
- 160118 non-ferrous metal

Blandford Waste Management Centre

- 160119 plastic
- 160120 glass
- 160121* hazardous components other than those mentioned in 16 01 07 to 16 01 11 and 16 01 13 and 16 01 14
- 160122 components not otherwise specified
- 160211* discarded equipment containing chlorofluorocarbons, HCFC,HFC
- 160214 discarded equipment other than those mentioned in 160209 to 160213
- 160216 components removed from discarded equipment other than those mentioned in 160215
- 160304 inorganic wastes other than those mentioned in 160303
- 160306 organic wastes other than those mentioned in 160305
- 160504* gases in pressure containers (including halons) containing hazardous substances
- 160505 gases in pressure containers other than those mentioned in 160504
- 160509 discarded chemicals other than those mentioned in 160506, 160507 or 160508
- 160601* lead batteries
- 160604 alkaline batteries (except 160603)
- 160605 other batteries and accumulators
- 160801 spent catalysts containing gold, silver, rhenium, rhodium, palladium, iridium or platinum (except 160807)
- 160803 spent catalysts containing transition metals or transition metal compounds not otherwise specified
- 161102 carbon based linings and refractories from metallurgical processes other than those mentioned in 16 11 01
- 161104 other linings and refractories from metallurgical processes other than those mentioned in 16 11 03
- 161106 linings and refractories from non metallurgical processes other than those mentioned in 16 11 05
- 170101 concrete
- 170102 bricks
- 170103 tiles and ceramics
- 170107 mixtures of concrete, bricks, tiles and ceramics other than those mentioned in 170106
- 170201 wood
- 170202 glass
- 170203 plastic
- 170302 bituminous mixtures other than those mentioned in 170301
- 170401 copper, bronze, brass
- 170402 aluminium

Blandford Waste Management Centre

- 170403 lead
- 170404 zinc ash
- 170405 iron and steel
- 170406 tin
- 170407 mixed metals
- 170411 cables other than those mentioned in 170410
- 170504 soil and stones other than those mentioned in 170503
- 170506 dredging spoil other than those mentioned in 170505
- 170508 track ballast other than those mentioned in 170507
- 170604 insulation materials other than those mentioned in 170601 and 170603
- 170605* construction materials containing asbestos
- 170802 gypsum based construction materials other than those mentioned in 170901
- 170904 mixed construction and demolition wastes other than those mentioned in 170901, 170902 and 170903
- 190102 ferrous materials removed from bottom ash
- 190112 bottom ash and slag other than those mentioned in 190111
- 190118 pyrolysis waste other than those mentioned in 190117
- 190119 sands from fluidised beds
- 190203 premixed wastes composed only of non hazardous wastes
- 190210 combustible wastes other than those mentioned in 190208 and 190209
- 190305 stabilised wastes other than those mentioned in 190304
- 190307 solidified wastes other than those mentioned in 190306
- 190401 vitrified waste
- 190501 non composted fraction of municipal and similar wastes
- 190502 non composted fraction of animal and vegetable wastes
- 190503 off specification compost
- 190801 screenings
- 190802 waste from desanding
- 190901 solid waste from primary filtration and screening
- 190904 spent activated carbon
- 190905 saturated or spent ion exchange resins

Blandford Waste Management Centre

- 191001 iron and steel waste
- 191002 non ferrous waste
- 191201 paper and cardboard
- 191202 ferrous metal
- 191203 non-ferrous metal
- 191204 plastic and rubber
- 191205 glass
- 191207 wood other than those mentioned in 191206
- 191208 textiles
- 191209 minerals (for example sand and stone)
- 191210 combustible waste (refuse derived fuel)
- 191212 other waste including mixtures of materials from mechanical treatment of wastes other than those mentioned in 191211
- 191302 solid wastes from soil remediation other than those mentioned in 191301
- 200101 paper and cardboard
- 200102 glass
- 200108 biodegradable kitchen and canteen waste
- 200110 clothes
- 200111 textiles
- 200113* solvents
- 200114* acids
- 200115* alkalines
- 200117* photochemicals
- 200119* pesticides
- 200121* fluorescent tubes and other mercury containing waste
- 200123* discarded equipment containing chlorofluorocarbons
- 200125 edible oil and fat
- 200126* oil and fact other than those mentioned in 200125
- 200127* paint, inks, adhesives and resins containing dangerous substances
- 200128 paint, inks, adhesives and resins other than those mentioned in 200127
- 200129* detergents containing dangerous substances

Blandford Waste Management Centre

- 200130 detergents other than those mentioned in 200129
- 200133* batteries and accumulators included in 160601, 160602 or 160603 and unsorted batteries and accumulators containing these batteries
- 200134 batteries and accumulators other than those mentioned in 200133
- 200135* discarded electrical and electronic equipment other than those mentioned in 200121 and 200123 containing hazardous components
- 200136 discarded electrical and electronic equipment other than those mentioned in 200121, 200123 and 200135
- 200137* wood containing dangerous substances
- 200138 wood other than those mentioned in 200137
- 200139 plastics
- 200140 metals
- 200141 wastes from chimney sweeping
- 200201 biodegradable waste
- 200202 soil and stones other than those mentioned in 170503
- 200203 other non biodegradable waste
- 200301 mixed municipal waste
- 200302 waste from markets
- 200303 street cleaning residues
- 200307 bulky waste

NOTE EWC codes marked with * are classed as Hazardous waste