



**APPLICATION FOR AN ENVIRONMENTAL  
PERMIT VARIATION UNDER THE  
ENVIRONMENTAL PERMITTING (ENGLAND  
AND WALES) REGULATIONS 2016 (AS  
AMENDED)**

**LETTER OF REQUEST FOR MORE  
INFORMATION RESPONSE**

**Application Ref: EPR/PP3231YU/V005**

**II-VI**

**II-VI Compound Semiconductors Limited  
Millennium Way  
Newton Aycliffe  
Co. Durham**

**ECL Ref: ECL.079.01.01/More Information**

**Version: 2**

**October 2020**

## TABLE OF CONTENTS

1.	EA Question 1	1
2.	EA Question 2	1
3.	EA Question 3	1
4.	EA Question 4	2
5.	EA Question 5	2

## List of Appendices

Appendix I	H1
Appendix II	Copies of discharge consents
Appendix III	F1 Form

## 1. EA Question 1

- 1.1. **Application form C2 Section 5a – Provide a process flow diagram showing constituent gases / liquid / solid inputs for each manufacturing process and constituent waste gases and effluent flows from each manufacturing process to each emission / discharge / collection point, including in line abatement identification.**

### Response

- 1.1.1. Following EA approval of a Commercial In Confidence request put forward by II-VI, a Process Flow Diagram has been provided to the EA separately from this response document.

## 2. EA Question 2

- 2.1. **Application form Part C3 section 2 Emissions to air water and land, EPTR section 7. Provide a H1 screening risk assessment using the H1 software tool as detailed in guidance: ‘Air emissions risk assessment for your environmental permit’ and Surface water pollution risk assessment for your environmental permit’, found at Gov.UK.**

### Response

- 2.1.1. A H1 Screening Assessment has been undertaken for Air and Surface Water, the outputs have been included in Appendix I to this response.

## 3. EA Question 3

- 3.1. **Application form C3 Section 2 point source emissions to sewer, EPTR section 5.5.1 – Provide copies of discharge consents to sewer issued to the applicant and demonstrates Indium’s inclusion in the discharge suite. (The two discharge consents to sewer identified in the application date from 1997 and are issued to Fujitsu and do not identify Indium.**

### Response

- 3.1.1. Copies of the Discharge Consents issued to II-VI by Northumbrian Water are contained in Appendix II to this response.
- 3.1.2. II-VI have previously been in contact with Northumbrian Water regarding the inclusion of Indium in their Discharge Consent; at that time, Northumbrian Water elected not to include Indium as a parameter in the Discharge Consent as there are no background levels that have been published that can be quoted.

#### 4. EA Question 4

- 4.1. **Application form F1 Section 5 Declaration – Provide an F1 form where the applicant has ticked the box confirming that they understand and agree with the declaration.**

**Response**

- 4.1.1. The F1 Form has been updated to confirm that II-VI as the applicant has ticked the box to confirm they understand and agree with the declaration.

#### 5. EA Question 5

- 5.1. **Application Site Condition Report (ASCR), Figure 2, indicates that some of the site is at risk of flooding - Provide confirmation that the Environment Management System incorporates flood risk plans.**

**Response**

- 5.1.1. It can be confirmed II-VI's Environment Management System will include flood risk plans.

# APPENDIX I – H1

## II-VI - A1-A3 (Boilers) - H1 Assessment of Emissions to Air



### Calculation of Effective Stack Height

Actual Stack	
H (m):	15.00
Uact (m):	30
Ueff (m):	<u>24.90</u>

<u>Acronyms / Abbreviations</u>
AAD = Ambient Air Directive
AQS = Air Quality Standard
ELV = Emission Limit Value
LT = Long-term
PC = Process Contribution
PEC = Predicted Environmental Concentration
ST = Short-term

### Stage one screening:

Pollutant	Stack Height	ELV (mg/m <sup>3</sup> )	Volumetric Flow Rate at Stack (m <sup>3</sup> /s) <sup>(c)</sup>	Discharge Rate (g/s)	Effective Stack Height (m)	Dispersion Factor (µg/m <sup>3</sup> /g/s)		PC (µg/m <sup>3</sup> ) <sup>(d)</sup>		AAD AQS (µg/m <sup>3</sup> )		PC as % of AQS		PC Significant? (>1%) (>10%)	
						LT	ST	LT	ST	LT	ST	LT	ST	LT	ST
						NO <sub>x</sub> as NO <sub>2</sub>	30	70 <sup>(a)</sup>	1.569	0.110	24.90	3.18	119.84	1.05	19.74
CO	30	1000 <sup>(b)</sup>	1.569	1.569	24.90	3.18	119.84	14.96	563.96	N/A	10000	N/A	5.64%	N/A	No

### Stage two screening for NO<sub>2</sub> PCs:

Background (µg/m <sup>3</sup> )	PEC (µg/m <sup>3</sup> )	PEC as a % of LT AQS	PEC Significant? (>70%) <sup>(g)</sup> Long-term
8.54 <sup>(e)</sup>	9.59 <sup>(f)</sup>	23.97%	No

### Notes to H1 Calculation:

- (a) Maximum expected ELV.
- (b) Maximum expected ELV.
- (c) As calculated from a boiler service report undertaken by Dunphy Combustion Limited.
- (d) The Environment Agency *Air emissions risk assessment for your environmental permit* guidance states when a substance is released from more than one point, you must add up the substance's PC from each source to get the total PC for the substance. There are currently three emission points for which combustion gases are being released from (Boilers A1 - A3) - all situated adjacent to the same building. As a result, both the long-term and short-term PCs are the sum of these three emission points.
- (e) Background data taken from the Department for Environment Food & Rural Affairs (DEFRA) latest modelled NO<sub>2</sub> background maps (2019 data) for the closest point to site (NGR: NZ 27500 21500 (UK grid code: 537258)).
- (f) The sum of the long-term PC and the background concentration.
- (g) In accordance with the EA guidance (*Air emissions risk assessment for your environmental permit*), further assessments are not required if the long-term PEC is less than 70% of the long-term environmental standard.

## II-VI - A4 (MOCVD) - H1 Assessment of Emissions to Air



### Calculation of Effective Stack Height

	<u>Actual Stack</u>
H (m):	20.00
Uact (m):	23
Ueff (m):	<u>4.98</u>

<b>Acronyms / Abbreviations</b>
EAL = Environmental Assessment Level
ELV = Emission Limit Value
LT = Long-term
PC = Process Contribution
PEC = Predicted Environmental Concentration
ST = Short-term

### Stage one screening:

Pollutant	Stack Height	<u>Volumetric</u>			<u>Effective Stack Height</u> (m)	<u>Dispersion Factor</u> ( $\mu\text{g}/\text{m}^3/\text{g}/\text{s}$ )		<u>PC</u> ( $\mu\text{g}/\text{m}^3$ )			<u>EAL</u> ( $\mu\text{g}/\text{m}^3$ )		<u>PC</u> as % of EAL		<u>PC Significant?</u>			
		<u>ELV</u> ( $\text{mg}/\text{m}^3$ ) <sup>(a)</sup>	<u>Flow Rate at Stack</u> ( $\text{m}^3/\text{s}$ ) <sup>(b)</sup>	<u>Discharge Rate</u> (g/s)		<u>Long-term</u>	<u>Short-term</u>	<u>Long-term</u>	<u>Short-term</u>	<u>LT</u>	<u>Long-term</u>	<u>Short-term</u>	<u>Long-term</u>	<u>Short-term</u>	<u>Long-term</u>	<u>Short-term</u>	<u>&gt;1%</u>	<u>&gt;10%</u>
Arsine	23	0.500	7.723	0.004	4.98	90.23	790.34	0.35	3.05		1.6	48	21.78%	6.36%	Yes	No		
Phosphine	23	0.500	7.723	0.004	4.98	90.23	790.34	0.35	3.05		N/A	42	N/A	7.27%	N/A	No		

### Stage two screening for Arsine PCs:

<u>Background</u> ( $\mu\text{g}/\text{m}^3$ )	<u>PEC</u> ( $\mu\text{g}/\text{m}^3$ )	<u>PEC as a % of LT</u>	<u>PEC Significant?</u> ( $>70\%$ ) <sup>(e)</sup>
<u>LT</u> <sup>(c)</sup>	<u>LT</u> <sup>(d)</sup>	<u>AQS</u>	<u>Long-term</u>
0.000170	0.35	21.79%	No

### Notes to H1 Calculation:

- (a) In the absence of any test data - a maximum expected emission concentration has been suggested (this value has taken the benchmark emission limit value (ELV) from Annex 1 - Emissions Benchmarks, of EPR 4.03, (The Inorganic Chemicals Sector) into consideration).
- (b) As calculated from the actual volumetric flow rate provided by II-VI for the exhaust fan.
- (c) In the absence of readily available background air quality data for Arsine, the background concentration for Arsenic has been taken from DEFRA's monitoring networks: Heavy Metals. Data taken from the average calculated from the 2019 results acquired from Eskdalemuir. Data available online via: [https://uk-air.defra.gov.uk/data/non-auto-data?uka\\_id=UKA00130&view=data&network=metals&year=2019&pollutant=1032#view](https://uk-air.defra.gov.uk/data/non-auto-data?uka_id=UKA00130&view=data&network=metals&year=2019&pollutant=1032#view).
- (d) The sum of the long-term PC and the background concentration.
- (e) In accordance with the EA guidance (Air emissions risk assessment for your environmental permit), further assessments are not required if the long-term PEC is less than 70% of the long-term environmental standard.

**II-VI - A5, A10, A13 & A15 - H1 Assessment of Emissions to Air**



Calculation of Effective Stack Height

Actual Stack  
 H (m): 20.00  
 Uact (m): 23  
 Ueff (m): 4.98

<b>Acronyms / Abbreviations</b>	
EAL = Environmental Assessment Level	
ELV = Emission Limit Value	
LT = Long-term	
PC = Process Contribution	
PEC = Predicted Environmental Concentration	
ST = Short-term	

		<b>Stage one screening:</b>																			
Stack	Pollutant	Stack Height	ELV (mg/m <sup>3</sup> ) <sup>(a)</sup>	Volumetric Flow Rate at Stack (m <sup>3</sup> /s) <sup>(b)</sup>	Discharge Rate (g/s)	Effective Stack Height (m)	Dispersion Factor (µg/m <sup>3</sup> /g/s)				(PC) (µg/m <sup>3</sup> )		Total PC <sup>(c)</sup> (µg/m <sup>3</sup> )		(EAL) (µg/m <sup>3</sup> )		PC as % of EAL		PC Significant? (>1%) (>10%)		
							LT	ST	LT	ST	LT	ST	LT	ST	LT	ST	LT	ST	LT	ST	LT
A5	Ammonia	23	10.00	11.60	0.116	4.98	90.23	790.34	10.47	91.68											
A10		23	10.00	10.00	0.100	4.98	90.23	790.34	9.02	79.03	34.33	300.72	180	2500	19.07%	12.03%	Yes	Yes			
A13		23	10.00	10.00	0.100	4.98	90.23	790.34	9.02	79.03											
A15		23	10.00	6.45	0.065	4.98	90.23	790.34	5.82	50.98											

<b>Stage two screening:</b>							
Background (µg/m <sup>3</sup> ) LT <sup>(d)</sup>	PEC (µg/m <sup>3</sup> ) LT <sup>(e)</sup>	PEC as a % of LT EAL	PEC Significant? (>70%) <sup>(f)</sup> Long-term	ST EAL minus 2x LT Background	ST PC as % of ST EAL minus 2x LT background	Stage two screening Significant? <sup>(g)</sup>	ST PC
8.73	43.1	23.93%	No	2482.53	12.11%	No	

**Notes to H1 Calculation:**

- <sup>(a)</sup> In the absence of any test data - a maximum expected emission concentration has been suggested (this value has taken the benchmark emission limit value (ELV) from Annex 1 - Emissions Benchmarks, of EPR 4.03, (The Inorganic Chemicals Sector) into consideration).
- <sup>(b)</sup> As calculated from the actual volumetric flow rate provided by II-VI for the exhaust fan.
- <sup>(c)</sup> The Environment Agency *Air emissions risk assessment for your environmental permit* guidance states when a substance is released from more than one point, you must add up the substance's PC from each source to get the total PC for the substance. There are currently four emission points for which ammonia is being released from (A5, A10, A13 & A15) - all situated adjacent to the same building. As a result, both the long-term and short-term PCs are the sum of these four emission points.
- <sup>(d)</sup> Background data taken from the Department for Environment Food & Rural Affairs (DEFRA) United Kingdom Eutrophying & Acidifying Network (UKEAP): National Ammonia Monitoring Network. Data taken from the average calculated from the 2019 results acquired from the Brompton monitoring site. Available online via: [https://uk-air.defra.gov.uk/data/non-auto-data?uka\\_id=UKA00405&view=data&network=namn&year=2019&pollutant=default#view](https://uk-air.defra.gov.uk/data/non-auto-data?uka_id=UKA00405&view=data&network=namn&year=2019&pollutant=default#view)
- <sup>(e)</sup> The sum of the long-term PC and the background concentration.
- <sup>(f)</sup> In accordance with the EA guidance (Air emissions risk assessment for your environmental permit), further assessments are not required if the long-term PEC is less than 70% of the long-term environmental standard.
- <sup>(g)</sup> In accordance with the EA guidance (Air emissions risk assessment for your environmental permit), further assessments are not required if the short-term PC is less than 20% of the short-term environmental standard minus twice the long-term background.



## II-VI - A6, A12 & A14 - H1 Assessment of Emissions to Air



### Calculation of Effective Stack Height

#### Actual Stack

H (m): 20.00  
 Uact (m): 23  
 Ueff (m): 4.98

Acronyms / Abbreviations
EAL = Environmental Assessment Level
ELV = Emission Limit Value
LT = Long-term
PC = Process Contribution
ST = Short-term

<b>Stage one screening:</b>																		
Stack	Pollutant	Stack Height	ELV (mg/m <sup>3</sup> ) <sup>(a)</sup>	Volumetric Flow Rate at Stack (m <sup>3</sup> /s) <sup>(b)</sup>	Discharge Rate (g/s)	Effective Stack Height (m)	Dispersion Factor (µg/m <sup>3</sup> /g/s)		PC (µg/m <sup>3</sup> )		Total PC <sup>(c)</sup> (µg/m <sup>3</sup> )		(EAL) (µg/m <sup>3</sup> )		PC as % of EAL		PC Significant? (>1%) (>10%)	
							LT	ST	LT	ST	LT	ST	LT	ST	LT	ST	LT	ST
							A6	Chlorine	23	5.00	12.34	0.0617	4.98	90.23	790.34	5.57	48.76	
A12	23	5.00	10.00	0.0500	4.98	90.23	790.34		4.51	39.52	16.21	142.02	N/A	290	N/A	48.97%	N/A	Yes
A14	23	5.00	13.60	0.0680	4.98	90.23	790.34		6.14	53.74			N/A	290	N/A	48.97%	N/A	Yes

<b>Stage two screening:</b>				
Background	ST EAL	ST PC as % of EAL	Stage two screening	ST PC Significant? <sup>(e)</sup>
1.020	287.96	0.17%	No	No

### Notes to H1 Calculation:

- <sup>(a)</sup> In the absence of any test data - a maximum expected emission concentration has been suggested (this value has taken the benchmark emission limit value (ELV) from Annex 1 - Emissions Benchmarks, of EPR 4.03, (The Inorganic Chemicals Sector) into consideration).
- <sup>(b)</sup> As calculated from the actual volumetric flow rate provided by II-VI for the exhaust fan.
- <sup>(c)</sup> The Environment Agency *Air emissions risk assessment for your environmental permit* guidance states when a substance is released from more than one point, you must add up the substance's PC from each source to get the total PC for the substance. There are currently three emission points for which chlorine is being released from (A6, A12 & A14) - all situated on the same building. As a result, both the long-term and short-term PCs are the sum of these three emission points.
- <sup>(d)</sup> Background data taken from the Department for Environment Food & Rural Affairs (DEFRA) United Kingdom Eutrophying & Acidifying Network (UKEAP): Acid Gas and Aerosol Network. In the absence of readily available background air quality data for Chlorine, background data for particulate chloride has been utilised. The data acquired has come from the nearest monitoring station to II-VI's Newton Aycliffe site, with the highest concentration (i.e. between monitoring stations Moorhouse and High Muffles - High Muffles had the highest overall concentration for the year 2019). Consequently, the background concentration has been calculated as the average for the 2019 data of particulate chloride calculated from High Muffles. Data available online via: [https://uk-air.defra.gov.uk/data/non-auto-data?uka\\_id=UKA00169&view=data&network=aganet&year=2019&pollutant=1391#view](https://uk-air.defra.gov.uk/data/non-auto-data?uka_id=UKA00169&view=data&network=aganet&year=2019&pollutant=1391#view).
- <sup>(e)</sup> In accordance with the EA guidance (Air emissions risk assessment for your environmental permit), further assessments are not required if the short-term PC is less than 20% of the short-term environmental standard minus twice the long-term background.

## II-VI - A7 & A17 - H1 Assessment of Emissions to Air



### Calculation of Effective Stack Height

#### Actual Stack

H (m): 20.00  
 Uact (m): 23  
 Ueff (m): 4.98

<b>Acronyms / Abbreviations</b>
EAL = Environmental Assessment Level
ELV = Emission Limit Value
LT = Long-term
PC = Process Contribution
ST = Short-term

		<b>Stage one screening:</b>																	
Stack No	Pollutant	Stack Height	ELV (mg/m <sup>3</sup> ) <sup>(a)</sup>	Volumetric Flow Rate at Stack (m <sup>3</sup> /s) <sup>(b)</sup>	Discharge Rate (g/s)	Effective Stack Height (m)	Dispersion Factor (µg/m <sup>3</sup> /g/s)		PC (µg/m <sup>3</sup> )		Total PC (µg/m <sup>3</sup> ) <sup>(c)</sup>		EAL (µg/m <sup>3</sup> ) <sup>(d)</sup>		PC as % of EAL		PC Significant? (>1%) (>10%)		
							LT	ST	LT	ST	LT	ST	LT	ST	LT	ST	LT	ST	LT
A7	TVOC	23	20.00	1.00	0.020	4.98	90.23	790.34	1.80	15.81	3.61	31.61	N/A	195	N/A	16.21%	N/A		
A17		23	20.00	1.00	0.020	4.98	90.23	790.34	1.80	15.81									Yes

<b>Stage two screening:</b>			
Background (µg/m <sup>3</sup> )	ST EAL minus 2x LT	ST PC as % of ST EAL minus 2x LT background <sup>(f)</sup>	Stage two screening ST PC Significant? <sup>(f)</sup>
0.213	194.57	16.25%	No

### **Notes to H1 Calculation:**

- (a) In the absence of any test data - a maximum expected emission concentration has been suggested (this value has taken the benchmark emission limit value (ELV) from Annex 1 - Emissions Benchmarks, of EPR 4.03, (The Inorganic Chemicals Sector) into consideration).
- (b) As calculated from the actual volumetric flow rate provided by II-VI for the exhaust fan.
- (c) The Environment Agency *Air emissions risk assessment for your environmental permit* guidance states when a substance is released from more than one point, you must add up the substance's PC from each source to get the total PC for the substance. There are currently two emission points for which total volatile organic compounds (TVOCs) are being released from (A7 & A17) - all situated adjacent to the same building. As a result, both the long-term and short-term PCs are the sum of these two emission points.
- (d) The Environment Agency *Air emissions risk assessment for your environmental permit* guidance states if you release VOCs into the air and do not know what all the substances in them are, treat them all as 100% benzene.
- (e) Background data taken from the Department for Environment Food & Rural Affairs (DEFRA) latest modelled Benzene background maps (2019 data) for the closest point to site (NGR: NZ 27500 21500 (UK grid code: 537258)).
- (f) In accordance with the EA guidance (*Air emissions risk assessment for your environmental permit*), further assessments are not required if the short-term PC is less than 20% of the short-term environmental standard minus twice the long-term background.

## II-VI - H1 Assessment of Emissions to Surface Water - W1/W2



Acronyms / Abbreviations
AA = Annual Average
EFR = Effluent Flow Rate
EQS = Environmental Quality Standard
LT = Long-term
MAC = Maximum Allowable Concentration
PC = Process Contribution
RC = Release Concentration
RFR = River Flow Rate
ST = Short-term

### Stage one screening:

Substance	Substance Details	EQS	EQS	RC as a %		ST	LT
		MAC <sup>(a)</sup> (ST) (µg/l)	AA <sup>(a)</sup> (LT) (µg/l)	RC <sup>(b)</sup> (µg/l)	of EQS (MAC) (ST)	of EQS (AA) (LT)	RC Significant? <sup>(c)</sup> (MAC >10%)
Ammonia	as Nitrogen	No limit given		336.79	n/a	n/a	n/a
Arsenic	n/a	n/a	50	0.230	n/a	0.46%	No
Fluoride	When < 50mg/l calcium carbonate present <sup>(d)</sup>	3000	1000	437.81	14.59%	43.78%	Yes
Fluoride	When > 50mg/l of calcium carbonate present <sup>(d)</sup>	15000	5000	437.81	2.92%	8.76%	No
Total Mercury	n/a	0.07	n/a	0.00940	13.43%	n/a	Yes

### Stage two screening:

Substance	EFR <sup>(e)</sup> (m <sup>3</sup> /s)	RC (µg/l)	RFR <sup>(f)</sup> (m <sup>3</sup> /s)	EFR (m <sup>3</sup> /s) x RC (µg/l)	EFR (m <sup>3</sup> /s) + RFR (m <sup>3</sup> /s)	PC <sub>water</sub> <sup>(g)</sup> (µg/l)	PC <sub>water</sub> as % of EQS MAC (ST)	PC <sub>water</sub> Significant? <sup>(h)</sup>	PC <sub>water</sub> as % of EQS AA (LT)	PC <sub>water</sub> Significant? <sup>(h)</sup>
Fluoride*	0.00150	437.81	0.115	0.658	0.117	5.649	0.19%	No	0.56%	No
Total Mercury		0.00940		0.0000141		0.000121	0.17%	No	n/a	n/a

### Notes to H1 to Water Calculation:

Guidance used: *Surface water pollution risk assessment for your environmental permit*, available online via:

<https://www.gov.uk/guidance/surface-water-pollution-risk-assessment-for-your-environmental-permit#estimated-data>.

- (a) EQS MAC / AA (where applicable) obtained from either the Environment Agency's: 'Fresh waters specific pollutants and operational environmental quality standards (EQS)' or from the Environment Agency's: 'Freshwaters priority hazardous substances, priority substances and other pollutants' spreadsheet.
- (b) The RC values for Ammonia, Arsenic and Fluoride were calculated from the annual average of the daily values obtained from 2019 monitoring data provided by II-VI. These RC values are based on the laboratory results of spot samples taken at II-VI whilst the de-ionisation plant is not regenerating. The RC value for Mercury has been obtained from the 2019 mass balance calculation of the quantity of 47% NaOH (Sodium Hydroxide) used on-site.
- (c) In accordance with the guidance (as outlined above) concentrations of the tested discharge water that are less than 10% of the EQS do not require further assessments as they are not considered to pose a risk to the environment.
- (d) Both limits, relating to the calcium carbonate content of the released fluoride, have been addressed in the interest of being conservative.
- (e) EFR calculated from the annual average of the daily flow values (m<sup>3</sup>/day) obtained from the 2019 monitoring data provided by II-VI.
- (f) RFR obtained for the River Skern from the National River Flow Archive, period of record: 1972-2019. The flow rate value utilised was equalled or exceeded for 95% of the flow record. Available via: <https://nrfa.ceh.ac.uk/data/station/meanflow/25020>.
- (g)  $PC_{water} = (EFR \times RC) / (EFR + RFR)$ .
- (h) In accordance with the guidance (as outlined above) stage two screening involves calculating the PC (which is the RC after it has been diluted by the receiving water). If the PC is 4% or less than the EQS, no further assessments are required. When < 50mg/l calcium carbonate present.

## **APPENDIX II – DISCHARGE CONSENTS**

**Our Ref:** JG/PD/T1865  
**Date:** 19<sup>th</sup> March 2018

The Company Secretary  
II-VI COMPOUND SEMICONDUCTORS LIMITED  
UNIT 20b  
OAKHAM ENTERPRISE PARK  
ASHWELL ROAD  
OAKHAM  
RUTLAND  
LE15 7TU

Dear Sirs

**CONSENT TO THE DISCHARGE OF TRADE EFFLUENT:**  
**REGISTER NUMBER T1865 (THE "CONSENT")**

I enclose the Consent to Discharge Trade Effluent from the premises situated at MILLENNIUM WAY, AYCLIFFE BUSINESS PARK, NEWTON AYCLIFFE, COUNTY DURHAM, DL5 6 JW.

If you have any queries regarding the Consent, please contact Peter Davies.

I take this opportunity to remind you that under powers granted by virtue of s124 Water Industry Act 1991 Northumbrian Water Limited may give a direction varying conditions which have been attached to the above Consent. These powers are available two years after the date of the enclosed document: or at an earlier time if both Trader and Northumbrian Water Limited agree in writing.

Your attention is drawn to the right of appeal which is noted below the signature on the Consent. An appeal against this Consent must normally be made to The Water Services Regulation Authority within two months of your receipt of this Notice. For your information his address is:-

The Water Services Regulation Authority  
Office of Water Services  
Centre City Tower  
7 Hill Street  
Birmingham  
B5 4UA

Please acknowledge receipt of the enclosed legal document.

Yours faithfully



*JG* **JEFF GRAHAM**  
**SCIENTIFIC SUPPORT WASTE WATER MANAGER**

CONSENT NUMBER: T1865

**WATER INDUSTRY ACT 1991**

**WATER ACT 2003**

**ENVIRONMENTAL PROTECTION ACT 1990**

**ENVIRONMENT ACT 1995**

**THE POLLUTION PREVENTION AND CONTROL ACT 1999**

**CONSENT TO THE DISCHARGE OF TRADE EFFLUENT**

**WHEREAS** II-VI COMPOUND SEMICONDUCTORS LIMITED (the "Trader") whose registered office is at: UNIT 20b, OAKHAM ENTERPRISE PARK, ASHWELL ROAD, OAKHAM, RUTLAND, LE15 7TU and whose registered company number is: 10505662 being the occupier of the trade premises at: MILLENNIUM WAY, AYCLIFFE BUSINESS PARK, NEWTON AYCLIFFE, COUNTY DURHAM, DL5 6 JW (the "Trade Premises") and by an application dated: 23<sup>rd</sup> January 2018 (the "Application") has applied to **NORTHUMBRIAN WATER LIMITED** (the "Company") for consent to discharge trade effluent from the Trade Premises into the Company's sewers.

**AND WHEREAS** the Environment Agency ("EA") or such other body carrying out its functions in respect of The Environmental Permitting (England and Wales) Regulations 2010 (SI 2010 No. 675) may issue a permit ("Permit") with regard to a regulated facility thereby setting out particular conditions with regard to part, or all, of the trade effluent discharged from the Trade Premises.

**NOW THEREFORE** in the exercise of the powers conferred upon it by the Water Industry Act 1991 (the "Act") and any Act amending or replacing the WIA the Company **HEREBY CONSENTS** to the discharge of the trade effluent by the Trader into its sewers **SUBJECT TO THE FOLLOWING CONDITIONS.**

1. **PERMIT**

This Consent is always subject to the provisions of any Permit in force from time to time in respect of prescribed processes carried out at the Trade Premises. In the event of any conflict between the provisions of this Consent and the provisions of the said Permit the more stringent requirement shall prevail.

2. **NATURE AND COMPOSITION**

The trade effluent discharged under this Consent shall be waste water containing those constituents specified in Section 4 of the G/02 Application insofar as the discharge of those constituents does not breach Clauses 7 to 11 of this Consent.

**3. POINT OF DISCHARGE**

The sewer into which the trade effluent may be discharged is the Company's public foul sewer Pipe Line Reference (PLR) NZ27217904 at the point shown more particularly in the plan attached hereto. No change shall be made in the location of the discharge point without the prior written consent of the Company.

**4. CHANGE IN CIRCUMSTANCE**

The Trader shall give to the Company two months' notice in writing of any changes or proposed changes in manufacturing process, raw materials, pre-treatment of the trade effluent or any other circumstances likely to alter the nature or composition of the trade effluent and of any circumstances resulting or likely to result in a cessation of the discharge. Any such changes will be a change of circumstances for the purposes of Section 125 (2) of the Act.

One of the circumstances that constitute a significant change in the nature of the trade effluent will be a change in the ratio of the Total Chemical Oxygen Demand to the Total 5 day Biochemical Oxygen Demand (ATU modification) of the trade effluent. In such a circumstance the Company will be entitled to issue a variation of the conditions of this Consent in accordance with Sections 124 and 125 of the Act.

**5. CHANGE OF NAME *etc***

5.1 The Trader shall notify the Company in writing within twenty one (21) days of any change to the name or address of the owner or occupier of the Trade Premises.

5.2 Where there is a change of occupier, this Consent is automatically terminated: the new occupier must serve an application upon the Company for consent to discharge.

**6. CONNECTIONS**

No connections shall be made to the Company's sewer system without the prior written approval of the Company and all such connections shall be constructed and maintained to the satisfaction of the Company at the expense of the Trader.

**7. MAXIMUM QUANTITY OF DISCHARGE**

The maximum amount of the trade effluent discharged during any one period of 24 hours shall not exceed fifty (50) cubic metres, except where no trade effluent is discharged by the Trader from the Trade Premises for a period of six months when Clause 16 of this Consent applies.

**8. MAXIMUM RATE OF DISCHARGE**

The maximum rate at which the trade effluent may be discharged shall not exceed one (1) litre per second.

**9. TEMPERATURE**

No trade effluent shall be discharged which has a temperature higher than 30 degrees Celsius.

**10. pH VALUE**

No trade effluent shall be discharged having a pH value of less than 6 or greater than 10.

**11. MATTERS TO BE ELIMINATED PRIOR TO DISCHARGE TO SEWER**

The following are strictly prohibited from entry to the Company's sewers and shall be eliminated from the trade effluent before it is discharged to the sewers of the Company:

- 11.1 Any special category effluent listed in Schedule 1 to The Trade Effluents (Prescribed Processes and Substances) Regulations 1989 (S.I.1156) or any other statutory instrument amending them (the "Regulations") insofar as they are in a concentration greater than the background concentration as defined in the Regulations (see Appendix): unless the discharge of prescribed substances is permitted by an EA Notice of Determination.
- 11.2 Any substance which is not special category effluent but which is within List I designated from time to time under provisions of EC Directive 76/464/EEC and in particular Articles 6 and 12 thereof, or in the Table set down within section 7 of Schedule 1 of the Regulations, in so far as they are in a concentration greater than in water supplied to the Trade Premises for domestic uses (see Appendix): unless they are specifically authorised by a Permit or under section 11.6 below.
- 11.3 Any petroleum spirit or other solvent in mixture or in solution, at levels likely to cause a nuisance or produce flammable, harmful, or toxic vapours in the sewer system; or be dangerous to or cause injury to any person working in the sewer or at the sewage treatment works unless they are specifically authorised under section 11.6 below.
- 11.4 Any other constituent of the trade effluent specified in Section 4 of the Application as that which is likely to injure or obstruct sewers, or to make the treatment or disposal of the sewage from those sewers specially difficult or expensive, unless they are specifically authorised under section 11.6 below.



- 11.5 Any living genetically modified organisms.
- 11.6 Any constituents excepting the following not exceeding the concentrations stated:-

Constituents	Limit (milligrams per litre)	When expressed as
Suspended solids dried at 105°C	200	-
Total Chemical Oxygen Demand (Dichromate Value)	500	O <sub>2</sub>
Free chlorine	1.5	Cl <sub>2</sub>
Total Phosphorus (not exceeding site load total of six (6) kg/day)	22	P

The analytical method used to determine the concentration of the constituent in any sample shall be that method used from time to time by Northumbrian Water Group's analyst or agent. The method will be a Standing Committee of Analysts or equivalent method, where "equivalent" relates to the same accuracy and precision.

## 12. ENTRY AND SAMPLES

- 12.1 An inspection chamber or manhole shall be provided and maintained by the Trader in the position indicated on the plan attached hereto and shall be so constructed and maintained as to enable a person authorised by the Company readily to obtain samples at any reasonable time of the trade effluent so discharged.
- 12.2 The Trader shall permit duly authorised representatives of the Company to inspect examine and test at all reasonable times any works and apparatus installed in connection with the trade effluent and to take samples of the trade effluent.
- 12.3 The Trader shall ensure that no matter other than trade effluent shall pass through the inspection chamber or manhole.

## 13. MEASUREMENT AND DETERMINATION OF DISCHARGE

- 13.1 If demanded by the Company a meter or some other apparatus suitable and adequate for measuring and automatically recording the volume, rate of discharge, nature and composition of the trade effluent shall be provided and maintained and tested by the Trader to the satisfaction of the Company.

- 13.2 If demanded by the Company records shall be kept by the Trader of the volume, rate of discharge, nature and composition of the trade effluent discharged into the sewer. Such records shall be kept available for inspection at all reasonable times by any authorised officer of the Company and copies shall be sent to the Company on demand.
- 13.3 If the measuring and/or recording apparatus ceases to function correctly then the Company must inform the Retailer immediately.  
The Trader will then as soon as reasonably practicable repair or replace any measuring and/or recording apparatus ensuring that the repaired or replaced apparatus is suitable and adequate for measuring and automatically recording the volume, rate of discharge, nature and composition of the trade effluent.
- 13.4 The Company and the Trader may from time to time agree alternative methods of complying with the foregoing provisions.

#### 14. **BREACH OF CONDITIONS OF CONSENT**

The Trader shall notify the Company immediately by the quickest practicable means (usually by telephone) of any discharge from the Trade Premises which contravenes any of the provisions of this Consent. The initial notification shall be followed up by a written report which shall be submitted by the Trader to the Company within 7 working days setting out the nature of the breach, the circumstances that resulted in the breach and the action taken by the Trader.

#### 15. **EXPIRY**

- 15.1 Unless otherwise agreed in writing by the Company where no trade effluent is discharged by the Trader from the Trade Premises for a period of six months the maximum amount of the trade effluent discharged during any one period of 24 hours shall be zero, *ie* this Consent will automatically expire.
- 15.2 If the Trader later wishes to resume the discharge after such six month period of non-discharge, a new application for a Consent must be served on the Company.
- 15.3 This Consent may be terminated at any time by agreement between the parties subject to a minimum of four weeks' notice on either side.
- 15.4 This Consent will expire automatically on the grounds set out at section 5.2 above.

16. **REFERENCE PURSUANT WATER INDUSTRY ACT 1991 PART IV CHAPTER III**

16.1 Where any notice of determination or other document is issued by the EA pursuant to section 132 Water Industry Act 1991 (the "Notice") in respect of any part of the trade effluent discharge from the Trade Premises the terms and conditions of the Notice will be given effect by this Consent.

17. **INTERPRETATION**

Words and expressions to which meanings are assigned by the Environment Act 1995, the Environmental Protection Act 1990, the Water Industry Act 1991, Water Resources Act 1991, Water Consolidation (Consequential Provisions) Act 1991 (or any legislation amending or affecting the same) shall have the same meaning assigned to them when used in this Consent.

*Dated this Monday, 19<sup>th</sup> March 2018*

**SIGNED:**

  
.....  
**JEFF GRAHAM**  
*PP* **SCIENTIFIC SUPPORT WASTE WATER MANAGER**

*For and on behalf of Northumbrian Water Limited*

**NOTE:**

Your attention is drawn to Section 122 Water Industry Act 1991 which provides that any person aggrieved by any condition attached to this consent may appeal to The Water Services Regulation Authority.

**ADDRESS TO WHICH ALL COMMUNICATIONS SHOULD BE SENT:**

Peter Davies  
Northumbrian Water Limited  
Leat House  
Pattinson Road  
Washington  
Tyne and Wear  
NE38 8LB

**Telephone:** 0345 717 1100  
**Email:** [trade.effluent@nwl.co.uk](mailto:trade.effluent@nwl.co.uk)

Attachments 1 Appendix  
2 Drainage Plan

## APPENDIX

### THE TRADE EFFLUENTS (PRESCRIBED PROCESSES AND SUBSTANCES) REGULATIONS 1989

(as at 31 August 1990)

Section 120 Water Industry Act 1991 and the above Regulations oblige Northumbrian Water Limited (unless it intends to refuse the application) to refer to the Environment Agency any application to discharge special category trade effluent which;

- a) contains any of the substances listed in Schedule 1 below in a concentration greater than the background concentration or,
- b) is derived from a process in Schedule 2 below if either chloroform or asbestos is present in a concentration greater than the background concentration.

In these circumstances consent for the discharge cannot be granted except to the extent that the Secretary of State consents and subject to any conditions he may specify.

#### PRESCRIBED SUBSTANCES - SCHEDULE 1

Mercury and its compounds	Dichlorvos
Cadmium and its compounds	1,2-Dichloroethane
gamma-Hexachlorocyclohexane	Trichlorobenzene
DDT Atrazine	
Pentachlorophenol and its compounds	Simazine
Hexachlorobenzene	Tributyltin compounds
Hexachlorobutadiene	Triphenyltin compounds
Aldrin Trifluralin	
Dieldrin	Fenitrothion
Endrin Azinphos-methyl	
Carbon Tetrachloride	Malathion
Polychlorinated Biphenyls	Endosulfan

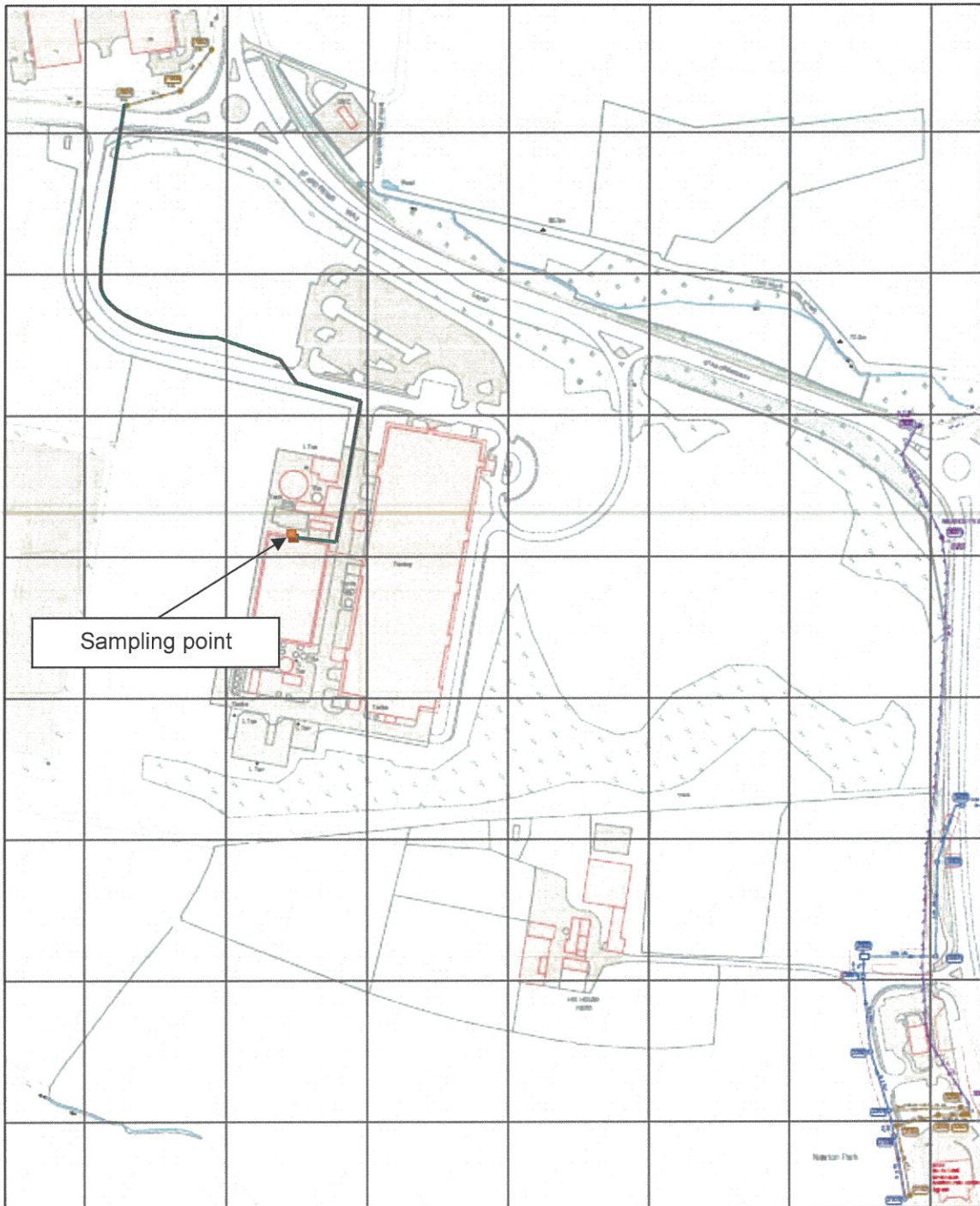
#### PRESCRIBED PROCESSES - SCHEDULE 2

Any process for the production of chlorinated organic chemicals  
 Any process for the manufacture of paper pulp  
 Any process for the manufacture of asbestos cement  
 Any process for the manufacture of asbestos paper or board  
 Any industrial process involving the use in any 12 month period of more than 100Kg of the product resulting from the crushing of asbestos ore.

#### BACKGROUND CONCENTRATION

This is defined in the Regulations and in effect means the concentration of a substance present in the water supplied to, or abstracted for use, in the premises and which is present in rainfall onto the premises. If the trade process adds to that background concentration then the substance should be regarded as being present at a concentration greater than the background concentration.

# T1865 II-VI COMPOUND SEMICONDUCTORS LIMITED



Combined	Private	Abandoned	Manhole	Private Drain
Foul	Highway Drain	Culvert	Pumping Station	
Surface Water	Flang Man	Street	Adoption Agreement	
Watercourse	Backdrop			

Author : DAVIP2      Date : 16-07-2013  
 Title :                      Sheet NZ2721NE  
 Centre Point : 427991,521565      Scale : 1:900

The material contained on this plan has been reproduced from the Ordnance Survey OS 1:50,000 map of Great Britain. The information shown on this plan should be regarded as approximate and is intended for guidance only. The liability of any third parties or its employees by Northumbrian Water, its servants or agents for any variation. The actual position of any other works or features shown on the plan must be established by taking real levels in all cases. In the case of new works Northumbrian Water must be given two working days notice of their intention to undertake real level. The contractor and former private drains and sewers transferred to Northumbrian Water on 01/01/11 may not be shown but their presence should be established by NWN/09/0602. Where indicated on the plan there shall be abandoned structures, manholes or stands of pipes. If existing in the vicinity of these structures, structures, manholes, the appropriate Health & Safety precautions should be taken. Northumbrian Water accepts no liability in respect of claims, costs, losses or other liabilities which arise as the result of the production of this report or any failure to take adequate precautions. Emergency Telephone Number 0800 777 1100



**Our Ref:** JG/PD/T1864  
**Date:** 29<sup>th</sup> March 2018

The Company Secretary  
II-VI COMPOUND SEMICONDUCTORS LIMITED  
UNIT 20b  
OAKHAM ENTERPRISE PARK  
ASHWELL ROAD  
OAKHAM  
RUTLAND  
LE15 7TU

Dear Sirs

**CONSENT TO THE DISCHARGE OF TRADE EFFLUENT:**  
**REGISTER NUMBER T1864 (THE "CONSENT")**

I enclose the Consent to Discharge Trade Effluent from the premises situated at MILLENNIUM WAY, AYCLIFFE BUSINESS PARK, NEWTON AYCLIFFE, COUNTY DURHAM, DL5 6 JW.

If you have any queries regarding the Consent, please contact Peter Davies.

I take this opportunity to remind you that under powers granted by virtue of s124 Water Industry Act 1991 Northumbrian Water Limited may give a direction varying conditions which have been attached to the above Consent. These powers are available two years after the date of the enclosed document: or at an earlier time if both Trader and Northumbrian Water Limited agree in writing.

Your attention is drawn to the right of appeal which is noted below the signature on the Consent. An appeal against this Consent must normally be made to The Water Services Regulation Authority within two months of your receipt of this Notice. For your information his address is:-

The Water Services Regulation Authority  
Office of Water Services  
Centre City Tower  
7 Hill Street  
Birmingham  
B5 4UA

Please acknowledge receipt of the enclosed legal document.

Yours faithfully



**JEFF GRAHAM**  
**SCIENTIFIC SUPPORT WASTE WATER MANAGER**

CONSENT NUMBER: T1864

**WATER INDUSTRY ACT 1991**

**WATER ACT 2003**

**ENVIRONMENTAL PROTECTION ACT 1990**

**ENVIRONMENT ACT 1995**

**THE POLLUTION PREVENTION AND CONTROL ACT 1999**

**CONSENT TO THE DISCHARGE OF TRADE EFFLUENT**

**WHEREAS** II-VI COMPOUND SEMICONDUCTORS LIMITED (the "Trader") whose registered office is at: UNIT 20b, OAKHAM ENTERPRISE PARK, ASHWELL ROAD, OAKHAM, RUTLAND, LE15 7TU and whose registered company number is: 10505662 being the occupier of the trade premises at: MILLENNIUM WAY, AYCLIFFE BUSINESS PARK, NEWTON AYCLIFFE, COUNTY DURHAM, DL5 6 JW (the "Trade Premises") and by an application dated: 23<sup>rd</sup> January 2018 (the "Application") has applied to **NORTHUMBRIAN WATER LIMITED** (the "Company") for consent to discharge trade effluent from the Trade Premises into the Company's sewers.

**AND WHEREAS** the Environment Agency ("EA") or such other body carrying out its functions in respect of The Environmental Permitting (England and Wales) Regulations 2010 (SI 2010 No. 675) may issue a permit ("Permit") with regard to a regulated facility thereby setting out particular conditions with regard to part, or all, of the trade effluent discharged from the Trade Premises.

**NOW THEREFORE** in the exercise of the powers conferred upon it by the Water Industry Act 1991 (the "Act") and any Act amending or replacing the WIA the Company **HEREBY CONSENTS** to the discharge of the trade effluent by the Trader into its sewers **SUBJECT TO THE FOLLOWING CONDITIONS.**

1. **PERMIT**

This Consent is always subject to the provisions of any Permit in force from time to time in respect of prescribed processes carried out at the Trade Premises. In the event of any conflict between the provisions of this Consent and the provisions of the said Permit the more stringent requirement shall prevail.

2. **NATURE AND COMPOSITION**

The trade effluent discharged under this Consent shall be waste water containing those constituents specified in Section 4 of the G/02 Application insofar as the discharge of those constituents does not breach Clauses 7 to 11 of this Consent.



**3. POINT OF DISCHARGE**

The sewer into which the trade effluent may be discharged is the Company's public foul sewer Pipe Line Reference (PLR) NZ27217904 at the point shown more particularly in the plan attached hereto. No change shall be made in the location of the discharge point without the prior written consent of the Company.

**4. CHANGE IN CIRCUMSTANCE**

The Trader shall give to the Company two months' notice in writing of any changes or proposed changes in manufacturing process, raw materials, pre-treatment of the trade effluent or any other circumstances likely to alter the nature or composition of the trade effluent and of any circumstances resulting or likely to result in a cessation of the discharge. Any such changes will be a change of circumstances for the purposes of Section 125 (2) of the Act.

One of the circumstances that constitute a significant change in the nature of the trade effluent will be a change in the ratio of the Total Chemical Oxygen Demand to the Total 5 day Biochemical Oxygen Demand (ATU modification) of the trade effluent. In such a circumstance the Company will be entitled to issue a variation of the conditions of this Consent in accordance with Sections 124 and 125 of the Act.

**5. CHANGE OF NAME *etc***

5.1 The Trader shall notify the Company in writing within twenty one (21) days of any change to the name or address of the owner or occupier of the Trade Premises.

5.2 Where there is a change of occupier, this Consent is automatically terminated: the new occupier must serve an application upon the Company for consent to discharge.

**6. CONNECTIONS**

No connections shall be made to the Company's sewer system without the prior written approval of the Company and all such connections shall be constructed and maintained to the satisfaction of the Company at the expense of the Trader.

**7. MAXIMUM QUANTITY OF DISCHARGE**

The maximum amount of the trade effluent discharged during any one period of 24 hours shall not exceed thirty five (35) cubic metres, except where no trade effluent is discharged by the Trader from the Trade Premises for a period of six months when Clause 16 of this Consent applies.

**8. MAXIMUM RATE OF DISCHARGE**

The maximum rate at which the trade effluent may be discharged shall not exceed one (1) litre per second.

**9. TEMPERATURE**

No trade effluent shall be discharged which has a temperature higher than 30 degrees Celsius.

**10. pH VALUE**

No trade effluent shall be discharged having a pH value of less than 6 or greater than 10.5.

**11. MATTERS TO BE ELIMINATED PRIOR TO DISCHARGE TO SEWER**

The following are strictly prohibited from entry to the Company's sewers and shall be eliminated from the trade effluent before it is discharged to the sewers of the Company:

- 11.1 Any special category effluent listed in Schedule 1 to The Trade Effluents (Prescribed Processes and Substances) Regulations 1989 (S.I.1156) or any other statutory instrument amending them (the "Regulations") insofar as they are in a concentration greater than the background concentration as defined in the Regulations (see Appendix): unless the discharge of prescribed substances is permitted by an EA Notice of Determination.
- 11.2 Any substance which is not special category effluent but which is within List I designated from time to time under provisions of EC Directive 76/464/EEC and in particular Articles 6 and 12 thereof, or in the Table set down within section 7 of Schedule 1 of the Regulations, in so far as they are in a concentration greater than in water supplied to the Trade Premises for domestic uses (see Appendix): unless they are specifically authorised by a Permit or under section 11.6 below.
- 11.3 Any petroleum spirit or other solvent in mixture or in solution, at levels likely to cause a nuisance or produce flammable, harmful, or toxic vapours in the sewer system; or be dangerous to or cause injury to any person working in the sewer or at the sewage treatment works unless they are specifically authorised under section 11.6 below.
- 11.4 Any other constituent of the trade effluent specified in Section 4 of the Application as that which is likely to injure or obstruct sewers, or to make the treatment or disposal of the sewage from those sewers specially difficult or expensive, unless they are specifically authorised under section 11.6 below.

11.5 Any living genetically modified organisms.

11.6 Any constituents excepting the following not exceeding the concentrations stated:-

Constituents	Limit (milligrams per litre)	When expressed as
Suspended solids dried at 105°C	500	-
N-Methyl Pyrrolidone	160	-
Total Chemical Oxygen Demand (Dichromate Value)	8,000	O <sub>2</sub>
Hydrogen Peroxide	200	H <sub>2</sub> O <sub>2</sub>

Any constituents excepting the following not exceeding the loads stated:-		
Gallium	Load of 50 grammes per 24 hours	
Arsenic	Load of 50 grammes per 24 hours	
Ammoniacal Nitrogen	Load of 11 kilogrammes per 24 hours and not to exceed 600 grammes per hour	NH <sub>3</sub> as N
Fluoride	Load of 25.5 kilogrammes per 24 hours and not to exceed 1400 grammes per hour	
Total Phosphorus	Load of 11 kilogrammes per 24 hours and not to exceed 700 grammes per hour. Not exceeding site load total of six (6) kg/day	P

The analytical method used to determine the concentration of the constituent in any sample shall be that method used from time to time by Northumbrian Water Group's analyst or agent. The method will be a Standing Committee of Analysts or equivalent method, where "equivalent" relates to the same accuracy and precision.

## 12. ENTRY AND SAMPLES

12.1 An inspection chamber or manhole shall be provided and maintained by the Trader in the position indicated on the plan attached hereto and shall be so constructed and maintained as to enable a person authorised by the Company readily to obtain samples at any reasonable time of the trade effluent so discharged.

- 12.2 The Trader shall permit duly authorised representatives of the Company to inspect examine and test at all reasonable times any works and apparatus installed in connection with the trade effluent and to take samples of the trade effluent.
- 12.3 The Trader shall ensure that no matter other than trade effluent shall pass through the inspection chamber or manhole.

**13. MEASUREMENT AND DETERMINATION OF DISCHARGE**

- 13.1 If demanded by the Company a meter or some other apparatus suitable and adequate for measuring and automatically recording the volume, rate of discharge, nature and composition of the trade effluent shall be provided and maintained and tested by the Trader to the satisfaction of the Company.
- 13.2 If demanded by the Company records shall be kept by the Trader of the volume, rate of discharge, nature and composition of the trade effluent discharged into the sewer. Such records shall be kept available for inspection at all reasonable times by any authorised officer of the Company and copies shall be sent to the Company on demand.
- 13.3 If the measuring and/or recording apparatus ceases to function correctly then the Company must inform the Retailer immediately.  
The Trader will then as soon as reasonably practicable repair or replace any measuring and/or recording apparatus ensuring that the repaired or replaced apparatus is suitable and adequate for measuring and automatically recording the volume, rate of discharge, nature and composition of the trade effluent.
- 13.4 The Company and the Trader may from time to time agree alternative methods of complying with the foregoing provisions.

**14. BREACH OF CONDITIONS OF CONSENT**

The Trader shall notify the Company immediately by the quickest practicable means (usually by telephone) of any discharge from the Trade Premises which contravenes any of the provisions of this Consent. The initial notification shall be followed up by a written report which shall be submitted by the Trader to the Company within 7 working days setting out the nature of the breach, the circumstances that resulted in the breach and the action taken by the Trader.

**15. EXPIRY**

- 15.1 Unless otherwise agreed in writing by the Company where no trade effluent is discharged by the Trader from the Trade Premises for a period of six months the maximum amount of the trade effluent discharged during any one period of 24 hours shall be zero, *ie* this Consent will automatically expire.

- 15.2 If the Trader later wishes to resume the discharge after such six month period of non-discharge, a new application for a Consent must be served on the Company.
- 15.3 This Consent may be terminated at any time by agreement between the parties subject to a minimum of four weeks' notice on either side.
- 15.4 This Consent will expire automatically on the grounds set out at section 5.2 above.

**16. REFERENCE PURSUANT WATER INDUSTRY ACT 1991 PART IV CHAPTER III**

- 16.1 Where any notice of determination or other document is issued by the EA pursuant to section 132 Water Industry Act 1991 (the "Notice") in respect of any part of the trade effluent discharge from the Trade Premises the terms and conditions of the Notice will be given effect by this Consent.

**17. INTERPRETATION**

Words and expressions to which meanings are assigned by the Environment Act 1995, the Environmental Protection Act 1990, the Water Industry Act 1991, Water Resources Act 1991, Water Consolidation (Consequential Provisions) Act 1991 (or any legislation amending or affecting the same) shall have the same meaning assigned to them when used in this Consent.

*Dated this 29<sup>th</sup> March 2018*

**SIGNED:**

  
.....  
**JEFF GRAHAM**  
**SCIENTIFIC SUPPORT WASTE WATER MANAGER**

*For and on behalf of Northumbrian Water Limited*

**NOTE:**

Your attention is drawn to Section 122 Water Industry Act 1991 which provides that any person aggrieved by any condition attached to this consent may appeal to The Water Services Regulation Authority.

**ADDRESS TO WHICH ALL COMMUNICATIONS SHOULD BE SENT:**

Peter Davies  
Northumbrian Water Limited  
Leat House  
Pattinson Road  
Washington  
Tyne and Wear  
NE38 8LB

**Telephone:** 0345 717 1100  
**Email:** trade.effluent@nwl.co.uk

Attachments 1 Appendix  
2 Drainage Plan

---

## APPENDIX

### THE TRADE EFFLUENTS (PRESCRIBED PROCESSES AND SUBSTANCES) REGULATIONS 1989

(as at 31 August 1990)

Section 120 Water Industry Act 1991 and the above Regulations oblige Northumbrian Water Limited (unless it intends to refuse the application) to refer to the Environment Agency any application to discharge special category trade effluent which;

- a) contains any of the substances listed in Schedule 1 below in a concentration greater than the background concentration or,
- b) is derived from a process in Schedule 2 below if either chloroform or asbestos is present in a concentration greater than the background concentration.

In these circumstances consent for the discharge cannot be granted except to the extent that the Secretary of State consents and subject to any conditions he may specify.

#### PRESCRIBED SUBSTANCES - SCHEDULE 1

Mercury and its compounds	Dichlorvos
Cadmium and its compounds	1,2-Dichloroethane
gamma-Hexachlorocyclohexane	Trichlorobenzene
DDT Atrazine	
Pentachlorophenol and its compounds	Simazine
Hexachlorobenzene	Tributyltin compounds
Hexachlorobutadiene	Triphenyltin compounds
Aldrin Trifluralin	
Dieldrin	Fenitrothion
Endrin Azinphos-methyl	
Carbon Tetrachloride	Malathion
Polychlorinated Biphenyls	Endosulfan

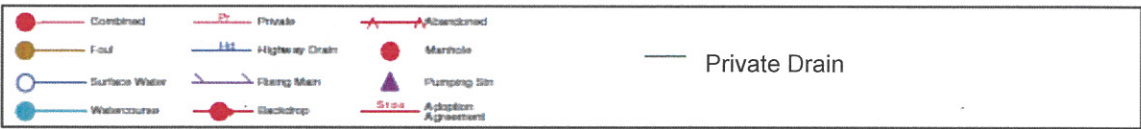
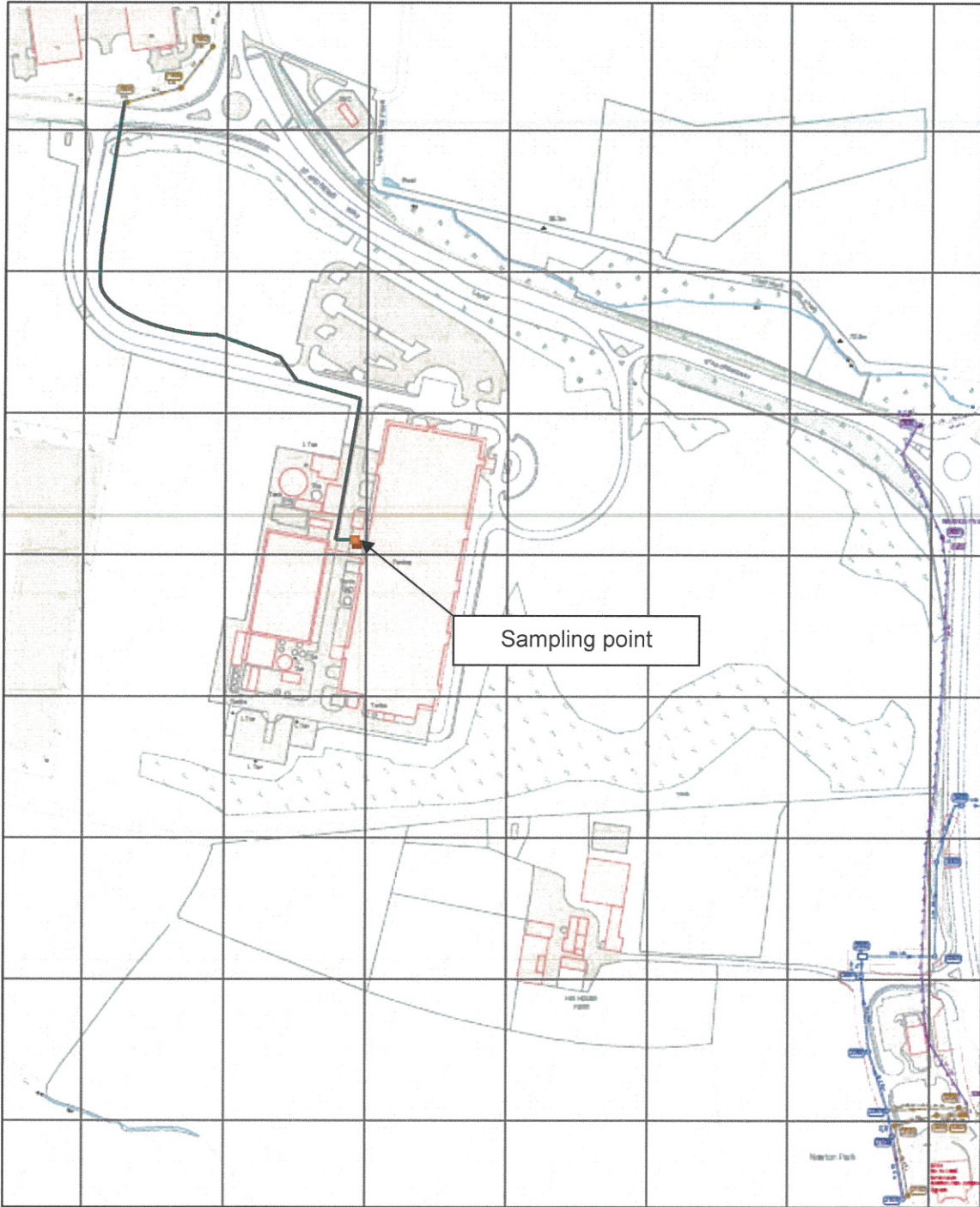
#### PRESCRIBED PROCESSES - SCHEDULE 2

Any process for the production of chlorinated organic chemicals  
 Any process for the manufacture of paper pulp  
 Any process for the manufacture of asbestos cement  
 Any process for the manufacture of asbestos paper or board  
 Any industrial process involving the use in any 12 month period of more than 100Kg of the product resulting from the crushing of asbestos ore.

#### BACKGROUND CONCENTRATION

This is defined in the Regulations and in effect means the concentration of a substance present in the water supplied to, or abstracted for use, in the premises and which is present in rainfall onto the premises. If the trade process adds to that background concentration then the substance should be regarded as being present at a concentration greater than the background concentration.

# T1864 II-VI COMPOUND SEMICONDUCTORS LIMITED



Author : DAVIP2      Date : 16-07-2013  
 Title :                      Sheet NZ2721NE  
 Centre Point : 427991.821565      Scale : 1:900

The material presented on this plan has been researched from the Environment Canterbury GIS database. The information shown on this plan should be regarded as approximate and is intended for guidance only. The liability of any third contractor is accepted by Northumbrian Water. It is advised that users should verify the actual position of any sewer mains or water mains on the plan prior to any excavation by using trial holes to all depths. In the case of water mains Northumbrian Water must be given 72 hours written notice of their intention to excavate that depth. This notice period does not apply to private drains and sewers transferred by Northumbrian Water on 01/10/11. Any red line shown on this plan should be investigated. Where indicated on the plan there could be abandoned asbestos cement mains or sheets of pipe. If according to the priority of these abandoned materials contact materials, the appropriate Health & Safety procedures should be taken. Northumbrian Water accepts no liability in respect of claims, costs, losses or other liabilities which arise as the result of the production of this plan or any failure to take adequate precautions. Emergency Telephone Number 0800 757 7500





**Our Ref:** JG/PD/T1863  
**Date:** 19<sup>th</sup> March 2018

The Company Secretary  
II-VI COMPOUND SEMICONDUCTORS LIMITED  
UNIT 20b  
OAKHAM ENTERPRISE PARK  
ASHWELL ROAD  
OAKHAM  
RUTLAND  
LE15 7TU

Dear Sirs

**CONSENT TO THE DISCHARGE OF TRADE EFFLUENT:**  
**REGISTER NUMBER T1863 (THE "CONSENT")**

I enclose the Consent to Discharge Trade Effluent from the premises situated at: MILLENNIUM WAY, AYCLIFFE BUSINESS PARK, NEWTON AYCLIFFE, COUNTY DURHAM, DL5 6 JW.

If you have any queries regarding the Consent, please contact Peter Davies.

I take this opportunity to remind you that under powers granted by virtue of s124 Water Industry Act 1991 Northumbrian Water Limited may give a direction varying conditions which have been attached to the above Consent. These powers are available two years after the date of the enclosed document: or at an earlier time if both Trader and Northumbrian Water Limited agree in writing.

Your attention is drawn to the right of appeal which is noted below the signature on the Consent. An appeal against this Consent must normally be made to The Water Services Regulation Authority within two months of your receipt of this Notice. For your information his address is:-

The Water Services Regulation Authority  
Office of Water Services  
Centre City Tower  
7 Hill Street  
Birmingham  
B5 4UA

Please acknowledge receipt of the enclosed legal document.

Yours faithfully



PP  
**JEFF GRAHAM**  
**SCIENTIFIC SUPPORT WASTE WATER MANAGER**

CONSENT NUMBER: T1863

**WATER INDUSTRY ACT 1991**

**WATER ACT 2003**

**ENVIRONMENTAL PROTECTION ACT 1990**

**ENVIRONMENT ACT 1995**

**THE POLLUTION PREVENTION AND CONTROL ACT 1999**

**CONSENT TO THE DISCHARGE OF TRADE EFFLUENT**

**WHEREAS** II-VI COMPOUND SEMICONDUCTORS LIMITED (the "Trader") whose registered office is at: UNIT 20b, OAKHAM ENTERPRISE PARK, ASHWELL ROAD, OAKHAM, RUTLAND, LE15 7TU and whose registered company number is: 10505662 being the occupier of the trade premises at: MILLENNIUM WAY, AYCLIFFE BUSINESS PARK, NEWTON AYCLIFFE, COUNTY DURHAM, DL5 6 JW (the "Trade Premises") and by an application dated: 23<sup>rd</sup> January 2018 (the "Application") has applied to **NORTHUMBRIAN WATER LIMITED** (the "Company") for consent to discharge trade effluent from the Trade Premises into the Company's sewers.

**AND WHEREAS** the Environment Agency ("EA") or such other body carrying out its functions in respect of The Environmental Permitting (England and Wales) Regulations 2010 (SI 2010 No. 675) may issue a permit ("Permit") with regard to a regulated facility thereby setting out particular conditions with regard to part, or all, of the trade effluent discharged from the Trade Premises.

**NOW THEREFORE** in the exercise of the powers conferred upon it by the Water Industry Act 1991 (the "Act") and any Act amending or replacing the WIA the Company **HEREBY CONSENTS** to the discharge of the trade effluent by the Trader into its sewers **SUBJECT TO THE FOLLOWING CONDITIONS.**

1. **PERMIT**

This Consent is always subject to the provisions of any Permit in force from time to time in respect of prescribed processes carried out at the Trade Premises. In the event of any conflict between the provisions of this Consent and the provisions of the said Permit the more stringent requirement shall prevail.

2. **NATURE AND COMPOSITION**

The trade effluent discharged under this Consent shall be waste water containing those constituents specified in Section 4 of the G/02 Application insofar as the discharge of those constituents does not breach Clauses 7 to 11 of this Consent.

**3. POINT OF DISCHARGE**

The sewer into which the trade effluent may be discharged is the Company's public foul sewer, Pipe Line Reference (PLR) NZ27217904 at the point shown more particularly in the plan attached hereto. No change shall be made in the location of the discharge point without the prior written consent of the Company.

**4. CHANGE IN CIRCUMSTANCE**

The Trader shall give to the Company two months' notice in writing of any changes or proposed changes in manufacturing process, raw materials, pre-treatment of the trade effluent or any other circumstances likely to alter the nature or composition of the trade effluent and of any circumstances resulting or likely to result in a cessation of the discharge. Any such changes will be a change of circumstances for the purposes of Section 125 (2) of the Act.

One of the circumstances that constitute a significant change in the nature of the trade effluent will be a change in the ratio of the Total Chemical Oxygen Demand to the Total 5 day Biochemical Oxygen Demand (ATU modification) of the trade effluent. In such a circumstance the Company will be entitled to issue a variation of the conditions of this Consent in accordance with Sections 124 and 125 of the Act.

**5. CHANGE OF NAME *etc***

5.1 The Trader shall notify the Company in writing within twenty one (21) days of any change to the name or address of the owner or occupier of the Trade Premises.

5.2 Where there is a change of occupier, this Consent is automatically terminated: the new occupier must serve an application upon the Company for consent to discharge.

**6. CONNECTIONS**

No connections shall be made to the Company's sewer system without the prior written approval of the Company and all such connections shall be constructed and maintained to the satisfaction of the Company at the expense of the Trader.

**7. MAXIMUM QUANTITY OF DISCHARGE**

The maximum amount of the trade effluent discharged during any one period of 24 hours shall not exceed one thousand (1,000) cubic metres, except where no trade effluent is discharged by the Trader from the Trade Premises for a period of six months when Clause 16 of this Consent applies.

8. **MAXIMUM RATE OF DISCHARGE**

The maximum rate at which the trade effluent may be discharged shall not exceed twelve (12) litres per second.

9. **TEMPERATURE**

No trade effluent shall be discharged which has a temperature higher than 30 degrees Celsius.

10. **pH VALUE**

No trade effluent shall be discharged having a pH value of less than 6 or greater than 10.

11. **MATTERS TO BE ELIMINATED PRIOR TO DISCHARGE TO SEWER**

The following are strictly prohibited from entry to the Company's sewers and shall be eliminated from the trade effluent before it is discharged to the sewers of the Company:

- 11.1 Any special category effluent listed in Schedule 1 to The Trade Effluents (Prescribed Processes and Substances) Regulations 1989 (S.I.1156) or any other statutory instrument amending them (the "Regulations") insofar as they are in a concentration greater than the background concentration as defined in the Regulations (see Appendix): unless the discharge of prescribed substances is permitted by an EA Notice of Determination.
- 11.2 Any substance which is not special category effluent but which is within List I designated from time to time under provisions of EC Directive 76/464/EEC and in particular Articles 6 and 12 thereof, or in the Table set down within section 7 of Schedule 1 of the Regulations, in so far as they are in a concentration greater than in water supplied to the Trade Premises for domestic uses (see Appendix): unless they are specifically authorised by a Permit or under section 11.6 below.
- 11.3 Any petroleum spirit or other solvent in mixture or in solution, at levels likely to cause a nuisance or produce flammable, harmful, or toxic vapours in the sewer system; or be dangerous to or cause injury to any person working in the sewer or at the sewage treatment works unless they are specifically authorised under section 11.6 below.
- 11.4 Any other constituent of the trade effluent specified in Section 4 of the Application as that which is likely to injure or obstruct sewers, or to make the treatment or disposal of the sewage from those sewers specially difficult or expensive, unless they are specifically authorised under section 11.6 below.

- 11.5 Any living genetically modified organisms.
- 11.6 Any constituents excepting the following not exceeding the concentrations stated:-

Constituents	Limit (milligrams per litre)	When expressed as
Suspended solids dried at 105°C	500	-
Total Chemical Oxygen Demand (Dichromate Value)	500	O <sub>2</sub>
Ammoniacal Nitrogen	15	NH <sub>3</sub> as N
Fluoride	30	F
Chloride	1,200	-
Hydrogen Peroxide	50	H <sub>2</sub> O <sub>2</sub>
Total Phosphorus	100	P

- 11.7 Total Phosphorus discharged from site shall not exceed six (6) kg/day
- 11.8 The maximum discharge flow rate containing either Phosphorus and/or Ammoniacal Nitrogen shall not exceed 1,500 litres per hour
- 11.9 The Trader shall notify Northumbrian Water's Trade Effluent department once the Phosphorus concentration limit is greater than >50 mg/l
- 11.10 The Trader shall notify Northumbrian Water's Trade Effluent department of the discharge volumes associated with Phosphorus concentrations greater than >50 mg/l

The analytical method used to determine the concentration of the constituent in any sample shall be that method used from time to time by Northumbrian Water Group's analyst or agent. The method will be a Standing Committee of Analysts or equivalent method, where "equivalent" relates to the same accuracy and precision.

## 12. ENTRY AND SAMPLES

- 12.1 An inspection chamber or manhole shall be provided and maintained by the Trader in the position indicated on the plan attached hereto and shall be so constructed and maintained as to enable a person authorised by the Company readily to obtain samples at any reasonable time of the trade effluent so discharged.
- 12.2 The Trader shall permit duly authorised representatives of the Company to inspect examine and test at all reasonable times any works and apparatus installed in connection with the trade effluent and to take samples of the trade effluent.

- 12.3 The Trader shall ensure that no matter other than trade effluent shall pass through the inspection chamber or manhole.

**13. MEASUREMENT AND DETERMINATION OF DISCHARGE**

- 13.1 If demanded by the Company a meter or some other apparatus suitable and adequate for measuring and automatically recording the volume, rate of discharge, nature and composition of the trade effluent shall be provided and maintained and tested by the Trader to the satisfaction of the Company.
- 13.2 If demanded by the Company records shall be kept by the Trader of the volume, rate of discharge, nature and composition of the trade effluent discharged into the sewer. Such records shall be kept available for inspection at all reasonable times by any authorised officer of the Company and copies shall be sent to the Company on demand.
- 13.3 If the measuring and/or recording apparatus ceases to function correctly then the Company must inform the Retailer immediately.  
The Trader will then as soon as reasonably practicable repair or replace any measuring and/or recording apparatus ensuring that the repaired or replaced apparatus is suitable and adequate for measuring and automatically recording the volume, rate of discharge, nature and composition of the trade effluent.
- 13.4 The Company and the Trader may from time to time agree alternative methods of complying with the foregoing provisions.

**14. BREACH OF CONDITIONS OF CONSENT**

The Trader shall notify the Company immediately by the quickest practicable means (usually by telephone) of any discharge from the Trade Premises which contravenes any of the provisions of this Consent. The initial notification shall be followed up by a written report which shall be submitted by the Trader to the Company within 7 working days setting out the nature of the breach, the circumstances that resulted in the breach and the action taken by the Trader.

**15. EXPIRY**

- 15.1 Unless otherwise agreed in writing by the Company where no trade effluent is discharged by the Trader from the Trade Premises for a period of six months the maximum amount of the trade effluent discharged during any one period of 24 hours shall be zero, *ie* this Consent will automatically expire.
- 15.2 If the Trader later wishes to resume the discharge after such six month period of non-discharge, a new application for a Consent must be served on the Company.

- 15.3 This Consent may be terminated at any time by agreement between the parties subject to a minimum of four weeks' notice on either side.
- 15.4 This Consent will expire automatically on the grounds set out at section 5.2 above.

16. **REFERENCE PURSUANT WATER INDUSTRY ACT 1991 PART IV CHAPTER III**


- 16.1 Where any notice of determination or other document is issued by the EA pursuant to section 132 Water Industry Act 1991 (the "Notice") in respect of any part of the trade effluent discharge from the Trade Premises the terms and conditions of the Notice will be given effect by this Consent.

17. **INTERPRETATION**

Words and expressions to which meanings are assigned by the Environment Act 1995, the Environmental Protection Act 1990, the Water Industry Act 1991, Water Resources Act 1991, Water Consolidation (Consequential Provisions) Act 1991 (or any legislation amending or affecting the same) shall have the same meaning assigned to them when used in this Consent.

*Dated this 19<sup>th</sup> March 2018*

**SIGNED:**



PP

.....  
**JEFF GRAHAM**  
**SCIENTIFIC SUPPORT WASTE WATER MANAGER**

*For and on behalf of Northumbrian Water Limited*

**NOTE:**

Your attention is drawn to Section 122 Water Industry Act 1991 which provides that any person aggrieved by any condition attached to this consent may appeal to The Water Services Regulation Authority.

**ADDRESS TO WHICH ALL COMMUNICATIONS SHOULD BE SENT:**

Peter Davies  
Northumbrian Water Limited  
Leat House  
Pattinson Road  
Washington  
Tyne and Wear  
NE38 8LB

**Telephone:** 0345 717 1100  
**Email:** trade.effluent@nwl.co.uk

Attachments 1 Appendix  
2 Drainage Plan



## APPENDIX

### THE TRADE EFFLUENTS (PRESCRIBED PROCESSES AND SUBSTANCES) REGULATIONS 1989

(as at 31 August 1990)

Section 120 Water Industry Act 1991 and the above Regulations oblige Northumbrian Water Limited (unless it intends to refuse the application) to refer to the Environment Agency any application to discharge special category trade effluent which;

- a) contains any of the substances listed in Schedule 1 below in a concentration greater than the background concentration or,
- b) is derived from a process in Schedule 2 below if either chloroform or asbestos is present in a concentration greater than the background concentration.

In these circumstances consent for the discharge cannot be granted except to the extent that the Secretary of State consents and subject to any conditions he may specify.

#### PRESCRIBED SUBSTANCES - SCHEDULE 1

Mercury and its compounds	Dichlorvos
Cadmium and its compounds	1,2-Dichloroethane
gamma-Hexachlorocyclohexane	Trichlorobenzene
DDT Atrazine	
Pentachlorophenol and its compounds	Simazine
Hexachlorobenzene	Tributyltin compounds
Hexachlorobutadiene	Triphenyltin compounds
Aldrin Trifluralin	
Dieldrin	Fenitrothion
Endrin Azinphos-methyl	
Carbon Tetrachloride	Malathion
Polychlorinated Biphenyls	Endosulfan

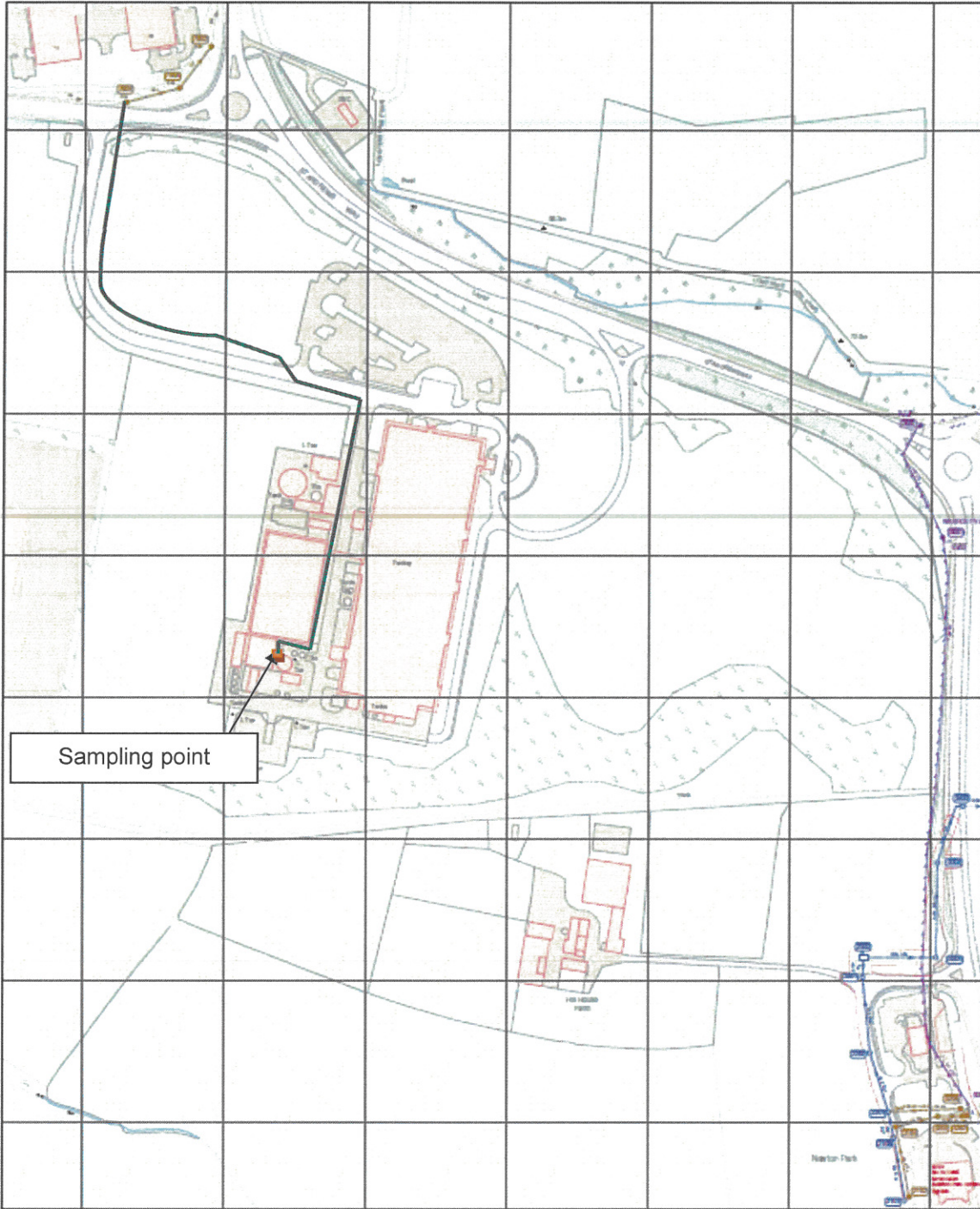
#### PRESCRIBED PROCESSES - SCHEDULE 2

Any process for the production of chlorinated organic chemicals  
 Any process for the manufacture of paper pulp  
 Any process for the manufacture of asbestos cement  
 Any process for the manufacture of asbestos paper or board  
 Any industrial process involving the use in any 12 month period of more than 100Kg of the product resulting from the crushing of asbestos ore.

#### BACKGROUND CONCENTRATION

This is defined in the Regulations and in effect means the concentration of a substance present in the water supplied to, or abstracted for use, in the premises and which is present in rainfall onto the premises. If the trade process adds to that background concentration then the substance should be regarded as being present at a concentration greater than the background concentration.

# T1863 II-VI COMPOUND SEMICONDUCTORS LIMITED



Combined	Private	Abandoned	Manhole
Foul	Highway Drain	Pumping Station	Private Drain
Surface Water	Flaming Man	Stop	Adoption Agreement
Watercourse	Backdrop		

Author : DAVIP2      Date : 16-07-2013  
 Title :                      Sheet: NZ2721NE  
 Centre Point : 427991,521565      Scale : 1:900

The material presented on this plan has been reproduced from an Ordnance Survey (OS) map. The information shown on this plan should be regarded as approximate and is intended for guidance only. The liability of any third contractor is accepted by Northumbrian Water. No warranty or guarantee is given for any contract. The actual position of any other mains or water services on the plan may be established by using trial holes in all cases. In the case of water mains Northumbrian Water must be given two working days notice of their intention to excavate any holes. Private contractors and linear service owners and users responsible for Northumbrian Water on 031 5211 may not be shown but their presence should be anticipated. WATERBODIES: Where indicated on the plan there could be abandoned subsurface treatment reservoirs or ponds. If excavation on the vicinity of these abandoned structures is required, the appropriate Health & Safety precautions should be taken. Northumbrian Water accepts no liability in respect of claims, costs, losses or other liabilities which arise as the result of the production of the map or any failure to take adequate precautions. Emergency Telephone Number: 0800 777 1100



## **APPENDIX III – F1 FORM**

# Application for an environmental permit

## Part F1 – Charges and declarations



Fill in this part for all applications for installations, waste operations, mining waste operations, water discharges, point source groundwater discharges and groundwater discharges onto land. Please check that this is the latest version of the form available from our website.

Please read through this form and the guidance notes that came with it.

The form can be:

- 1) saved onto a computer and then filled in. Please note that the form follows a logic that means questions will open or stay closed depending on a previous answer. So you may not be able to enter text in some boxes.
- 2) printed off and filled in by hand. Please write clearly in the answer spaces.

It will take less than two hours to fill in this part of the application form.

### Contents

- 1 Working out charges
- 2 Payment
- 3 Privacy notice
- 4 Confidentiality and national security
- 5 Declaration
- 6 Application checklist
- 7 How to contact us
- 8 Where to send your application

Each individual who is applying for their name to appear on the permit must complete the declaration in section 5. You will have to print a separate copy of the declaration page for each additional individual to complete.

## 1 Working out charges

You must fill in this section.

You have to submit an application fee with your application. You can find out the charge by searching for 'Environment Agency charging scheme and guidance: environmental permits' at [www.gov.uk/government/organisations/environment-agency](http://www.gov.uk/government/organisations/environment-agency).

Please remember that the charges are revised on 1 April each year and that there is an annual subsistence charge to cover the costs we incur in the ongoing regulation of the permit.

**Table 1 – Type of application (fill number of activity being applied for in each column)**

Installation	Waste	Mining waste	Medium Combustion Plant (MCP)/Specified Generator (SG)	Water discharge/point source discharge to groundwater	Groundwater spreading onto land

**Table 2 – Charge type (A)**

Charge activity reference	Charge activity description	What are you applying to do? E.g. new, minor variation, normal variation, substantial variation, surrender, low risk surrender, transfer	Amount
e.g. 1.17.3	e.g. Sect 5.2 landfill for hazardous waste	e.g. transfer	e.g. £5,561
Total A			

**1 Working out charges (you must fill in this section), continued****Table 3 – Additional assessment charges (B)**

Part 1.19 Charges for plans and assessments			Tick appropriate
Reference	Plan or assessment	Charge	
1.19.1	Waste recovery plan	£1,231	<input type="checkbox"/>
1.19.2	Habitats assessment (except where the application activity is a flood risk activity)	£779	<input type="checkbox"/>
1.19.3	Fire prevention plan (except where the application activity is a farming installation)	£1,241	<input type="checkbox"/>
1.19.4	Pests management plan (except where the application activity is a farming installation)	£1,241	<input type="checkbox"/>
1.19.5	Emissions management plan (except where the application activity is a farming installation)	£1,241	<input type="checkbox"/>
1.19.6	Odour management plan (except where the application activity is a farming installation)	£1,246	<input type="checkbox"/>
1.19.7	Noise and vibration management plan (except where the application activity is a farming installation)	£1,246	<input type="checkbox"/>
1.19.8	Ammonia emissions risk assessment (intensive farming applications only)	£620	<input type="checkbox"/>
1.19.9	Dust and bio-aerosol management plan (intensive farming applications only)	£620	<input type="checkbox"/>
	Advertising	£500	<input type="checkbox"/>
Total B			

Total charges

Total A plus total B

\_\_\_\_\_

**2 Payment**

Tick below to show how you have paid.

Cheque

Postal order

Cash

 Tick below to confirm you are enclosing cash with the application

Credit or debit card

Electronic transfer (for example, BACS)

Remittance number

\_\_\_\_\_

Date paid (DD/MM/YYYY)

\_\_\_\_\_

**How to pay****Paying by cheque, postal order or cash**

Cheque details

Cheque made payable to

\_\_\_\_\_

Cheque number

\_\_\_\_\_

Amount

£ \_\_\_\_\_

You should make cheques or postal orders payable to 'Environment Agency' and make sure they have 'A/c Payee' written across them if it is not already printed on.

Please write the name of your company and application reference number on the back of your cheque or postal order. **We will not** accept cheques with a future date on them.

We do not recommend sending cash through the post. If you cannot avoid this, please use a recorded delivery postal service and enclose your application reference details. Please tick the box below to confirm you are enclosing cash.

I have enclosed cash with my application

## 2 Payment, continued

### Paying by credit or debit card

If you are paying by credit or debit card we can call you. We will destroy your card details once we have processed your payment. We can accept payments by Visa, MasterCard or Maestro card only.

Please call me to arrange payment by debit or debit card

### Paying by electronic transfer BACS reference

If you choose to pay by electronic transfer you will need to use the following information to make your payment.

Company name	Environment Agency
Company address	SSCL (Environment Agency), PO Box 797, Newport Gwent, NP10 8FZ
Bank	RBS/NatWest
Address	London Corporate Service Centre, CPB Services, 2nd Floor, 280 Bishopsgate, London EC2M 4RB
Sort code	60-70-80
Account number	10014411
Account name	EA RECEIPTS
Payment reference number	PSCAPPXXXXYYY

You need to create your own reference number. It should begin with PSCAPP (to reflect that the application is for a permitted activity) and it should include the first five letters of the company name (replacing the X's in the above reference number) and a unique numerical identifier (replacing the Y's in the above reference number). The reference number that you supply will appear on our bank statements.

You should also email your payment details and reference number to [ea\\_fsc\\_ar@sscl.gse.gov.uk](mailto:ea_fsc_ar@sscl.gse.gov.uk).

If you are making your payment from outside the United Kingdom, it must be in sterling. Our IBAN number is GB23NWK60708010014411 and our SWIFTBIC number is NWBKGB2L.

If you do not quote your reference number, there may be a delay in processing your payment and application.

Now read section 3 below

## 3 Privacy notice

The Environment Agency runs the environmental permit application service.

We are the data controller for this service. A data controller determines how and why personal information is processed.

Our personal information charter explains:

- your rights
- what we do with your personal information

We're allowed to process your personal information because we have official authority as the environmental regulator. We need this information to carry out a task in the public interest that is set out in law. As the data controller, when you apply for an environmental permit, we have a legal obligation to process your personal data under the Environmental Permitting Regulations. The second lawful basis for processing your personal data is to comply with this legal obligation.

We need your personal information to process your environmental permit application. If you do not give us this information we cannot issue a permit to you. After we've issued a permit to you, we use your personal information:

- to check that you're complying with your permit
- during any potential enforcement action

### What personal information we collect

If you're the individual applicant, director or company secretary of a company applying or a technically competent manager we need your:

- name
- date of birth
- address
- email address

If you're the agent, consultant, employee responsible for the activity or the employee responsible for billing and invoicing we need your:

- name
- address
- email address

### 3 Privacy notice, continued

If you're the applicant we need details of any:

- convictions
- bankruptcy

We also collect any questions or feedback you leave, including your email address if you contact us.

#### Your responsibility with other people's personal information

If you've included personal information about other people on your application, you must tell them. You must provide them with a copy of this privacy notice so that they know how their personal information will be used.

#### What we do with your personal information

We use your personal information to help us decide whether to issue you with a permit.

The information (except dates of birth) is available online on our consultation website during the consultation period. This website is available to everyone so your information may be seen outside the European Economic Area.

After consultation we put all the information (except dates of birth) you give us in your application on our public register.

If you can demonstrate that any information you send us is commercially or industrially confidential, we'll consider withholding that information from our public register.

If you think that the information you'll send us may be a threat to national security you must contact the Secretary Of State before you apply. You must still send us that information with your application. We will not include this information on our public register unless the Secretary of State decides it can be included.

See the environmental permitting guidance for guidance on national security.

We may use your email address to contact you for user research to improve our service. You don't have to take part in the research.

#### Where your personal information is processed and stored

We store and process your personal information on servers in the UK. We will not host your personal information outside the European Economic Area.

We do not use your personal information to make an automated decision or for automated profiling.

#### How long we keep your personal information

We keep your personal information while your permit is in use and for 7 years after you surrender your permit. If the permit is for a landfill site, we keep the data for 10 years after surrender.

#### Removing personal information from the public register

We will remove your personal information from the public register if:

- you withdraw your application
- we refuse your application and the time limit for appealing the decision has expired or an appeal is dismissed
- the information is no longer relevant for public participation purposes under the Environmental Permitting Regulations

#### Contact

Our Data Protection Team gives independent advice. They monitor how the Environment Agency uses your personal information.

If you have questions or concerns about how we process personal information, or to make a complaint or request relating to data protection, please contact:

Address: Data Protection Team  
Environment Agency  
Horizon House  
Deanery Road  
Bristol  
BS1 5AH

Email: [dataprotection@environment-agency.gov.uk](mailto:dataprotection@environment-agency.gov.uk)

You can also make a complaint to the Information Commissioner's Office (ICO).

The ICO is the supervisory authority for data protection legislation. The ICO website has a full list of your rights under data protection legislation.

Now read section 4 below

## 4 Confidentiality and national security

### Confidentiality

We will normally put all the information in your application on a public register of environmental information. However, we may not include certain information in the public register if this is in the interests of national security, or because the information is confidential.

You can ask for information to be made confidential by enclosing a letter with your application giving your reasons. If we agree with your request, we will tell you and not include the information in the public register. If we do not agree with your request, we will let you know how to appeal against our decision, or you can withdraw your application. You can find guidance on confidentiality in 'Environmental permitting guidance: core guidance', published by Defra and available via our website at [www.gov.uk/government/organisations/environment-agency](http://www.gov.uk/government/organisations/environment-agency).

**Only tick the box below if you wish to claim confidentiality for your application**

Please treat the information in my application as confidential

### National security

You can tell the Secretary of State that you believe including information on a public register would not be in the interests of national security. You must enclose a letter with your application telling us that you have told the Secretary of State and you must still include the information in your application. We will not include the information in the public register unless the Secretary of State decides that it should be included.

You can find guidance on national security in 'Environmental permitting guidance: core guidance', published by Defra and available via our website at [www.gov.uk/government/organisations/environment-agency](http://www.gov.uk/government/organisations/environment-agency).

You cannot apply for national security via this application.

Now fill in section 5

## 5 Declaration

**If you knowingly or carelessly make a statement that is false or misleading to help you get an environmental permit (for yourself or anyone else), you may be committing an offence under the Environmental Permitting (England and Wales) Regulations 2016.**

**A relevant person should make the declaration (see the guidance notes on part F1). An agent acting on behalf of an applicant is NOT a relevant person.**

Each individual (or individual trustee) who is applying for their name to appear on the permit must complete this declaration. You will have to print a separate copy of this page for each additional individual to complete.

**If you are transferring all or part of your permit, both you and the person receiving the permit must make the declaration. You must fill in the declaration directly below; the person receiving the permit must fill in the declaration under the heading 'For transfers only'.**

**Note: we will issue a letter to both current and new holders to confirm the transfer. If you are changing address we will need to send this letter to your new address; therefore please tell us your new address in a separate letter.**

**If you are unable to trace one or more of the current permit holders please see below under the transfers declaration.**

**I declare that the information in this application is true to the best of my knowledge and belief. I understand that this application may be refused or approval withdrawn if I give false or incomplete information.**

If you deliberately make a statement that is false or misleading in order to get approval you may be prosecuted.

I confirm that my standard facility will fully meet the rules that I have applied for (this only applies if the application includes standard facilities)

Tick this box to confirm that you understand and agree with the declaration above, then fill in the details below (you do not have to provide a signature as well)

Tick this box if you do not want us to use information from any ecological survey that you have supplied with your application (for further information please see the guidance notes on part F1)

Name  
Title (Mr, Mrs, Miss and so on) \_\_\_\_\_  
First name \_\_\_\_\_  
Last name \_\_\_\_\_  
on behalf of \_\_\_\_\_  
(if relevant; for example, a company or organisation and so on)  
Position \_\_\_\_\_  
(if relevant; for example, in a company or organisation and so on)



## 5 Declaration, continued

Today's date (DD/MM/YYYY) \_\_\_\_\_

For transfers only – declaration for person receiving the permit

A relevant person should make the declaration (see the guidance notes on part F1). An agent acting on behalf of an applicant is NOT a relevant person.

I declare that the information in this application to transfer an environmental permit to me is true to the best of my knowledge and belief. I understand that this application may be refused or approval withdrawn if I give false or incomplete information.

**Note:** If you cannot trace a person or persons holding the permit you may be able to transfer the permit without their declaration as above. Please contact us to discuss this and supply evidence in your application to confirm you are unable to trace one or all of the permit holders.

If you deliberately make a statement that is false or misleading in order to get approval you may be prosecuted.

Tick this box to confirm that you understand and agree with the declaration above, then fill in the details below (you do not have to provide a signature as well)

Name \_\_\_\_\_  
Title (Mr, Mrs, Miss and so on) \_\_\_\_\_  
First name \_\_\_\_\_  
Last name \_\_\_\_\_  
on behalf of \_\_\_\_\_  
(if relevant; for example, a company or organisation and so on)  
Position \_\_\_\_\_  
(if relevant; for example, in a company or organisation and so on)  
Today's date (DD/MM/YYYY) \_\_\_\_\_

Now go to section 6

## 6 Application checklist

You must fill in this section.

If your application is not complete we will return it to you. If you aren't sure about what you need to send, speak to us before you submit your application.

You must do the following:

- Complete legibly all parts of this form that are relevant to you and your activities
- Identify relevant supporting information in the form and send it with the application
- List all the documents you are sending in the table below. If necessary, continue on a separate sheet. This separate sheet also needs to have a reference number and you should include it in the table below
- For new permits or any changes to the site plan, provide a plan that meets the standards given in the guidance note on part F1
- Provide a supporting letter for any claim that information is confidential
- Get the declaration completed by a relevant person (not an agent)
- Send the correct fee

**6 Application checklist, continued**

Question reference	Document title	Document reference

**7 How to contact us**

If you need help filling in this form, please contact the person who sent it to you or contact us as shown below.

General enquiries: 03708 506 506 (Monday to Friday, 8am to 6pm)

Textphone: 03702 422549 (Monday to Friday, 8am to 6pm)

Email: [enquiries@environment-agency.gov.uk](mailto:enquiries@environment-agency.gov.uk)

Website: [www.gov.uk/government/organisations/environment-agency](http://www.gov.uk/government/organisations/environment-agency)

If you are happy with our service, please tell us. It helps us to identify good practice and encourages our staff. If you're not happy with our service, or you would like us to review a decision we have made, please let us know. More information on how to do this is available at: <https://www.gov.uk/government/organisations/environment-agency/about/complaints-procedure>.

**Please tell us if you need information in a different language or format (for example, in large print) so we can keep in touch with you more easily.**

**8 Where to send your application**

For how many copies to send see the guidance note on part F1.

Please send your filled in application form to:

For water discharges by email to [PSC-WaterQuality@environment-agency.gov.uk](mailto:PSC-WaterQuality@environment-agency.gov.uk)

For waste and installations by email to [PSC@environment-agency.gov.uk](mailto:PSC@environment-agency.gov.uk)

Or

Environment Agency Permitting and Support Centre  
Environmental Permitting Team  
Quadrant 2  
99 Parkway Avenue  
Parkway Business Park  
Sheffield  
S9 4WF

**Do you want all information to be sent to you by email?**

Please tick this box if you wish to have all communication about this application sent via email (we will use the details provided in part A)

## Feedback

(You don't have to answer this part of the form, but it will help us improve our forms if you do.)

We want to make our forms easy to fill in and our guidance notes easy to understand. Please use the space below to give us any comments you may have about this form or the guidance notes that came with it.

How long did it take you to fill in this form? \_\_\_\_\_

We will use your feedback to improve our forms and guidance notes, and to tell the Government how regulations could be made simpler.

Would you like a reply to your feedback?

Yes please

No thank you



### For Environment Agency use only

Date received (DD/MM/YYYY)  
\_\_\_\_\_

Our reference number  
\_\_\_\_\_

Payment received?

No

Yes  Amount received

£ \_\_\_\_\_