

BRM E-Scrap Permit Operating Techniques – Summary Document

1. Introduction

This document in combination with the E-Scrap Process Flow Diagrams (808678-WOOD-ZZ-XX-PC-O-00001_S3_P01) provided at Appendix A constitute the Operating Techniques for the BRM E-Scrap permit.

These operating techniques are currently a work in progress and are mostly complete. Depending on the outcome of ongoing engineering studies and assessments, the following items are anticipated to be incorporated in the near future as design of the facility progresses:

- Addition of an optional bulk container/vehicle loading system
- Clarification of the processing (shredding) systems and options for dust/fines extraction
- Finalisation of some minor design elements related to the exact configuration/connection of plant and equipment.

It is expected that the above items will be completed within 4 months of issue of this report and a finalised version of the Operating Techniques will be issued to the Environment Agency on completion.

2. Operating Techniques

Swimlane Process Flow Diagrams have been used to produce the operating techniques for the BRM E-Scrap Facility. The use of flow diagrams rather than a simply written text is considered best practise. The flow diagrams provide more clarity and are easier to communicate and train people.

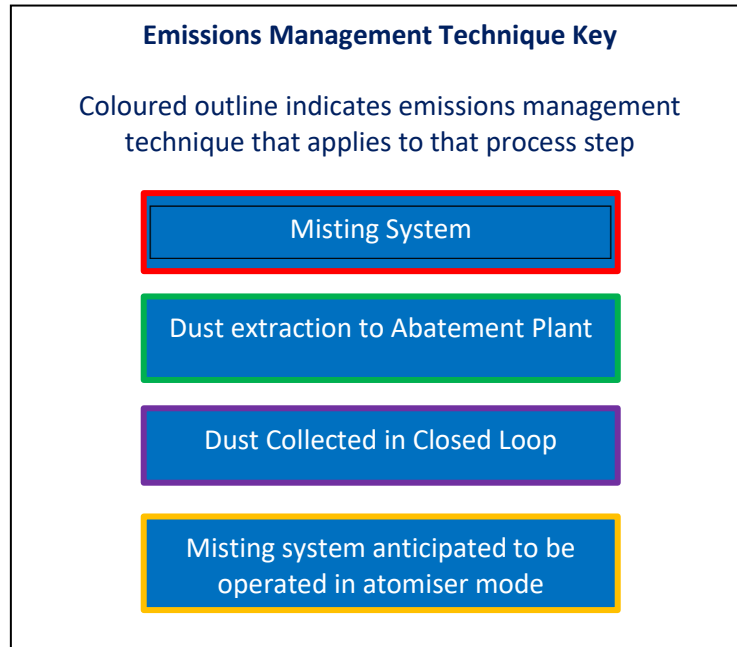
Flow diagrams are highly visual and can be clearly related to the processes carried out by the facility. The flow diagrams are “process maps” with show the activities and processes carried out at the facility in a logical step wise manner.

The process maps are split into four distinct process areas related to key stages of waste management at the facility as detailed below:

- Pre-acceptance
- Acceptance
- Treatment and Sampling
- Storage, Bagging and Transfer

The process maps include the key tasks, decisions, check points and actions that will be carried out in operation of the permit.

Overlaid on the map is colour coding system that shows the emissions management techniques applied at each stage in the process.



This system clearly sets out:

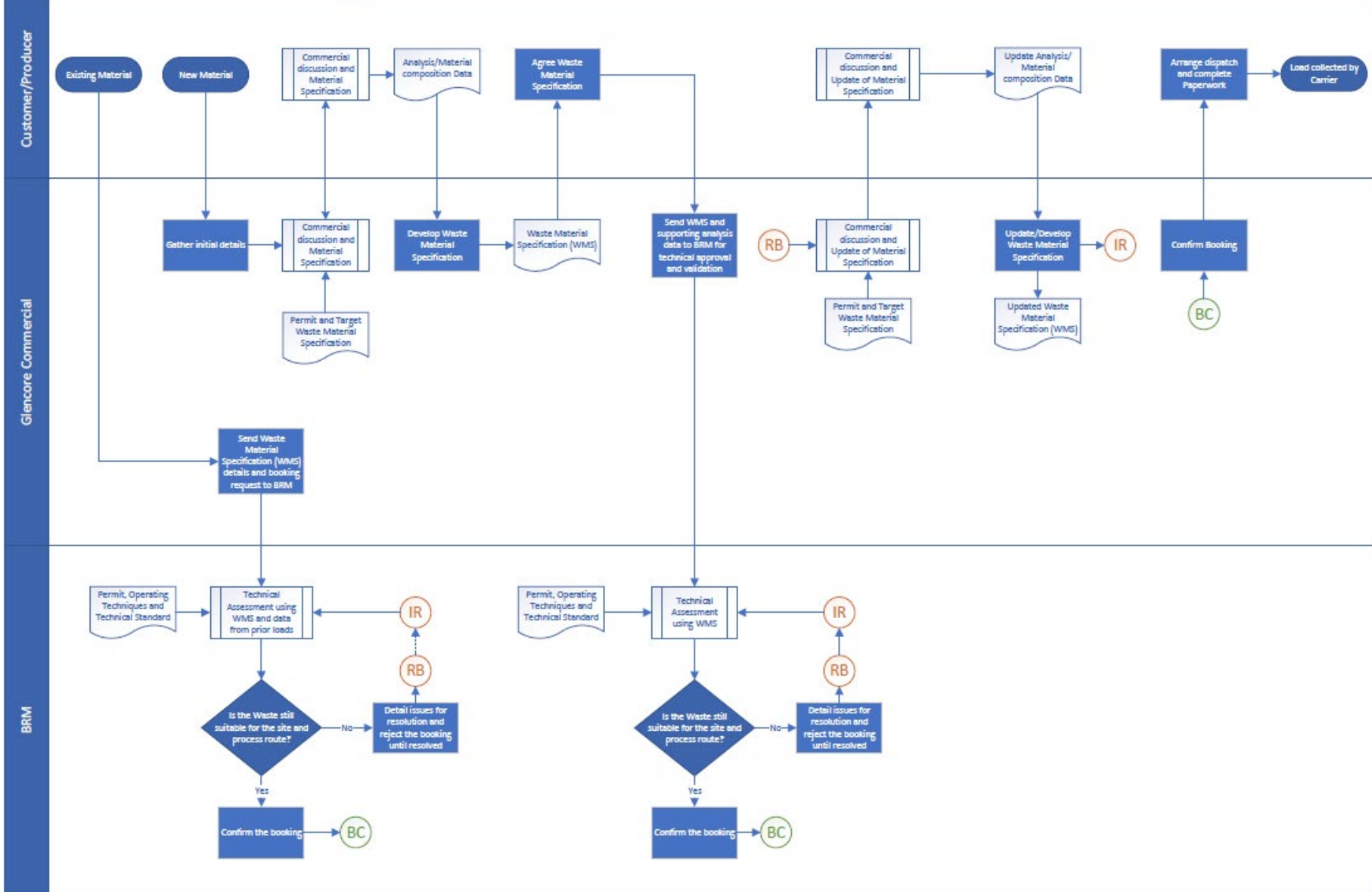
- The different waste management activities to be undertaken at the installation that will be regulated by the Environmental Permit
- How they are being carried out in a stepwise manner.
- Who is responsible for doing the tasks (via the Swimlane).
- The control measures that are used to minimise environmental risks and to control emissions.
- The check points to ensure compliance.

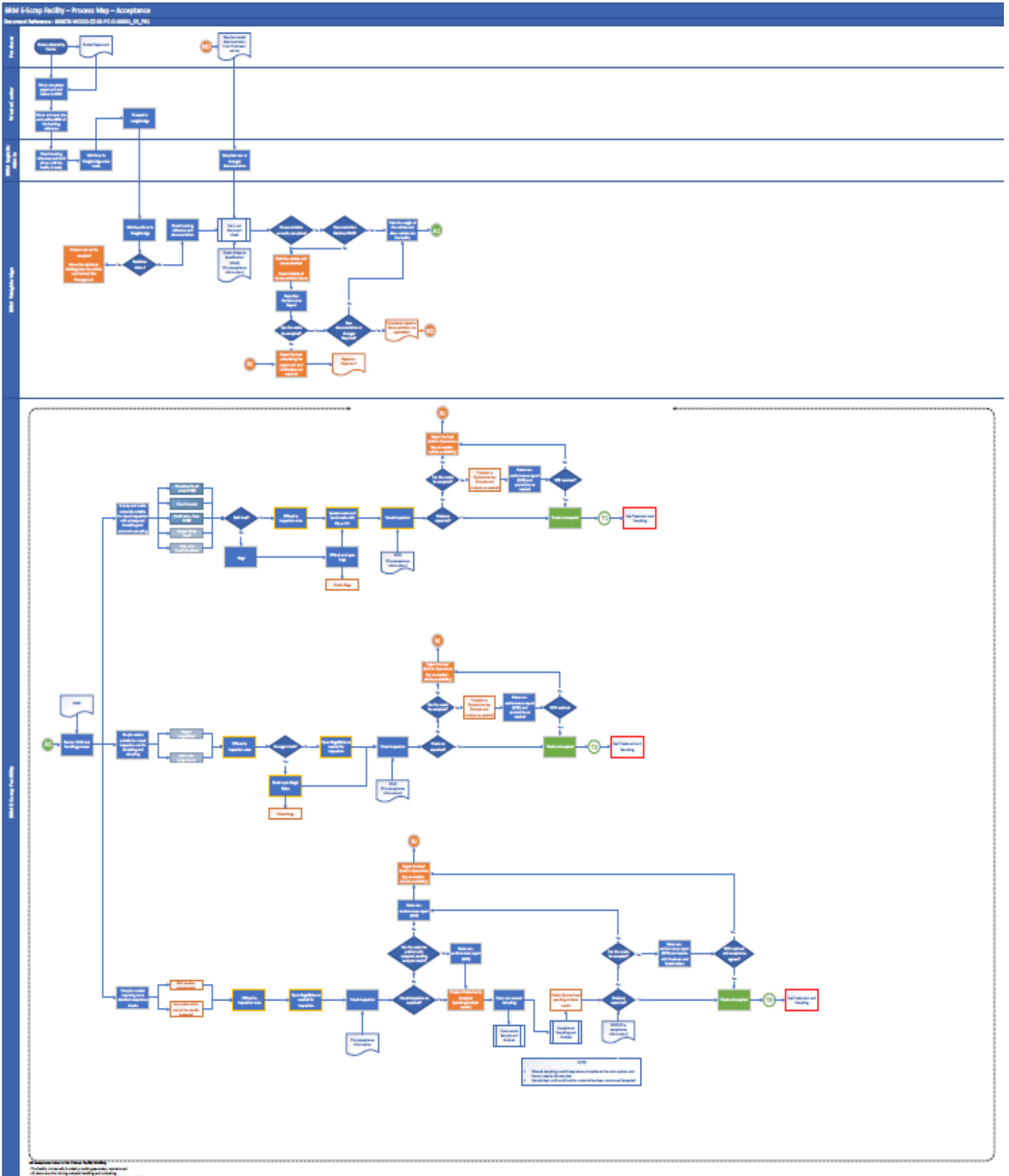


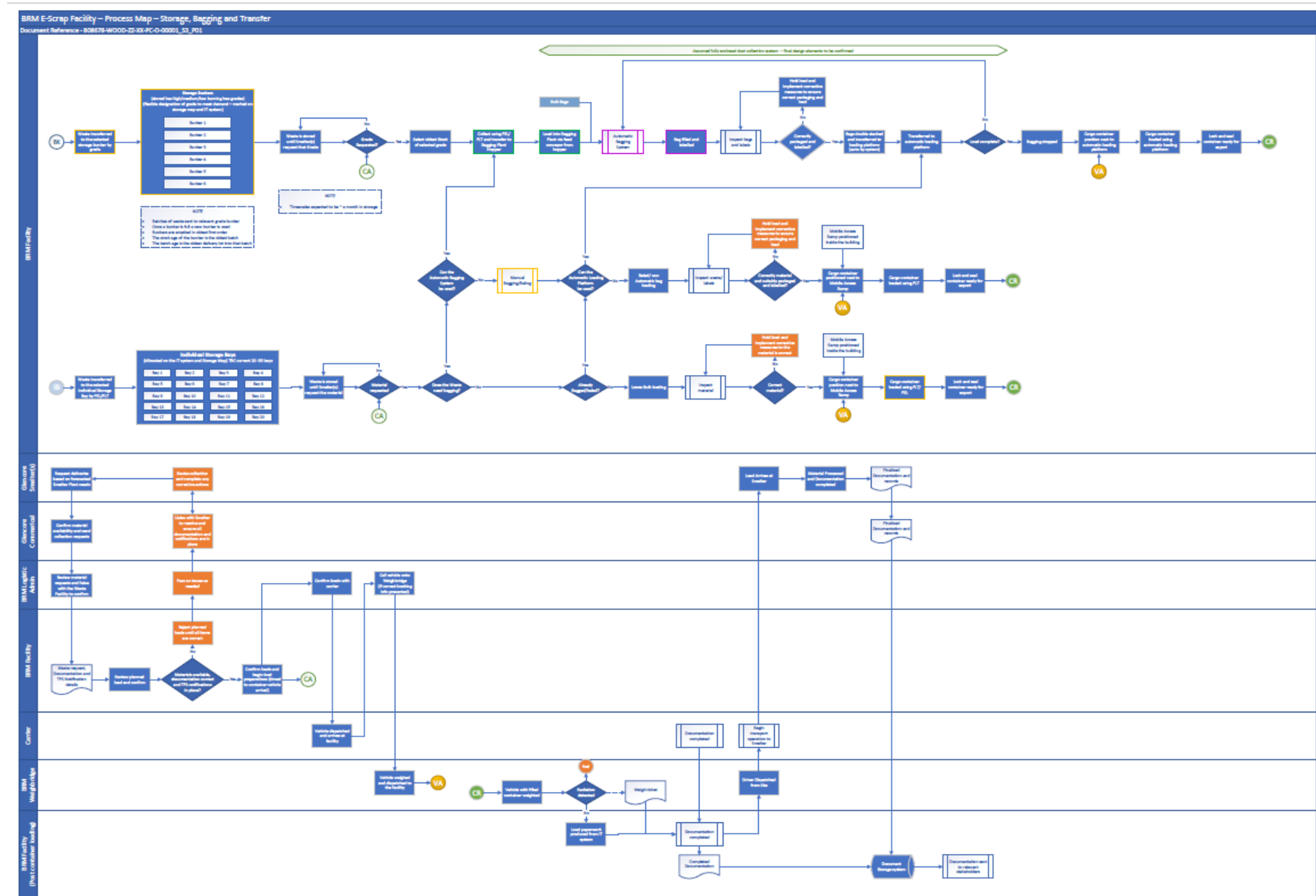
Appendix A Operating Techniques

BRM E-Scrap Facility – Process Map – Pre-acceptance


Document Reference - 808678-WOOD-ZZ-XX-PC-O-00001_S3_P01







Issued by

 5/4/23

..... James Burke

Approved by

LA Gray

..... Lesley Gray

Copyright and non-disclosure notice

The contents and layout of this report are subject to copyright owned by WSP (© WSP Environment & Infrastructure Solutions UK Limited 2023) save to the extent that copyright has been legally assigned by us to another party or is used by WSP under licence. To the extent that we own the copyright in this report, it may not be copied or used without our prior written agreement for any purpose other than the purpose indicated in this report. The methodology (if any) contained in this report is provided to you in confidence and must not be disclosed or copied to third parties without the prior written agreement of WSP. Disclosure of that information may constitute an actionable breach of confidence or may otherwise prejudice our commercial interests. Any third party who obtains access to this report by any means will, in any event, be subject to the Third Party Disclaimer set out below.

Third party disclaimer

Any disclosure of this report to a third party is subject to this disclaimer. The report was prepared by WSP at the instruction of, and for use by, our client named on the front of the report. It does not in any way constitute advice to any third party who is able to access it by any means. WSP excludes to the fullest extent lawfully permitted all liability whatsoever for any loss or damage howsoever arising from reliance on the contents of this report. We do not however exclude our liability (if any) for personal injury or death resulting from our negligence, for fraud or any other matter in relation to which we cannot legally exclude liability.

Management systems

This document has been produced by WSP Environment & Infrastructure Solutions UK Limited in full compliance with our management systems, which have been certified to ISO 9001, ISO 14001 and ISO 45001 by Lloyd's Register.

Document revisions

No.	Details	Date
01	Operating Techniques	05/04/2023