

Legend

- Stack locations
- Site boundary plus
- Site boundary
- Modelling domain
- Surface roughness file extent

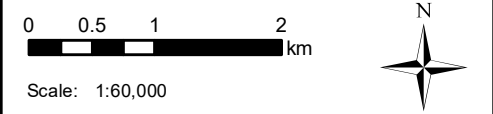
Surface roughness (Corine Land Cover (m))

- Broad-leaved forest (0.75)
- Coniferous forest (0.75)
- Construction sites (0.5)
- Discontinuous urban fabric (0.5)
- Green urban areas (0.6)
- Industrial or commercial units (0.5)
- Inland marshes (0.03)
- Land principally occupied by agriculture, with significant areas of natural vegetation (0.3)
- Mixed forest (0.75)
- Non-irrigated arable land (0.05)
- Pastures (0.03)
- Road and rail networks and associated land (0.075)
- Sport and leisure facilities (0.5)
- Transitional woodland-shrub (0.6)
- Water bodies (0.0001)

Client:	Lostock Sustainable Energy Plant Ltd
Site:	LSEP
Project:	3291
Title:	

Figure 3 - Surface roughness file

Drawn by: HKL	Date: 28/07/2021
© Crown copyright database right 2020	



FICHTNER
Consulting Engineers Limited

Kingsgate, Wellington Road North,
Stockport, Cheshire, SK4 1LW
Tel: 0161 476 0032
Fax: 0161 474 0618