


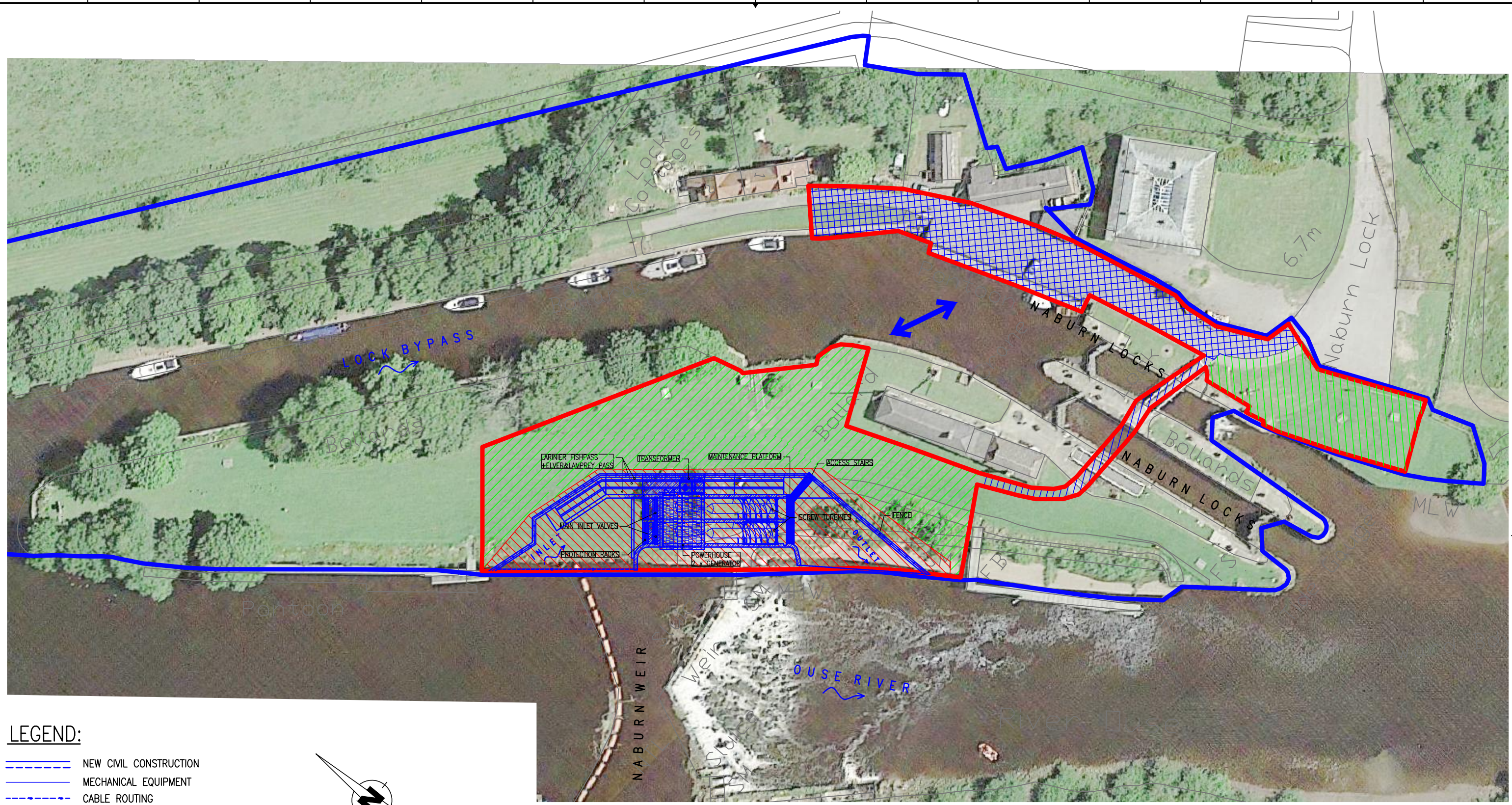


REVISION	REMARK
A	DEVELOPMENT BOUNDARY LINE ADJUSTMENT.
B	SCHEME MODIFICATION – 2 x SCREW TURBINE









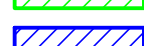


DRAWN BY	T. GOMBOŠ	PROJECT MANAGER	J. VALÁŠEK	
CHECKED BY	M. ŠTRONER	SITE	NABURN	
APPROVED BY	J. VALÁŠEK	COUNTRY	UNITED KINGDOM	
CLIENT ...	H2O POWER GENERATION LTD.	ALTITUDE SYSTEM	OSGB36/ODN	
PROJECT		HEP NABURN		
PART	OUTLINE DESIGN		DATE	08/2018
DRAWING NAME	ARTIST IMPRESSION		SHEETS	2 x A4
			SCALE	-
			ARCHIVE No.	2350008B

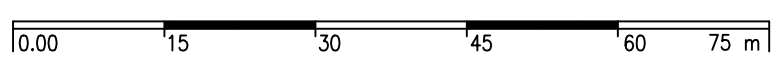


HYDROPOL
Project & Management s.s.
Všeřdova 560/2, 118 00 PRAHA
CZECH REPUBLIC
www.hydropol.cz



LEGEND:


-  NEW CIVIL CONSTRUCTION
-  MECHANICAL EQUIPMENT
-  CABLE ROUTING
-  DEVELOPMENT BOUNDARY
-  CRT LAND
-  OS MASTER MAP
-  LAND FOR PROJECT – PERMANENT OCCUPATION
-  CONSTRUCTION SITE – TEMPORARY OCCUPATION & SITE FACILITY AREA
-  FOOT & LIGHT MACHINERY ACCESS
-  TRANSPORTATION/HEAVY MACHINERY ACCESS
-  ACCESS BY BARGE



REVISION	REMARK
A	DEVELOPMENT BOUNDARY LINE ADJUSTMENT.
B	SCHEME MODIFICATION – 2 x SCREW TURBINE

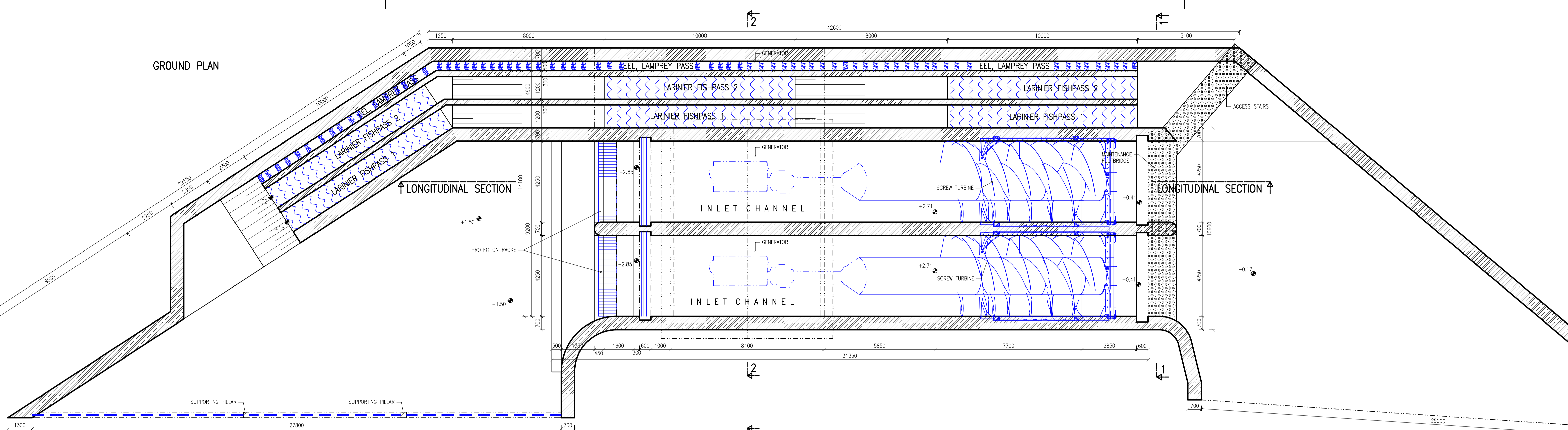
DRAWN BY	T. GOMBOŠ	PROJECT MANAGER	J. VALÁŠEK
CHECKED BY	M. ŠTRONER	SITE	NABURN
APPROVED BY	J. VALÁŠEK	COUNTRY	UNITED KINGDOM
CLIENT	H2O POWER GENERATION LTD.	ALTITUDE SYSTEM	OSGB36/ODN
PROJECT		HEP NABURN	
PART		OUTLINE DESIGN	
DRAWING NAME		SITE LAYOUT PLAN – AERIAL PHOTO	

DATE	08/2018
SHEETS	2 x A4
SCALE	1:750
ARCHIVE No.	2350004B



HYDROPOL Project & Management a.s.
 Všeřdova 560/2, 118 00 PRAHA
 CZECH REPUBLIC
www.hydropol.cz

GROUND PLAN



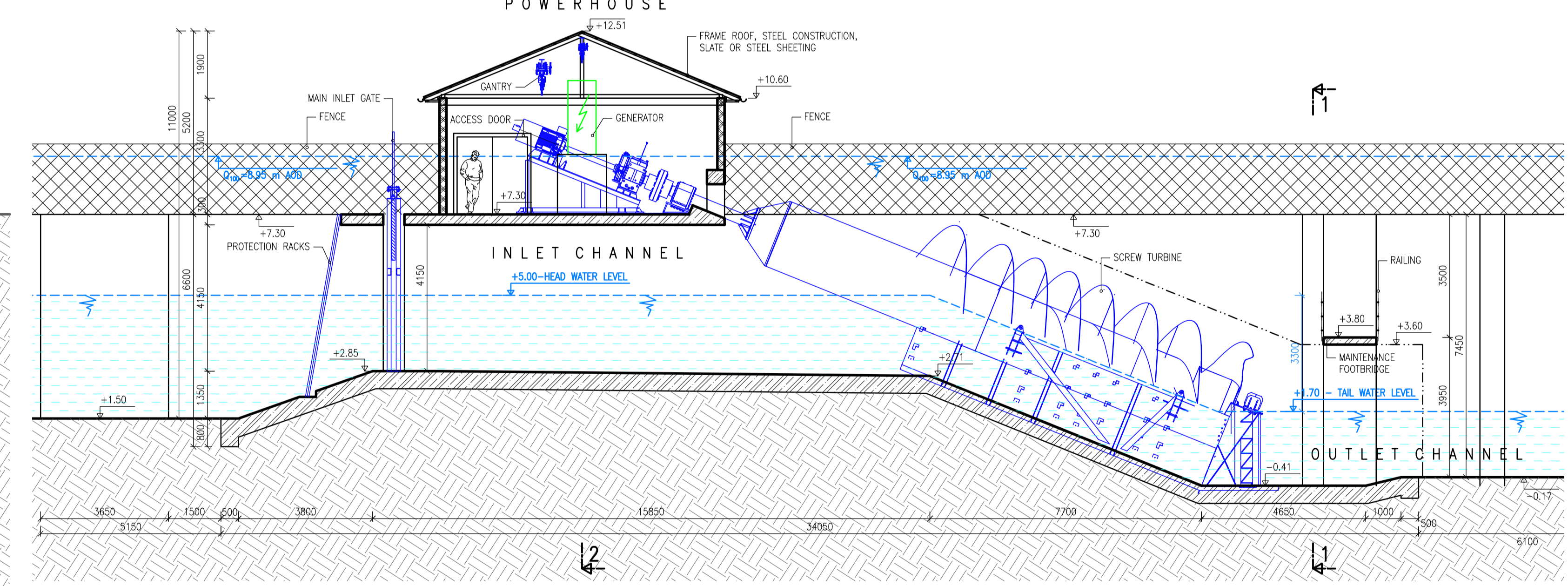
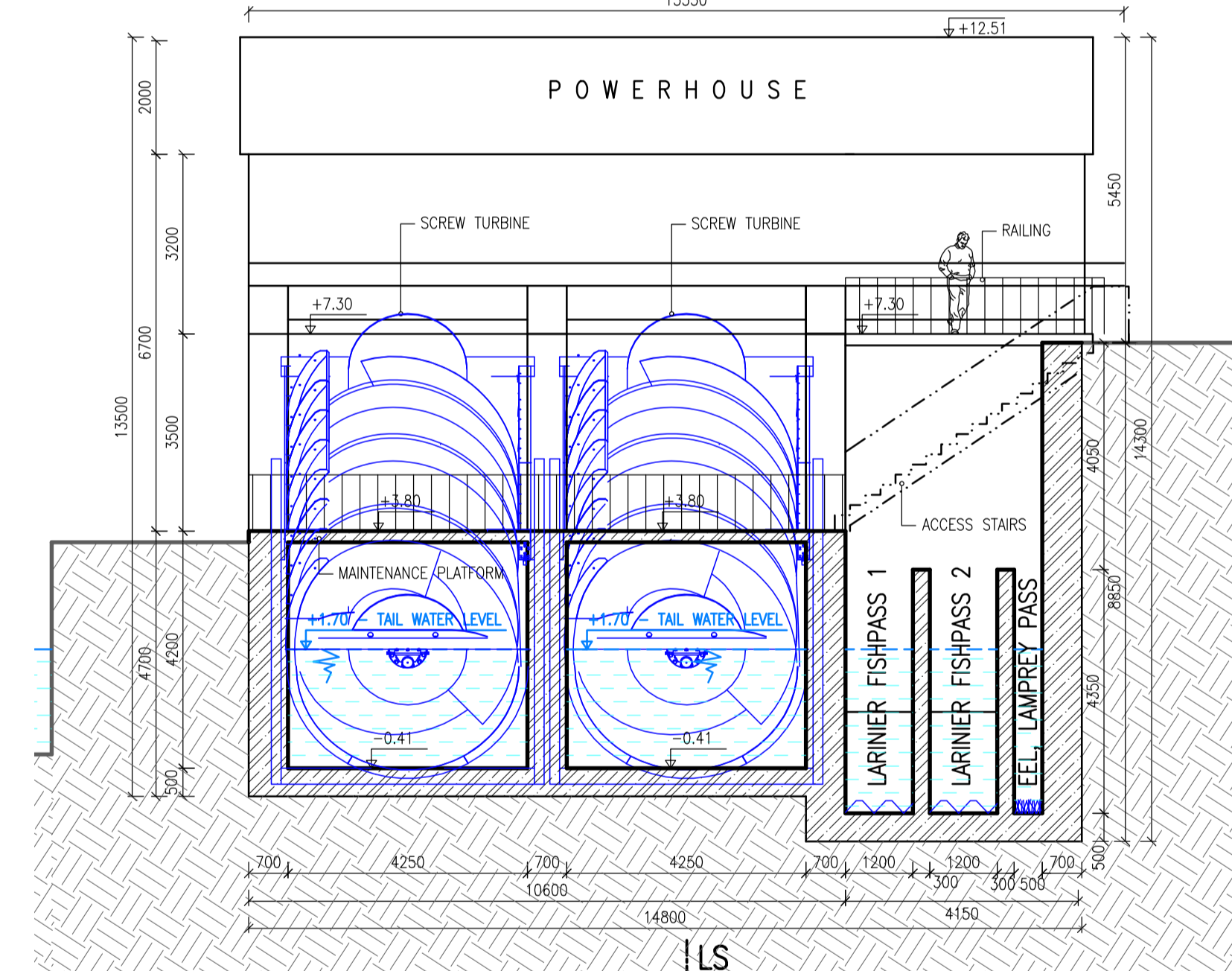
LONGITUDINAL SECTION

LONGITUDINAL SECTION

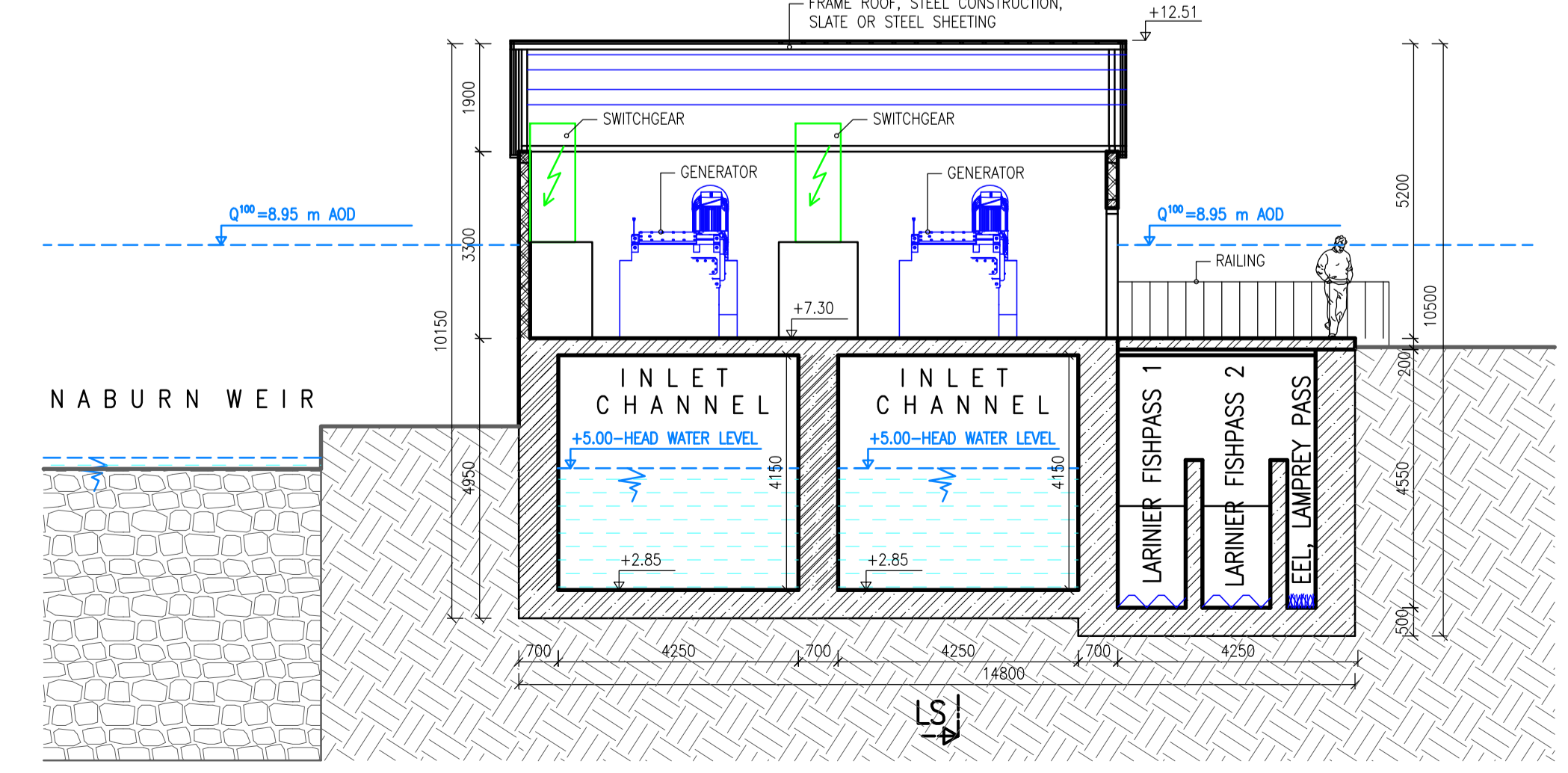
SECTION 1-1

LONGITUDINAL SECTION

POWERHOUSE



SECTION 2-2



LEGEND:

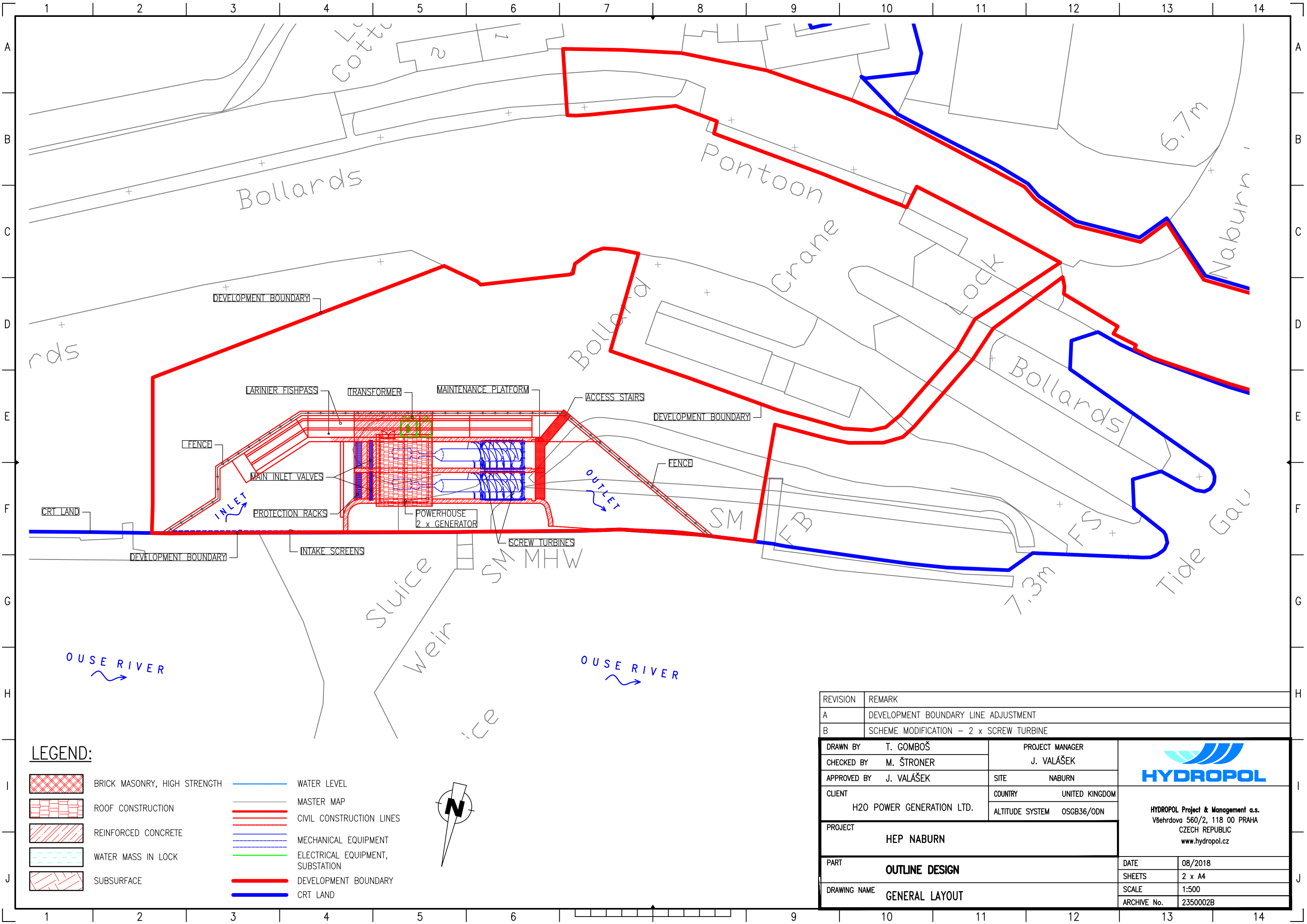
	BRICK MASONRY, HIGH STRENGTH		WATER LEVEL
	WEIR CONSTRUCTION INDICATION		EXISTING CONSTRUCTIONS
	REINFORCED CONCRETE		CIVIL CONSTRUCTION LINES
	WATER MASS IN LOCK		MECHANICAL PART
	SUBSURFACE		ELECTRICAL PART

REVISION	REMARK
A	DEVELOPMENT BOUNDARY LINE ADJUSTMENT
B	SCHEME MODIFICATION - 2 x SCREW TURBINE

DRAWN BY	T. GOMBOS	PROJECT MANAGER	J. VALÁSEK
CHECKED BY	M. ŠTRONER	SITE	NABURN
APPROVED BY	J. VALÁSEK	COUNTRY	UNITED KINGDOM
CLIENT	H2O POWER GENERATION LTD.	ALTITUDE SYSTEM	OSGB36/ODN
PROJECT	HEP NABURN		
PART	OUTLINE DESIGN		
DRAWING NAME	GROUND PLAN & SECTIONS		
DATE	08/2018	SHEETS	8x4
SCALE	1:100	ARCHIVE No.	2350008B



HYDROPOL Project & Management s.r.o.
Větrná 560/2, 118 00 PRAHA
CZECH REPUBLIC
www.hydropol.cz



LEGEND:

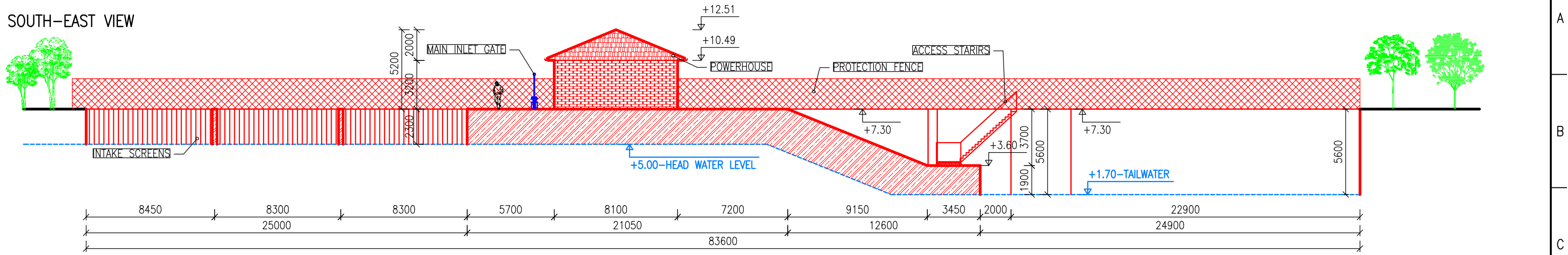
- | | | | |
|--|------------------------------|--|----------------------------------|
| | BRICK MASONRY, HIGH STRENGTH | | WATER LEVEL |
| | ROOF CONSTRUCTION | | MASTER MAP |
| | REINFORCED CONCRETE | | CIVIL CONSTRUCTION LINES |
| | WATER MASS IN LOCK | | MECHANICAL EQUIPMENT |
| | SUBSURFACE | | ELECTRICAL EQUIPMENT, SUBSTATION |
| | | | DEVELOPMENT BOUNDARY |
| | | | CRT LAND |



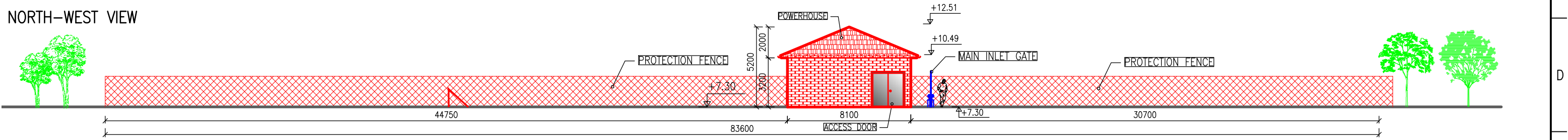
REVISION	REMARK	
A	DEVELOPMENT BOUNDARY LINE ADJUSTMENT	
B	SCHEME MODIFICATION - 2 x SCREW TURBINE	

DRAWN BY	T. GOMBOŠ	PROJECT MANAGER	J. VALÁŠEK	<p>HYDROPOL Project & Management a.s. Všeřdova 560/2, 118 00 PRAHA CZECH REPUBLIC www.hydropol.cz</p>	
CHECKED BY	M. ŠTRONER	SITE	NABURN		
APPROVED BY	J. VALÁŠEK	COUNTRY	UNITED KINGDOM		
CLIENT	H2O POWER GENERATION LTD.	ALTITUDE SYSTEM	OSGB36/ODN		
PROJECT	HEP NABURN				
PART	OUTLINE DESIGN			DATE	08/2018
DRAWING NAME	GENERAL LAYOUT			SHEETS	2 x A4
				SCALE	1:500
				ARCHIVE No.	2350002B

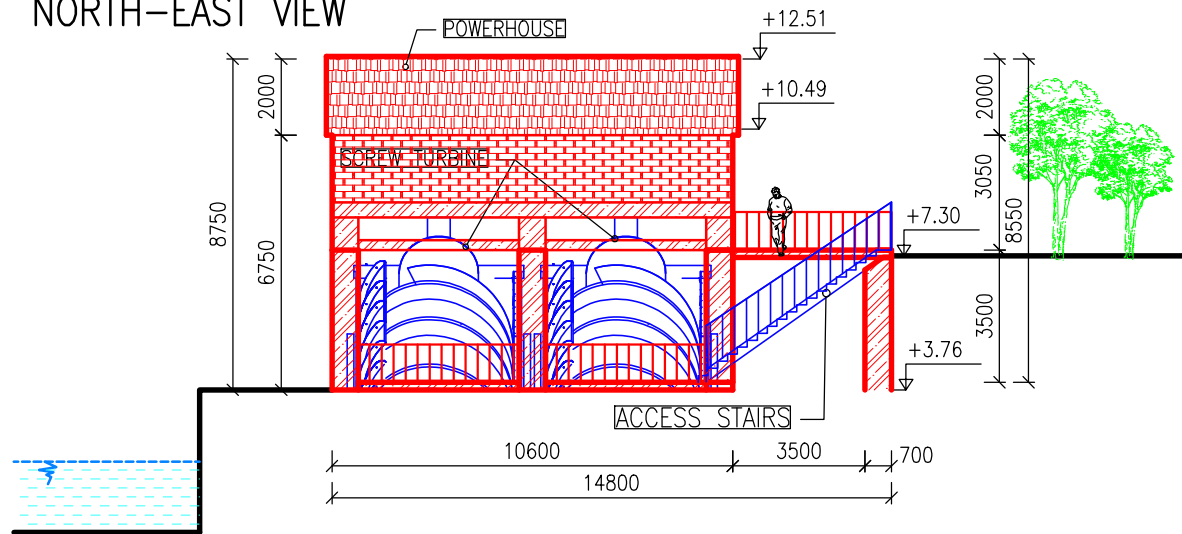
SOUTH-EAST VIEW



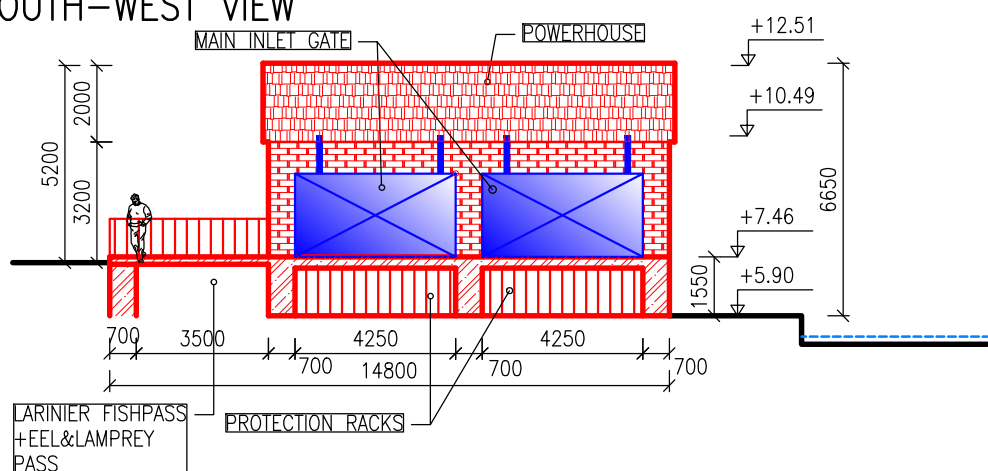
NORTH-WEST VIEW



NORTH-EAST VIEW



SOUTH-WEST VIEW



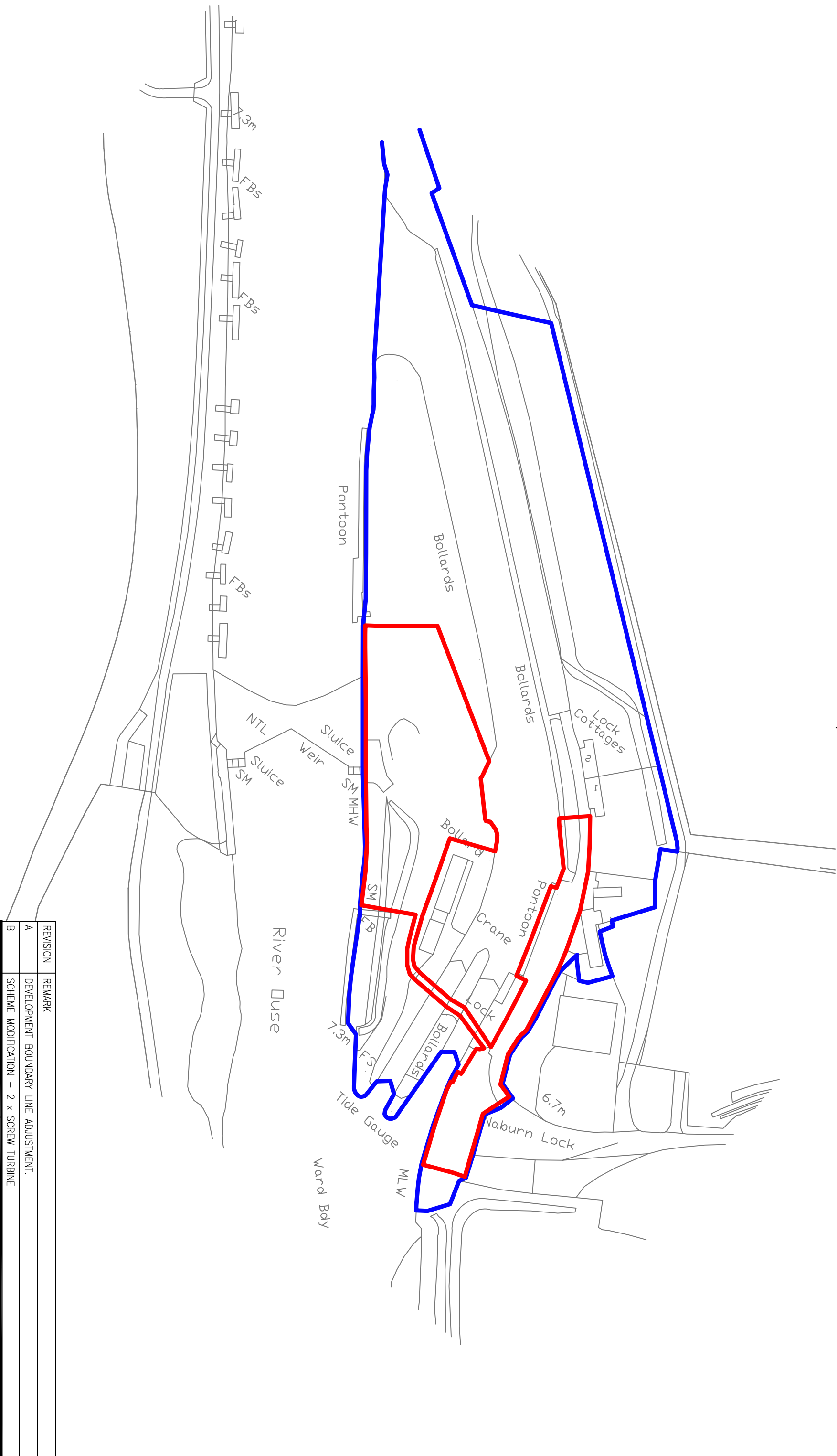
LEGEND:

- ROOF COVER
- SURFACE MASONRY, LONDON BRICK
- REINFORCED CONCRETE
- FENCE
- MECHANICAL EQUIPMENT
- EXISTING LOCK CONSTRUCTION
- NEW CIVIL CONSTRUCTION LINES
- TREES, INDICATIVE

CONSTRUCTION PART	
ROOF	STEEL OR WOODEN FRAME CONSTRUCTION + SLATE OR STEEL SHEETING OF ANTHRACITE GREY COLOR.
MAIN INLET GATE	STEEL CONSTRUCTION, ANTHRACITE GREY COLOR.
ACCESS DOOR	STEEL DOOR WITH EMERGENCY EXIT. ANTHRACITE GREY COLOR.
PROTECTION RACK	STEEL BARS, ANTHRACITE GREY COLOR.
RAILING	VERTICAL, ANTHRACITE GREY

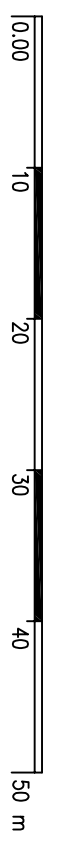
REVISION	REMARK
A	DEVELOPMENT BOUNDARY LINE ADJUSTMENT
B	SCHEME MODIFICATION - 2 x SCREW TURBINE

DRAWN BY	T. GOMBOŠ	PROJECT MANAGER	J. VALÁŠEK	<p>HYDROPOL Project & Management a.s. Všeřdova 560/2, 118 00 PRAHA CZECH REPUBLIC www.hydropol.cz</p>		
CHECKED BY	M. ŠTRONER	SITE	NABURN			
APPROVED BY	J. VALÁŠEK	COUNTRY	UNITED KINGDOM			
CLIENT	H2O POWER GENERATION LTD.	ALTITUDE SYSTEM	OSGB36/ODN			
PROJECT	HEP NABURN			DATE	08/2018	
PART	OUTLINE DESIGN			SHEETS	2 x A4	
DRAWING NAME	ELEVATIONS			SCALE	1:250	
					ARCHIVE No.	2350007B



LEGEND:

- DEVELOPMENT BOUNDARY
- CRT LAND

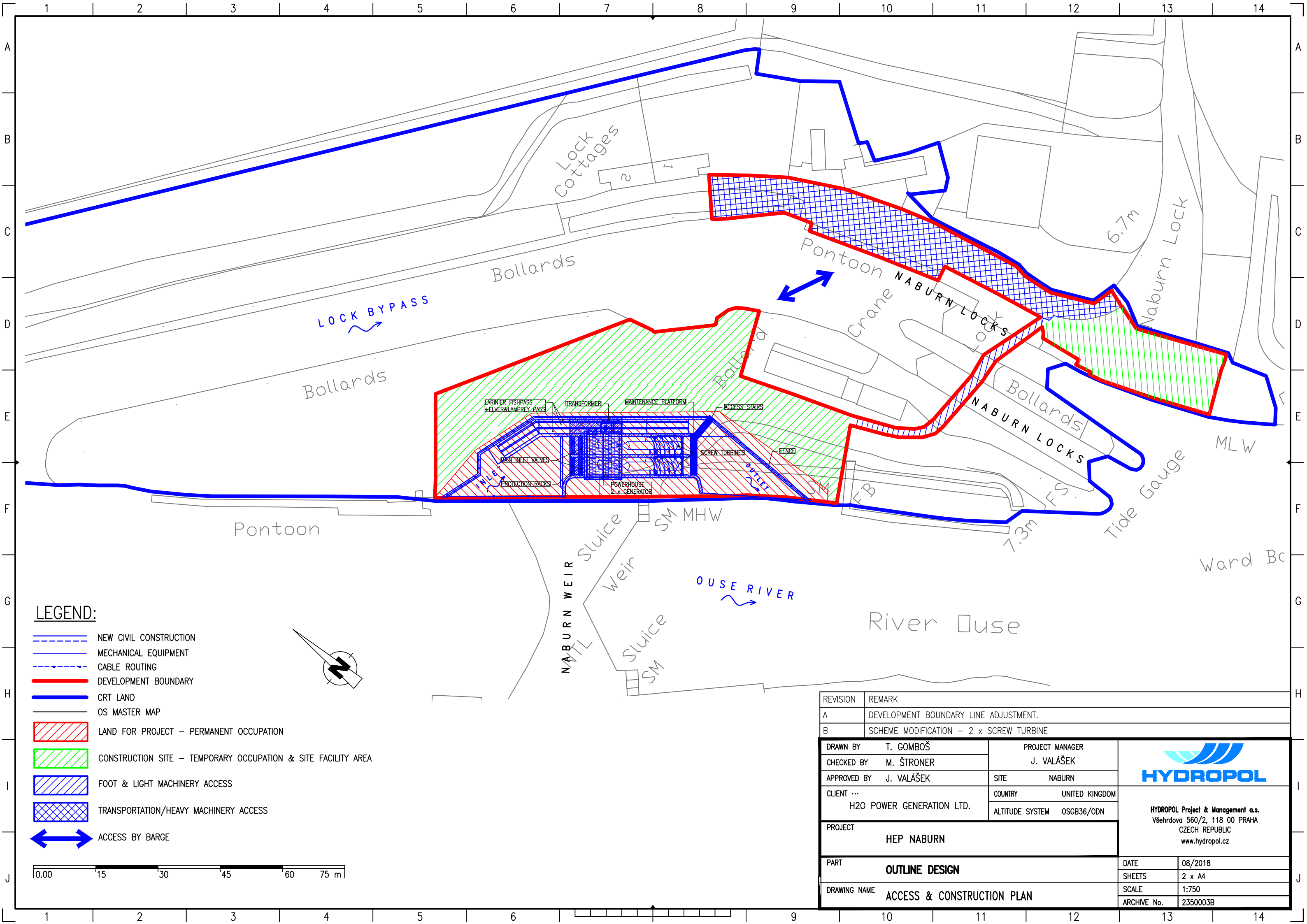


REVISION	REMARK
A	DEVELOPMENT BOUNDARY LINE ADJUSTMENT.
B	SCHEME MODIFICATION - 2 x SCREW TURBINE









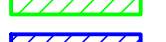


DRAWN BY	T. GOMBOŠ	PROJECT MANAGER	J. VALÁŠEK
CHECKED BY	M. ŠTRONER		
APPROVED BY	J. VALÁŠEK	SITE	NABURN
CLIENT	H2O POWER GENERATION LTD.	COUNTRY	UNITED KINGDOM
PROJECT	HEP NABURN	ALTITUDE SYSTEM	OSGB36/ODN

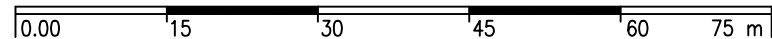
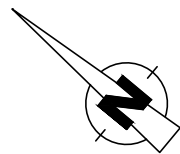
PART	OUTLINE DESIGN	DATE	08/2018
DRAWING NAME	DEVELOPMENT BOUNDARY PLAN	SHEETS	2 x A4
		SCALE	1:1250
		ARCHIVE No.	2350005B

HYDROPOL HYDROPOL Project & Management s.r.o. Všeňdova 560/2, 118 00 PRAHA CZECH REPUBLIC www.hydropol.cz	
---	--



LEGEND:

-  NEW CIVIL CONSTRUCTION
-  MECHANICAL EQUIPMENT
-  CABLE ROUTING
-  DEVELOPMENT BOUNDARY
-  CRT LAND
-  OS MASTER MAP
-  LAND FOR PROJECT – PERMANENT OCCUPATION
-  CONSTRUCTION SITE – TEMPORARY OCCUPATION & SITE FACILITY AREA
-  FOOT & LIGHT MACHINERY ACCESS
-  TRANSPORTATION/HEAVY MACHINERY ACCESS
-  ACCESS BY BARGE




REVISION	REMARK
A	DEVELOPMENT BOUNDARY LINE ADJUSTMENT.
B	SCHEME MODIFICATION – 2 x SCREW TURBINE

DRAWN BY	T. GOMBOŠ	PROJECT MANAGER	J. VALÁŠEK
CHECKED BY	M. ŠTRONER	SITE	NABURN
APPROVED BY	J. VALÁŠEK	COUNTRY	UNITED KINGDOM
CLIENT ...	H2O POWER GENERATION LTD.	ALTITUDE SYSTEM	OSGB36/ODN

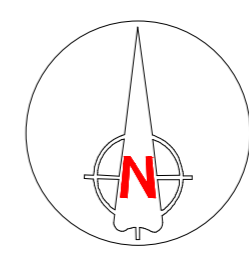
PROJECT	HEP NABURN	
PART	OUTLINE DESIGN	
DRAWING NAME	ACCESS & CONSTRUCTION PLAN	

DATE	08/2018
SHEETS	2 x A4
SCALE	1:750
ARCHIVE No.	2350003B



HYDROPOL

HYDROPOL Project & Management a.s.
 Všeřdova 560/2, 118 00 PRAHA
 CZECH REPUBLIC
www.hydropol.cz



Tree Categories

Trees are categorised in accordance with the cascade chart in Table 1 of the British Standard BS 5837:2012 'Trees in relation to design, demolition and construction - Recommendations'

Category 'U' - Trees in such condition that they cannot realistically be retained as living trees in context of the current land use for longer than 10 years.

Category 'A' - Trees of high quality with an estimated remaining life expectancy of at least 40 years.

Category 'B' - Trees of moderate quality with an estimated remaining life expectancy of at least 20 years.

Category 'C' - Trees of low quality with an estimated remaining life expectancy of at least 10 years, or young trees with a stem diameter below 150mm.

Root Protection Area

In order to avoid damage to the roots or rooting environment of retained trees, the Root Protection Areas (RPAs) should be plotted around each of the category A, B and C trees. This is a minimum area in m² which should be left undisturbed around each retained tree.

The RPA is calculated using the British Standard BS 5837:2012 'Trees in relation to design, demolition and construction - Recommendations'.

The calculated RPA is capped to 707m², which is the equivalent to a circle with a radius of 15m. Where there appears to be restrictions to root growth the root protection area is reshaped to more accurately reflect the likely distribution of the roots.

Protective Fencing

To be erected prior to the commencement of all works on site, and retained in place throughout construction.

Specification: To comprise of 2m tall welded mesh panels on rubber or concrete feet. Panels are to be joined together using a minimum of two anti-tamper couplers, installed so that they can only be removed from inside the fence. The panels should be supported on the inner side by stabiliser struts, which should be attached to a base plate and secured with ground pins.

All weather notices should be erected at regular intervals on the weld mesh panels with words such as "Construction exclusion zone - Keep out".

Tree Protection Area
KEEP OUT
Do not move this fence

(TOWN & COUNTRY PLANNING ACT 1990)
TREES ENCLOSED BY THIS FENCE ARE PROTECTED BY PLANNING CONDITIONS AND/OR ARE THE SUBJECT OF A TREE PRESERVATION ORDER. CONTRAVENTION OF A TREE PRESERVATION ORDER MAY LEAD TO CRIMINAL PROSECUTION.
ANY INCURSION INTO THE PROTECTED AREA MUST BE WITH THE WRITTEN PERMISSION OF THE LOCAL PLANNING AUTHORITY

ARBTECH

Tree Work Schedule

No.	Species	Works	Category
G1	Common ash	Fell to ground level; remove stump	B1
G2	Crack willow	Fell to ground level; remove stumps	C1
G3	Hawthorn	Fell to ground level; remove stumps	C1
G4	Hawthorn	Fell to ground level; remove stumps	C1
G5	Privet	Fell to ground level; remove stumps	C1

Arboricultural Supervision

The arboricultural consultant will be required to attend site to directly supervise all demolition and construction works that have to be undertaken within the root protection areas. This will include:

1. Pre-commencement site meeting & location of protective measures.
2. Any excavations within or adjacent to RPAs, including foundations, hard surfacing or underground services.

Arboricultural Method Statement

Please refer to Arbtch Consulting Ltd. Tree Schedule and Arboricultural Method Statement, for full details on all surveyed trees and how all aspects of the the development may be implemented without detriment to the retained trees.

Note: No unauthorised excavations are to be carried out within the RPAs of any retained trees. Any level changes must form part of a construction method statement & must protect the rooting environments of all retained trees.

Protective fencing

DEVELOPMENT BOUNDARY

PROTECTION RACKS

MAIN INLET VALVES

INTAKE SCREENS

POWERHOUSE
6 x GENERATOR

MAINTENANCE PLATFORM

SCREW TURBINES
6 x 10 m.s.

ACCESS STAIRS

DEVELOPMENT BOUNDARY

NTL

Sluice

SM

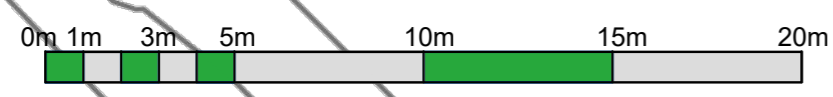
Sluice

Weir

SM

MHW

FB



ARBTECH

Unit 3, Well House Barns, Chester, CH4 0DH
www.arbtech.co.uk, email@arbtech.co.uk, 01244 661170

Project:
Naburn Weir,
The Walles Garden,
Naburn,
Yorkshire,
YO19 4RU

Client:
Renewables First

Drawing:
Tree Protection Plan

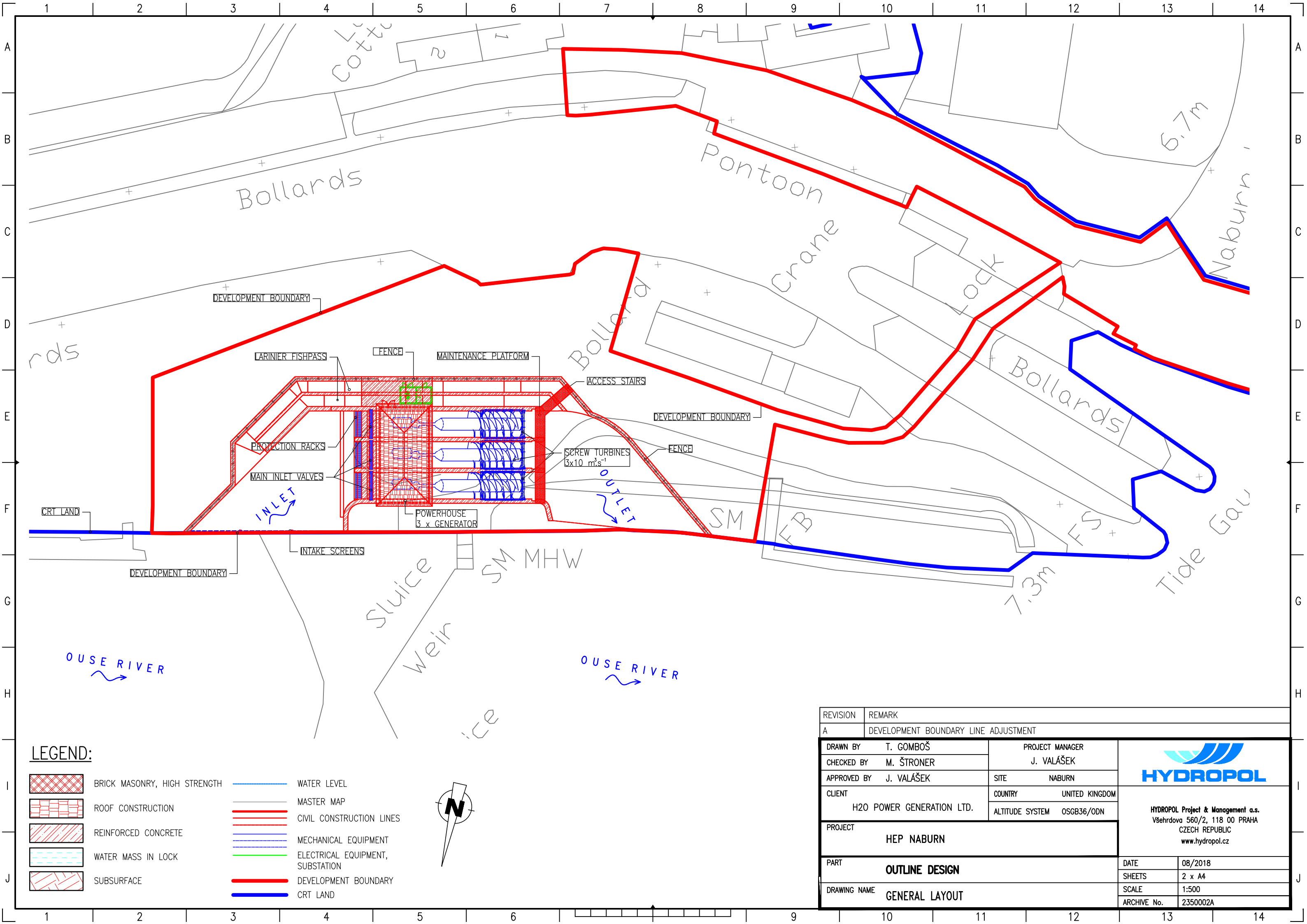
Based on:
2350002 - General Layout

Drawing No: Arbtech TPP 01

Date: Aug 2018 Scale: 1:200 @ A1 Drawn: AST

Tree Nos.:	2	Tree Canopies:	Trunks:	Category 'U' trees:	Category 'B' trees:
RPAs:					
Category 'C' trees:					
Location of removed tree:					
Protective fencing:					

All dimensions should be checked on site. No dimensions are to be scaled from this drawing. Please notify us of any discrepancies found. Arbtch Consulting Ltd. cannot be held responsible for inaccuracies in the field drawings in which this plan is based. This drawing is designed to reflect the principles of the layout or design only, and relates only to the protection of retained trees. Any structural or mechanical engineers should be consulted over any matters of construction, detailing or specification and for any standards or regulatory requirements relating to proposed structures, hard surfacing or underground services. This drawing was produced in colour - a monochrome copy should not be relied upon. © Arbtch Consulting Ltd. 2018



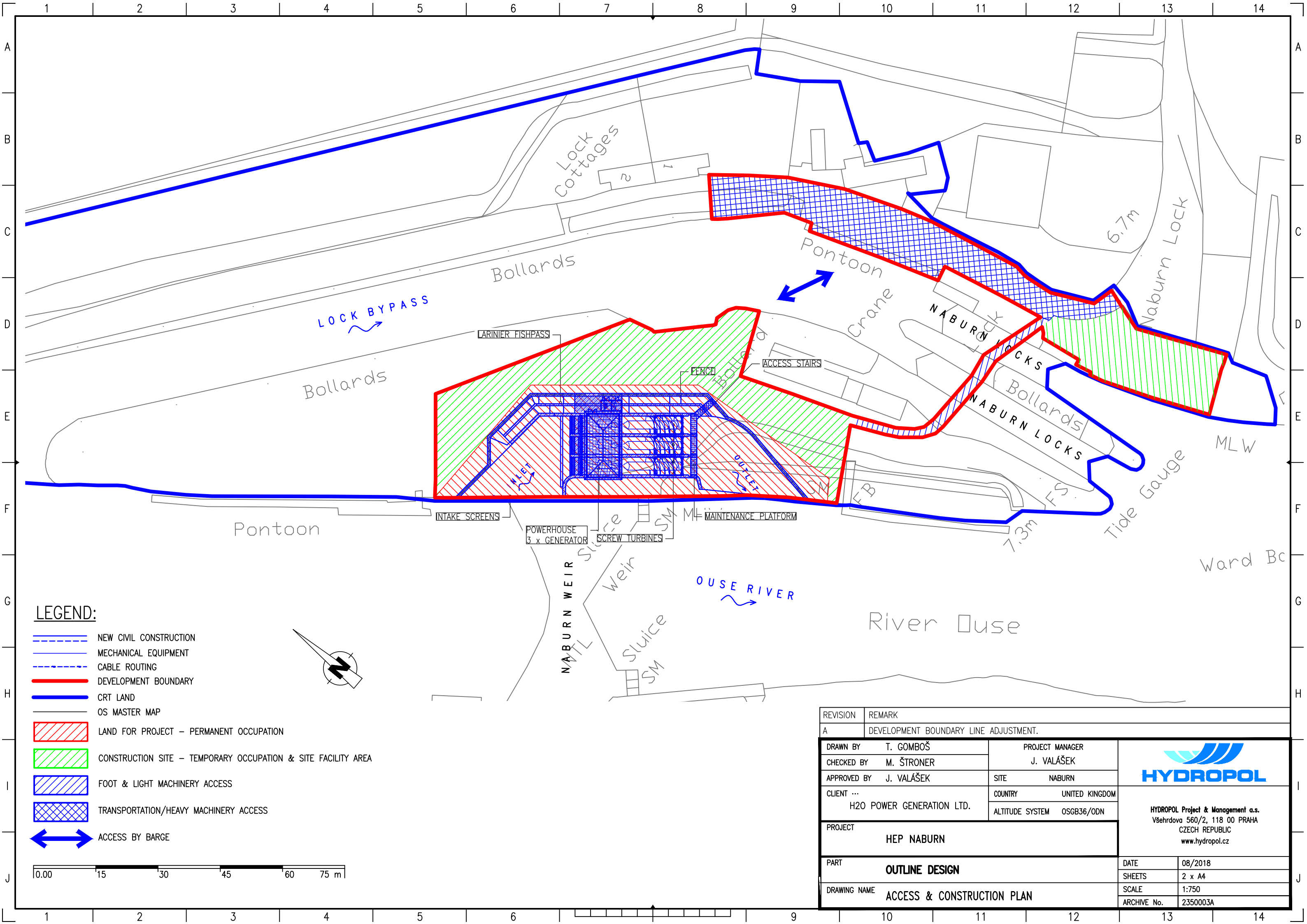
LEGEND:

- | | | | |
|--|------------------------------|--|----------------------------------|
| | BRICK MASONRY, HIGH STRENGTH | | WATER LEVEL |
| | ROOF CONSTRUCTION | | MASTER MAP |
| | REINFORCED CONCRETE | | CIVIL CONSTRUCTION LINES |
| | WATER MASS IN LOCK | | MECHANICAL EQUIPMENT |
| | SUBSURFACE | | ELECTRICAL EQUIPMENT, SUBSTATION |
| | | | DEVELOPMENT BOUNDARY |
| | | | CRT LAND |



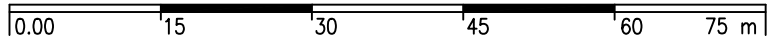
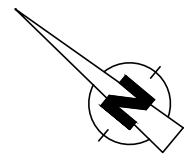
REVISION	REMARK		
A	DEVELOPMENT BOUNDARY LINE ADJUSTMENT		
DRAWN BY T. GOMBOŠ		PROJECT MANAGER J. VALÁŠEK	
CHECKED BY M. ŠTRONER		SITE NABURN	
APPROVED BY J. VALÁŠEK		COUNTRY UNITED KINGDOM	
CLIENT H2O POWER GENERATION LTD.		ALTITUDE SYSTEM OSGB36/ODN	
PROJECT HEP NABURN			
PART OUTLINE DESIGN			DATE 08/2018
DRAWING NAME GENERAL LAYOUT			SHEETS 2 x A4
			SCALE 1:500
			ARCHIVE No. 2350002A

HYDROPOL
 Project & Management a.s.
 Všeňdova 560/2, 118 00 PRAHA
 CZECH REPUBLIC
 www.hydropol.cz



LEGEND:

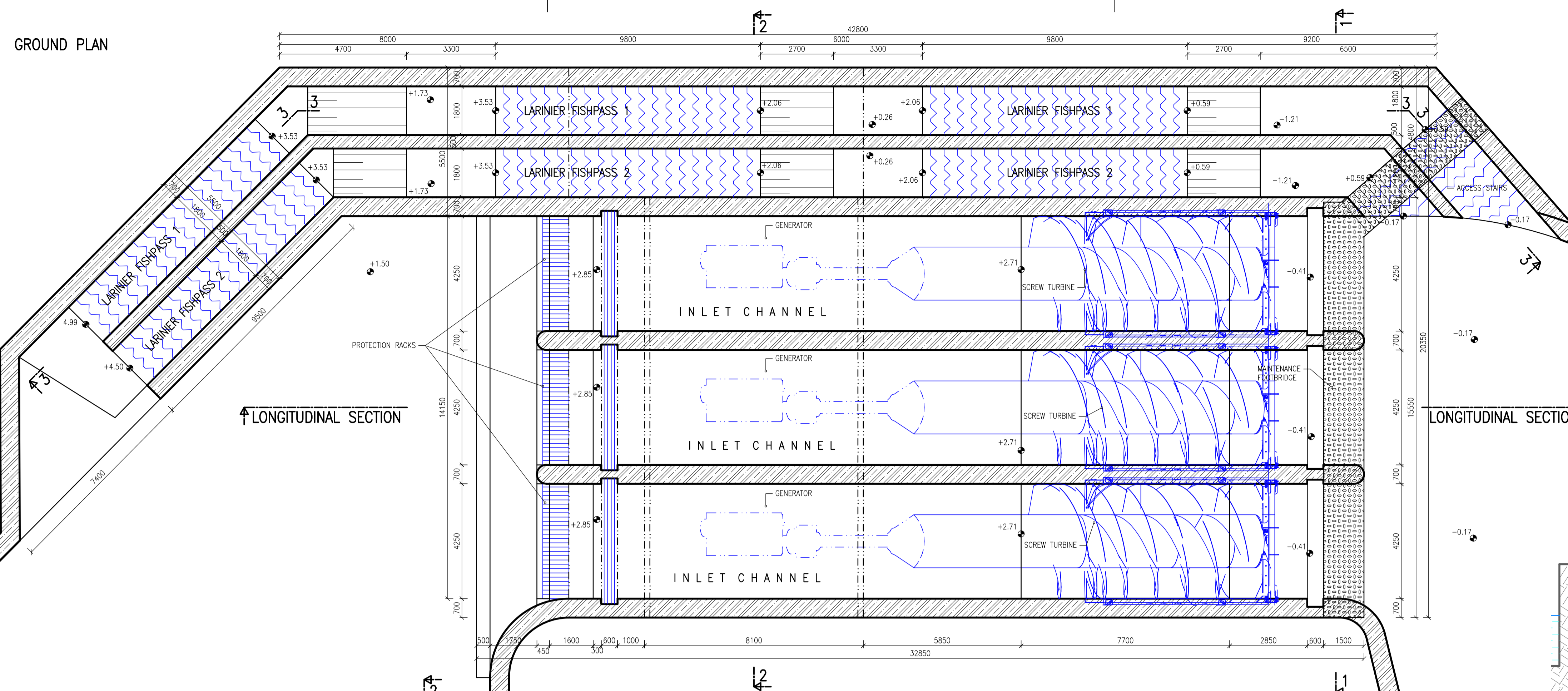
- NEW CIVIL CONSTRUCTION
- MECHANICAL EQUIPMENT
- CABLE ROUTING
- DEVELOPMENT BOUNDARY
- CRT LAND
- OS MASTER MAP
- LAND FOR PROJECT – PERMANENT OCCUPATION
- CONSTRUCTION SITE – TEMPORARY OCCUPATION & SITE FACILITY AREA
- FOOT & LIGHT MACHINERY ACCESS
- TRANSPORTATION/HEAVY MACHINERY ACCESS
- ACCESS BY BARGE



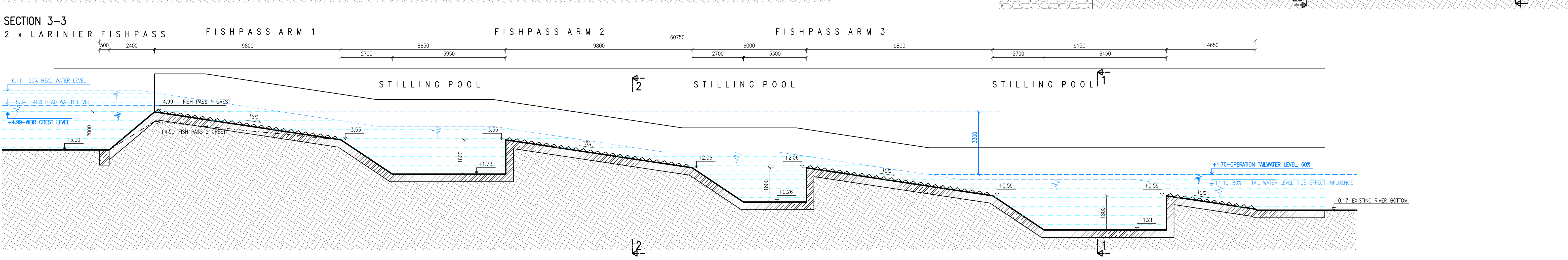
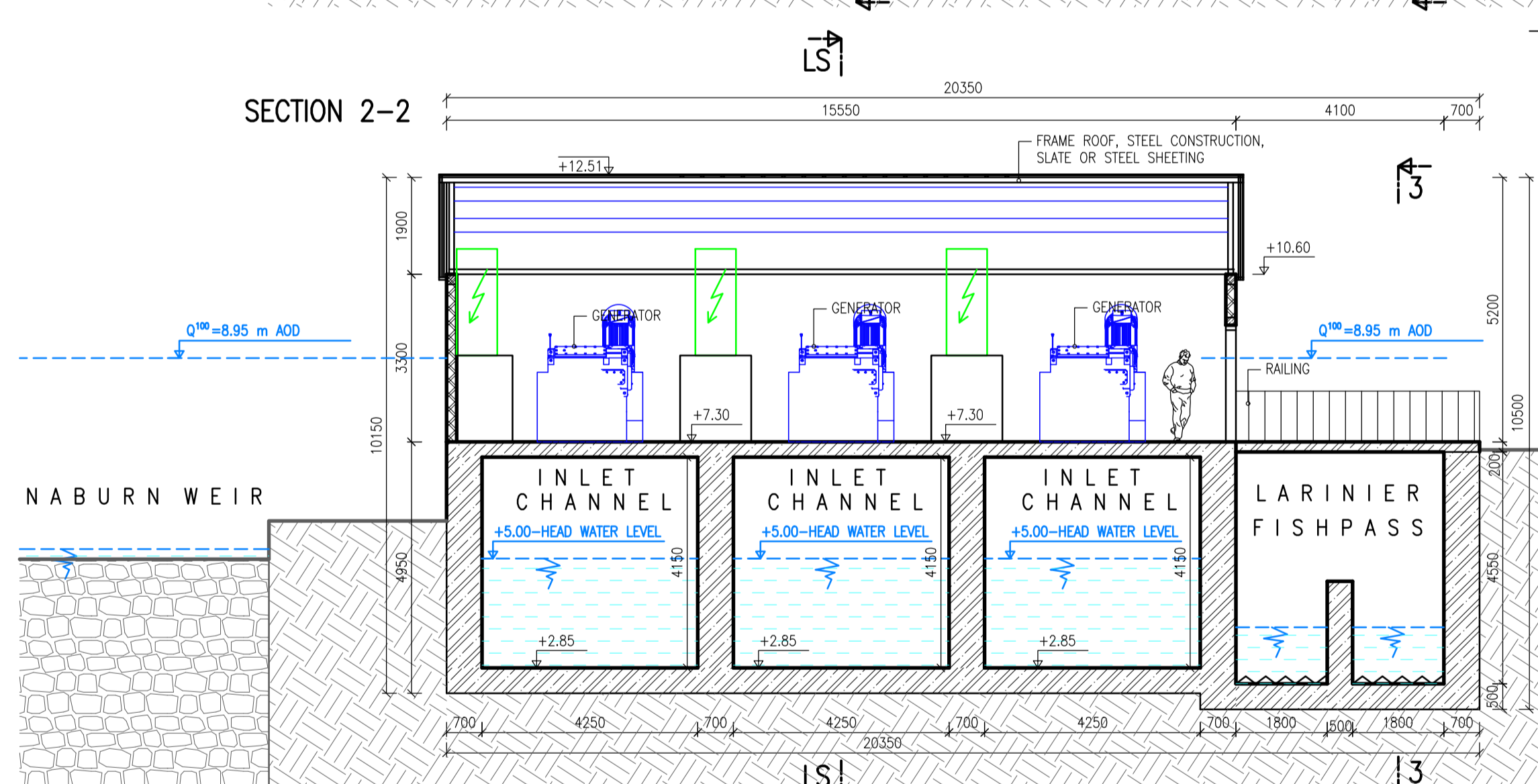
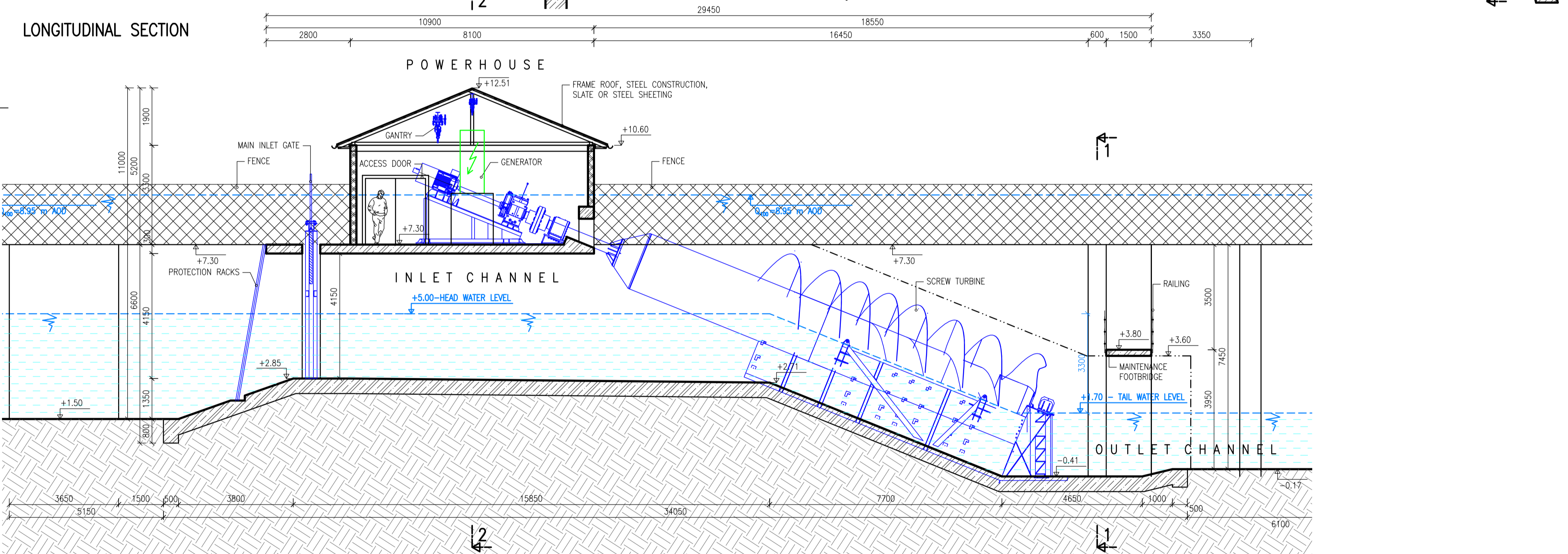
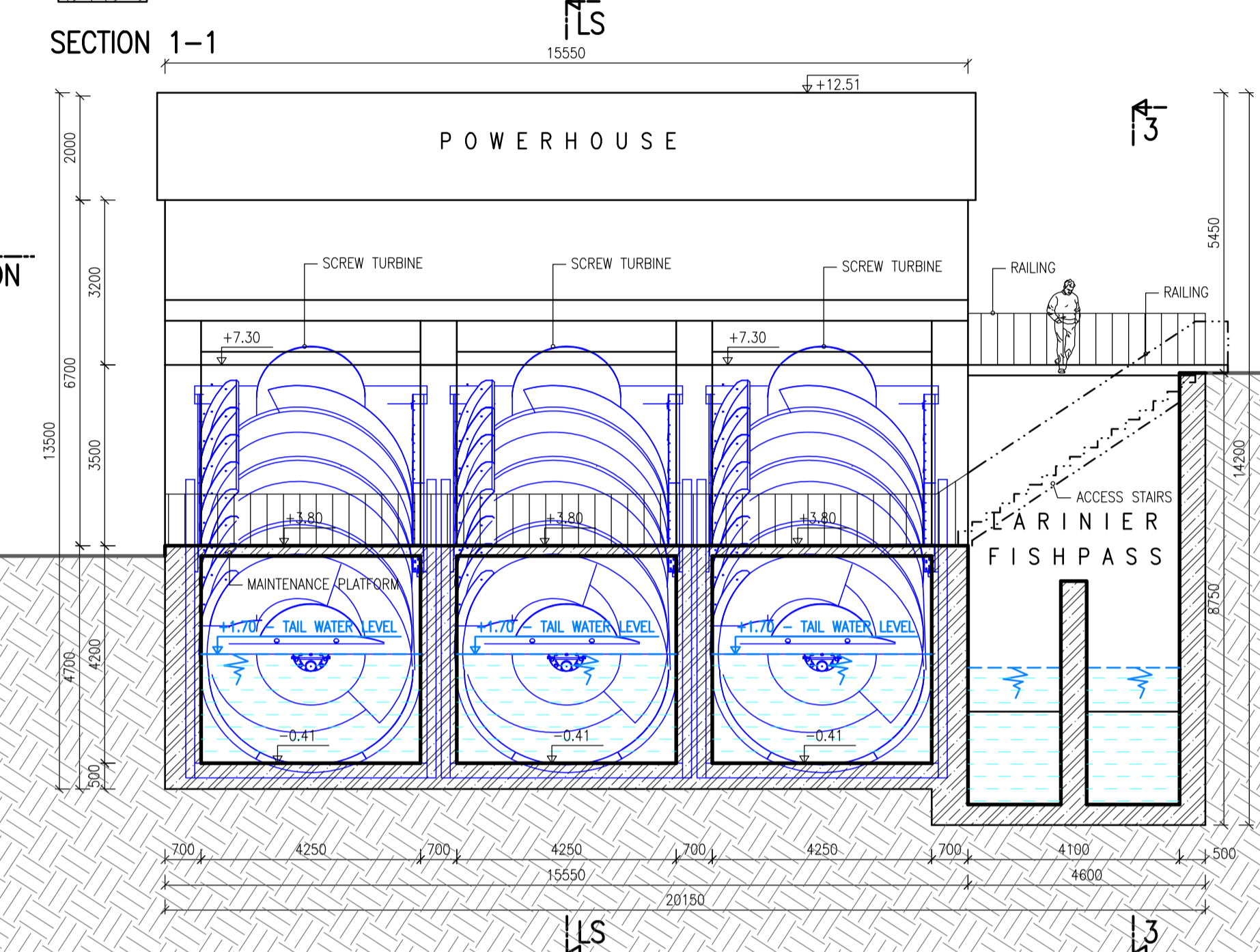
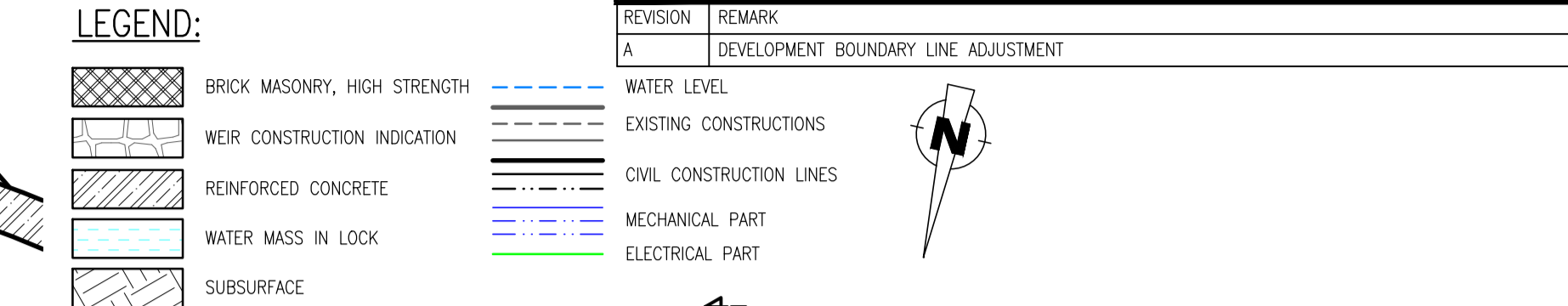
REVISION	REMARK			
A	DEVELOPMENT BOUNDARY LINE ADJUSTMENT.			
DRAWN BY	T. GOMBOŠ	PROJECT MANAGER	J. VALÁŠEK	
CHECKED BY	M. ŠTRONER	SITE	NABURN	
APPROVED BY	J. VALÁŠEK	COUNTRY	UNITED KINGDOM	
CLIENT ...	H2O POWER GENERATION LTD.	ALTITUDE SYSTEM	OSGB36/ODN	
PROJECT	HEP NABURN			
PART	OUTLINE DESIGN		DATE	08/2018
DRAWING NAME	ACCESS & CONSTRUCTION PLAN		SHEETS	2 x A4
			SCALE	1:750
			ARCHIVE No.	2350003A



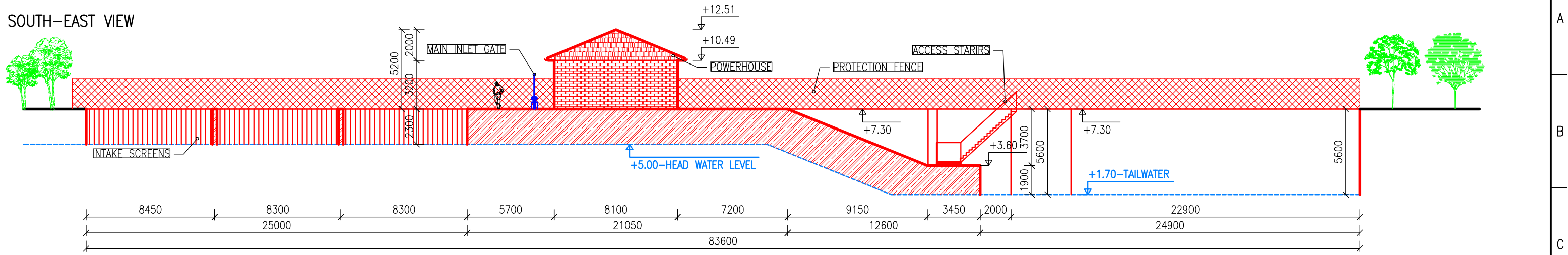
HYDROPOL Project & Management a.s.
 Všeřdova 560/2, 118 00 PRAHA
 CZECH REPUBLIC
 www.hydropol.cz



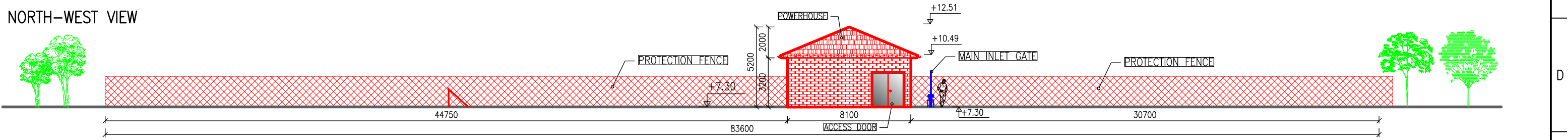
DRAWN BY: T. GOMBOS	PROJECT MANAGER: J. VALÁŠEK	
CHECKED BY: M. ŠTRONER	SITE: NABURN	
APPROVED BY: J. VALÁŠEK	COUNTRY: UNITED KINGDOM	HYDROPOL Project & Management s.r.o.
CLIENT: H2O POWER GENERATION LTD.	ALTIITUDE SYSTEM: OSGB36/ODN	Větrčovice 560/2, 118 00 PRAHA
PROJECT: HEP NABURN		www.hydropol.cz
PART: OUTLINE DESIGN		DATE: 08/2018
DRAWING NAME: GROUND PLAN & SECTIONS		SHEETS: 8x4
REVISION: A		SCALE: 1:100
REMARK: DEVELOPMENT BOUNDARY LINE ADJUSTMENT		ARCHIVE No.: 2350006A



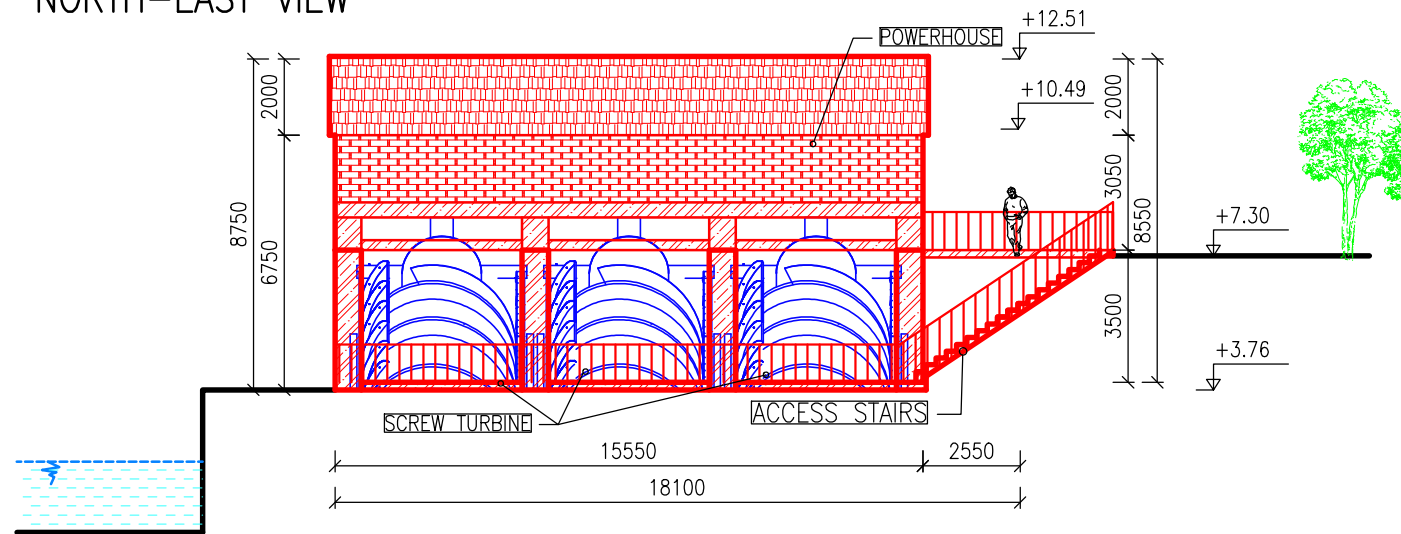
SOUTH-EAST VIEW



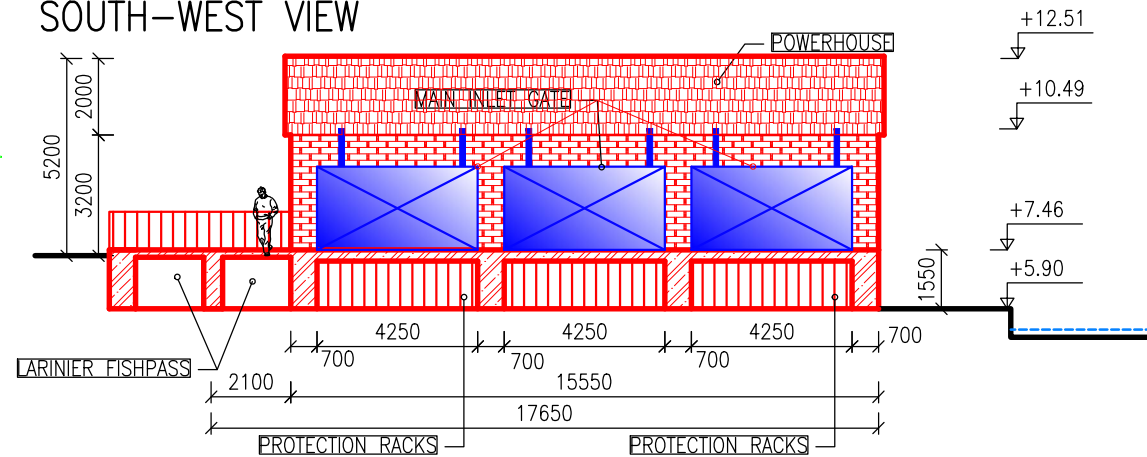
NORTH-WEST VIEW



NORTH-EAST VIEW



SOUTH-WEST VIEW



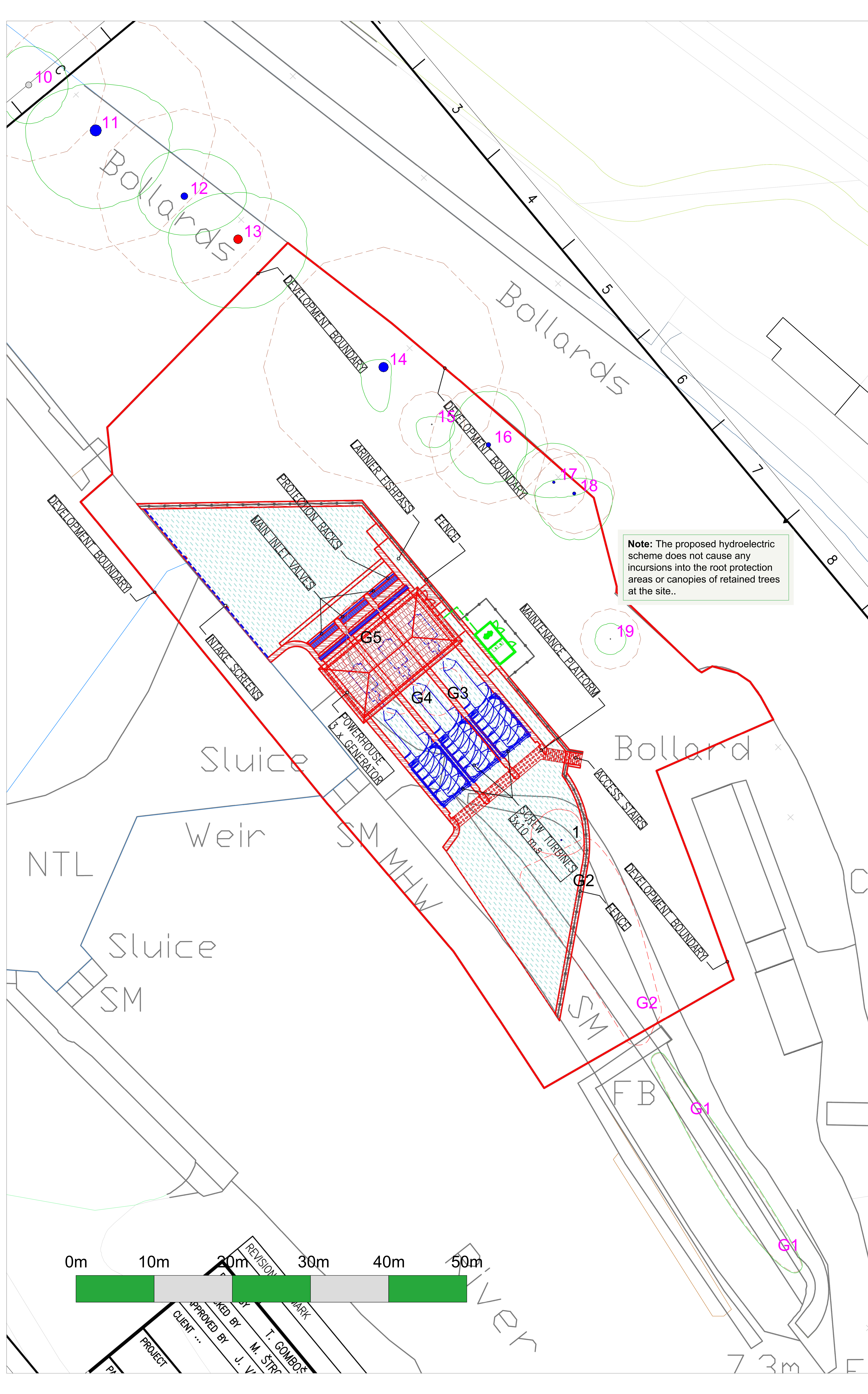
LEGEND:

- ROOF COVER
- SURFACE MASONRY, LONDON BRICK
- REINFORCED CONCRETE
- FENCE
- MECHANICAL EQUIPMENT
- EXISTING LOCK CONSTRUCTION
- NEW CIVIL CONSTRUCTION LINES
- TREES, INDICATIVE

CONSTRUCTION PART	
ROOF	STEEL OR WOODEN FRAME CONSTRUCTION + SLATE OR STEEL SHEETING OF ANTHRACITE GREY COLOR.
MAIN INLET GATE	STEEL CONSTRUCTION, ANTHRACITE GREY COLOR.
ACCESS DOOR	STEEL DOOR WITH EMERGENCY EXIT. ANTHRACITE GREY COLOR.
PROTECTION RACK	STEEL BARS, ANTHRACITE GREY.
RAILING	VERTICAL, ANTHRACITE GREY

REVISION	REMARK
A	DEVELOPMENT BOUNDARY LINE ADJUSTMENT

DRAWN BY	T. GOMBOŠ	PROJECT MANAGER	J. VALÁŠEK	<p>HYDROPOL Project & Management a.s. Všeřdova 560/2, 118 00 PRAHA CZECH REPUBLIC www.hydropol.cz</p>		
CHECKED BY	M. ŠTRONER	SITE	NABURN			
APPROVED BY	J. VALÁŠEK	COUNTRY	UNITED KINGDOM			
CLIENT	H2O POWER GENERATION LTD.	ALTITUDE SYSTEM	OSGB36/ODN			
PROJECT	HEP NABURN			DATE	08/2018	
PART	OUTLINE DESIGN			SHEETS	2 x A4	
DRAWING NAME	ELEVATIONS			SCALE	1:250	
					ARCHIVE No.	2350007A



Tree Categories

Trees are categorised in accordance with the cascade chart in Table 1 of the British Standard BS 5837:2012 'Trees in relation to design, demolition and construction - Recommendations'

Category 'U' - Trees in such condition that they cannot realistically be retained as living trees in context of the current land use for longer than 10 years.

Category 'A' - Trees of high quality with an estimated remaining life expectancy of at least 20 years.

Category 'B' - Trees of moderate quality with an estimated remaining life expectancy of at least 10 years.

Category 'C' - Trees of low quality with an estimated remaining life expectancy of at least 10 years, or young trees with a stem diameter below 50mm.

Root Protection Area

In order to avoid damage to the roots or rooting environment of retained trees, the Root Protection Areas (RPAs) should be plotted around each of the category 'A' and 'C' trees. This is a minimum area in m² which should be left undisturbed around each retained tree.

The RPA is calculated using the British Standard BS 5837:2012 'Trees in relation to design, demolition and construction - Recommendations'. The calculated RPA is capped to 707m², which is the equivalent to a circle with a radius of 15m. Where there appears to be restrictions to root growth the root protection area is reshaped to more accurately reflect the likely distribution of the roots.

Arboricultural Impacts

Impacts	Nos. of trees
Trees to be removed	1
Groups to be removed	4
Trees with proposed incursions into RPAs	0
Groups with proposed incursions into RPAs	0
Trees that will require pruning	0
Groups that will require pruning	0

Tree Work Schedule

No.	Species	Works	Category
1	Common ash	Fell to ground level, remove stump	B
G2	Crack willow	Fell to ground level, remove stump	C
G3	Hawthorn	Fell to ground level, remove stump	C
G4	Hawthorn	Fell to ground level, remove stump	C
G5	Prunel	Fell to ground level, remove stump	C

All tree work is to be undertaken in accordance with British Standard BS 3998:2010 'Tree work - Recommendations'. All existing trees to be removed and the site is to be left as found. Care is to be taken of the ground around retained trees to make sure that it does not become compacted as a result of tree surgery operations. No equipment or vehicles such as timber lorries, tractors, excavators or cranes shall be parked or driven beneath the crowns of any retained trees, to prevent subsequent compaction and root death.

No. of individual trees to be removed

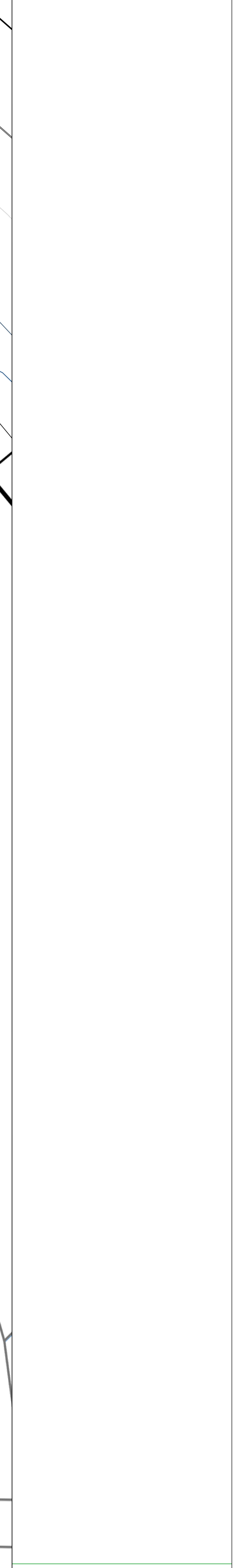
U	A	B	C
0	0	1	0

No. of groups to be removed

U	A	B	C
0	0	1	4

Arboricultural Method Statement

All tree work is to be undertaken in accordance with British Standard BS 3998:2010 'Tree work - Recommendations'. Please refer to Arboricultural Method Statement and Tree Protection Plan for full details of all surveyed trees and how all aspects of the development might be implemented without detriment to retained trees.



ARBTECH
 Unit 3, Well House Barrs, Chester, CH4 0DH
 www.arbtech.co.uk, email@arbtech.co.uk, 01244 661170

Project:
 Naburn Weir,
 The Wales Garden,
 Naburn,
 Yorkshire,
 YO19 4RU

Client:
 Renewables First

Drawing:
 Arboricultural Impact Assessment

Based on:
 2350002 - General Layout

Drawing No:
 Arbtech AIA 01

Date:
 Aug 2018

Scale:
 1:150 @ A0

Drawn:
 AST

Key:

Tree No.	2	Tree Canopies	Tree
RPAs	Category 'A' trees	Category 'B' trees	Category 'C' trees
Category 'U' trees	Trees to be removed		

Approved by: T. GOMBO
 Approved by: M. STRONG
 Approved by: J. V...
 Approved by: ...