



Non-Technical Summary



Helping clients prosper through compliance

SITE DETAILS

Stapletons Tyre Services Ltd,
Unit 13 Slyfield Industrial Estate,
Moorfield Road,
Guildford,
GU1 1RU

OPERATOR DETAILS

Murfitts Industries Limited,
Avenue One,
Letchworth Garden City,
SG6 2HU

APPLICATION REFERENCE

TBC

DOCUMENT REFERENCE

K18.17~09~001

ISSUE DATE

22/12/2023



Wiser Environment Ltd, Suite 11 Manor Mews, Bridge Street, St Ives, PE27 5UW
94 Xuan Thuy, Thao Dien Ward, District 2, Ho Chi Minh City, 713385
+44 1480 462 232 | www.wiserenvironment.co.uk | info@wisergroup.co.uk

DOCUMENT CONTROL

DOCUMENT TITLE:	Non-Technical Summary
REFERENCE:	K18.19~09~001
CLIENT:	Murfitts Industries Limited
REPORTED BY:	Wiser Environment Limited
STATUS:	FINAL
ISSUE:	1
ISSUE DATE:	22/12/2023
AUTHOR:	Wiser Environment Limited
APPROVED BY:	Magda Jackson (MIL)

REVISION HISTORY

REFERENCE	DATE	ISSUE:	REVISION SUMMARY
K18.19~09~001	21/12/2023	D1	Draft for client review.
K18.19~09~001	22/12/2023	1	For submission

QUALITY CONTROL

ACTION	DATE	NAME
Prepared	20/12/2023	Elliott Howard
Checked	22/12/2023	Charles Thomas
Approved	22/12/2023	Charles Thomas

CONTENTS

- 1. INTRODUCTION 5**
- 2. APPLICATION..... 8**
 - 2.1. Site Location 8
 - 2.2. Environmental Setting 9
- 3. PERMITTED OPERATIONS..... 11**
 - 3.1. Waste Acceptance 11
 - 3.2. Waste Processing 12
 - 3.3. Site Management..... 12
- 4. RISK ASSESSMENT 13**
- 5. MANAGEMENT 13**

FIGURES

FIGURE	TITLE
Figure 1	Aerial image of the site, showing the permit boundary in green

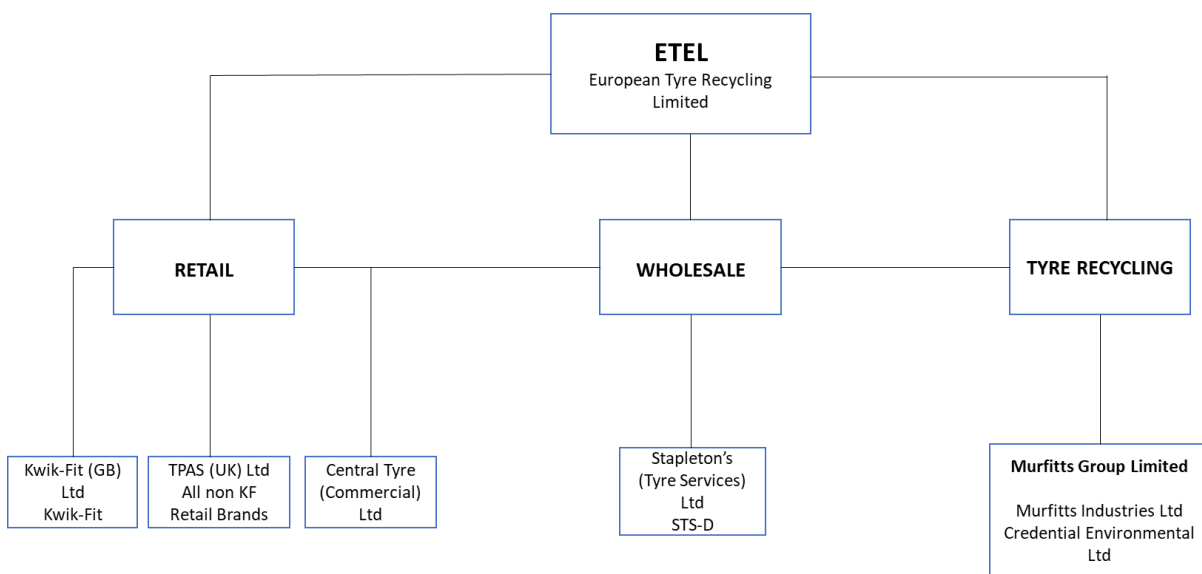
1. INTRODUCTION

This document is the Non-Technical Summary (NTS) (K18.17~09~001) that accompanies the application for a Bespoke Environmental Permit at One Portbury, Bradley Road, Portbury, BS20 7NZ (K18.17~20~001). The site is located at National Grid Reference ST 50545 76070.

This application is for an end-of-life tyre recycling facility accepting up to 15,000 tonnes of end of life tyres (EWC 16 01 03) per annum, with no more than 100 tonnes held on site at any one time.

The application has been prepared by Wisser Environment Limited, on behalf of the applicant Murfitts Industries Limited (MIL).

MIL is part of the European Tyre Enterprise Ltd. (ETEL) Group who are international tyre and automotive service, maintenance and repair business group that operate multiple retail brands including Kwik-Fit and Stapleton’s Tyre Services.



This site is to operate as part of a nationwide network of hubs accepting EoLT for storage and/or treatment (baling) before onward transfer to other permitted facilities where EoLT are processed and shredded. This strategic operation is ancillary to the main activity of distribution of new tyres to the retail sector in the UK, and allows for a close-loop system for the tyre industry.

The Environmental Permit covers the management of EoL tyres which are collected on takeback following delivery of new tyres to retail outlets that are not part of the ETEL Group.

EoL tyres are also collected from Group retail outlets, these are handled through the same secure supply chain, and on-site process but are done so under a Non Waste Framework Directive exemption.

Other hubs within the network, as they meet the appropriate location criteria, are to be operated in accordance with Standard Rules Environmental Permit (SREP) *SR2021 No 13: storage and mechanical treatment of end-of-life tyres for recovery*. The activities at the hubs are limited to either storage and onward transfer, or storage and baling prior to onward transfer, so are inherently low risk. Volumes of EoL tyres stored on site are less than 100 tonnes, and given the secure supply chain and logistics control, typically remain on site no longer than 48 hours under normal operational conditions.

The Portbury site undertakes the same activities (storage, manual sorting, and baling) as the other hubs but can't benefit from a SREP due to the fact that a Local Wildlife Sites (LWS) (*Drove Rhyne and adjacent fields*) is within 50m of the site.

The processes that will be carried out at the Portbury facility are the following:

- The EoLT are delivered to the site, some to the tyre bund and walking floor trailer for **storage** and onward dispatch to processing sites within the ETEL group.
- Some EoLT will be **baled** before transfer to processing facilities.
- the baled EoLT are loaded into a waiting traction trailer, for onward dispatch to a permitted MIL processing facility.

All deliveries to the site are planned:

- Under normal operating conditions all EoLT received will be processed directly into the waiting trailer and dispatched by the end of the working day.
- Under abnormal conditions, e.g., plant breakdown or organised shutdown, deliveries will be diverted to the Murfitts Industries Limited national network of permitted facilities.

The EoLT received at the site are contained either within the delivery vehicle, in the tyre bund or walking floor trailer (loose tyres), held within the processing equipment, or a designated storage bay (baled tyres).

The facility is co-located with a strategic Stapleton's tyre distribution centre and provides a closed loop, taking back EoLT received on vehicles that have delivered new tyres, from the distribution centre to retail centres across the region.

This NTS summarises the proposed activities to be regulated under the Environmental Permit and should be read in conjunction with the other supporting documents included within the application.

2. APPLICATION

This application is for a bespoke Environmental Permit and has been prepared under the Environmental Permitting (England and Wales) Regulations 2016 (as amended) for a Waste Operation.

The scope of this application is limited to the storage and mechanical treatment (tyre baling) of EoLT, and the subsequent dispatch of EoLT for onward processing to create various non-waste products.

The Operator, Murfitts Industries Limited (MIL) is part of the European Tyre Enterprise Ltd (ETEL) Group who are an international tyre and automotive service, maintenance and repair business group that operate multiple retail brands including Kwik-Fit and Stapletons Tyre Services (STS).

Waste is delivered to site, via vehicles operated by STS or MIL; waste tyres are loaded into cages while they await baling. Baled tyres are loaded onto a traction trailer and taken to a Murfitts processing hub either directly or via a hub.

This site is to operate as an ancillary operation, undertaking storage and baling of EoL tyres before onward transfer to other permitted facilities. At these facilities EoL tyres are processed and shredded. This strategic operation allows for a close-loop system for the tyre industry, offering the service of shredding the EoL tyres to create various, non-waste product.

2.1. Site Location

The site lies in an industrial area of Portbury, approximately 920 m north-east from the centre of the village, and a similar distance from the village of Pill.

The permitted boundary covers approximately 0.35 ha, with the storage and baling process occurring on a limited part of this area.

The A369 is located approximately 270 m southwest of the site. The M5 is approximately 445 m south of site.



Figure 1 Aerial image of the site, showing the permit boundary in green

2.2. Environmental Setting

The environmental setting of the site is summarised in Table 1. A more detailed description of the site setting can be found in the Environmental Risk Assessment (ERA) (K18.17~09~003) within Section 4 of the application pack:

Table 1 Summary of Site Setting

Receptor	Description and location
Humans and Property	The surrounding environmental setting is predominantly commercial. The closest residential area located approximately 665 m South-West.
Surface Water	There are 18 records of surface water features within 2 km of the site, mostly inland rivers. The Drove Rhyne river is located approx. 20 m south.
Groundwater	The superficial deposits identified underlying the site are designated as a Secondary A Aquifer. The underlying bedrock is considered a Secondary B aquifer.
Designated Sites	There are, in total, 5 designated sites positioned within 2 km of the proposed site. Two were uncovered during the Environment Agency pre-application screening, identified as Local Wildlife Sites located approx. 25 m and 370 m from site respectively. The remaining three all relate to the Severn Estuary and areas classed as Sites of Special Scientific Interest, Special Protection Areas, and Ramsar sites. These are located approx. 1410 m from the permitted area.
Non-Statutory Designated Sites	There are 30 Non-Statutory Designated Receptors, (Site Setting Plan K18.17~20~003), within a 2 km radius of the proposed site. The majority of which are UK Biodiversity Action Plan (BAP) Sites ¹ . Others are made up of Traditional Orchards and Ancient Woodlands. A full list is provided in the Sensitive Receptors Table included within the application pack.
Geology	There is evidence of Mercia Mudstone being the predominant bedrock formation underlying site and was formed in the Rhaetian Age. Superficial drift geological deposits identified on site are described as River Terrace Deposits (sand and gravel).
Flooding	The site does not fall within an Environment Agency Zone 2 or Zone 3 floodplain. Site has a very low probability of flooding from rivers and sea and surface water.

¹ <https://hub.jncc.gov.uk/assets/bdd8ad64-c247-4b69-ab33-19c2e0d63736>

3. PERMITTED OPERATIONS

The site will accept, store, and treat (bale) EoLTs.

The processes that will be carried out at site are the following:

- The EoLTs are delivered to the site and are unloaded by hand into the baler or the tyre bund while they await to be baled.
- the baled EoLT are stored on the impermeable surface whilst they await onward dispatch to a permitted Murfitts processing facility.

Description of activities		Limits of activities
R3	Recycling or reclamation of organic substances which are not used as solvents, including composting and other biological transformation processes.	Storage prior to and post treatment. Treatment consisting only of manual sorting and baling prior to dispatch for onward recovery.
R4	Recycling or reclamation of metals and metal compounds	
R13	Storage of waste pending any of the operations numbered R1 to R12 (excluding temporary storage, pending collection, on the site where the waste is produced)	

3.1. Waste Acceptance

The proposed annual throughput is 15,000 tonnes.

EoL tyres will enter the Portbury Hub via STS vehicles, taken directly from STS customers or customers of MIL. Upon entering site, a load is inspected against the relevant waste transfer documentation to ensure that descriptions are correct. Deliveries are pre-booked to ensure control and to reinforce the site’s acceptance procedure.

Once a visual inspection has been conducted and the load accepted, they are unloaded into cages to be taken directly to the baling area or stored while they await to be baled.

The Management System Summary (MSS) (K18.17~09~002) describes the waste acceptance procedure for the site in more details.

3.2. Waste Processing

As described EoLT are subject to a waste acceptance procedure and once accepted unloaded and stored within the tyre bund. Loose tyres will be stored within the bunded area or loaded directly into the balers (see Site Layout Plan, K18.17~20~004).

Once processed, the bales are either loaded onto a vehicle for onward transport to a MIL processing facility or stored within the designated area on site while they await collection (see Site Layout Plan, K18.17~20~004). All tyre bales will be taken to a MIL facility for further processing.

3.3. Site Management

Operations will be overseen by Technically Competent Manager qualified through schemes approved under the Environmental Permitting (England and Wales) Regulations 2016 (as amended).

The operator shall manage and operate the activities:

- a) in accordance with a written management system that identifies and minimises risks of pollution, including those arising from operations, maintenance, accidents, incidents, non-conformances, closure and those drawn to the attention of the operator as a result of complaints;
- b) using sufficient competent persons and resources, and
- c) with records demonstrating compliance.

Any person having duties that are or may be affected by the matters set out in the Environmental Permit shall have access to a copy of it.

The operator shall comply with the requirements of an approved competence scheme.

Daily inspections of site infrastructure will be undertaken by the Technically Competent Manager (TCM) or a person appointed by the TCM, in accordance with Section 6.4 in the Management System Summary.

4. RISK ASSESSMENT

An Environmental Risk Assessment (ERA) (K18.17~09~003) is included in Section 04 of the application pack. The ERA details the key management measures for the protection of the environment, with regards to emissions to surface water, groundwater, land, and air (including noise and odour).

5. MANAGEMENT

The site is operated by Murfitts Industries Limited, a Management System Summary (MSS) (K18.17~09~002) has been developed and is included within in this application pack to reflect and control site operations, environmental management, emissions, and monitoring.

The MSS defines operational and maintenance procedures and details requirements in the event of an accident or incident. Murfitts Industries Limited's business management system is certified to ISO14001 Environmental Management and 9001 Quality Management, the intention is that this will be extended to the Portbury site subject to other business demands.