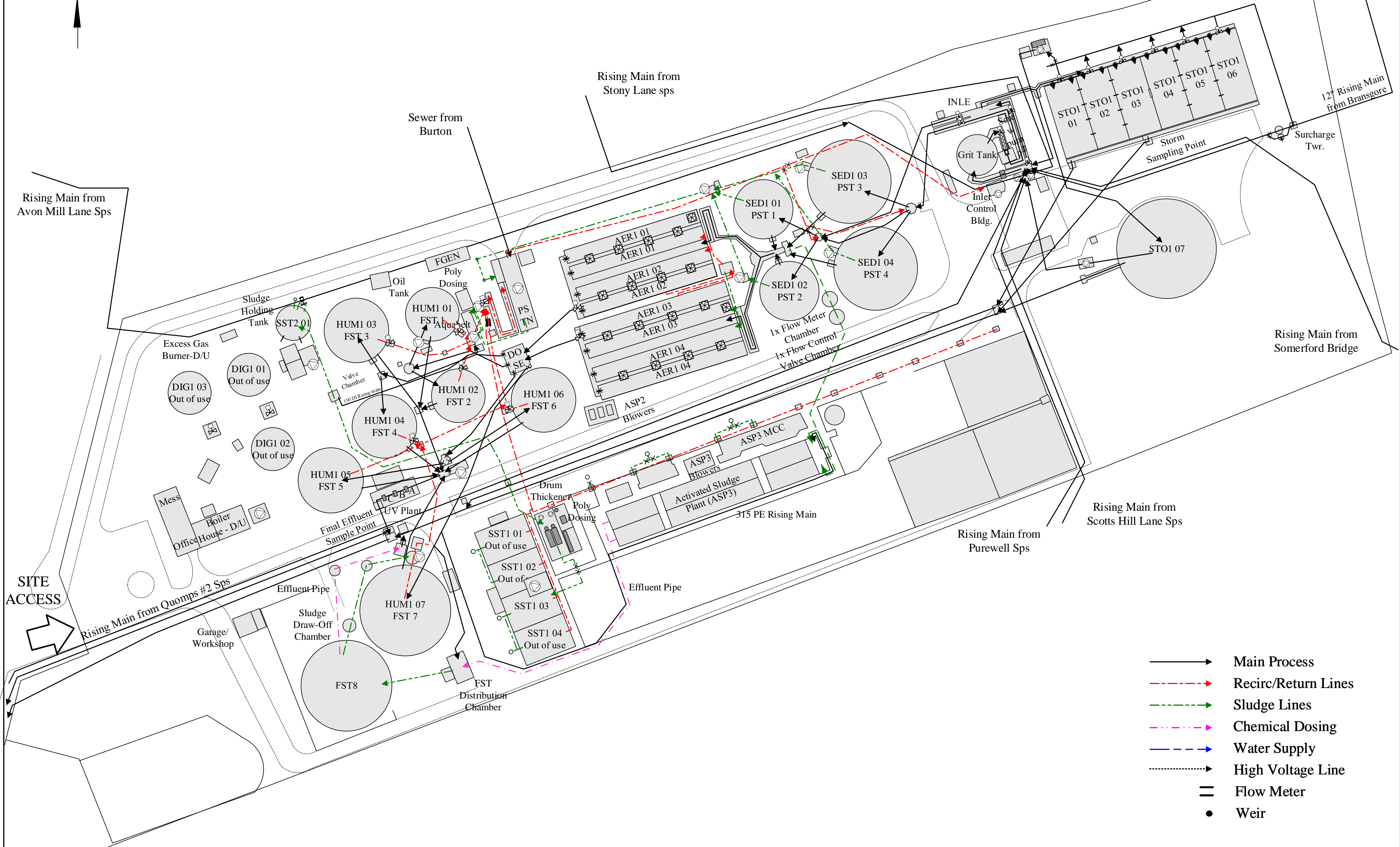
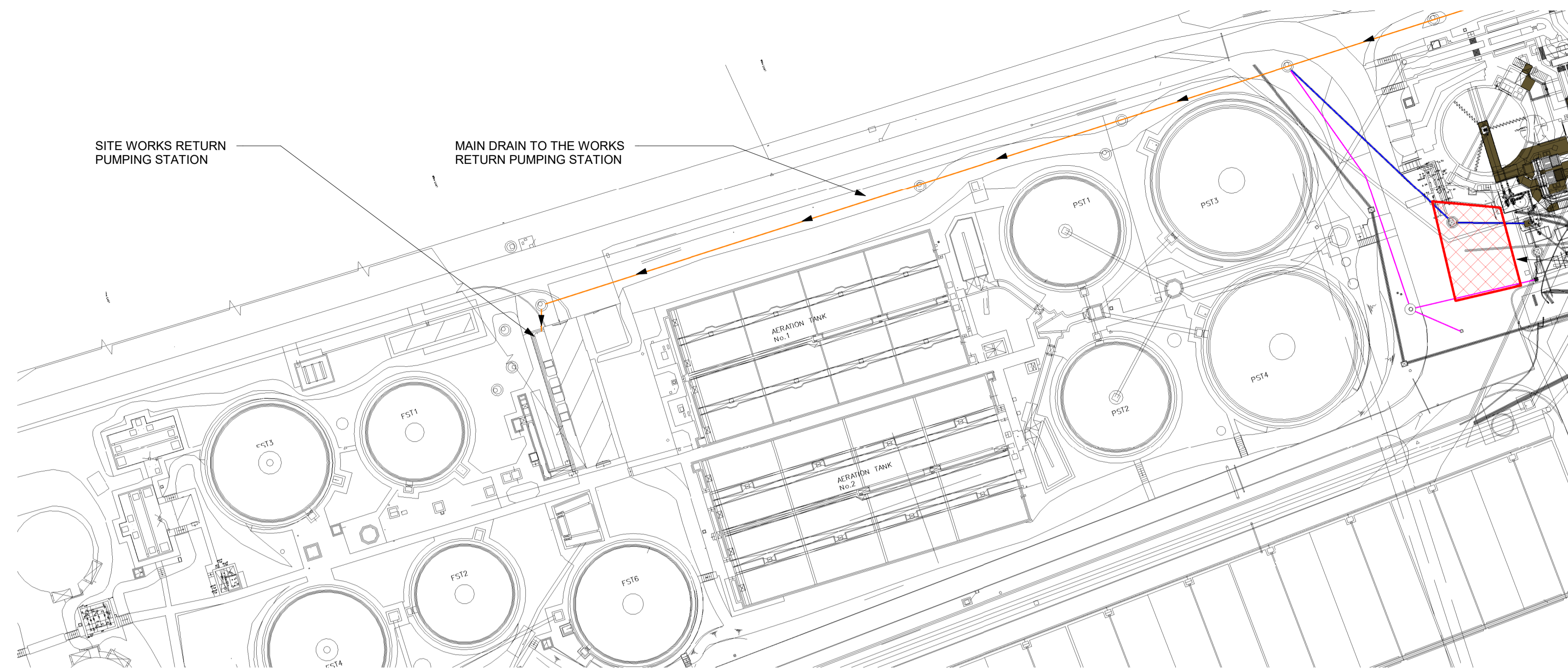
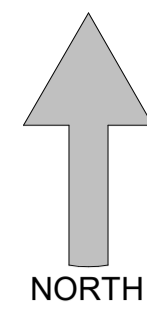


NORTH





DRAINAGE PLAN NOTES:
DRAINAGE SYSTEMS WITHIN THE FACILITY ARE CONNECTED BACK TO THE SITE WORKS RETURN PUMPING STATION. ALL FLOWS COLLECTED HERE ARE PUMPED BACK UP TO THE MAIN INLET FOR TREATMENT.

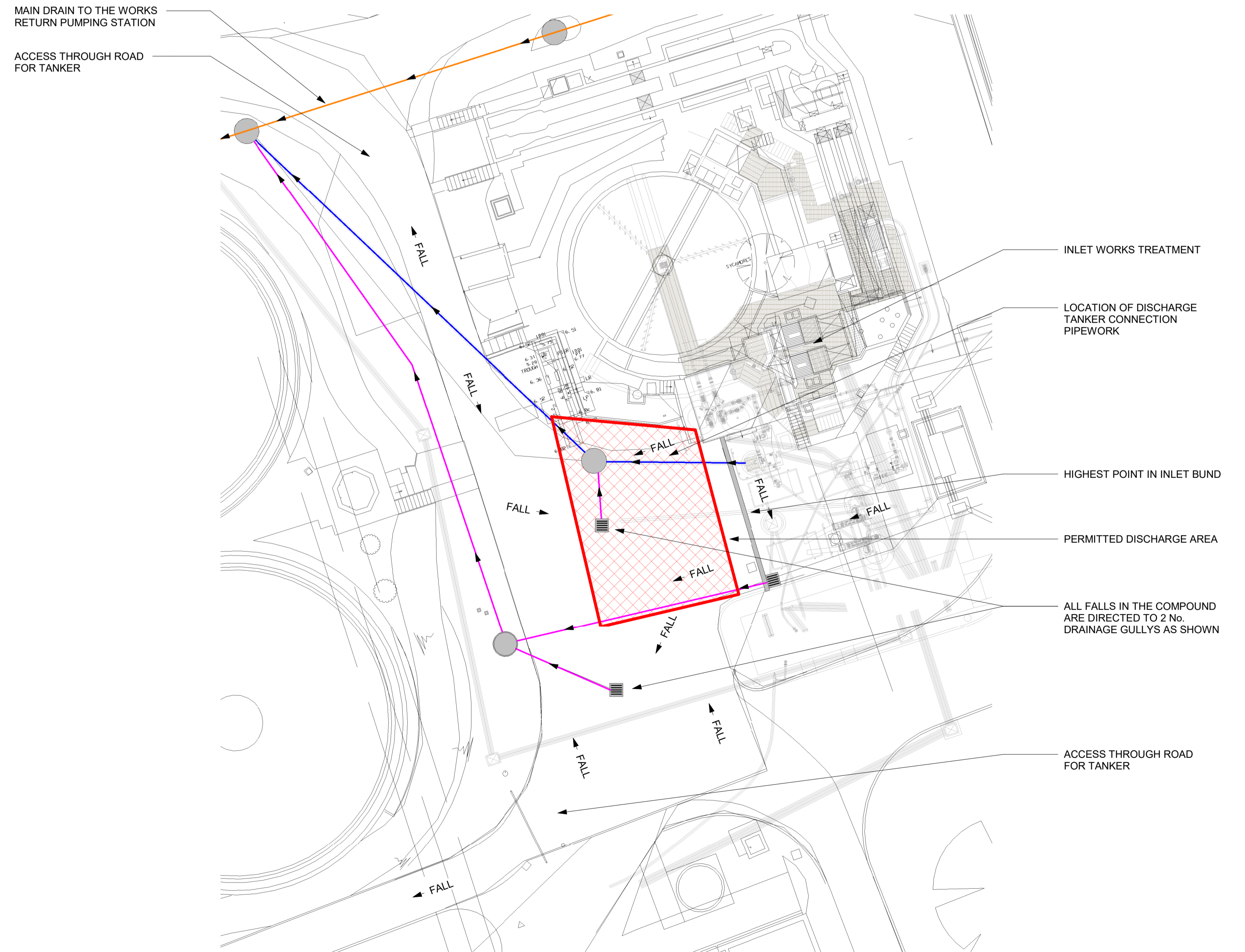
- 300 DIA DRAIN PIPE
- 225 DIA DRAIN PIPE
- 150 DIA DRAIN PIPE

SITE ID 13066
NGR SZ 16563 93648

NOTES

- ANY MAPS SHOWN ON THIS DRAWING ARE REPRODUCED FROM THE ORDNANCE SURVEY MAP WITH THE PERMISSION OF HER MAJESTY'S STATIONERY OFFICE © CROWN COPYRIGHT
- UNLESS NOTED OTHERWISE ALL DIMENSIONS ARE IN MILLIMETRES & ALL LEVELS ARE IN METRES AOD.

SITE PLAN
SCALE 1 : 500



TANKER DELIVERY PLAN
SCALE 1 : 200

A	APPROVED FOR ISSUE	LD	MO	11/11/2021
MK	REVISIONS	DRN	CHK	APP

CHRISTCHURCH WRC

TREATMENT CENTRE FACILITY
DRAINAGE PLAN

APPROVED FOR ISSUE

ORIGINAL DRAWING NUMBER	SCALE	As indicated
13066/1000		
DRAWING NUMBER	REV.	A