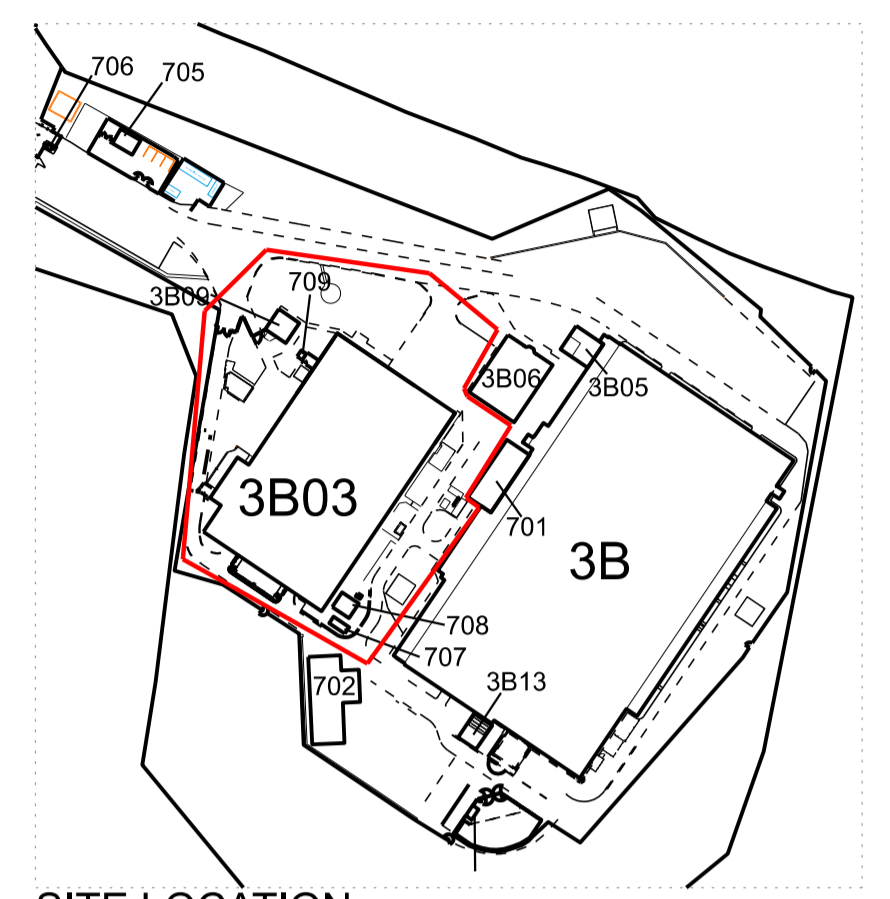
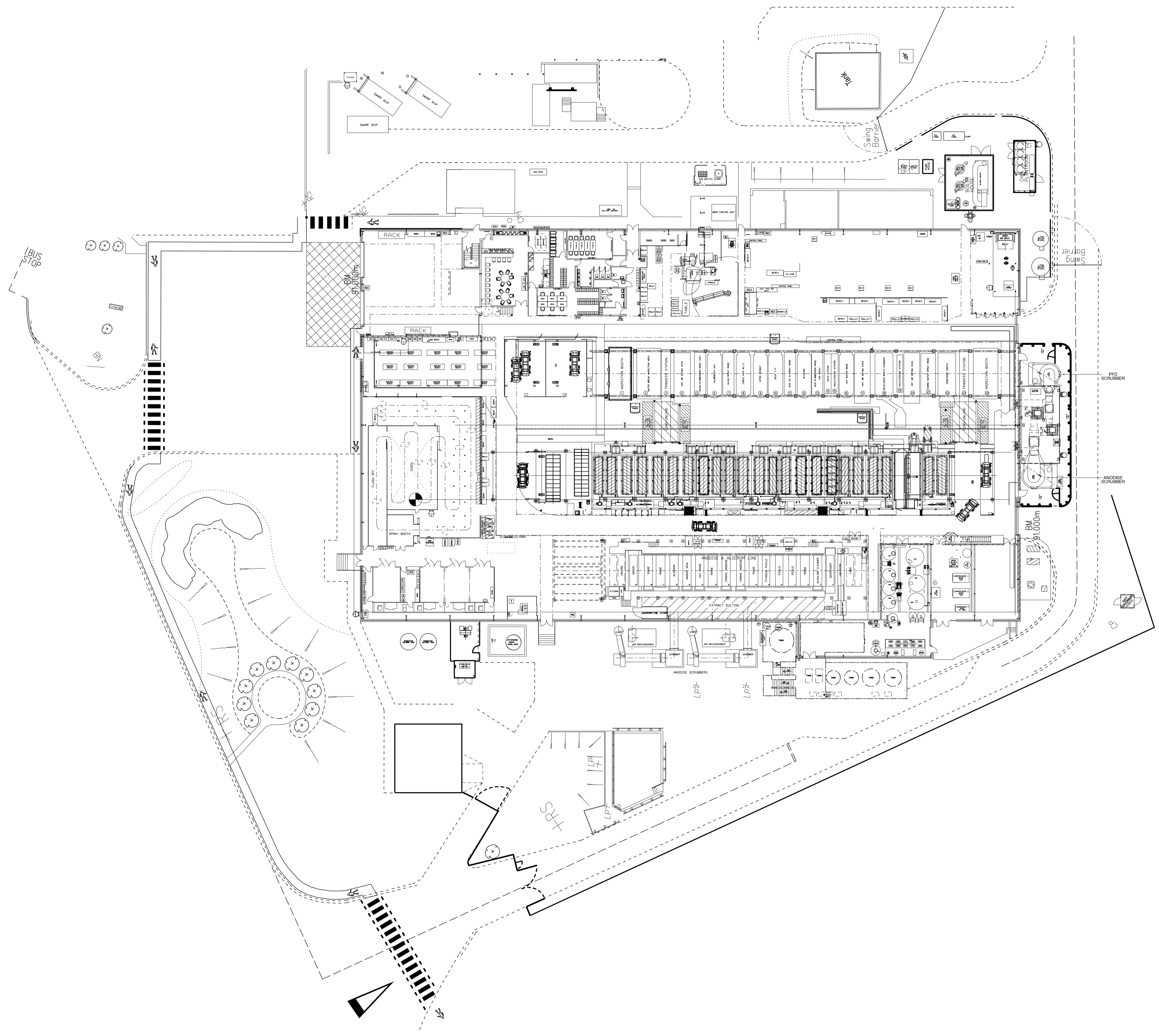


GENERAL NOTES

1. THIS DRAWING IS INTENDED TO BE PART OF THE BAE SYSTEMS ENGINEERING SPECIFICATION.
2. IT IS INTENDED TO TRANSFER BAE SYSTEMS BASIC REQUIREMENTS TO THE CONTRACTOR SO AS TO ENABLE THE CONTRACTOR TO FORMULATE THE FULL DESIGN.
3. ALL WORK, INCLUDING FURTHER DESIGN, IS THE RESPONSIBILITY OF THE CONTRACTOR.
4. ALL WORK, INCLUDING DESIGN, IS TO BE CARRIED OUT TO THE RELEVANT STANDARD, I.E. - B.S. CODE OF PRACTICE, LOCAL BYELAW, BAE SYSTEMS SPECIFICATION.
5. WHILE BAE ENDEAVOUR TO PROVIDE ACCURATE RECORDS OF SERVICES, IT IS THE CONTRACTORS RESPONSIBILITY TO VERIFY LOCATIONS OF ALL SERVICES IN ORDER TO COMPLETE THE FINAL DESIGN.



SITE LOCATION



| Rev. | Description | Date |
|------|-------------|----------|
| P1 | AS FITTED | 24-07-23 |

No part of this drawing may be copied or reproduced or any information contained on this drawing given to a third party without the prior written permission of:
Infrastructure and Facilities Services - Air BAE Systems (Operations) Ltd.
 This drawing contains information, as held on the I&FS FM CAD System at the date of printing only... 25/07/2023

Project
 21S0096 - S3803 CTF DI WATER & EFFLUENT UPGRADE

Title
 S3803 CTF BUILDING - DI WATER EFFLUENT UPGRADE AS INSTALLED BUILDING LAYOUT

Status
 X Suitable For
 <Suitability Description>

| | | |
|---------------------|--------------------|--------------------------|
| Designer A SMITH | Engineer <NAME> | Date Created 21/06/23 |
|---------------------|--------------------|--------------------------|

| | |
|---|---------------------------------------|
| Scale 1:300 @ A1 <small>Printed at 1:1 N.T.S.</small> | Project/Sheet Number 21S0096 / 012 |
|---|---------------------------------------|

| | |
|---|------------|
| Drawing Reference <DRAWING REFERENCE NO> | Rev. P1 |
|---|------------|

Infrastructure and Facilities Services - Air
 BAE SYSTEMS
 SAMESBURY AERODROME
 BALDERSTONE
 BLACKBURN
 LANCASHIRE
 BB2 7LF
 Tel: 03300 476166



Samesbury Site
 © BAE Systems (Operations) Ltd. All rights reserved.
 Company Marking
 <COMPANY MARKING>
 Government Marking
 <GOVERNMENT MARKING>