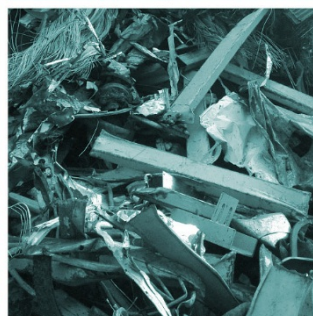
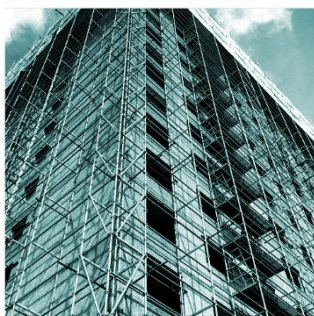
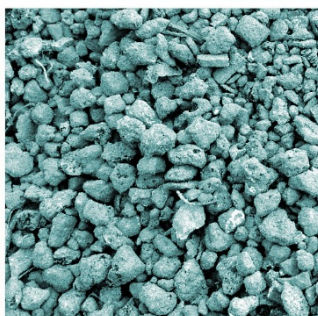
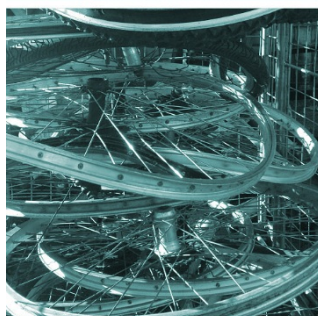
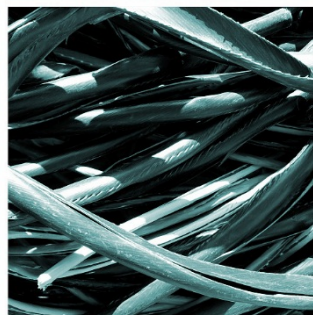


EVERCREECH RENEWABLE ENERGY LIMITED AD FACILITY

Supporting Documents Continued

October 2021



Client: BioConstruct GmbH
Document Reference: HC1683-23

REPORT SCHEDULE

Operator: BioConstruct NewEnergy Limited

Client: BioConstruct GmbH

Project Title: Evercreech Renewable Energy Permit Application

Document Title: Supporting Documents Continued

Document Reference: HC1683-23

Report Status: Final 1.0

Project Director: Joanna Holland

Project Manager: Jo Chapman

AUTHOR	DATE
Jo Chapman	11 th October 2021
REVIEWER	
Joanna Holland	17 th October 2021
APPROVED	
Joanna Holland	17 th October 2021

REVISION HISTORY	DATE	COMMENTS	APPROVED
Final Version 1.0	17 th October 2021	For Submission to EA	Bastian Woelm

DISCLAIMER

This report has been prepared by H&C Consultancy Ltd with all reasonable skill, care and diligence. It has been prepared in accordance with instructions from the client and within the terms and conditions agreed with the client. The report is based on information provided by the Client and our professional judgment at the time this report was prepared.

The report presents H&C Consultancy's professional opinion and no warranty, expressed or implied, is made.

This report is for the sole use of The Client and BioConstruct NewEnergy Limited, and H&C Consultancy Ltd shall not be held responsible for any user of the report or its content for any purpose other than that for which it was prepared and provided to the client. H&C Consultancy accepts no liability to third parties.



CONTENTS

1. Part F1	1
------------------	---

1. FORM PART F1

1.1. Application Checklist

1.1.1. Application Form F1 requires the applicant to list all the documents that are provided in support of the application and if necessary, continue on a separate sheet the table below forms the continuation sheet of supporting documents.

Table 6

Question Reference	Document Title	Document Reference
Part B3, Question 3a	Process Flow	HC1683-12
Part B3, Question 3b (Table 4)	Fugitive Emissions Management Plan	HC1683-13
Part B3, Question 3b (Table 4)	Odour Management Plan	HC1683-14
Part B3, Question 3b (Table 4)	Noise and Vibration Management Plan	HC1683-15
Part B3, Question 3c and 6d	Raw Materials List	HC1683-16
Part B3, Questions 4a	Emission Point Monitoring	HC1683-17
Part B3, Question 4b	CHP Sample Point Locations	HC1683-18
Part B3, Question 6a-c	Energy Balances and Resource Efficiency	HC1683-19
Part B3, Question 6e	Waste Recovery	HC1683-20
Part B3, Question 7a	Combustion Plant	HC1683-21
	Accident Management Plan	HC1683-22
	List of Permit Application Documents	HC1683-00
Part F	Application Fee	BACS payment reference PSCAPPBIOCO1683
	Form Part A	HC1683-25
	Form Part B2	HC1683-26
	Form Part B3	HC1683-27
	Form Part F1	Hc1683-28



Registered office:
Staffordshire House
Beechdale Road
Nottingham NG8 3FH
Company No. 7861810

☎ 0115 923 2253
☎ 07506 658098 / 07525 211381
🌐 www.hc-consultancy.co.uk