

VolkerFitzpatrick ✓	VolkerFitzpatrick-Rail ✓	VolkerRail n/a	VolkerStevin ✓	VolkerHighways ✓	VolkerLaser ✓	VolkerServices n/a
------------------------	-----------------------------	-------------------	-------------------	---------------------	------------------	-----------------------

1. PURPOSE

This guidance should be used to manage the actions in the event of an environmental incident.

2. GUIDANCE

See relevant sections of this document.

3. OTHER RESOURCES

[Pollution prevention for businesses - GOV.UK \(www.gov.uk\)](https://www.gov.uk/guidance/pollution-prevention-for-businesses). How businesses and organisations can avoid causing pollution from oil and chemical storage, vehicle washing, construction and other activities.

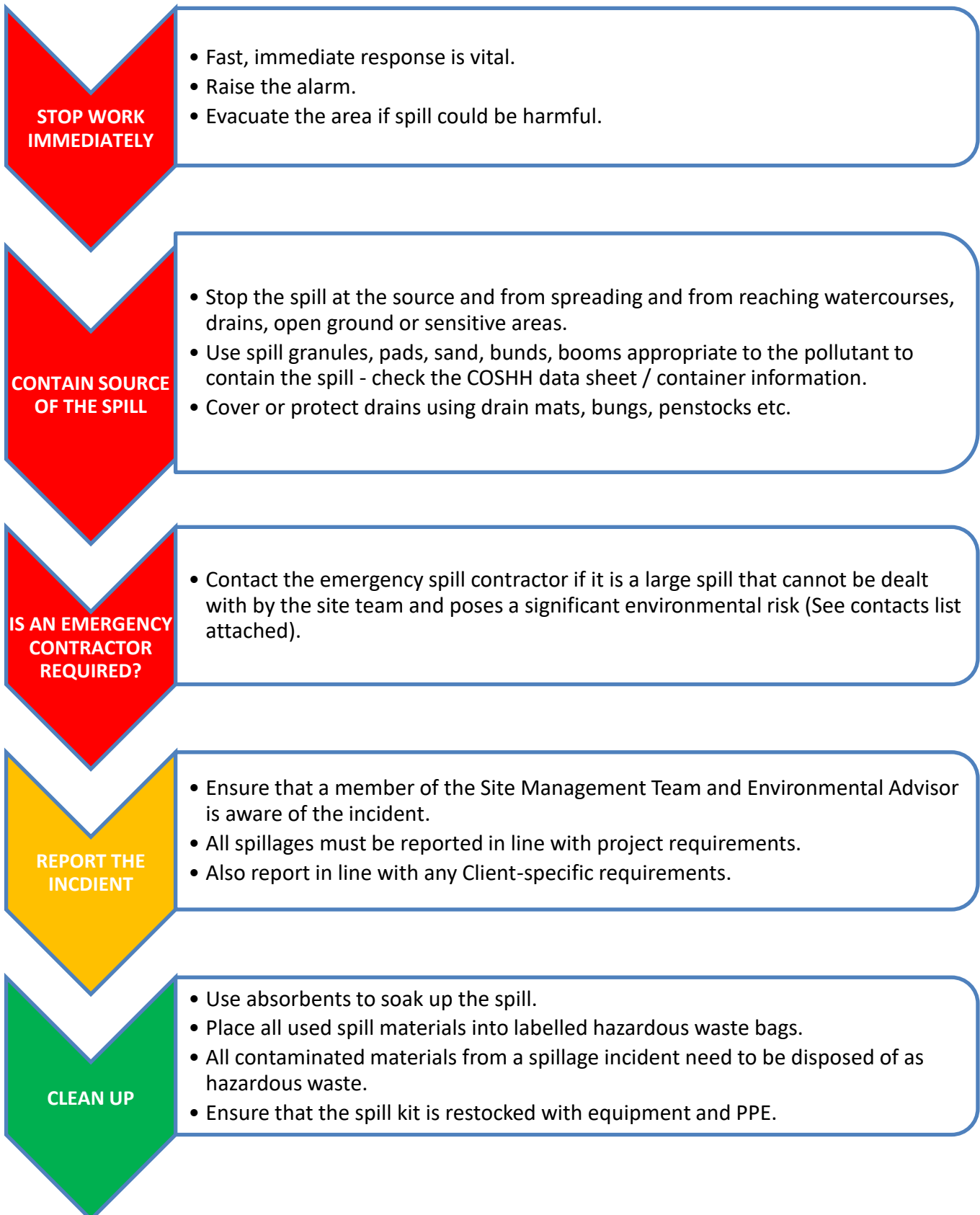
4. WHO ELSE CAN I ASK?

If you require any further information regarding this guidance, please contact your Environmental Manager.

Issue no.:	3	Date:	May 2023	Parent document:	E03 Environmental Protection and Incident Response		
Approved for IMS:	IMS Manager	Document owner:	CR Director	Workspace file:	n/a	Page 1 of 7	

VolkerFitzpatrick ✓	VolkerFitzpatrick-Rail ✓	VolkerRail n/a	VolkerStevin ✓	VolkerHighways ✓	VolkerLaser ✓	VolkerServices n/a
------------------------	-----------------------------	-------------------	-------------------	---------------------	------------------	-----------------------

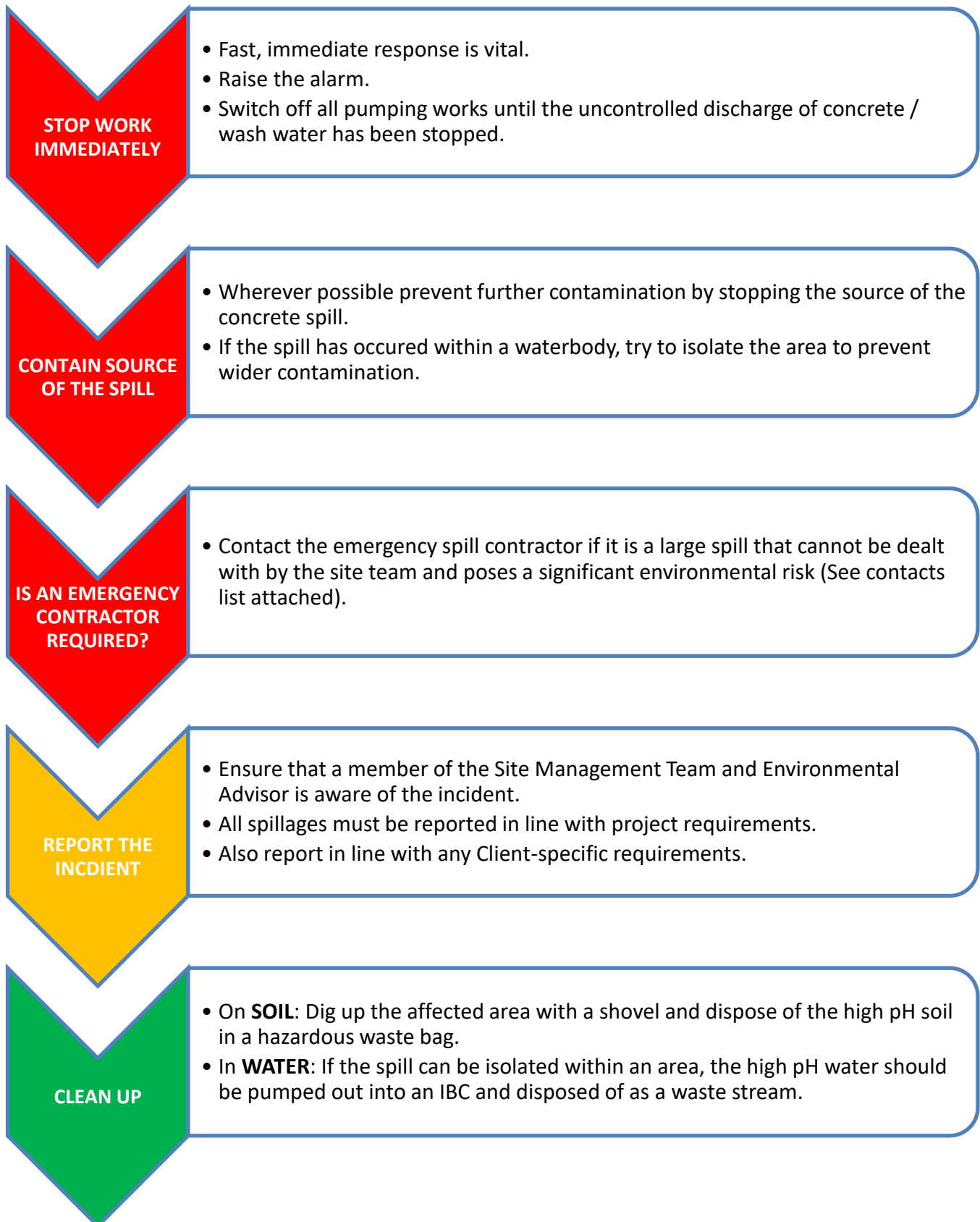
ACTIONS IN THE EVENT OF An **OIL, CHEMICAL & FUEL SPILL:**



Issue no.:	3	Date:	May 2023	Parent document:	E03 Environmental Protection and Incident Response		
Approved for IMS:	IMS Manager	Document owner:	CR Director	Workspace file:	n/a	Page 2 of 7	

VolkerFitzpatrick ✓	VolkerFitzpatrick-Rail ✓	VolkerRail n/a	VolkerStevin ✓	VolkerHighways ✓	VolkerLaser ✓	VolkerServices n/a
------------------------	-----------------------------	-------------------	-------------------	---------------------	------------------	-----------------------

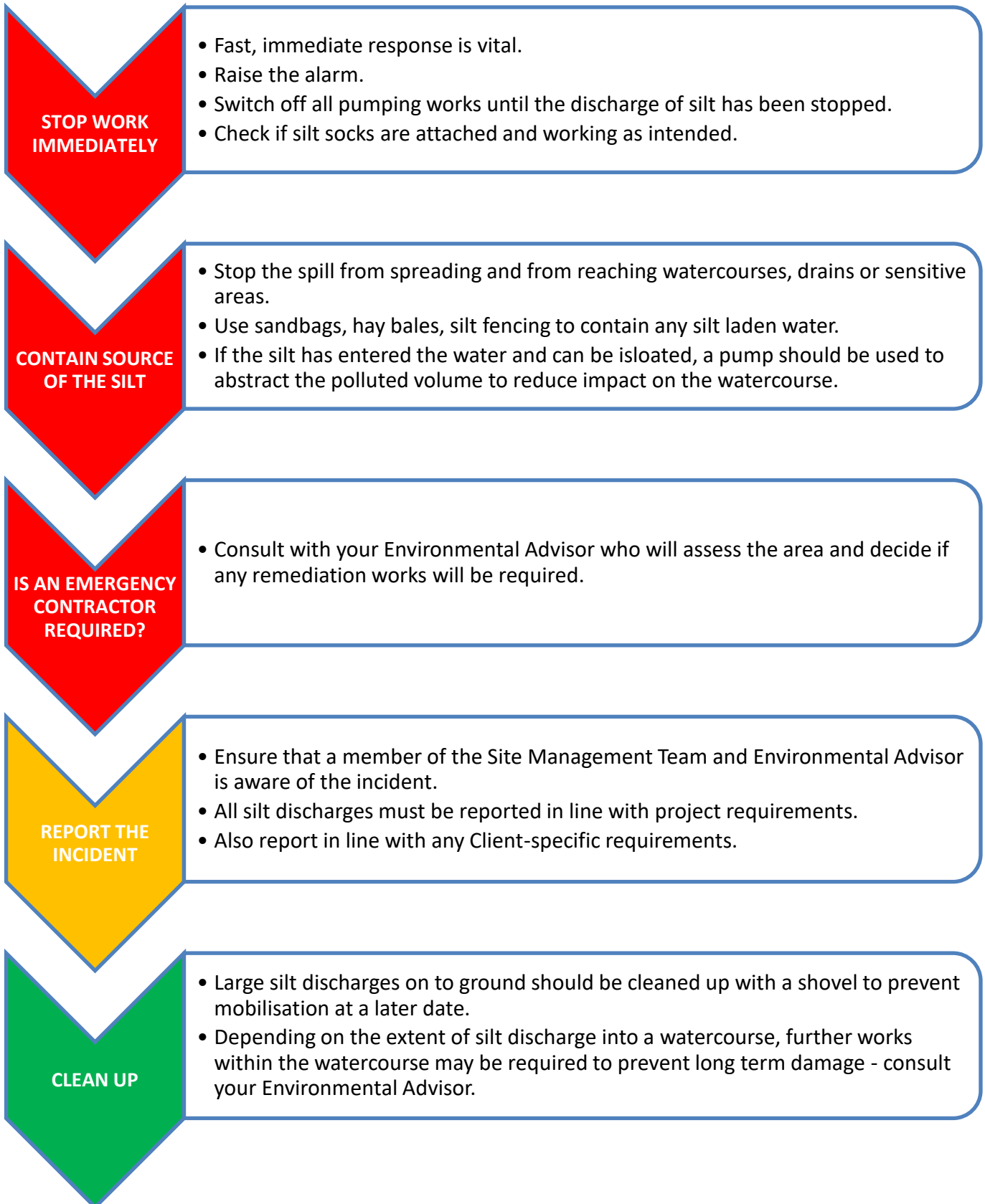
ACTIONS IN THE EVENT OF A CONCRETE WASHOUT SPILL:



Issue no.:	3	Date:	May 2023	Parent document:	E03 Environmental Protection and Incident Response		
Approved for IMS:	IMS Manager	Document owner:	CR Director	Workspace file:	n/a	Page 3 of 7	

VolkerFitzpatrick ✓	VolkerFitzpatrick-Rail ✓	VolkerRail n/a	VolkerStevin ✓	VolkerHighways ✓	VolkerLaser ✓	VolkerServices n/a
------------------------	-----------------------------	-------------------	-------------------	---------------------	------------------	-----------------------

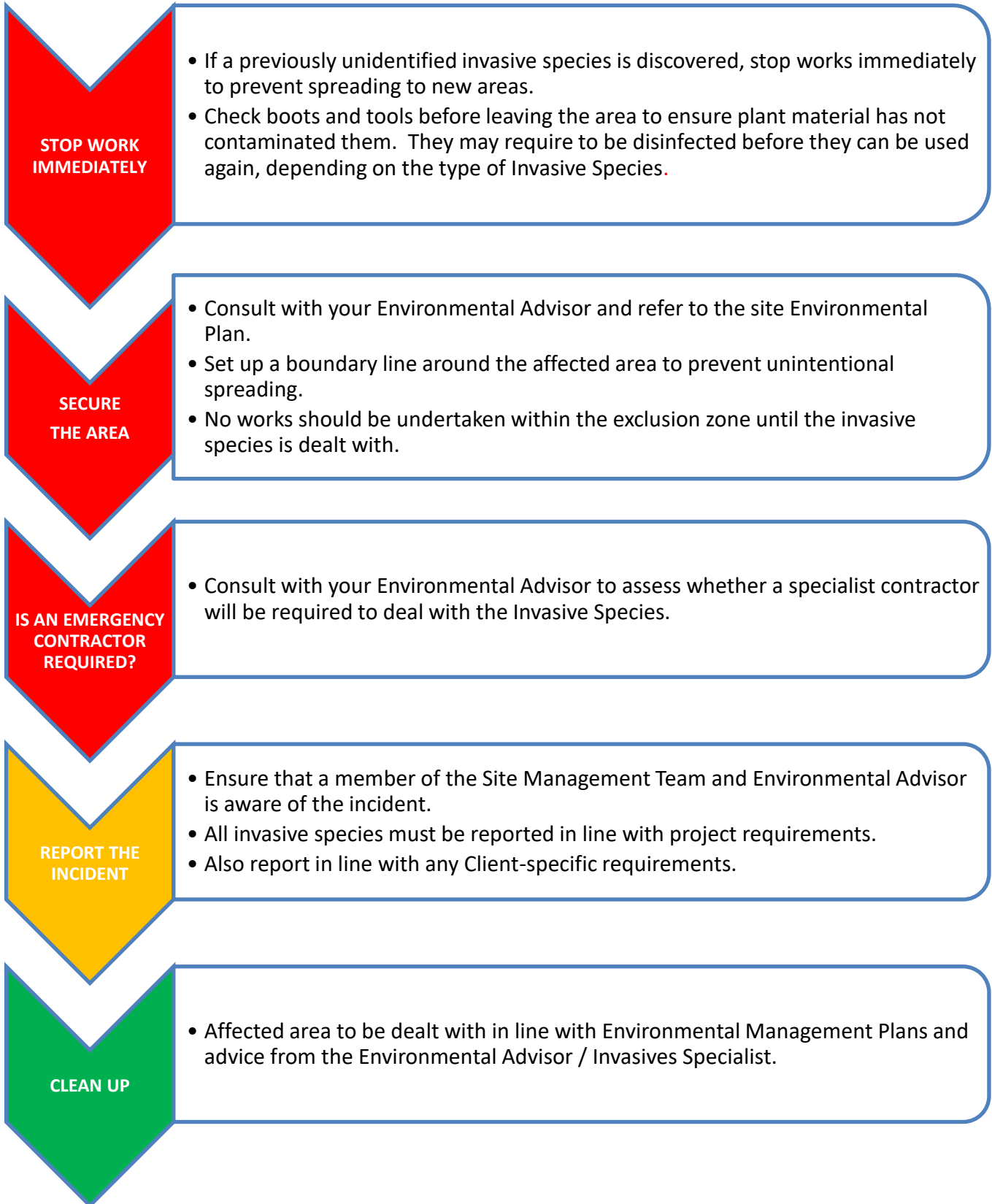
ACTIONS IN THE EVENT OF A SILT DISCHARGE:



Issue no.:	3	Date:	May 2023	Parent document:	E03 Environmental Protection and Incident Response		
Approved for IMS:	IMS Manager	Document owner:	CR Director	Workspace file:	n/a	Page 4 of 7	

VolkerFitzpatrick ✓	VolkerFitzpatrick-Rail ✓	VolkerRail n/a	VolkerStevin ✓	VolkerHighways ✓	VolkerLaser ✓	VolkerServices n/a
------------------------	-----------------------------	-------------------	-------------------	---------------------	------------------	-----------------------

ACTIONS IN THE EVENT OF AN INVASIVE SPECIES DISCOVERY:



STOP WORK IMMEDIATELY

- If a previously unidentified invasive species is discovered, stop works immediately to prevent spreading to new areas.
- Check boots and tools before leaving the area to ensure plant material has not contaminated them. They may require to be disinfected before they can be used again, depending on the type of Invasive Species.

SECURE THE AREA

- Consult with your Environmental Advisor and refer to the site Environmental Plan.
- Set up a boundary line around the affected area to prevent unintentional spreading.
- No works should be undertaken within the exclusion zone until the invasive species is dealt with.

IS AN EMERGENCY CONTRACTOR REQUIRED?

- Consult with your Environmental Advisor to assess whether a specialist contractor will be required to deal with the Invasive Species.

REPORT THE INCIDENT

- Ensure that a member of the Site Management Team and Environmental Advisor is aware of the incident.
- All invasive species must be reported in line with project requirements.
- Also report in line with any Client-specific requirements.

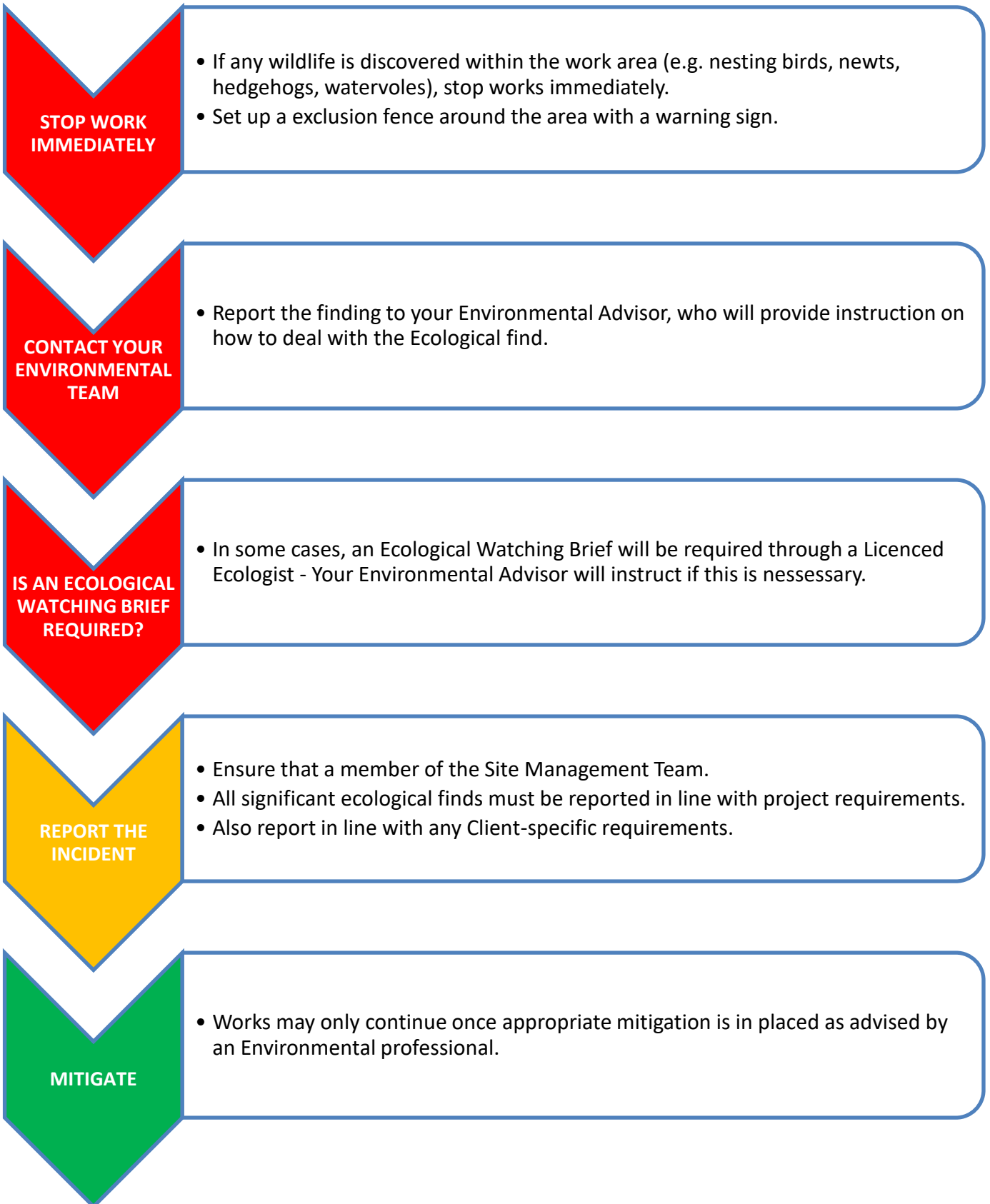
CLEAN UP

- Affected area to be dealt with in line with Environmental Management Plans and advice from the Environmental Advisor / Invasives Specialist.

Issue no.:	3	Date:	May 2023	Parent document:	E03 Environmental Protection and Incident Response		
Approved for IMS:	IMS Manager	Document owner:	CR Director	Workspace file:	n/a	Page 5 of 7	

VolkerFitzpatrick ✓	VolkerFitzpatrick-Rail ✓	VolkerRail n/a	VolkerStevin ✓	VolkerHighways ✓	VolkerLaser ✓	VolkerServices n/a
------------------------	-----------------------------	-------------------	-------------------	---------------------	------------------	-----------------------

ACTIONS IN THE EVENT OF AN ECOLOGICAL DISCOVERY:



STOP WORK IMMEDIATELY

- If any wildlife is discovered within the work area (e.g. nesting birds, newts, hedgehogs, wolveroles), stop works immediately.
- Set up a exclusion fence around the area with a warning sign.

CONTACT YOUR ENVIRONMENTAL TEAM

- Report the finding to your Environmental Advisor, who will provide instruction on how to deal with the Ecological find.

IS AN ECOLOGICAL WATCHING BRIEF REQUIRED?

- In some cases, an Ecological Watching Brief will be required through a Licenced Ecologist - Your Environmental Advisor will instruct if this is nessessary.

REPORT THE INCIDENT

- Ensure that a member of the Site Management Team.
- All significant ecological finds must be reported in line with project requirements.
- Also report in line with any Client-specific requirements.

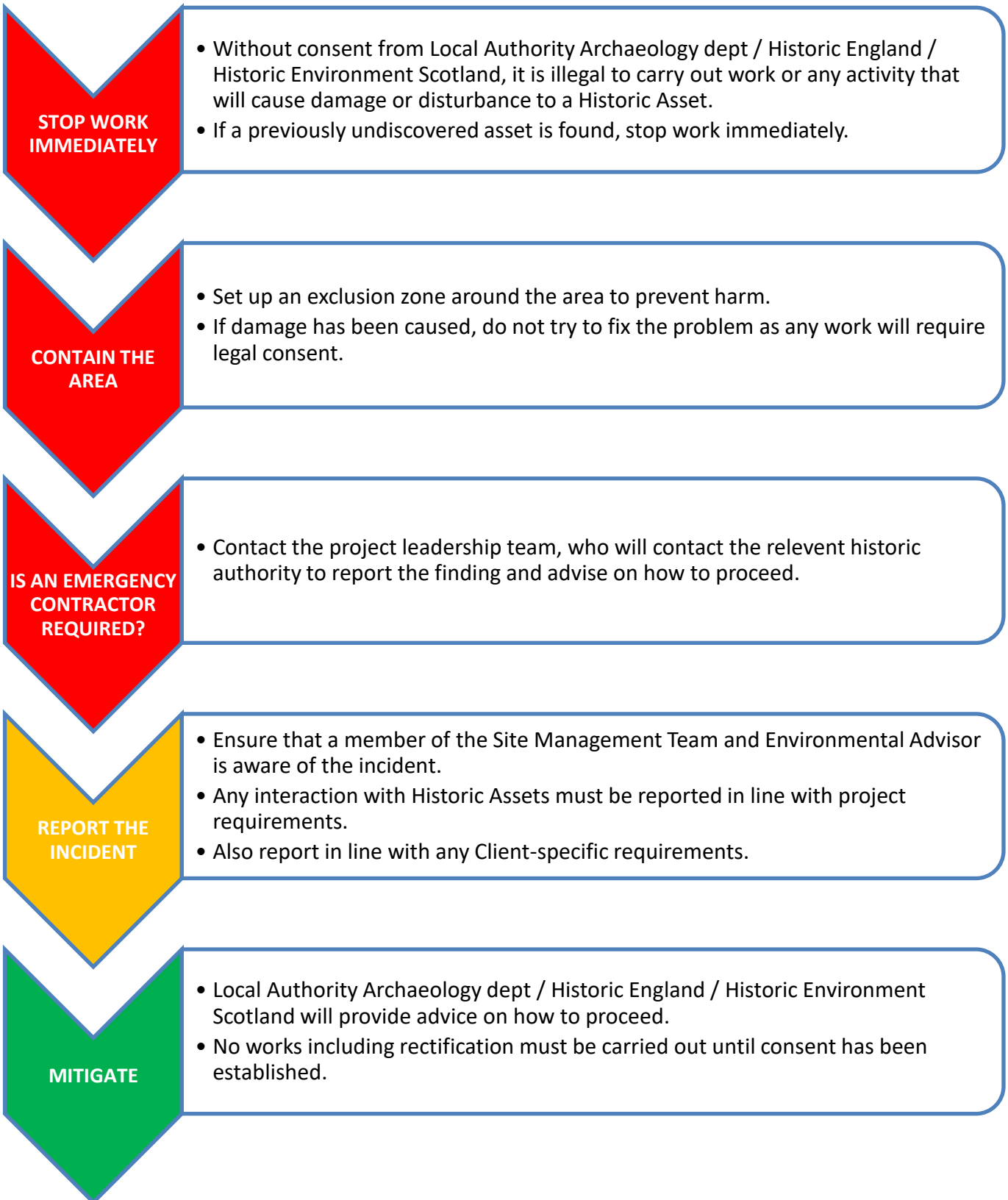
MITIGATE

- Works may only continue once appropriate mitigation is in placed as advised by an Environmental professional.

Issue no.:	3	Date:	May 2023	Parent document:	E03 Environmental Protection and Incident Response		
Approved for IMS:	IMS Manager	Document owner:	CR Director	Workspace file:	n/a	Page 6 of 7	

VolkerFitzpatrick ✓	VolkerFitzpatrick-Rail ✓	VolkerRail n/a	VolkerStevin ✓	VolkerHighways ✓	VolkerLaser ✓	VolkerServices n/a
------------------------	-----------------------------	-------------------	-------------------	---------------------	------------------	-----------------------

ACTIONS IN THE EVENT OF IDENTIFICATION / DAMAGE TO A HISTORIC ASSET:



STOP WORK IMMEDIATELY

- Without consent from Local Authority Archaeology dept / Historic England / Historic Environment Scotland, it is illegal to carry out work or any activity that will cause damage or disturbance to a Historic Asset.
- If a previously undiscovered asset is found, stop work immediately.

CONTAIN THE AREA

- Set up an exclusion zone around the area to prevent harm.
- If damage has been caused, do not try to fix the problem as any work will require legal consent.

IS AN EMERGENCY CONTRACTOR REQUIRED?

- Contact the project leadership team, who will contact the relevant historic authority to report the finding and advise on how to proceed.

REPORT THE INCIDENT

- Ensure that a member of the Site Management Team and Environmental Advisor is aware of the incident.
- Any interaction with Historic Assets must be reported in line with project requirements.
- Also report in line with any Client-specific requirements.

MITIGATE

- Local Authority Archaeology dept / Historic England / Historic Environment Scotland will provide advice on how to proceed.
- No works including rectification must be carried out until consent has been established.

Issue no.:	3	Date:	May 2023	Parent document:	E03 Environmental Protection and Incident Response		
Approved for IMS:	IMS Manager	Document owner:	CR Director	Workspace file:	n/a	Page 7 of 7	