

Keeping you informed

Operations at Third Energy's KM8 well

October 2017

Hydraulic fracturing is set to start at Third Energy's Kirby Misperton site in the coming weeks. The Environment Agency (EA) will be active in regulating the site during operations and will provide you with updates of our work.



Site walkover, monitoring for methane

Our role

We issue environmental permits that set standards that operators must adhere to in order to minimise their impact on the environment and the local community. We issued the required permits to Third Energy for their site at Kirby Misperton in April 2016 after extensive consultation. These permits include requirements to produce plans to manage extractive waste and to control emissions from regulated activities. Third Energy has submitted these plans to us and, after requiring them to make some improvements we have now approved them.

We regulate operations in a variety of ways, including proactive site inspections which can be unannounced. We have a comprehensive regulatory plan ready for the start of hydraulic fracturing operations at the KM8 wellsite in Kirby Misperton. This includes audits, which will be both on site and desktop, of the control of emissions, the groundwater monitoring and the disposal of any waste, amongst other activities.

Where an operator is not complying with their permit, we will take action to secure compliance. This can take the form of advice, enforcement notices and ultimately, legal action or revoking the permit. We also respond to reports of pollution from members of the public.

Keeping you informed

If you would like to receive emails from us during operations please contact us at yorkshireoil&gas@environment-agency.gov.uk

We will only contact you about this site and will not share your details with any third parties.

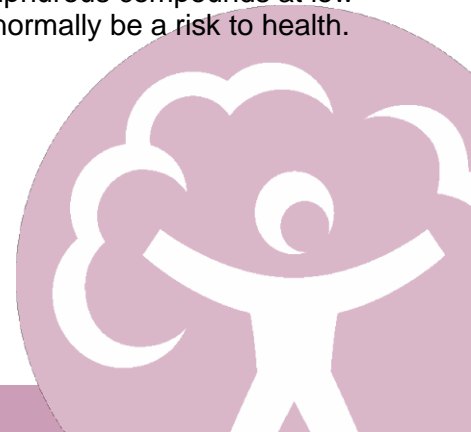
We have set up a page on Citizen Space to regularly update on information from our audits and site inspections and reports from the operator. <https://consult.environment-agency.gov.uk/onshore-oil-and-gas/third-energy-kirby-misperton-information-page/>

Reports of odour

On 17 October several of the regulatory bodies were contacted by members of the public reporting that odour from the site was detectable in Kirby Misperton.

We carried out a joint investigation of these reports with Ryedale Environmental Health Officers visiting Kirby Misperton village. We found that the source of the odour was most likely to be from maintenance the company were carrying out when cleaning a tank.

Information on site, viewed as part of an unannounced inspection by the Environment Agency, did not indicate any venting or escape of gas. Public Health England have spoken to local health specialists and our collective conclusion is that the odour was likely to be due to the release of sulphurous compounds at low levels which would not normally be a risk to health.



Regulation of the KM8 site

Our officers visit the site regularly to assess compliance with the permit. Site inspections will continue during each stage of operations.

We have installed a mobile monitoring facility at the site to monitor air quality. This is in addition to the operator's monitoring. Results will be shared on the Citizen Space webpage.



Monitoring air quality



Water quality sampling

Typical regulatory activities include;

- **Pollution prevention inspections** to check; leak detection and fugitive emissions, on site containment measures, noise and odour from permitted activities and emergency plans
- **Waste inspection checks;** through audits against the agreed Waste Management Plan, inspection of waste handling & storage and waste disposal routes for Third Energy & associated permitted sites receiving waste
- **Monitoring** - continuous ambient air quality monitoring using the Mobile Monitoring Facility located at the site and via officers carrying out walkovers of site to monitor methane levels
- **Monitoring audits** - calibration, maintenance, monitoring methodology, calculations & reports to compare against baseline results and check against agreed Emissions Monitoring Plan and Hydraulic Fracturing Plan

Contacting us



RYEDALE
DISTRICT
COUNCIL



Environment Agency

The Environment Agency runs a 24-hour incident hotline. You can use this number to tell us if the site is causing pollution.

Our hotline number is **0800 807060**

North Yorkshire County Council

To report issues relating to compliance with planning conditions including traffic, noise, dust and light pollution please e-mail the team at km8application@northyorks.gov.uk.

Ryedale District Council

Most matters are covered by the Environment Agency and the County Council however Environmental Health Officers can be contacted at specialistenvironment@ryedale.gov.uk

Health and Safety Executive

Safety on the drilling site, including well integrity, is regulated by the Health and Safety Executive.

<http://www.hse.gov.uk/contact/concerns.htm>

Oil and Gas Authority

The Oil and Gas Authority regulate seismic risks from hydraulic fracturing through a traffic light monitoring system. They can be contacted at

oga.correspondence@ogauthority.co.uk.

Public Health England

Public Health England work with North Yorkshire County Councils public health team. They have an advisory role on the potential public health impacts of exposures to chemical and radioactive pollutants as a result of the shale gas extraction process.

shale.gas@phe.gov.uk