

# Keeping you informed York Flood Alleviation Scheme

We are dedicated to better protecting 2,000 properties in York from flooding. The aim of this newsletter is to update you on progress with our schemes and inform you of upcoming public events.

## Clifton Ings Barrier Bank Scheme gets going

### Announcing start of construction

We are happy to announce that earlier this month, works begun at Rawcliffe Meadows as part of our Clifton Ings Barrier Bank Scheme. Over the course of these works we will be:

- ✦ Raising the height of the existing barrier bank and extend it at both the northern and southern end.
- ✦ Widening the 'footprint' of the bank in order to reduce the gradient of the slope on the river side and so reduce the risk of bank slippage in the future.
- ✦ Installing a new pumping station within the barrier bank in order to control water levels in Blue Beck storage lagoon.

This will provide a high standard of protection against future flooding, benefitting 135 homes. It will also reduce the risk of flood water spilling on to Shipton Road, keeping an important transport route into the city open and protecting local businesses as well.

Our contractors, BAM Nuttall, are now on site creating a new access point from Shipton Road and installing a temporary compound in what is known as the cornfield. We will also build a road for construction vehicles so that the main phase of earthworks can begin early next year. In addition, in November we will start building a new section of the Sustrans track, in preparation for the diversion of the old one once work starts in Rawcliffe



*Figure 1. Works taking place at the Cornfield establishing our compound. Taken 24/09/21*

Meadows in 2022. This work will continue over the winter until spring next year.

We recognise that Clifton Ings is an important and much loved green space, used by many people living and working in York as well as visitors from outside the city. We have designed this scheme very carefully to minimise impacts for visitors and residents. Throughout the construction period, most of the site will remain open and the main

access routes along its length, from the northern to southern end, will still be usable.

This new path will be built to a high standard, surfaced and will be wider than the existing track on the Ings. The design for this stretch of the Sustrans route has been approved by Sustrans officers. We are really pleased that keeping the diversionary Sustrans route on the Ings itself means that there won't be a need to divert cyclists and pedestrians off the site and onto the main road. Our intention is that this diversion will become permanent after the scheme is completed, keeping cyclists on the new improved track.

Before starting construction, we have developed plans to minimise the impact of our work across the site and especially in Rawcliffe Meadows Site of Special Scientific Interest (SSSI) where rare meadow grassland species and the critically endangered Tansy beetle are found. In order to protect these species, we will carry out a programme of habitat restoration, mitigation and management. We have worked closely with Natural England, City of York Council's ecologist, and the Floodplain Meadows Partnership to work out the complex sequence of actions needed to ensure that these species continue to thrive on the site after construction is completed. This includes translocation (moving individual plants to a new site on Rawcliffe Ings), green hay spreading, seeding and planting.

We have also carried out extensive surveys of other plants and wildlife on site, including a Phase 1 Habitat survey along with surveys for tansy beetles, water voles, great crested newts and possible bat roosts.

## Museum Gardens works

Last month, we began our works in the Museum Gardens to raise the height and extend the flood embankment that sits behind the Hospitium. We aim for these works to be complete early 2022.

The work area in the Museum Gardens has been securely fenced off for public safety. The main access points into the Gardens from Marygate and Museum Street remain open to the public and unaffected by the works.

Ahead of this work, York Archaeological Trust carried out excavations to check for archaeological remains in the areas where embankment building is due to take place. The dig focussed on areas thought to be previously undisturbed by earlier works in the gardens. The Trust will also be on hand throughout the works to advise and check on anything that may later be uncovered.



*Figure 2. Works taking place on the Museum Gardens embankment. Taken 23/09/21*

The embankment in the Museum Gardens is being raised by up to 700mm and the process begins by excavating 600mm into the ground. The new embankment is then gradually built up using a series of layers of compacted clay which ensure a good connection with the existing ground and provides a watertight seal. The process is then repeated until the final flood defence height is





reached. The embankment is then completed with a layer of topsoil ready for seeding.

After such extensive work, we know it will take a little time for things to settle down and for the area to become green again. We have been working in partnership with York Museums Trust (YMT) to develop a landscaping plan for the areas that have been affected by our work. This will include -



### Apple tree orchard

Apple trees will be planted in the area behind the Gardeners shed to create a mini-orchard. YMT aim for a more 'natural' look and feel for this area with longer grass to support biodiversity in the Gardens and provide a pollinator-friendly naturalised area for wildlife.



### Reseeding of the embankment

Most of the new embankment will be reseeded with grass to tie in with the surrounding area. However a terraced section behind the Hospitium will be created as part of the measures to protect the True Service Tree. Planting will incorporate a show of bulbs and perennial planting enhancing this area through the late spring and summer season and uses a number of pollinator-friendly plants.



### Planting on the Riverward side of the embankment

The area between the new embankment and the Serpentine path will be planted with a wide range of plants either side of the path. These will include some that will be new to The Museum Gardens collection. The plants have been carefully selected to suit the conditions and provide a variety of seasonal interest, colour and texture to inspire visitors.

## Clementhorpe Road Closures

In May, to accommodate our works taking place at Clementhorpe, we partially closed a section of Terry Avenue from Skeldergate Bridge, to north of Clementhorpe Road. At the beginning of July, this closure was extended southwards, up to Dukes Wharf entrance. This road closure will be in place for a total of 12 months, and we expect to be able to reopen access to the public from May 2022.

The closure and disruption caused is regrettable. However, it is necessary because of the work we will be doing in the area, which involves very complex underground intervention. This includes a 240-metre-long, 6-metre-deep trench that will be dug, in stages, along Terry Avenue, to install a semi permeable barrier. This work will prevent flood waters from passing underneath above-ground flood defences and flooding low-lying areas of Clementhorpe. The road closure is necessary to protect the public whilst this work is carried out.

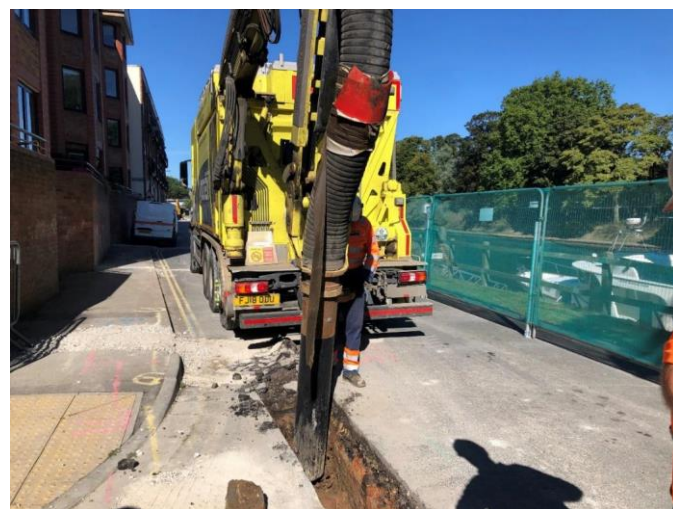


Figure 3. Trial Hole works on Terry Avenue. Taken 24/09/21

To allow vehicle access to premises along Terry Avenue the Byway has temporarily been reinstated as a highway. We have informed residents in the area and put in place appropriate diversions for cars and cyclists. Access for cars to the caravan site and Roomzzz Hotel is via Butcher Terrace.

We appreciate that this work creates inconvenience for York residents. However, to build flood defences in such a densely populated urban location is difficult, and it has been necessary to restrict access. These diversion routes have been



developed after a lengthy period of communication and consultation with the local community to minimise the disruption caused by this work. They have also been approved by an independent road safety auditor and City of York Council.

For news and updates on any diversions, please follow us on Facebook ([www.facebook.com/YorkFAS](https://www.facebook.com/YorkFAS)) or twitter (@EnvAgencyYNE)

We have an engagement cabin open to the public, located on the edge of the construction compound for the Clementhorpe scheme, close to the south entrance to Rowntree Park. On Mondays and Tuesdays it is staffed by a member of Bentleys, our contractor, to answer questions about the Clementhorpe scheme. However, on Thursdays it is staffed by a member of the Environment Agency, who is available to chat about any of our schemes across York. If you would like to chat about our schemes, please pay us a visit on a Thursday and we will do our best to help.



*Figure 4. Our Engagement Cabin at the South Entrance of Rowntree park*

Once completed, the Clementhorpe section of this flood scheme will provide improved flood protection to 135 homes and businesses.

## Delays to our Lendal Bridge Scheme

You may have noticed that our works replacing the floodgates at Lendal Bridge are taking longer than we had originally planned. This delay of the scheme has occurred due to conditions that we had been unable to predict.

Our construction team found a large concrete slab directly over two high voltage power cables owned by National Power Grid. Whilst we knew that the cables were there and had plans to work around them, we were not aware of the concrete slab, which needed removing before we could install the foundation and frame for the new floodgate.

For safety reasons National Power Grid needed to be on-site for this slab removal work to coordinate the switching of power between cables. This took time to arrange due to the processes NPG needed to follow to schedule switching off the cables, ensuring that the adjacent power supply remained active, supplying power over to half of York.

Because the delay has taken the project beyond the original end date for the road closure, we applied for an extension to enable us to carry out this necessary work. The road closure has now been extended to 22 October 2021.

The concrete slabs that caused the delay have now been removed and we are progressing well with the remaining construction work. The footpath is scheduled to reopen on 22 October 2022.

We apologise for any inconvenience that the delay in this scheme has caused, and thank you for your patience.



## What's happening in our other flood cells?

### Westfield Beck (F12)

We are carrying out some more appraisal work to find the best way to reduce flooding for this flood cell. We are continuing discussions with Yorkshire Water regarding their sewer infrastructure and CYC regarding surface water flooding.

### Lower Bootham (B11)

Network rail embankment works have been completed earlier this summer. Works are continuing to test glass panels on Almyr Terrace. Works are currently scheduled to be completed January 2022.

### Foss Storage Area (F8, F10, F11)

CYC and Ryedale District Council approved our planning applications towards the end of 2020. This will be a 2 year project that will protect 490 properties.

### South Bank (B8)

We are working through getting in touch with eligible properties to finalise our recommendations.

### Foss Basin (F1)

Planned works at St George's field car park are to raise the height of walled defences. These works, to be carried out in 2022 will include temporary/demountable defences across Tower Street.

### Tang Hall and Osbaldwick Becks (F4&F5)

Due to escalating costs, we are unable to go ahead with the 'open culvert' scheme that had been originally planned. We are investigating other options.

### Marygate (B12)

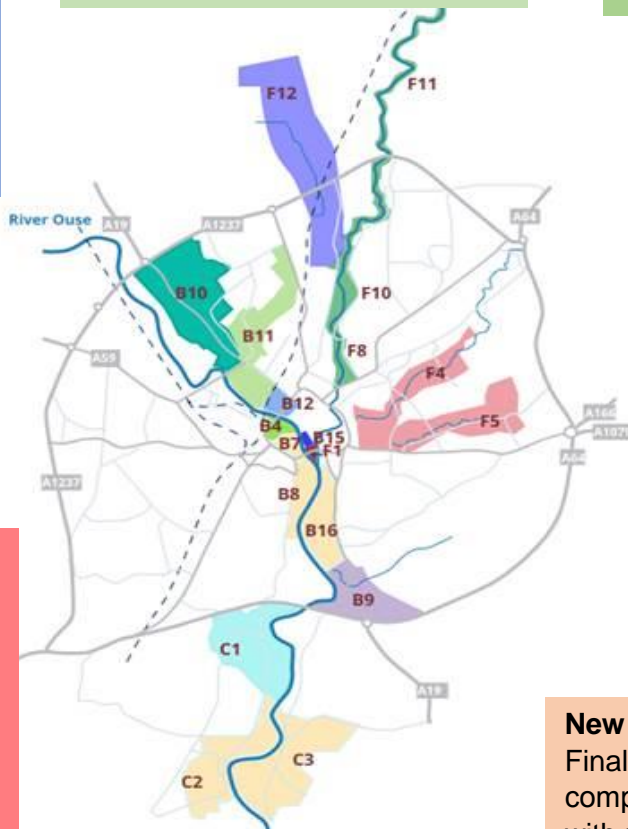
Works are continuing with raising the flood wall from Scarborough Bridge to Earlsborough Terrace.

### New Walk (B16)

Final installations are being completed, and we're getting in touch with properties requiring follow ups. Please do get in touch if you believe you have been missed.

### Bishopthorpe (C1)

Works are continuing on building a new flood wall with underground piling, and a new floodgate on Chantry Lane.



### Property Flood Resilience (B7, B11, B12, B15, C1, C2, C3)

Under the York Five Year Plan PFR Scheme we are offering a free survey to eligible properties. The survey will identify the suitability of the building for PFR and recommend a list of measures bespoke to that property. For those who wish to proceed with the recommendations, we are offering a grant of up to £7,500 to install resistance measures to their properties.

We have reached out to properties potentially eligible for PFR, inviting them to fill in a questionnaire to help us establish whether they are suitable for our PFR measures. Thank you to all who have responded so far, we are currently securely holding this data and will be processing it shortly. If you haven't received an invitation to complete the questionnaire but believe you may be eligible, or if you have and require assistance in completing it, please do get in touch via [yorkfloodplan@environment-agency.gov.uk](mailto:yorkfloodplan@environment-agency.gov.uk)





## Do you want to know more about about PFR?

### Floodmobile – On the road to COP26

COP26 takes place in Glasgow 1-12 November 2021. Flood Re with Mary Dhonau (Flood Mary) are taking the Floodmobile on tour to some flood hotspots in the UK.

The objective of the tour is to highlight the need for adaptation and flood resilience measures. Whilst 'Net Zero' is critically important, it is adaptation and resilience that should now take centre stage.

Starting in Worcester on the 25 October the Floodmobile will travel to Glasgow via York and Carlisle arriving in Glasgow on Thursday 28 October for two days. This week also marks the 21<sup>st</sup> anniversary of Mary Dhonau's first flood campaign, which started in Worcester.

We are expecting the Floodmobile to be in York on Tuesday 26<sup>th</sup> October. Members of the team will be around to answer your questions. Location details to follow – please keep an eye on our social media or get in touch



Please click on the image above to find out more about the Floodmobile.

## Are you Winter Ready?

Remember that even protected properties are still at risk of flooding

The City of York is largely covered by our Flood Warning system. This is a free service which gives notice of when flooding is expected so that you can be prepared or take any necessary action. To sign up for Flood Warnings please:

Call **Floodline on 0345 988 1188** or visit [www.gov.uk/sign-up-for-flood-warnings](https://www.gov.uk/sign-up-for-flood-warnings)



**FLOOD ALERT**



**FLOOD WARNING**



**SEVERE FLOOD WARNING**

Find out your risk of flooding, and see what warnings are in force at any time by visiting

[www.gov.uk/check-flood-risk](https://www.gov.uk/check-flood-risk)

You can find useful tips on what to do should flooding threaten your home and valuables by visiting <https://floodsdestroy.campaign.gov.uk>



To sign up for updates on any of the flood schemes mentioned in this newsletter, please email us at [yorkfloodplan@environment-agency.gov.uk](mailto:yorkfloodplan@environment-agency.gov.uk) and include the scheme's name or location in the subject of the email.

