

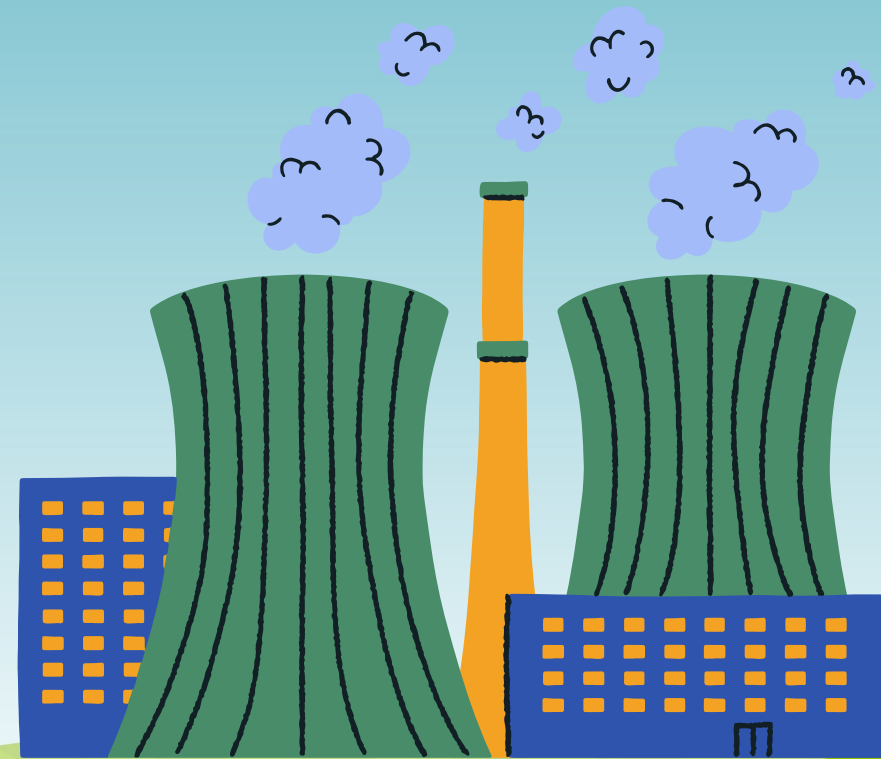
# How our regulations protect people and the environment

We ensure that carbon capture and utilisation in England is conducted in a way that **protects people and the environment**

Operators will need an environmental permit under The Environmental Permitting (England and Wales) Regulations 2016

We only issue permits to organisations who can demonstrate they can meet all of our requirements and can provide a high level of protection to people and the environment

## Carbon Capture



Our regulatory role is focussed on the operation of the plant and ensuring that any environmental risks arising from the operation are fully assessed, understood and minimised

We work with other UK regulators to ensure that risk to the environment or human health is minimised

