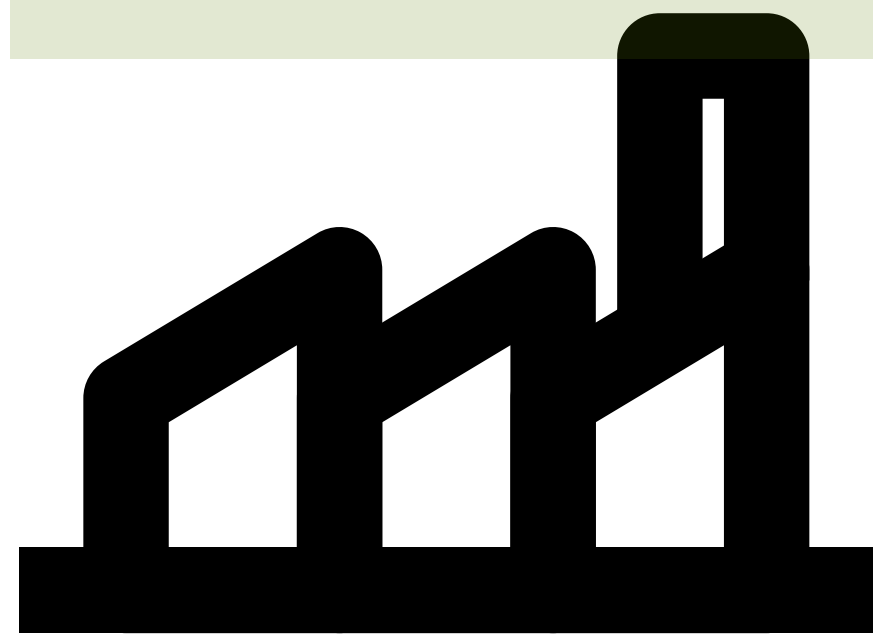


Carbon capture process

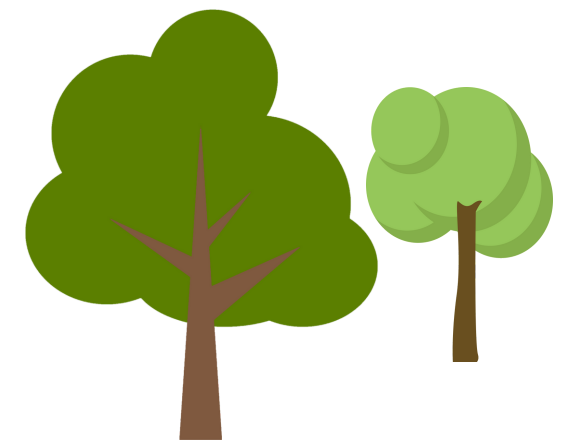
Power Plant

Waste gases containing CO₂ leave the power plant.



Stripper

The chemical containing the CO₂ is heated in a re-boiler which reverses the reaction, separating the CO₂ from the chemical.

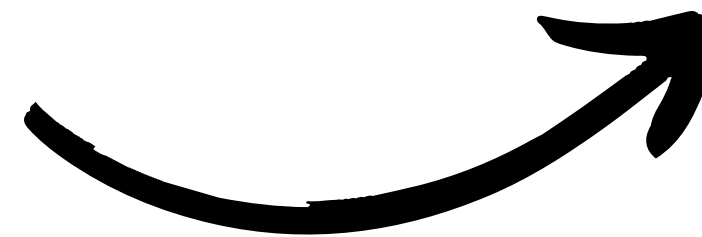
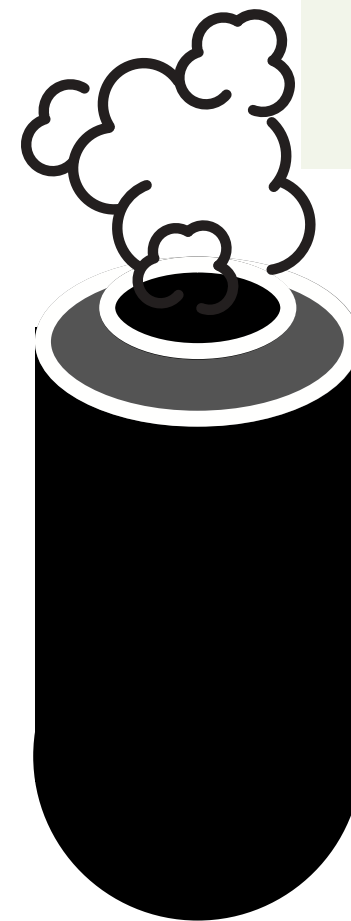


The chemical is re-circulated back into the carbon capture system.



Absorber tower

Chemicals are used to remove the CO₂ from the waste flue gases. CO₂ depleted gases are released to the atmosphere.



Waste flue gases are cooled before entering the absorption (CO₂ capture) tower.



The CO₂ is transferred via pipeline for permanent storage under the North Sea.

