

## Walleys Quarry weekly update – 01 July 2022

The Environment Agency has prepared this weekly update to help the community of Newcastle-under-Lyme and the wider area keep informed about developments concerning its regulation of Walleys Quarry Landfill.

Walleys Quarry Ltd is the operator of the landfill site and it alone is responsible for the hydrogen sulphide emissions escaping from the site.

The Environment Agency is the environmental regulator. We require Walleys Quarry Ltd to meet its environmental obligations and resolve the ongoing odour issues at the landfill as quickly as possible.

### News in brief – 01 July 2022

#### Regulatory activity

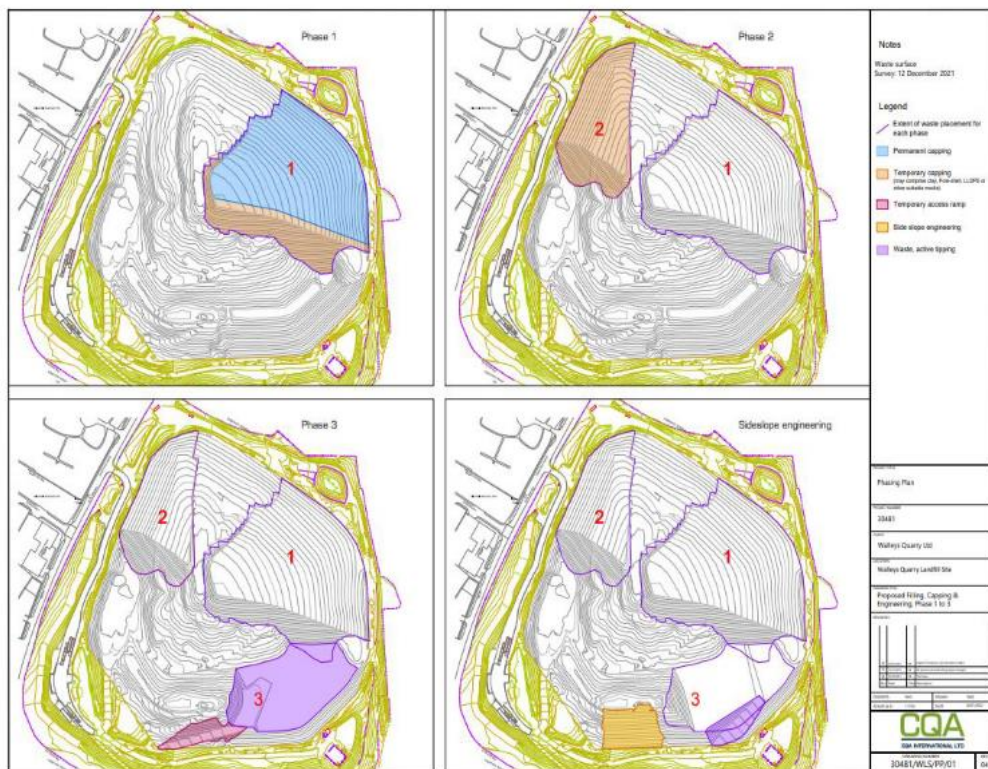
Officers have continued to carry out regulatory work at Walleys Quarry in Newcastle Under Lyme to ensure effective delivery of our plan to contain, capture, and destroy landfill gas from the site.

The temporary (clay) capping work on Phase 2 on the north-west corner of the site is now complete. Progress on the permanent (geomembrane) capping of Phase 1 on the north-east corner of the site, has slowed recently. Walleys Quarry Ltd indicated this work was due to be completed in early August, but it has told us this had been impacted by the unavailability of membrane welding teams and reduced waste input over the past 4 weeks. We are pressing Walleys Quarry Ltd to confirm when it expects this work to be completed.

The average gas collection value for the last nine weeks remains steady at approximately 3000 m<sup>3</sup>/hr. There have been only small fluctuations in extraction rates as the extraction is balanced.

Four new deep wells are planned for installation in Phase 3 in July 2022. This additional capacity to capture gas (both current and anticipated) should lead to lower emissions of landfill gas to ambient air and reduce the negative experience of odour in the community.

Phases 1-3 of are marked on the drawing below and available to download [here](#).



### Facebook live session

Unfortunately, due to illness we had to postpone this month's Facebook Live event. We are sorry if this has caused any inconvenience.

We want to respond to questions posed as soon as possible. In order to do this, we will record shorter sections and upload them to the Facebook group over the next few days. We are aiming to have this completed by the evening of Monday 04 July 2022.

You can join the Facebook group and watch the recording from the first Facebook LIVE session [here](#)

We have been asked about how, we as the Environment Agency, use social media as a tool for communication. You can read more [here](#)

### Reporting odour

It is important that you continue to report odour to us. Reports from local people, along with our regulatory visits and monitoring from our mobile monitoring facilities help to create a picture which informs our enforcement and regulatory approach.

The easiest and quickest way to make a report is via GOV.UK at: <https://report-walleys-quarry-smell.service.gov.uk/>

If you do report odour to us via our incident hotline, please be courteous to our staff. They are working to deal with your reports as efficiently as possible.

### Latest hydrogen sulphide levels

Our Ambient Air Monitoring Team continues to check air quality around Walleys Quarry landfill. It does this through a network of mobile monitoring stations (MMFs) that are positioned in

communities around the site. These check for levels of hydrogen sulphide and methane, which are indicators of odour pollution.

The chart below contains a summary of the raw data collected from our ambient air mobile monitoring facilities (MMFs) in the period 20 - 26 June 2022. They were slightly higher than levels seen at two locations last week, and the same or lower at the other two.

MMF ID & Location	% of time the monitoring location recorded H <sub>2</sub> S above the WHO annoyance guideline level %	Change
MMF1 Silverdale Cemetery	0.0	— on previous week
MMF2 Silverdale PS	0.9	▲ on previous week
MMF6 Fire Station	0.3	▼ on previous week
MMF9 Galingale View	15.5	▲ on previous week

*It is important to note that this is raw data and may change slightly as results are verified.*

It's important to note that there will be short term fluctuations in the concentrations of hydrogen sulphide leaving the site. The causes can include factors such as the impact of improvement works being carried out on site and changes in the weather. Concentrations of landfill gas emissions generally increase during colder weather and still wind conditions. With less ability for the landfill gas emissions to disperse, there is a greater potential for these emissions to cause an odour nuisance on the local community.

By contrast, in warmer weather the gases are naturally more diluted due to higher temperatures and rising air. This means improvements from measures implemented at Walleys Quarry Landfill to reduce odour could be less noticeable around this time of year. However, it is important to note that despite temporary increases, the overall trend in the levels of hydrogen sulphide concentrations in the ambient air continues to reduce.

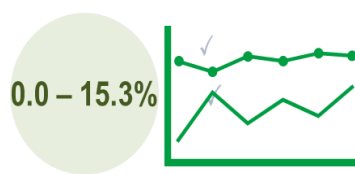
### Odour Reports

In the week 20 to 26 June 2022, the Environment Agency received a total of 210 odour reports from local people. This is a decrease compared to the previous week. The peak day was on Tuesday 21 June, when we received 59 reports.



210

Number of odour reports/complaints to the Environment Agency 20 - 26 June 2022



0.0 – 15.3%

Hydrogen Sulphide 30 minute average odour annoyance: % of time above WHO guideline level 20 - 26 June 2022



Below

H<sub>2</sub>S

Hydrogen Sulphide Level. 24 hour World Health Organisation guideline to protect against short term health effects

### Correspondence

Other than by means of the Facebook Group mentioned above, we are unable to answer questions through social media. If you have a question you can [email](#) us.

### Other sources of information

UK Health Security Agency public health messages and advice about the effects of odours from Walleys Quarry landfill are available online via Staffordshire County Council's website: [Frequently](#)

[asked questions about the health effects of odours and emissions from Walleys Quarry: - Staffordshire County Council](#)

Walleys Quarry Ltd website: <https://walleysquarry.co.uk>