



4. EXAMPLE INTERVENTIONS

EXAMPLES OF HOW THE VISION COULD APPLY AT A SITE SPECIFIC SCALE

4. EXAMPLE INTERVENTIONS

4.1 INTERVENTION TYPOLOGIES & CASE STUDIES

TYPOTOLOGIES

Following the development of big, moves, small moves, and open space interventions it was considered how these could be applied to a number of case studies. Firstly Gillespies determined six typologies, as follows, which could be applied to a number of locations in the study area:

INFORMAL RIVERSIDE OPEN SPACE

This typology applies to areas of existing green space, through which the watercourse runs, in more suburban areas. The space is currently used as flexible open space with amenity grass areas and parkland tree planting.

CONSTRAINED RIVERSIDE OPEN SPACE

This typology applies where there is wooded public open space adjacent to the watercourse.

URBAN REGENERATION AND RIVER RE-NATURALISATION

This typology applies where the river runs through the urban core of Birmingham which will be subject to large areas of future changes and redevelopment.

GREEN STREETS

This typology applies where the interventions in the watercourse itself may be constrained but there are streets running adjacent which could benefit from greening and water management.

URBAN OPEN SPACE RIVER RE-NATURALISATION

This typology applies in areas of existing green space through which the watercourse runs, where the watercourse is constrained in an engineered channel.

URBAN RIVER REVEAL

This typology applies where the watercourse runs through the urban core of Birmingham, is constrained in an engineered channel, and has heritage sensitivities adjacent such as listed and vernacular buildings.

CASE STUDIES

Eight case study sites were selected to provide an example of how the opportunities set out in the vision could be applied across the typologies. The case study sites were:

INFORMAL RIVERSIDE OPEN SPACE

- Valley Parkway
- Weoley Hill Park
- Manor Farm Park

CONSTRAINED RIVERSIDE OPEN SPACE

- Merritts Brook Greenway

URBAN REGENERATION AND RIVER RE-NATURALISATION

- Rea Valley Urban Quarter and Beyond

GREEN STREETS

- Edgbaston

URBAN OPEN SPACE RIVER RE-NATURALISATION

- Calthorpe Park

URBAN RIVER REVEAL

- Digbeth

It should be noted that the concept designs for the case studies have been prepared as high level concept designs for the purposes of this vision document, and set out an idea for the way in which the design could come forwards. The ideas proposed are one representation of what is possible and are subject to further analysis, site survey, design, consultation and modelling work in order to progress.

Case study sites in blue are sites which have been identified by the Environment Agency for potential water attenuation to alleviate downstream flooding. As such the proposed designs account for areas of water storage during high flow events. Again it should be noted that this is high level work and assumption on indicative areas of water attenuation and subject to further modelling and design.

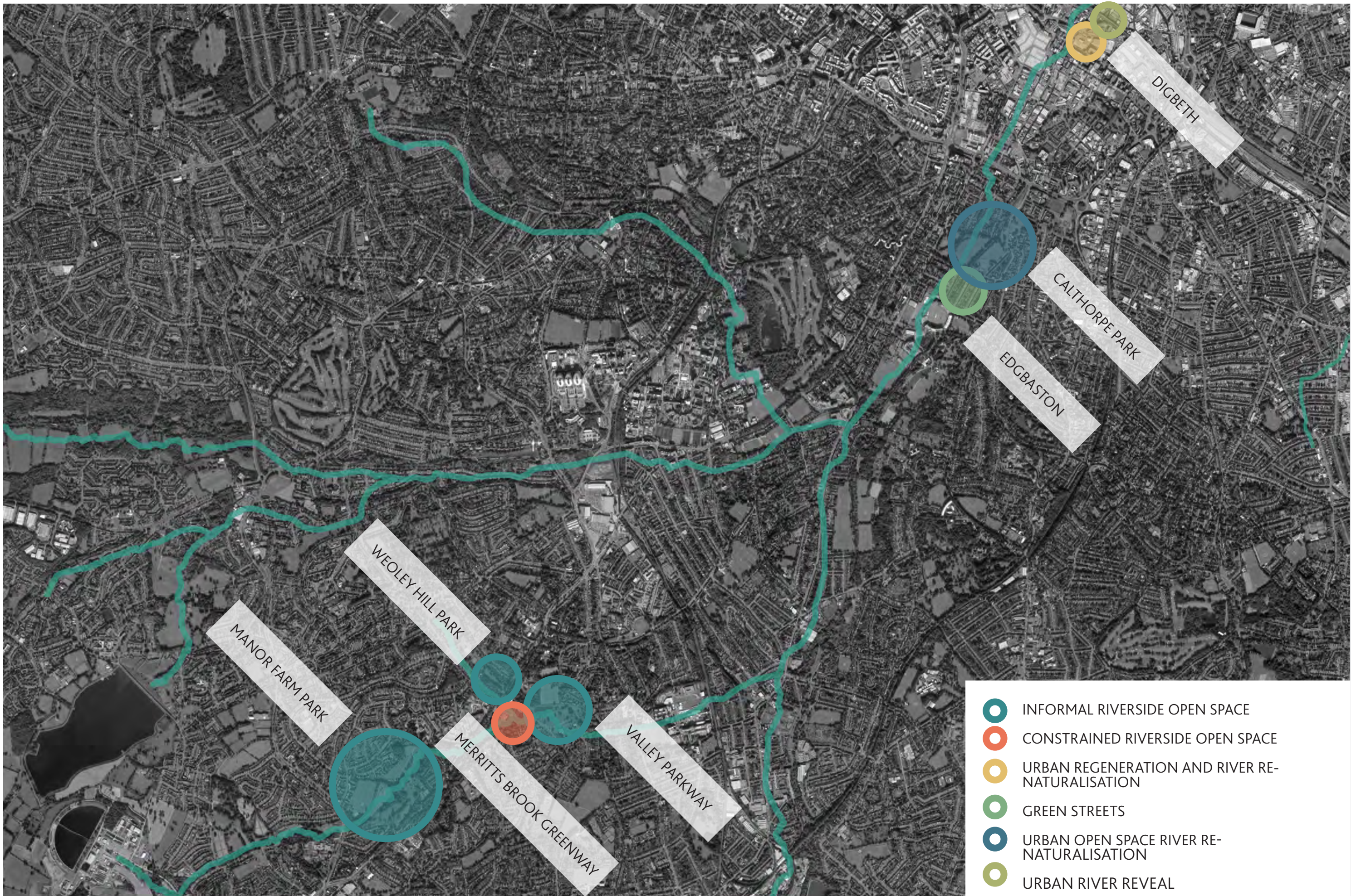


FIGURE 4.1: CASE STUDY LOCATIONS

4. EXAMPLE INTERVENTIONS: INFORMAL RIVERSIDE OPEN SPACE

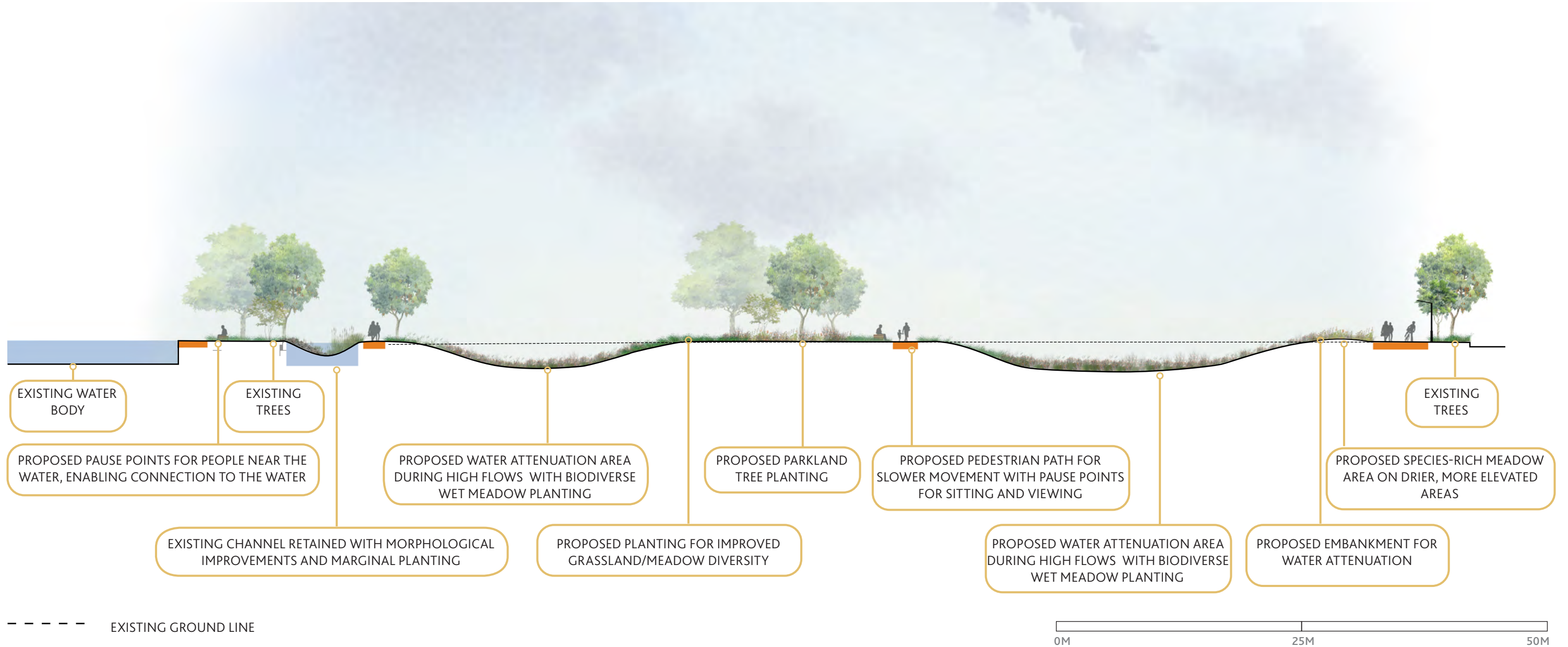
4.2 VALLEY PARKWAY



PHOTOS OF EXISTING CONDITIONS IN VALLEY PARKWAY

4. EXAMPLE INTERVENTIONS: INFORMAL RIVERSIDE OPEN SPACE

4.2 VALLEY PARKWAY: PRECEDENTS AND SECTION DETAIL



4. EXAMPLE INTERVENTIONS: INFORMAL RIVERSIDE OPEN SPACE

4.2 VALLEY PARKWAY: OPPORTUNITIES



4. EXAMPLE INTERVENTIONS: INFORMAL RIVERSIDE OPEN SPACE

4.3 WEOLEY HILL PARK



PHOTOS OF EXISTING CONDITIONS IN WEOLEY HILL PARK

4. EXAMPLE INTERVENTIONS: INFORMAL RIVERSIDE OPEN SPACE

4.3 WOLEY HILL PARK: SITE SUMMARY

SUMMARY

OPPORTUNITIES

1. Create visual or physical connection to the water for people, improvement bank profiles, and flow diversity of channel
2. Improve water management and create water/flood storage
3. Habitat and biodiversity improvements through planting
4. Add benches, seating and signage along pathway

CONSTRAINTS

- A. Existing levels close to that of watercourse levels
- B. Existing mature trees
- C. Proximity of residential properties

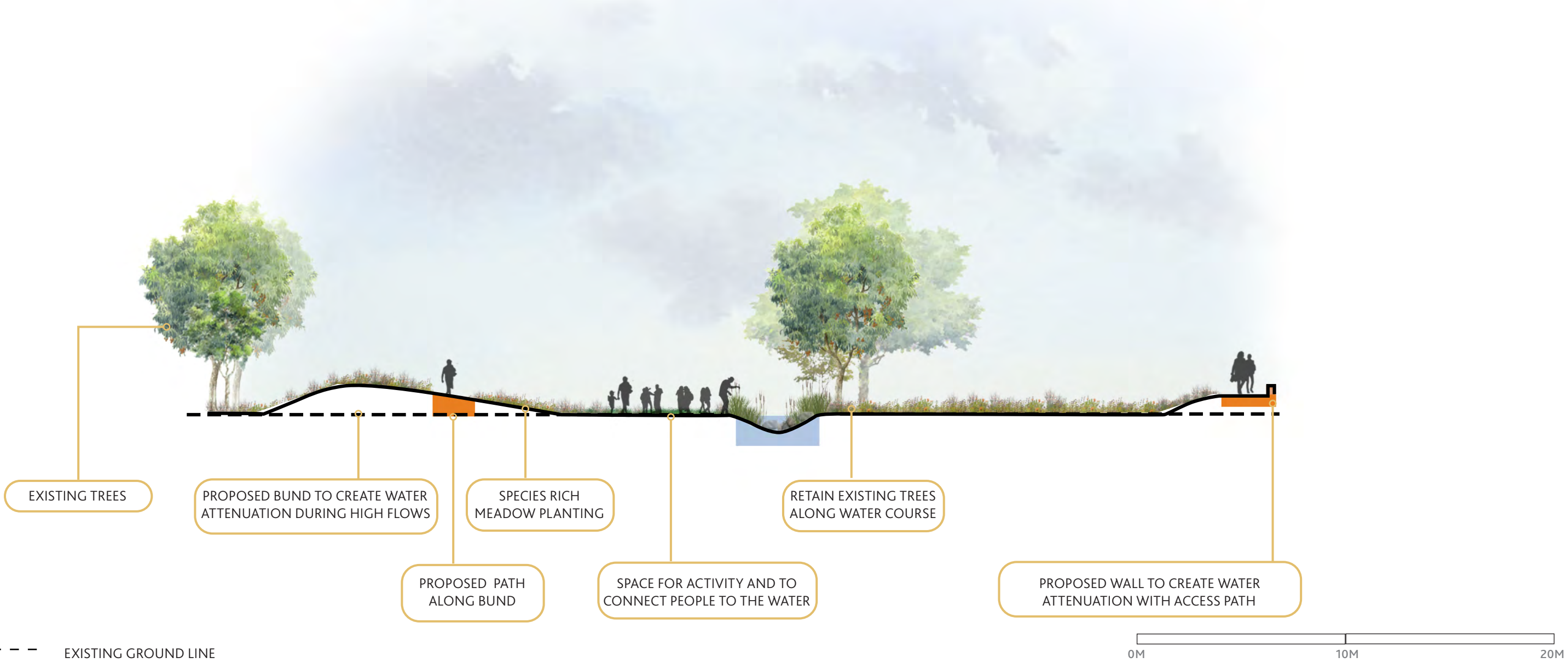


AERIAL VIEW OF WOLEY HILL



4. EXAMPLE INTERVENTIONS: INFORMAL RIVERSIDE OPEN SPACE

4.3 WEOLEY HILL PARK: PRECEDENT IMAGES AND SECTION DETAIL

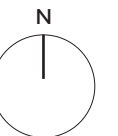


4. EXAMPLE INTERVENTIONS: INFORMAL RIVERSIDE OPEN SPACE

4.3 WEOLEY HILL PARK: OPPORTUNITIES



This design has been prepared as high level concept for the purposes of this vision document, and sets out one idea for the way in which the design could come forwards. It is subject to further analysis, site survey, design, consultation and modelling work in order to progress.



4. EXAMPLE INTERVENTIONS: INFORMAL RIVERSIDE OPEN SPACE

4.4 MANOR FARM PARK



PHOTOS OF EXISTING CONDITIONS IN MANOR FARM PARK

4. EXAMPLE INTERVENTIONS: INFORMAL RIVERSIDE OPEN SPACE

4.4 MANOR FARM PARK: SITE SUMMARY

SUMMARY

OPPORTUNITIES

1. Create visual or physical connection to the water for people
2. Improve water management and create water/flood storage
3. Integrate historic water course to water storage area
4. Integrate existing perched waterbody
5. Habitat and biodiversity improvements through planting
6. Add benches seating and signage along pathway
7. Tree planting
8. Nature play
9. Community growing

CONSTRAINTS

- A. Existing mature trees and woodland
- B. Existing levels
- C. Maintaining use and community access
- D. Perched water course
- E. Potential site of ecological importance

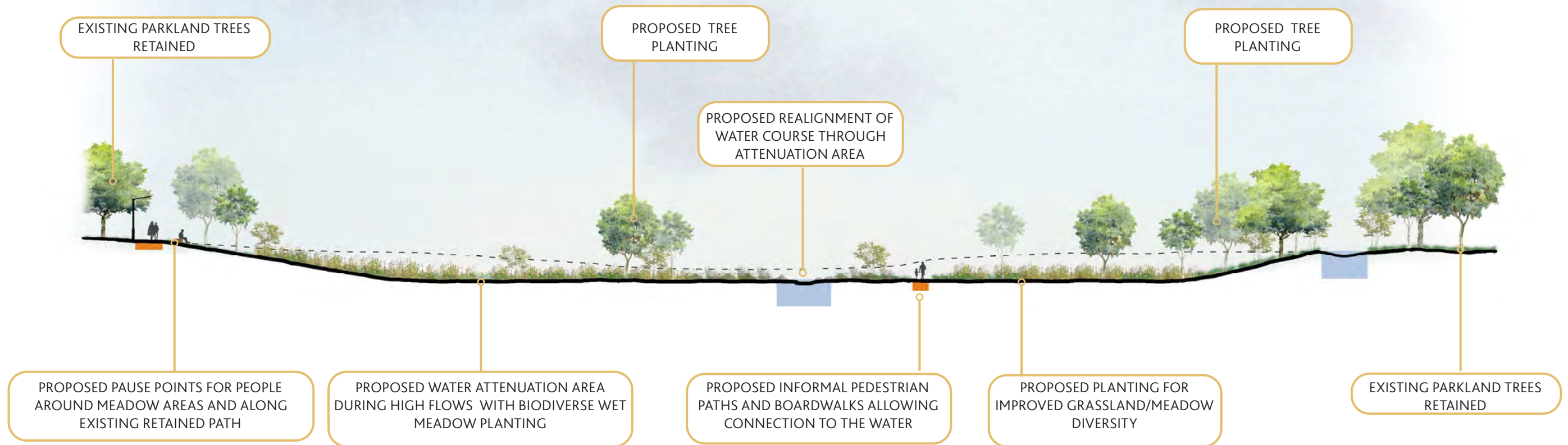


AERIAL VIEW OF MANOR FARM PARK



4. EXAMPLE INTERVENTIONS: INFORMAL RIVERSIDE OPEN SPACE

4.4 MANOR FARM PARK: PRECEDENT IMAGES AND SECTION DETAIL



--- EXISTING GROUND LINE

0M 25M 50M

4. EXAMPLE INTERVENTIONS: INFORMAL RIVERSIDE OPEN SPACE

4.4 MANOR FARM PARK: OPPORTUNITIES

