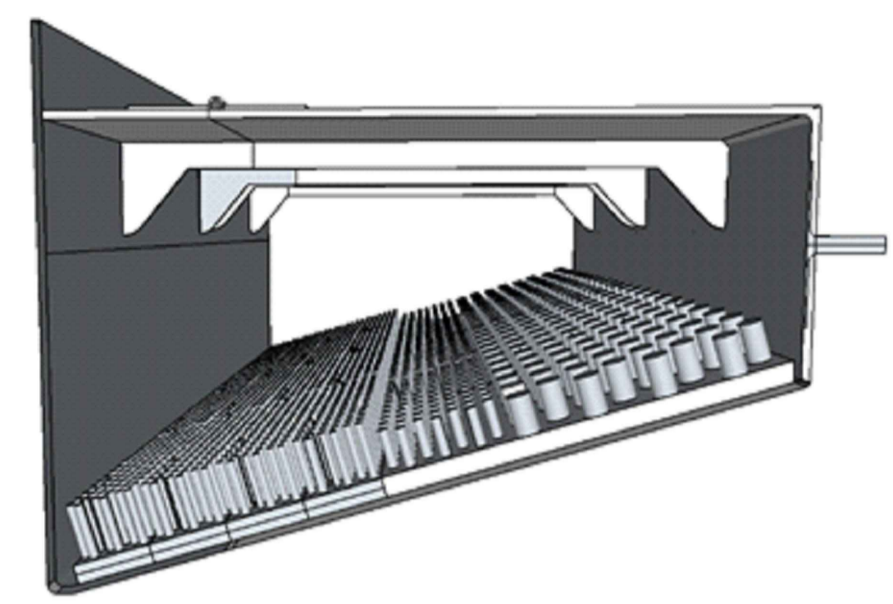


Eel Box

(Lap plates, supports, handels and self-closing latches omitted from visualisation)



Eel Box

(Lap plates, supports, handels and self-closing latches omitted from visualisation)

SAFETY HEALTH & ENVIRONMENTAL INFORMATION

In addition to the hazards/risks normally associated with the type of work detailed on this drawing, note the following risks and information. Risks listed here are not exhaustive. Refer to Designer's Risk Assessment and pre-construction phase plan.

CONSTRUCTION

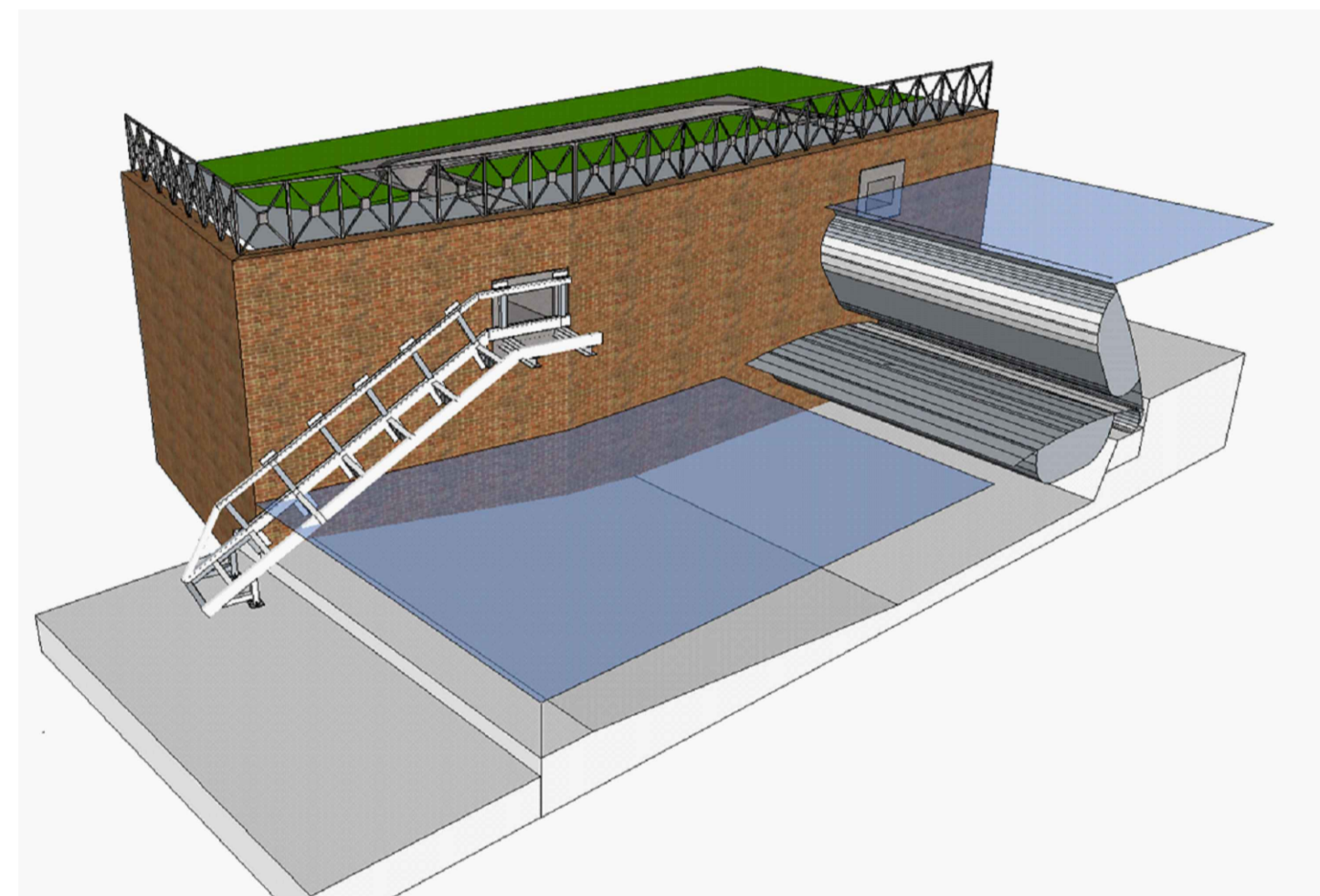
- C1** Managing flow & stage levels in River Avon / Severn
 - Monitor flow levels & flood warnings.
 - Check boated access / scaffolding platform for fixing & installation of wall units.
- C2** Managing flows over weir
 - Check adequacy of cofferdams over weir.
- C3** Risk of falls from height
 - Check adequate edge protection.
 - Check access provision to fit pre fabricated eel pass against river wall & wall reinstatement works at channel inlet & outlet.
- C4** Lifting
 - Check lifting facilities & constraints.
- C5** Interface with public & other site operations
 - Check adequate warning signs and fencing in place.
 - Check operation of the gate & emergency access is not hindered during construction.
- C6** Services
 - Check for services at weir & along access route.
- C7** Stability of Structures
 - Inspect & check existing fittings at the weir.
 - Assess condition of existing river wall during construction and fitting of eel pass.

NOTES:

- 1. DIMENSIONS:**
- Are in millimetres unless otherwise stated.
 - All levels are in metres to Site Datum.
 - Marked thus * or c. are approximate.

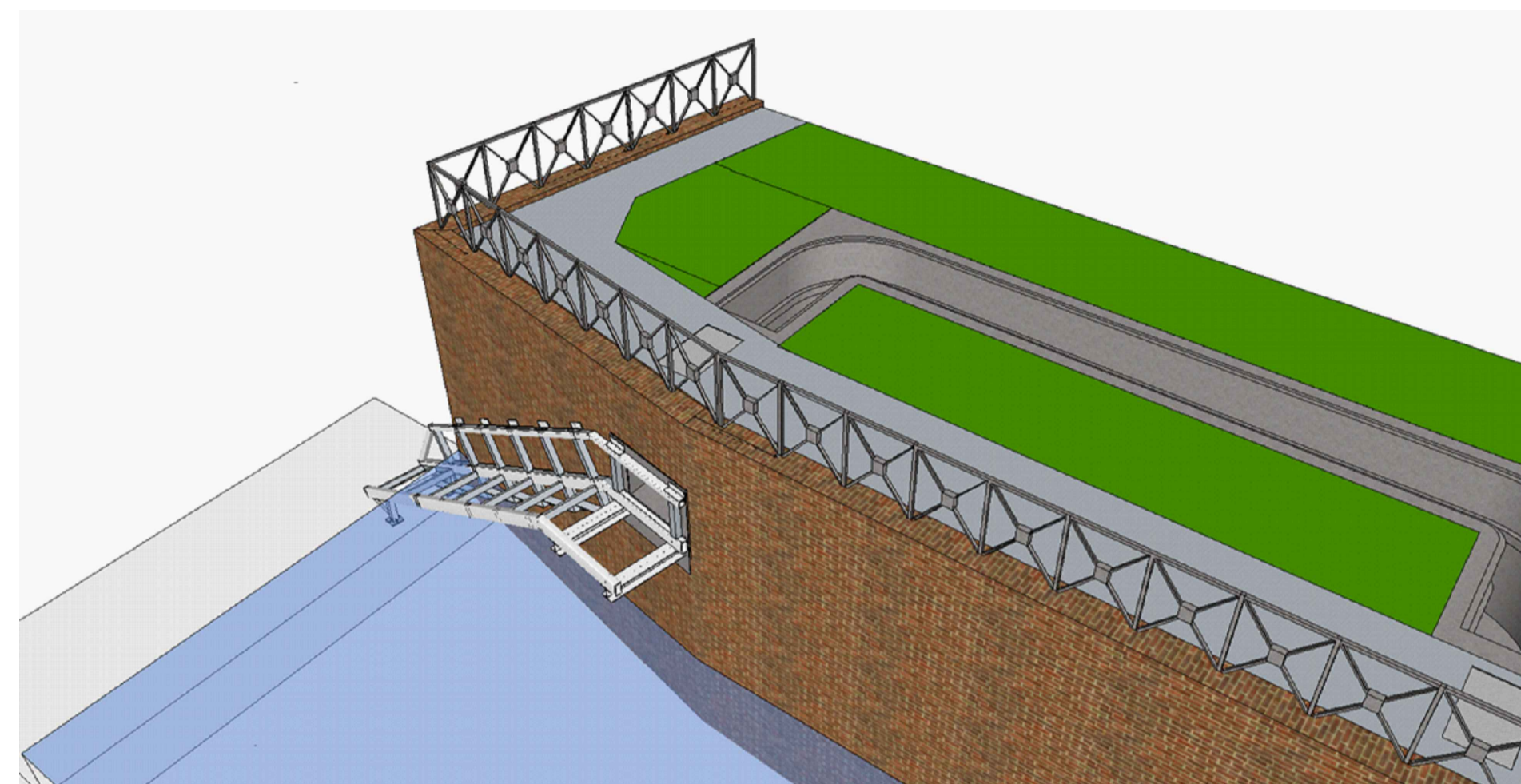
2. SPECIFICATION:

All works to be carried out in accordance with the Environment Agency Minimum Technical Requirements which shall be the Civil Engineering Specification for the Water Industry (CESWI). All technical requirements clauses apply unless stated as deleted, amended or augmented in accordance with the EA WEM Contract Works Information documentation.



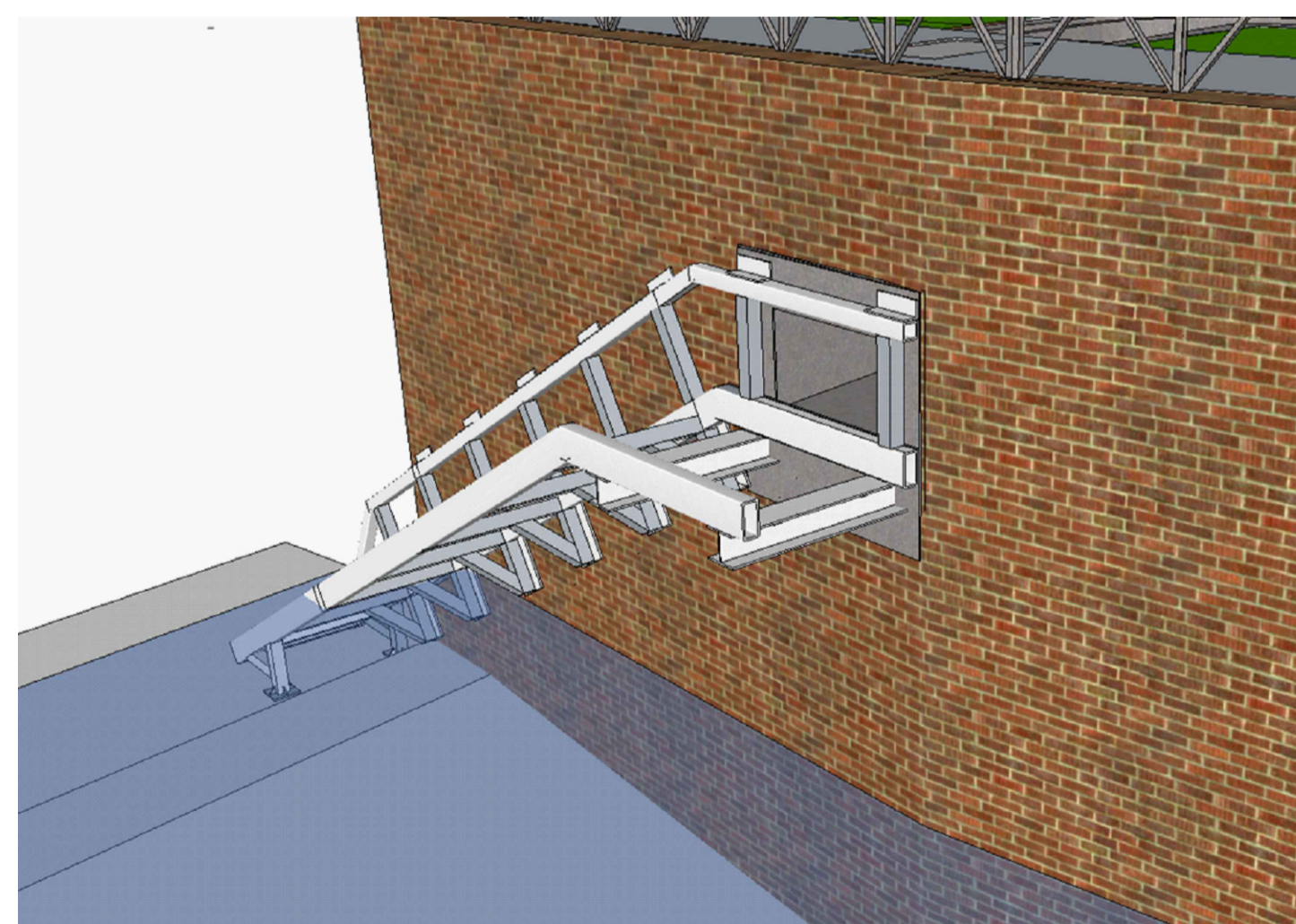
Gantry Cradle

(Eel boxes omitted from visualisation)



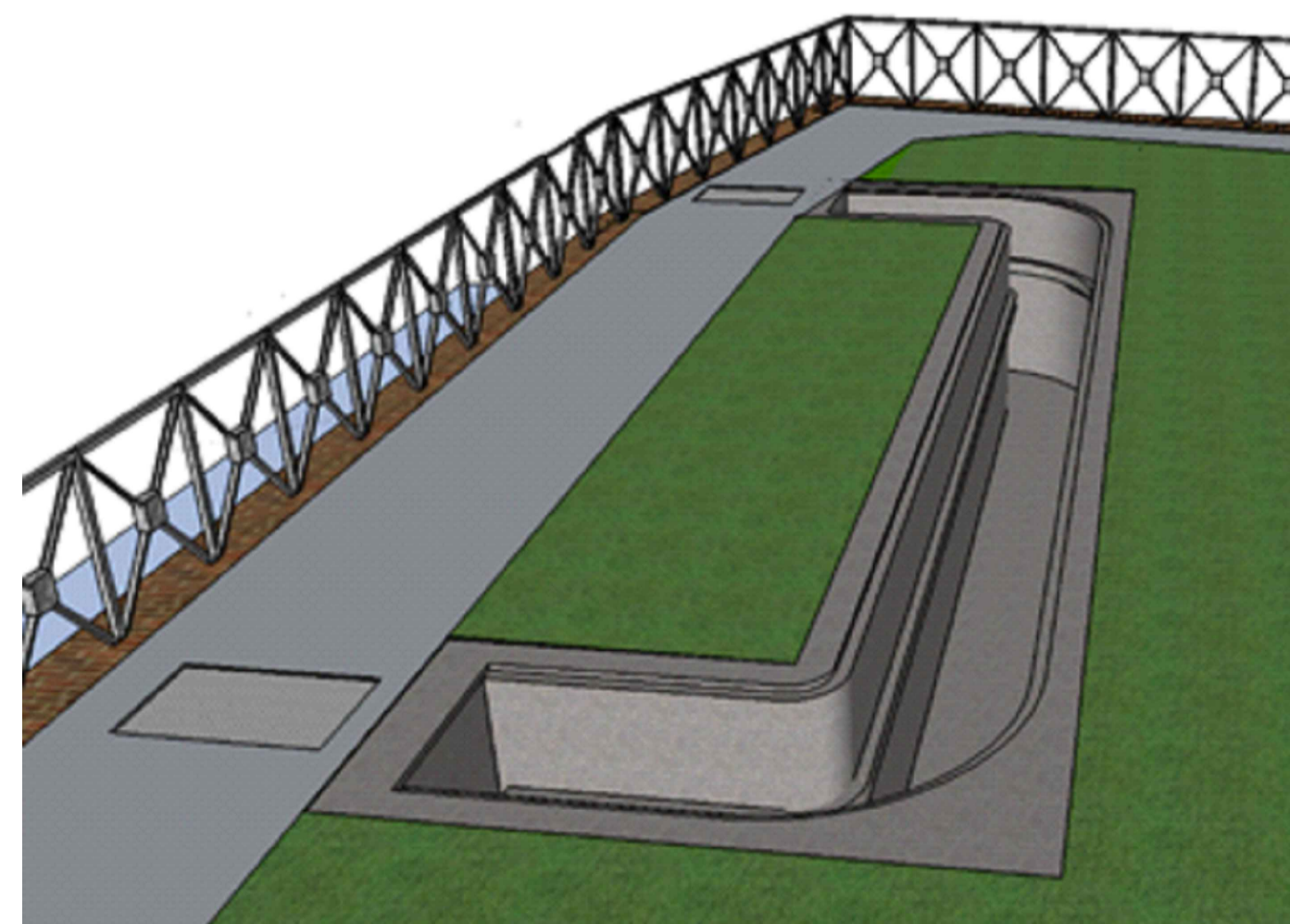
Gantry Cradle & Eel Pass in True Right Bank

(Eel boxes omitted from visualisation)



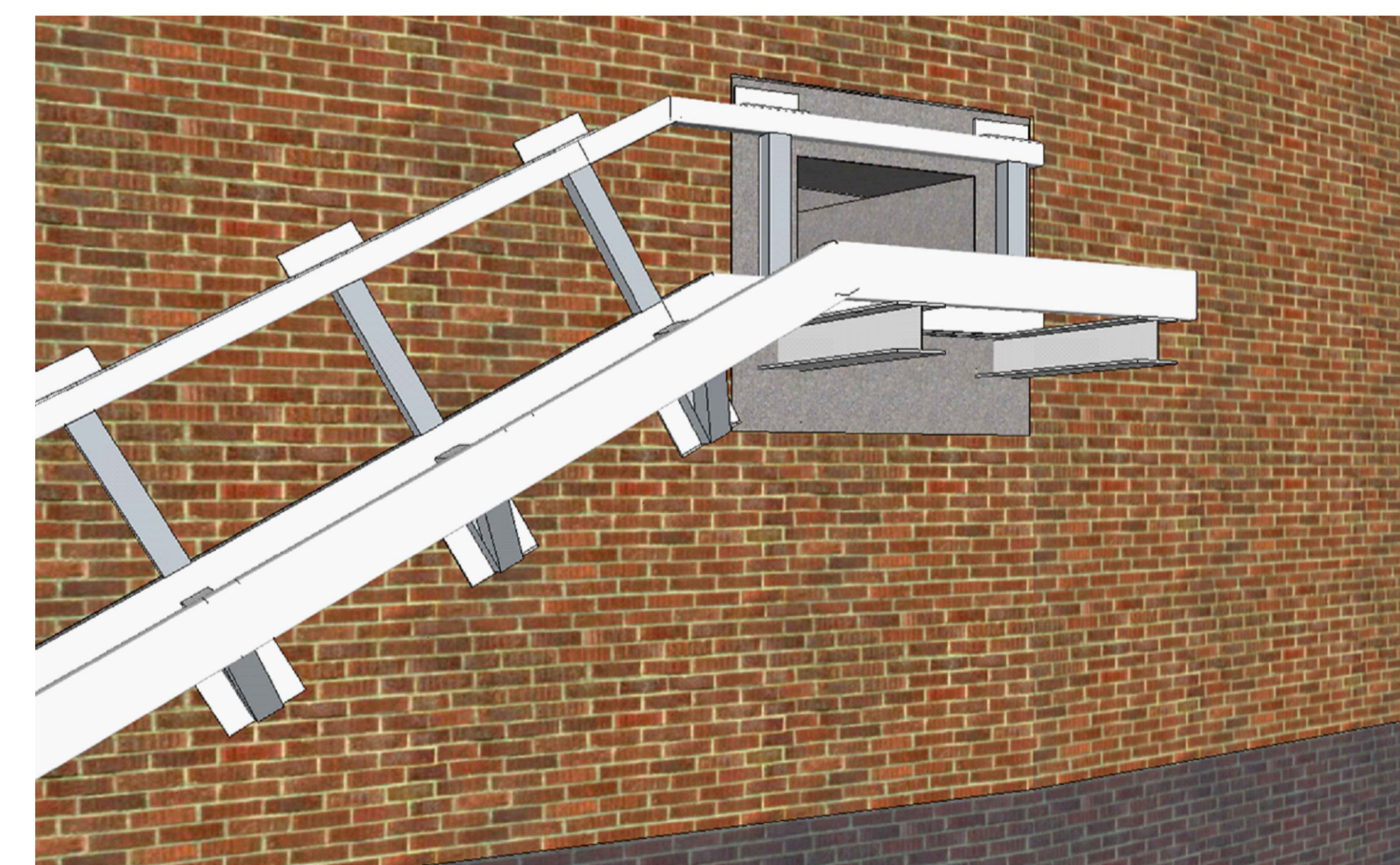
Gantry Cradle

(Eel boxes, GRP covers & eel pass tiles omitted from visualisation)



Eel Pass in True Right bank

(GRP covers & eel pass tiles omitted from visualisation)



Gantry Cradle

(Eel pass tiles omitted from visualisation)

C01	For Construction	09 / 03 / 20
P03	3rd draft issue	25 / 10 / 19
P02	2nd draft issue	14 / 10 / 19
P01	Draft Issue	16 / 07 / 19

Issue	Description	Date
-------	-------------	------

Status: **Detailed Design**

Scales	As shown	Current Issue Signatures	
		Author M.Lakin	<i>M.L.</i>
Original Size	A1	Checker A. Fryer / J.Rana	<i>A.F.</i> <i>J.R.</i>
Datum	AOD	Approver A. Fryer	<i>A.F.</i>
Grid		© Copyright reserved	

Filename:

Client:



PROJECT

SHWG
Abbey Mill Eel Pass

TITLE

Visualisations