

July 2024

De-regulation of Gooseum Rhyne Reservoir

Notification of start of works

Earlier this year, we let you know about our plans to de-regulate Gooseum Rhyne Reservoir, removing the need for the substantial works originally proposed, whilst still maintaining the same level of flood protection.

De-regulating the reservoir means we need to make sure the area can't hold enough water to be legally classified as a 'large-raised reservoir'. To do this, we will be lowering a section of the current Congresbury Yeo embankment just outside the southwest corner of the Green, which will allow water to drain more quickly.

We will also be making improvements to the footpath that runs alongside the basketball court and installing maintenance access gates on the crest of the northern embankment.

Location map



Construction

The work, including site setup and close-down, will take approximately six weeks. Our contractors Kier will be setting up the site at the end of July 2024 and starting construction on or around 7 August. They are due to finish work and have the site cleared by 11 September 2024. During this time there will be a site compound located next to the bank lowering site, and construction vehicle access will be via the footpath that runs adjacent to the basketball court and then across the Millennium Green. A traffic marshal will be in place during these times to help construction traffic and the public to safely access the Green.

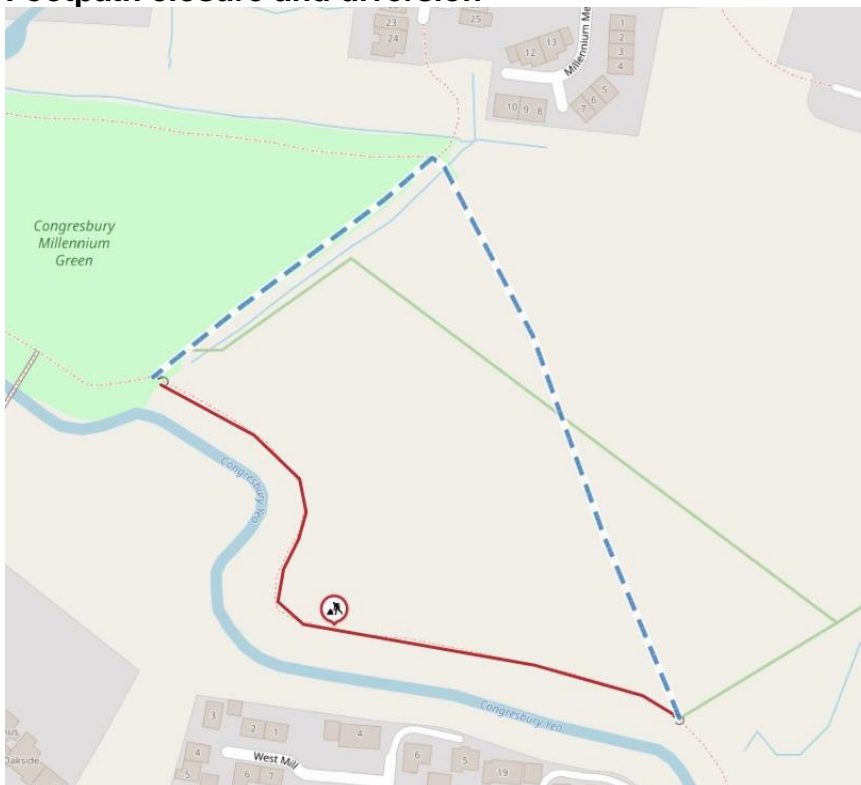
During the improvement works to this footpath, there won't be an official closure or diversion in place; however, a marshal will be onsite to direct users of the Green to an alternative pathway.

We will do everything we can to keep disruption to a minimum; however, there may be some noise disturbance during the main construction phase, and for this we apologise.



Temporary footpath closure

To carry out the work safely, we will need to temporarily close the footpath that runs from the southwest corner of the Green along the Congresbury Yeo. The closure will be in place for the duration of works and for a maintenance period afterwards to allow grass to establish. During this time, a footpath diversion will be in place as shown on the map on the below.

Footpath closure and diversion



Key

	Footpath closure
	Footpath diversion

Get in touch

We would like to thank you for your patience whilst we carry out this work, and if you have any construction-related queries, please get in touch with Kier's Public Liaison Officer, Claire Deacon by calling on 07714 683609.

If you have any other scheme-related questions or comments, please email us at gooseumreservoir@environment-agency.gov.uk or call us on 03708 506 506.