

Welcome

Sanway-Byfleet Flood Alleviation Scheme Autumn 2023 online engagement event



Jacobs



Sanway-Byfleet Flood Alleviation Scheme

Welcome

This event is to share designs and information on the Sanway-Byfleet Flood Alleviation Scheme and its associated environmental and community related enhancements.

Members of our project team are on hand to discuss the scheme with you today and we are keen to hear your feedback and receive your questions via our scheme questionnaire which can be completed online using the QR code below or on paper and dropped into our response box.



Consultation has now closed.
Any comments on the scheme
please email
THM.schemes@environment-agency.gov.uk

This scheme is being jointly developed by the Environment Agency, Woking Borough Council, Surrey Wildlife Trust, Surrey County Council, Byfleet Flood Forum, National Highways, Thames Water, RHS Wisley and the local community.



Background to the scheme

Byfleet has experienced notable floods in 1968, 2000 and 2003. In 2013/14 flooding from the River Wey flooded a total of 74 properties.

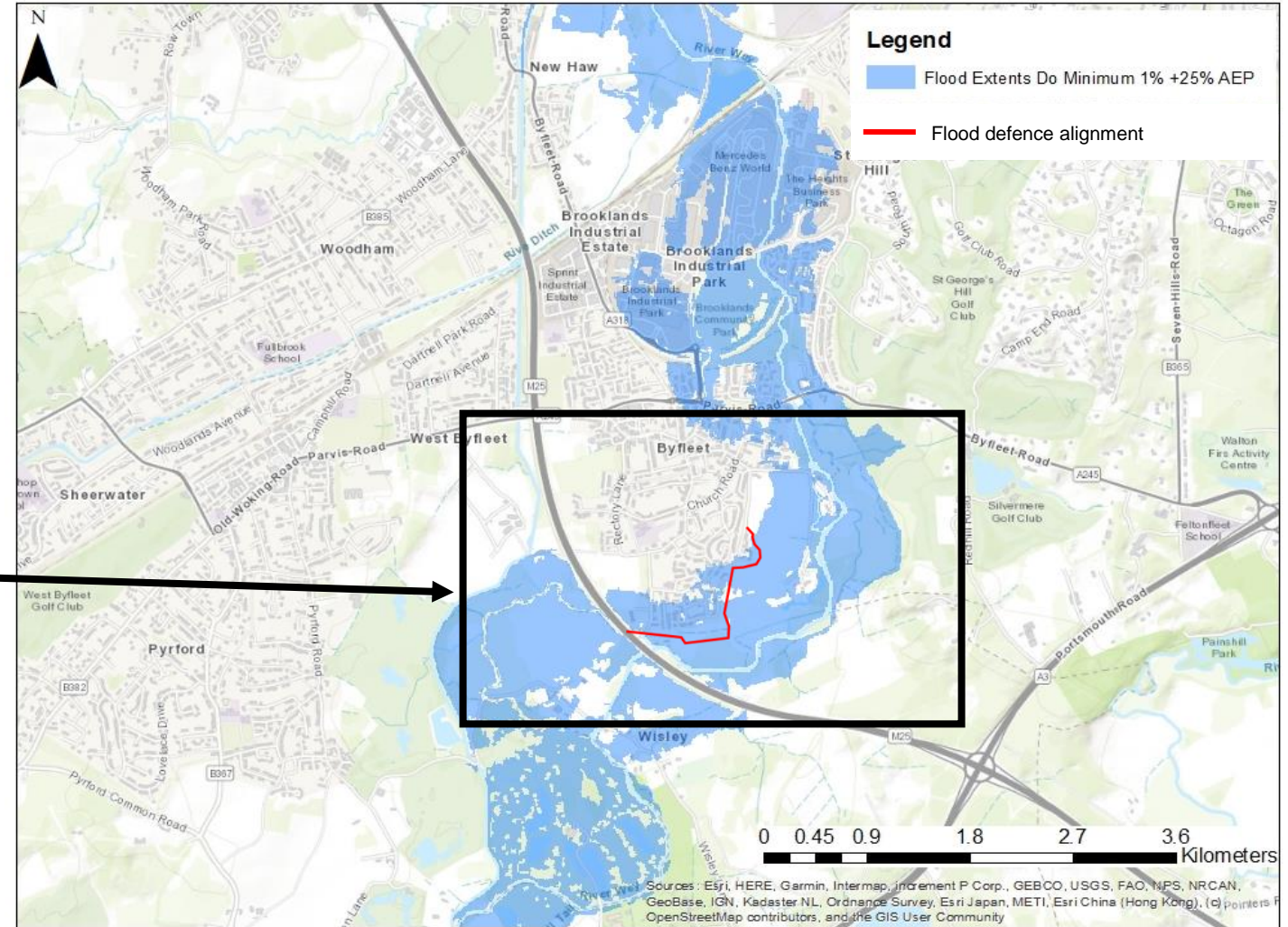
Following the 2013/14 flood, The Environment Agency agreed to review options to reduce flood risk at several locations in the Byfleet and Weybridge area and the appraisal identified an economically viable scheme for the Sanway area in Byfleet. The scheme now aims to better protect from flooding up to 236 properties in the Sanway area of Byfleet.

This map shows areas of interest for the scheme.



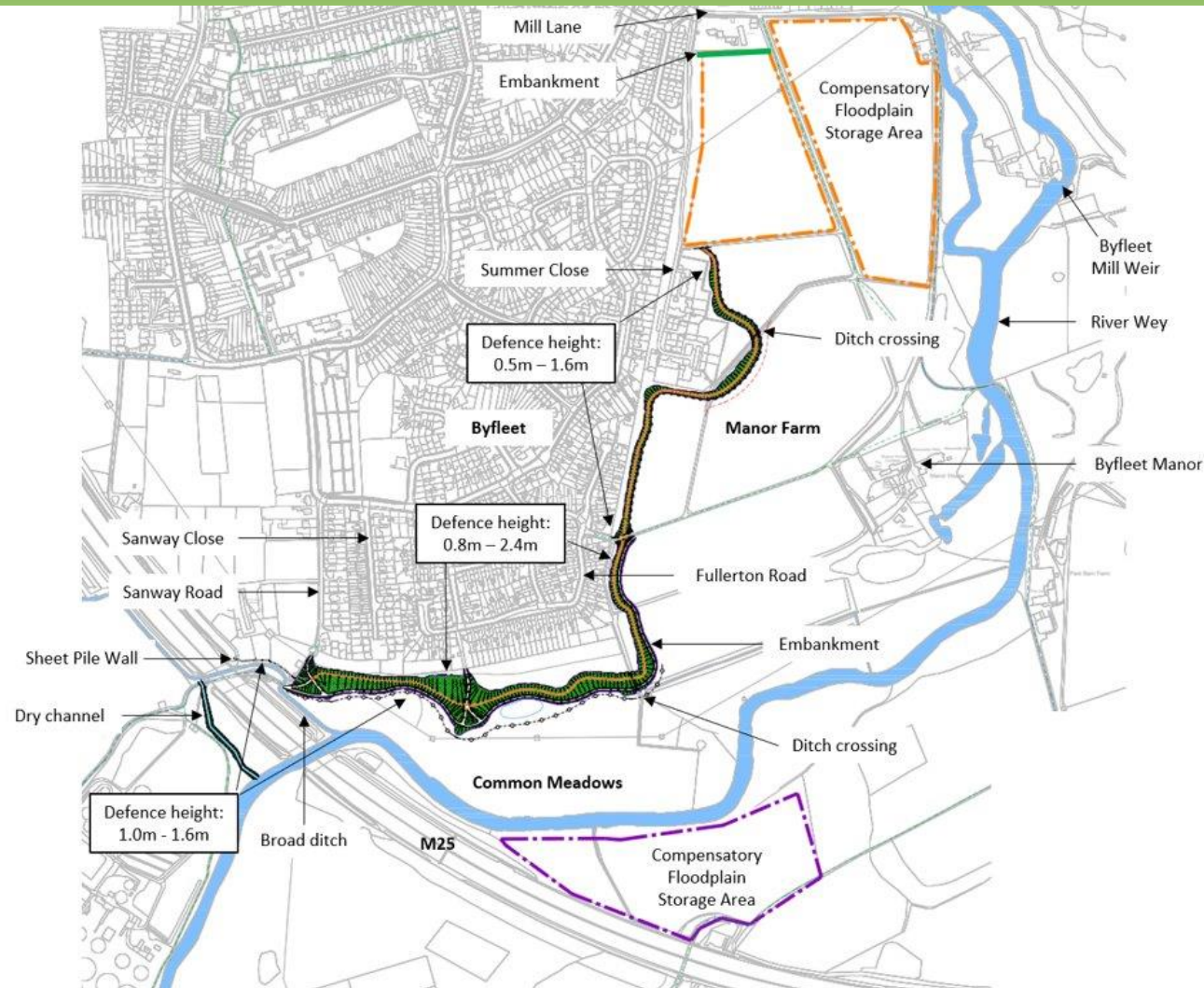
'Do Minimum' Flood Risk

This image shows what the flood risk in the Sanway Byfleet area would be, without a flood defence in place.



Flood defence proposals

Below is a map of the flood defence proposals, from September, with visualisations about how the environment will look following the scheme.



Environmental enhancement



Marlowe Pond Scrape

- Increased habitat diversity within Common Meadows and Manor Farm.
- Existing grassland areas will be more distinctive grassland habitats (i.e. lowland meadow).
- New wetland features will be created and ditches linked to the River Wey and increased marginal planting along the riverbanks.
- Providing a net increase in length of hedgerows within Manor Farm is under discussion with Surrey Wildlife Trust.

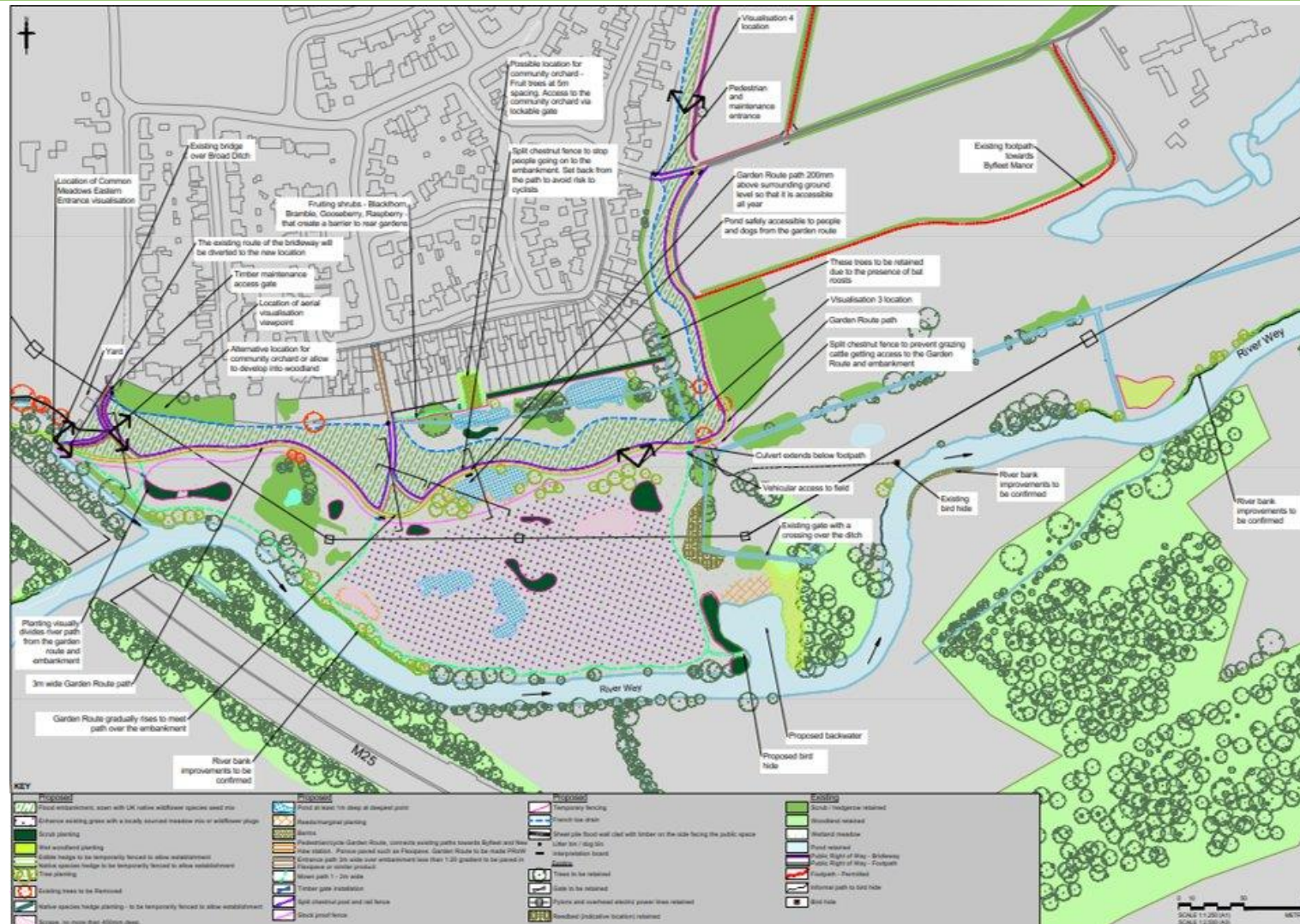
- Creation of pockets of wet woodland (woods that occur on ground that is often or seasonally wet).
- Enhanced provision and connectivity of footpaths within Common Meadows and to the wider footpath network both west of the M25 and northeast into Manor Farm.
- Improvements to M25 underpass – Improve daytime lighting, repainting and removal of fencing



Marlowe new Pond



Proposed draft landscaping plans for Common Meadow



Visualisations

Artist's Impression of aerial view of Common Meadows



Visualisations

**Artist's Impression of
entrance to
embankment from
Muddy Lane**



Visualisations

Artist's impression
view of Common
Meadows towards
Fullerton Road



Visualisations

**Artist's impression view
of flood defence
embankment north of
access from Fullerton
Road**



Visualisations

Artist's impression view of
Manor Farm
Compensatory Floodplain
Storage

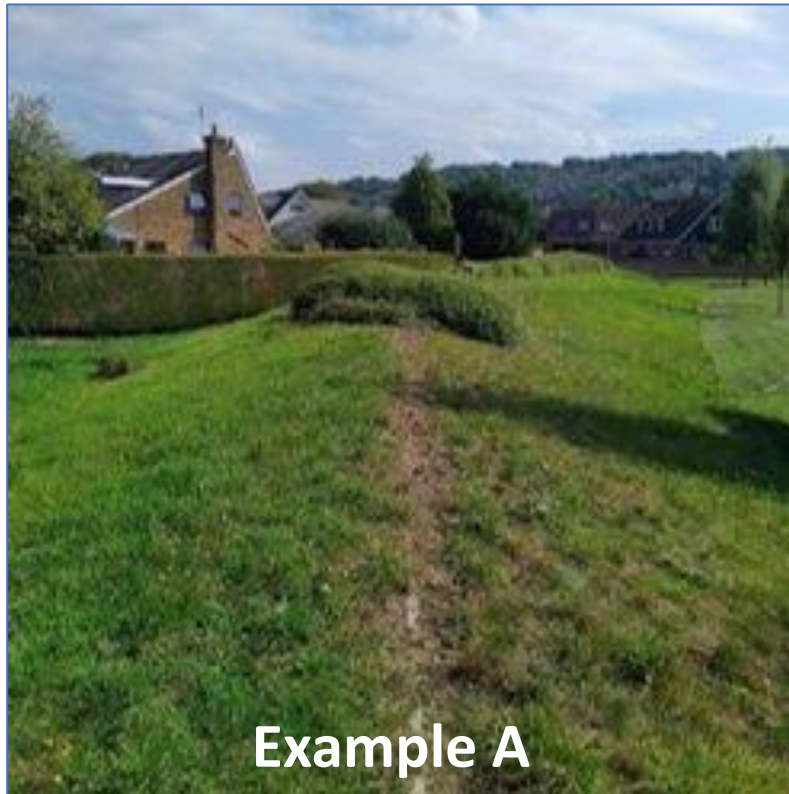


Examples of recently constructed embankments at Marlow

A & B - Embankment height between 1.2m – 1.6m

C - Access path over the embankment. Gentle 1:20m slope similar to the Sanway paths crossing the embankment

Landscaping and planting for Sanway Byfleet FAS embankment not yet finalised but will be similar to Marlow



Example A



Example B



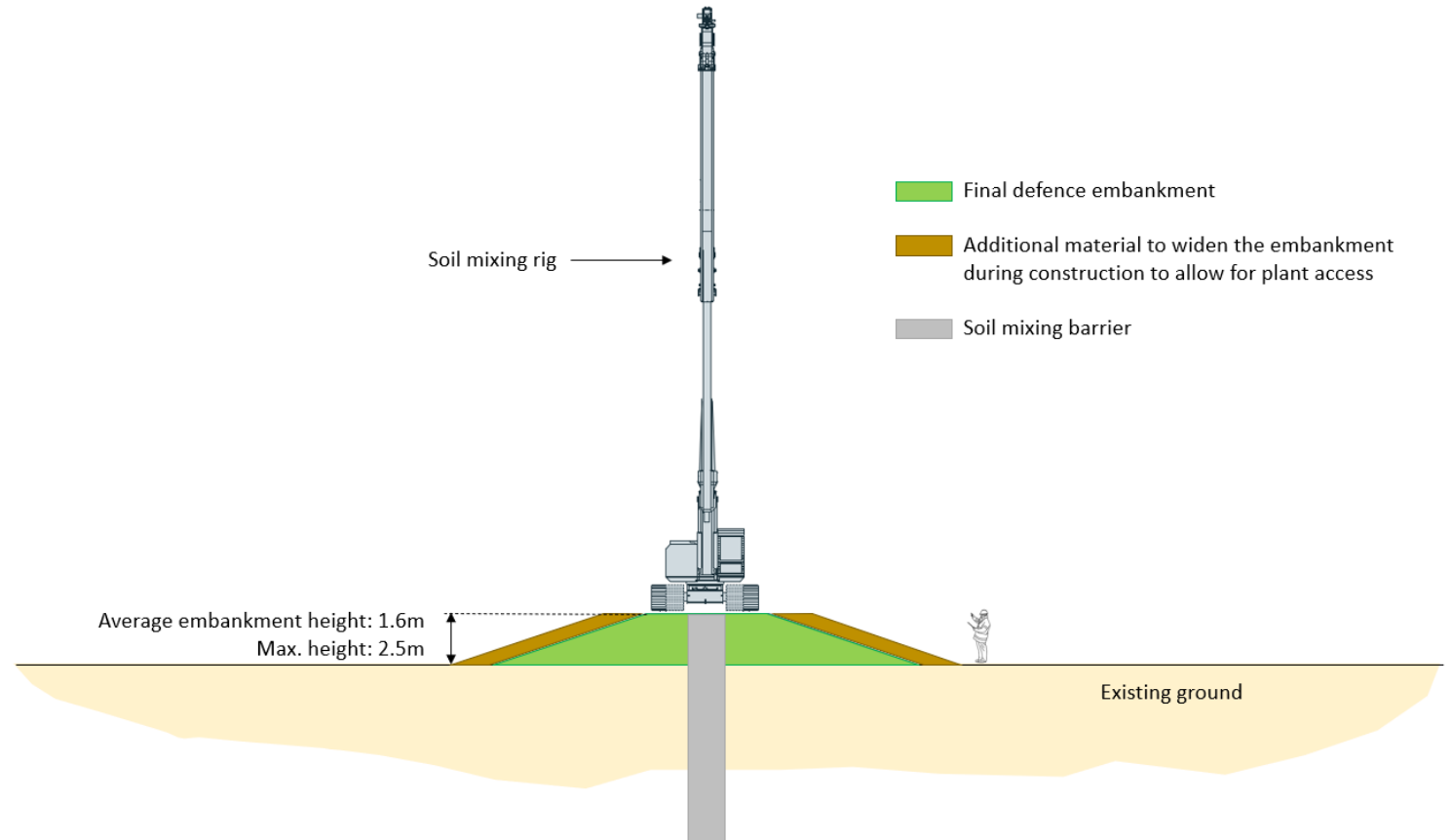
Example C



Embankment diagram

The sketch below shows how the embankment will be constructed. This includes the flood wall, soil and piling rig.

Water held back by the flood embankment will slowly seep through the soil coming out on the dry side of the embankment. To stop this, we will install an impermeable 'cut off' through the embankment into the ground below. Our preferred method to create the 'cut off' will be to mix in the ground the existing soil with cement to create an impermeable wall



Soil Mixing Equipment

The photos show the typical equipment used for soil mixing. Similar equipment will be used for the flood alleviation measures in this project.



Construction

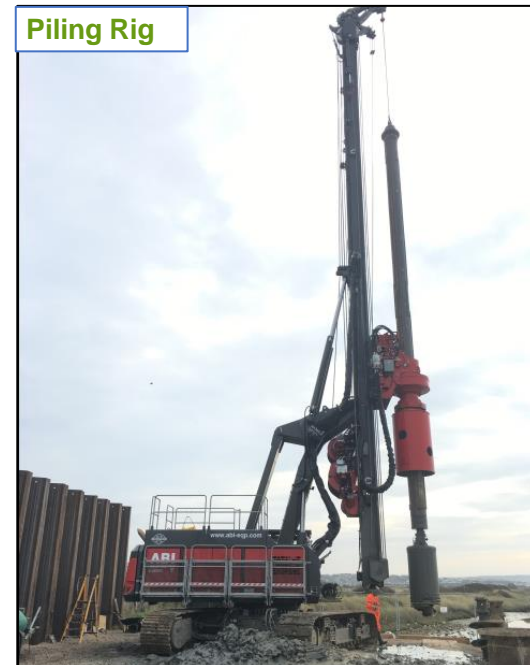
The working hours for construction of the scheme are 08:00 to 18:00 Monday to Friday, however pre-start activities such as daily briefings, may begin earlier to allow physical work to start on time at 08:00. We will be working across all areas of the construction site. While there may be times when construction is not visible, we will be still be working on that area.

We will do everything we can to reduce disruption like using plant with most up to date engine technology, looking at options to reduce vehicle movements and putting up site hoard and fencing to reduce visual and noise effects.

The images below show some examples of the construction equipment that could be used.



Noise and vibration monitoring equipment



Piling Rig



21t excavator



Tractor and Bowser for dust suppression

You Said, We Did

You said...

When consulted on flood defence measures, residents of Fullerton Road expressed a preference towards an embankment over a flood wall.

Residents expressed concerns over the privacy of their gardens if an embankment was planned.

The public have expressed concern about protecting wildlife in the local area.

Local people suggested the creation of a community orchard

A request was made to hold engagement sessions in the morning as well as the afternoon/evening.

We did...

We've chosen to use an embankment flood defence instead of a flood wall.

We've included solutions such as hedges, fencing, and wildflower mixes to maintain privacy in the design of the embankment

We've changed the paths to separate people and wildlife where possible. The paths will also be grassier and include wildflowers.

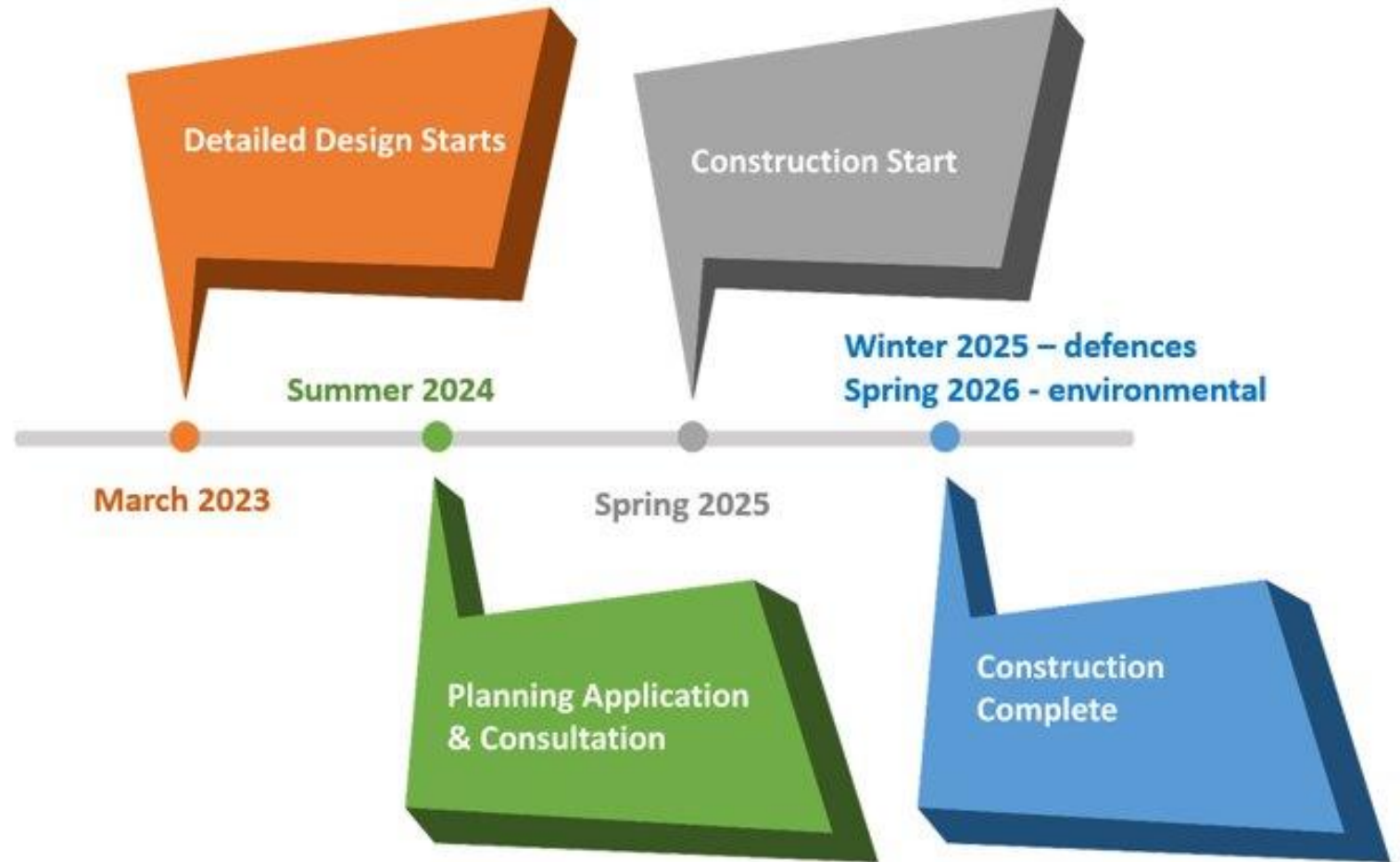
Our project team are working with community reps and RHS Wisley to explore locations and tree species for an orchard

We're holding two in person events on two separate days in October, one in the morning and one in the afternoon /evening



Timescales

Subject to stakeholder agreement, planning permission, funding approvals and construction risks.



Feedback

We would like to understand your thoughts about our scheme.

Summer 2023 in Sanway



***Further engagement events
planned for Spring 2024***



**Consultation has now closed.
Any comments on the scheme
please email
[THM.schemes@environment-
agency.gov.uk](mailto:THM.schemes@environment-agency.gov.uk)**

Email: THM.schemes@environment-agency.gov.uk

Telephone: 03708 506 506

Post: Sanway-Byfleet FAS, Kings Meadow House,
Kings Meadow Road, Reading, RG1 8DQ



AOB

