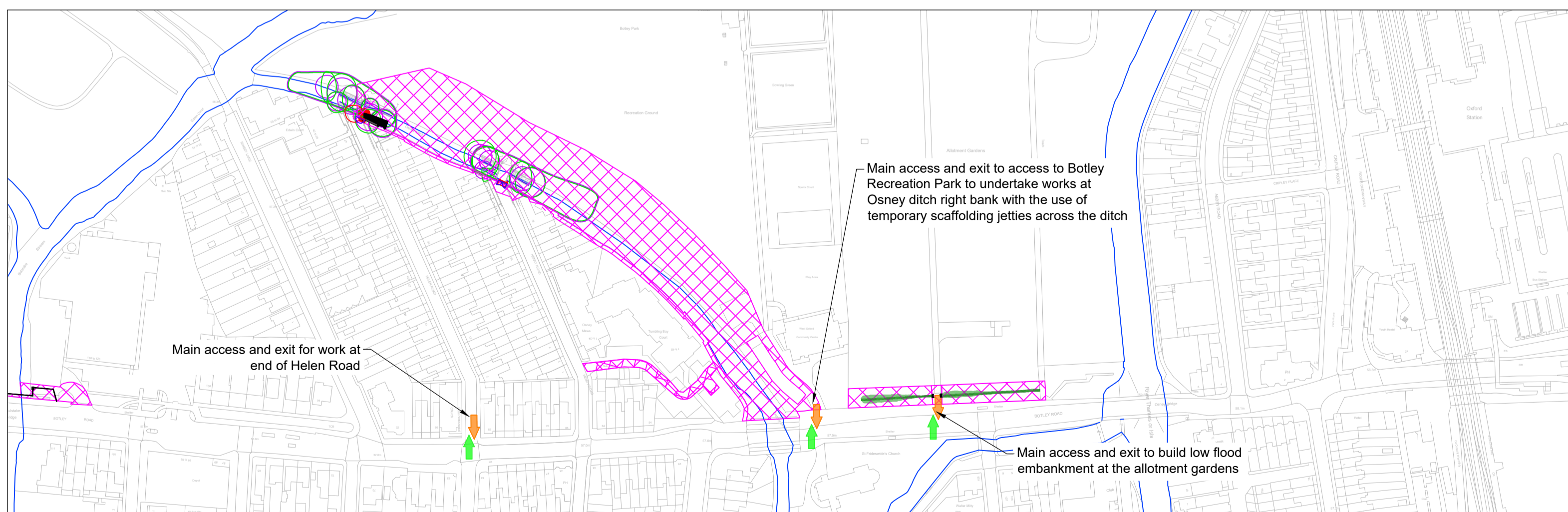
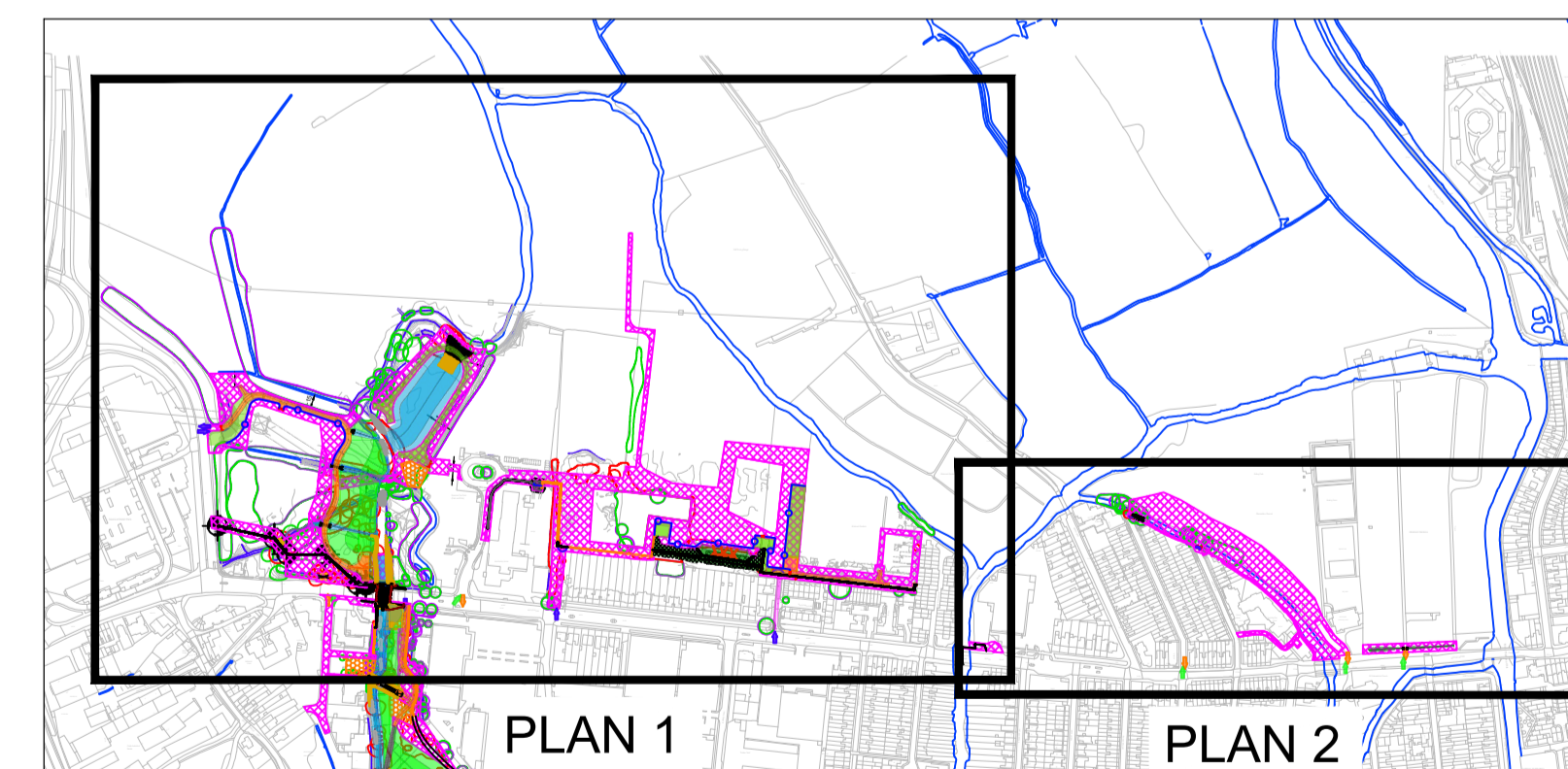


PLAN 1
SCALE 1:2000 AT A1

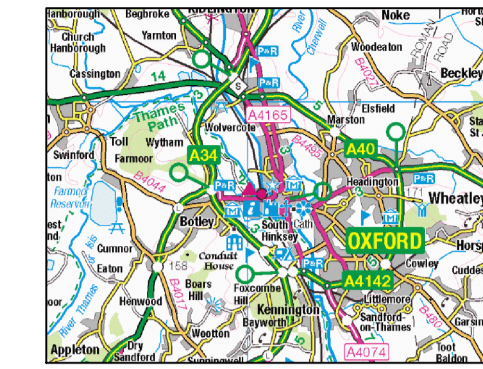


PLAN 2
SCALE 1:2000 AT A1



OVERVIEW PLAN

Key Plan:



General notes:

- All dimensions are in millimetres unless otherwise stated. All levels are in metres above Ordnance Datum (mAOD) Newlyn.

Notes:

- This drawing is to be read in conjunction with drawing IMSE500177-CH2-ZZ-A1-DR-C-1000.
- Services information is not shown on this drawing for clarity. Refer to drawing IMSE500177-CH2-00-00-VS-UT-0036 for the location of services.
- The Contractor may only remove the trees/vegetation that are herewith shown/labelled to be removed. Should additional trees/vegetation be required to be removed, the Contractor is to seek advance approval from the Environmental Clerk of Works prior to removal.

Legend:

- Proposed haul routes / working areas
- Proposed temporary crossings (Not to scale)
- Proposed compound areas and temporary material storage areas
- Proposed emergency access route
- Existing Watercourses
- New / Modified First-Stage Channel
- New Second-Stage Channel
- New Maintenance track
- Wetland Features (Scrapes, Backwaters)
- Existing trees to be retained
- Existing trees to be felled
- Root protection area
- Mitigation areas - Woodland creation
- Main access location for construction
- Main exit location for construction
- Provisional access and exit location for temporary work. Also access for emergency vehicles

S2-FIT FOR INFORMATION

Rev	By	Chkd	Apprvd	Date	Description
P02	KK	MBA	PJM	18/12/2021	PLANNING APPLICATION 2021
P01	MM	MBA	PJM	19/11/21	PLANNING APPLICATION 2021



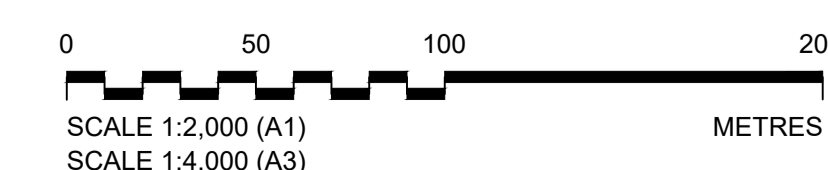
Project
WEM LOT 3 - OXFORD FLOOD ALLEVIATION SCHEME DETAILED DESIGN
684232

AREA 1 LOCATION FOR CONSTRUCTION ACCESS AND TEMPORARY STORAGE AREAS

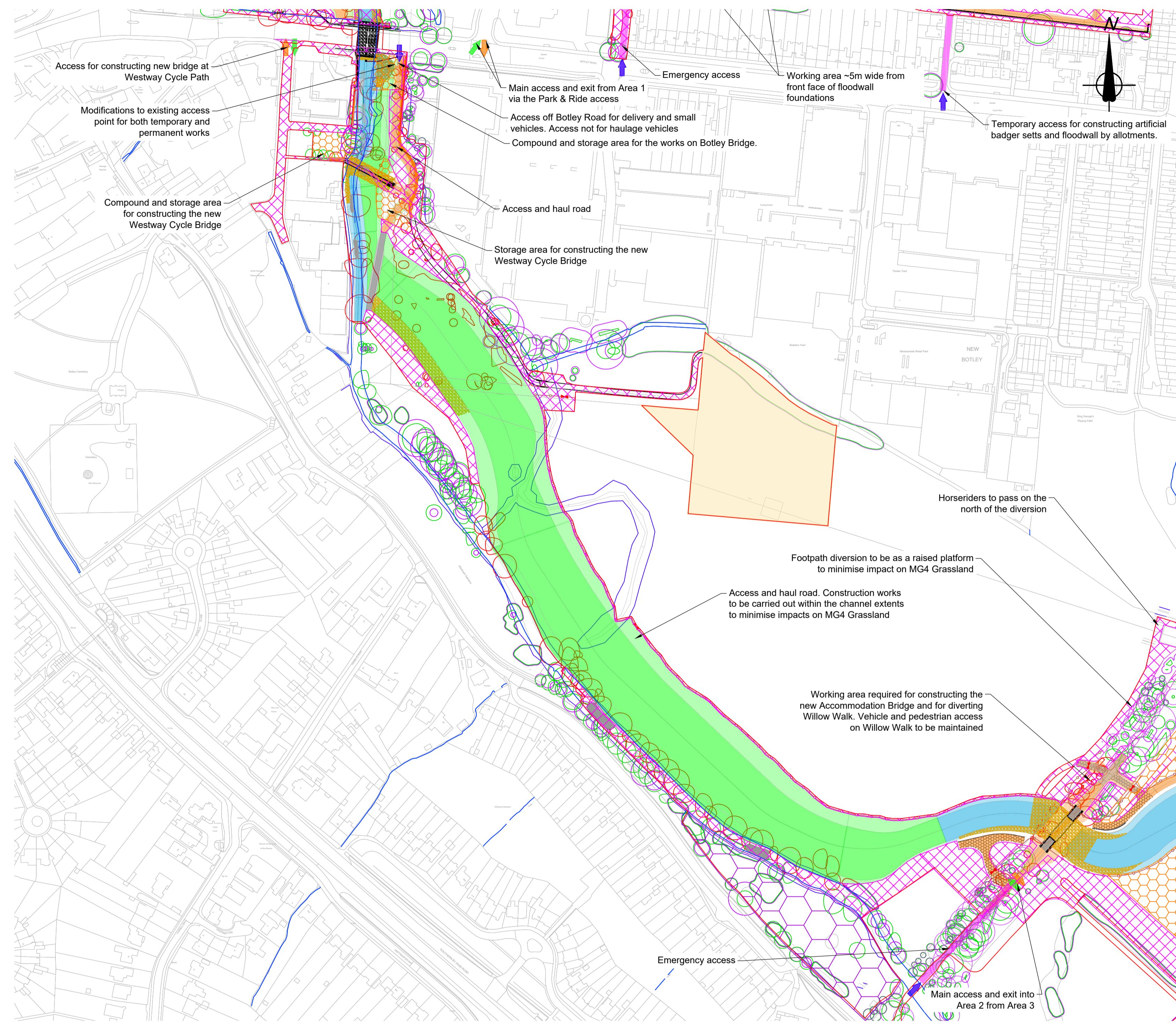
Drawn by: J.CYGAN Date: 11/10/17
Checked by: Z.OMARH Date: 13/10/17
Approved by: P.MARSH Date: 13/10/17

Drawing No.	Revision
IMSE500177-CH2-B00-A1-DR-PL-1010	P02

Document Suitability: S2

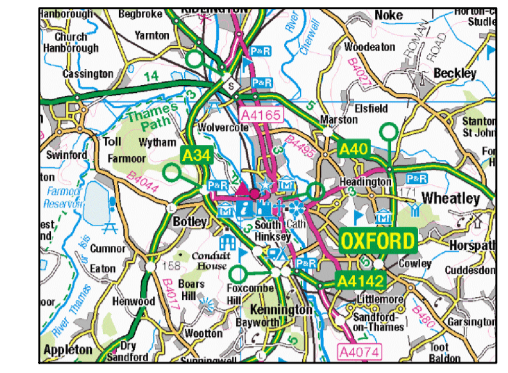


THIS MAP IS REPRODUCED FROM ORDNANCE SURVEY MATERIAL BY HALLOW, A DCM HILL COMPANY, ON BEHALF OF Environment Agency WITH THE PERMISSION OF THE CONTROLLER OF HER MAJESTY'S STATIONERY OFFICE. CROWN COPYRIGHT. UNAUTHORISED REPRODUCTION INFRINGES CROWN COPYRIGHT AND MAY LEAD TO PROSECUTION OR CIVIL PROCEEDINGS. LICENCE: 10025452



PLAN
SCALE 1:2000 AT A1

Key Plan:



General notes:

- All dimensions are in millimetres unless otherwise stated. All levels are in metres above Ordnance Datum (mAOD) Newlyn.

Notes:

- This drawing is to be read in conjunction with drawing IMSE500177-CH2-ZZ-A2-DR-C-2000.
- Services information is not shown on this drawing for clarity. Refer to drawing IMSE500177-CH2-00-00-VS-UT-0036 for the location of services.
- The Contractor may only remove the trees/vegetation that are herewith shown/labelled to be removed. Should additional trees/vegetation be required to be removed, the Contractor is to seek advance approval from the Environmental Clerk of Works prior to removal.

Legend:

- Proposed haul routes / working areas
- Proposed compound areas and temporary material storage areas
- Proposed emergency access route
- Existing Watercourses
- New / Modified First-Stage Channel
- New Second-Stage Channel
- New Maintenance track
- Wetland Features (Scrapes, Backwaters)
- Existing trees to be retained
- Existing trees to be felled
- Root protection area
- Indicative extents of MG4 grassland
- Mitigation areas - Woodland creation
- Exchange land area
- Main access location for construction
- Main exit location for construction
- Provisional access and exit location for temporary work. Also access for emergency vehicles

S2-FIT FOR INFORMATION

Rev	By	Chkd	Apprvd	Date	Description
P02	KK	MBA	PJM	13/12/21	PLANNING APPLICATION 2021
P01	MM	MBA	PJM	19/11/21	PLANNING APPLICATION 2021

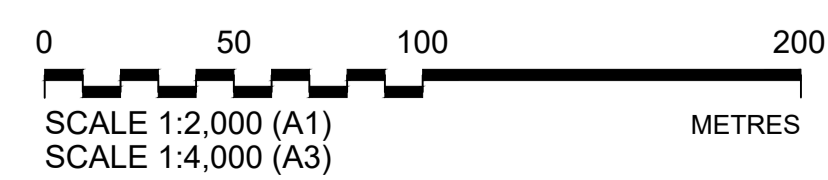


Project
WEM LOT 3 - OXFORD FLOOD ALLEVIATION SCHEME DETAILED DESIGN
684232

Drawing
AREA 2
LOCATION FOR CONSTRUCTION ACCESS AND TEMPORARY STORAGE AREAS

Drawn by: P.SEGIT	Date: 17/03/17
Checked by: Z.OMAR	Date: 20/03/17
Approved by: P.MARSH	Date: 30/03/17
Drawing No. IMSE500177-CH2-B00-A2-DR-PL-2010	Revision P02

Document Suitability: S2



THIS MAP IS REPRODUCED FROM ORDNANCE SURVEY MATERIAL BY HALCROW, A CH2M HILL COMPANY, ON BEHALF OF Environment Agency WITH THE PERMISSION OF THE CONTROLLER OF HER MAJESTY'S STATIONERY OFFICE. CROWN COPYRIGHT. UNAUTHORISED REPRODUCTION INFRINGES CROWN COPYRIGHT AND MAY LEAD TO PROSECUTION OR CIVIL PROCEEDINGS. LICENCE: 10025452