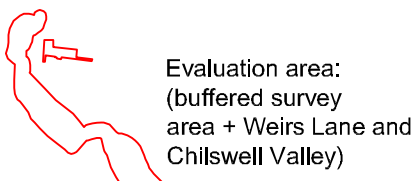

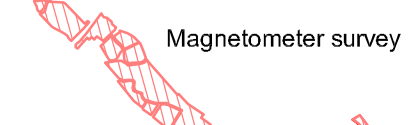


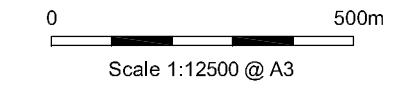


LEGEND

-  Evaluation area: (buffered survey area + Weirs Lane and Chilswell Valley)
-  Chilswell Valley survey (blue)
-  Magnetometer survey
-  Channel Options
-  Proposed EM Survey



Surveyed by Bartlett Clark Consultancy (01865 200864)

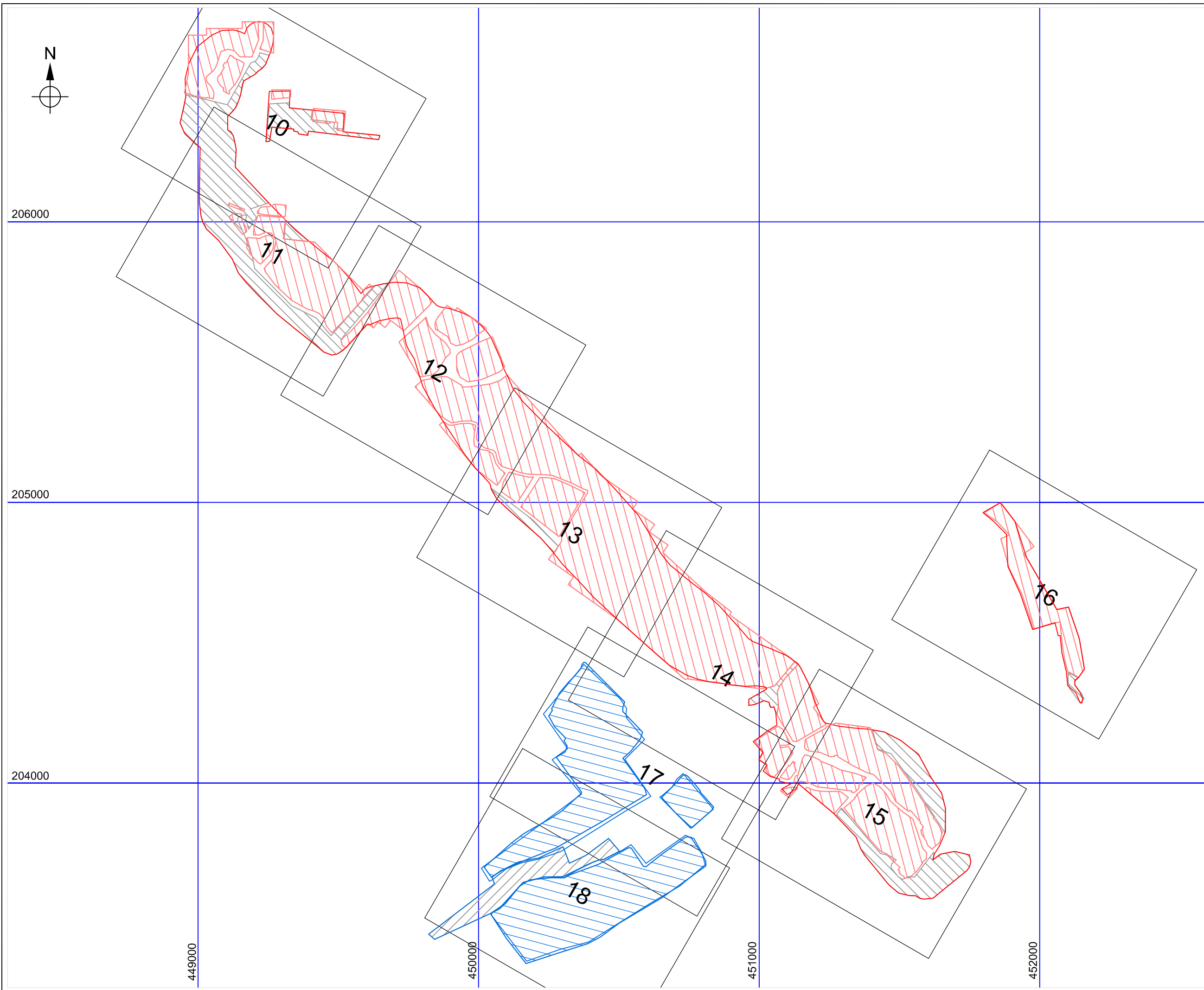
for
 Oxford Archaeology Ltd
 Janus House
 Osney Mead
 Oxford
 Oxfordshire OX2 0ES

Project
Oxford Flood Alleviation Scheme

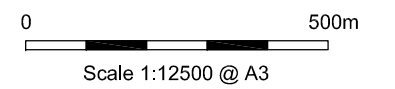
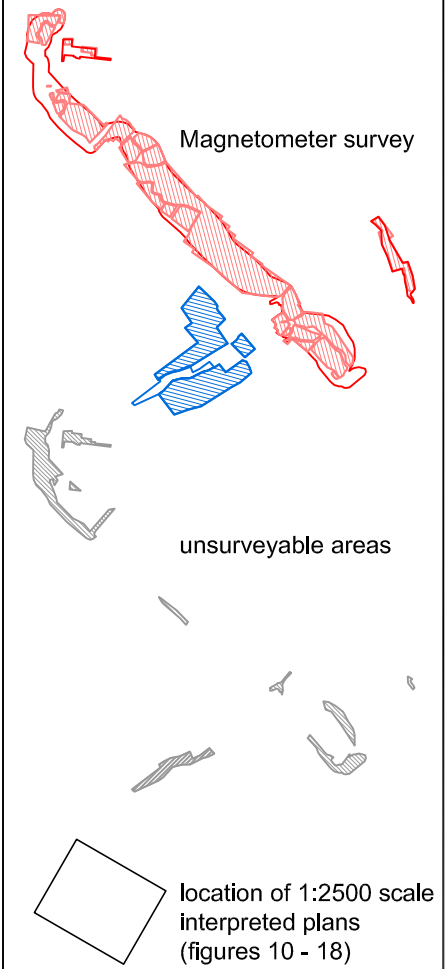
Archaeological Geophysical Survey 2016

Drawing title
Figure 1
 Locations of magnetometer and EM surveys

Contains Ordnance Survey data © Crown Copyright 2016.



LEGEND



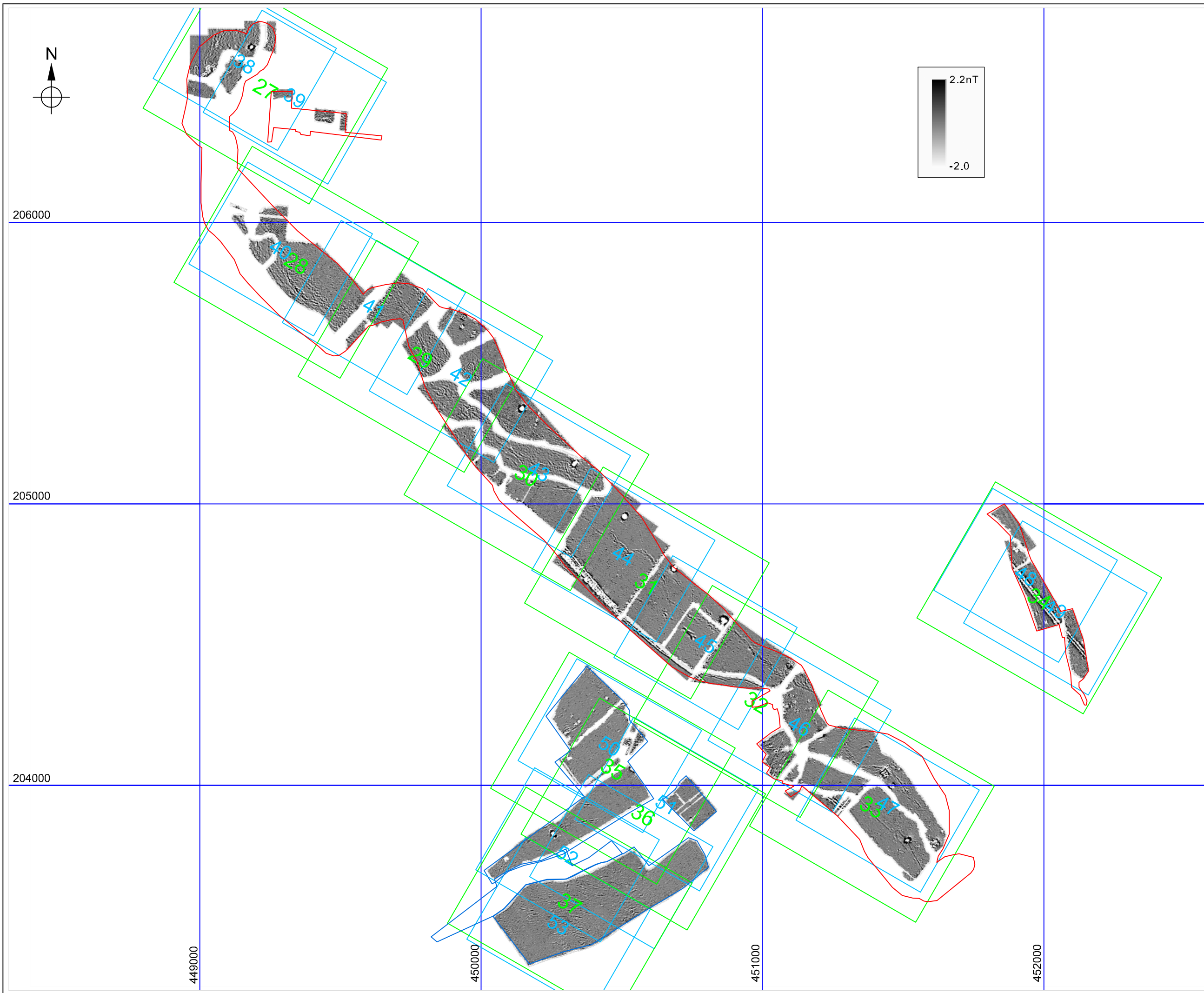
Surveyed by Bartlett Clark Consultancy
(01865 200864)

for
Oxford Archaeology Ltd
Janus House
Osney Mead
Oxford
Oxfordshire OX2 0ES

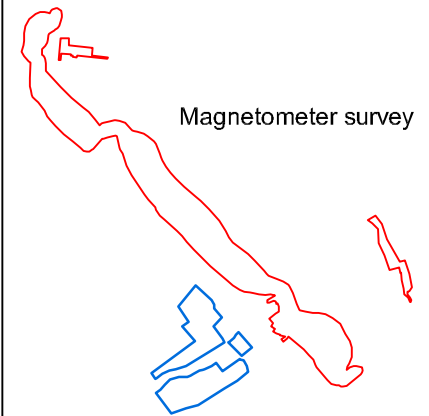
Project
**Oxford Flood Alleviation
Scheme**

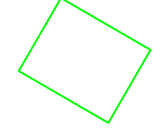
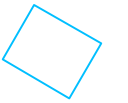
**Archaeological Geophysical
Survey 2016**

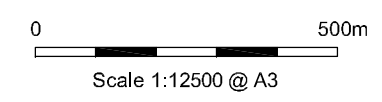
Drawing title
Figure 2
Locations of 1:2500 scale
interpreted plans of
magnetometer and EM results



LEGEND



-  location of 1:2000 scale magnetometer grey scale data plots (figures 27 - 37)
-  location of 1:1500 scale magnetometer xy data plots (figures 38 - 53)



Surveyed by Bartlett Clark Consultancy
(01865 200864)

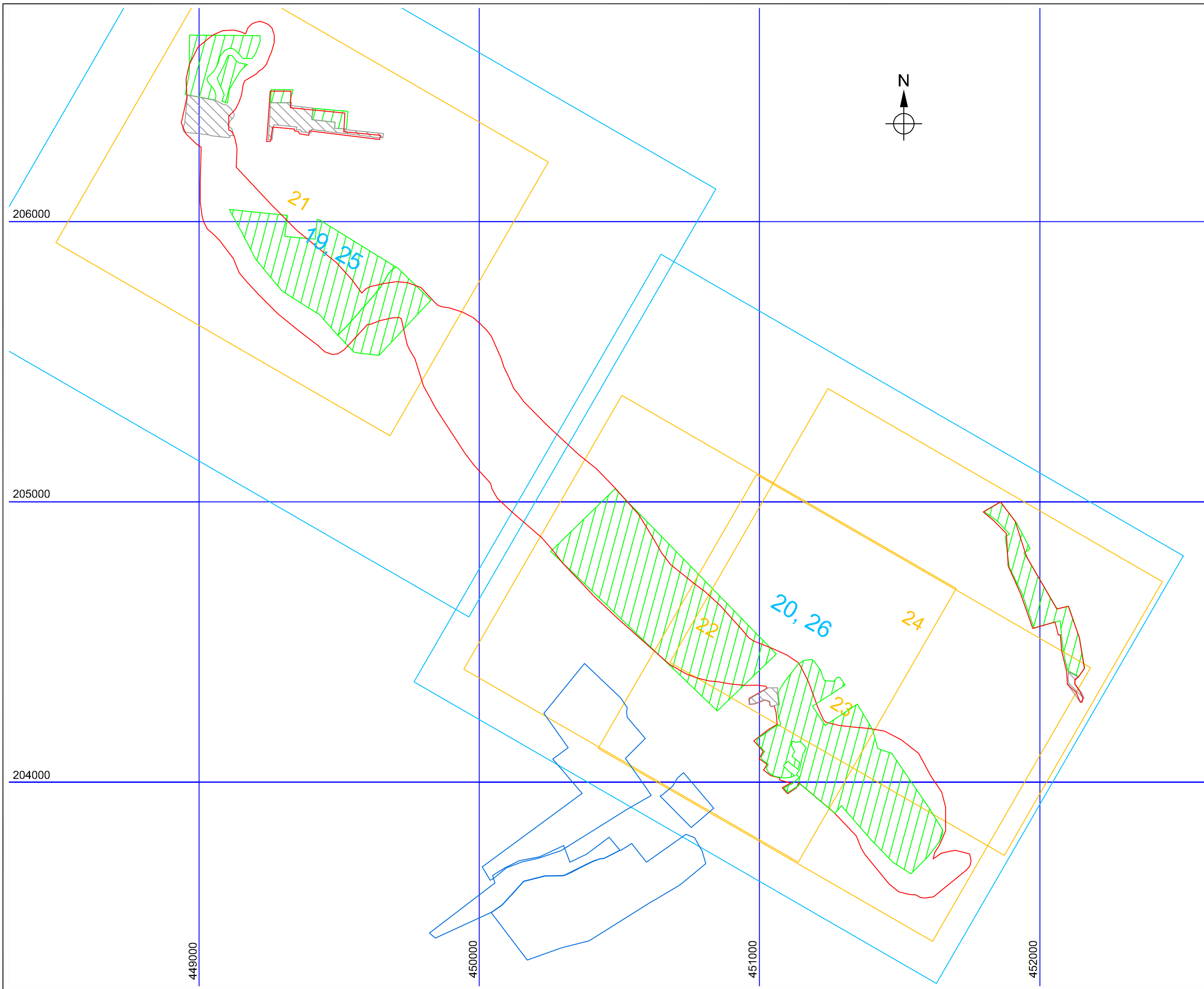
for
Oxford Archaeology Ltd
Janus House
Osney Mead
Oxford
Oxfordshire OX2 0ES

Project
Oxford Flood Alleviation Scheme

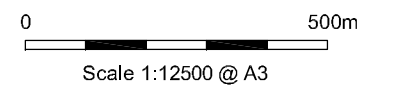
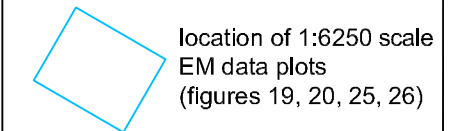
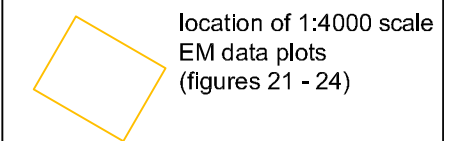
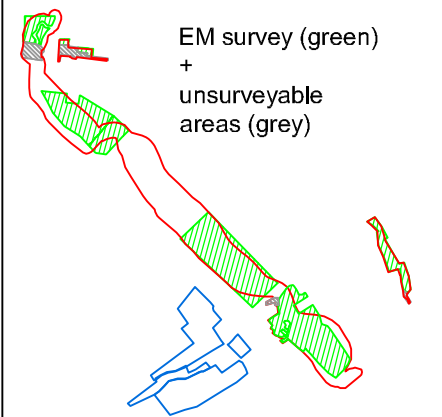
Archaeological Geophysical Survey 2016

Drawing title
Figure 3

Locations of 1:2000 and 1:1500 scale magnetometer data plots



LEGEND



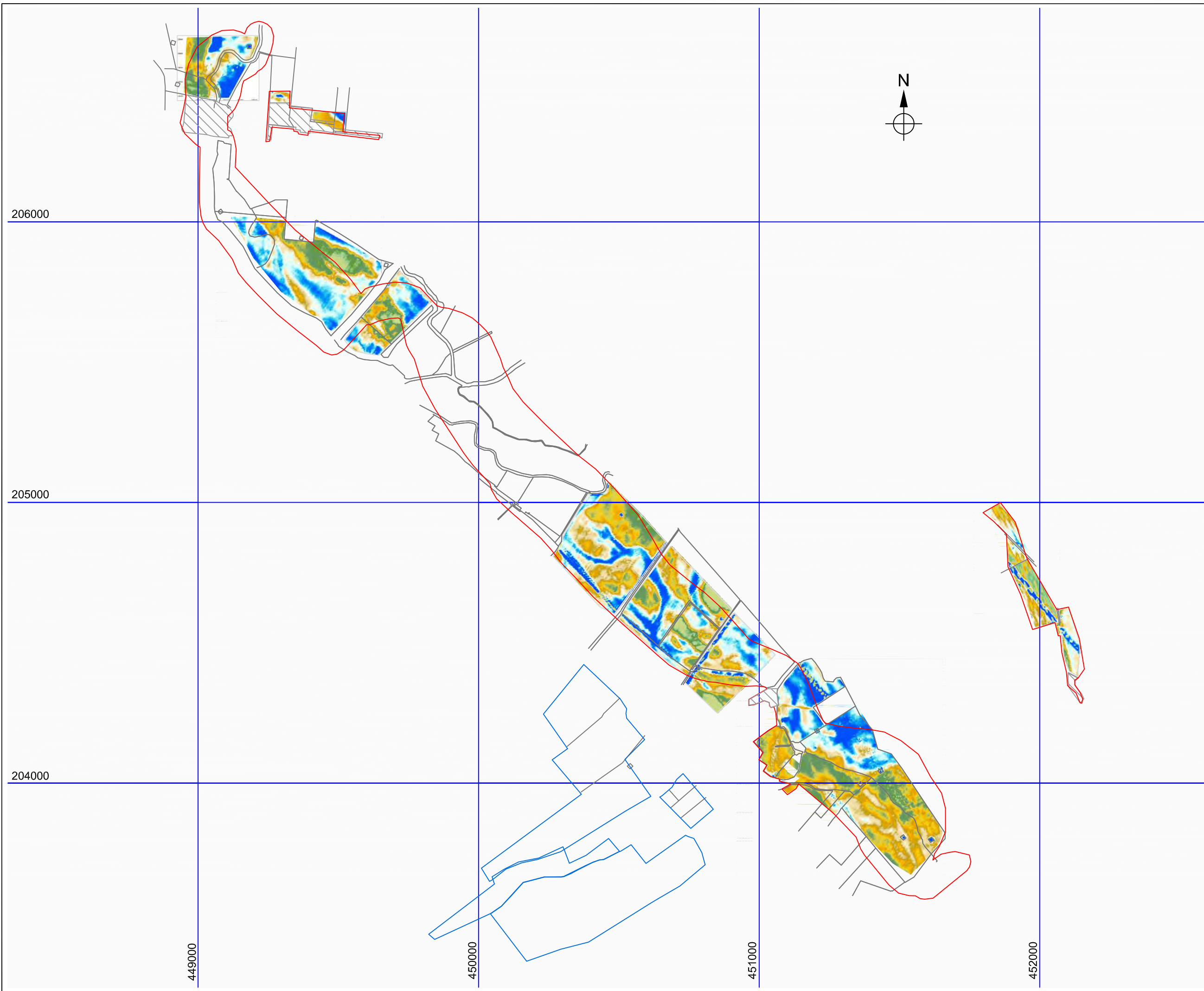
Surveyed by Bartlett Clark Consultancy
(01865 200864)

for
Oxford Archaeology Ltd
Janus House
Osney Mead
Oxford
Oxfordshire OX2 0ES

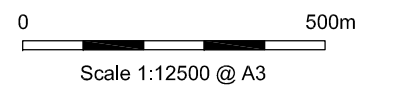
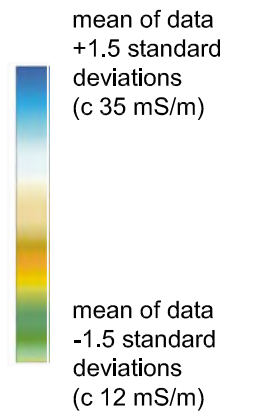
Project
**Oxford Flood Alleviation
Scheme**

**Archaeological Geophysical
Survey 2016**

Drawing title
Figure 4
**Location of specified
EM survey areas and
1:4000 + 1:6250
EM data plots**



LEGEND



Surveyed by Bartlett Clark Consultancy
(01865 200864)

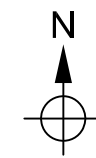
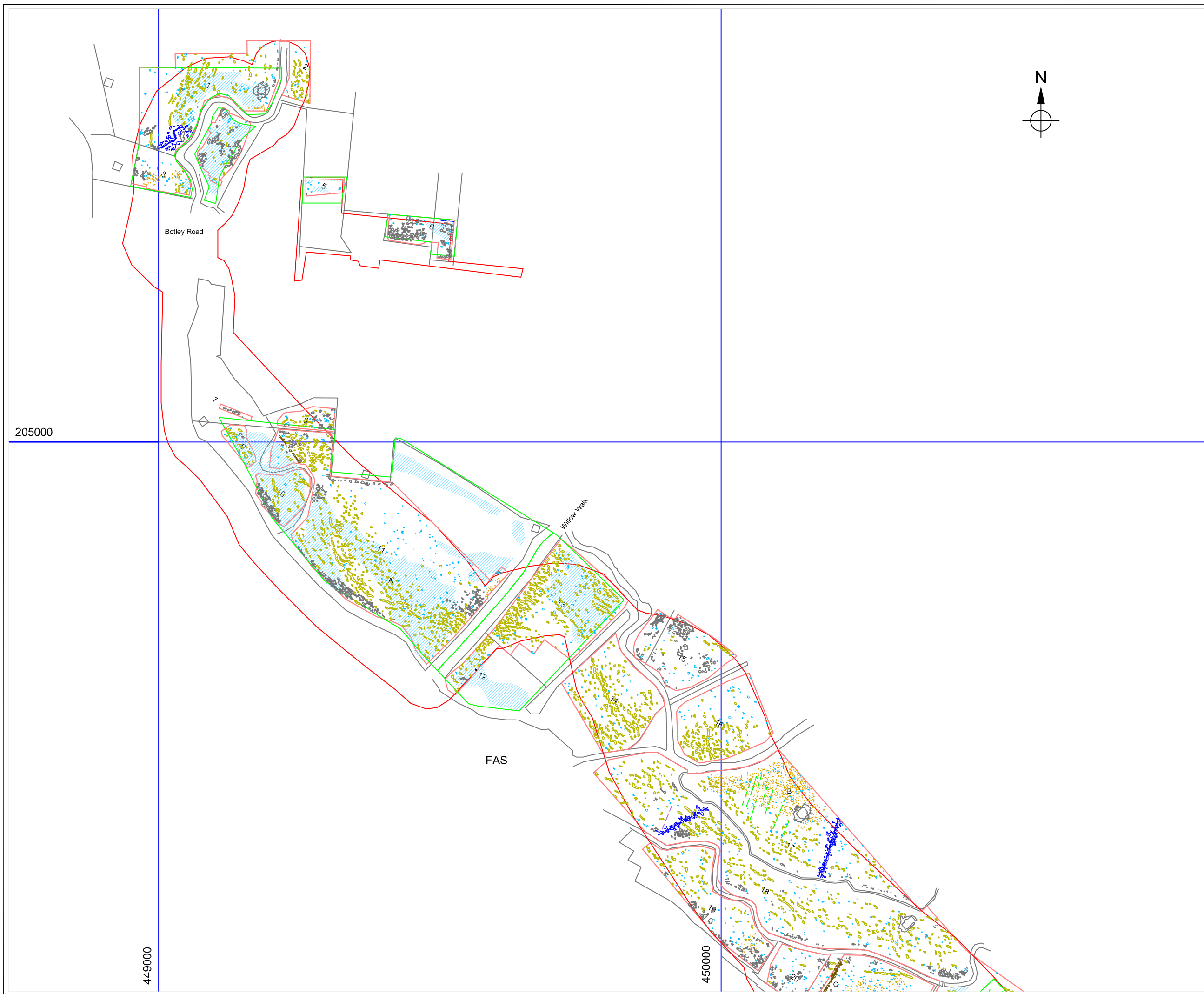
for
Oxford Archaeology Ltd
Janus House
Osney Mead
Oxford
Oxfordshire OX2 0ES

Project
**Oxford Flood Alleviation
Scheme**

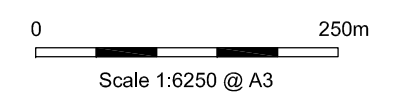
**Archaeological Geophysical
Survey 2016**

Drawing title

Figure 5
**Summary plot of EM
conductivity data
(2m depth)**



- LEGEND**
- magnetic anomalies (archaeological ?)
 - possibly archaeological ?
 - field boundaries ?
 - strong (recent ?) magnetic disturbances
 - other areas of increased background magnetic activity (partly natural ?)
 - broad / irregular magnetic anomalies (silt deposition on floodplain ?)
 - other natural channels or hollows (on higher ground)
 - land drains
 - cultivation ?
 - pipe
 - strong (ferrous) magnetic anomalies
 - approximate extent of high conductivity anomalies (from 2m depth EM data)



Surveyed by Bartlett Clark Consultancy
(01865 200864)

for
Oxford Archaeology Ltd
Janus House
Osney Mead
Oxford
Oxfordshire OX2 0ES

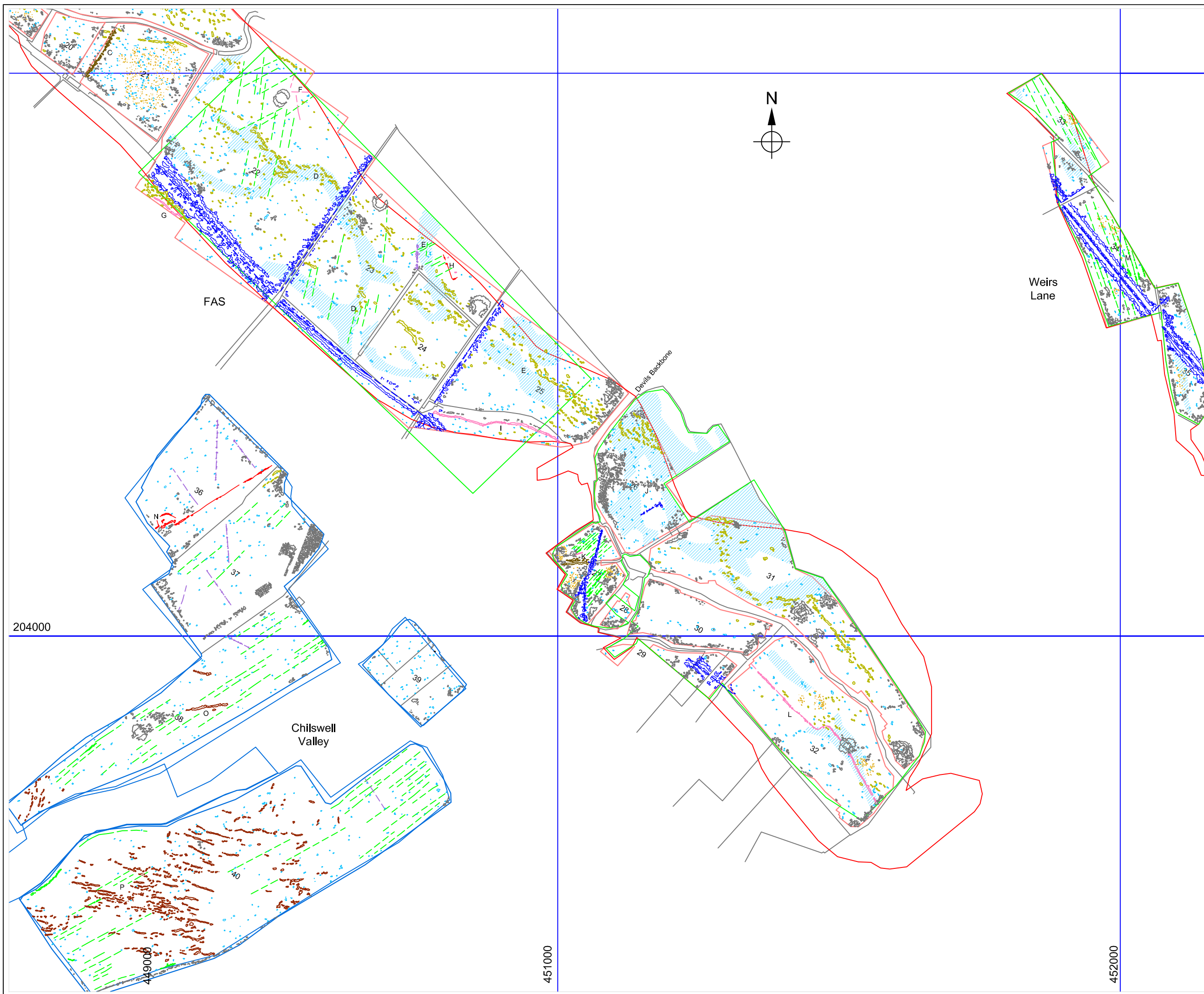
Project
Oxford Flood Alleviation Scheme



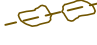









Archaeological Geophysical Survey 2016

Drawing title

Figure 6

Summary of survey interpretations (1/2)



- LEGEND**
-  magnetic anomalies (archaeological ?)
 -  possibly archaeological ?
 -  field boundaries ?
 -  strong (recent ?) magnetic disturbances
 -  other areas of increased background magnetic activity (partly natural ?)
 -  broad / irregular magnetic anomalies (silt deposition on floodplain ?)
 -  other natural channels or hollows (on higher ground)
 -  land drains
 -  cultivation ?
 -  pipe
 -  strong (ferrous) magnetic anomalies
 -  approximate extent of high conductivity anomalies (from 2m depth EM data)

0 250m
Scale 1:6250 @ A3

Surveyed by Bartlett Clark Consultancy (01865 200864)
for
Oxford Archaeology Ltd
Janus House
Osney Mead
Oxford
Oxfordshire OX2 0ES

Project
Oxford Flood Alleviation Scheme
Archaeological Geophysical Survey 2016

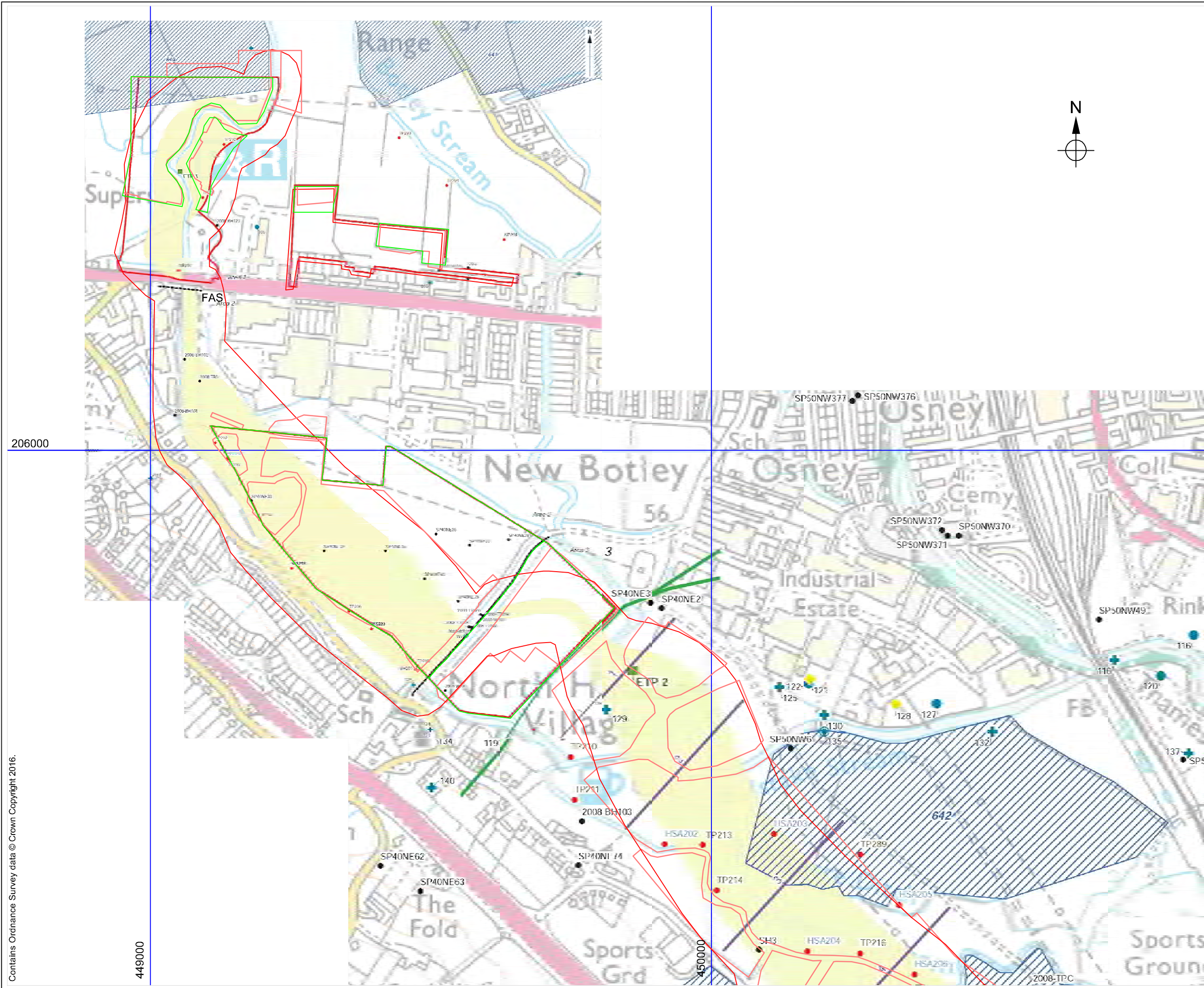
Drawing title
Figure 7
Summary of survey interpretations (2/2)

204000

449000

451000

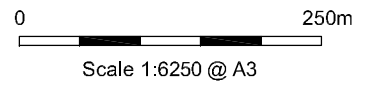
452000



LEGEND

- Proposed Electromagnetic (EM) Survey area
- Combined area of channel options
- Proposed ETP locations
- 2015 Geotechnical Interventions
- Historic Boreholes
- Area Boundaries
- Archaeological Areas
- Building
- ◆ Evaluation
- + Findspot
- Monument
- Other
- Archaeological feature
- Scheduled Monument

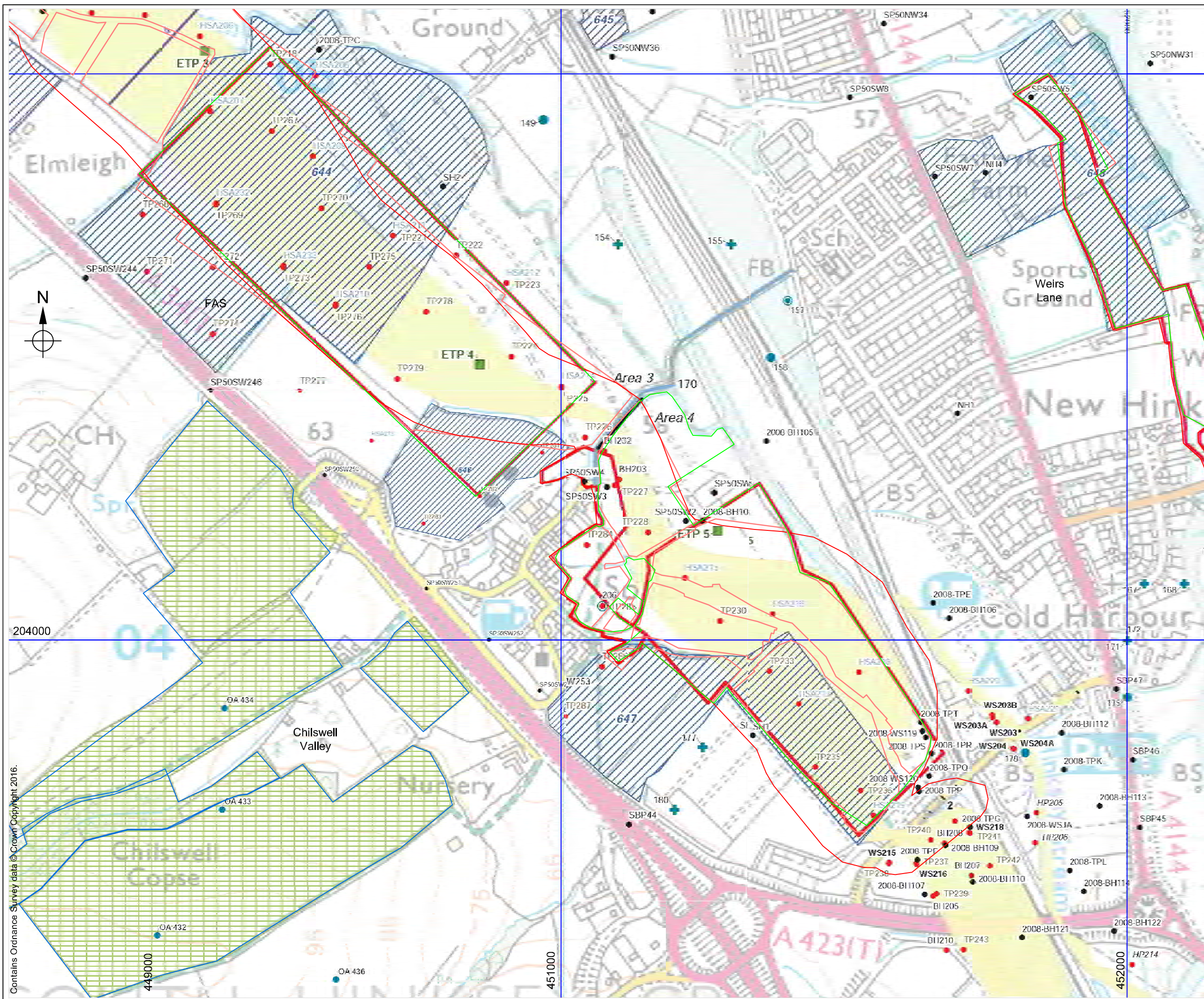
Map reproduced from OA WSI figures 2-5



Surveyed by Bartlett Clark Consultancy (01865 200864)
 for
 Oxford Archaeology Ltd
 Janus House
 Osney Mead
 Oxford
 Oxfordshire OX2 0ES

Project
Oxford Flood Alleviation Scheme
 Archaeological Geophysical Survey 2016

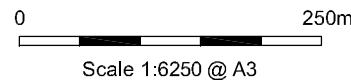
Drawing title
Figure 8
 Survey location with previously identified archaeological findings (1/2)



LEGEND

- Proposed Electromagnetic (EM) Survey area
- Combined area of channel options
- Proposed ETP locations
- 2015 Geotechnical Interventions
- Historic Boreholes
- Area Boundaries
- Archaeological Areas
- Building
- + Evaluation
- + Findspot
- Monument
- Other
- Archaeological feature
- Scheduled Monument

Map reproduced from OA WSI figures 2-5



Surveyed by Bartlett Clark Consultancy (01865 200864)

for
Oxford Archaeology Ltd
Janus House
Osney Mead
Oxford
Oxfordshire OX2 0ES

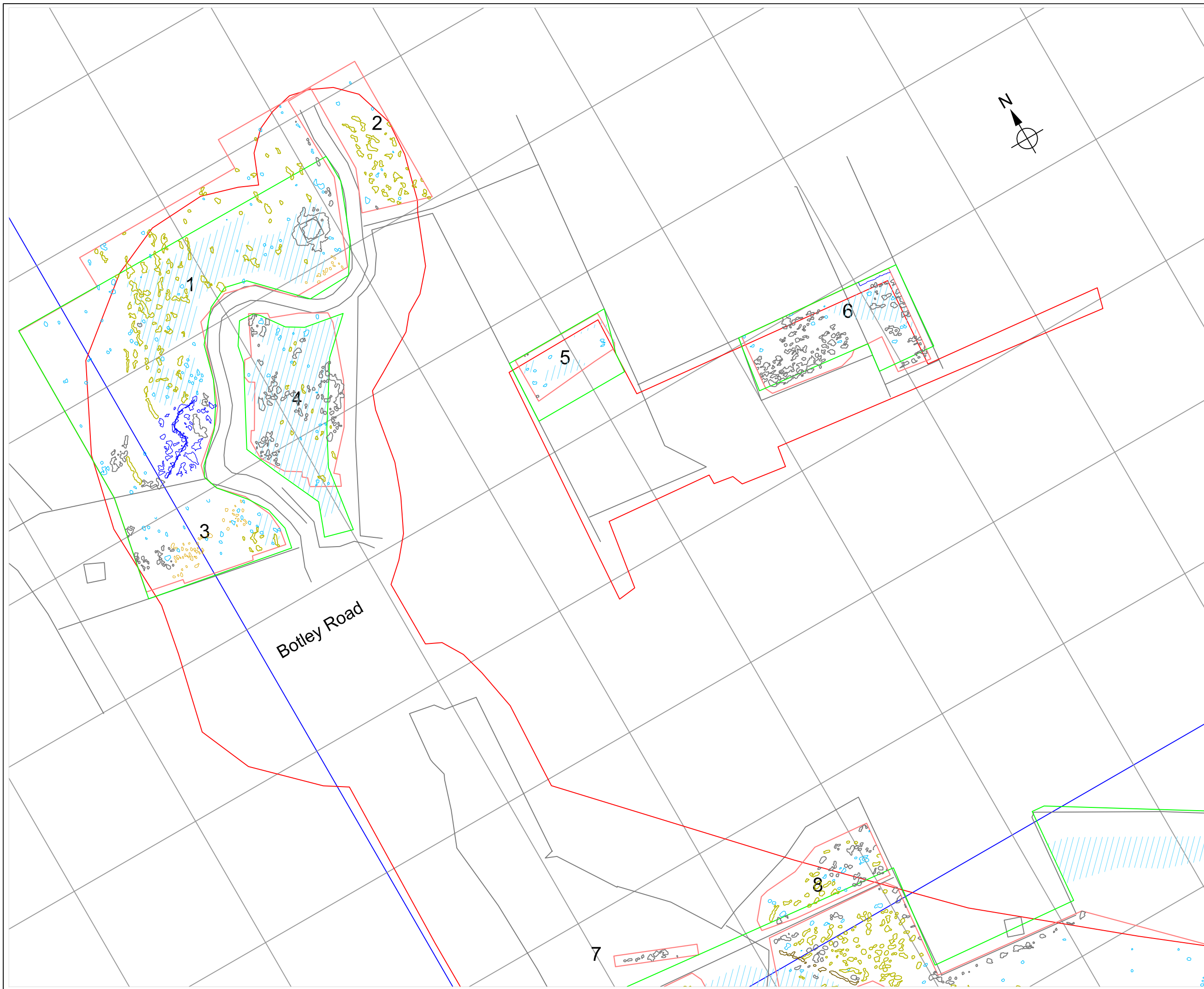
Project
Oxford Flood Alleviation Scheme

Archaeological Geophysical Survey 2016



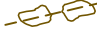








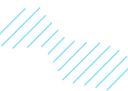
Drawing title
Figure 9


Survey location with previously identified archaeological findings (2/2)

Contains Ordnance Survey data © Crown Copyright 2016.



LEGEND

-  magnetic anomalies (archaeological ?)
-  possibly archaeological ?
-  field boundaries ?
-  strong (recent ?) magnetic disturbances
-  other areas of increased background magnetic activity (partly natural ?)
-  broad / irregular magnetic anomalies (silt deposition on floodplain ?)
-  other natural channels or hollows (on higher ground)
-  land drains
-  cultivation ?
-  pipe
-  strong (ferrous) magnetic anomalies
-  approximate extent of high conductivity anomalies (from 2m depth EM data)

0  100m
Scale 1:2500 @ A3

Surveyed by Bartlett Clark Consultancy (01865 200864)

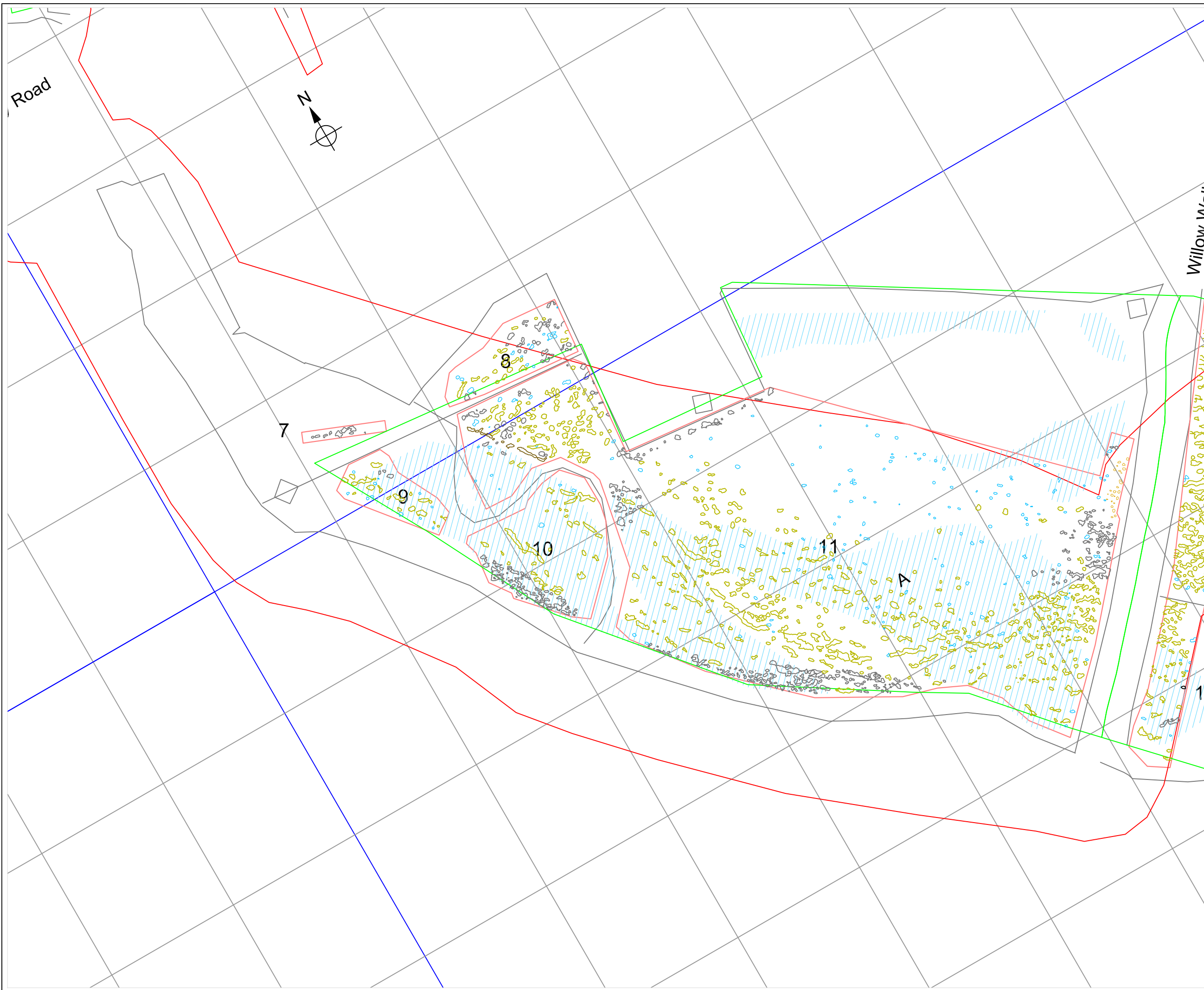
for
Oxford Archaeology Ltd
Janus House
Osney Mead
Oxford
Oxfordshire OX2 0ES

Project
Oxford Flood Alleviation Scheme



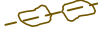









Archaeological Geophysical Survey 2016

Drawing title
Figure 10

Magnetometer survey: interpretation (1/9)



LEGEND

-  magnetic anomalies (archaeological ?)
-  possibly archaeological ?
-  field boundaries ?
-  strong (recent ?) magnetic disturbances
-  other areas of increased background magnetic activity (partly natural ?)
-  broad / irregular magnetic anomalies (silt deposition on floodplain ?)
-  other natural channels or hollows (on higher ground)
-  land drains
-  cultivation ?
-  pipe
-  strong (ferrous) magnetic anomalies
-  approximate extent of high conductivity anomalies (from 2m depth EM data)

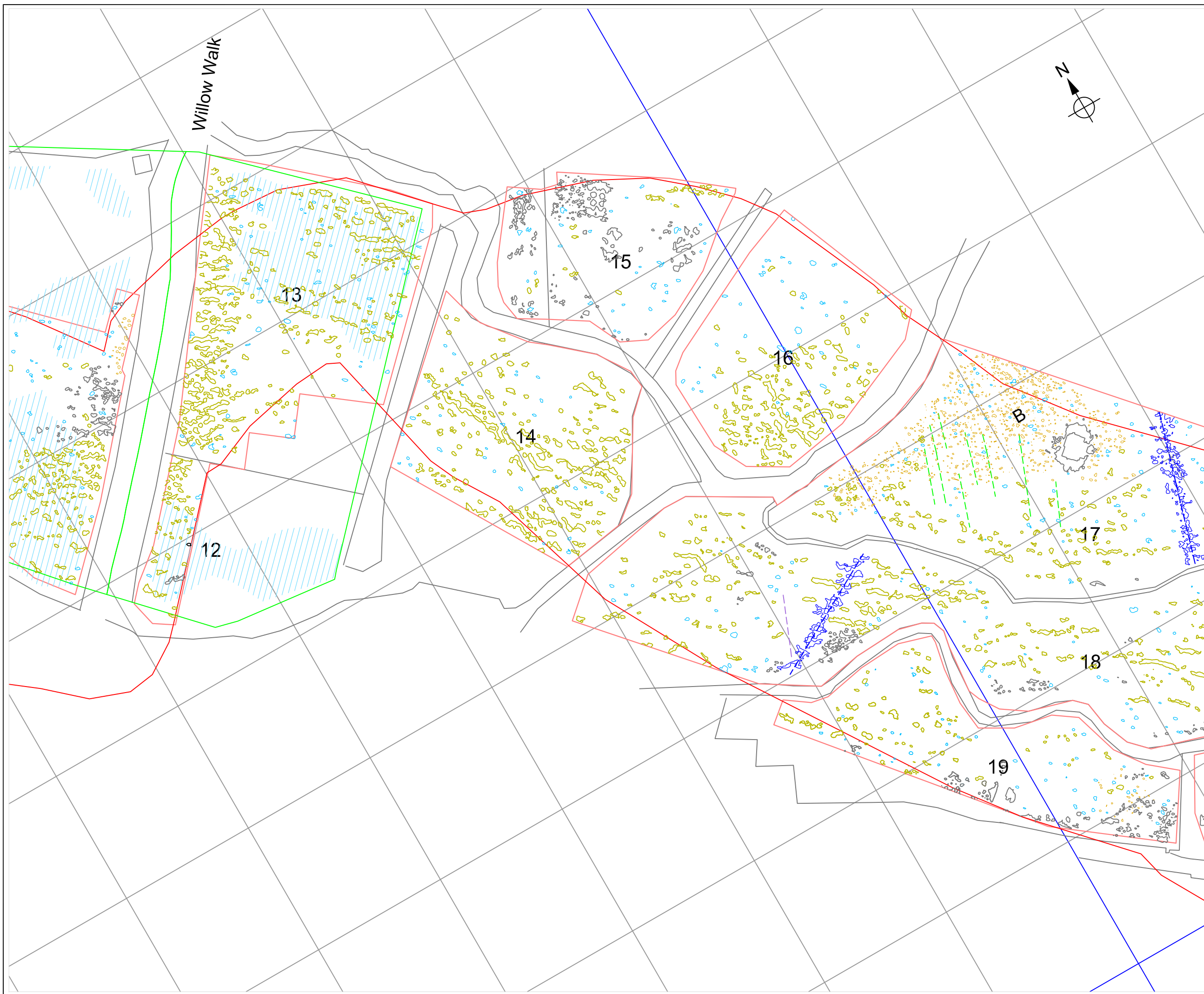
0 100m
Scale 1:2500 @ A3

Surveyed by Bartlett Clark Consultancy
(01865 200864)



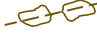









for
Oxford Archaeology Ltd
Janus House
Osney Mead
Oxford
Oxfordshire OX2 0ES

Project
Oxford Flood Alleviation Scheme
Archaeological Geophysical Survey 2016

Drawing title
Figure 11
Magnetometer survey:
interpretation
(2/9)



LEGEND

-  magnetic anomalies (archaeological ?)
-  possibly archaeological ?
-  field boundaries ?
-  strong (recent ?) magnetic disturbances
-  other areas of increased background magnetic activity (partly natural ?)
-  broad / irregular magnetic anomalies (silt deposition on floodplain ?)
-  other natural channels or hollows (on higher ground)
-  land drains
-  cultivation ?
-  pipe
-  strong (ferrous) magnetic anomalies
-  approximate extent of high conductivity anomalies (from 2m depth EM data)

0 100m
Scale 1:2500 @ A3

Surveyed by Bartlett Clark Consultancy
(01865 200864)

for
Oxford Archaeology Ltd
Janus House
Osney Mead
Oxford
Oxfordshire OX2 0ES

Project
**Oxford Flood Alleviation
Scheme**

**Archaeological Geophysical
Survey 2016**

Drawing title

**Figure 12
Magnetometer survey:
interpretation
(3/9)**