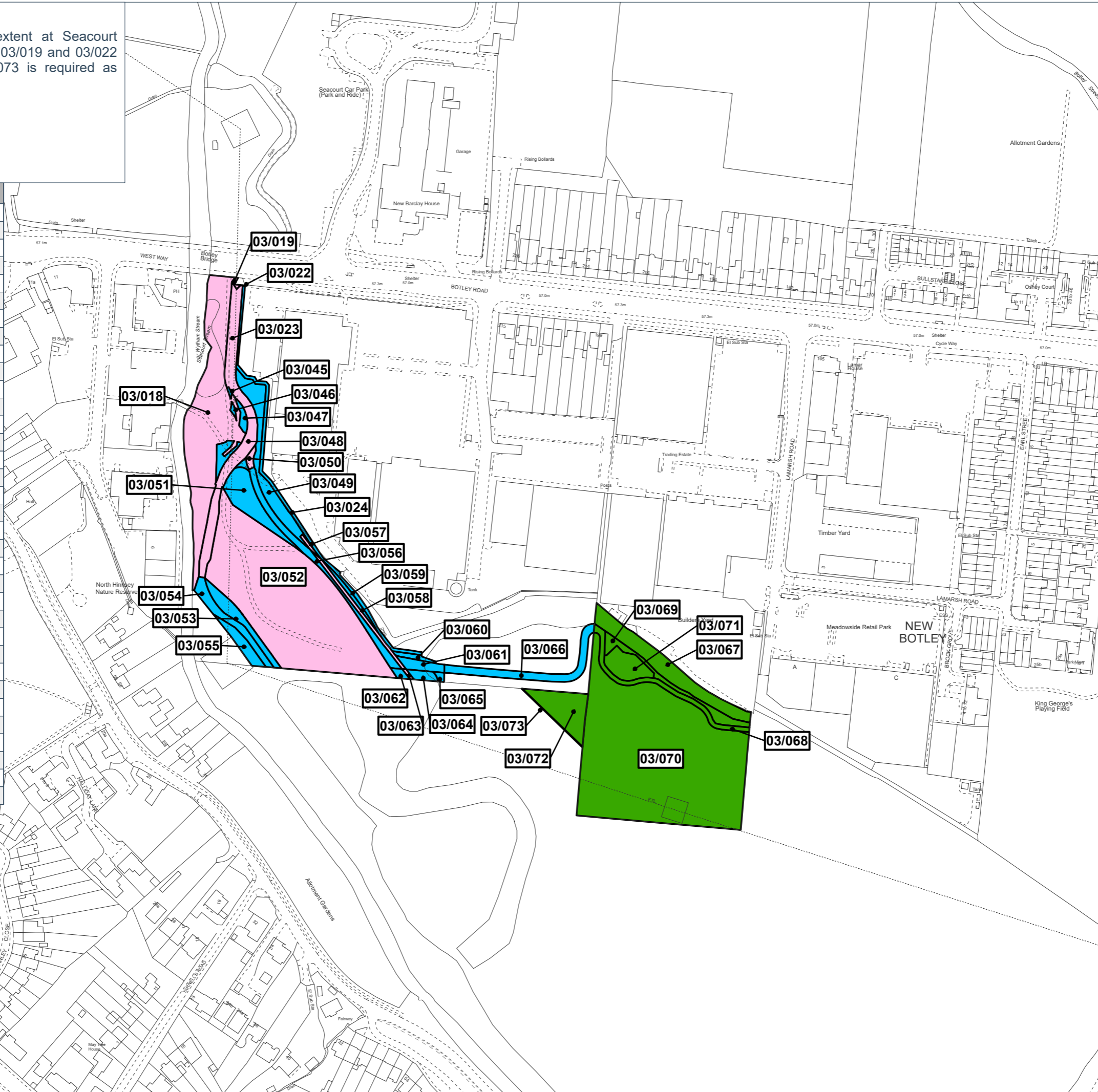


Seacourt Nature Park

Alternative A - the digital highway extent at Seacourt Nature Park is not challenged and plots 03/019 and 03/022 are classed as Open Space. Plot 03/073 is required as exchange land.

- Key:**
- Acquisition of Land
 - Acquisition of New Rights
 - Acquisition of Exchange Land
 - 01/001 Owned by Oxford City Council

Plot Number	Category
03/018	Open Space
03/019	Open Space (not highway land)
03/022	Open Space (not highway land)
03/023	Open Space
03/024	Open Space
03/045	Open Space
03/046	Open Space
03/047	Open Space
03/048	Open Space
03/049	Open Space
03/050	Open Space
03/051	Open Space
03/052	Open Space
03/053	Open Space
03/054	Open Space
03/055	Open Space
03/056	Open Space
03/057	Open Space
03/058	Open Space
03/059	Open Space
03/060	Open Space
03/061	Open Space
03/062	Open Space
03/063	Open Space
03/064	Open Space
03/065	Open Space
03/066	Open Space
03/067	Exchange Land
03/068	Exchange Land
03/069	Exchange Land
03/070	Exchange Land
03/071	Exchange Land
03/072	Exchange Land
03/073	Exchange Land



Notes:

Coordinate System: British National Grid
 Projection: Transverse Mercator
 Datum: OSGB 1936

Interest: N/A
Location: Land at Seacourt Nature Park, Botley Road, Oxford, OX2 0HW

Coords: 449209, 206112

Scheme Name: Oxford Flood Alleviation Scheme

Drawing Name: Information Plan - Seacourt Nature Park - Alternative A

Drawing No: 160433_PLN_INFO_945.1

Rev	Date	Description
-	17.11.2023	First Issue

Drawn: PR
Approved: MT
Sheet No: 1 of 2
Sheet Size: A3



The information contained in this document is confidential and protected by copyright. The use, copying or disclosure to a third party, either wholly or in part, except with the written permission of, and in the manner prescribed by Environment Agency constitutes an infringement of copyright. Dalcour Maclaren does not warrant that this document is definitive nor free of error and does not accept liability for any loss caused or arising from reliance upon information provided herein. Although our best efforts have been made to ensure the accuracy of these plans, all measurements must be confirmed on site. BASED UPON THE ORDNANCE SURVEY MAP WITH THE SANCTION OF THE CONTROLLER OF H.M. STATIONERY OFFICE. CROWN COPYRIGHT RESERVED. © OS LICENCE No. 100024198

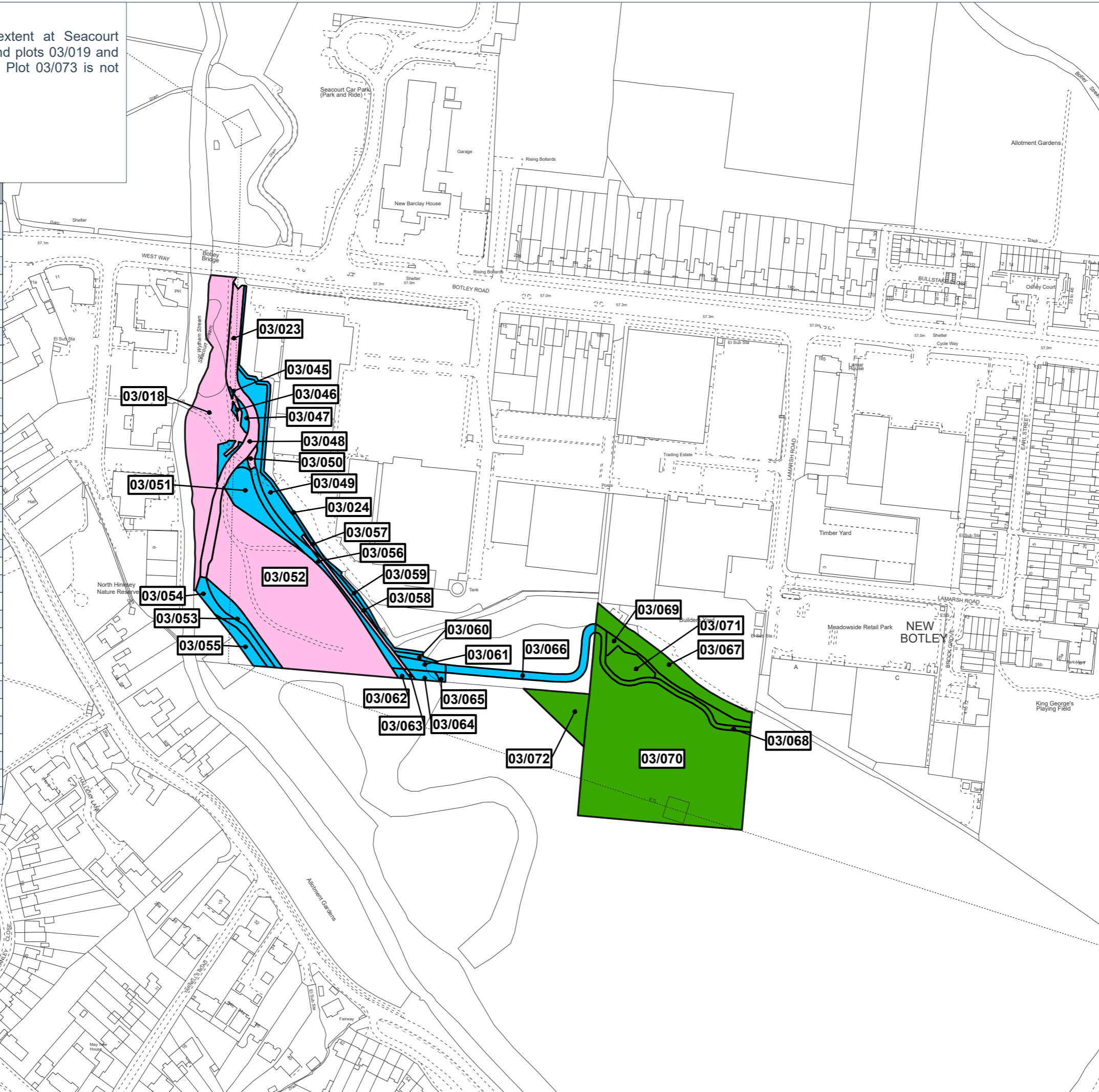
Drawing Location: C:\Users\PHILIPRES\Dalcour Maclaren\Oxford FAS - Geomatics\01 DM Plans\2023\1027_160433_OFAS_Section19_Plans\2023\1027_160433_OFAS_Section19_Plans.aprx

Seacourt Nature Park

Alternative B - the digital highway extent at Seacourt Nature Park is successfully challenged and plots 03/019 and 03/022 are not classed as open space. Plot 03/073 is not required as exchange land.

- Key:**
- Acquisition of Land
 - Acquisition of New Rights
 - Acquisition of Exchange Land
 - 01/001 Owned by Oxford City Council

Plot Number	Category
03/018	Open Space
03/019	Highway land (not open space)
03/022	Highway land (not open space)
03/023	Open Space
03/024	Open Space
03/045	Open Space
03/046	Open Space
03/047	Open Space
03/048	Open Space
03/049	Open Space
03/050	Open Space
03/051	Open Space
03/052	Open Space
03/053	Open Space
03/054	Open Space
03/055	Open Space
03/056	Open Space
03/057	Open Space
03/058	Open Space
03/059	Open Space
03/060	Open Space
03/061	Open Space
03/062	Open Space
03/063	Open Space
03/064	Open Space
03/065	Open Space
03/066	Open Space
03/067	Exchange Land
03/068	Exchange Land
03/069	Exchange Land
03/070	Exchange Land
03/071	Exchange Land
03/072	Exchange Land
03/073	Not used



Notes:

Coordinate System: British National Grid
 Projection: Transverse Mercator
 Datum: OSGB 1936

Interest:
N/A

Location:
Land at Seacourt Nature Park, Botley Road, Oxford, OX2 0HW

Coords: 449209, 206112

Scheme Name:
Oxford Flood Alleviation Scheme

Drawing Name:
Information Plan - Seacourt Nature Park - Alternative B

Drawing No: 160433_PLN_INFO_945.2

Rev	Date	Description
-	17.11.2023	First Issue

Drawn:	PR
Approved:	MT
Sheet No:	2 of 2
Sheet Size:	A3



The information contained in this document is confidential and protected by copyright. The use, copying or disclosure to a third party, either wholly or in part, except with the written permission of, and in the manner prescribed by Environment Agency constitutes an infringement of copyright. Dalcour Maclaren does not warrant that this document is definitive nor free of error and does not accept liability for any loss caused or arising from reliance upon information provided herein. Although our best efforts have been made to ensure the accuracy of these plans, all measurements must be confirmed on site. BASED UPON THE ORDNANCE SURVEY MAP WITH THE SANCTION OF THE CONTROLLER OF H.M. STATIONERY OFFICE. CROWN COPYRIGHT RESERVED. © OS LICENCE No. 100024198