

Kendall Copse

Alternative A1 - The digital highway extent at Egrove Park is not challenged and plots 13/015, 13/017, 13/018 and 13/022 cannot be used as Exchange Land. The digital highway extent at Kendall Copse is not challenge and 11/067 is classified as open space, so plot 13/020 is required as exchange land.

Key:

- Acquisition of Land
- Acquisition of New Rights
- Acquisition of Exchange Land
- 01/001 Owned by Oxford City Council
- 01/001 Owned by Oxfordshire County Council
- 01/001 Ownership unknown where Exchange Land is to be vested to Oxford City Council

Notes:

Coordinate System: British National Grid
 Projection: Transverse Mercator
 Datum: OSGB 1936

Interest:
N/A

Location:
Land at Kendall Copse and Egrove Park, Kennington, Oxford, OX1 4XP

Coords: 451654, 203551

Scheme Name:
Oxford Flood Alleviation Scheme

Drawing Name:
Information Plan - Kendall Copse - Alternative A1

Drawing No: 160433_PLN_INFO_941.1

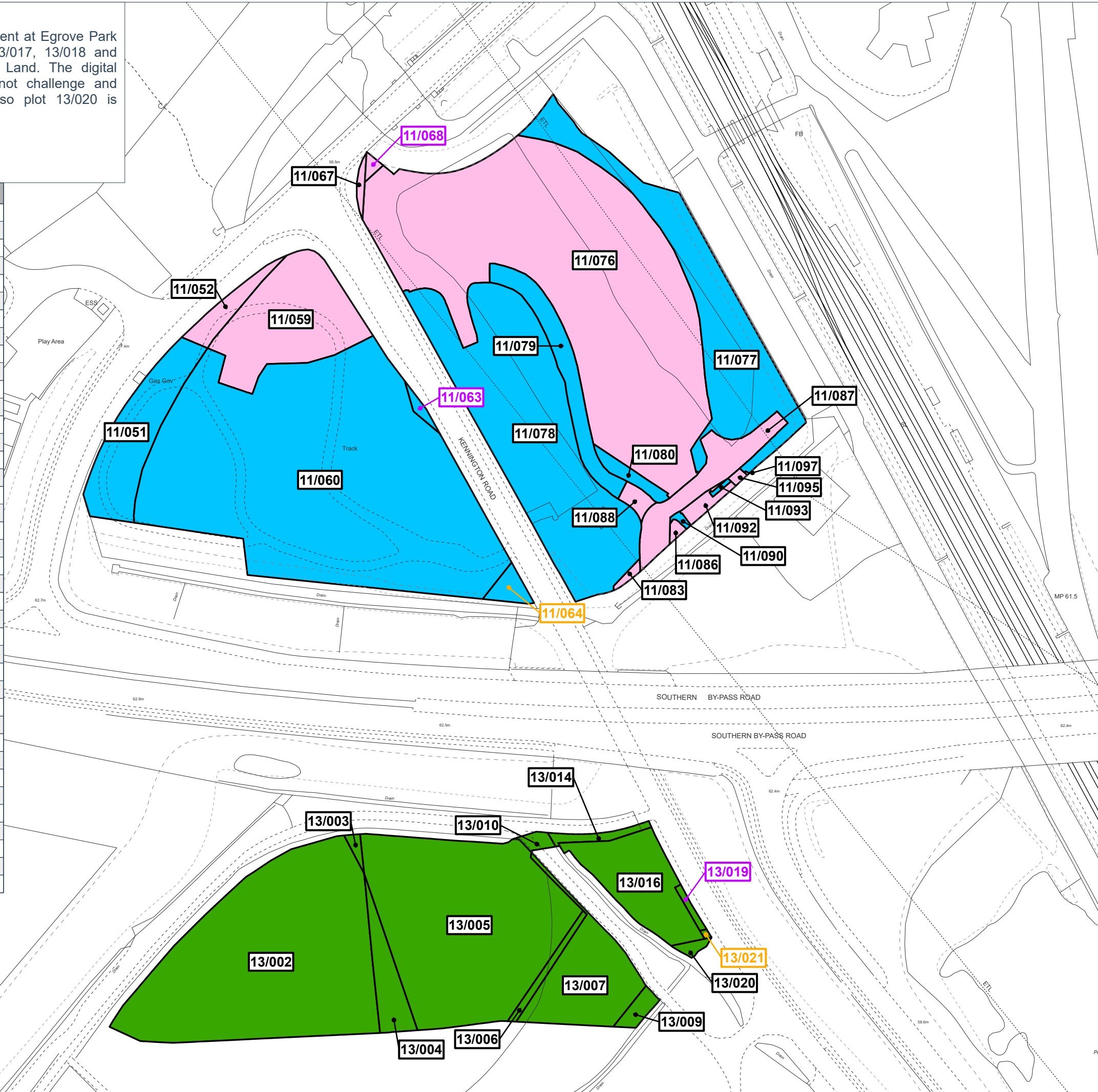
Rev	Date	Description
-	17.11.2023	First Issue

Drawn: PR
Approved: MT
Sheet No: 1 of 4
Sheet Size: A3



The information contained in this document is confidential and protected by copyright. The use, copying or disclosure to a third party, either wholly or in part, except with the written permission of, and in the manner prescribed by Environment Agency constitutes an infringement of copyright. Dalcour Maclaren does not warrant that this document is definitive nor free of error and does not accept liability for any loss caused or arising from reliance upon information provided herein. Although our best efforts have been made to ensure the accuracy of these plans, all measurements must be confirmed on site. BASED UPON THE ORDNANCE SURVEY MAP WITH THE SANCTION OF THE CONTROLLER OF H.M. STATIONERY OFFICE. CROWN COPYRIGHT RESERVED. © OS LICENCE No. 100024198

Plot Number	Category
11/051	Open Space
11/052	Open Space
11/059	Open Space
11/060	Open Space
11/063	Open Space
11/064	Open Space
11/067	Open Space (not highway land)
11/068	Open Space
11/076	Open Space
11/077	Open Space
11/078	Open Space
11/079	Open Space
11/080	Open Space
11/083	Open Space
11/086	Open Space
11/087	Open Space
11/088	Open Space
11/090	Open Space
11/092	Open Space
11/093	Open Space
11/095	Open Space
11/097	Open Space
13/002	Exchange Land
13/003	Exchange Land
13/004	Exchange Land
13/005	Exchange Land
13/006	Exchange Land
13/007	Exchange Land
13/009	Exchange Land
13/010	Exchange Land
13/014	Exchange Land
13/015	Not used (highway land)
13/016	Exchange Land
13/017	Not used (highway land)
13/018	Not used (highway land)
13/019	Exchange Land
13/020	Exchange Land (for 11/067)
13/021	Exchange Land
13/022	Not used (highway land)



Drawing Location: C:\Users\PHILREES\Documents\Oxford FAS - Geomatics\01 DM Plans\2023\1027_160433_OFAS_Section19_Plans\2023\1027_160433_OFAS_Section19_Plans.aprx

Kendall Copse

Alternative A2 - The digital highway extent at Egrove Park is not challenged and plots 13/015, 13/017, 13/018 and 13/022 cannot be used as Exchange Land. The digital highway extent at Kendall Copse is successfully challenged and 11/067 is not classified as open space, so plot 13/020 is not required as exchange land.



- Key:**
- Acquisition of Land
 - Acquisition of New Rights
 - Acquisition of Exchange Land
 - 01/001 Owned by Oxford City Council
 - 01/001 Owned by Oxfordshire County Council
 - 01/001 Ownership unknown where Exchange Land is to be vested to Oxford City Council

Notes:

Coordinate System: British National Grid
 Projection: Transverse Mercator
 Datum: OSGB 1936

Interest:
N/A

Location:
Land at Kendall Copse and Egrove Park, Kennington, Oxford, OX1 4XP

Coords: 451654, 203551

Scheme Name:
Oxford Flood Alleviation Scheme

Drawing Name:
Information Plan - Kendall Copse - Alternative A2

Drawing No: 160433_PLN_INFO_941.2

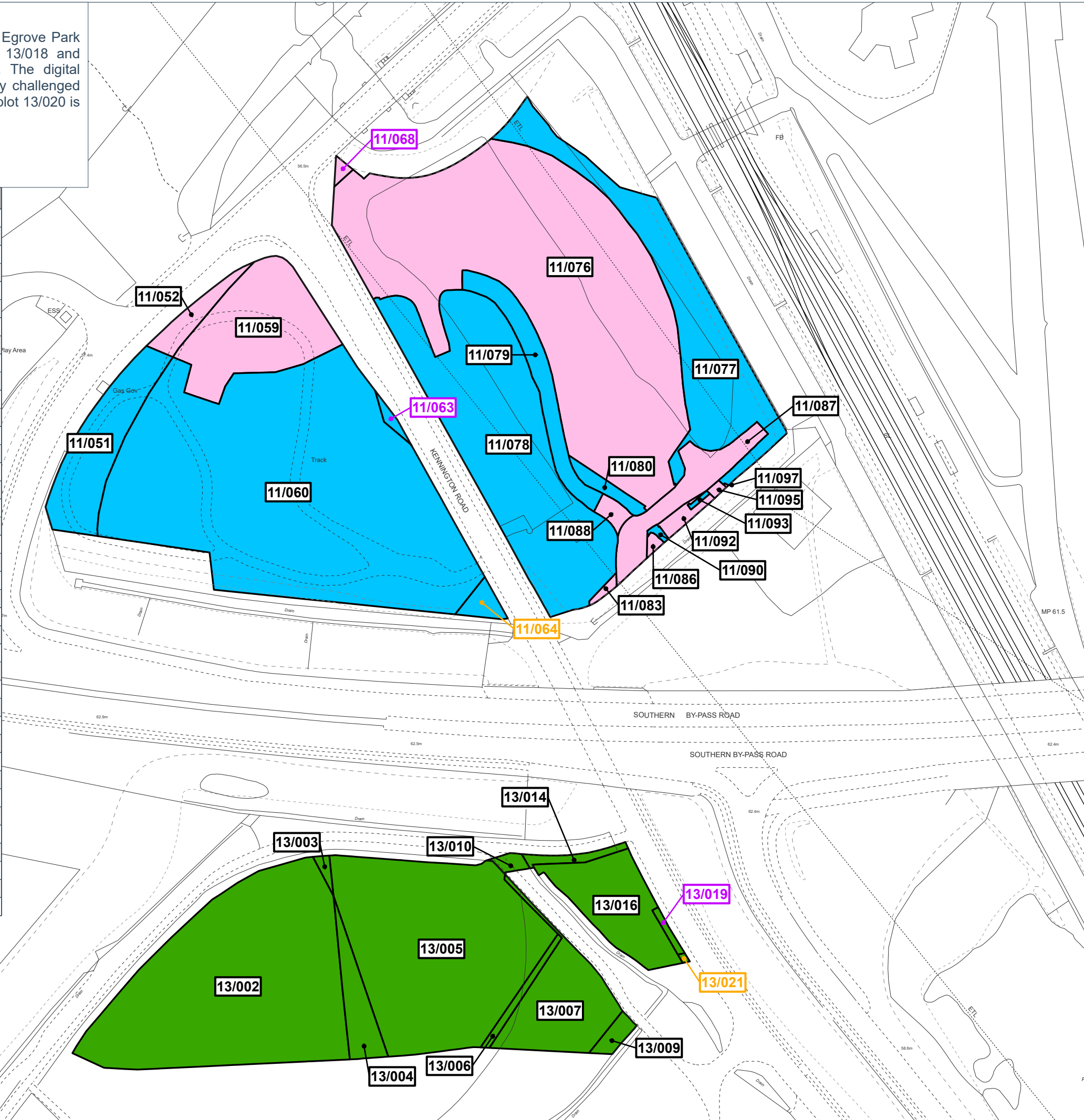
Rev	Date	Description
-	17.11.2023	First Issue

Drawn:	PR
Approved:	MT
Sheet No:	2 of 4
Sheet Size:	A3

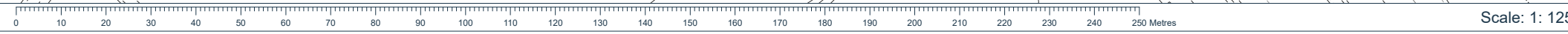


The information contained in this document is confidential and protected by copyright. The use, copying or disclosure to a third party, either wholly or in part, except with the written permission of, and in the manner prescribed by Environment Agency constitutes an infringement of copyright. Dalcour Maclaren does not warrant that this document is definitive nor free of error and does not accept liability for any loss caused or arising from reliance upon information provided herein. Although our best efforts have been made to ensure the accuracy of these plans, all measurements must be confirmed on site. BASED UPON THE ORDINANCE SURVEY MAP WITH THE SANCTION OF THE CONTROLLER OF H.M. STATIONERY OFFICE. CROWN COPYRIGHT RESERVED. © OS LICENCE No. 100024198

Plot Number	Category
11/051	Open Space
11/052	Open Space
11/059	Open Space
11/060	Open Space
11/063	Open Space
11/064	Open Space
11/067	Not open space (highway land)
11/068	Open Space
11/076	Open Space
11/077	Open Space
11/078	Open Space
11/079	Open Space
11/080	Open Space
11/083	Open Space
11/086	Open Space
11/087	Open Space
11/088	Open Space
11/090	Open Space
11/092	Open Space
11/093	Open Space
11/095	Open Space
11/097	Open Space
13/002	Exchange Land
13/003	Exchange Land
13/004	Exchange Land
13/005	Exchange Land
13/006	Exchange Land
13/007	Exchange Land
13/009	Exchange Land
13/010	Exchange Land
13/014	Exchange Land
13/015	Not used (highway land)
13/016	Exchange Land
13/017	Not used (highway land)
13/018	Not used (highway land)
13/019	Exchange Land
13/020	Not used (as 11/067 is not open space)
13/021	Exchange Land
13/022	Not used (highway land)



Site Plan



Drawing Location: C:\Users\PHILREES\Documents\Oxford FAS - Geomatics\01 DM Plans\2023\1027_160433_OFAS_Section19_Plans\2023\1027_160433_OFAS_Section19_Plans.aprx

Kendall Copse

Alternative B1 - The digital highway extent at Egrove Park is successfully challenged and plots 13/015, 13/017, 13/018 and 13/022 are needed to be used as Exchange Land, Plot 13/009 will not be needed for Exchange Land. The digital highway extent at Kendall Copse is not challenged and 11/067 is classified as open space, so plot 13/020 is required as exchange land.

- Key:**
- Acquisition of Land
 - Acquisition of New Rights
 - Acquisition of Exchange Land
 - 01/001 Owned by Oxford City Council
 - 01/001 Owned by Oxfordshire County Council
 - 01/001 Ownership unknown where Exchange Land is to be vested to Oxford City Council

Notes:

Coordinate System: British National Grid
 Projection: Transverse Mercator
 Datum: OSGB 1936

Interest:
N/A

Location:
Land at Kendall Copse and Egrove Park, Kennington, Oxford, OX1 4XP

Coords: 451654, 203551

Scheme Name:
Oxford Flood Alleviation Scheme

Drawing Name:
Information Plan - Kendall Copse - Alternative B1

Drawing No: 160433_PLN_INFO_941.3

Rev	Date	Description
-	17.11.2023	First Issue

Drawn: PR

Approved: MT

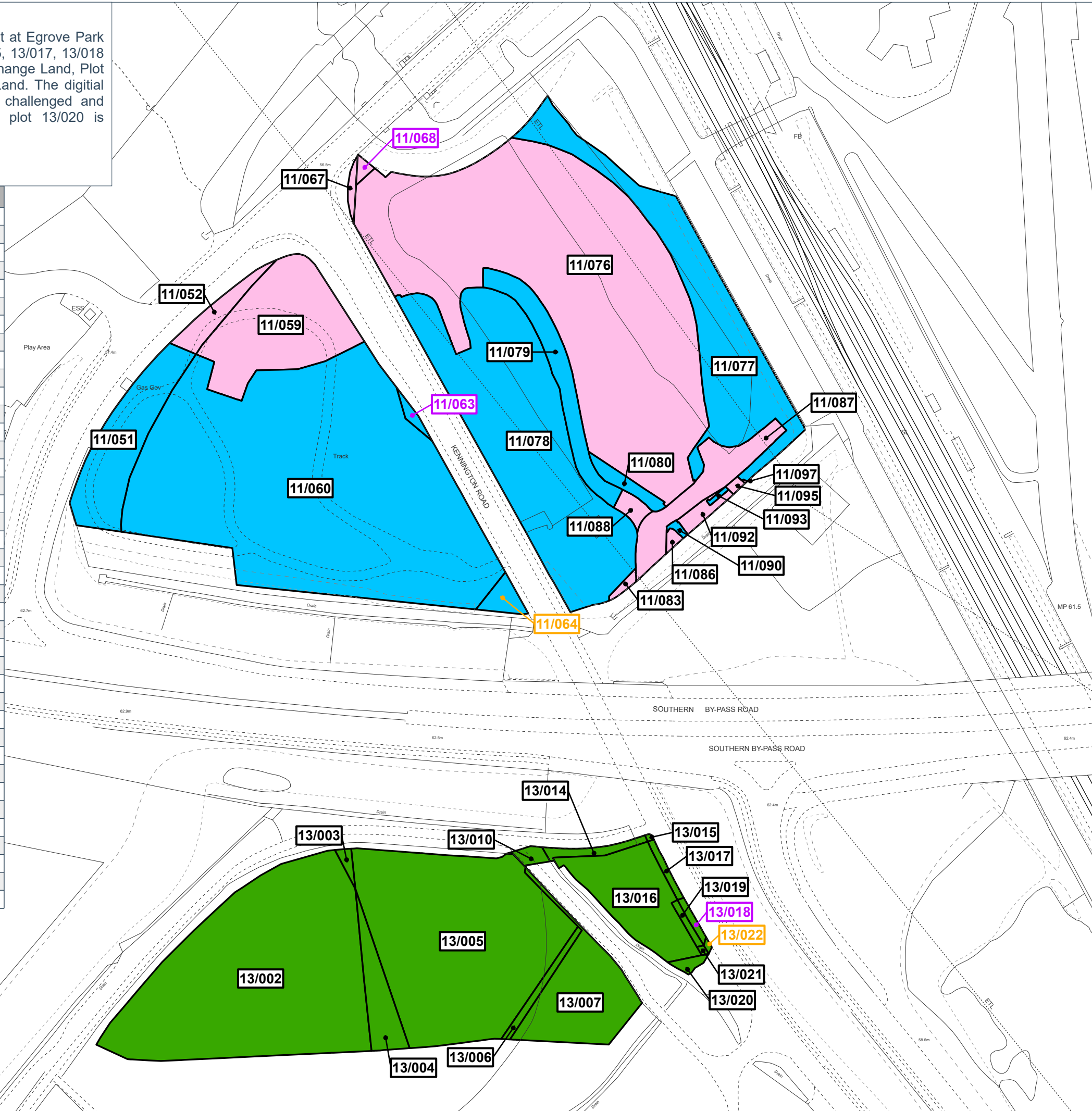
Sheet No: 3 of 4

Sheet Size: A3

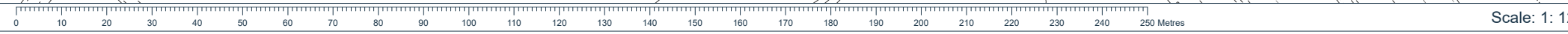


The information contained in this document is confidential and protected by copyright. The use, copying or disclosure to a third party, either wholly or in part, except with the written permission of, and in the manner prescribed by Environment Agency constitutes an infringement of copyright. Dalcour Maclaren does not warrant that this document is definitive nor free of error and does not accept liability for any loss caused or arising from reliance upon information provided herein. Although our best efforts have been made to ensure the accuracy of these plans, all measurements must be confirmed on site. BASED UPON THE ORDINANCE SURVEY MAP WITH THE SANCTION OF THE CONTROLLER OF H.M. STATIONERY OFFICE. CROWN COPYRIGHT RESERVED. © OS LICENCE NO. 100024198

Plot Number	Category
11/051	Open Space
11/052	Open Space
11/059	Open Space
11/060	Open Space
11/063	Open Space
11/064	Open Space
11/067	Open Space (not highway land)
11/068	Open Space
11/076	Open Space
11/077	Open Space
11/078	Open Space
11/079	Open Space
11/080	Open Space
11/083	Open Space
11/086	Open Space
11/087	Open Space
11/088	Open Space
11/090	Open Space
11/092	Open Space
11/093	Open Space
11/095	Open Space
11/097	Open Space
13/002	Exchange Land
13/003	Exchange Land
13/004	Exchange Land
13/005	Exchange Land
13/006	Exchange Land
13/007	Exchange Land
13/009	Not used
13/010	Exchange Land
13/014	Exchange Land
13/015	Exchange Land (not highway land)
13/016	Exchange Land
13/017	Exchange Land (not highway land)
13/018	Exchange Land (not highway land)
13/019	Exchange Land
13/020	Exchange Land (for 11/067)
13/021	Exchange Land
13/022	Exchange Land (not highway land)



Site Plan



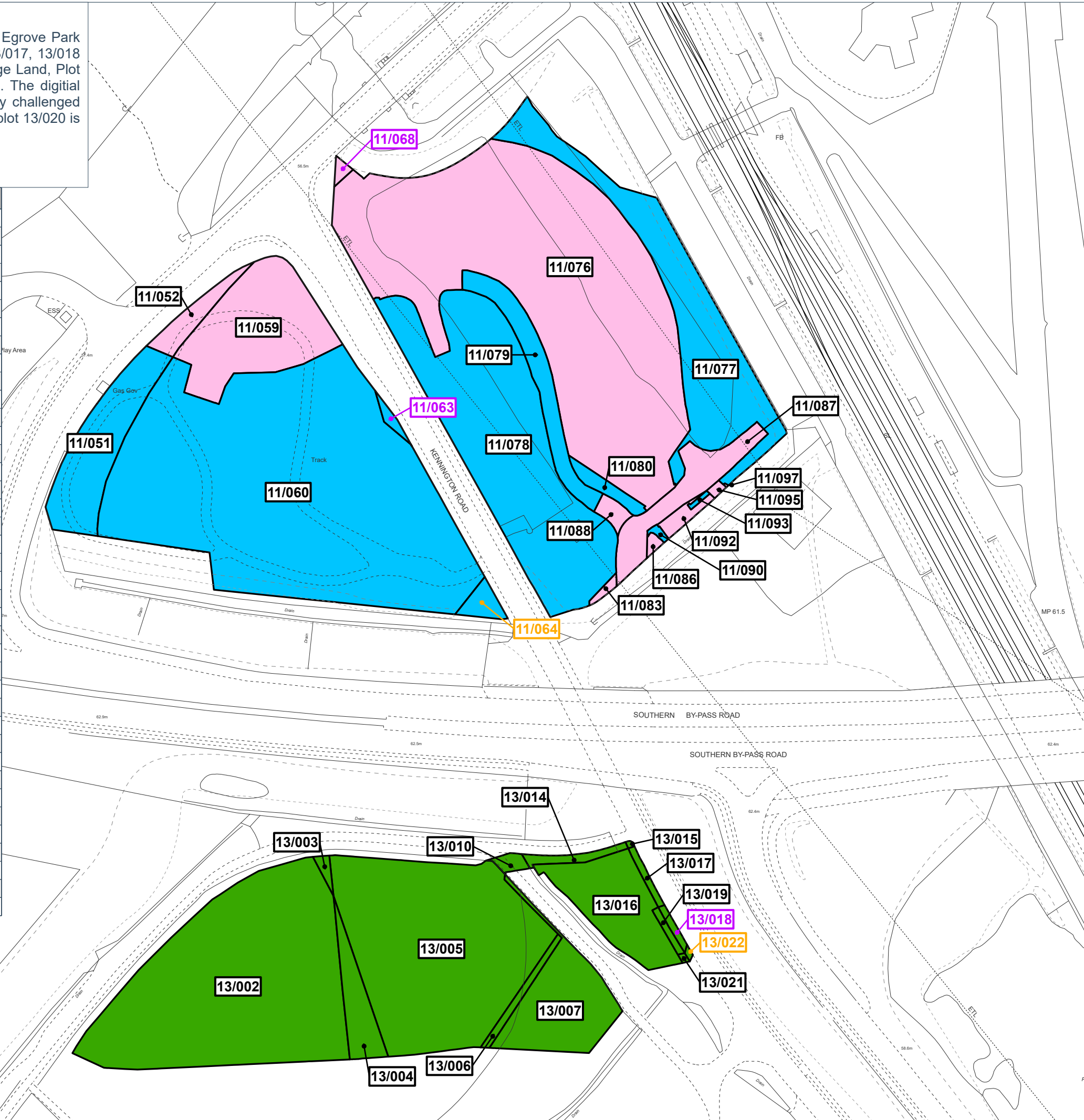
Scale: 1: 1250

Drawing Location: C:\Users\PHILREES\Documents\Oxford FAS - Geomatics\01 DM Plans\2023\1027_160433_OFAS_Section19_Plans\2023\1027_160433_OFAS_Section19_Plans.aprx

Kendall Copse

Alternative B2 - The digital highway extent at Egrove Park is successfully challenged and plots 13/015, 13/017, 13/018 and 13/022 are needed to be used as Exchange Land. Plot 13/009 will not be needed for Exchange Land. The digital highway extent at Kendall Copse is successfully challenged and 11/067 is not classified as open space, so plot 13/020 is not required as exchange land.

Plot Number	Category
11/051	Open Space
11/052	Open Space
11/059	Open Space
11/060	Open Space
11/063	Open Space
11/064	Open Space
11/067	Not open space (highway land)
11/068	Open Space
11/076	Open Space
11/077	Open Space
11/078	Open Space
11/079	Open Space
11/080	Open Space
11/083	Open Space
11/086	Open Space
11/087	Open Space
11/088	Open Space
11/090	Open Space
11/092	Open Space
11/093	Open Space
11/095	Open Space
11/097	Open Space
13/002	Exchange Land
13/003	Exchange Land
13/004	Exchange Land
13/005	Exchange Land
13/006	Exchange Land
13/007	Exchange Land
13/009	Not used
13/010	Exchange Land
13/014	Exchange Land
13/015	Exchange Land (not highway land)
13/016	Exchange Land
13/017	Exchange Land (not highway land)
13/018	Exchange Land (not highway land)
13/019	Exchange Land
13/020	Not used (as 11/067 is not open space)
13/021	Exchange Land
13/022	Exchange Land (not highway land)



Key:

	Acquisition of Land
	Acquisition of New Rights
	Acquisition of Exchange Land
01/001	Owned by Oxford City Council
01/001	Owned by Oxfordshire County Council
01/001	Ownership unknown where Exchange Land is to be vested to Oxford City Council

Notes:

Coordinate System: British National Grid
 Projection: Transverse Mercator
 Datum: OSGB 1936

Interest:
N/A

Location:
Land at Kendall Copse and Egrove Park, Kennington, Oxford, OX1 4XP

Coords: 451654, 203551

Scheme Name:
Oxford Flood Alleviation Scheme

Drawing Name:
Information Plan - Kendall Copse - Alternative B2

Drawing No: 160433_PLN_INFO_941.4

Rev	Date	Description
-	17.11.2023	First Issue

Drawn:	PR
Approved:	MT
Sheet No:	4 of 4
Sheet Size:	A3



The information contained in this document is confidential and protected by copyright. The use, copying or disclosure to a third party, either wholly or in part, except with the written permission of, and in the manner prescribed by Environment Agency constitutes an infringement of copyright. Dalcour Maclaren does not warrant that this document is definitive nor free of error and does not accept liability for any loss caused or arising from reliance upon information provided herein. Although our best efforts have been made to ensure the accuracy of these plans, all measurements must be confirmed on site. BASED UPON THE ORDINANCE SURVEY MAP WITH THE SANCTION OF THE CONTROLLER OF H.M. STATIONERY OFFICE. CROWN COPYRIGHT RESERVED. © OS LICENCE No. 100024198