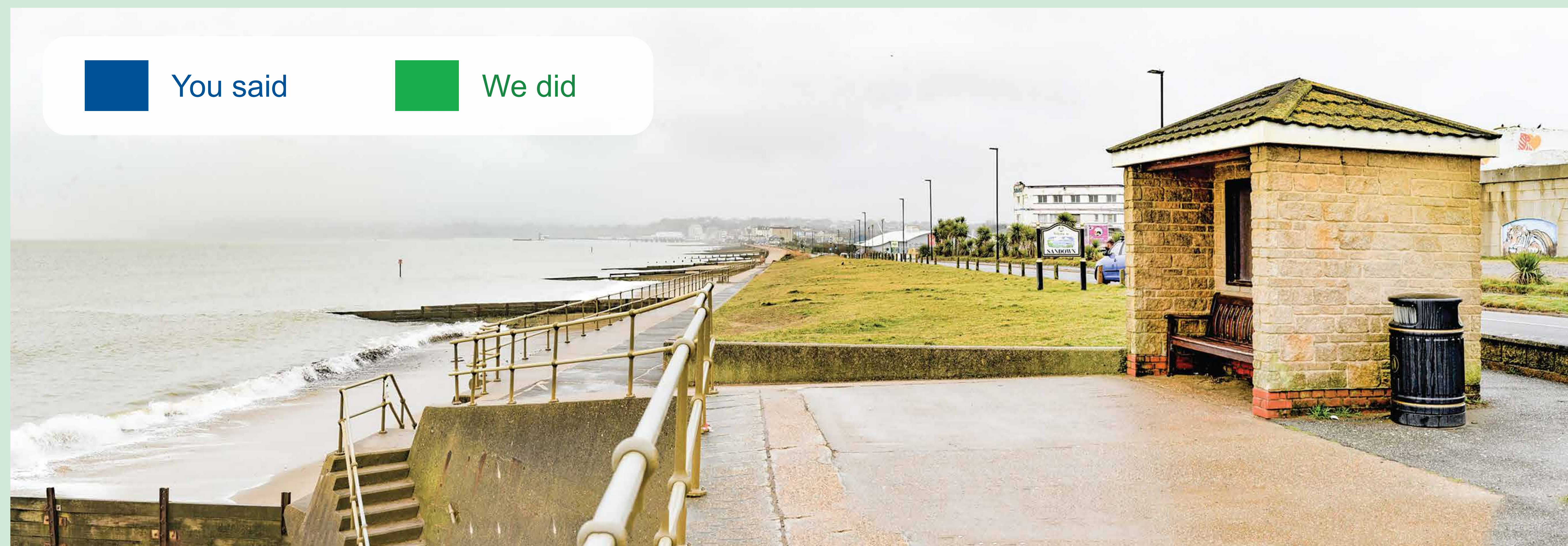


What improvements would you like to see?

Thank you for your comments at the autumn 2023 consultation events. We have identified key themes relating to the scheme design and share your feedback and our actions below.



■ You said ■ We did

Construction

- Completing project in stages would be disruptive
- We will aim to complete the project in one stage of construction work

Pedestrian railings

- There is a large drop from the top of the seawall to the beach
- Design includes pedestrian railings along length of scheme

Access

- Improve access to the beach
- The Environment Agency are seeking independent advice to improve disabled access to the beach where feasible

Aesthetics

- Improve appearance of seawall
- Investigating options for the seawall finish, including the possibility of incorporating artwork

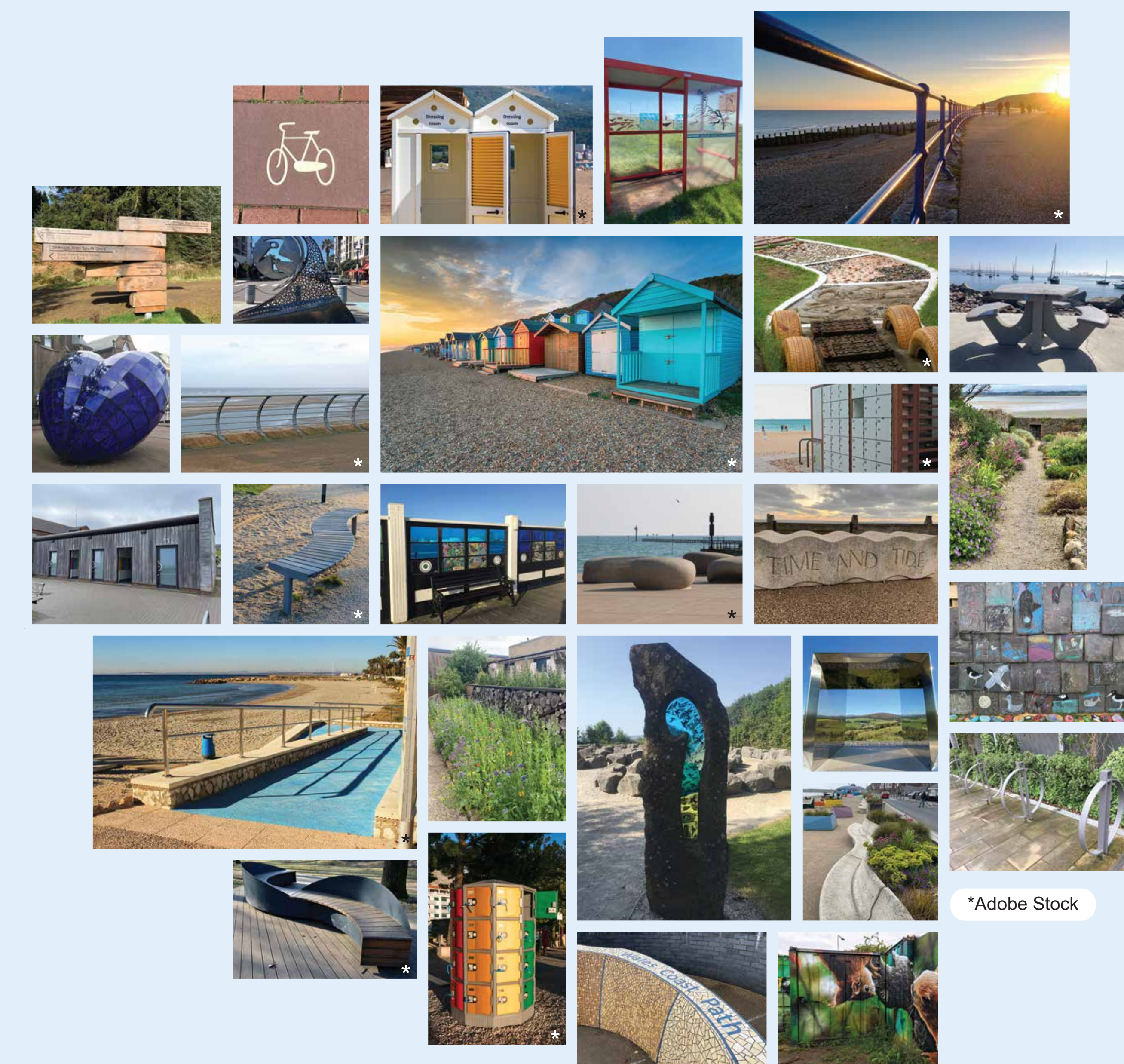
Biodiversity

- Encourage and increase local biodiversity, e.g. coastal flora
- Identifying environmental, habitat and landscaping enhancement opportunities

Highway drainage

- Sand drifts on to the road and affects drainage
- Working with Island Roads to ensure the design maintains existing drainage and incorporates improvements where feasible

We have been collecting ideas for landscape improvements. What do you think?



Please share your ideas using the contact details below.



Scan the QR code to give us your feedback.