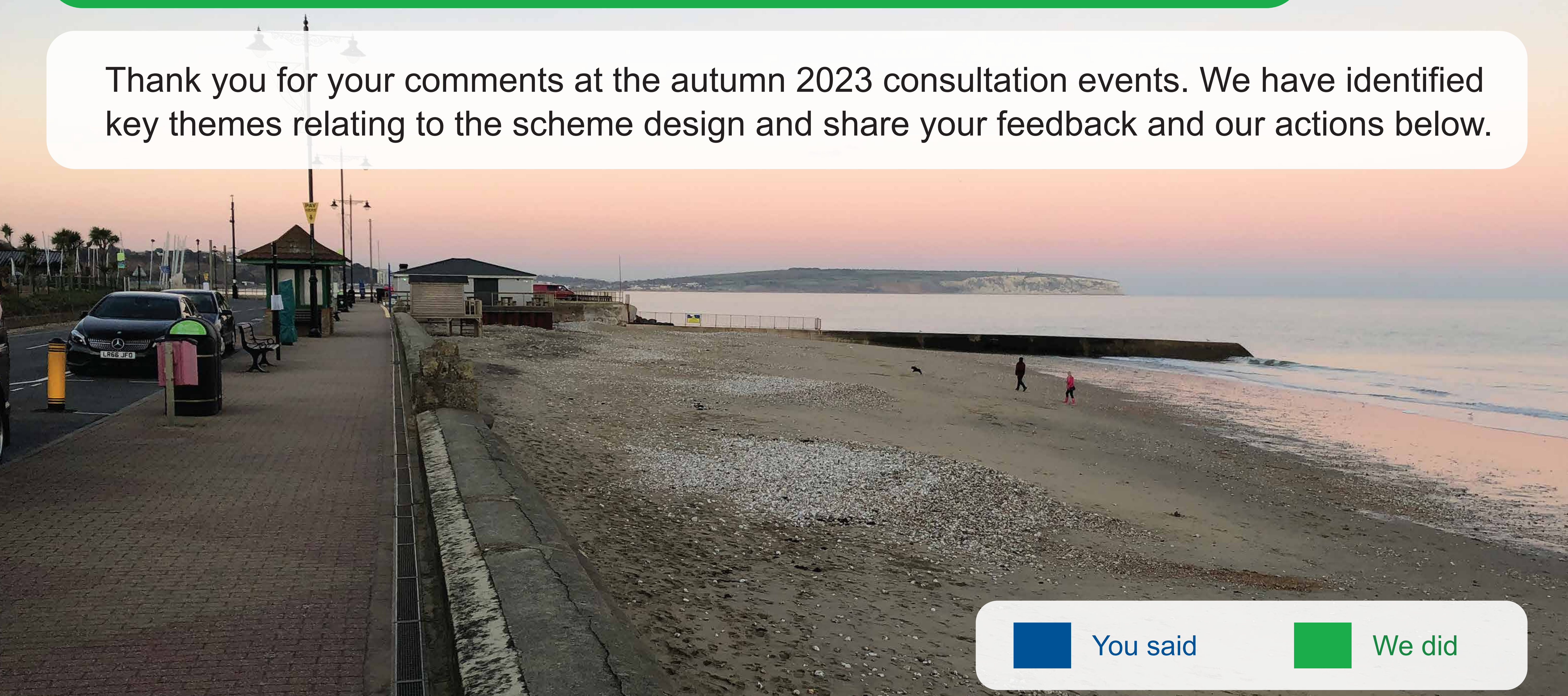
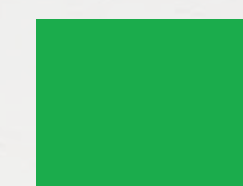


# What improvements would you like to see?

Thank you for your comments at the autumn 2023 consultation events. We have identified key themes relating to the scheme design and share your feedback and our actions below.



You said



We did

## Construction

- Completing project in stages would disadvantage the tourist economy
- We will aim to complete the project in one stage of construction work

## Pedestrian railings

- There is a large drop from the top of the seawall to the beach
- Design includes pedestrian railings along length of scheme

## Aesthetics

- Design must complement the beach and seafront
- We are working with the Council to ensure the design is in keeping with Shanklin Conservation Area requirements

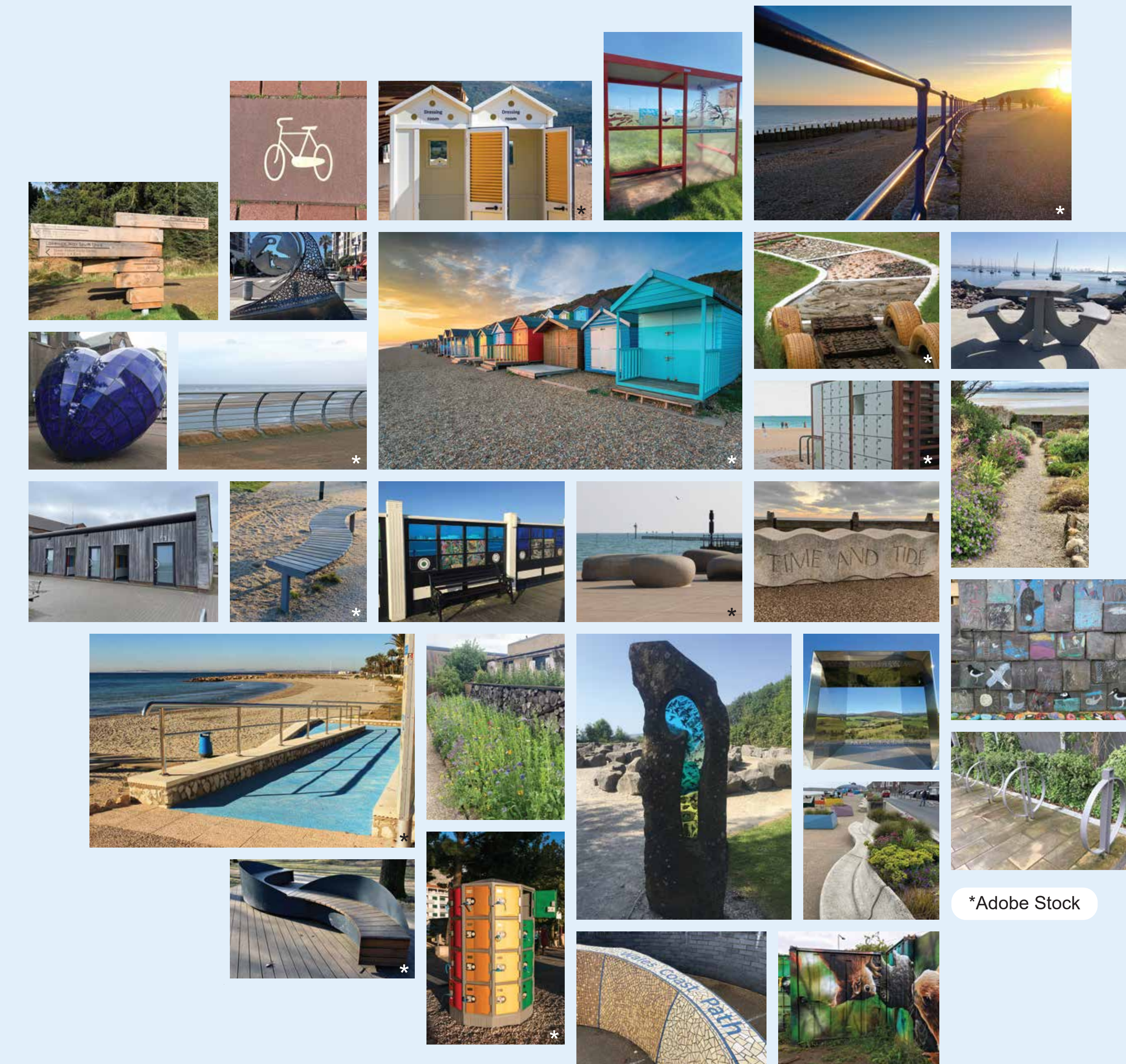
## Access

- Incorporate accessibility into the works
- Seeking independent advice to improve disabled access to the beach where feasible

## Biodiversity

- Incorporate environmental enhancements to increase local biodiversity
- Identifying environmental, habitat and landscaping enhancement opportunities

We have been collecting ideas for landscape improvements. What do you think?



Please share your ideas using the contact details below.



**ISLE OF WIGHT**  
COASTAL DEFENCE SCHEMES



Scan the QR code to give us your feedback.

