



Welcome to the second edition of the Shanklin Coastal Defence Scheme Newsletter.

DECEMBER 2022 – ISSUE #2

BEACH TO THE FUTURE COMPETITION – DRAW YOUR FAVOURITE BEACH 50 YEARS FROM NOW....



Thank you to anyone who dropped by to talk to our team at **Hullabaloo in October**. We had a great time chatting to you all about our schemes and demonstrating how the JBA Trust interactive wave machine worked with different types of flood defences. Congratulations to all the children who entered our 'Beach to the Future' competition. We were so impressed with all the fantastic drawings, but the winner was **Zara (age 10)** who has won a year's membership to Dinosaur Isle. Thank you to Dinosaur Isle for supporting our competition to inspire the next generation of coastal experts!

We have also been sharing our work with A Level students from the Island VI form, who are studying coastal management. It was great to be able to bring the real world into the classroom and discuss career paths.

PUBLIC REALM - QUESTIONNAIRE RESULTS...

HOW DO PEOPLE USE THE PUBLIC FRONTAGE AT SHANKLIN

Thank you to everyone who completed our Public Realm Questionnaire this summer. We had a total of **44** responses and some valuable comments and suggestions which we will use to help develop the scheme. We have published a summary report on our website (see final page) if you would like to find out more about the responses received.

100% of respondents agreed that there is a need to act now to reduce flood and erosion risks in Shanklin, and the vast majority said that they were concerned by flood and/or erosion risks. The images below show how people indicated the various ways they use the coastal frontage at Shanklin.



Beach huts



Water sports



Cycling



Dog walking



Family Amusements



Leisure activities



Swimming



Enjoy Victorian heritage



Natural open spaces



Access the shore



Social eating / drinking



Walking / running



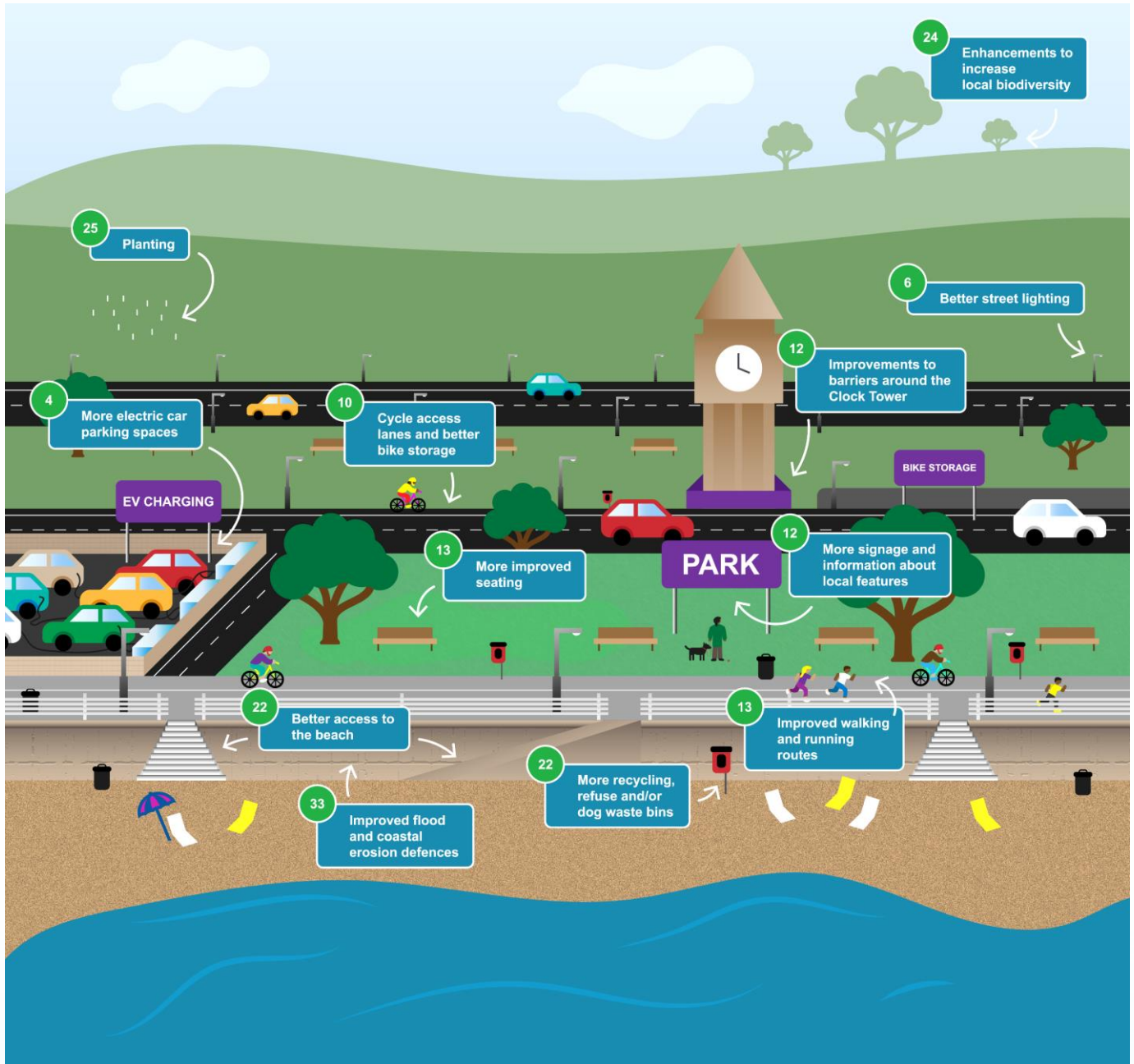
Enjoy the sea views



Enjoy wildlife

WHAT PUBLIC REALM IMPROVEMENTS DO PEOPLE MOST WANT TO SEE AROUND THE SEAFRONT AT SHANKLIN

The image below shows which public realm improvements people said they would most like to see along the seafront at Shanklin. **The numbers indicate the number of times each option was selected.** We will be reviewing these as we develop our plans and exploring partnership funding opportunities that could help us to deliver improvements as part of the scheme.



If you missed the opportunity to provide your comments, we will be carrying out further engagement in the **spring/summer 2023**.



GROUND INVESTIGATION

You may have seen our contractors out on site over the last 6 months collecting data. **The ground level and Ground Penetrating Radar (GPR) surveys are now complete.** Thank you for your patience.

In January 2023, we will begin Ground Investigation surveys in various locations along the Esplanade, and on the beach next to the sea wall and groynes. These can be seen below...



This work will involve us looking beneath the ground surface to obtain vital information about ground conditions and below ground structures, including the foundations of the existing sea defences. We have used the findings of our GPR survey to focus our investigations and keep disruption to a minimum. However, this work will appear more intrusive, **ranging from hand dug excavation pits to the use of drilling machinery for taking borehole samples.** This is essential to enable us to assess the possible options for sea wall and groyne refurbishment, and to minimise the risk of below ground hazards causing delays later in the project.

Work is programmed to start during the week commencing **9th January 2023** and is expected to take 5 weeks to complete. Each exploratory location will be closed off to the public for a few days at a time, and **work will take place between 8am and 5pm.** No road closures are anticipated, but footpath diversions and some temporary parking bay suspensions will be in place for safety. Storage and welfare facilities will be located in a section of the Spa car park for the duration of the 5 week period.

We apologise for any inconvenience that may be caused by the investigations. A full set of Frequently Asked Questions will be available on our website, but if you have any further queries or concerns, please contact us.

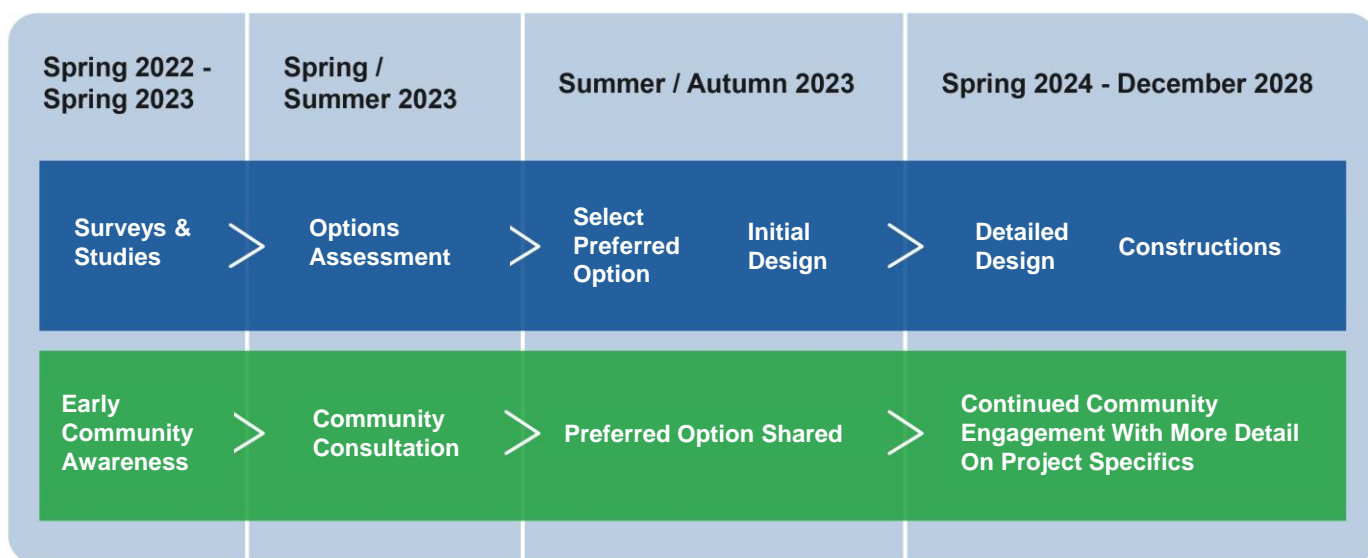


NEXT STEPS....

Once we have completed our ground investigations and other technical assessments, we will use this information to confirm a list of feasible options to be considered in more detail. **We will need your views on these options and will use your feedback to help us refine the list down to a single preferred option.** We are therefore hoping to gather as many views as possible during the consultation period, which will take place late May to the end July 2023. Further details on how you can view and comment upon the options will be provided in our next newsletter and via our mailing list. If you would like to be added please contact IOW_FDschemas@environment-agency.gov.uk. We are planning to share the preferred option, along with an initial high-level design, in early Autumn 2023.

Timescales

■ Shanklin Project Phase ■ Engagement



FOR MORE INFORMATION...



WEB: <https://consult.environment-agency.gov.uk/solent-and-south-downs/shanklin-coastal-defence-scheme-informati/>



EMAIL: IOW_FDschemas@Environment-Agency.gov.uk



POST: Environment Agency, Chichester Office, Oving Road, PO20 2AG



PHONE: 03708 506 506

