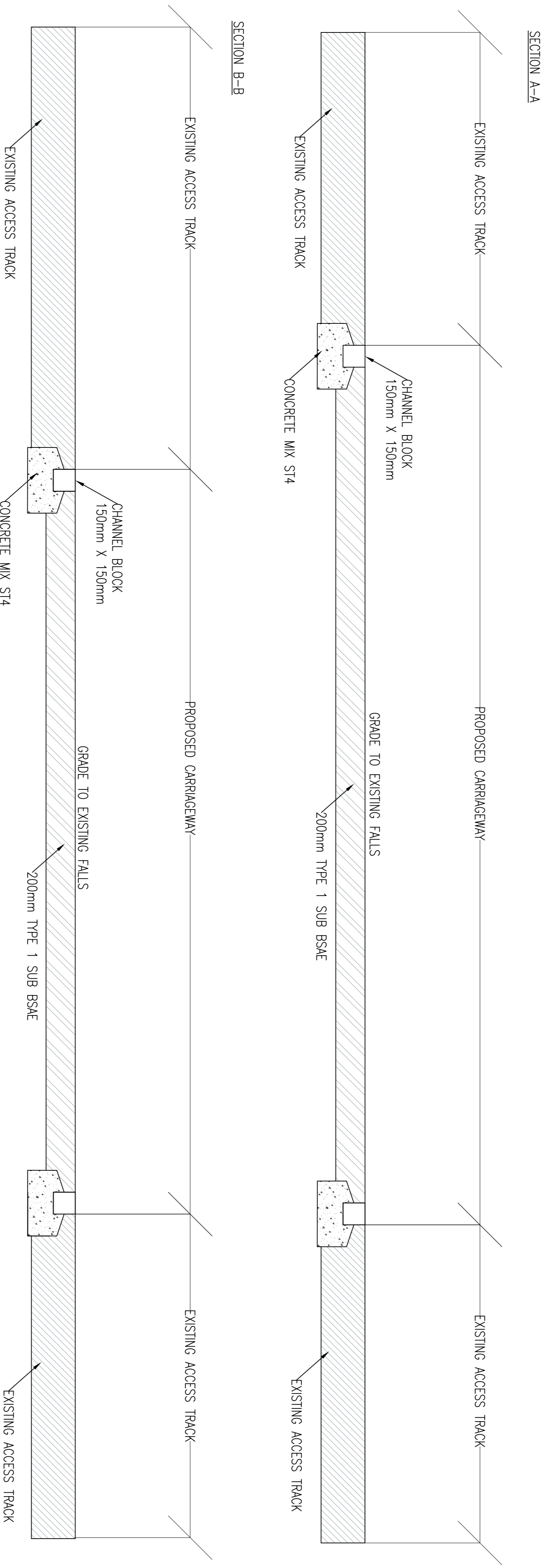
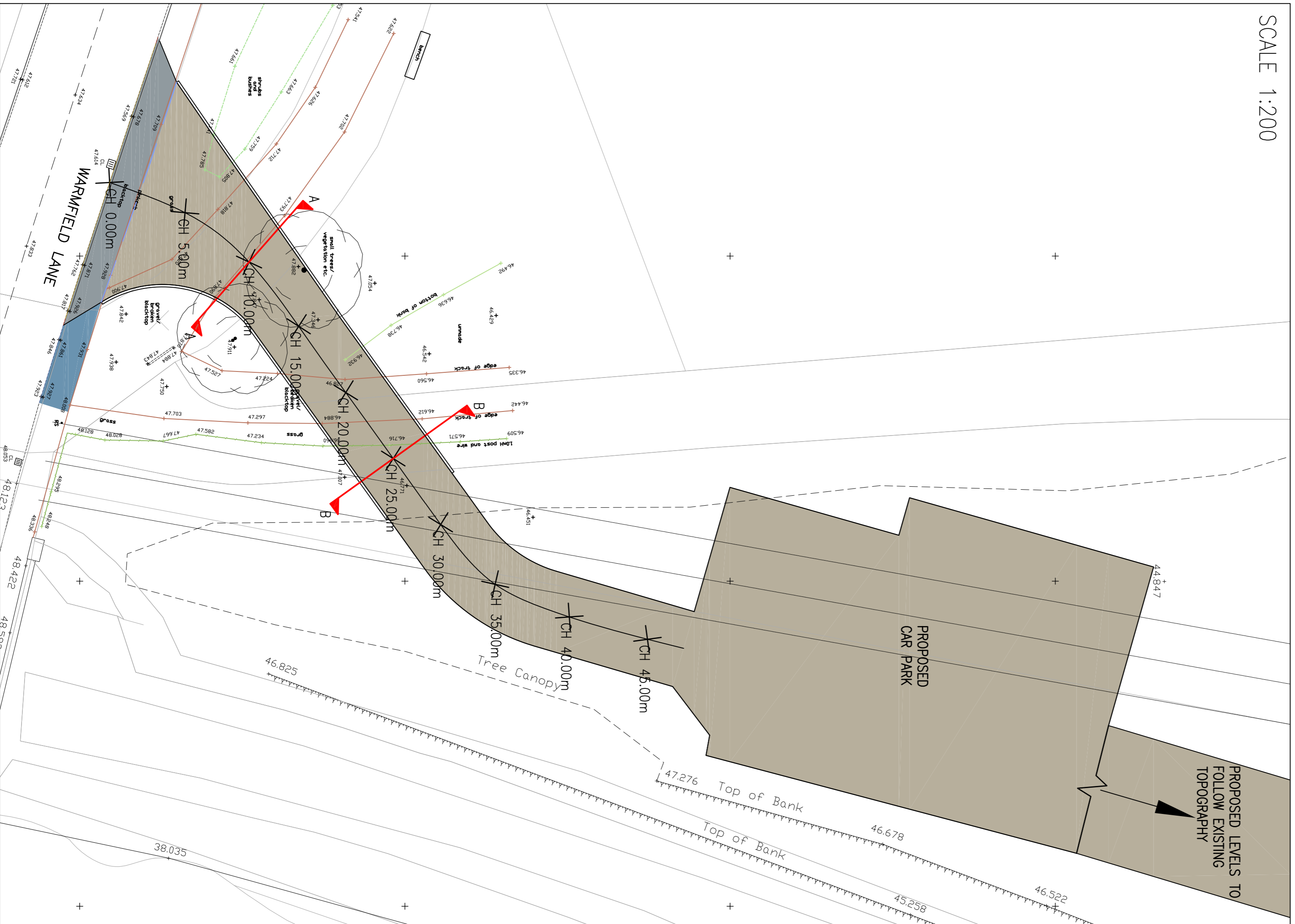


SCALE 1:200



KEY	
	DROPPED CROSSING CONSTRUCTION
	SURFACE COURSE 25mm THICK 0/6mm DBM 190 PEN SURFACE COURSE L/STONE TO BS 4987-1:CLAUSE 7.5
	BINDER COURSE 55mm THICK 0/20mm DBM 190 PEN BINDER COURSE L/STONE TO BS 4987-1: CLAUSE 6.5
	SUB-BASE 150mm THICK TYPE 1 TO COMPLY WITH SPECIFICATION FOR HIGHWAY WORKS CLAUSE 803. MUST BE FREE FROM EXTRANEOUS MATTER. WEEDS MUST BE REMOVED AND THE SUBGRADE SPRAYED WITH A GLYPHOSATE TYPE WEEDKILLER.
	1000 GRADE GEOTEXTILE TERRAM REQUIRED ON NEW CARRIAGEWAY AND FOOTWAY FORMATION AREAS
	FOOTWAY CONSTRUCTION
	SURFACE COURSE 30mm THICK SMA10 OR 40mm THICK 30% HRA ON 60mm THICK AC20 DENSE BINDER
	ACCESS TRACK CONSTRUCTION
	200mm TYPE 1 SUB-BASE
	K4 KERB
	K7/K8 TRANSITION KERB
	K1 KERB

THIS DRAWING SHOWS THE PRELIMINARY DESIGN ONLY AND IS SUBJECT TO DETAILED DESIGN, TOPOGRAPHICAL SURVEY INFORMATION AND LOCAL AUTHORITY APPROVAL

REV	AMENDMENTS	DATE

HY CONSULTING Ltd
 OFFICE 24, EVANS BUSINESS CENTRE
 BURLEY ROAD LEEDS LS4 2PU
 Tel: 0115 2883034 email: info@hyconsulting.com

PROPOSED FISHING PONDS
 WARMFIELD LANE, KIRKTHORPE
 DETAILED DESIGN

SCALE: AS SHOWN @A1
 DATE: DEC 2015

DRAWING No: 1513701