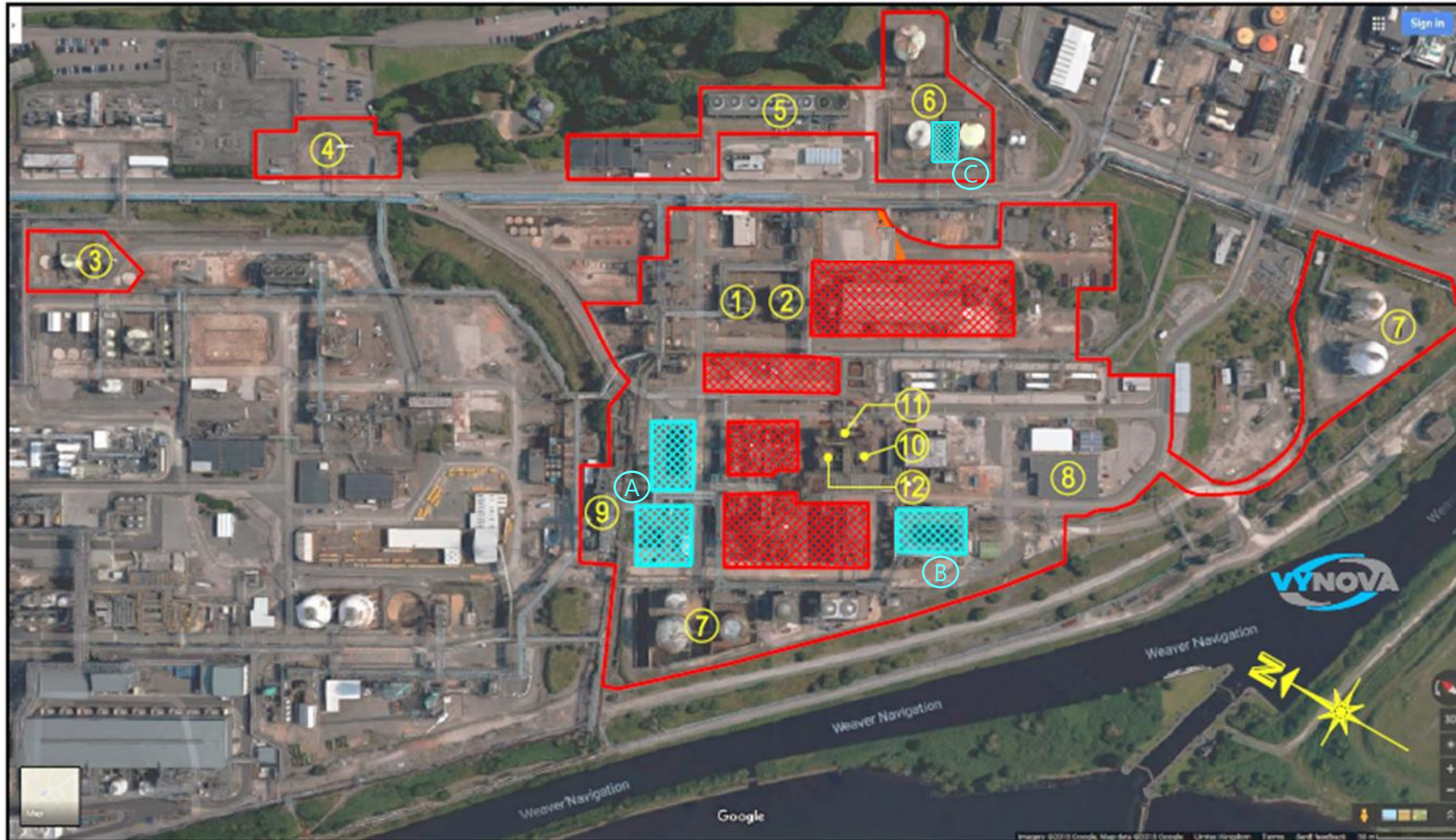


Plan of Vynova Site



Project Summer - Overview



- VYNOVA BOUNDARY
- ▨ INOVYN PLANT WITHIN VYNOVA BOUNDARY
- ▨ NEW PLANT

Key

- 1. EDC 1 - Close
- 2. EDC 2 - Close
- 3. VDC 4 loading - Close
- 4. 6th Ave loading - Upgrade
- 5. No 5 Cooling Tower – Close
- 6. EDC Tank farm – Close (except T302 to firewater duty)
- 7. DC3 Tank Farm – Upgrade
- 8. DC3 Control – New DCS/SIS
- 9. Incineration – Refurbish
- 10. DC Reactors – Close
- 11. EDC Wash – Close
- 12. EDC Distillation – Refurbish

- A. New HPE Reactors, Wash, Vent scrubbers, Fridge, etc.
- B. New Effluent Treatment plant
- C. New Firewater Deluge Pumps