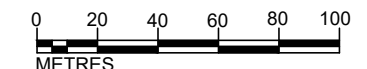


- A5 - Boiler 1
- A6 - Boiler 2
- A7 - Boiler 3
- A8 - Boiler 4
- A11a - CHP Engine 5 (via multiflue to 26m stack)
- A11b - CHP Engine 6 (via multiflue to 26m stack)
- A11c - CHP Engine 7 (via multiflue to 26m stack)
- A11e - Siloxane and VOC Removal (to 26m stack)
- A14 - Flare Stack
- A15a,b-A21a,b - 7 x MTU Diesel Engines (Standby Emergency Generators)
- A22 - 4 x Standby Diesel Storm Pumps
- A23 - Pumphouse Standby Generator
- A24 - Deluge Standby Generator
- A25 - Flare Stack to Replace A14
- A26 - Biogas Upgrading Unit Exhaust
- A27 - Reject Biomethane Waste Gas Burner
- A28 - GEU Process Vents
- A29 - Carbon Filters PRVs
- A30 - Pasteurisation Process PRV
- A31-A46 - Primary Digester Tank PRVs
- A47 - OCU 12
- A48 - Transfer PS OCU
- A49 - GBT Building OCU
- A50 - Sludge Thickening Plant OCU

- T1 - Primary Sludge Thickening Liquors, OCU Waste Water, Boiler Waste Water, Biogas Condensate, Surface Water Run Off
- T2 - SAS Thickening Liquors, OCU Waste Water, Surface Water Run Off
- T3 - Head of Works Imports 1
- T4 - Head of Works Imports 2
- T5 - Offsite Dewatering Plant

- S1 - Primary Sludge Thickening Liquors, OCU Waste Water, Boiler Waste Water, Biogas Condensate, Surface Water Run Off
- S2 - SAS Thickening Liquors, OCU Waste Water, Surface Water Run Off
- S3 - Head of Works Import
- S4 - Head of Works Import



Rev	Rev. Date	Purpose of revision	Drawn	Checked	Rev'd	Apprv'd
P0	DEC 2024	FOR INFORMATION	AR	MM	JK	MM
P05	DEC 2023	FOR INFORMATION	AR	MM	JK	MM
P04	NOV 2023	FOR INFORMATION	AR	MM	JK	MM
P03	OCT 2023	FOR INFORMATION	AR	MM	JK	MM
P02	OCT 2023	FOR INFORMATION	LC	MM	JK	MM



Client: **STC IED PERMIT MOGDEN STW**

Drawing title: **FIGURE 2 INSTALLATION BOUNDARY AND AIR EMISSION POINTS**

Drawing status: **PERMITTING**

Scale: **AS SHOWN DO NOT SCALE**

Jacobs No. **B22849AZ** Rev **P06**

Drawing number: **B22849AZ-JAC-MGN-DR-0002**

© Copyright 2021 Jacobs U.K. Limited. The concepts and information contained in this document are the property of Jacobs. Use or copying of this document in whole or in part without the written permission of Jacobs constitutes an infringement of copyright. Limitation: This drawing has been prepared on behalf of, and for the exclusive use of Jacobs' Client, and is subject to, and issued in accordance with, the provisions of the contract between Jacobs and the Client. Jacobs accepts no liability or responsibility whatsoever for or in respect of any use of, or reliance upon, this drawing by any third party.

- KEY:**
- Installation Boundary
 - Tanks Excluded from Permit Scope
 - Area Covered by Urban Waste Water Treatment Regulations
 - Subsurface Gravity Pipeline
 - Presumed Route of Subsurface Biogas Pipeline
 - Presumed Route of Subsurface Sludge Line
 - Air Emission Point
 - Liquor Transfer Point
 - Return Liquor Sampling Point

I:\Environ\Design\PROJECTS\KUIB22849AZ\JAC-MGN-DR-0002-P06.dwg - 13/12/2024 16:24:42 - A33_Vert - AL.Roberts

This product includes mapping data licensed from Ordnance Survey ©. © Crown copyright and/or database right 2024. Licence number 0100031673