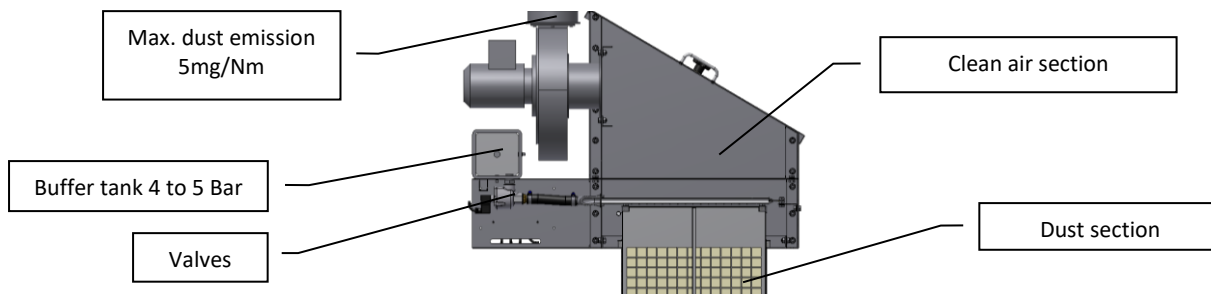


## General info filters (for complete info; read the manual)



### Name structure various filters

<b>PCS39/30</b> P = Poeth C = Cyclone <i>B = Blower</i> <i>O = On top</i> S = Tubes 39 = Number of tubes 30 = Length of tubes(3m)	<b>CAF415</b> AAF A=4 Filter bags BAF B=6 Filter bags CAF C=10 Filter bags 4 = Number of rows 15 = Area of filter bag in 1 row (m <sup>2</sup> ) F = Fan E = Without Fan	<b>KMH4/15</b> K = Compact M = bags H = Horizontal <i>V = Vertical</i> 4 = Number of filter bags 15 = Length of filter bags (1,5m)	<b>CAC2-315</b> C = Clean A = Air C = Casted 2 = Number of Units 3 = Number of layers 15 = Area of filter bag in 1 row (m <sup>2</sup> )
--	--	--	--

### Piping and air velocity

Most dust is carried away starting at 14m/s

Dust air pipe -> 20 to 25 m/s

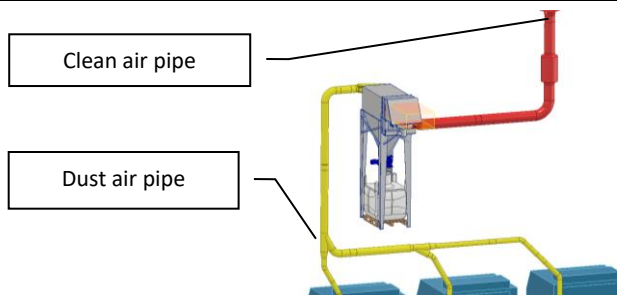
Clean air pipe -> 10 to 14 m/s

Clean air pipe/discharge pipe

Bigger diameters because:

Lower resistance

(No dust so air velocity is allowed to be lower)



### Delta-P

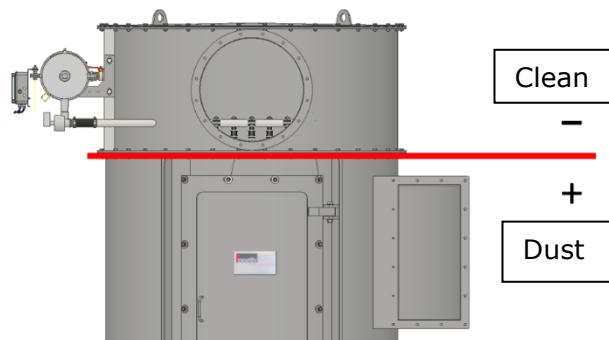
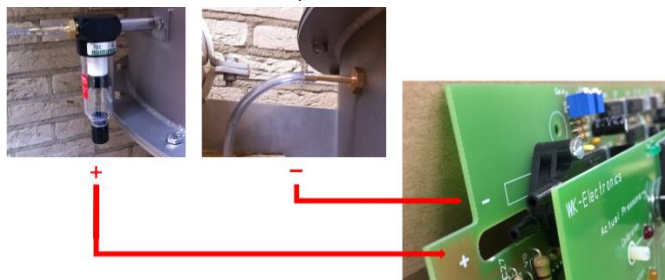
Pressure difference over dust- and clean air sections

Expressed in Pascal of mBar **100 pascal = 1 mBar**

Minimum 0/1 mbar

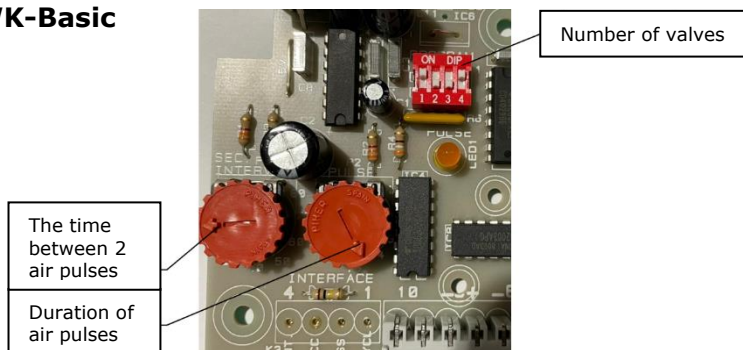
Cleaning 5 mbar

Maximum 10/12 mbar

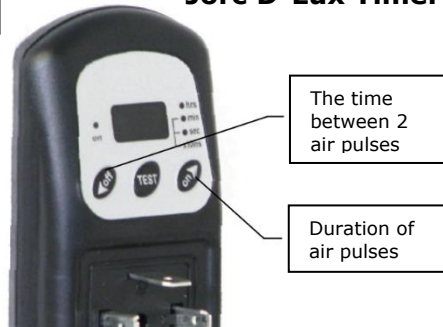


### Controllers

#### WK-Basic



#### Jorc D-Lux Timer



**WK-Economic**

**Inspection**

What to look for during inspection?

- Delta-P -> *Pressure difference over dust- and clean air sections*
- Contamination of the filter bags -> *Visual check / Previous replacing date*
- Does the controller work correctly -> *Controls the valves / Correct Delta-P value*
- Do the valves work -> *Do the Valves sound the same? No weird noises / pressure loss at buffer tank / membranes functional? Control valves functional (Pins covered by coil)?*
- pressure loss at buffer tank -> *2 to 3 Bar*
- Air pressure buffer tank -> *4 to 5 Bar*
- Air velocity piping -> *minimum 14 m/s, preferably 20 m/s*
- Blocked piping -> *low to no air velocity. Knock on pipe, dull sound*
- Pollution of Delta-P filter -> *Emptying and cleaning Delta-P filter*

When the fan is not powered, the valves on the WK-Economic can be tested using the overrule switch.

With many valves, the interval time can be lowered. This reduces the time you have to wait until all valves have been tested. **DON'T FORGET TO SET BACK THE INTERVAL TIME.**

Tip; to clean the filter bags properly and make them last longer: Filter cleaning on + fan powered off for a half hour

